



Ikäystävälliset kaupungin konferenssi Kööpenhaminassa 2.-3.11.2023

Nostoja esityksistä

Vanhusneuvosto 15.11.2023





City of Turku

Two examples as promoters of the health and well-being of the elderly:

+75 strength and balance training and the virtual concerts of the city orchestra

Age-friendly cities in the Nordic region, Copenhagen 2023

Anna-Mari Sopenlehto- Jokinen

The Boldest city in Finland

Over 200 000
inhabitants
and 40 000
elderly
people

We are
here!



First in Finland

Turku is the oldest city in Finland and one of the oldest in the North.

The first written document where Turku is mentioned is from 1229.

The fortress of Turku Castle has stood at the edge of the River Aura since the 1280's.

Today Turku is the cultural and economic centre of its region.



+75 strength and balance training

- These groups intended for people over 75, physical activity and wellbeing is improved with strength and balance training in the gym.
- As the muscle strength improves, the ability to function improves, making everyday chores and outdoor activities easier.
- During the group, a suitable further training place is searched for each participant, so they can maintain training after the group.
- Groups are free of charge and meet twice a week, for eight weeks. The instructor is a physiotherapist or another professional in the field of physical wellbeing.



Benefits of +75 strength and balance training

SPPB test (short physical performance battery)

- 71% of participants improve their total score on the SPPB test. (N=195)
- In particular, the muscle strength of the lower limbs improves: 96% improve the time getting up standing from sitting down.
- The risk of impaired mobility decreases: the number of those in "highest risk" clearly decreased and the number of those in "no-risk" score range increased. (N= 195)
- 85% feel that their physical condition has improved as a result of the training. (N=161)
- 77% feel that training has had an effect on coping/ ability to function in everyday life. (N=155)



Virtual concerts of the city orchestra

- The jointly experienced events of Turku Philharmonic Orchestra's Virtual Concert Tour project create a sense of community, prevent loneliness and increase everyday functionality among customers.
- The tour visits assisted living units, housing service units and associations' premises.
- The length of the concerts and the program can be easily customized according to the audience.
- The team includes a producer/presenter, a technician and a musician.
- [Mittbibliotek](#) – all concerts and lots of more





Thank You!

Contact information

**Anna-Mari Sopenlehto-Jokinen
Specialist**

City of Turku, Central Administration

anna-mari.sopenlehto-jokinen@turku.fi, [LinkedIn](#)

**Nostoja ikäystävällisistä
ratkaisuista
kaupunkisuunnittelussa
ja palveluissa**





“as we age, our place in society both materially and metaphorically, changes. The material spaces and places in which we live, work and engage in leisure activities are age-graded and, in turn, age is associated with particular places and spaces” thus “the urban built environment is simultaneously a cause and an effect of ageist attitudes” (Geographer Glenda Laws, 1993)

**Simultaneous development within the public space itself
 marginalization of common places in favor of places targeted at certain (age) groups**

**Places for the elderly / “elderly-friendly”
 Stigmatization and forced identification**

Sustainable city – open to the world

Gothenburg is Sweden's second largest city with nearly 600,000 inhabitants.

The city has a strategic location between Oslo and Copenhagen and is the heart and growth engine of the Gothenburg region and the entire Västra Götaland region.

The city has a strong business community and Scandinavia's largest port.

A journey that began in 2016 -Chance to build for the future



With an age-friendly perspective in urban planning, more people can live independently longer and be active in society



Goal/aim

"The City of Gothenburg has inclusive and accessible environments that promote health, participation and safety for everyone, with quality of life throughout their lives"

Action Plan 2021-2024, decided by the City Council

Senior citizens participation throughout the process.

The administration för older people, nursing and care facilitate the work, which includes several departments and municipality companies



**Future developers co-create with the
City of Gothenburg
to make the city more age-friendly**

Digital inclusion

Är din smarta telefon dum?

Besök våra bibliotek och mötesplatser
för seniorer – så hjälper vi dig.



Vilse i www?

Besök våra bibliotek och mötesplatser
för seniorer – så hjälper vi dig.



Får du panik av teknik?

Besök våra bibliotek och mötesplatser
för seniorer – så hjälper vi dig.



Chatty benches for social inclusion



[Åldersvänliga Göteborg -
pratbänkar - chat benches - English](#)



"We need more places like this in the city where you can talk about important topics like mental health and well-being."

"It's good to be able to get information about the city's activities and meeting places. I had no idea about everything on offer."

"The urban space as a meeting place – be involved in developing Gothenburg's Chatty benches"



Listening bench

Liar's bench

Gossip bench

Game bench

Date bench

Coffee Bench

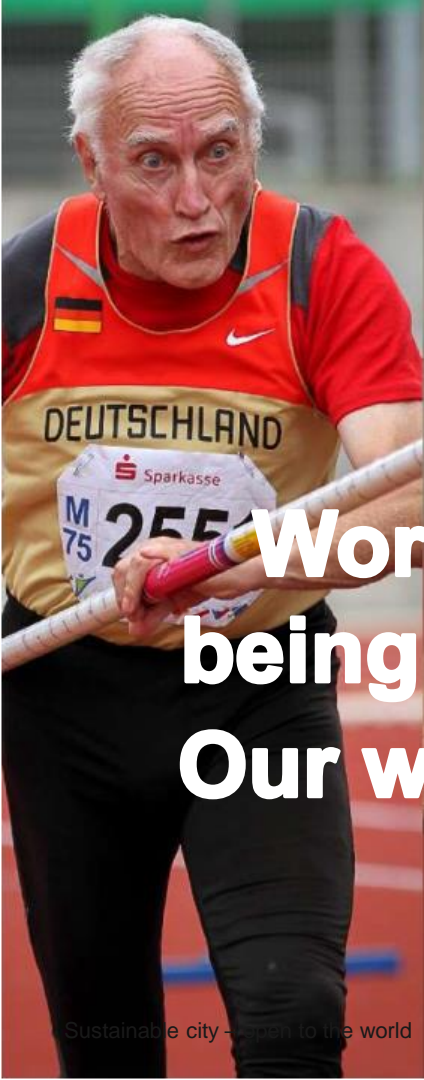
Joker's bench

Göteboss- bench

Substitutes bench

Interrupter bench





**World Veteran Championships
being held in Gothenburg in 2024
Our warmest Welcome to you all!**

Contact

Emma Matsson

Emma.Matsson@aldrevardomsorg.goteborg.se

Age-friendly Uppsala

Kenny Jansson

The strategic support unit/ Care and welfare department, Uppsala municipality

3 november 2023

Aktiverande styrdokument

Datum:
2020-03-11Diarienummer:
ALN-2018-0520
KSN-2019-2644Beslutsfattare:
Kommunstyrelsen
Dokumentansvarig:
Äldrenämnden

Program and action plan for an age-friendly municipality

- Uppsala joined the WHO network in 2016
- Program and action plan structuring the work for a more age-friendly municipality
- Based on the 2016-17 citizen dialogue / baseline assessment

Handlingsplan för
äldrevänlig kom

Översiktsplan

Mål och budget

Program

Verksamhetsplaner och aff

Handlingsplaner och öv

Översiktsplan

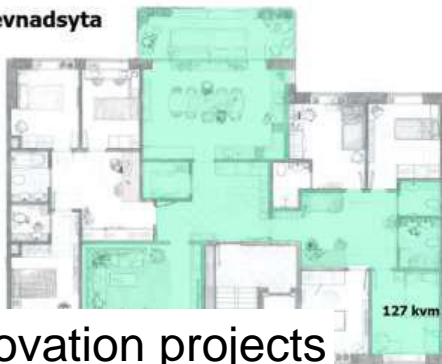


Physical environment



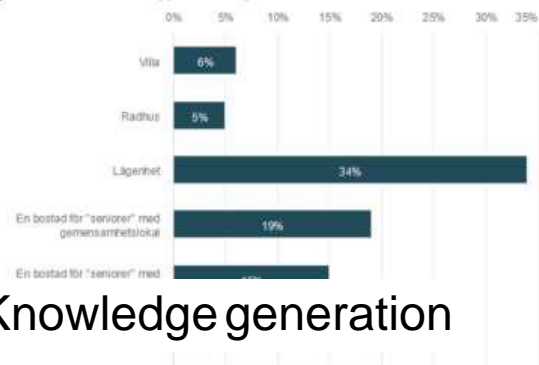
Age integration

Större levnadsyta



Innovation projects

Figur 8. Önskan om boendetyper vid nästa flytt



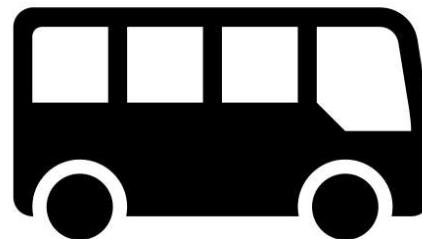
Knowledge generation



Seniorkortet

- Årsbiljett i kollektivtrafiken.
- Dygnet runt, alla dagar.
- 200kr/mån.
- Gäller dig 70+
- Säljstart ej beslutad.

Mobility



Social environment



Uppsala Summer Zone



Senior lunches in Schools



Cooperation on activities



The walker race

Generation Games Norway

Anne Berit Rafoss

Project manager

Centre for an age-friendly Norway



Generation Games

- Oslo – 2017
- 18 municipalities 2022
- 37 municipalities 2023
- Part of national reform «Community and independence – live safely at home»



Photo: Thomas Andrew Haugen Koonce

Photo: Thomas Andrew Haugen Koonce



