

TURKU



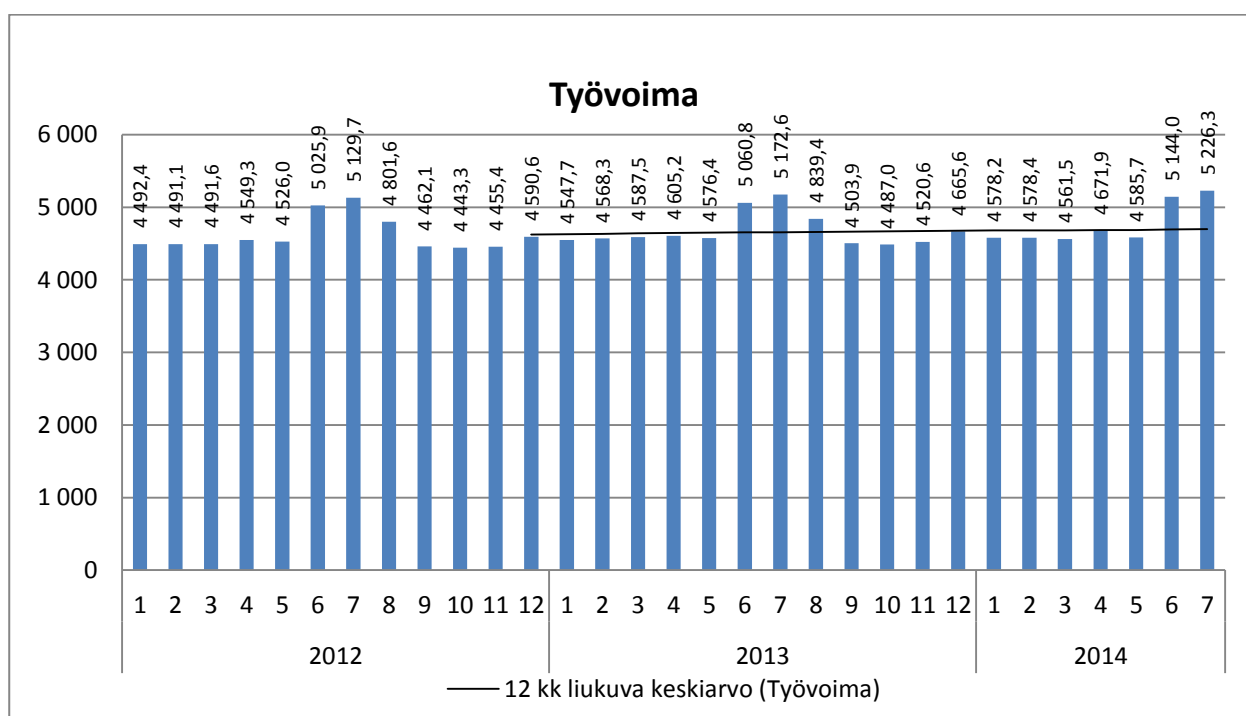
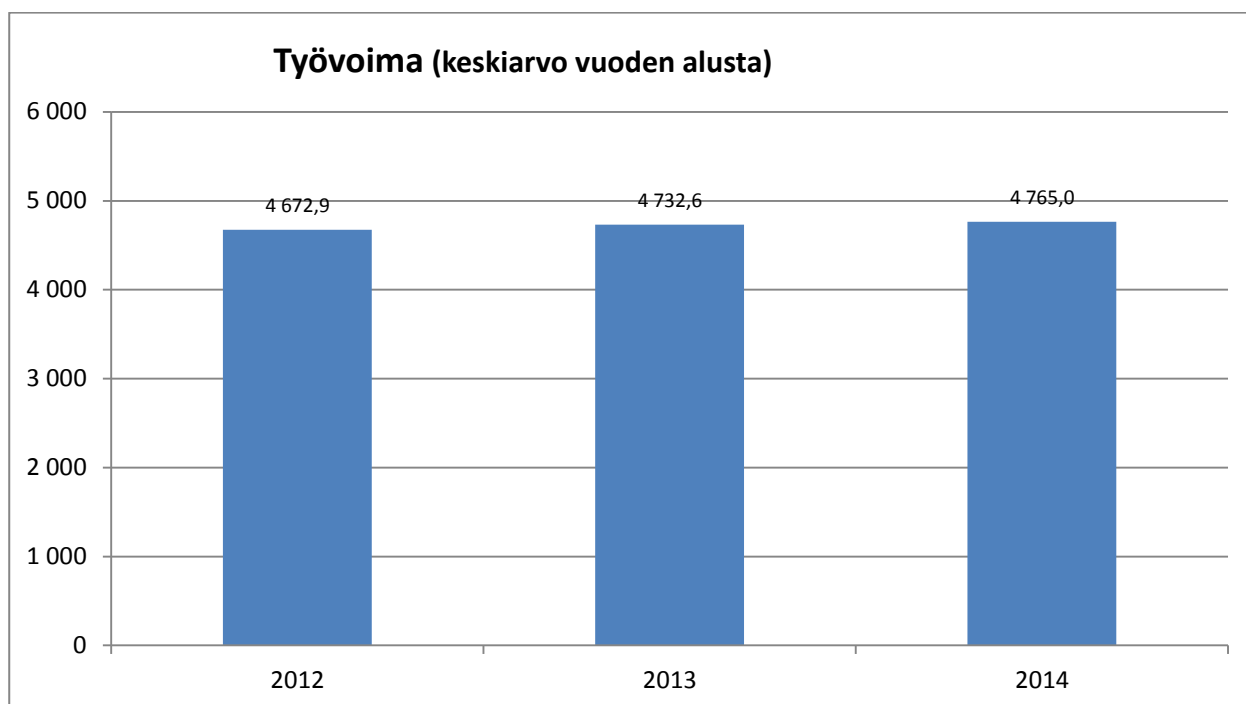
HYVINVOINTITOIMIALA

Kuukausiseuranta

Heinäkuu

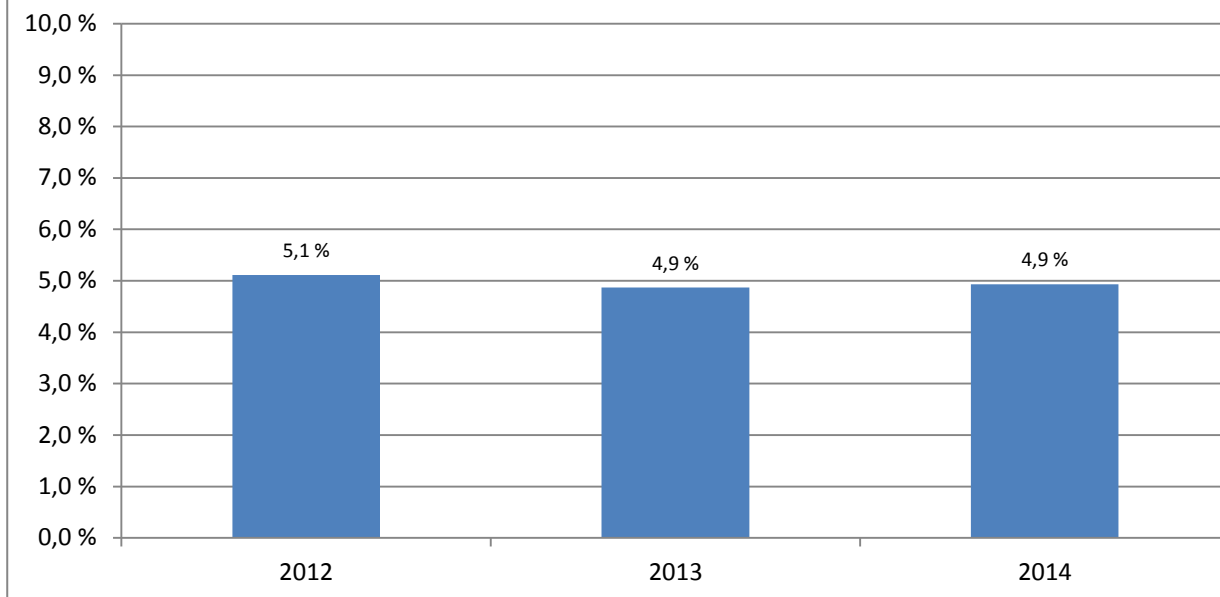
14.8.2014

HYVINVOINTITOIMIALA

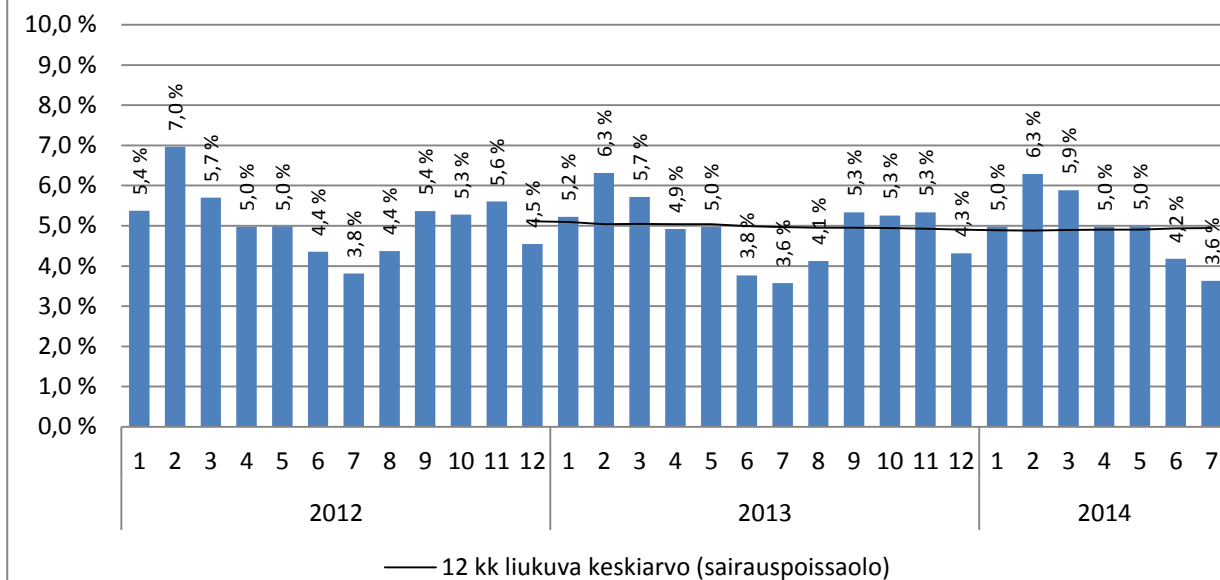


Huom! Vuoden 2012 organisaatiosta poistettu työterveyshuolto ja ympäristöterveydenhuolto. Keskiarvo vuoden alusta näyttää vertailun vastaavaan ajankohtaan muina vuosina. Henkilöstötiedot päivitetty 2.8.2014.

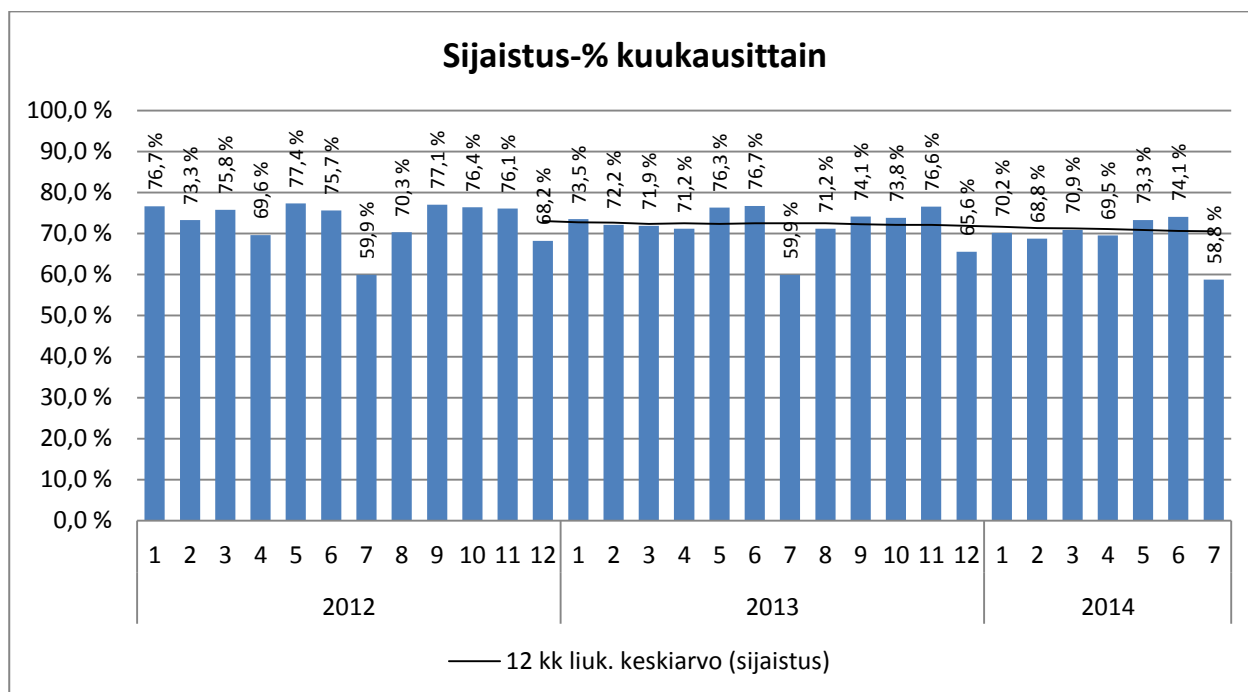
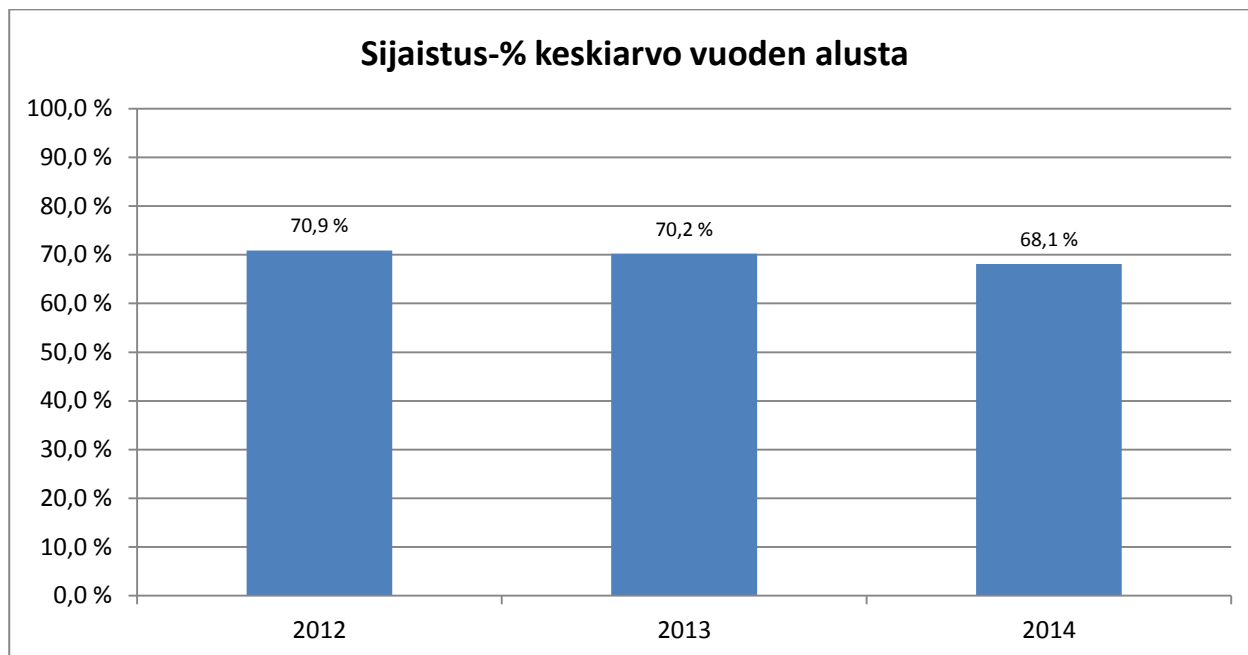
Sairauspoissaolo keskiarvo vuoden alusta



Sairauspoissaolo-%

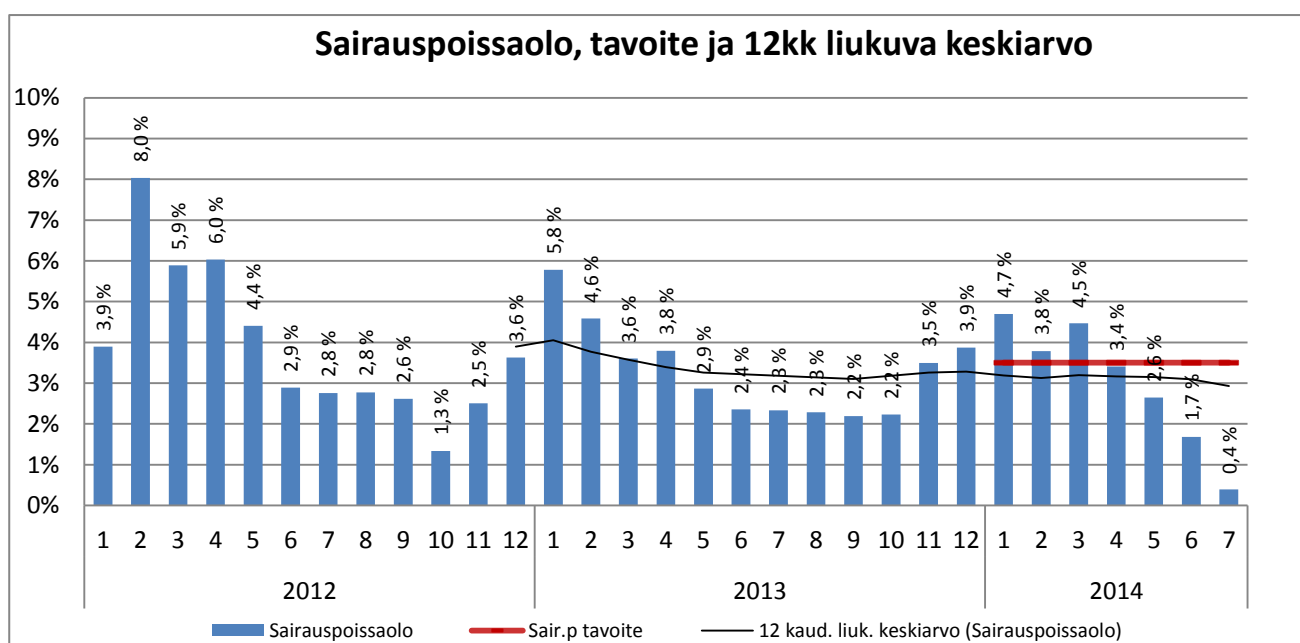
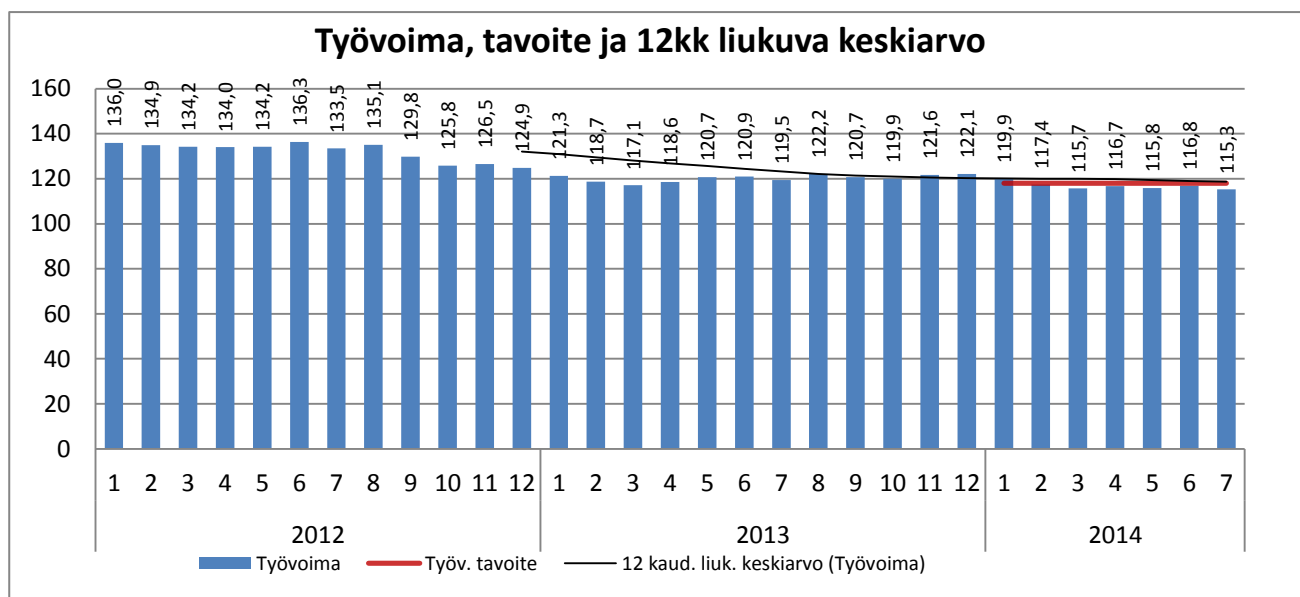


Huom! Vuoden 2012 organisaatiosta poistettu työterveyshuolto ja ympäristöterveydenhuolto. Keskiarvo vuoden alusta näyttää vertailun vastaavaan ajankohtaan muina vuosina. Henkilöstötiedot päivitetty 2.8.2014.



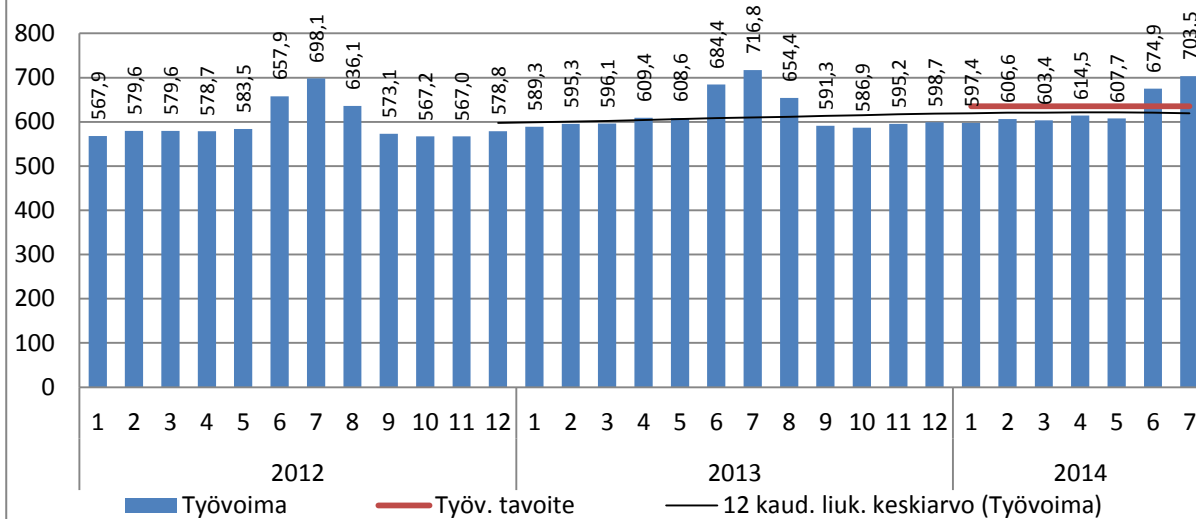
Huom! Vuoden 2012 organisaatiosta poistettu työterveyshuolto ja ympäristöterveydenhuolto. Keskiarvo vuoden alusta näyttää vertailun vastaavaan ajankohtaan muina vuosina. Henkilöstötiedot päivitetty 2.8.2014.

HALLINTO

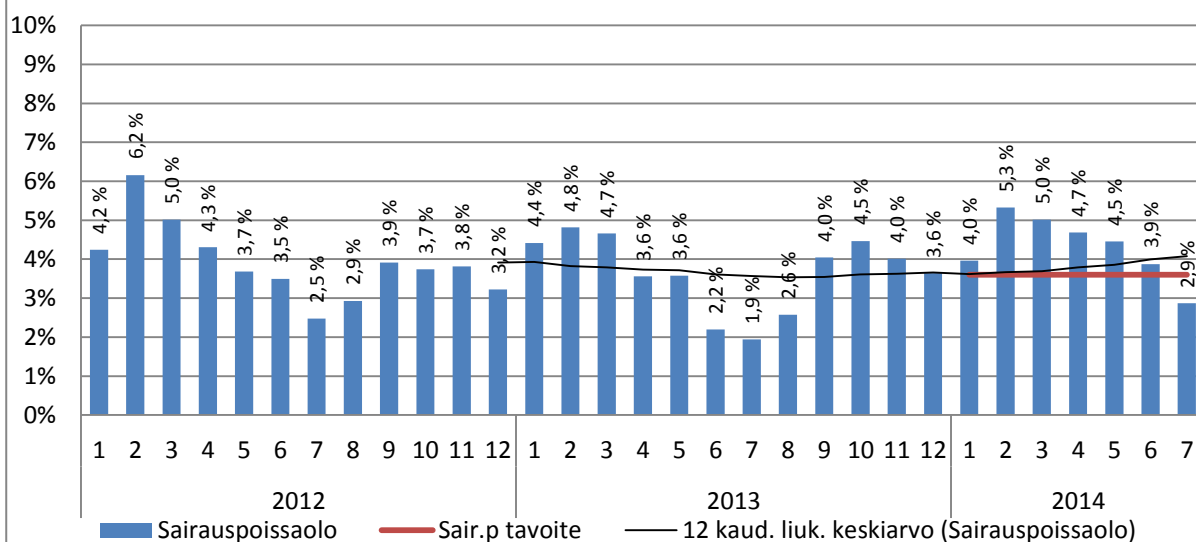


SOSIAALITYÖ

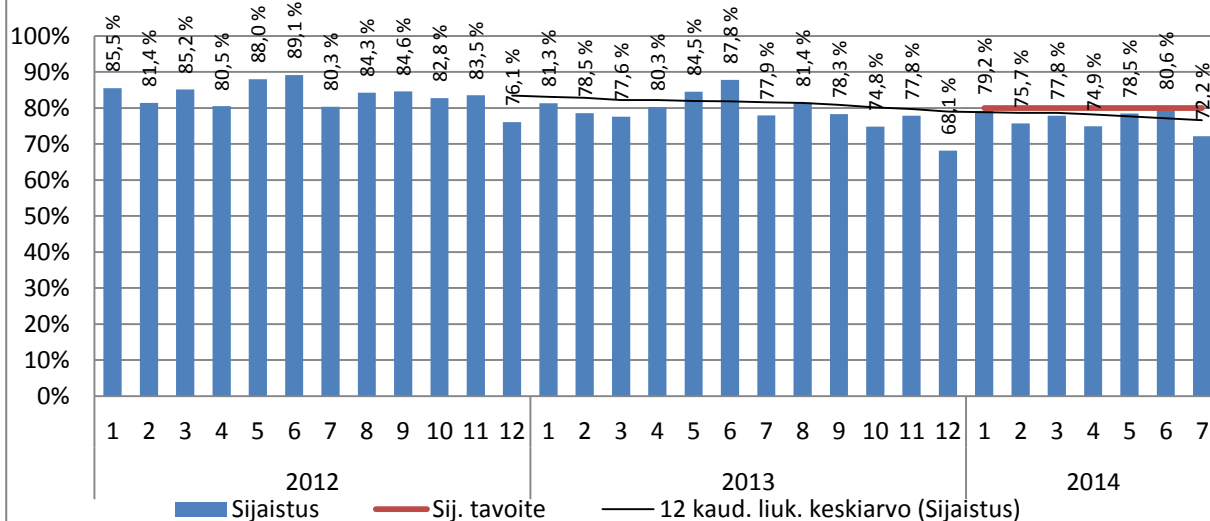
Työvoima, tavoite ja 12kk liukuva keskiarvo



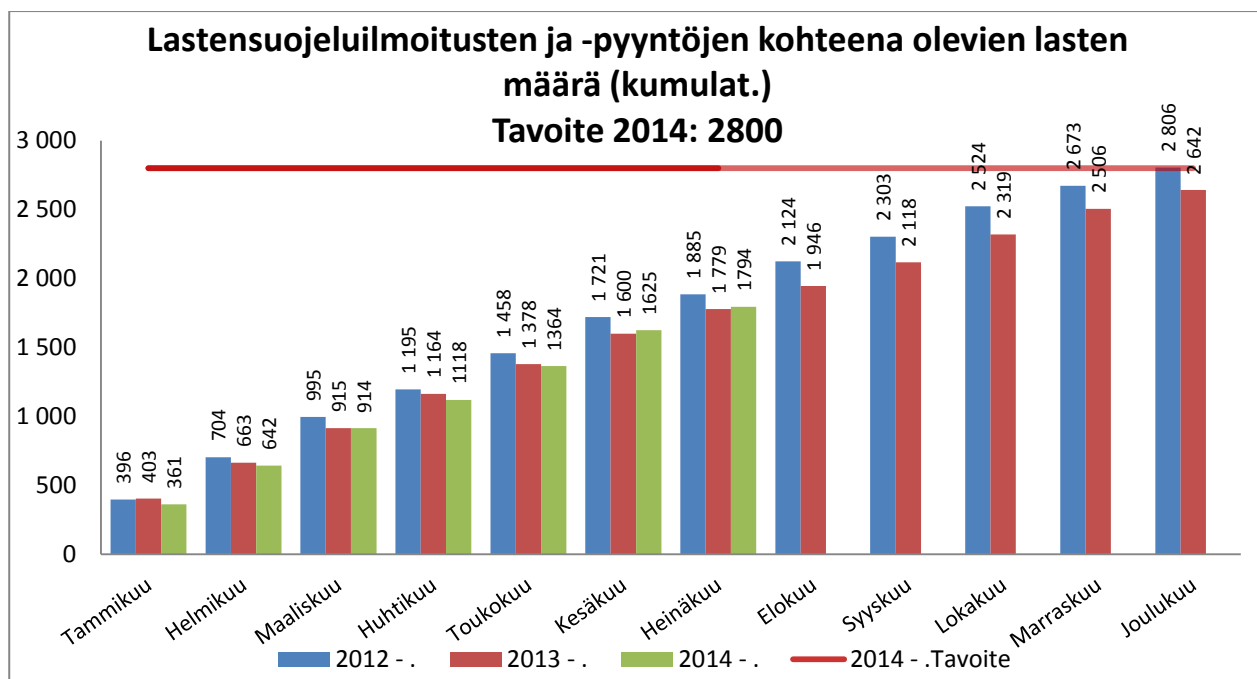
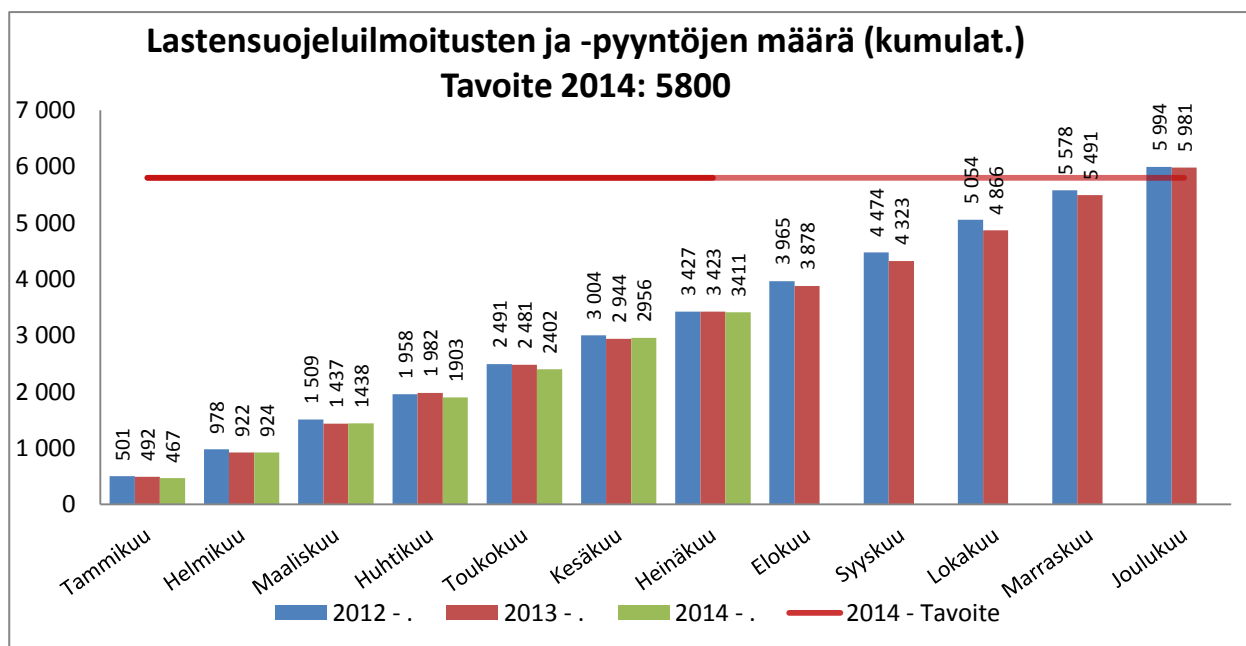
Sairauspoissaolo, tavoite ja 12kk liukuva keskiarvo

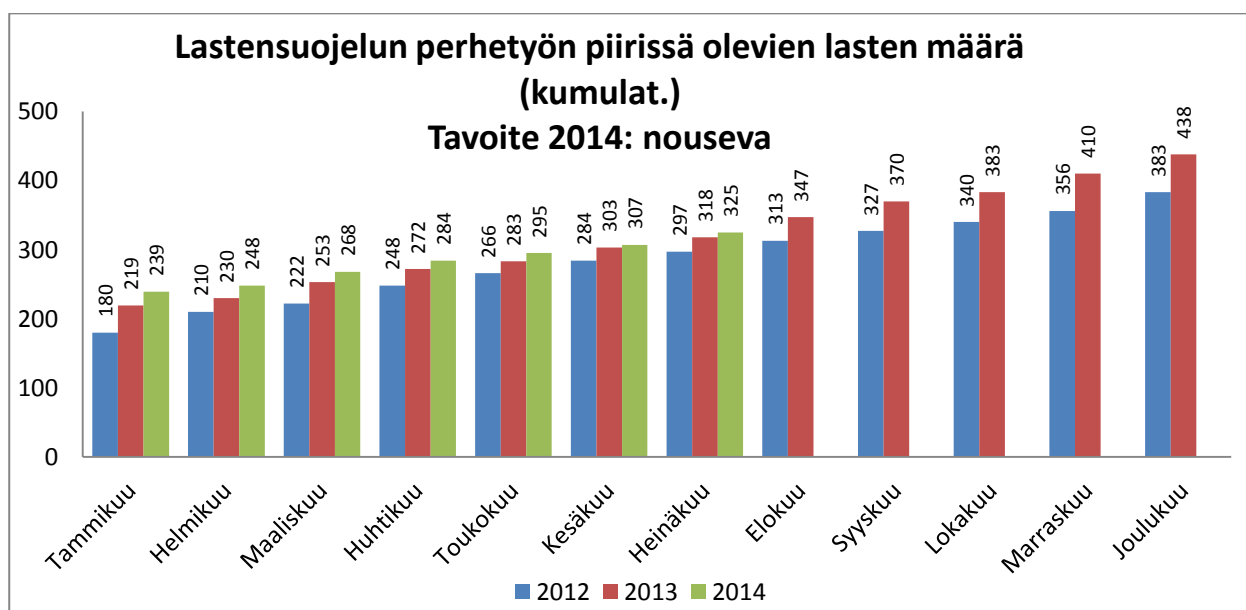
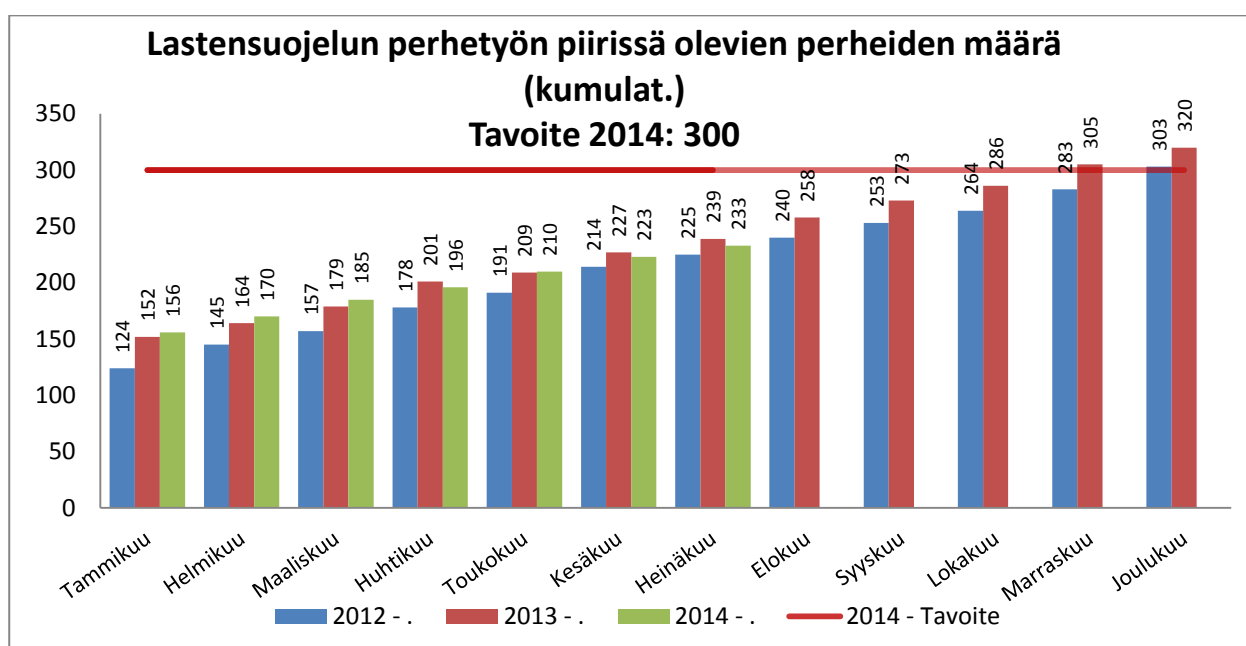
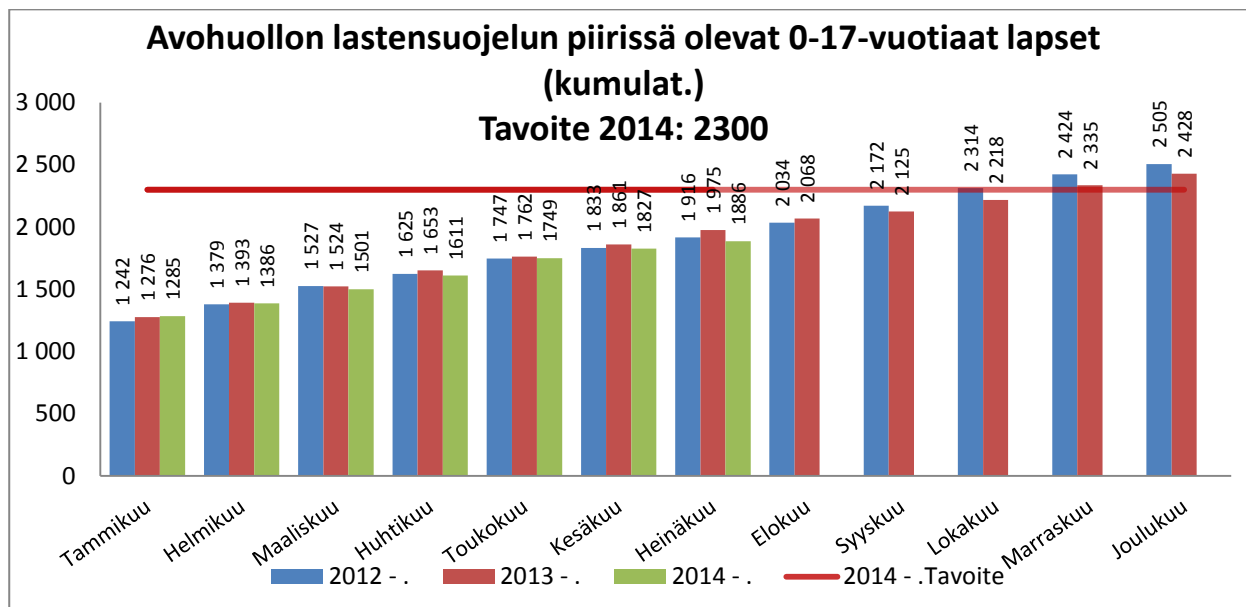


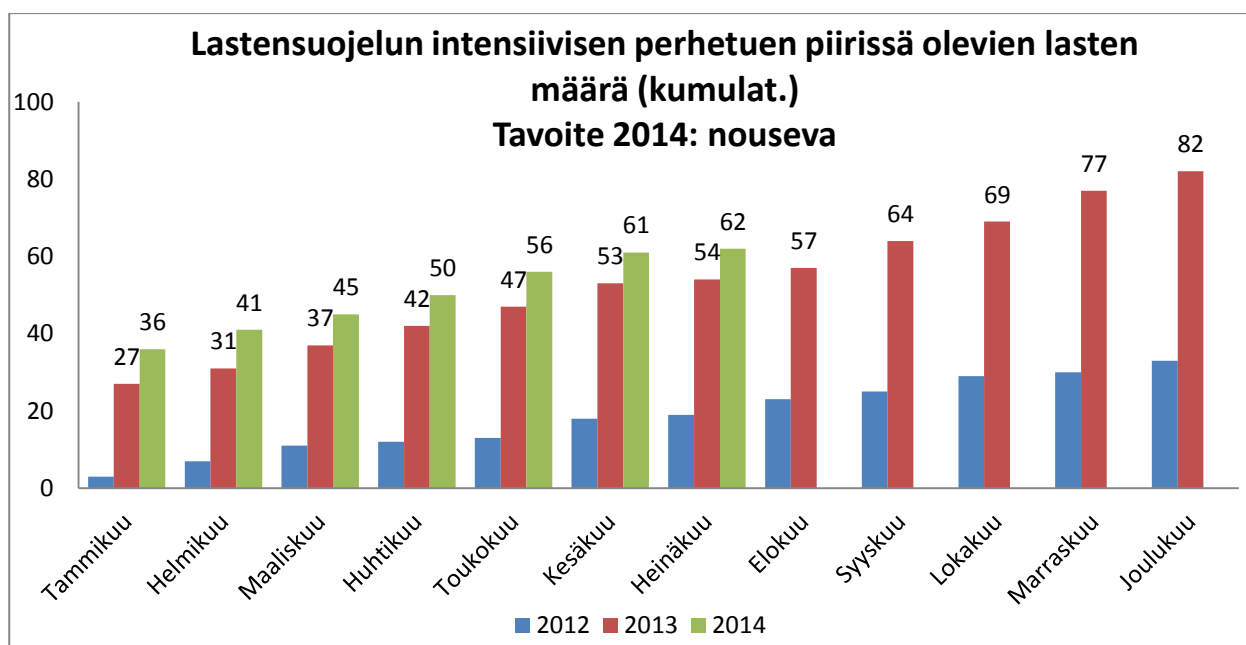
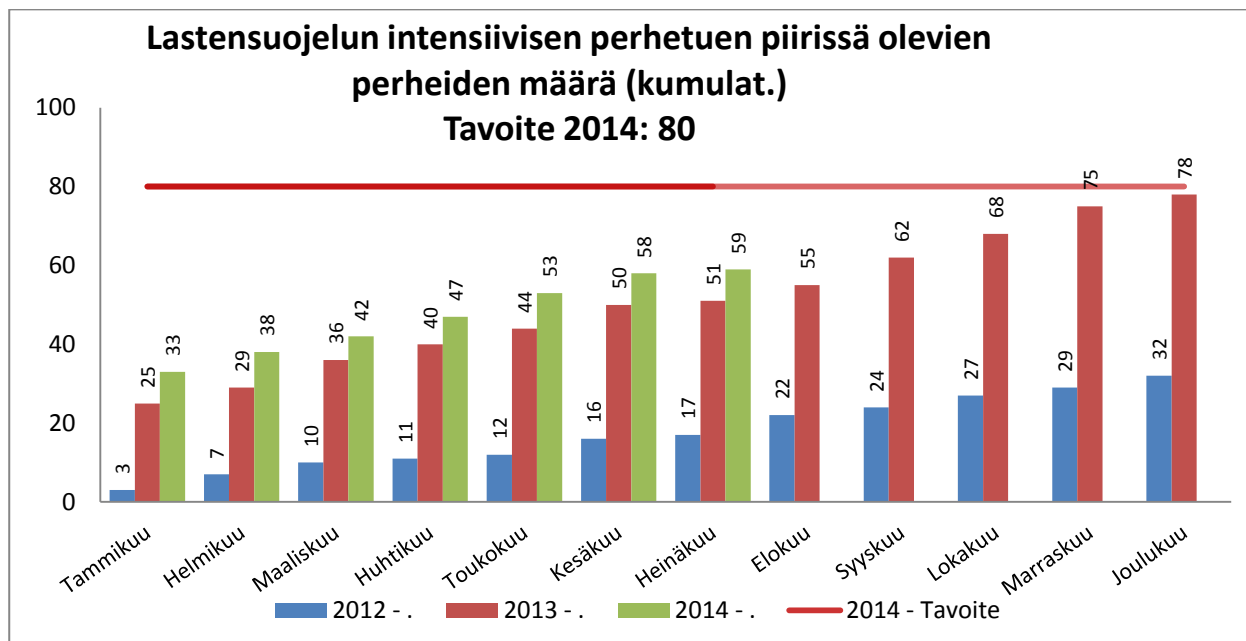
Sijaistus, tavoite ja 12kk liukuva keskiarvo



Avohuollon sosiaalityö

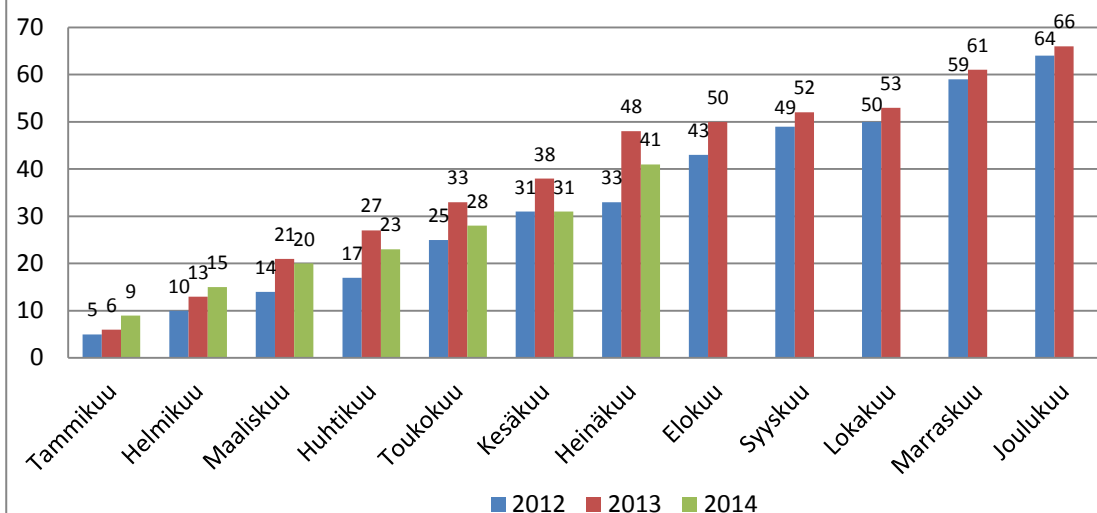




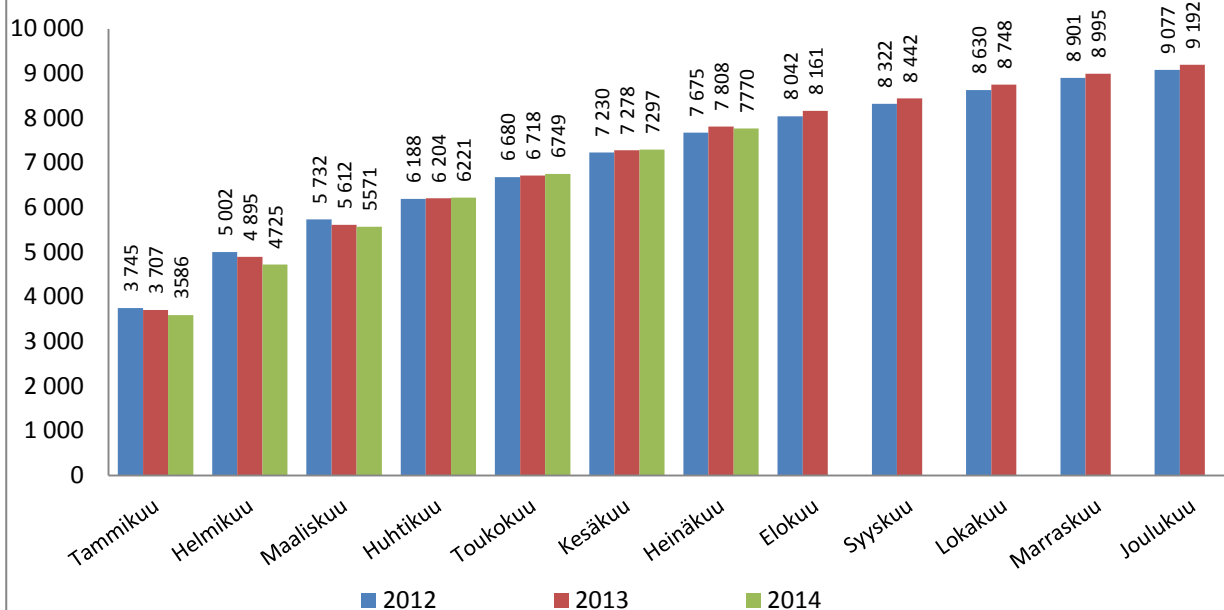


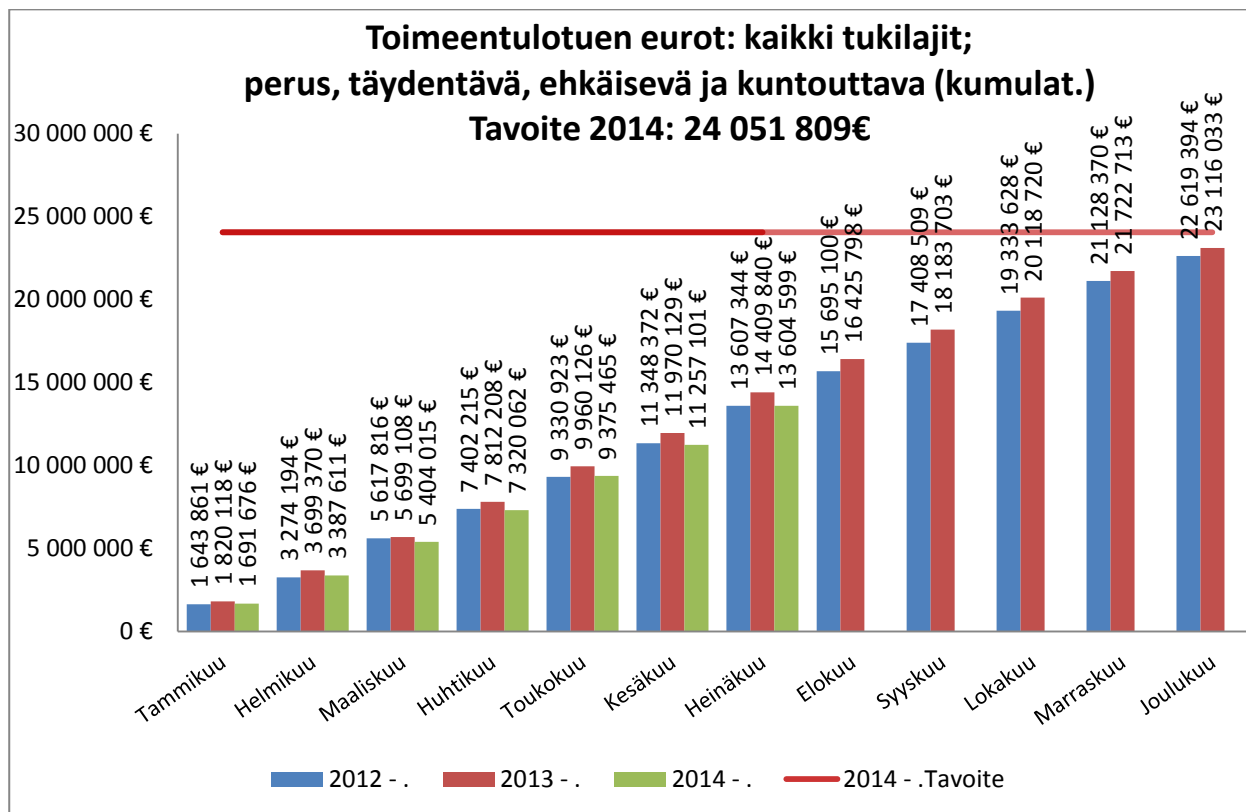
Uusien huostaanotettujen lasten määrä (kumulat.)

Tavoite 2014: laskeva

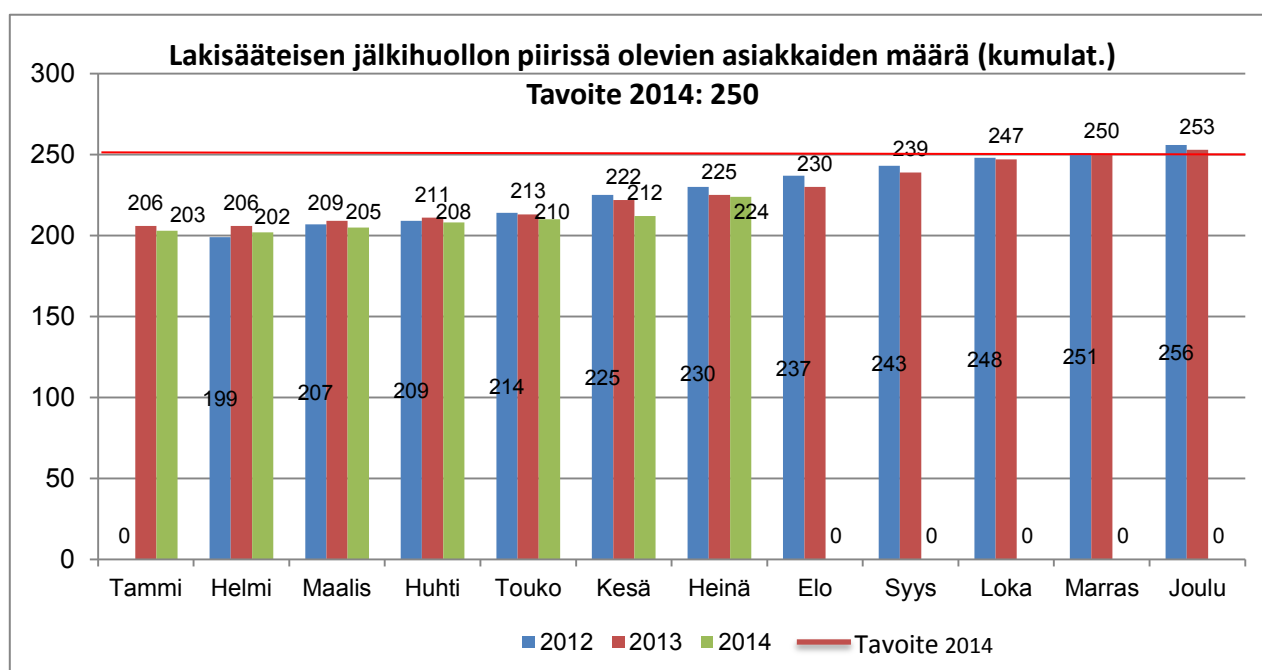
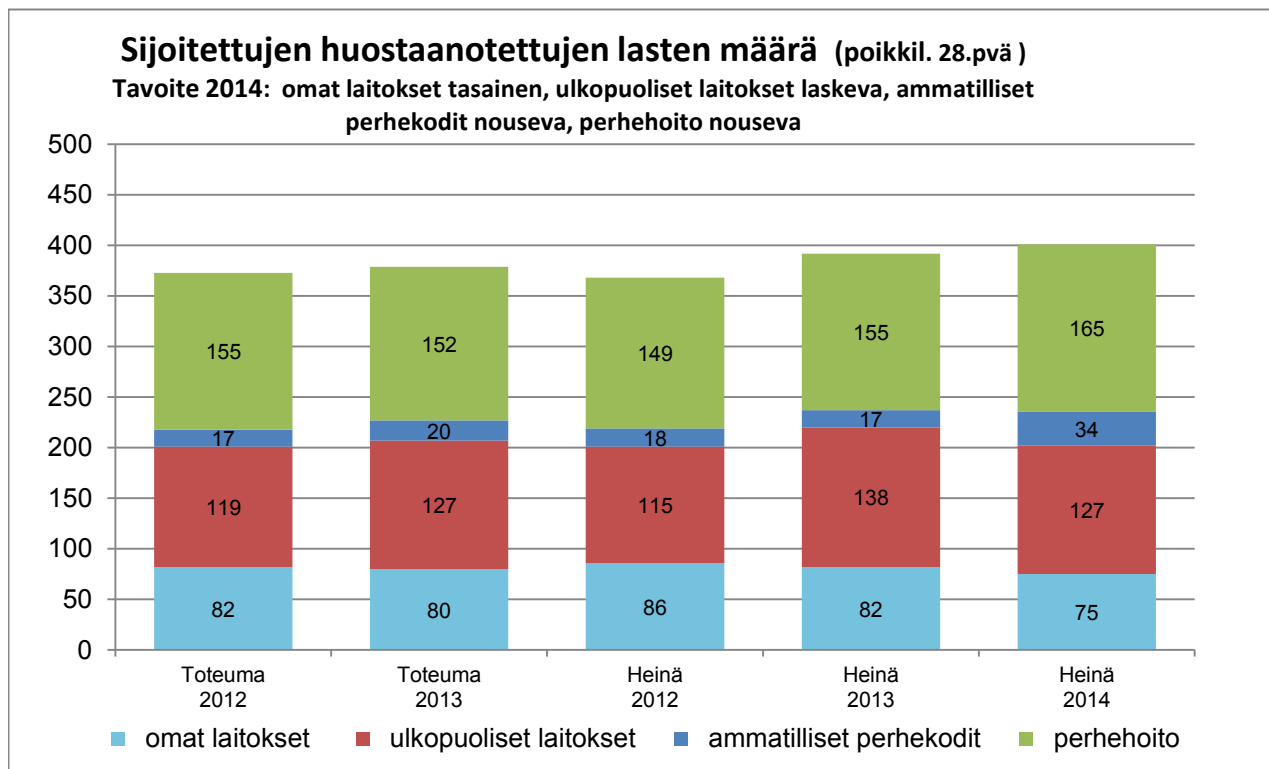


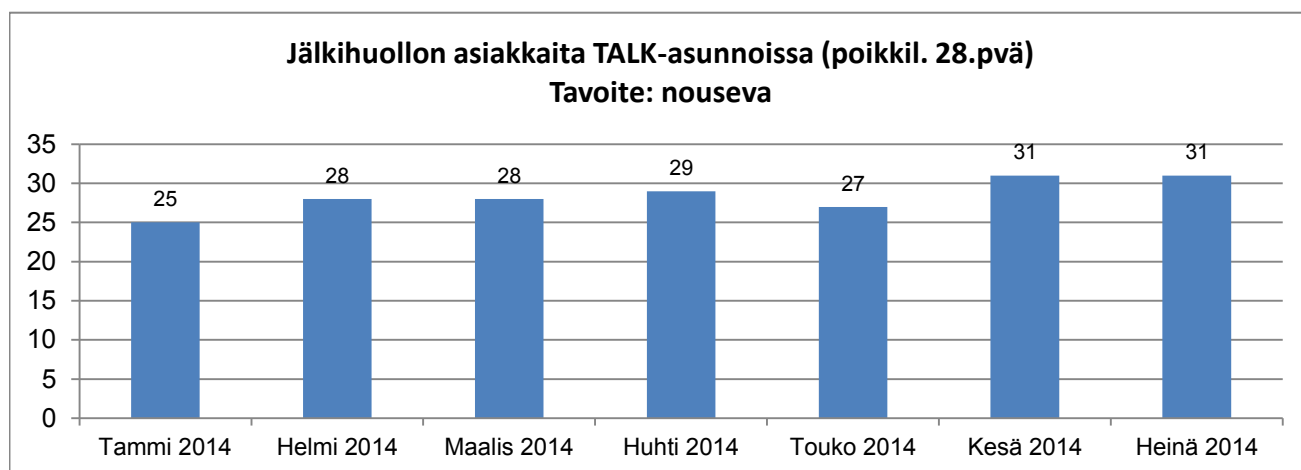
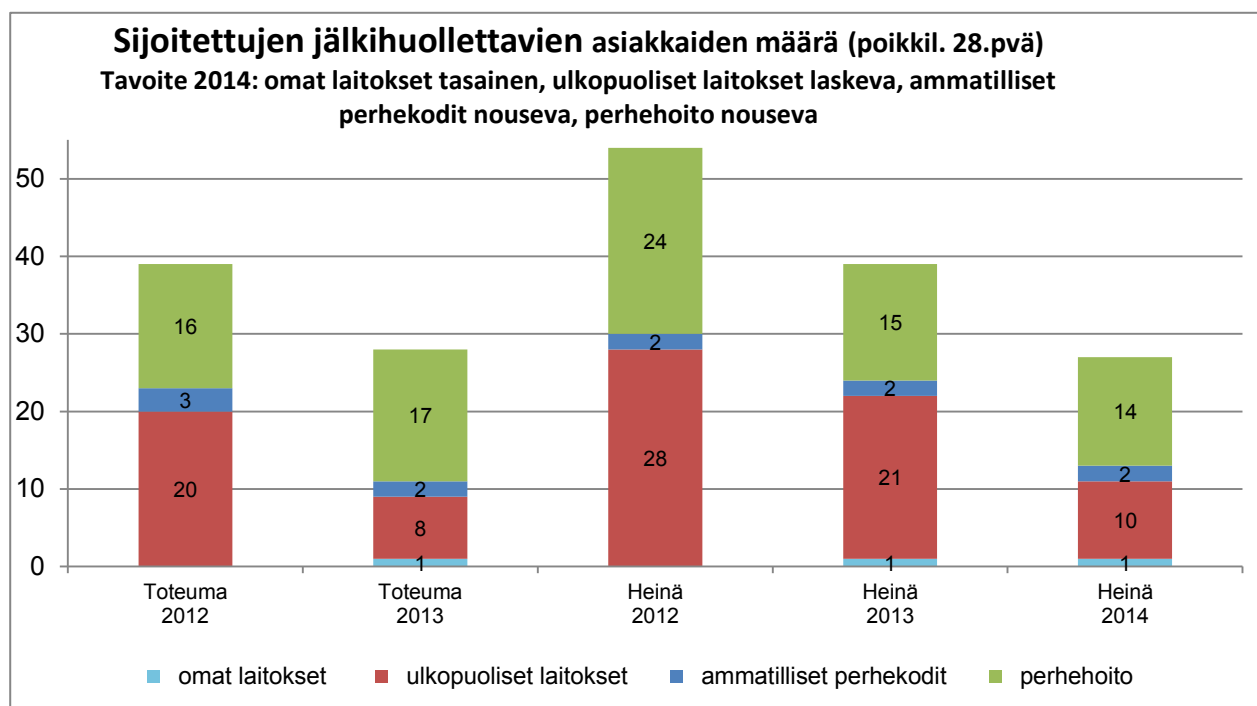
Toimentulotukea saavien kotitalouksien määrä (kumulat.)



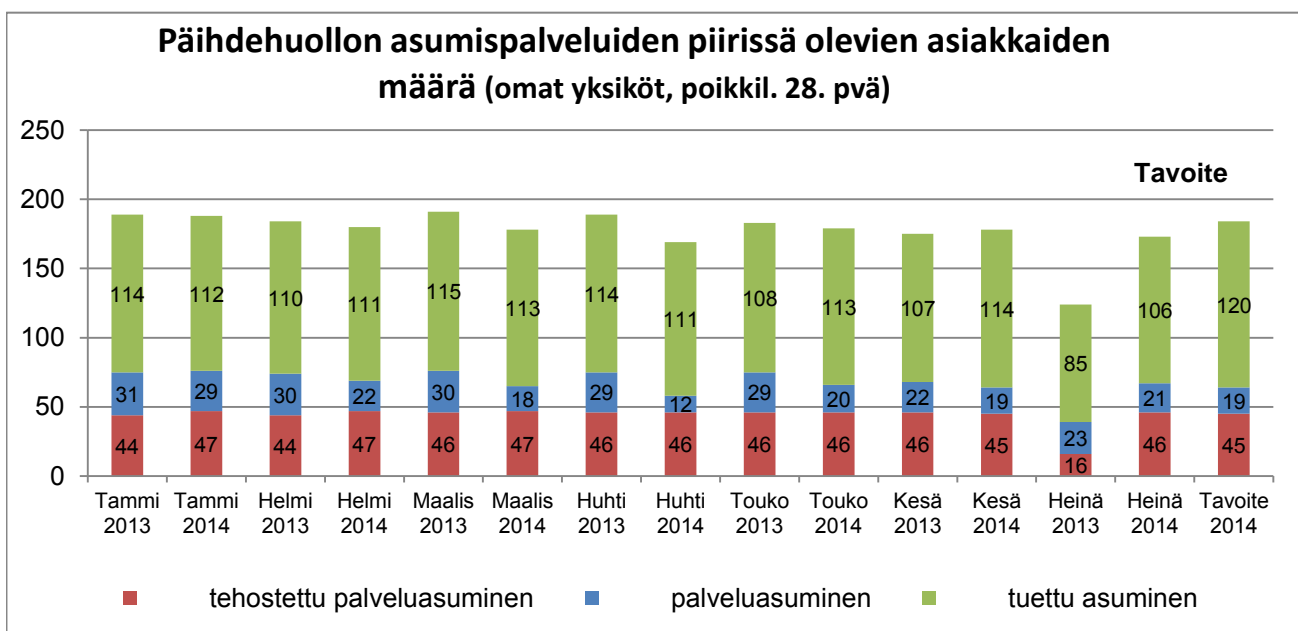
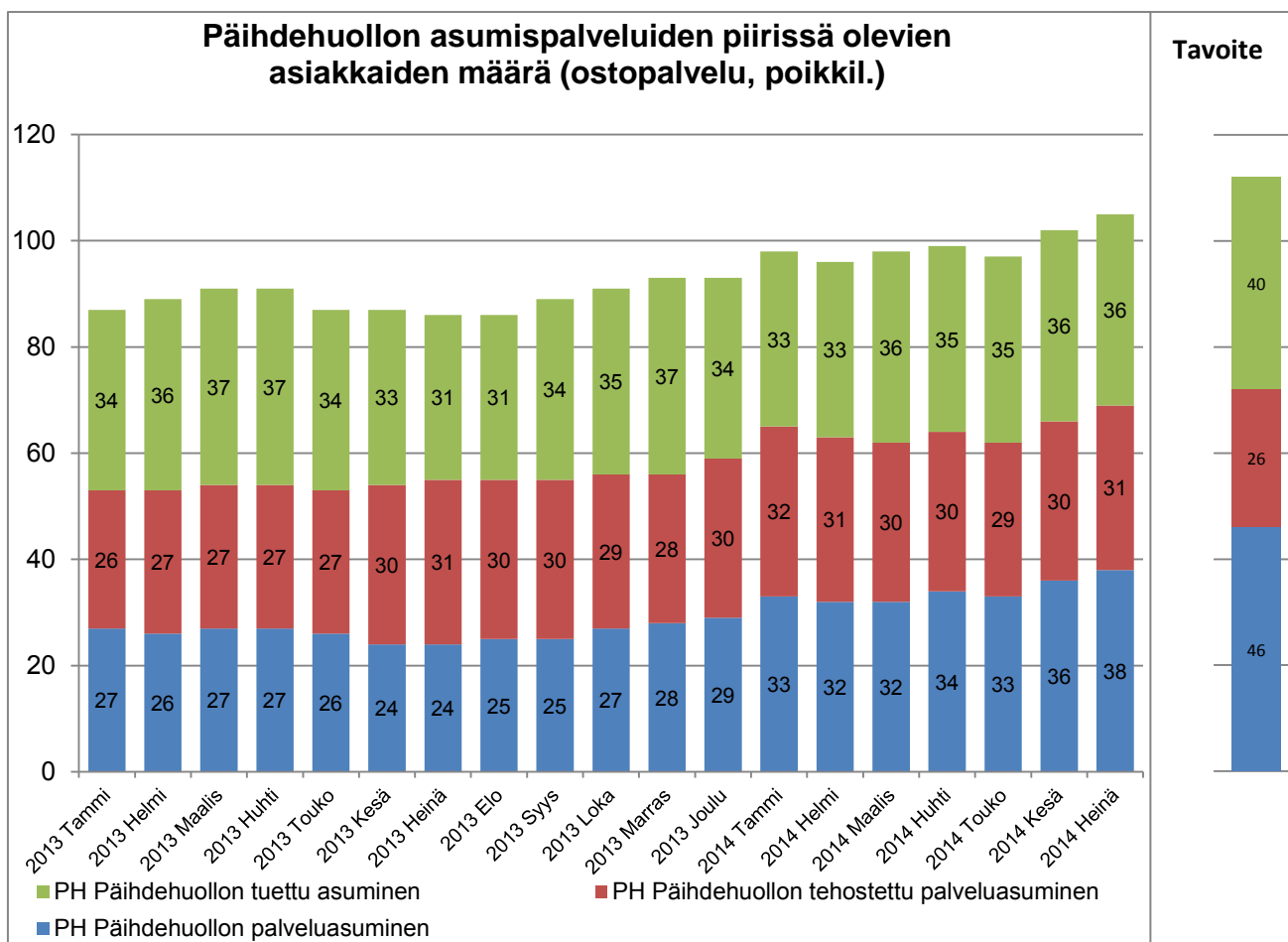


Sijaishuollon sosiaalityö

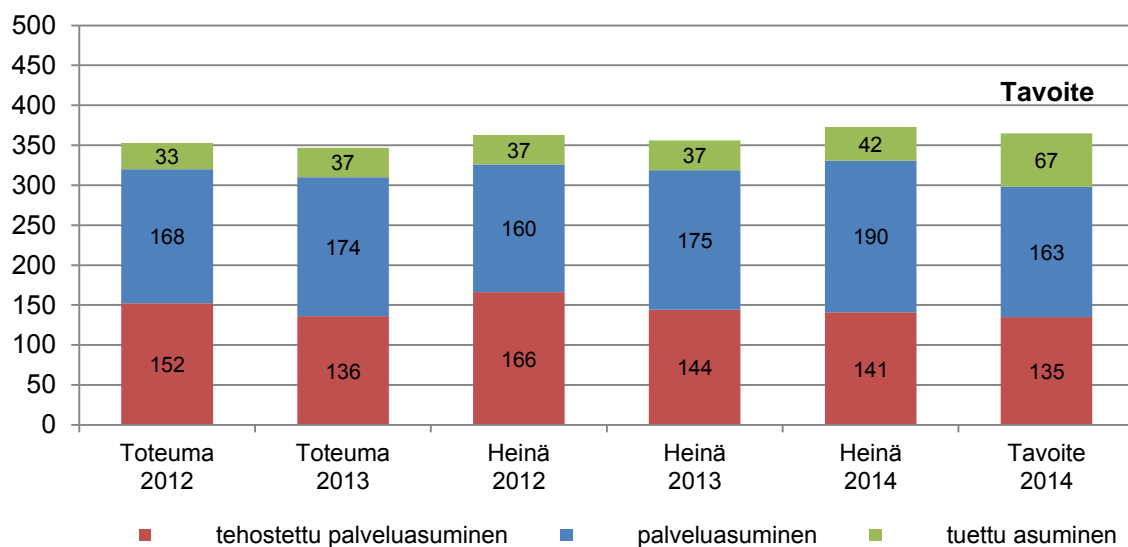




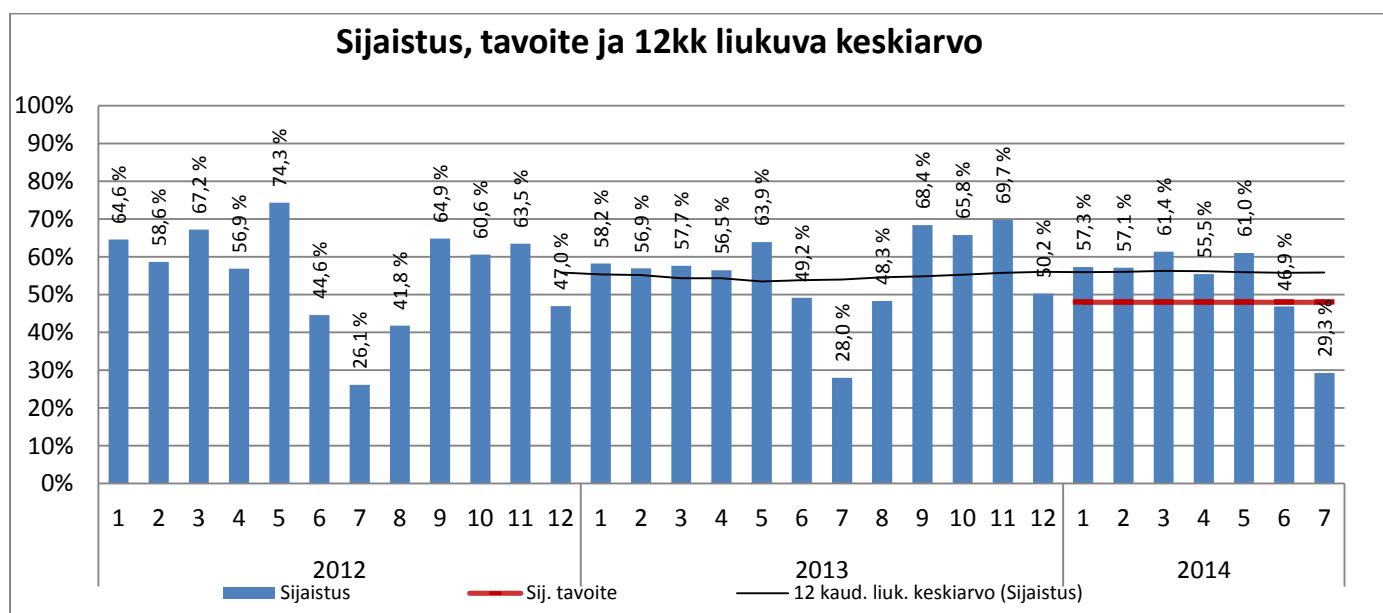
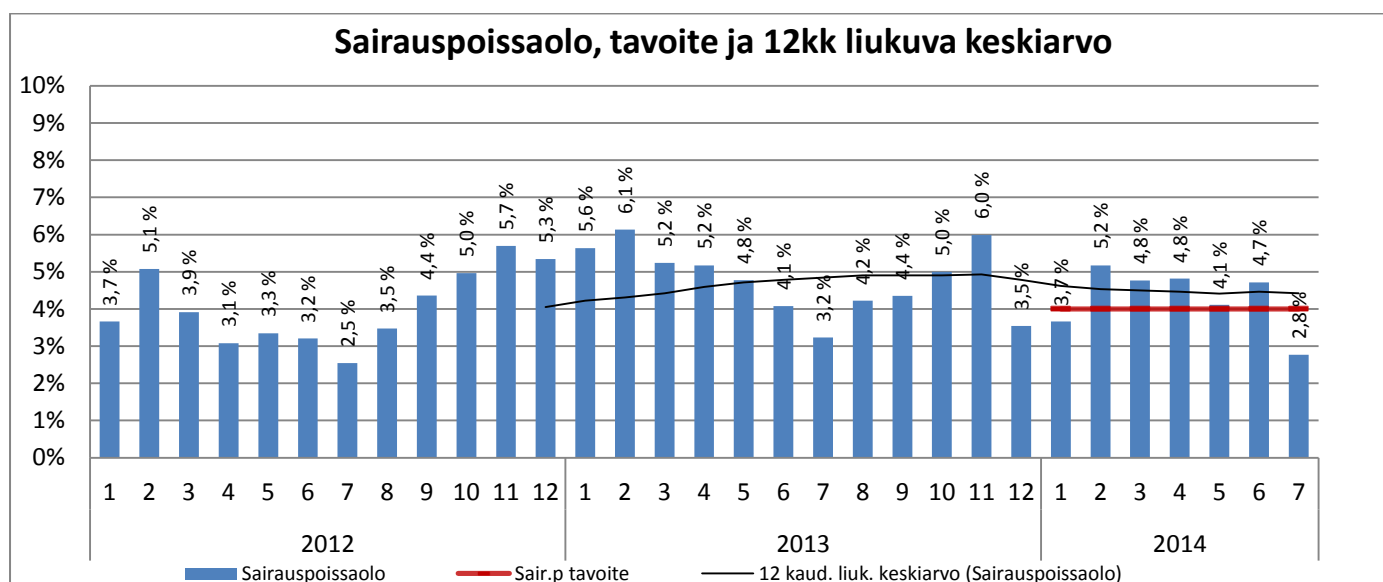
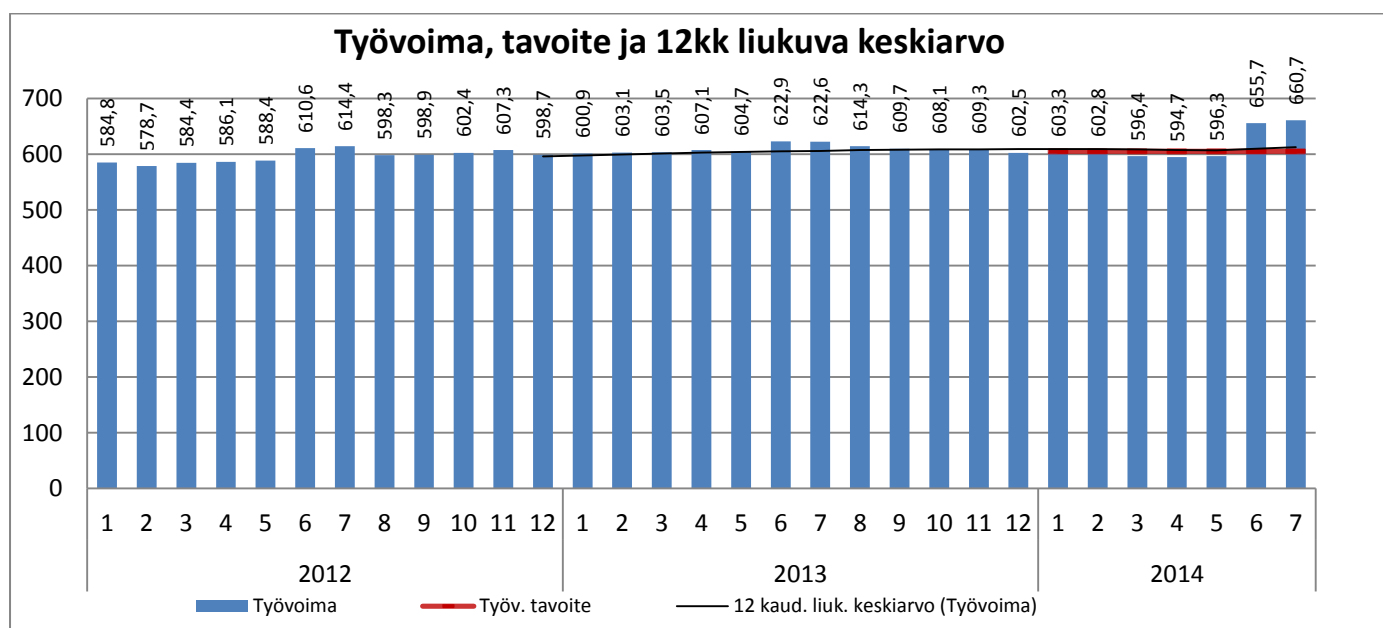
Sosiaalityön erityispalvelut



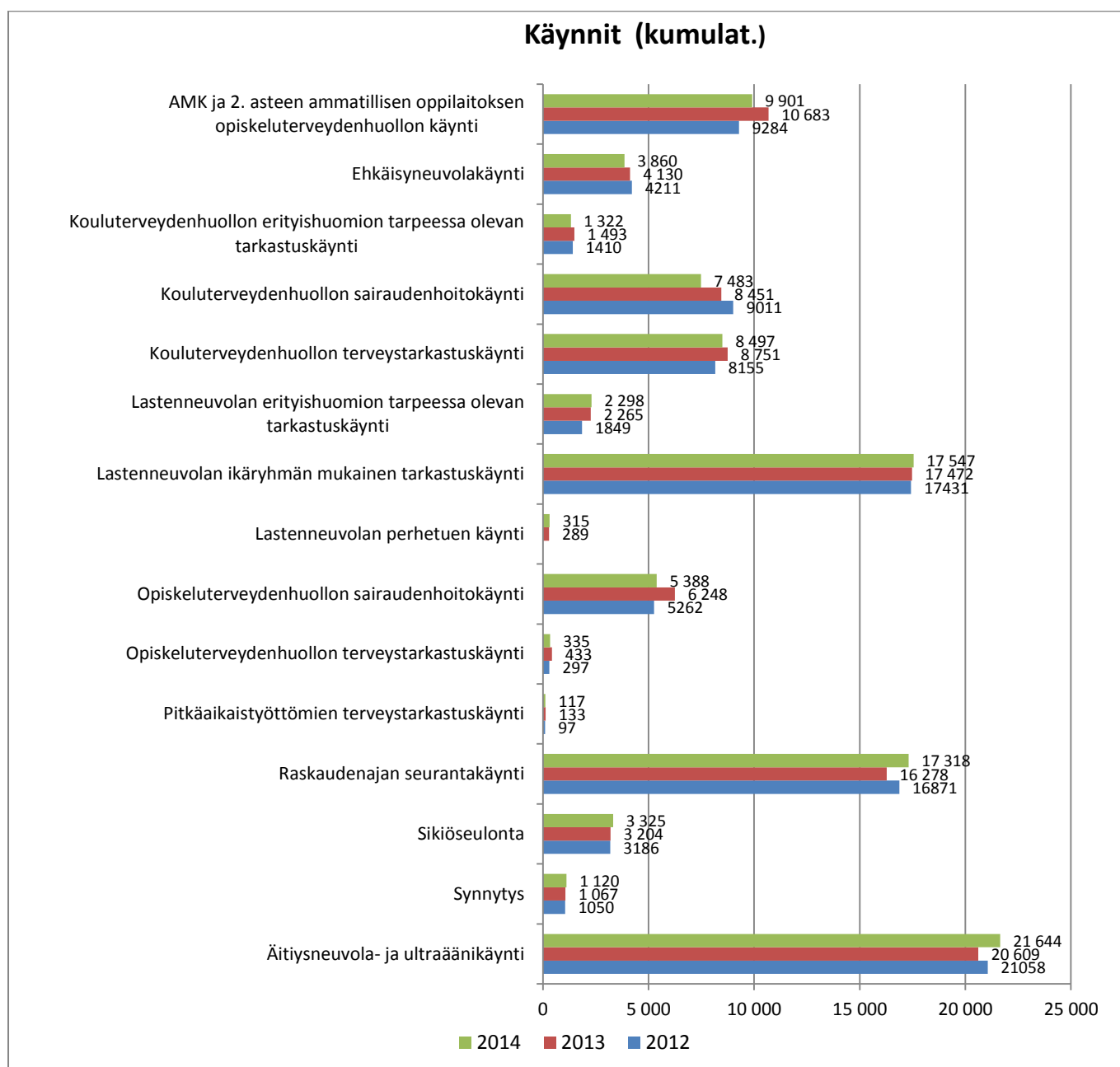
Mielenterveyskuntoutujien asumispalveluiden piirissä olevien asiakkaiden määrä (ostopalvelu, poikkil. 28.pvä)



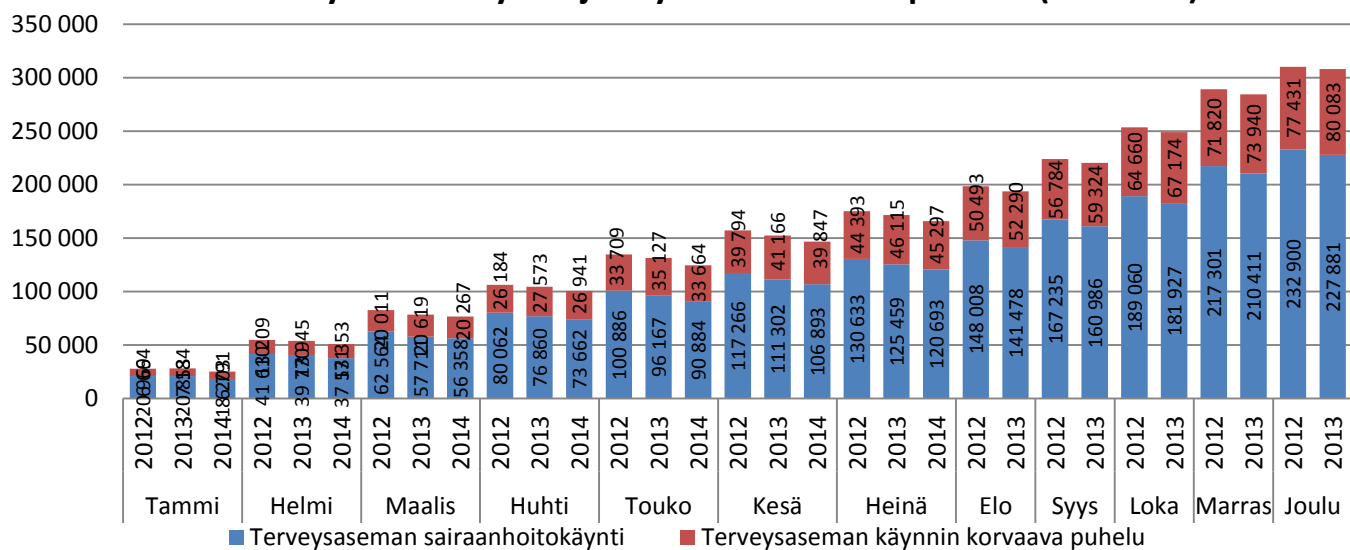
PERUSTERVEYDENHUOLTO



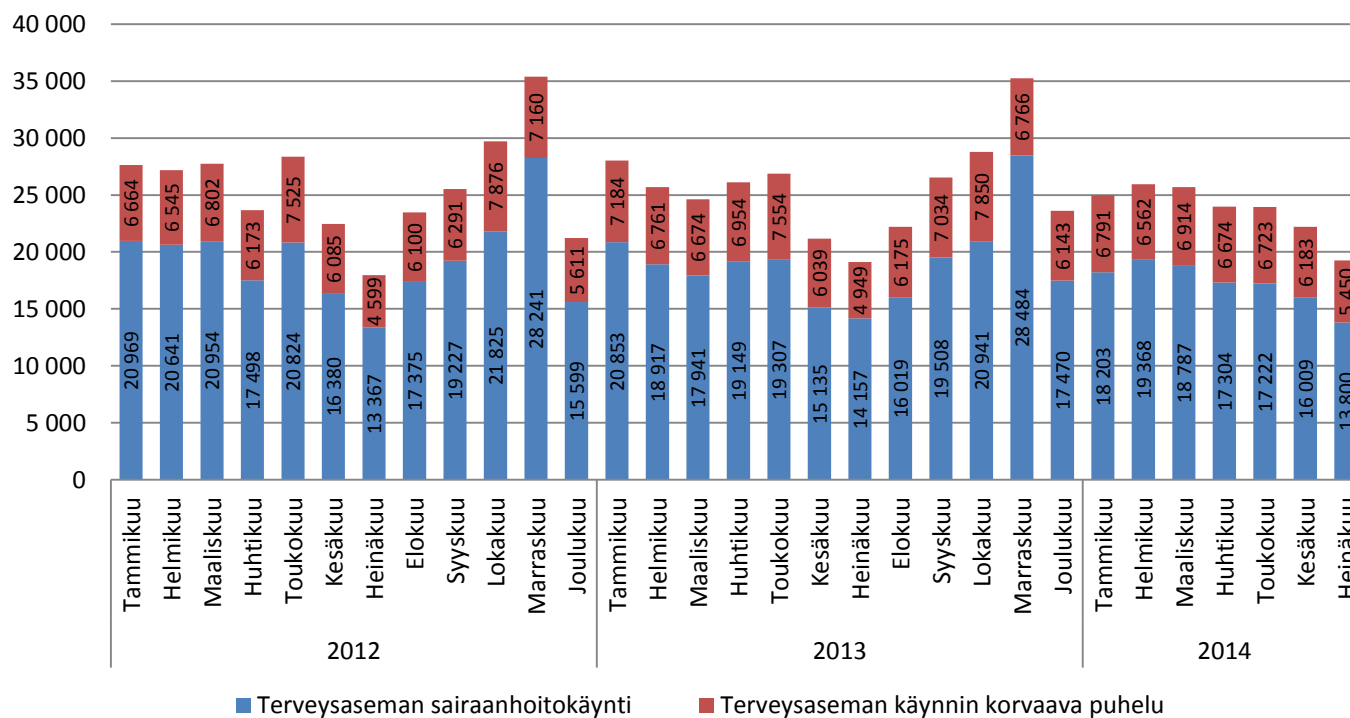
Kumulat. tarkoittaa asiastapahtumien summaa tai eri asiakkaiden määrää vuoden alusta raportointikuukauden loppuun (tammi-heinäkuu).



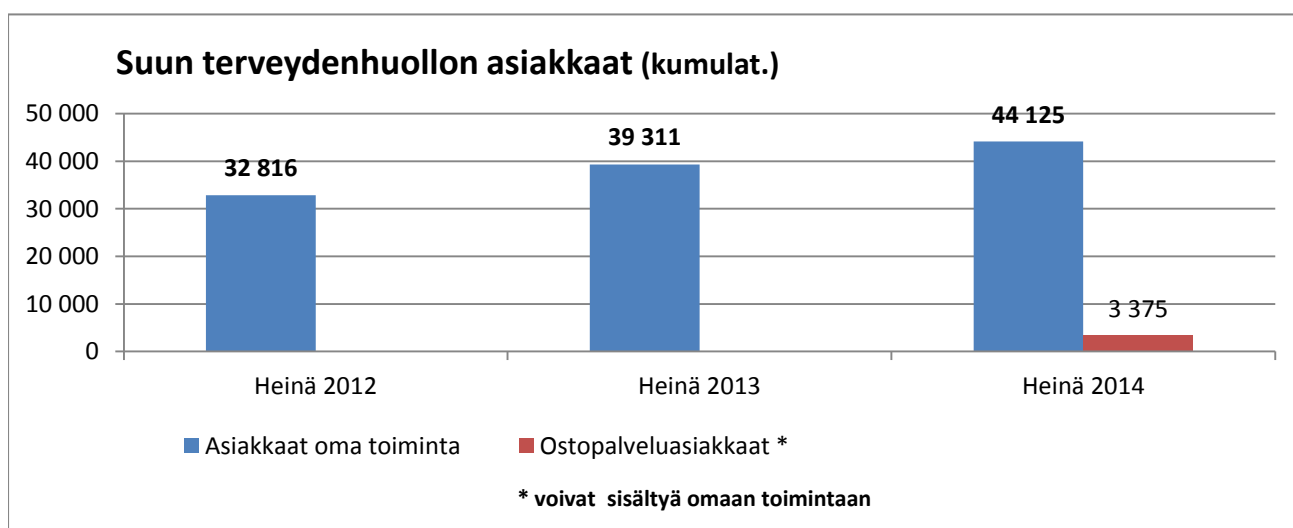
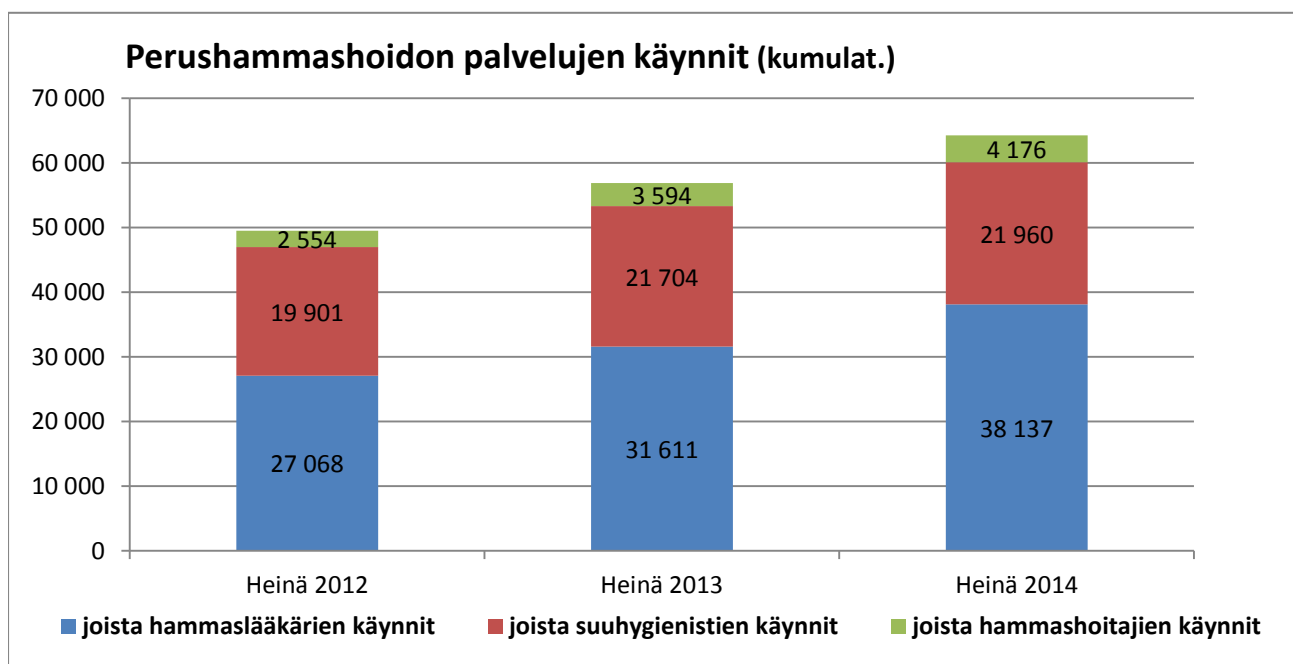
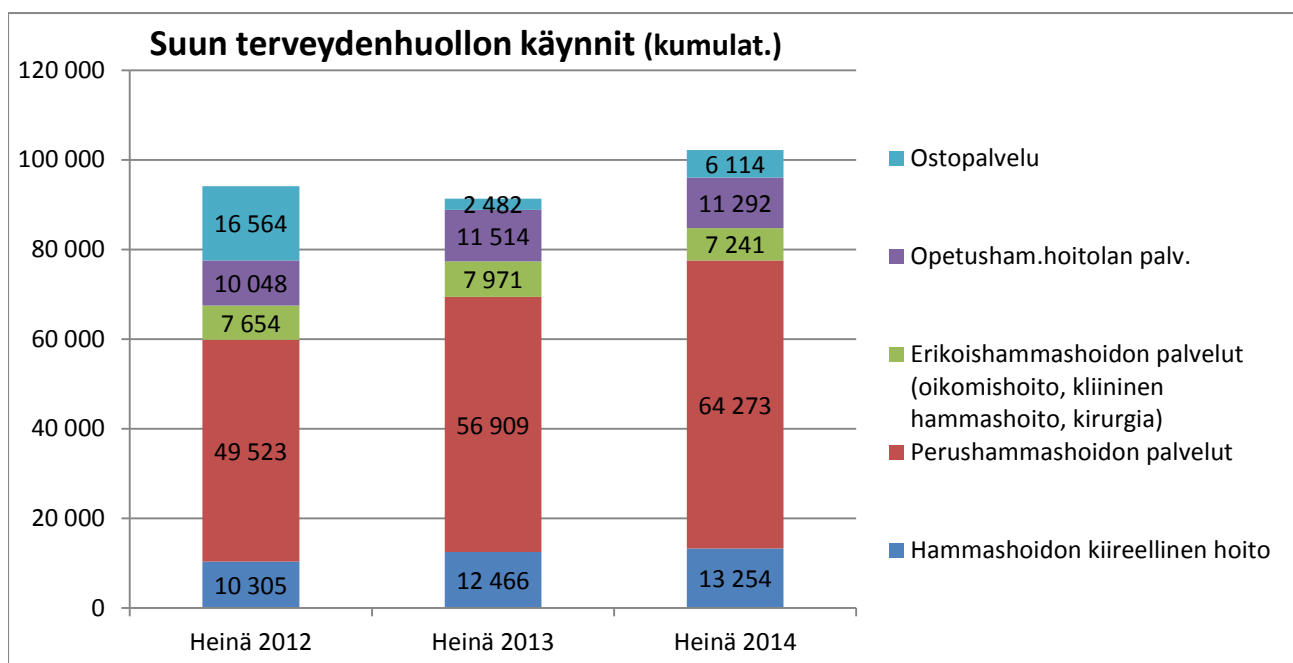
Terveysasemakäynnit ja käynnin korvaavat puhelut (kumulat.)



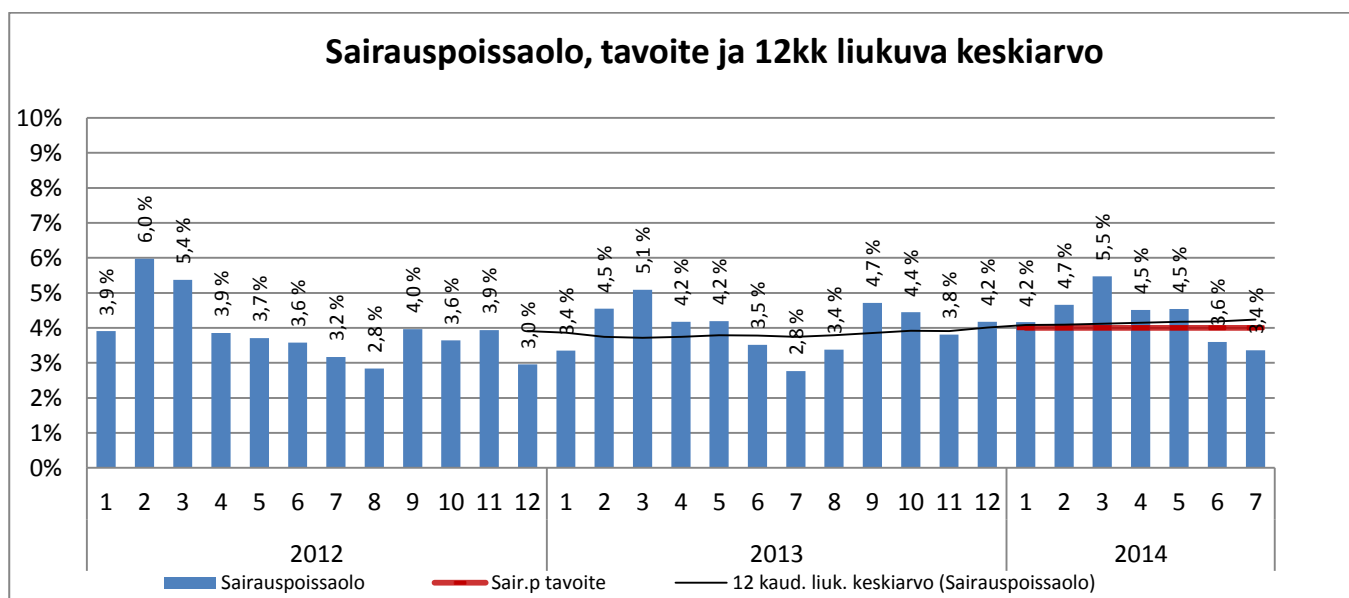
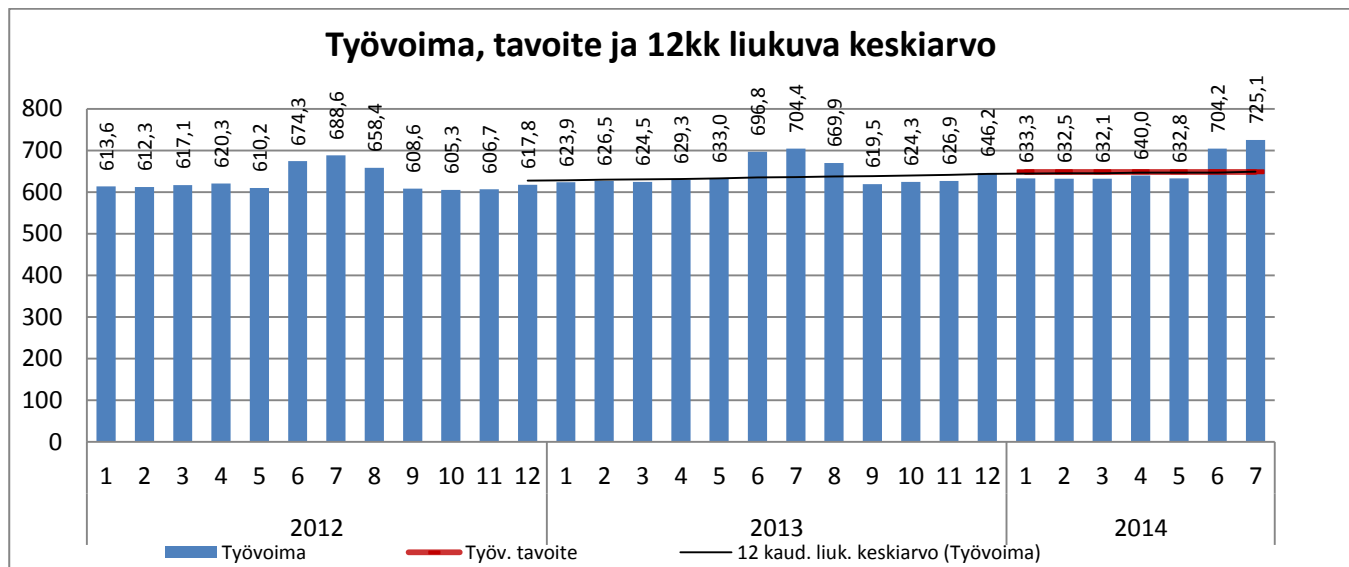
Terveysasemakäynnit ja käynnin korvaavat puhelut kuukausittain



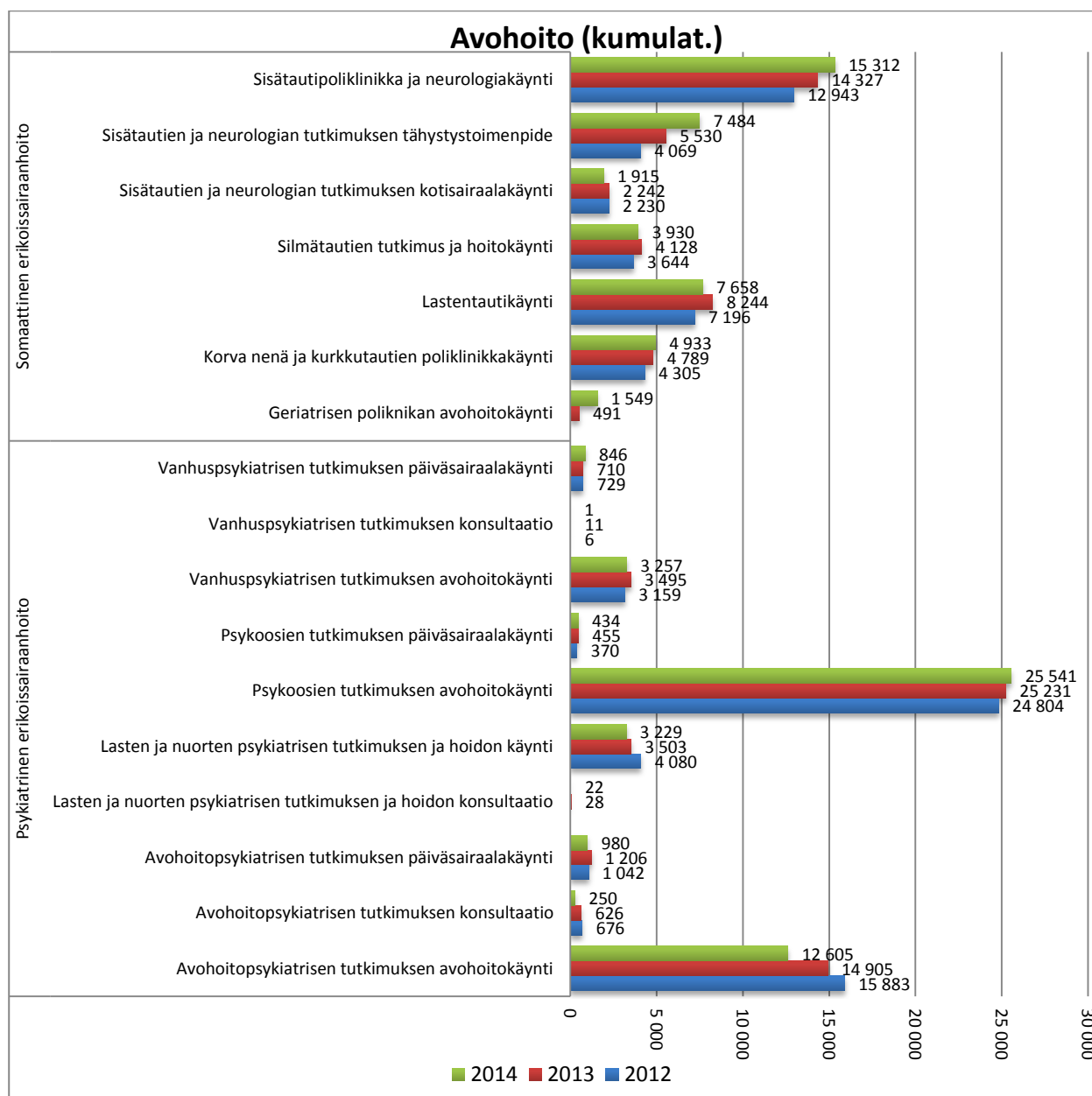
Suun terveydenhuolto



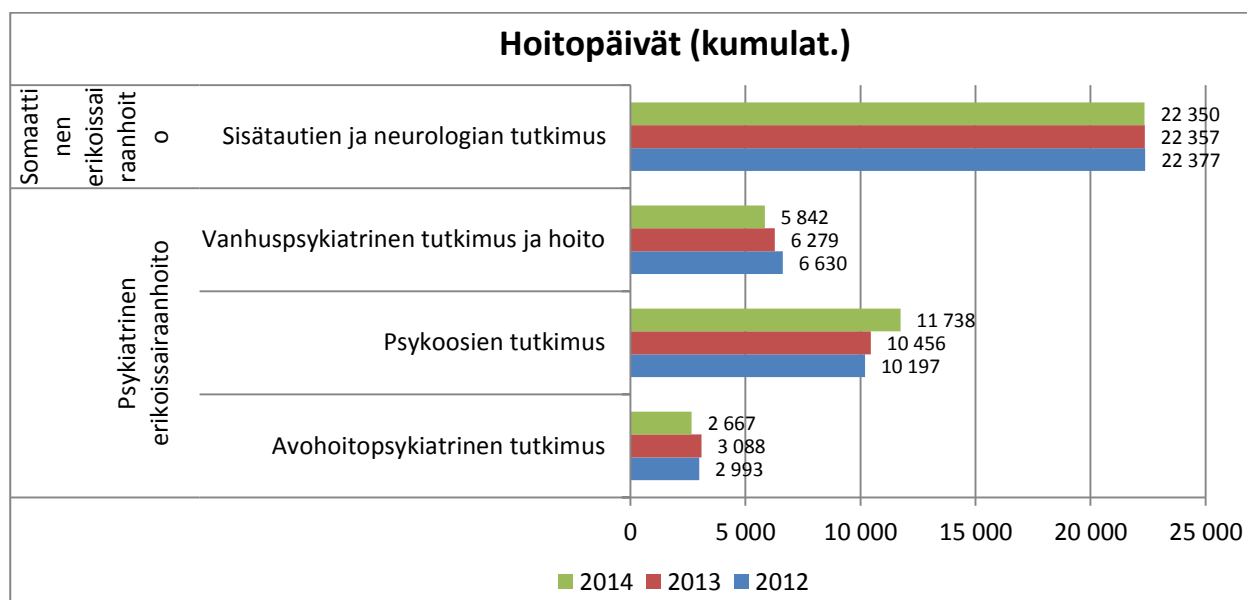
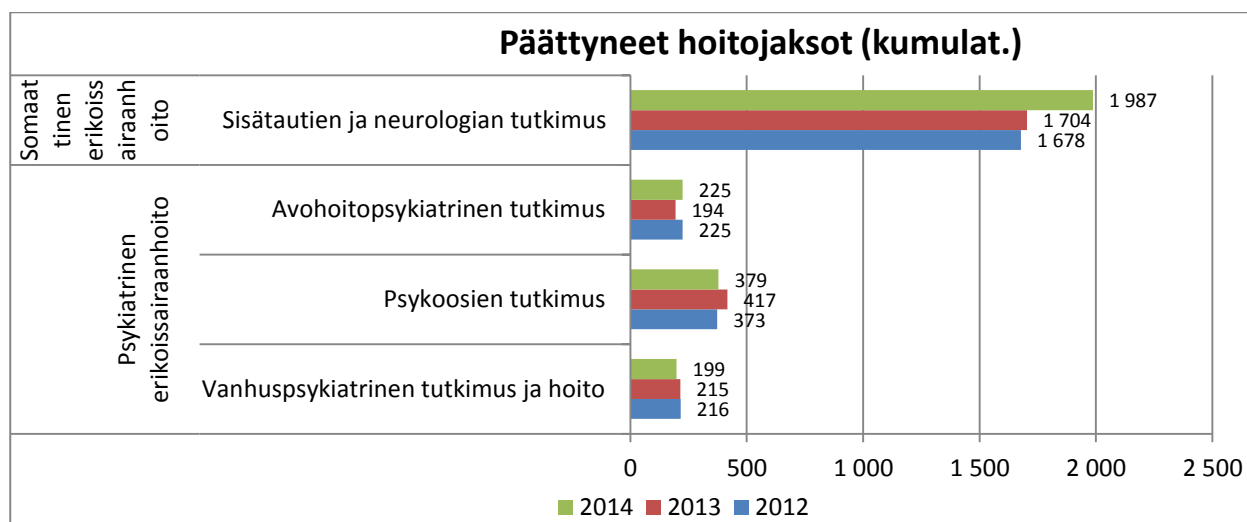
ERIKOISSAIRAANHOITO



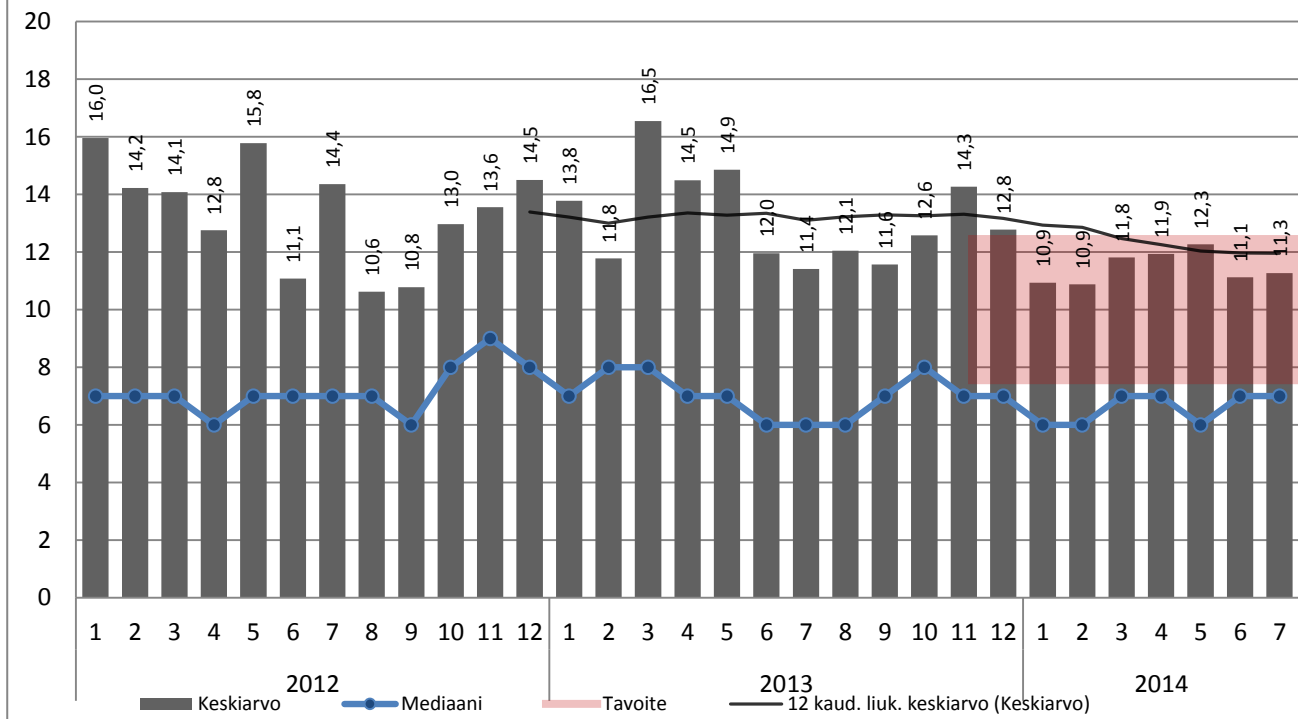
Oma toiminta: Avohoito



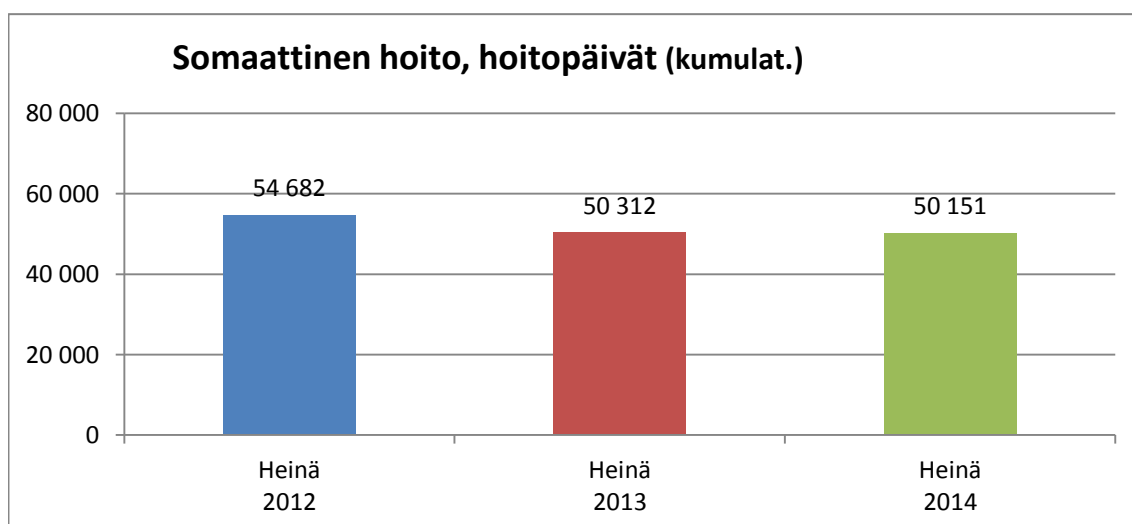
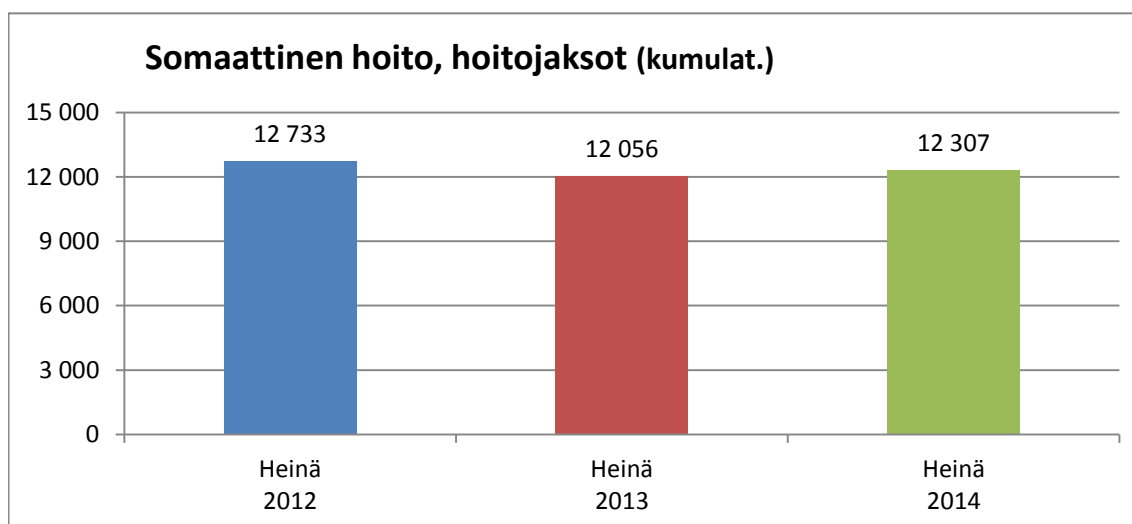
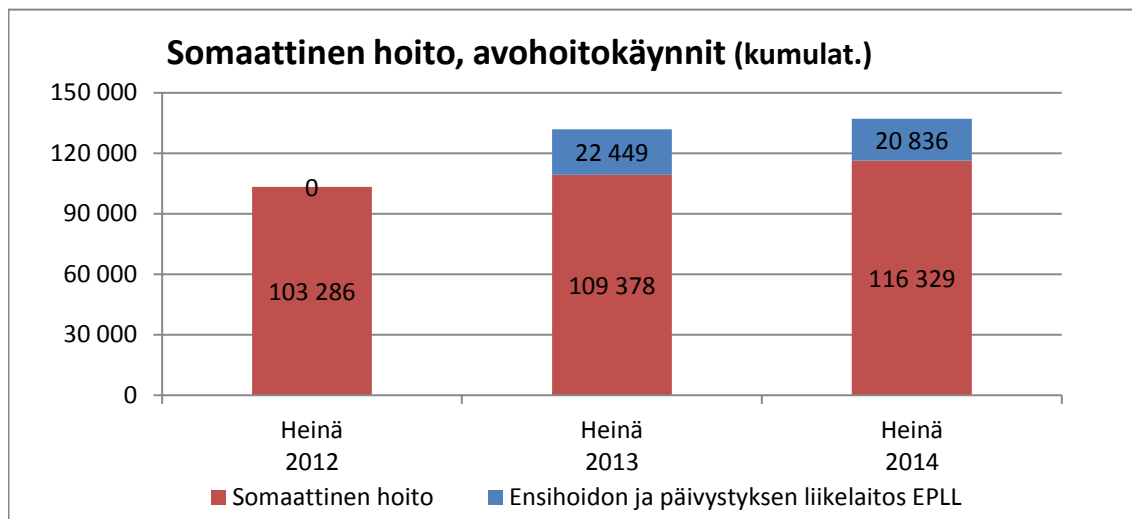
Oma toiminta: Sairaalahoito

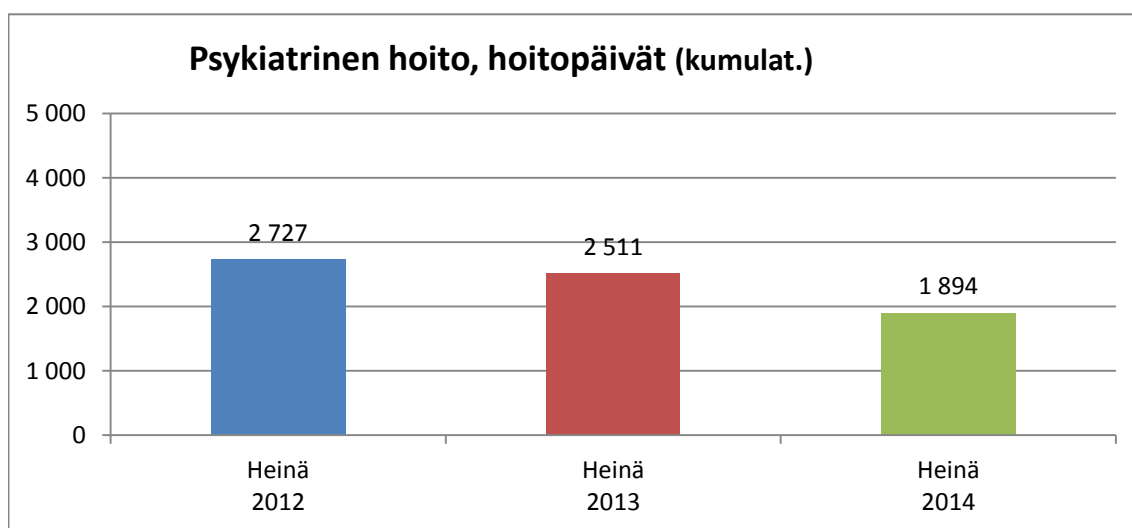
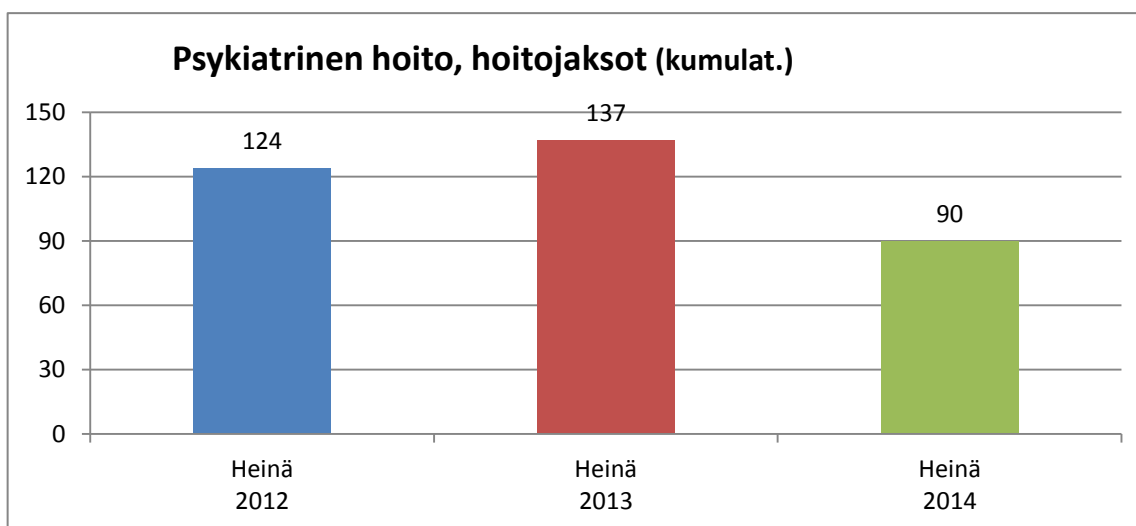
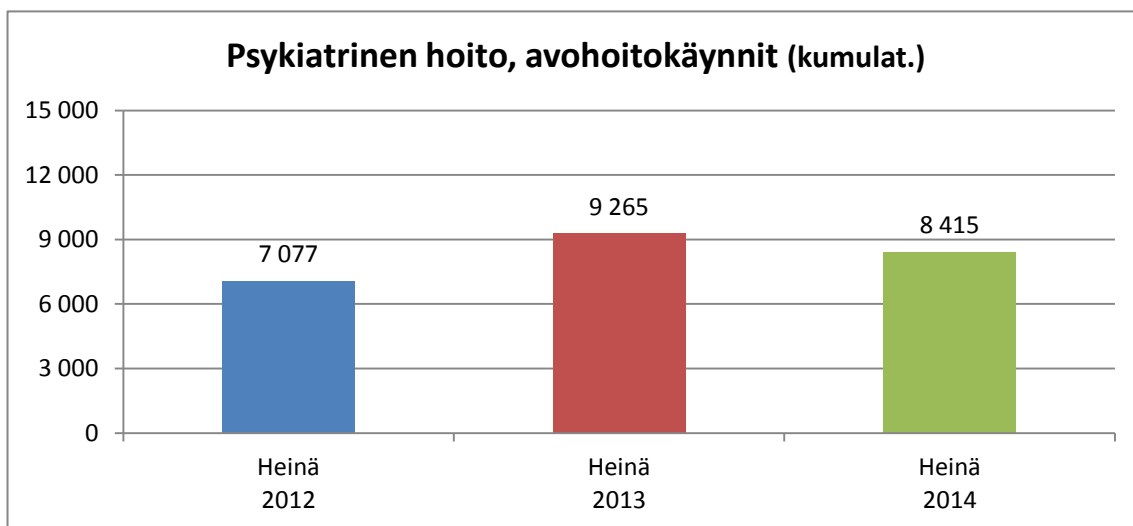


Oman esh:n som. hoitajaksojen pituus, tavoite 2014: 8-12 vrk

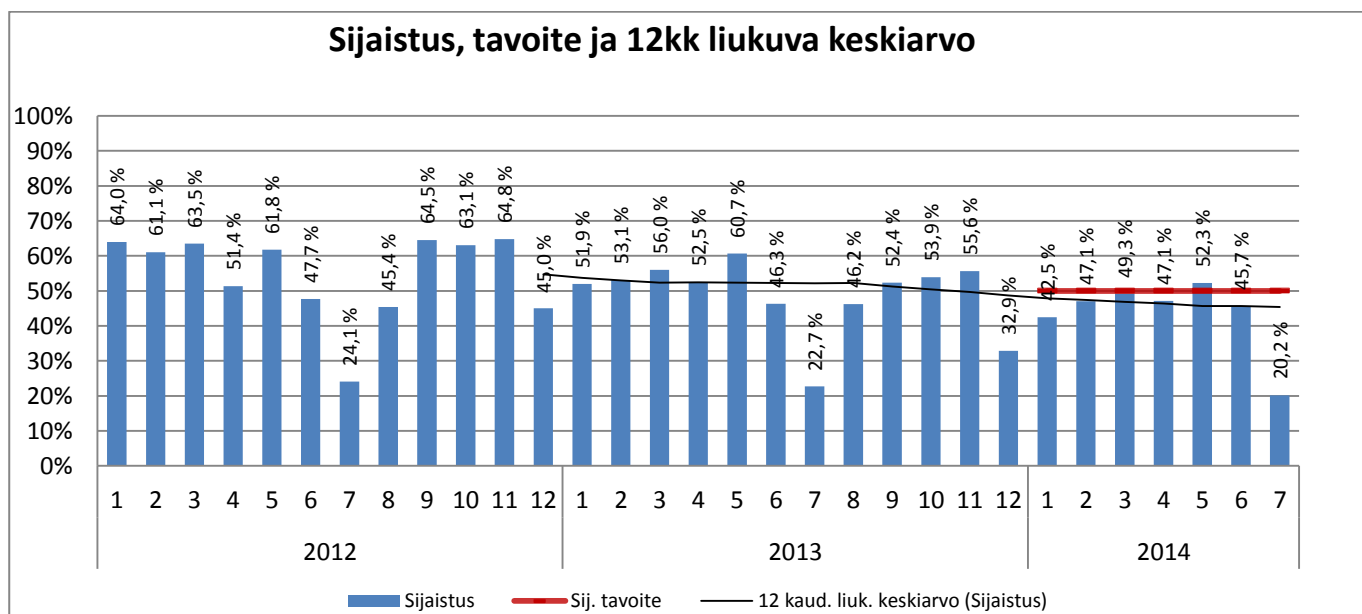
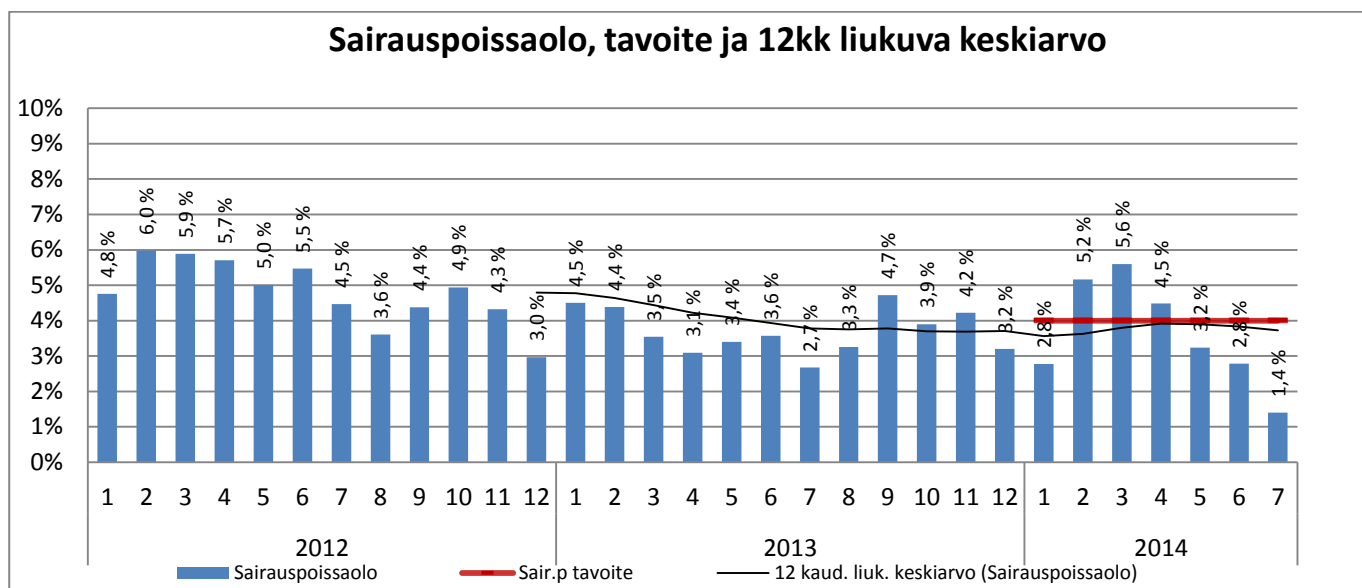
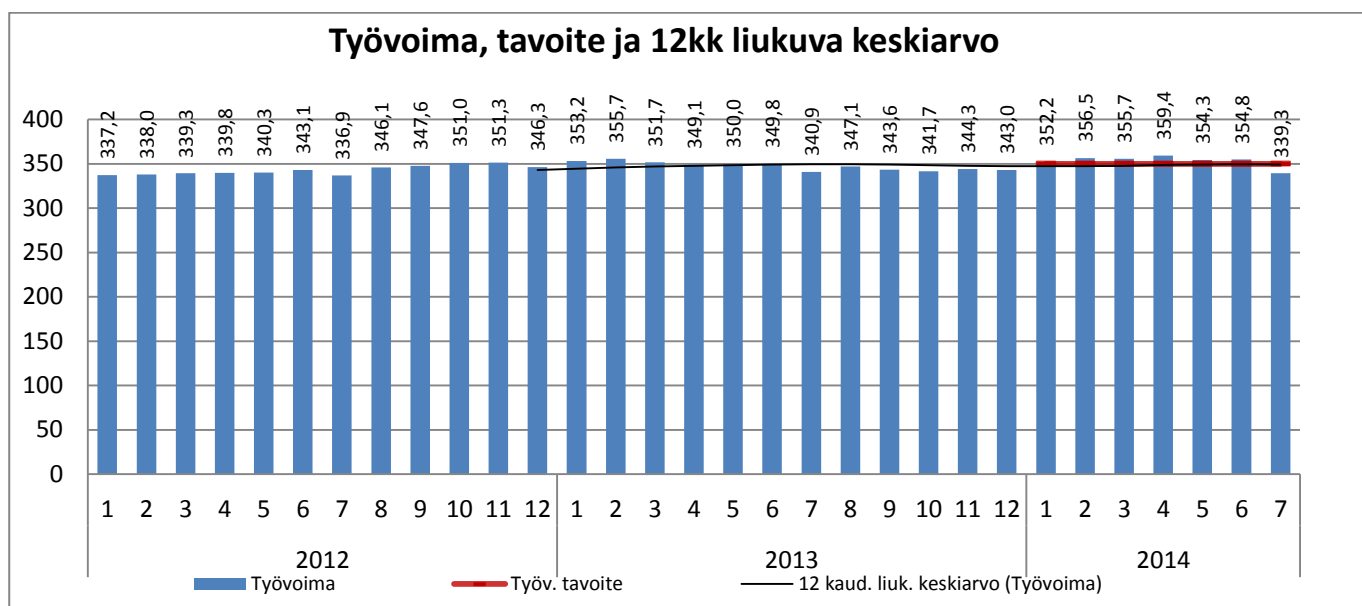


Sairaanhoitopiiri



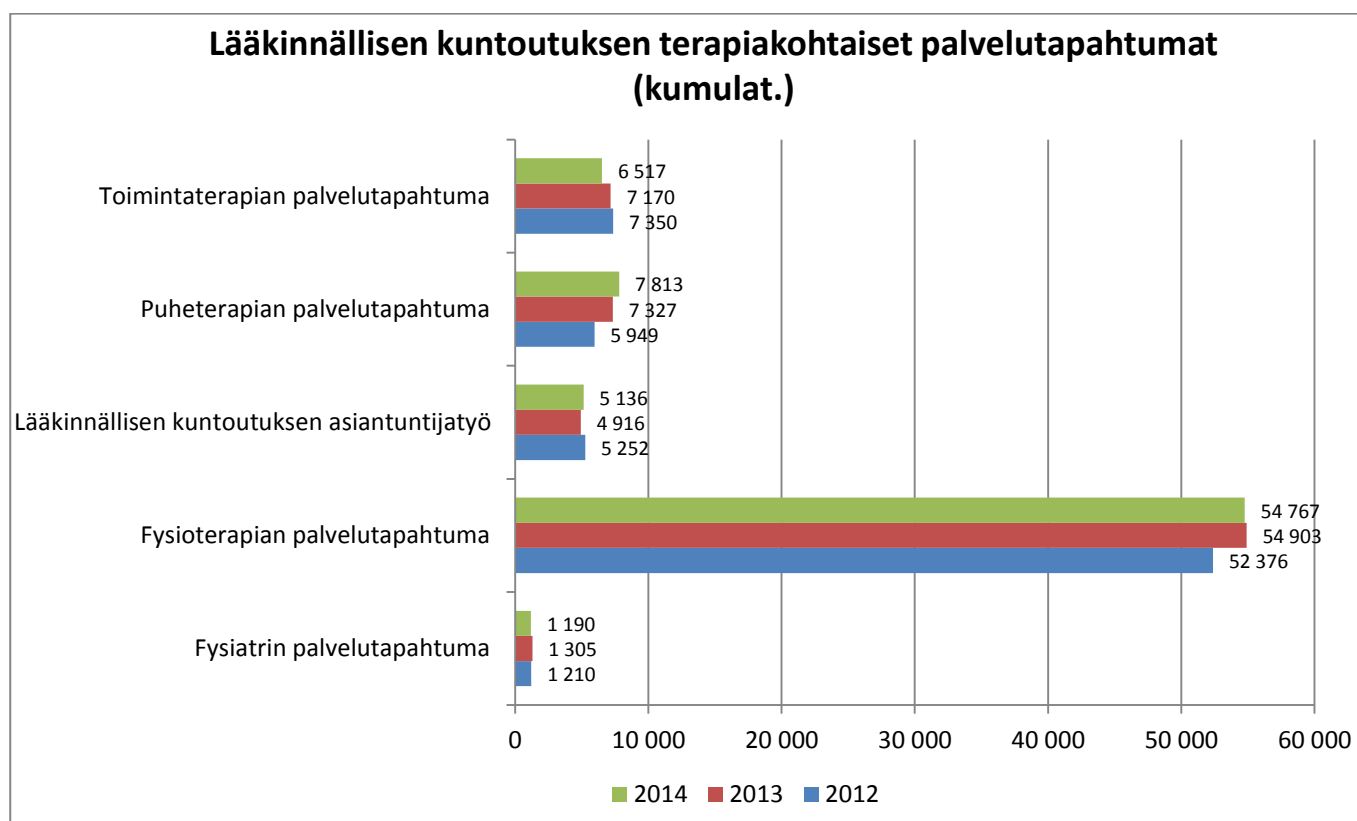
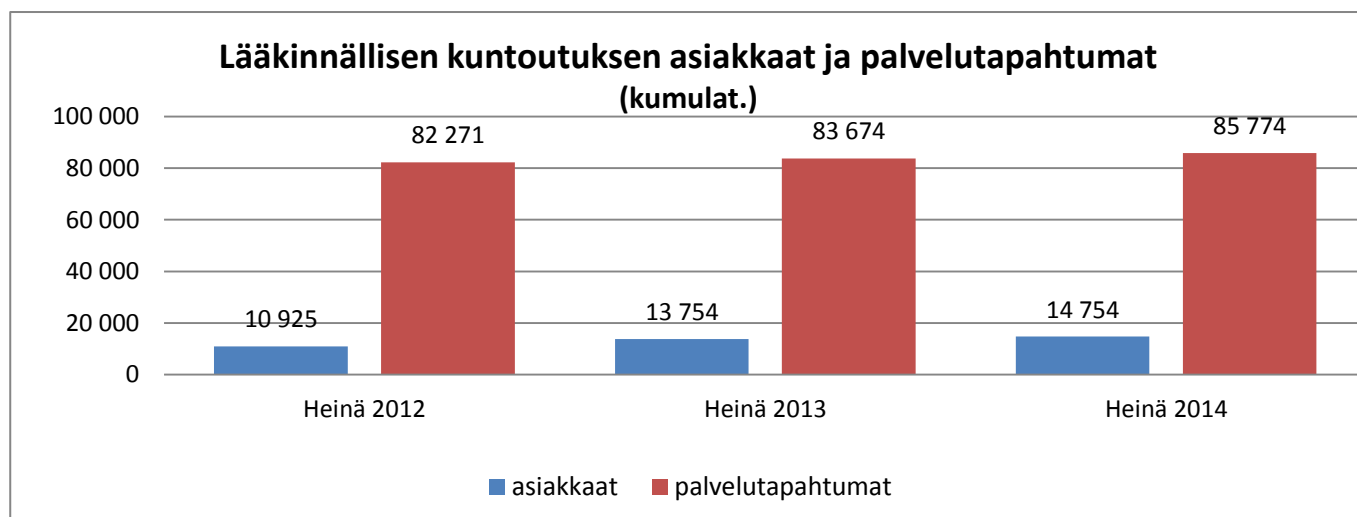


KUNTOAUTUMISPALVELUT

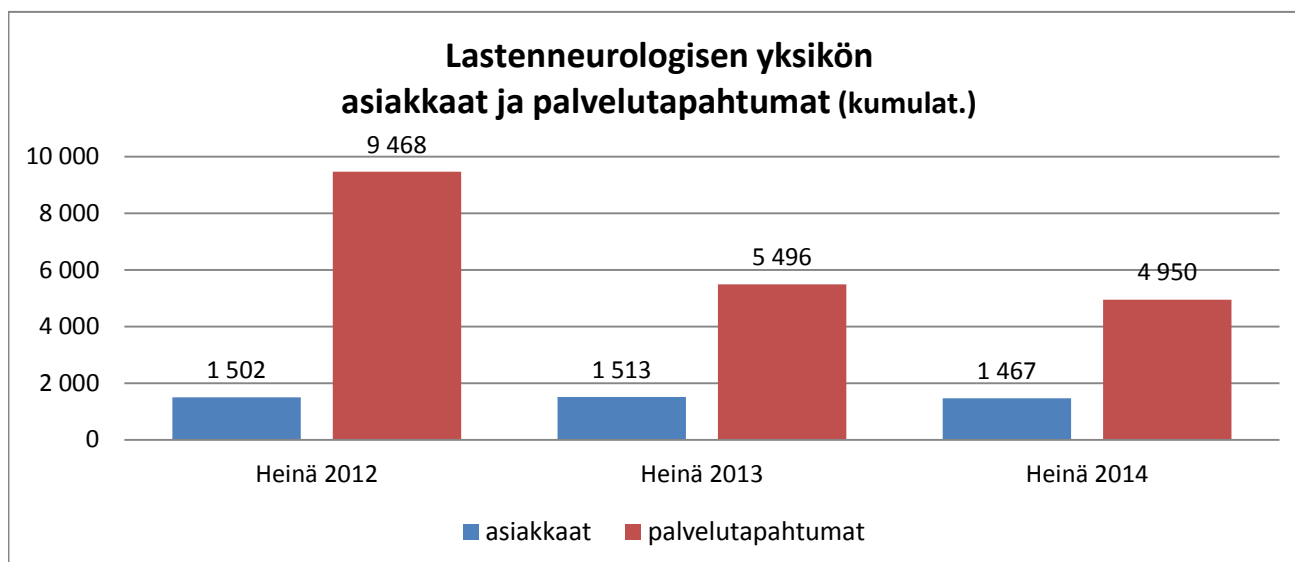


Kumulat. tarkoittaa asiakastapahtumien summaa tai eri asiakkaiden määrää vuoden alusta raportointikuukauden loppuun (tammi-heinäkuu).

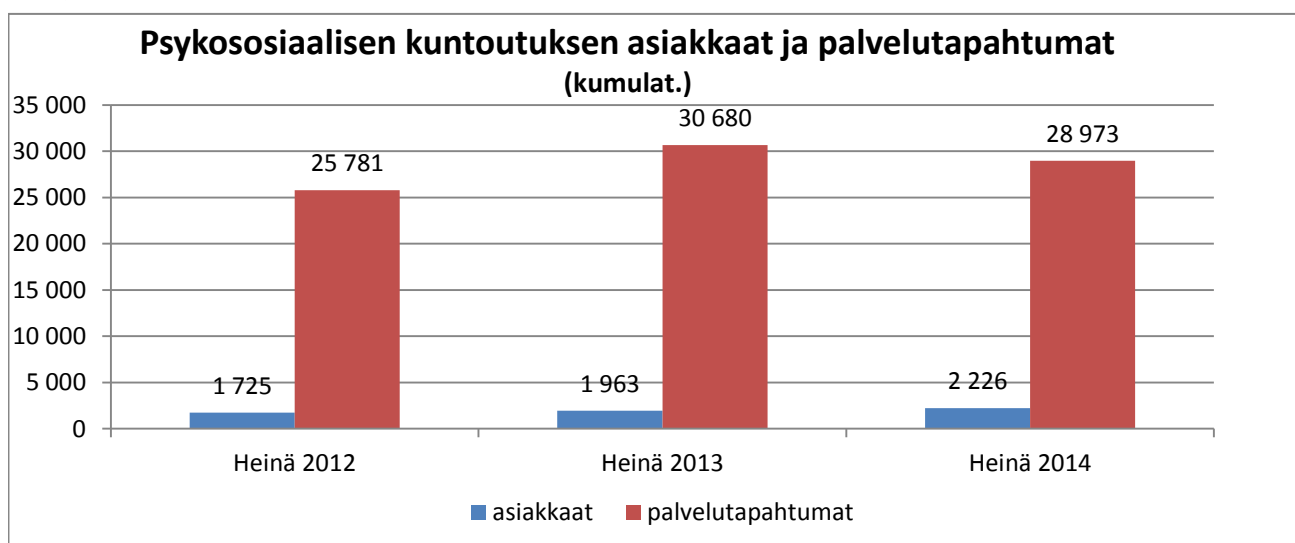
Lääkinnällinen kuntoutus



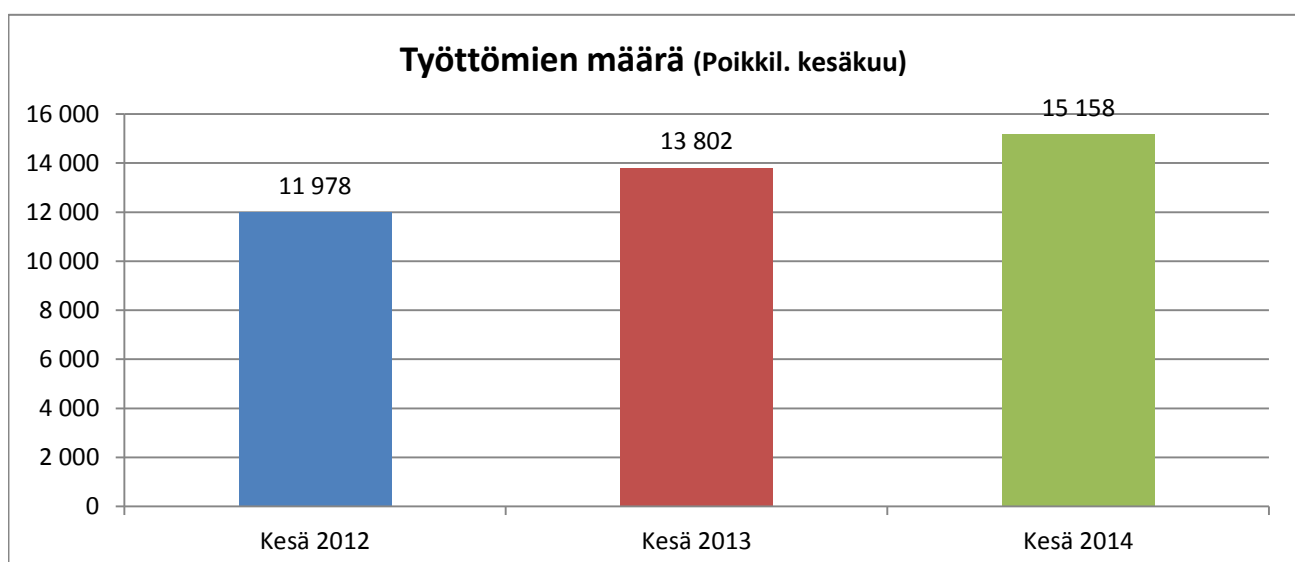
Lastenneurologinen yksikkö



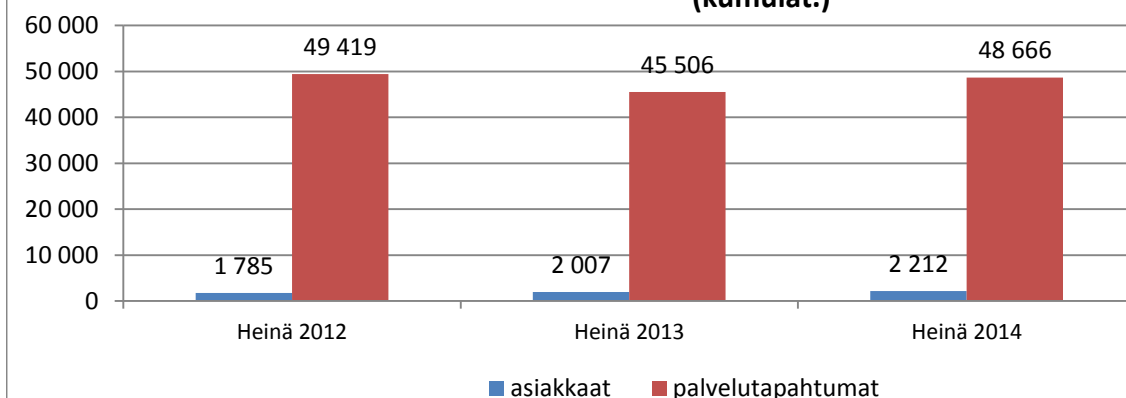
Psykososiaalinen kuntoutus



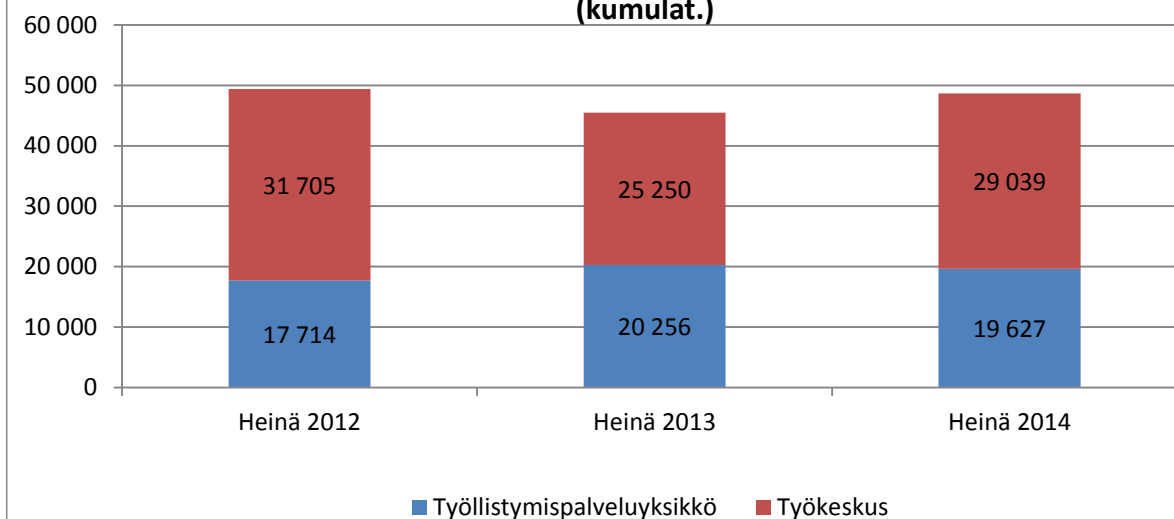
Työelämäkuntoutus



Työelämäkuntoutuksen asiakkaat (poikkil.) ja palvelutapahtumat (kumulat.)

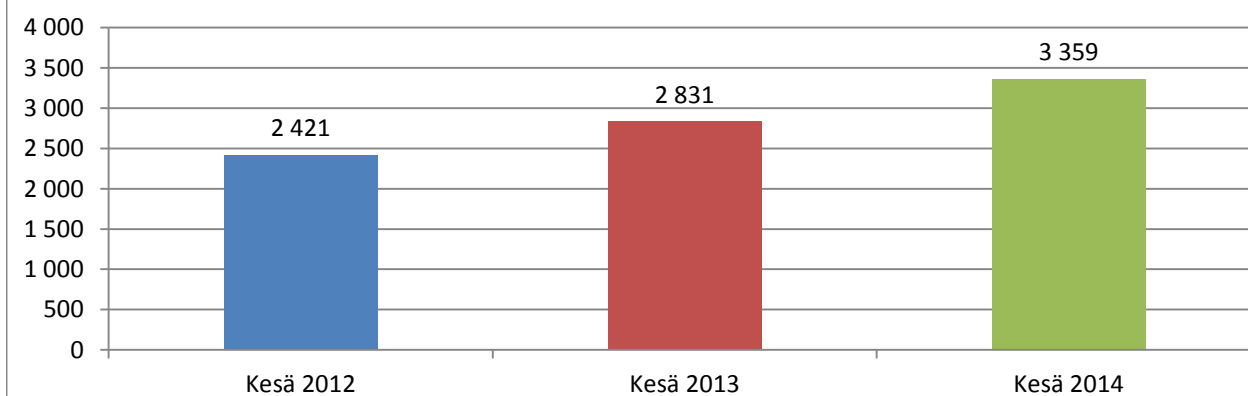


Työllistymispalveluyksikön ja työkeskuksen palvelutapahtumat (kumulat.)

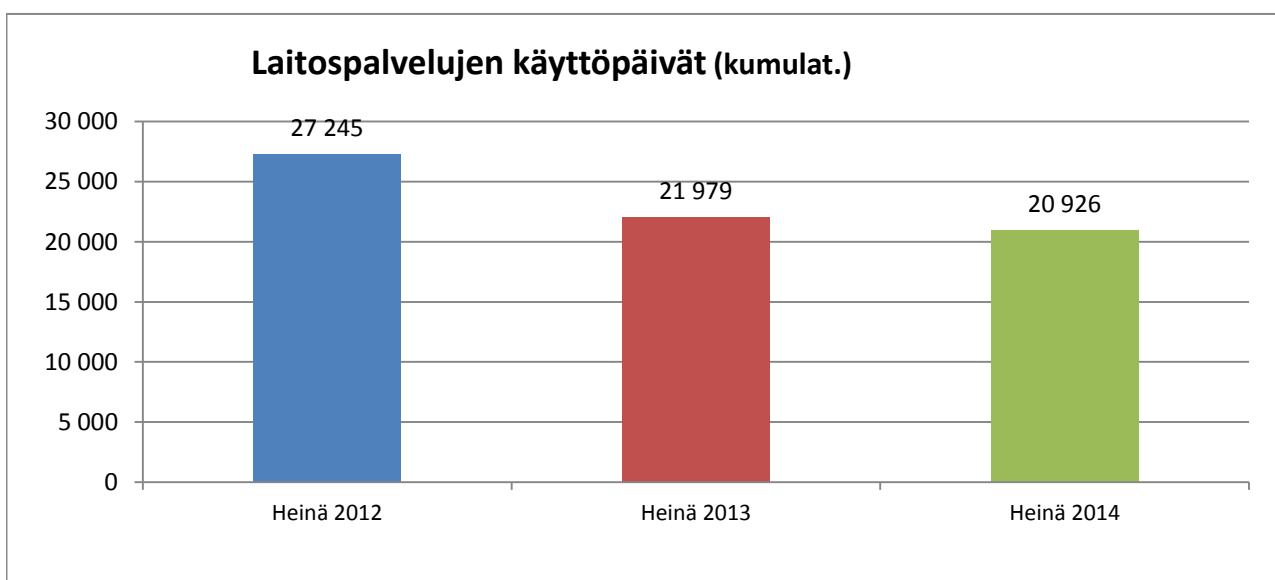
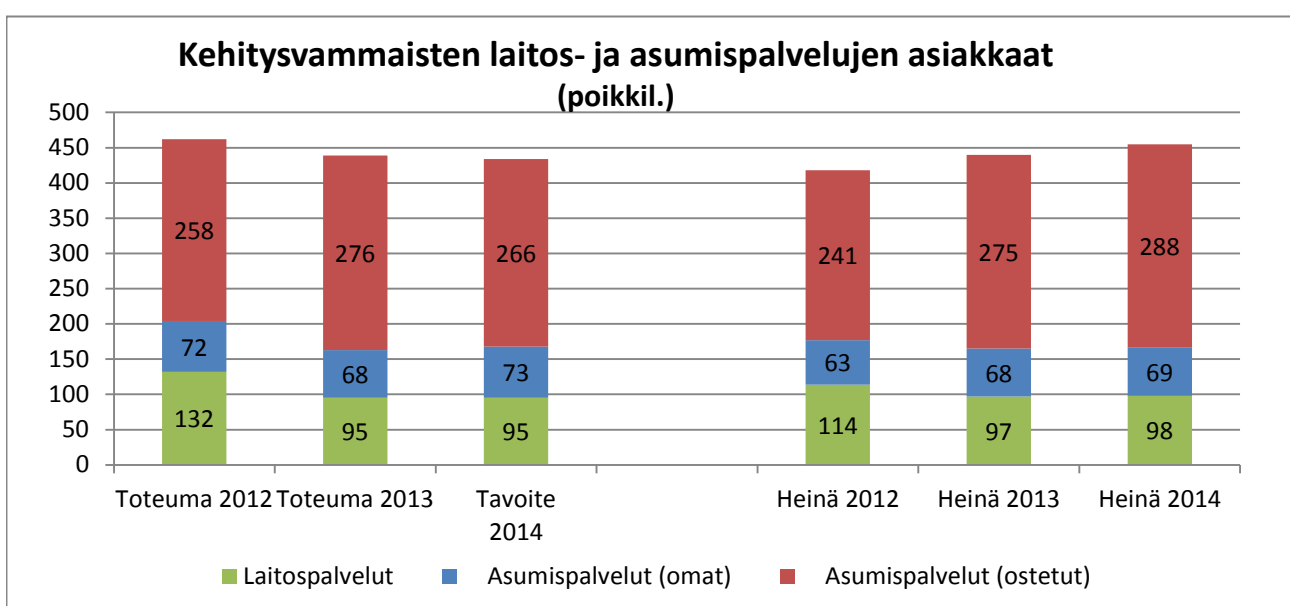
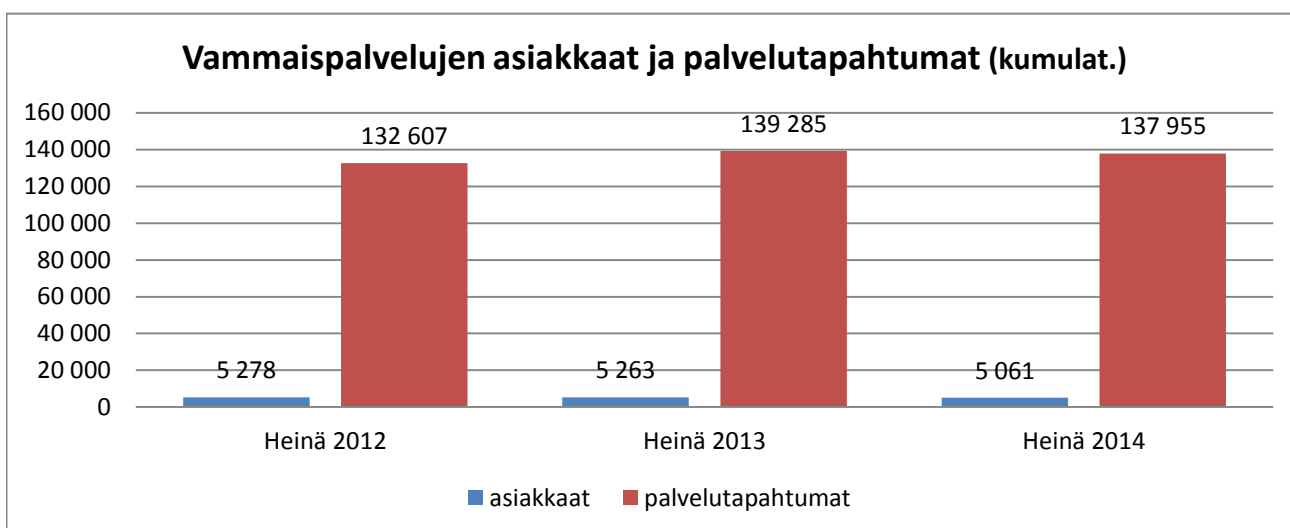


Työmarkkinatuella olevat henkilöt (poikkil. kesäkuu)

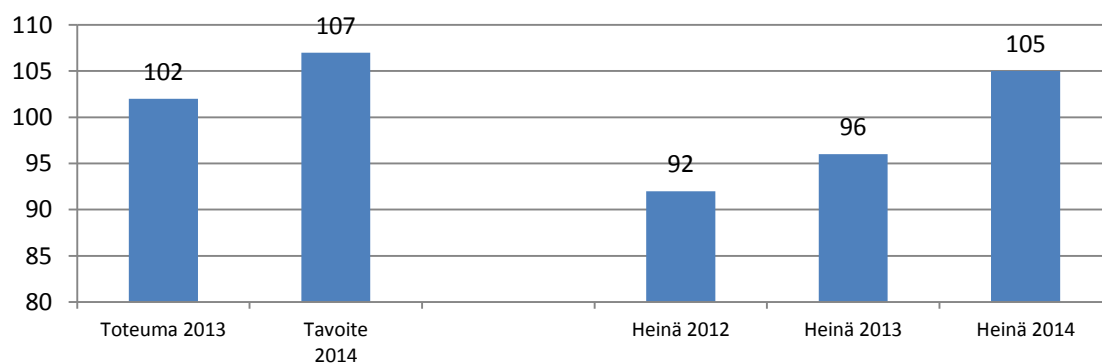
Tavoite 2014: 2700



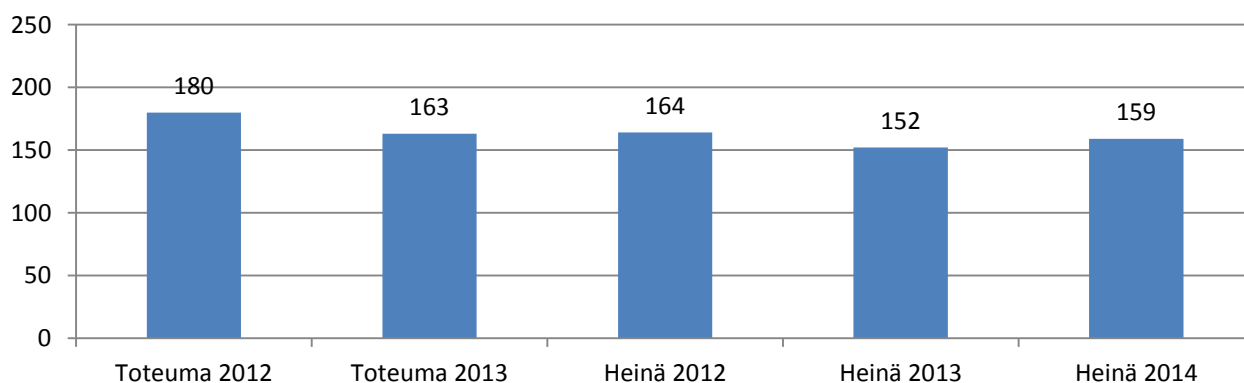
Vammaispalvelut



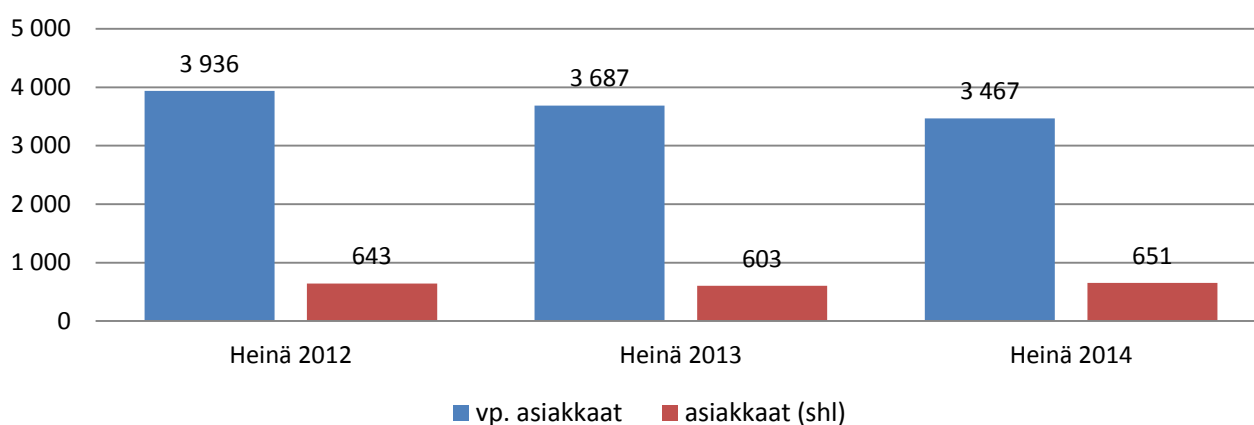
Vaikeavammaisten palveluasumisen asiakkaat (poikkil.)



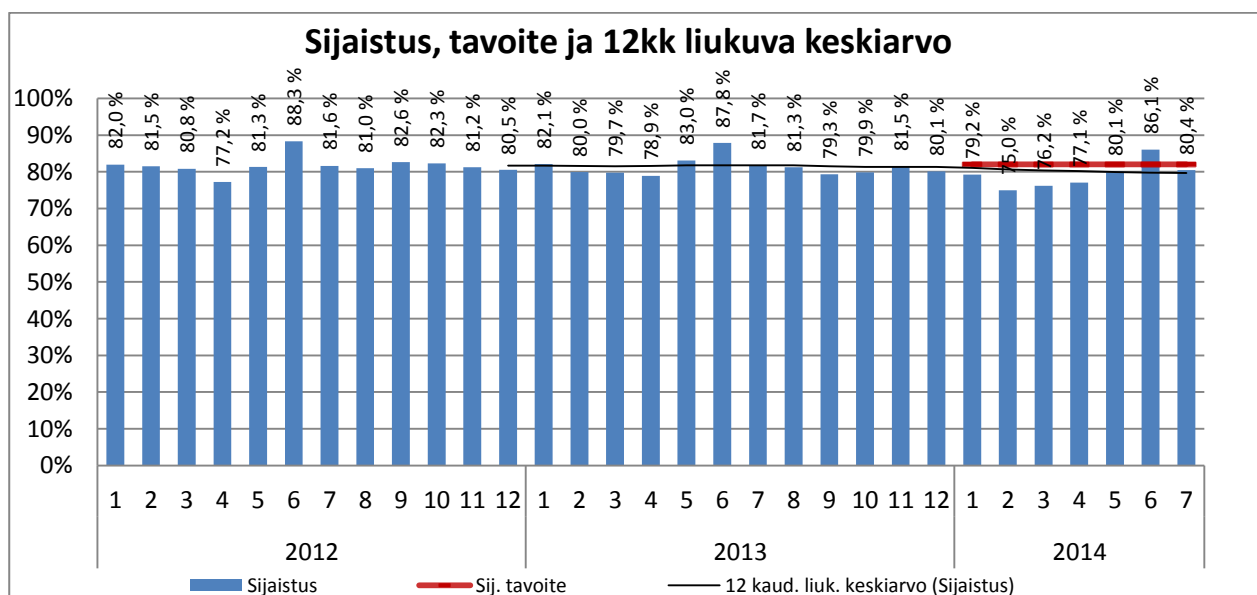
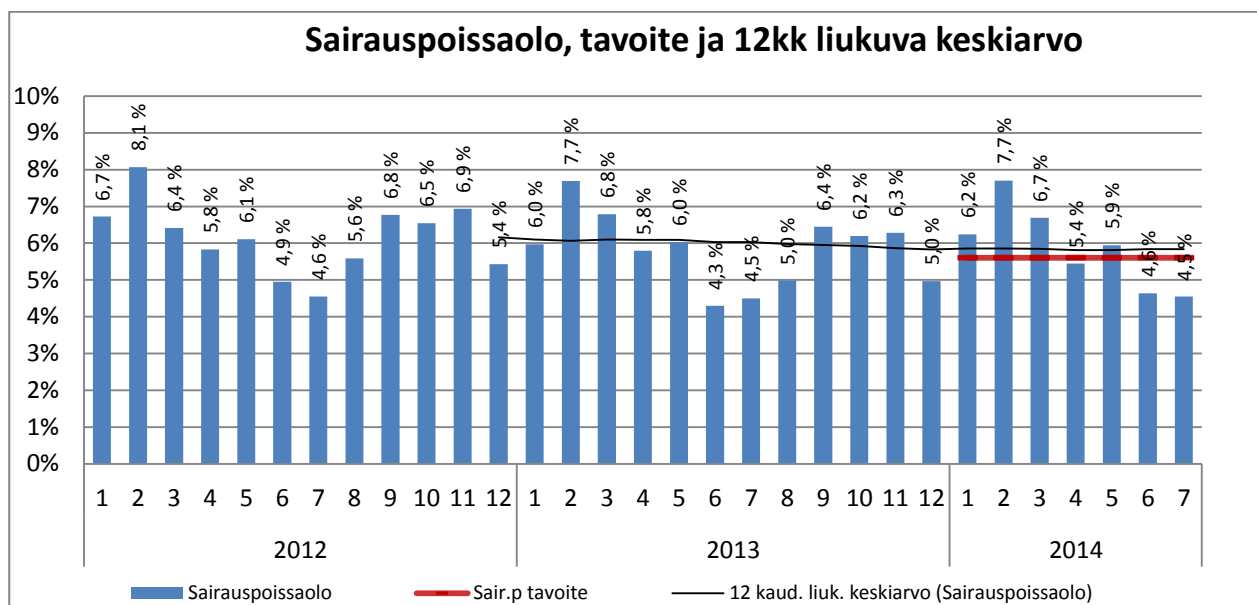
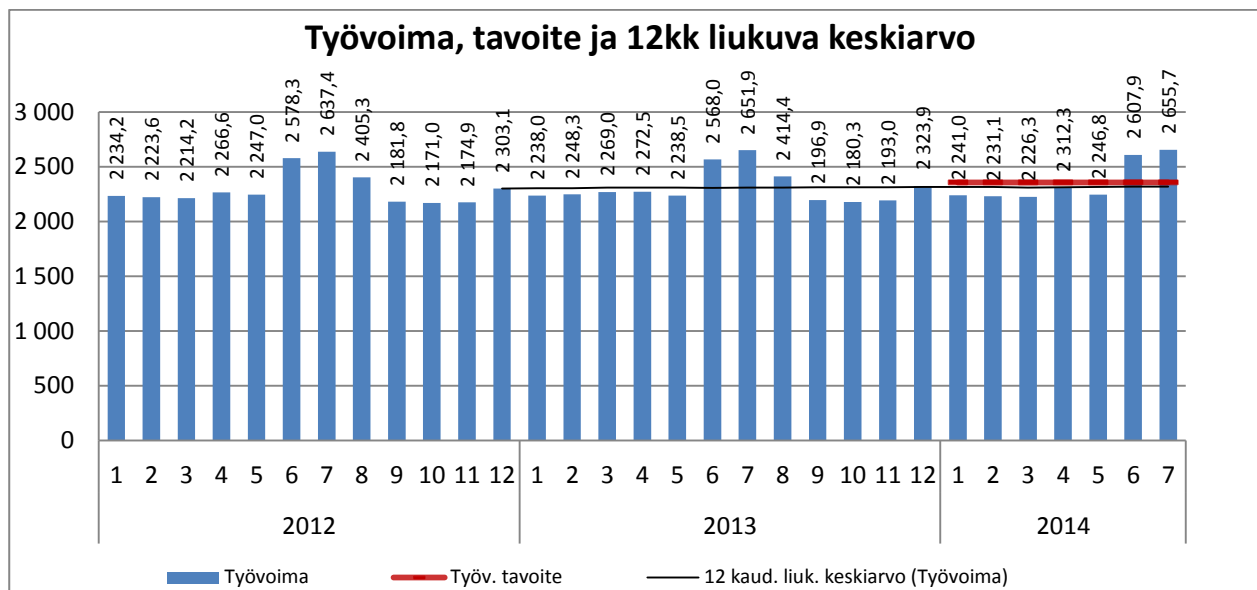
Vammaisten ja pitkäaikaissairaiden lasten omaishoidontuen asiakkaat (poikkil.)



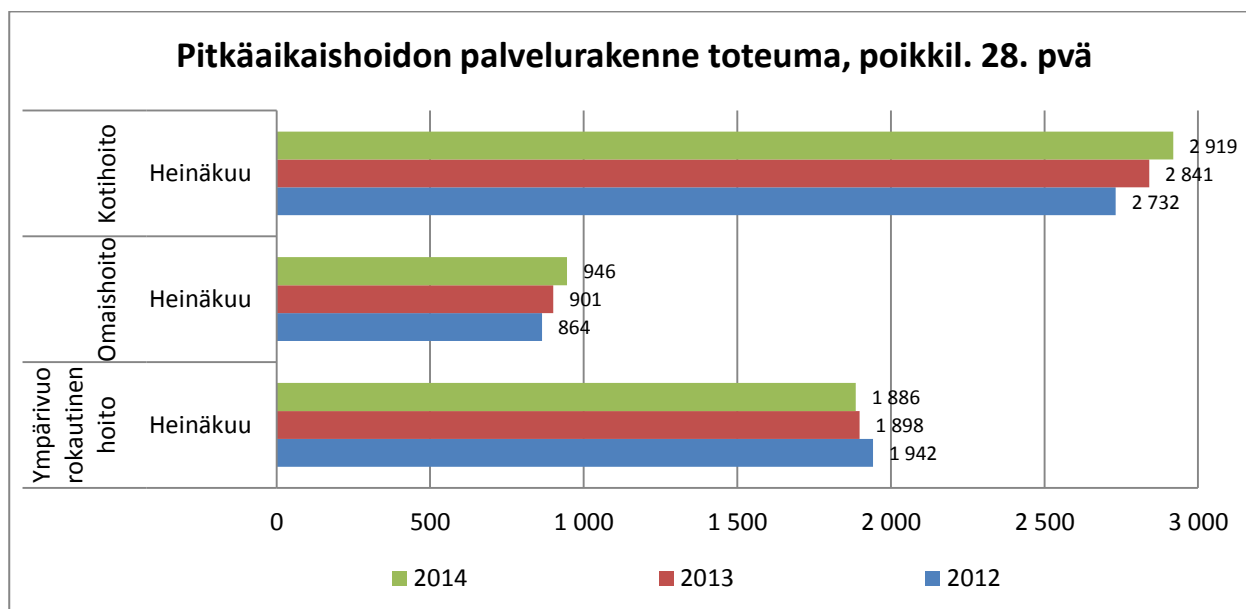
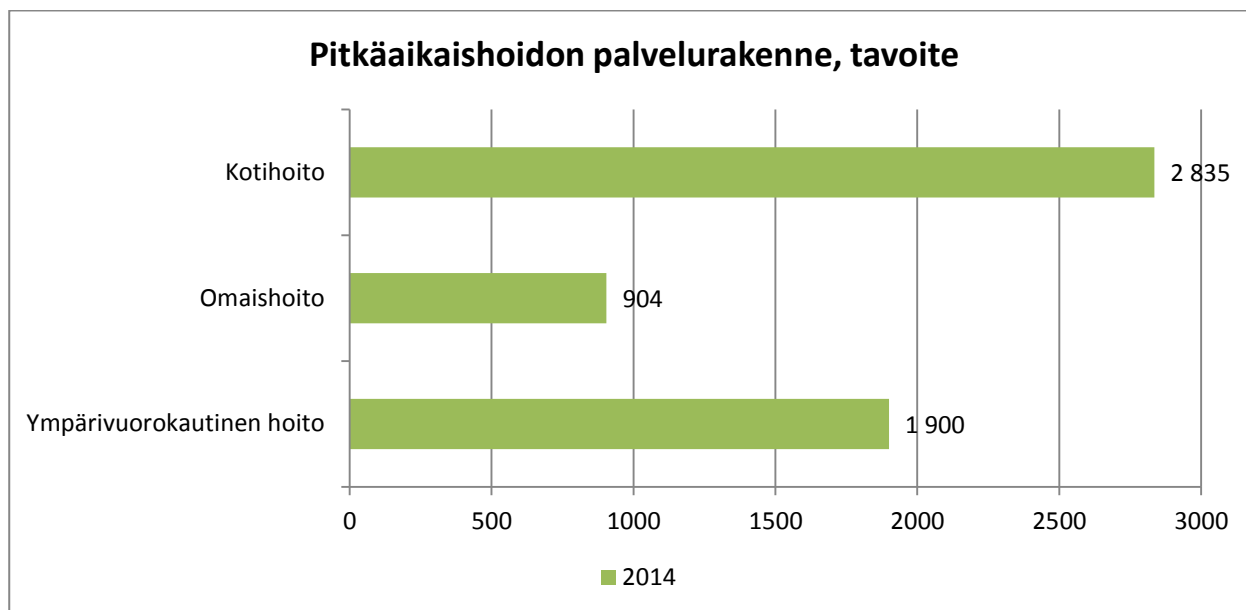
Kuljetuspalvelujen asiakkaat (kumulat.)

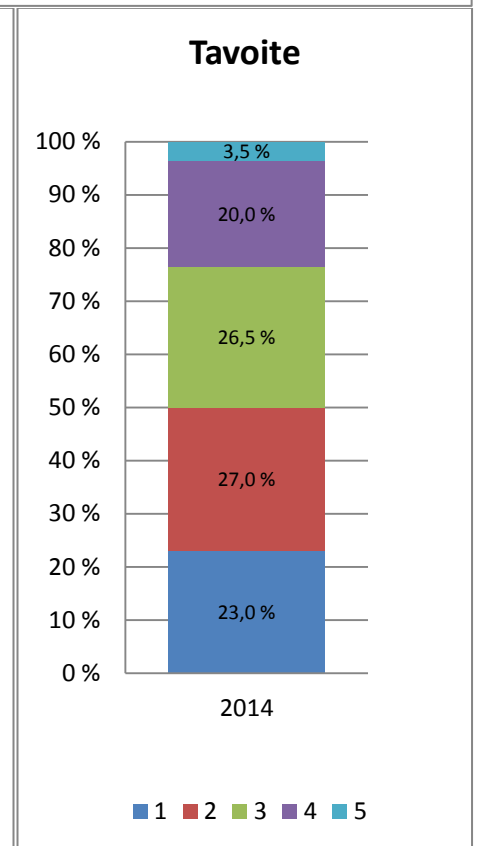
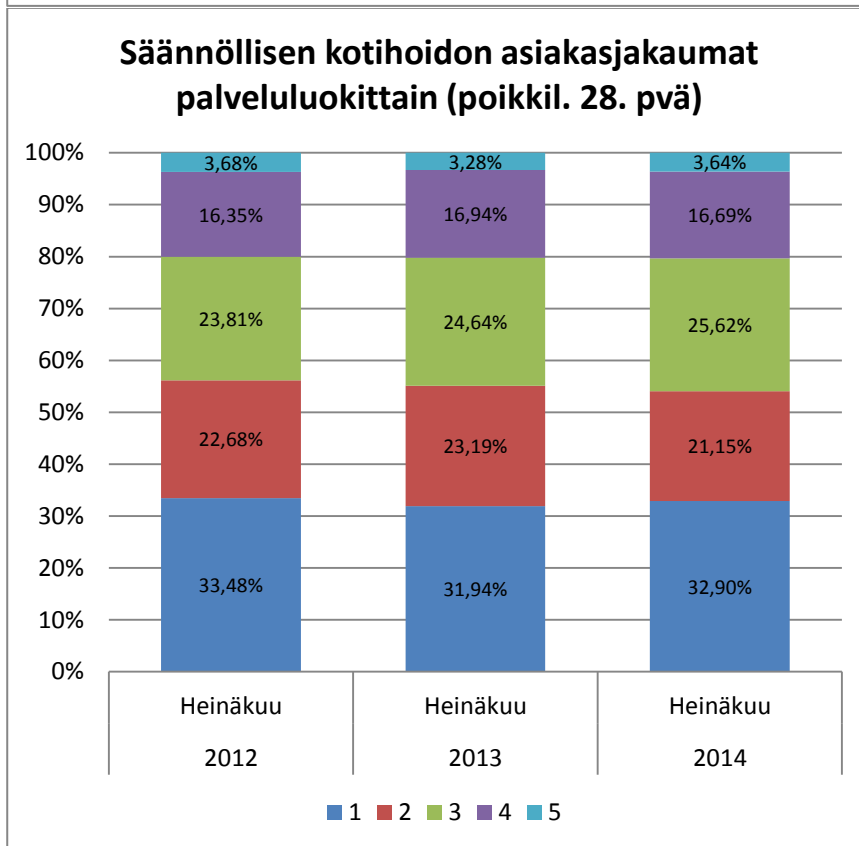
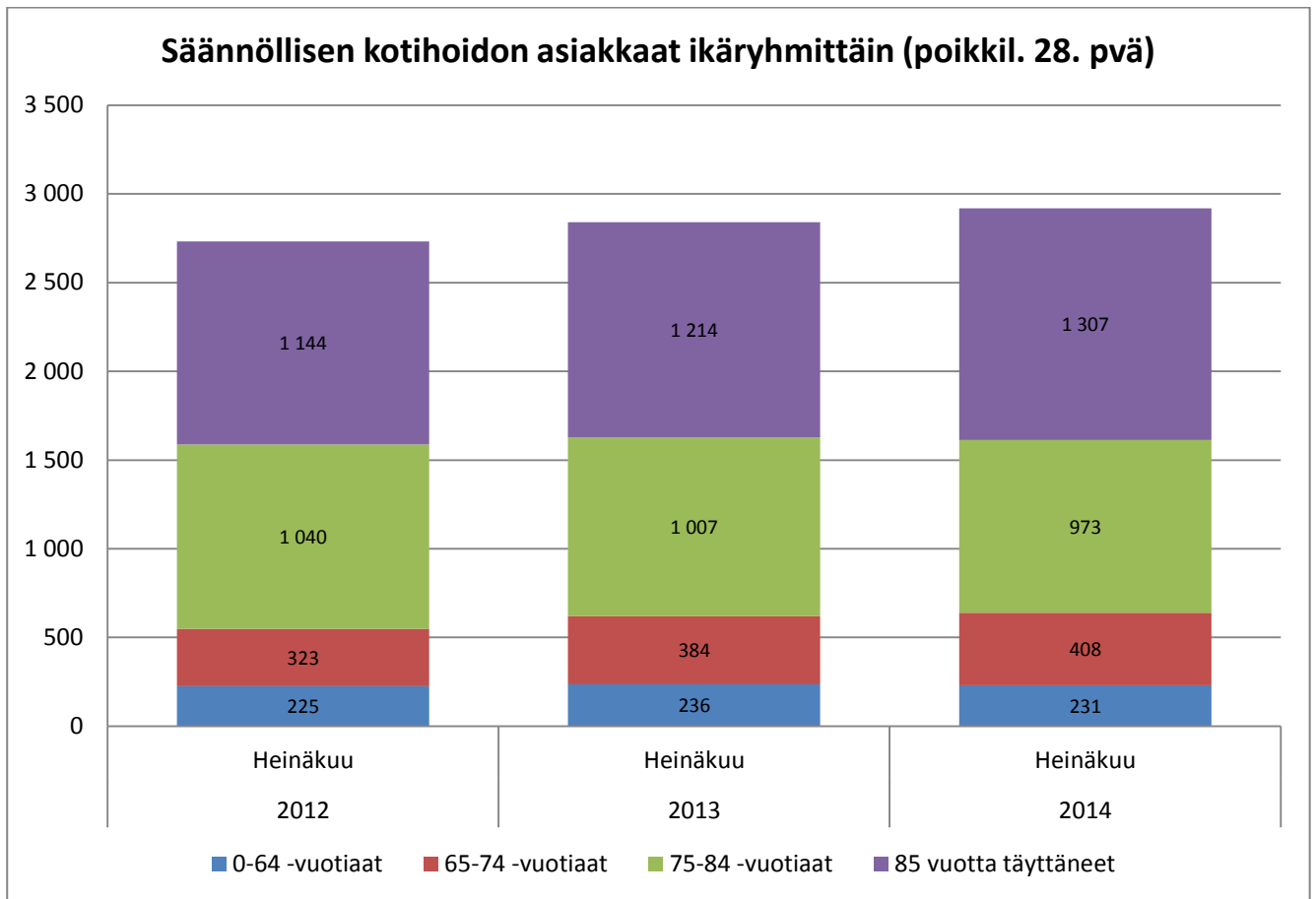


VANHUSPALVELUT

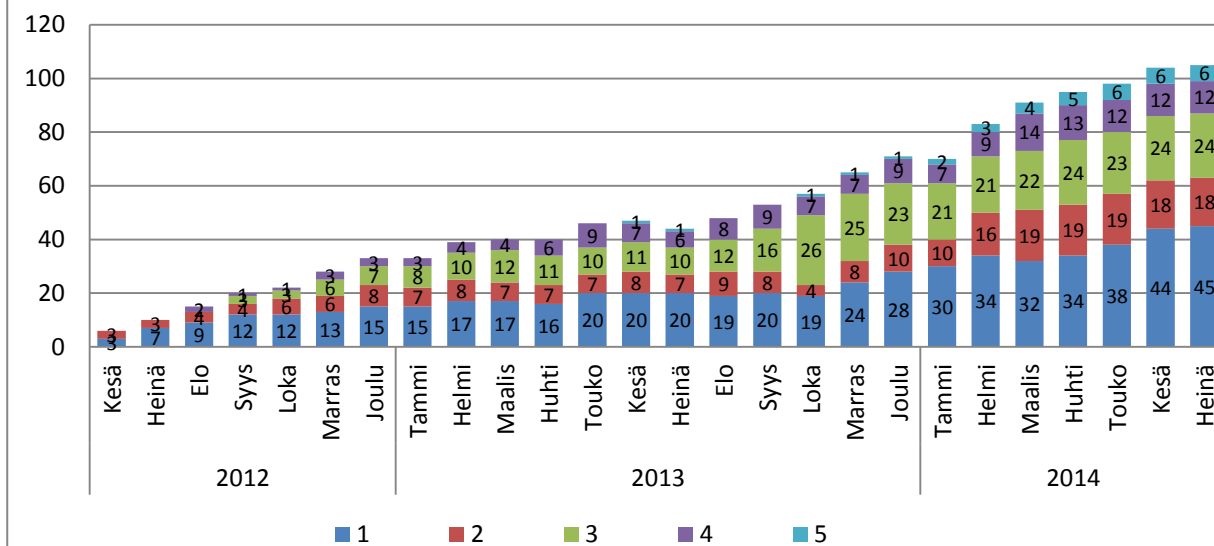


Toiminta

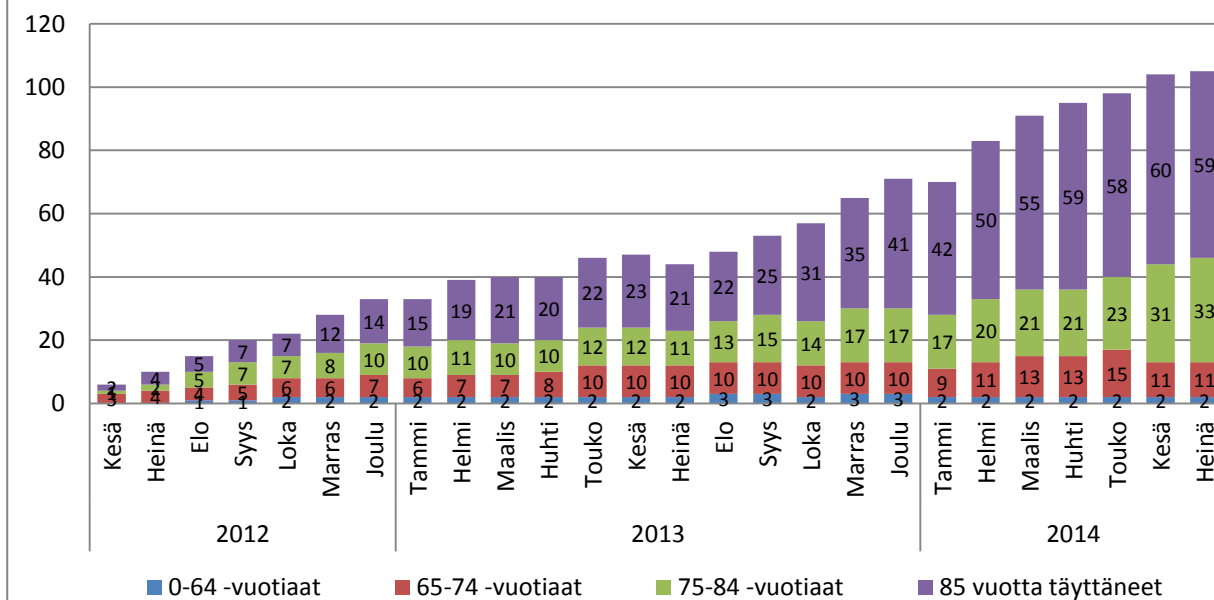


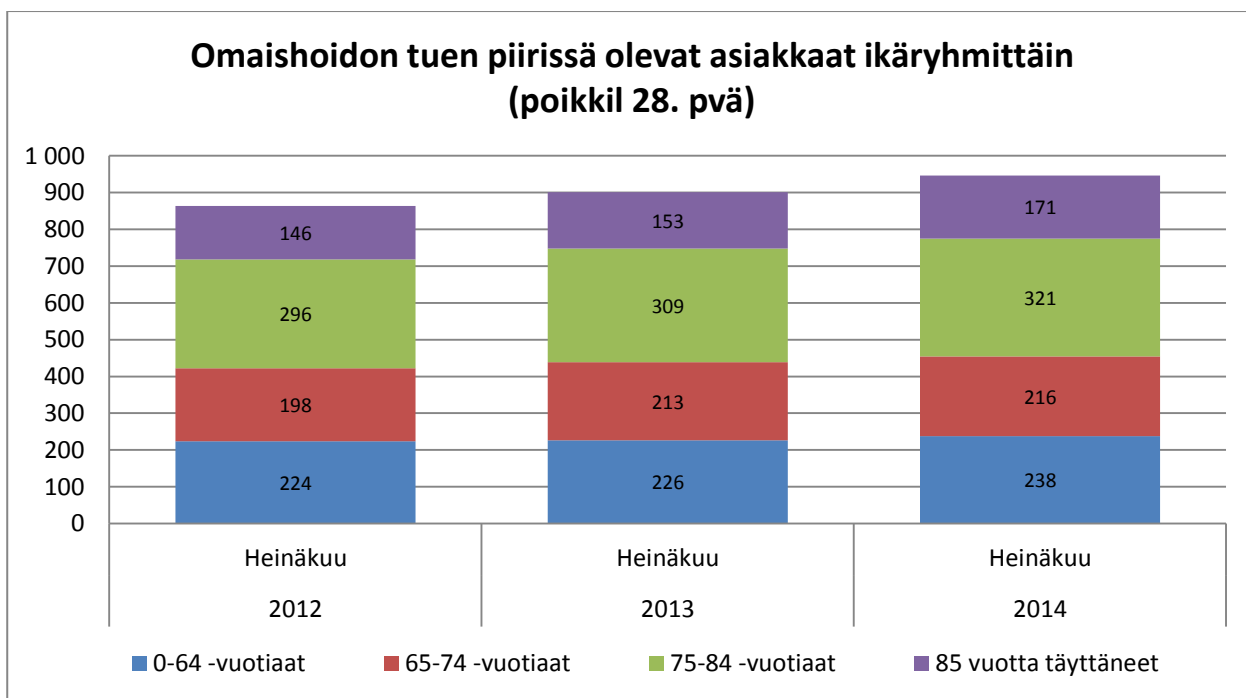
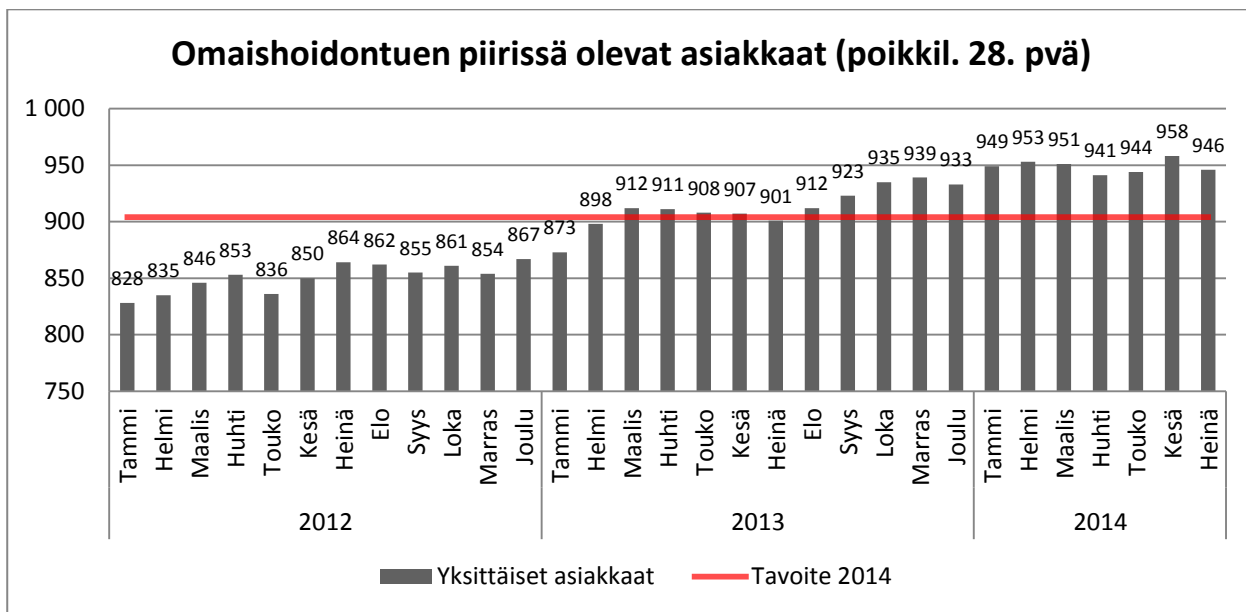


Palveluseteliasiakkaat palveluluokittain (poikkil. 28. pvä)

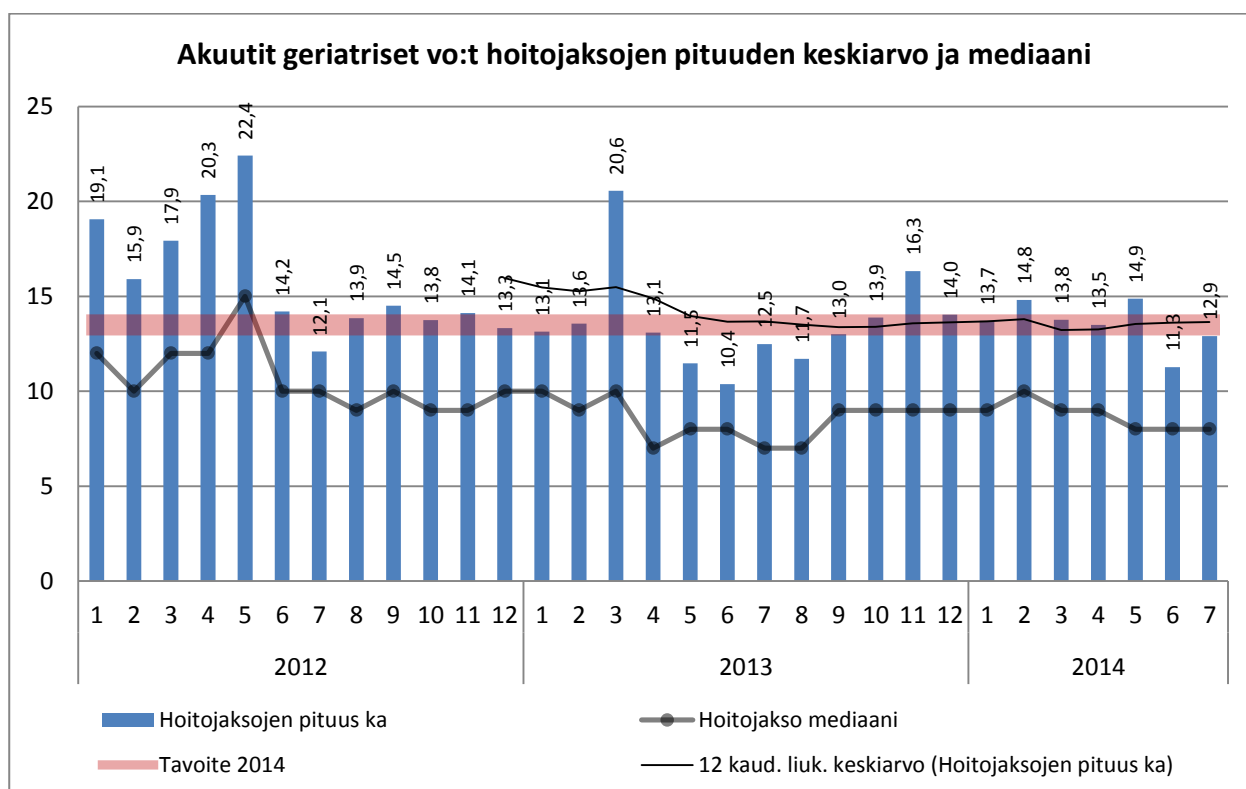
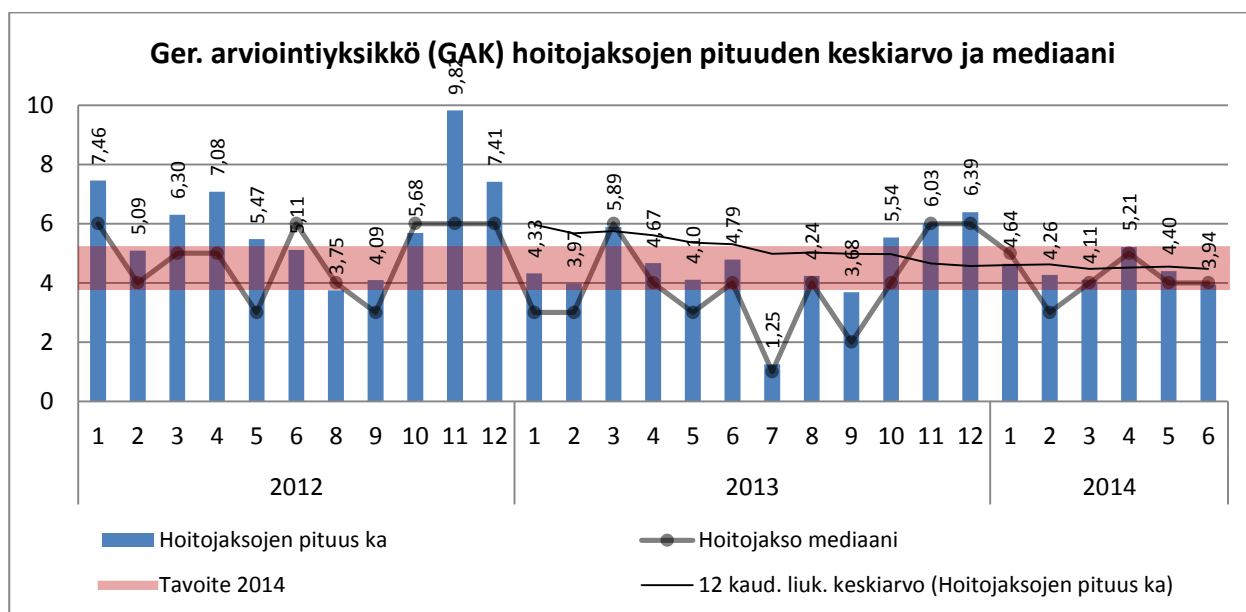


Palveluseteliasiakkaat ikäryhmittäin (poikkil. 28. pvä)





Geriatrinen sairaalahoito



Ympäri vuorokautinen hoito

