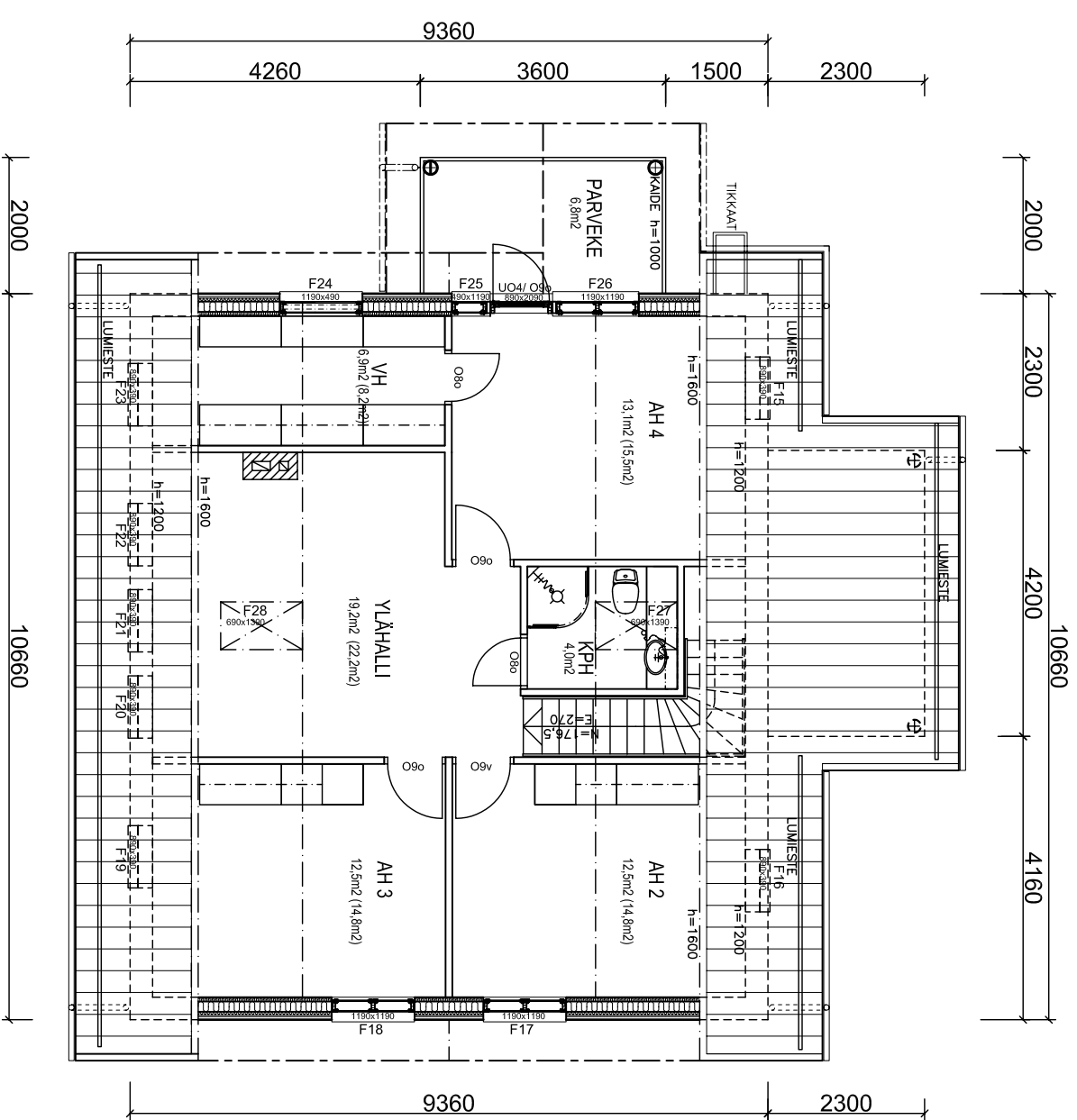


## 1.KERROS

KOKONAISALA	100,0 m <sup>2</sup>	+100,0 m <sup>2</sup>	=	200,0 m <sup>2</sup>
KERROSALA	100,0 m <sup>2</sup>	+75,0 m <sup>2</sup>	=	175,0 m <sup>2</sup>
KERROSALA (250mm)	96,5 m <sup>2</sup>	+74,5 m <sup>2</sup>	=	171,0 m <sup>2</sup>
HUONEISTOALA (6H+K)	81,0m <sup>2</sup>	+74,0m <sup>2</sup>	=	155,0 m <sup>2</sup>
TILAVUUS	620 m <sup>3</sup>			
LÄMMIN TILAVUUS	450 m <sup>3</sup>			



## 2.KERROS

HORMIT 1:20

