

TURKU



HYVINVOINTITOIMIALA

# Kuukausiseuranta

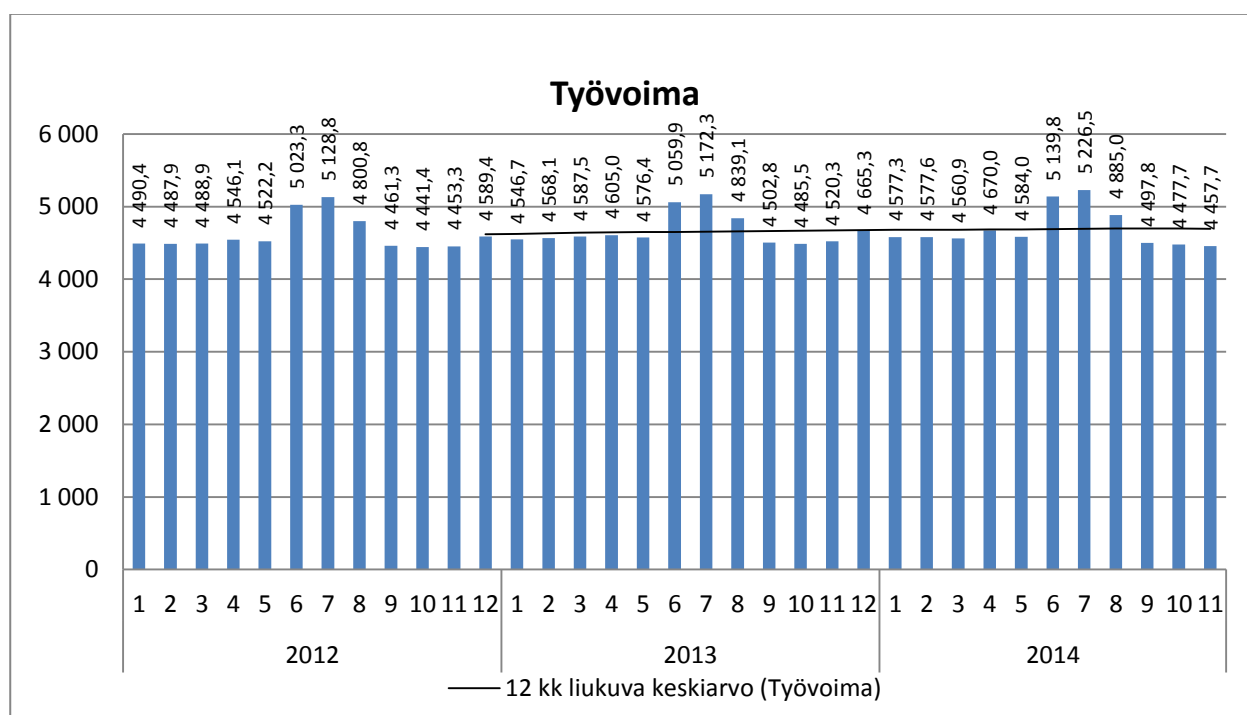
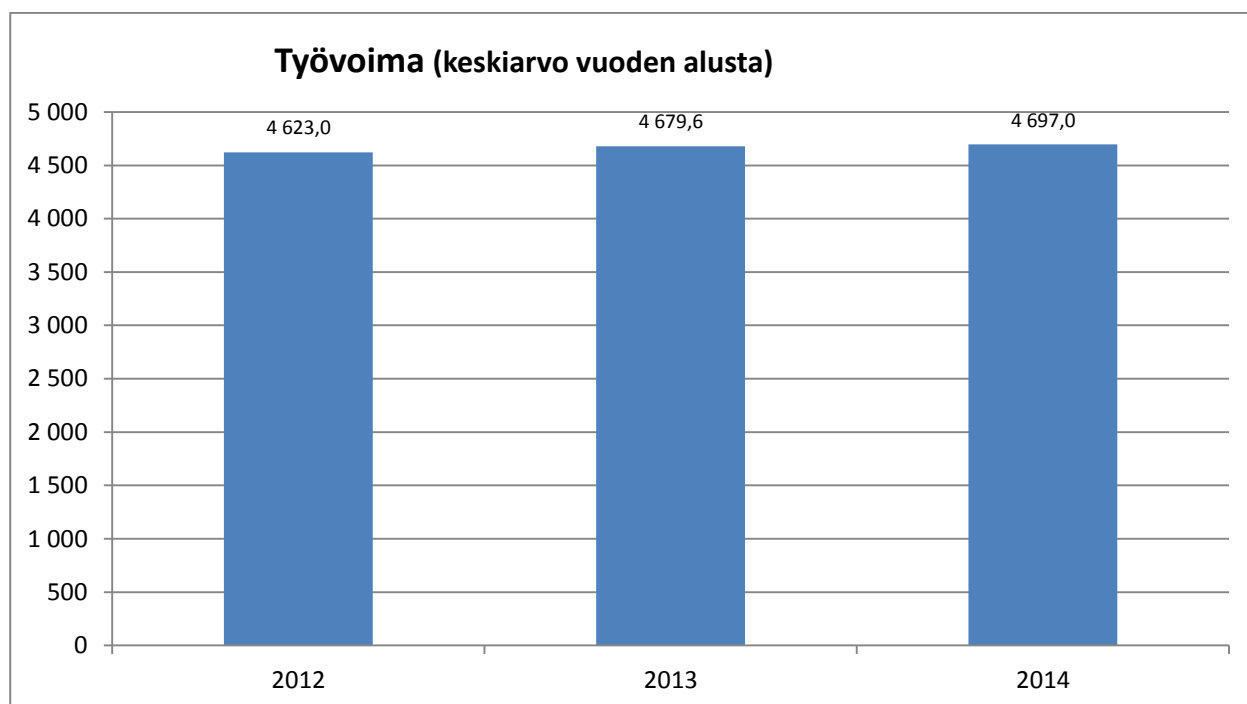
---

*Marraskuu*

11.12.2014

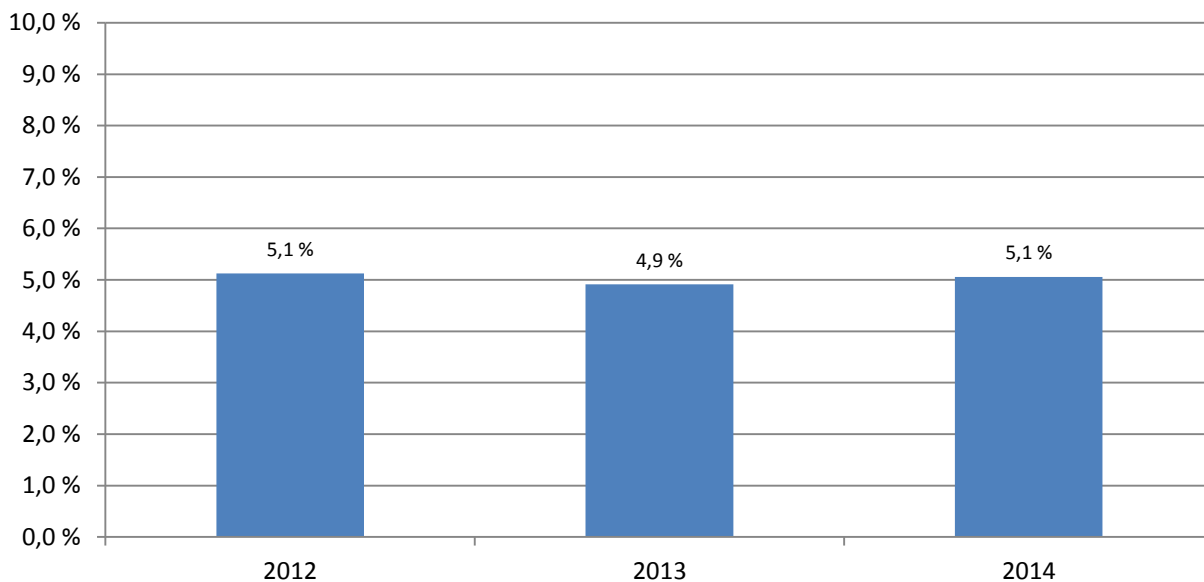
---

## HYVINVOINTITOIMIALA

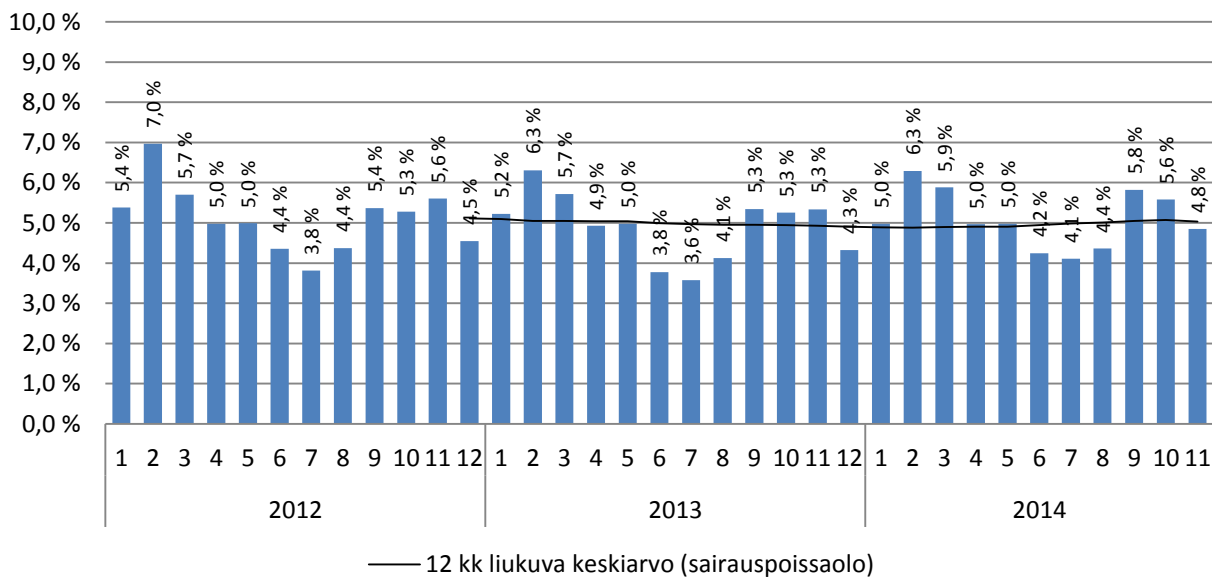


Huom! Vuoden 2012 organisaatiosta poistettu työterveyshuolto ja ympäristöterveydenhuolto. Keskiarvo vuoden alusta näyttää vertailun vastaavaan ajankohtaan muina vuosina. Henkilöstötiedot päivitetty 9.12.2014.

## Sairauspoissaolo keskiarvo vuoden alusta

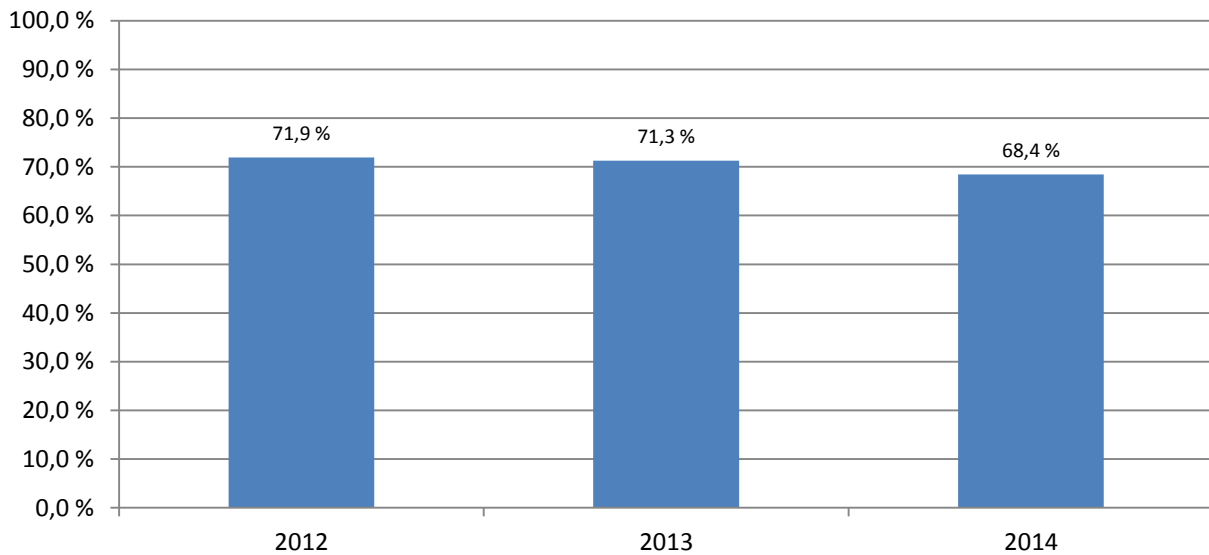


## Sairauspoissaolo-%

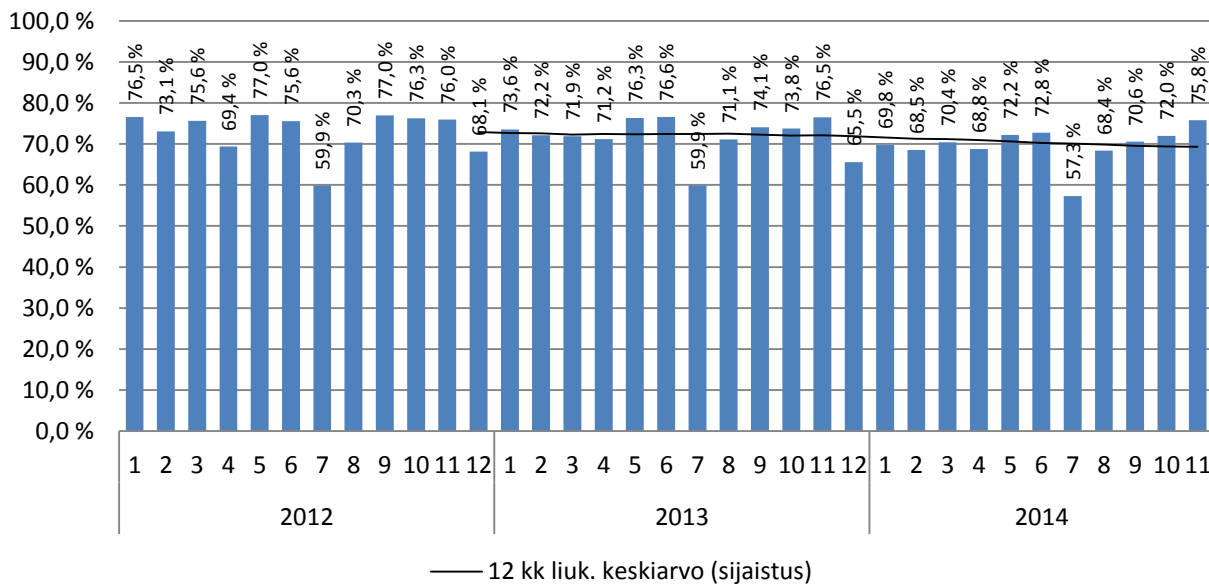


Huom! Vuoden 2012 organisaatiosta poistettu työterveyshuolto ja ympäristöterveydenhuolto.  
Keskiarvo vuoden alusta näyttää vertailun vastaavaan ajankohtaan muina vuosina.  
Henkilöstötiedot päivitetty 9.12.2014.

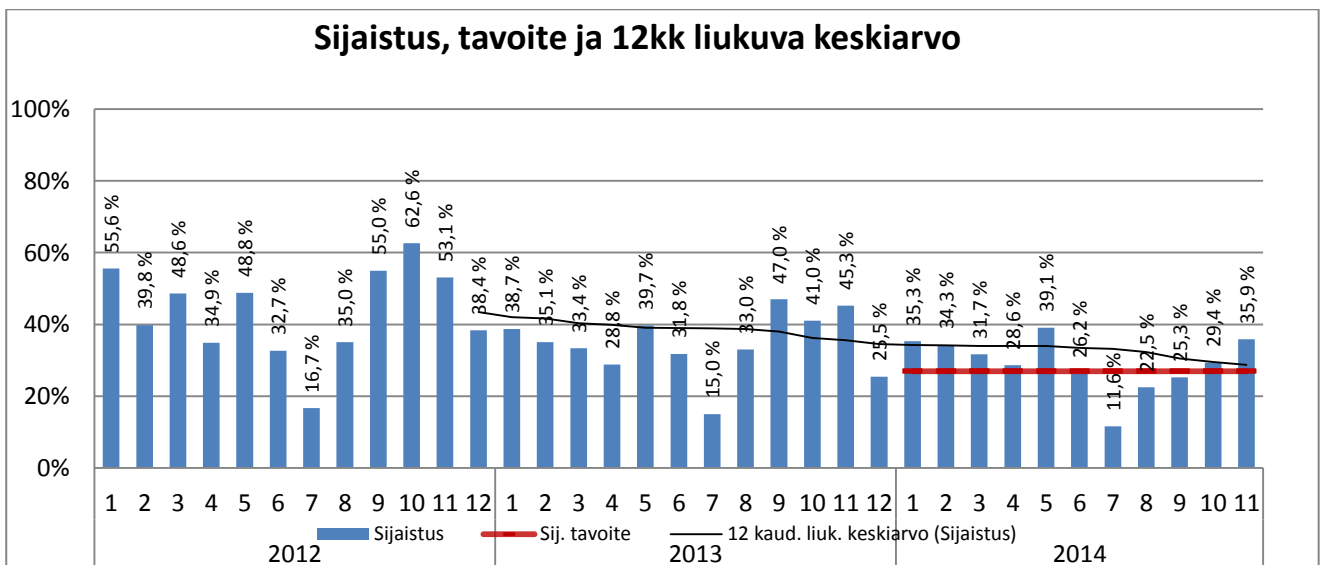
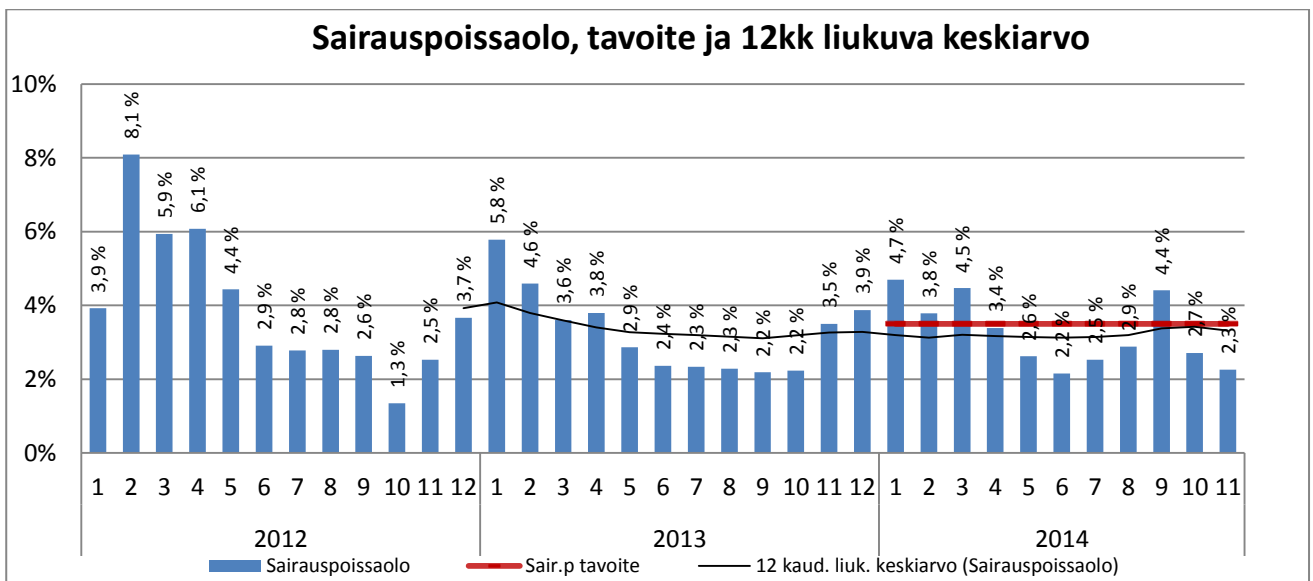
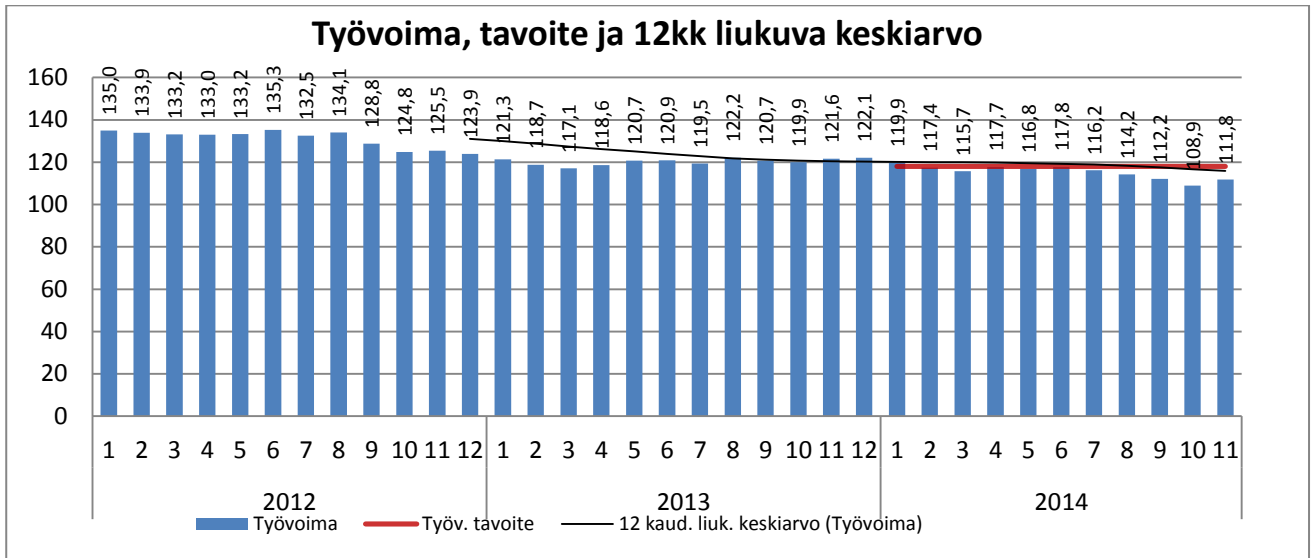
### Sijaistus-% keskiarvo vuoden alusta



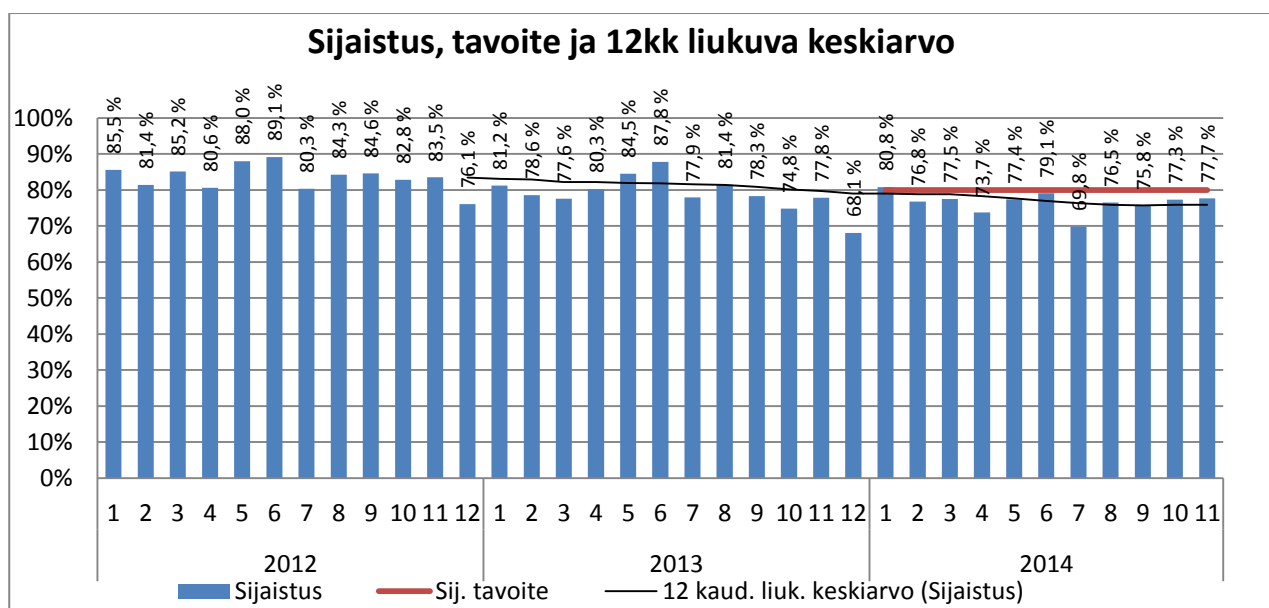
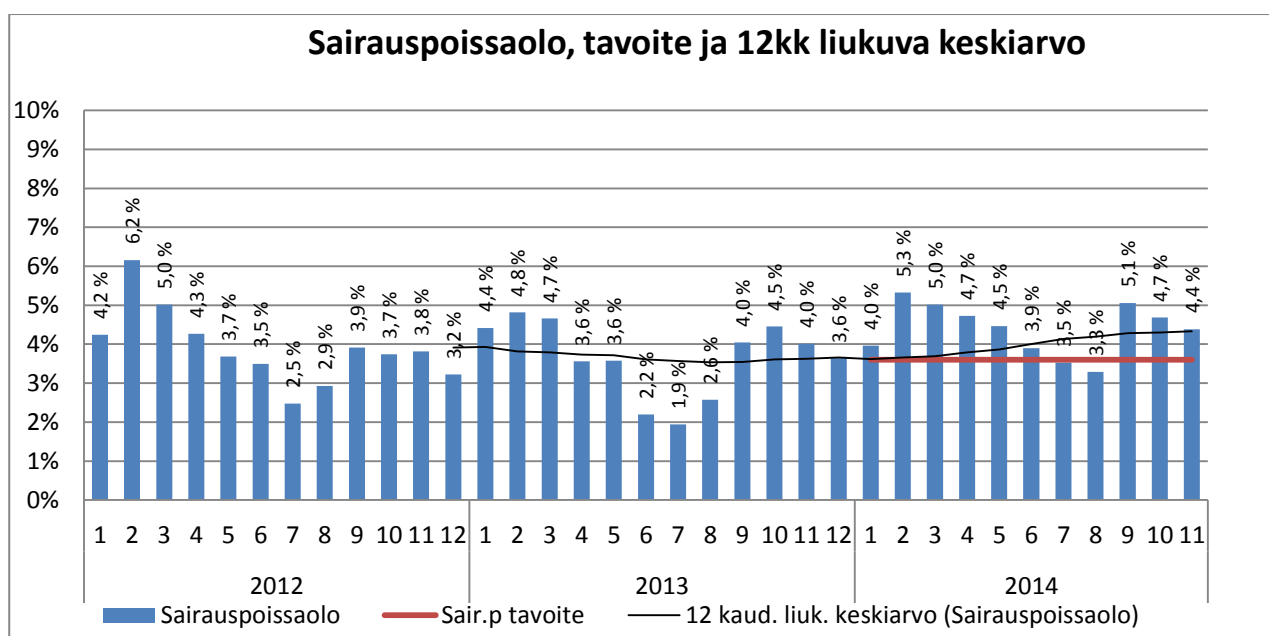
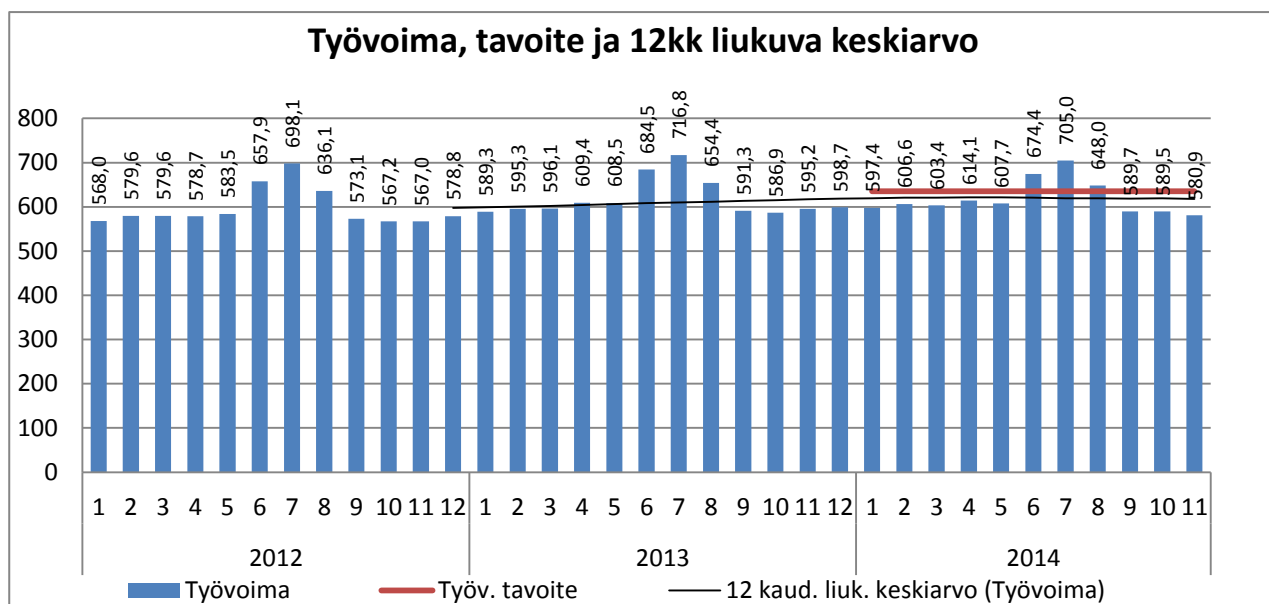
### Sijaistus-% kuukausittain



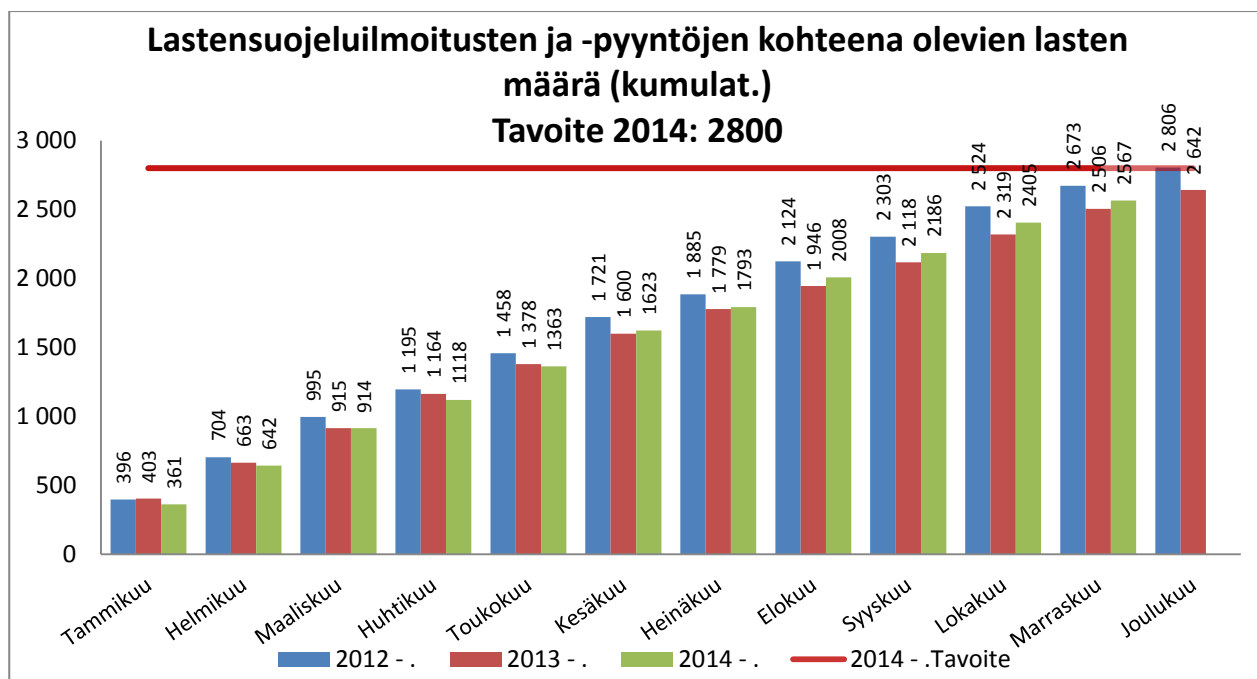
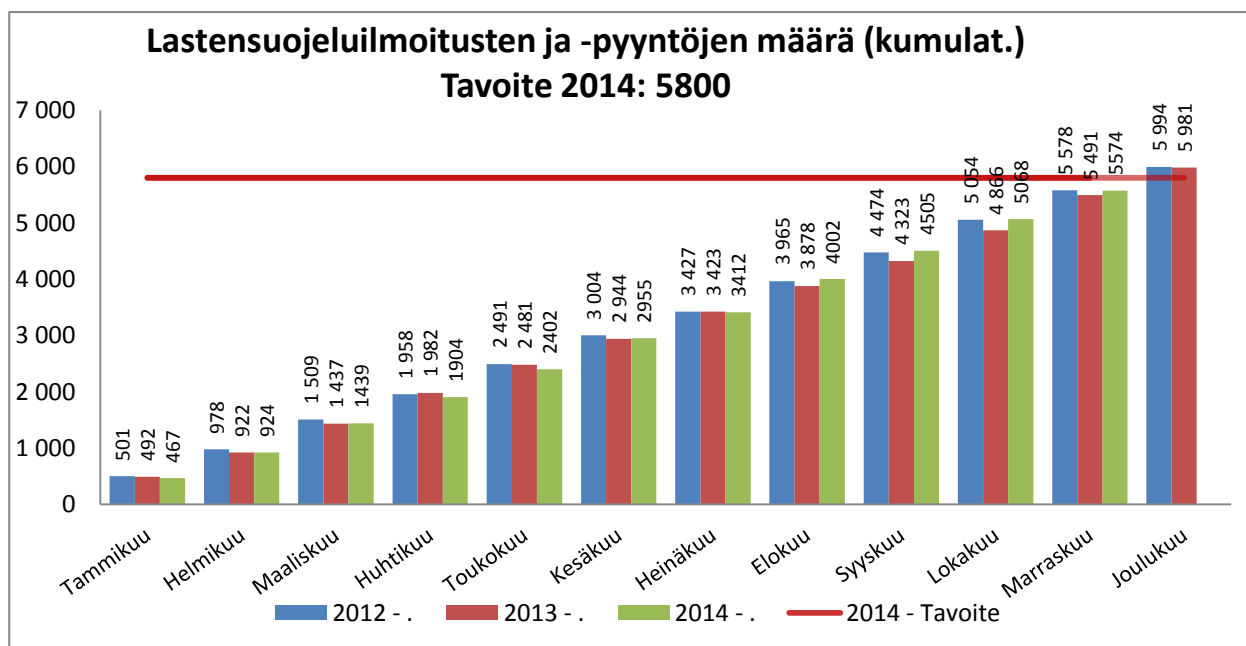
Huom! Vuoden 2012 organisaatiosta poistettu työterveyshuolto ja ympäristöterveydenhuolto. Keskiarvo vuoden alusta näyttää vertailun vastaavaan ajankohtaan muina vuosina. Henkilöstötiedot päivitetty 9.12.2014.

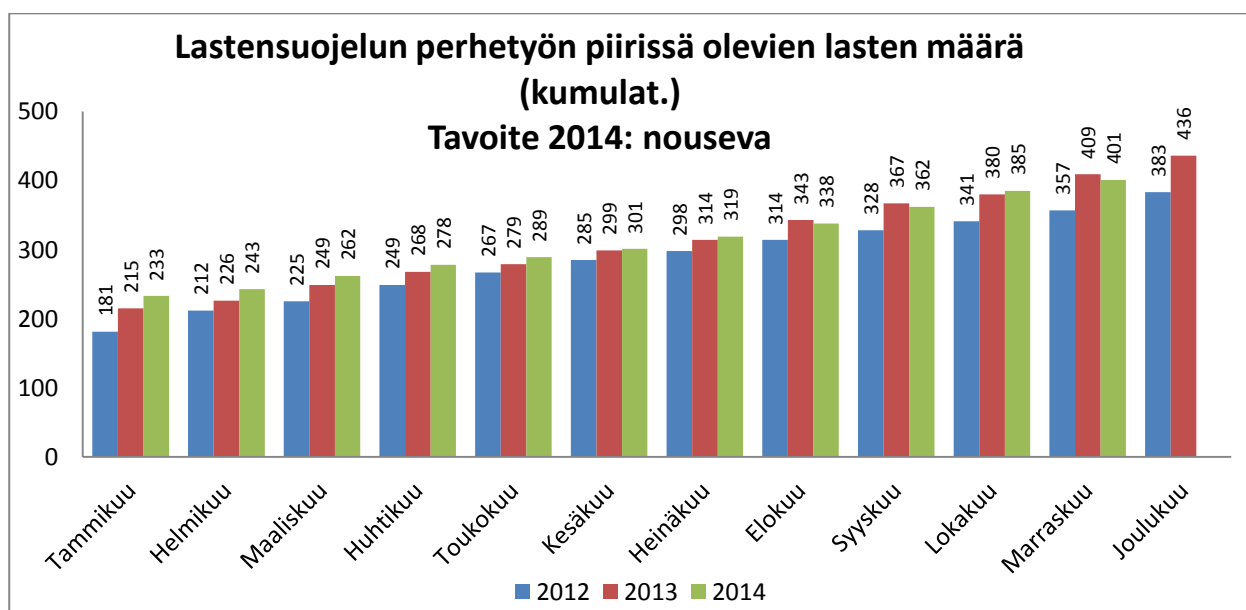
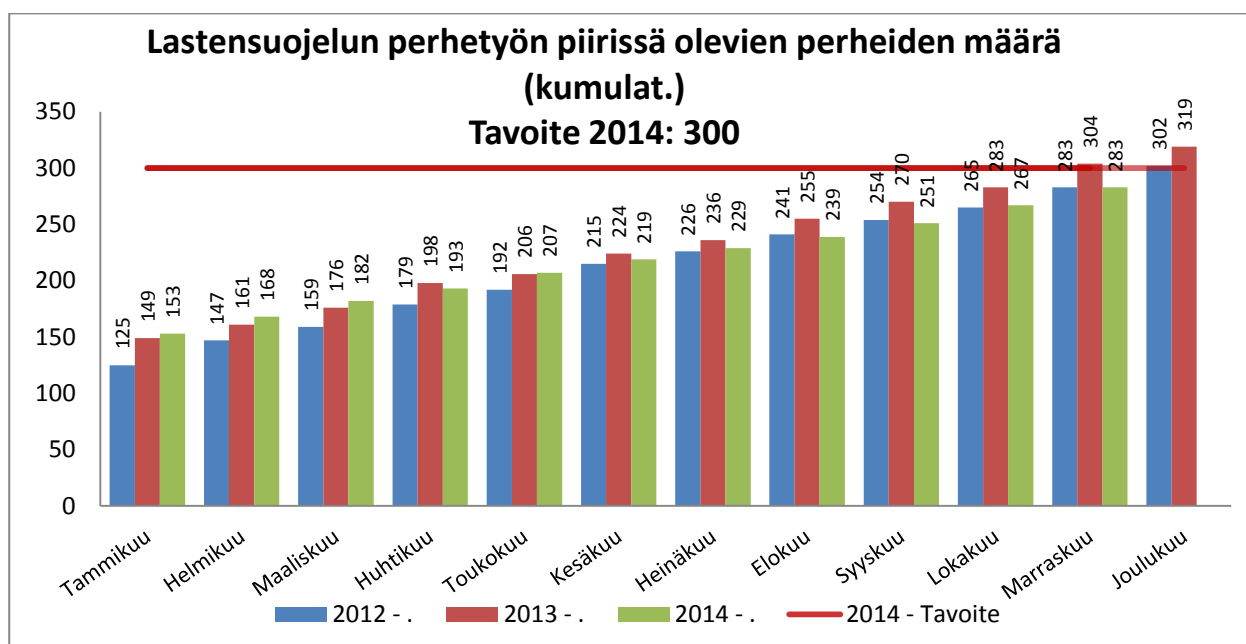
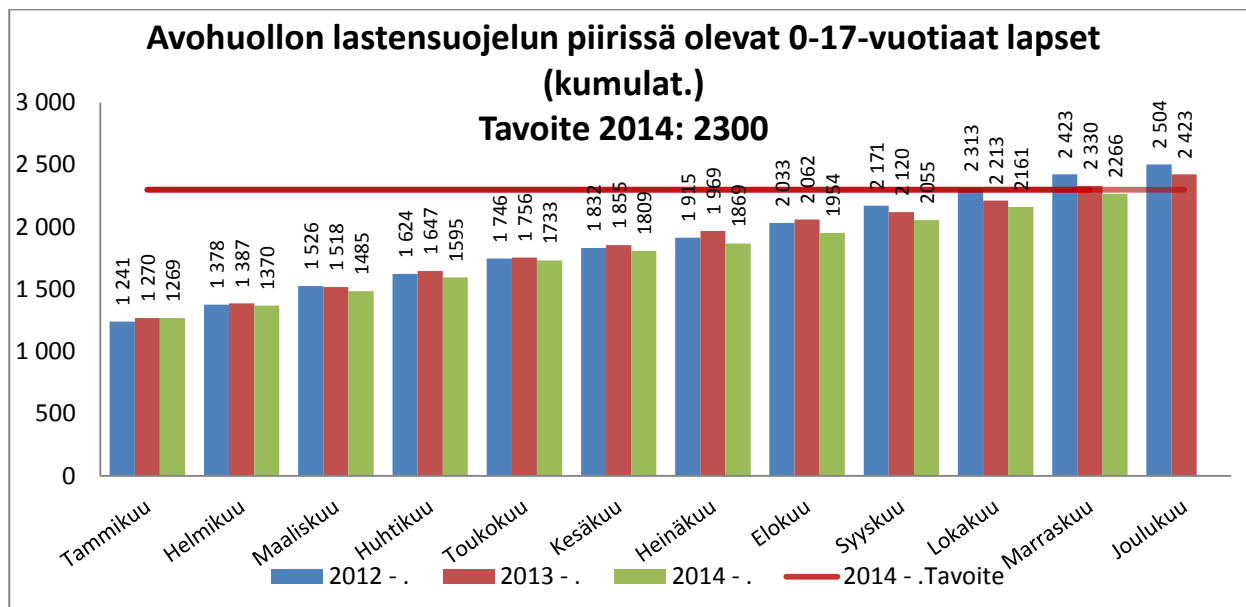


## SOSIAALITYÖ

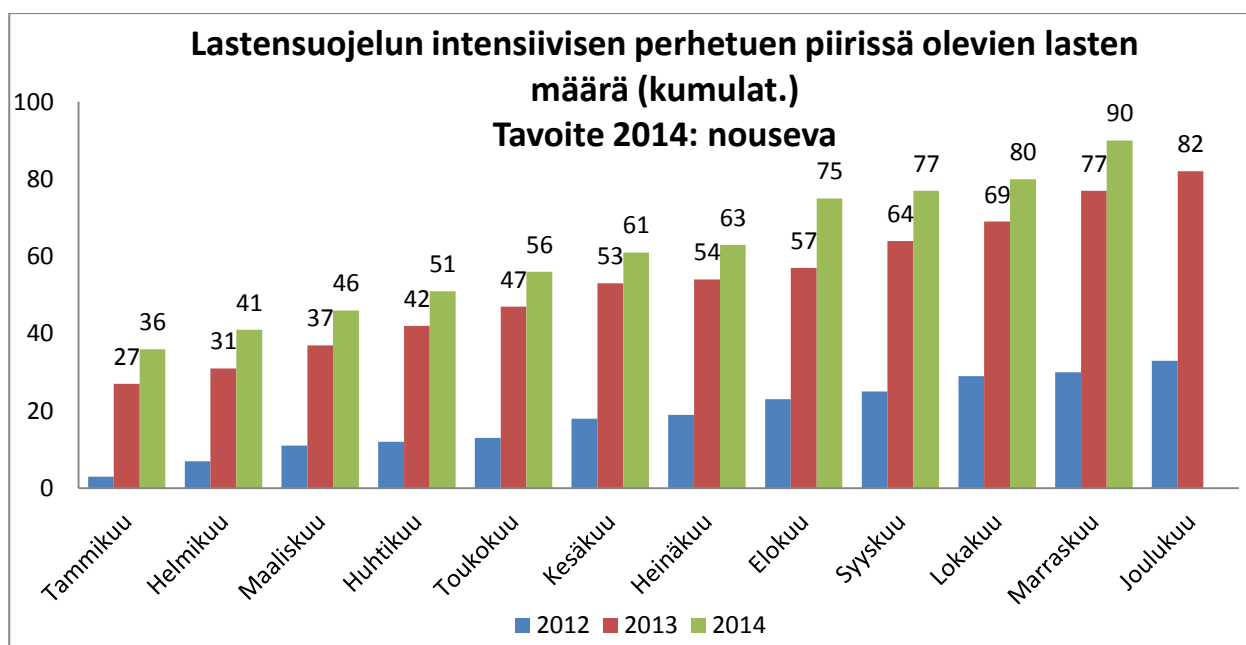
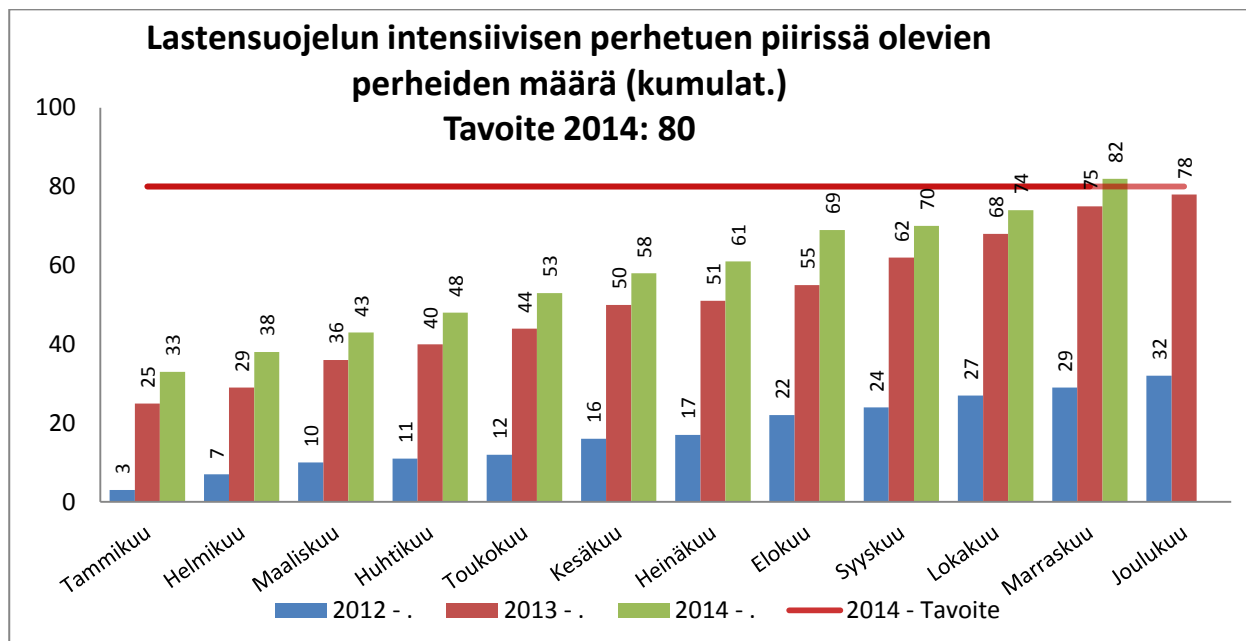


## Avohuollon sosiaalityö



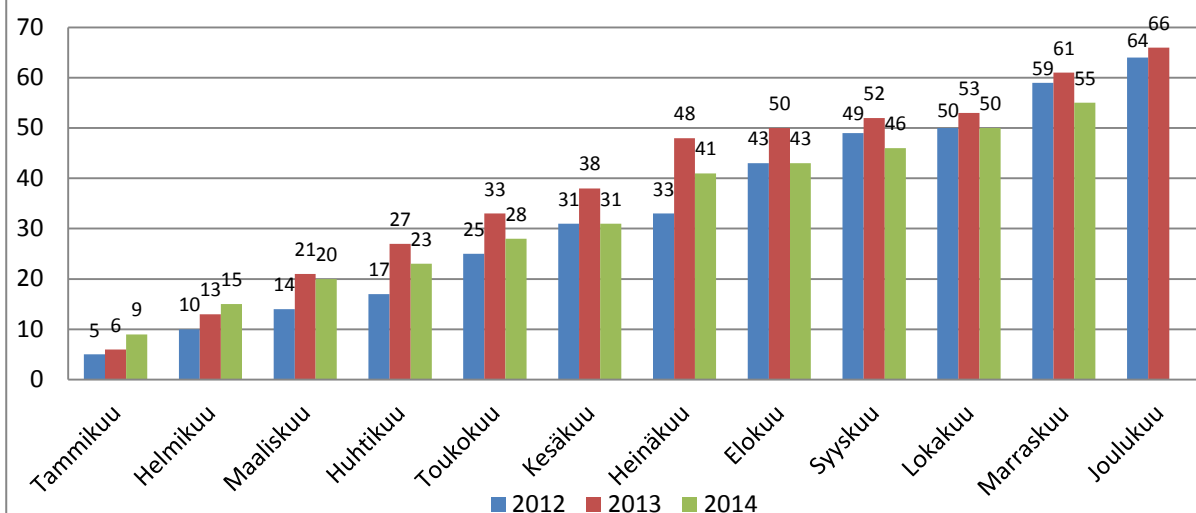




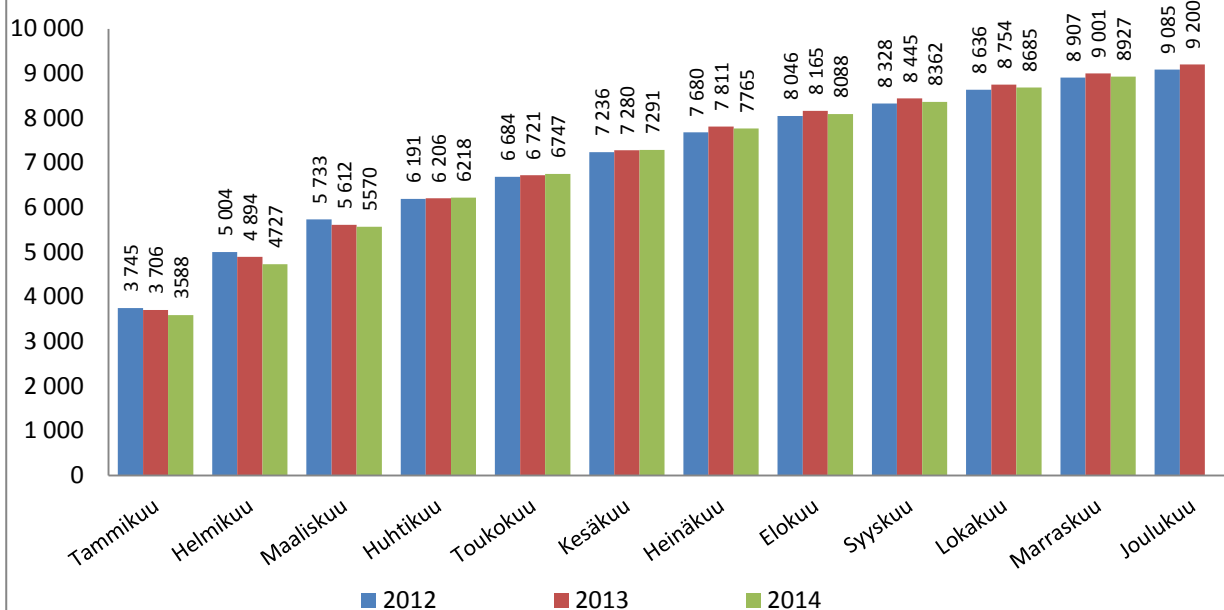


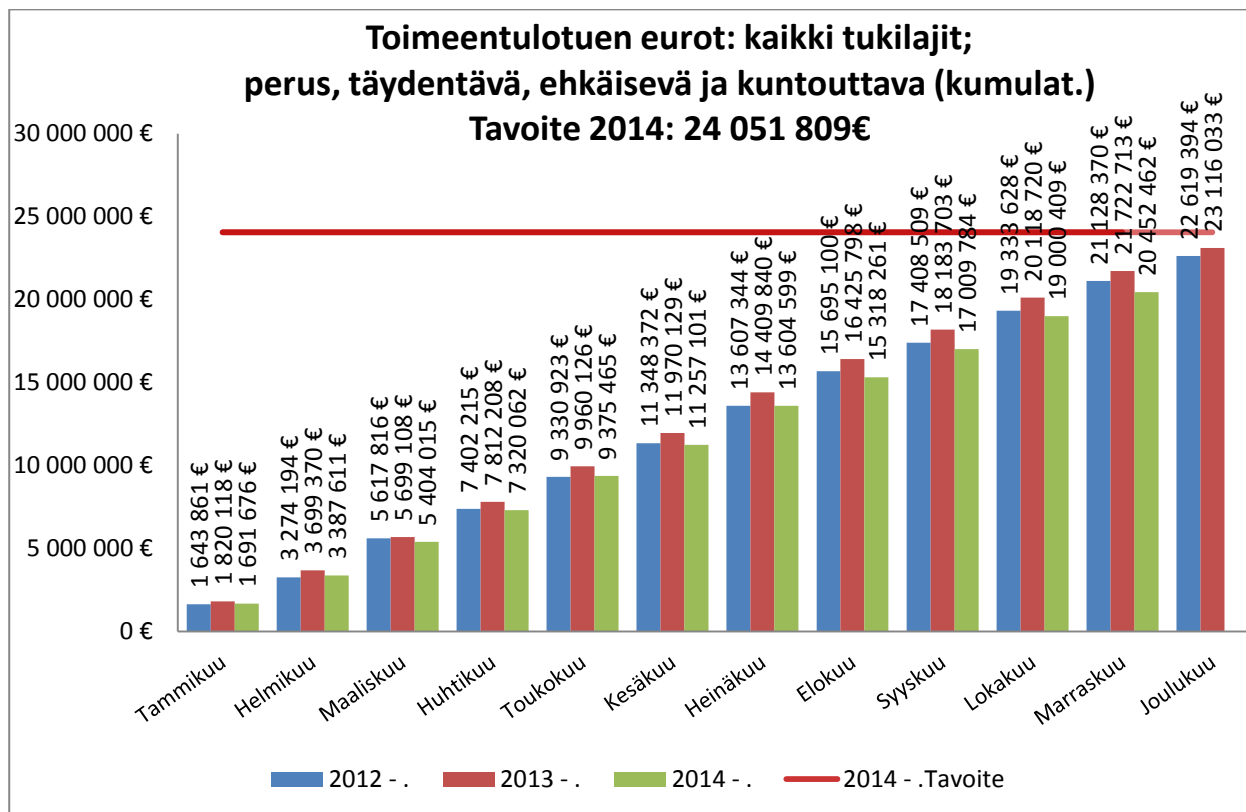
## Uusien huostaanotettujen lasten määrä (kumulat.)

Tavoite 2014: laskeva

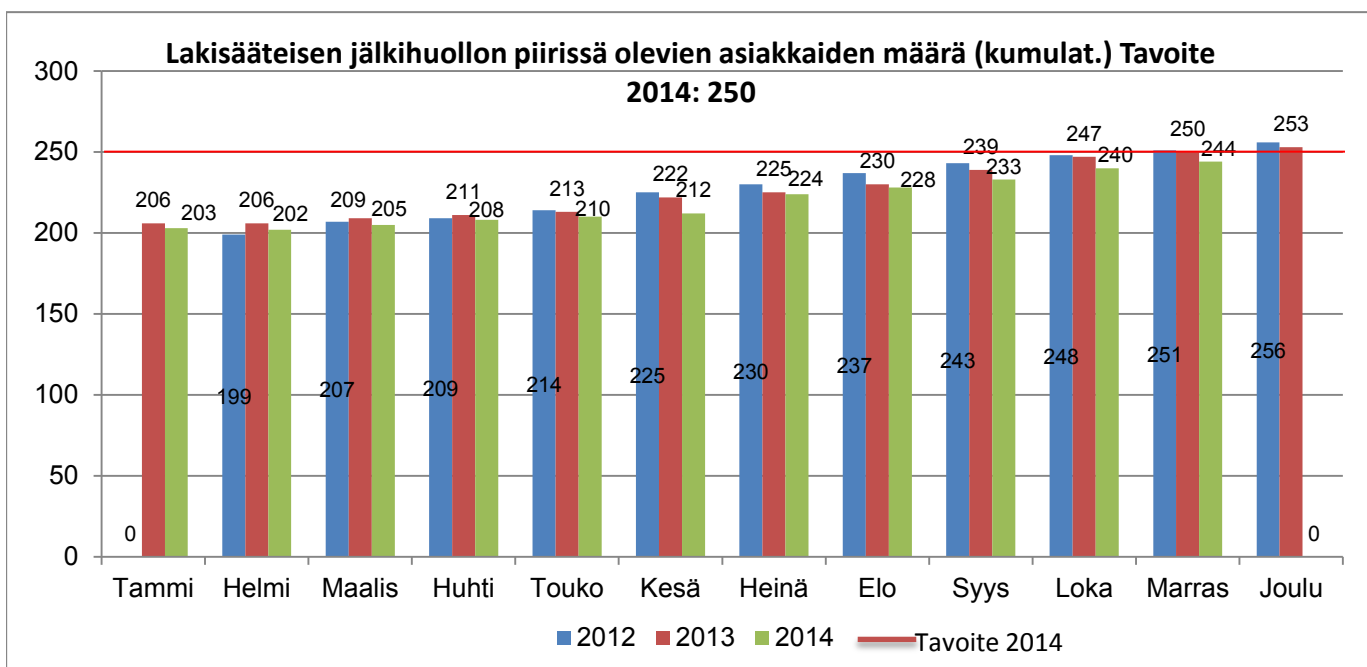
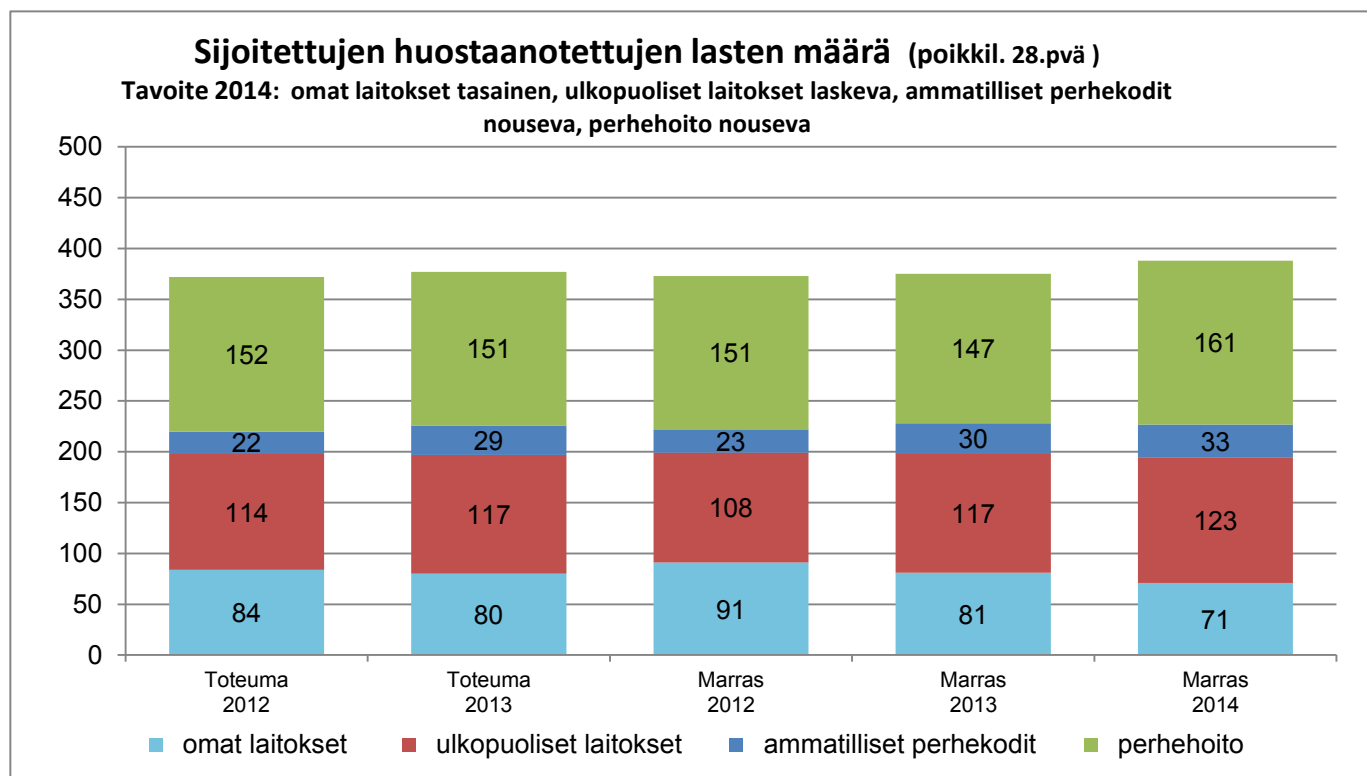


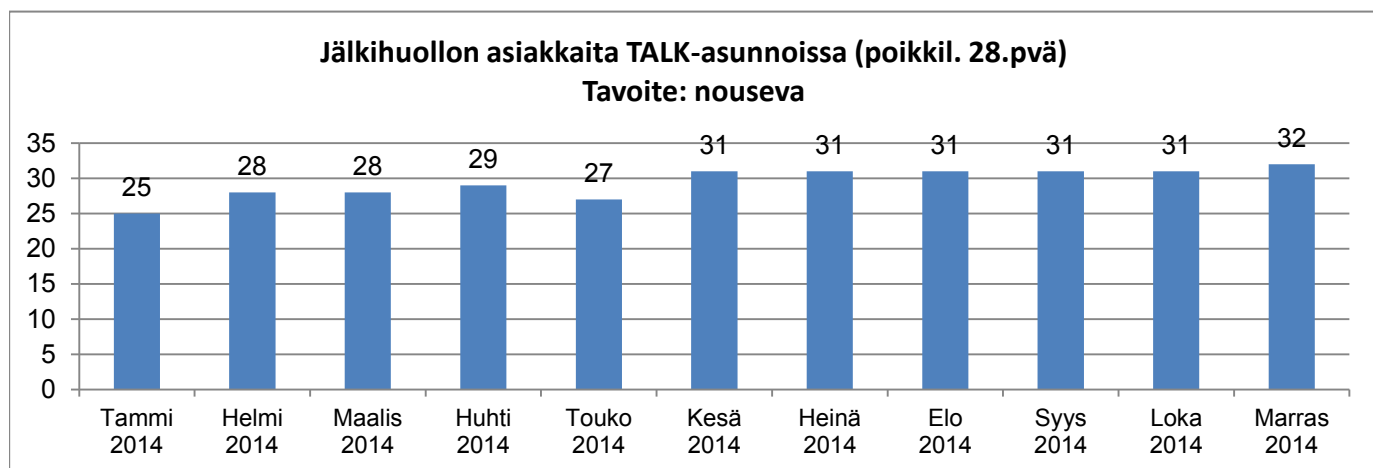
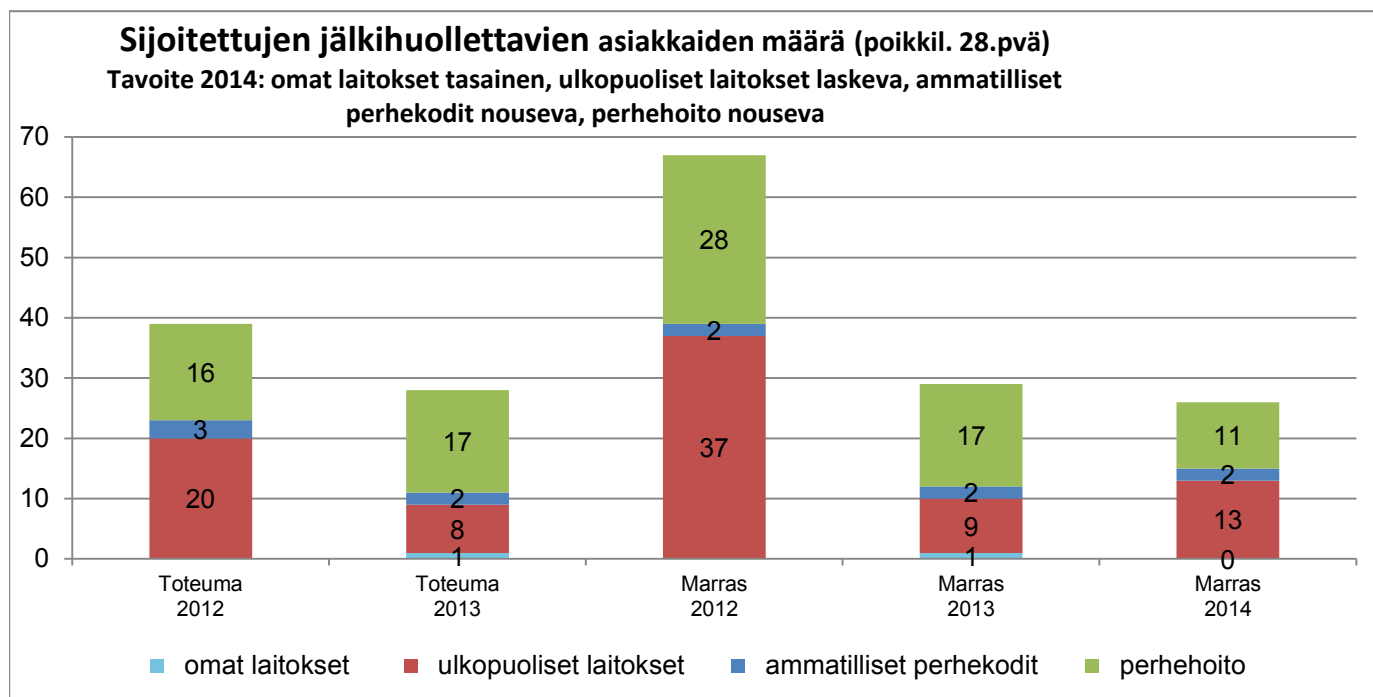
## Toimentulotukea saavien kotitalouksien määrä (kumulat.)



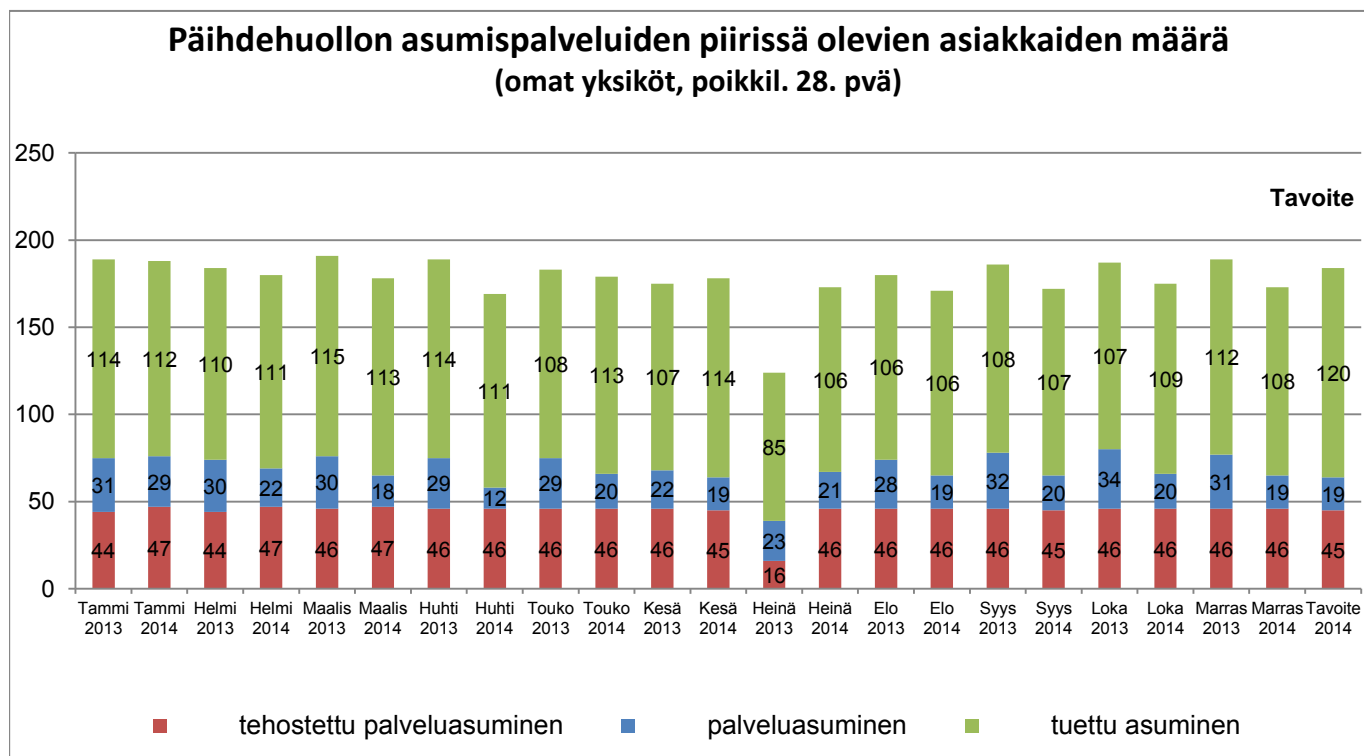
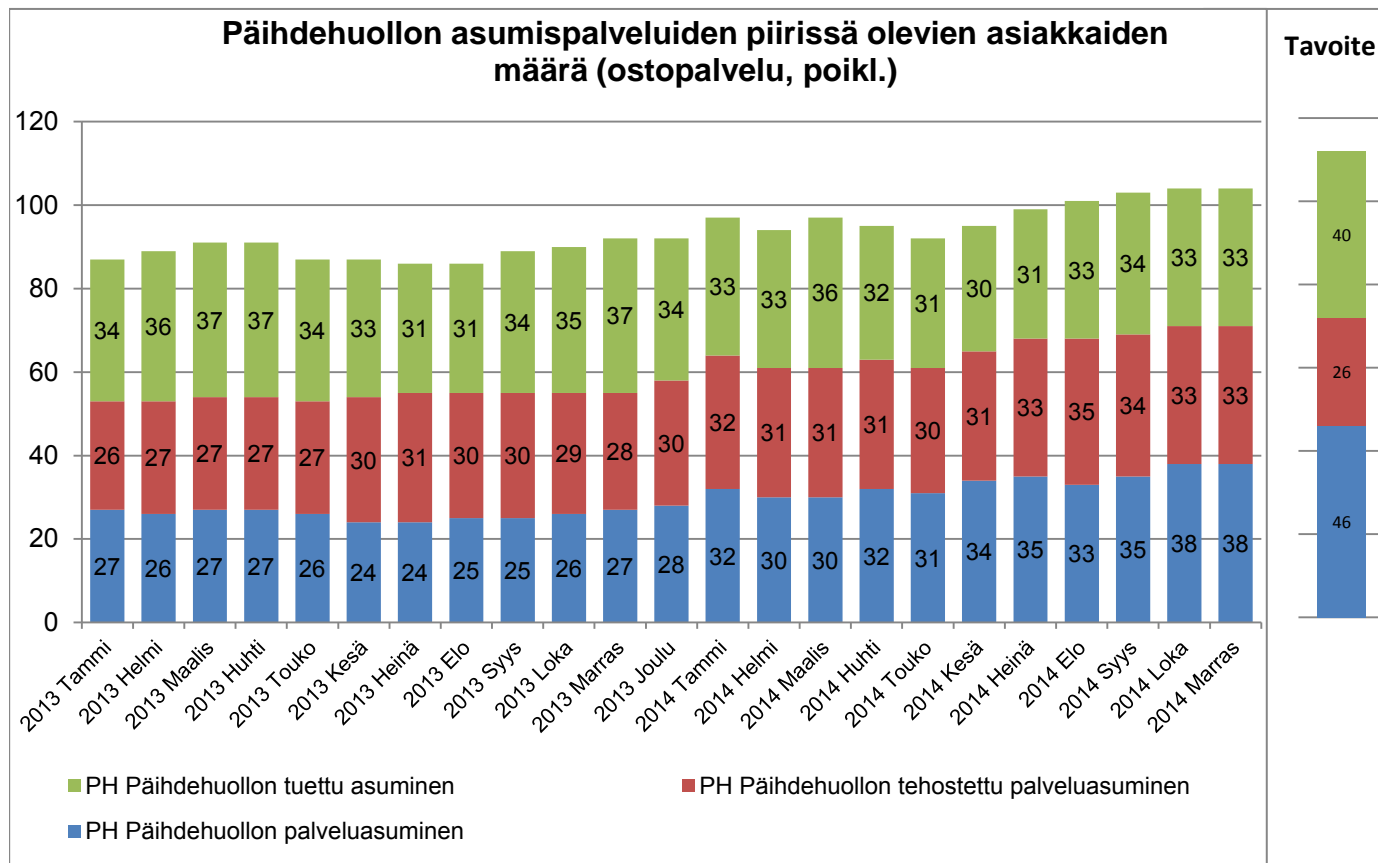


## Sijaishuollon sosiaalityö

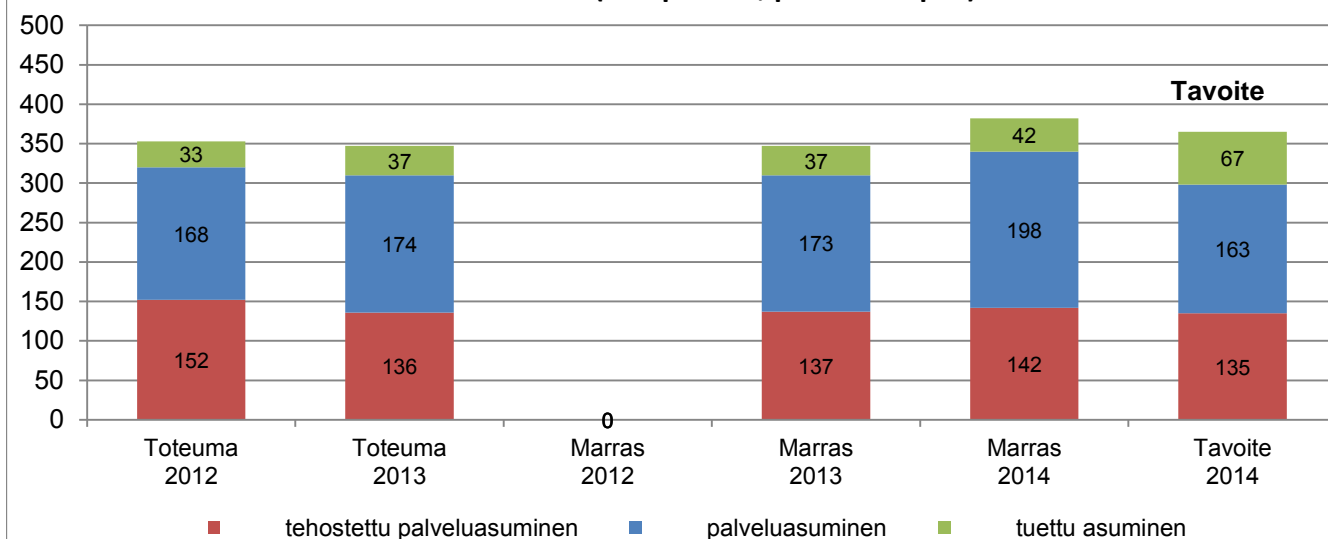




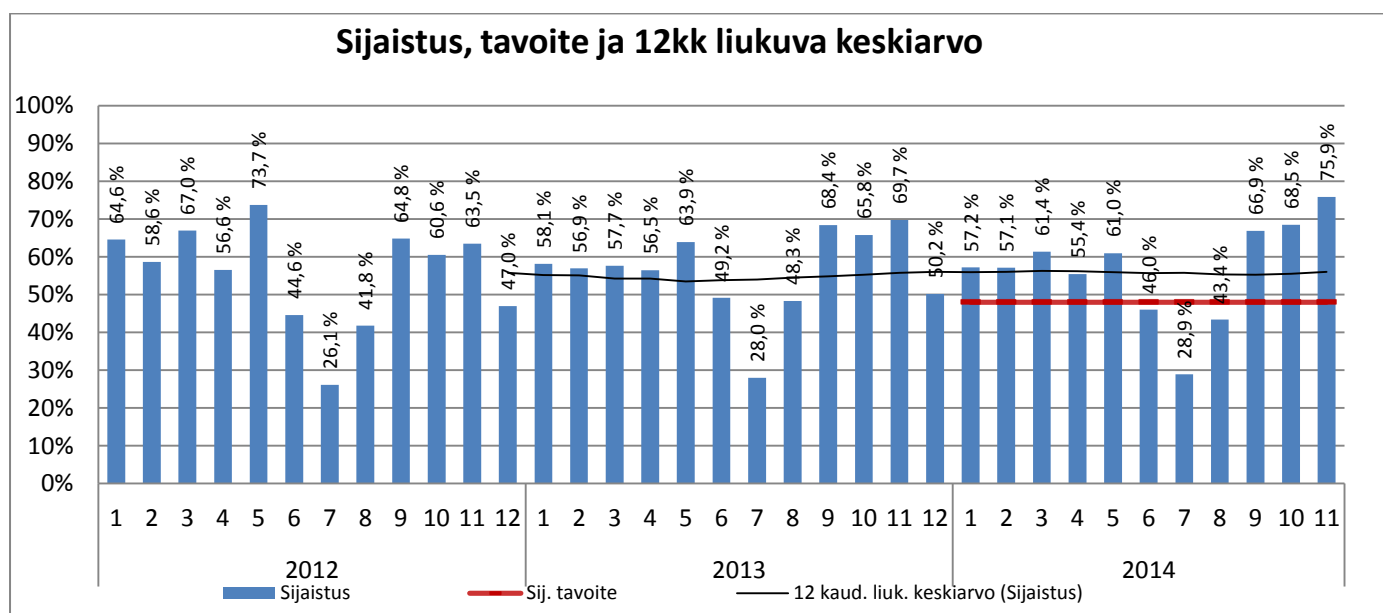
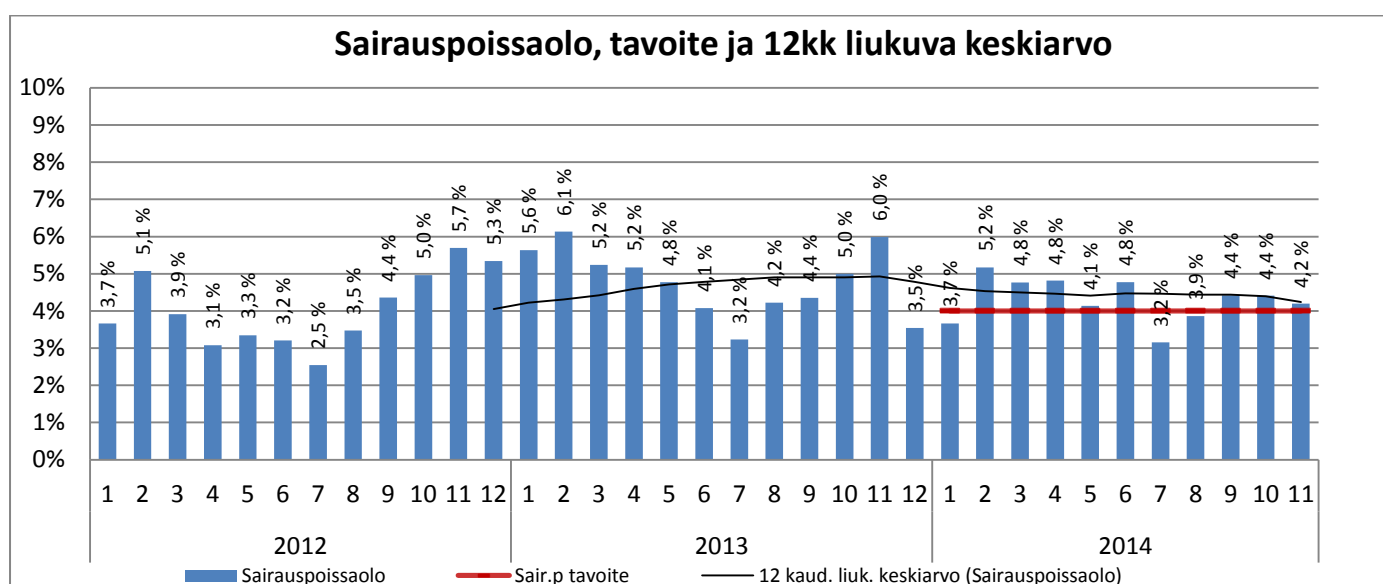
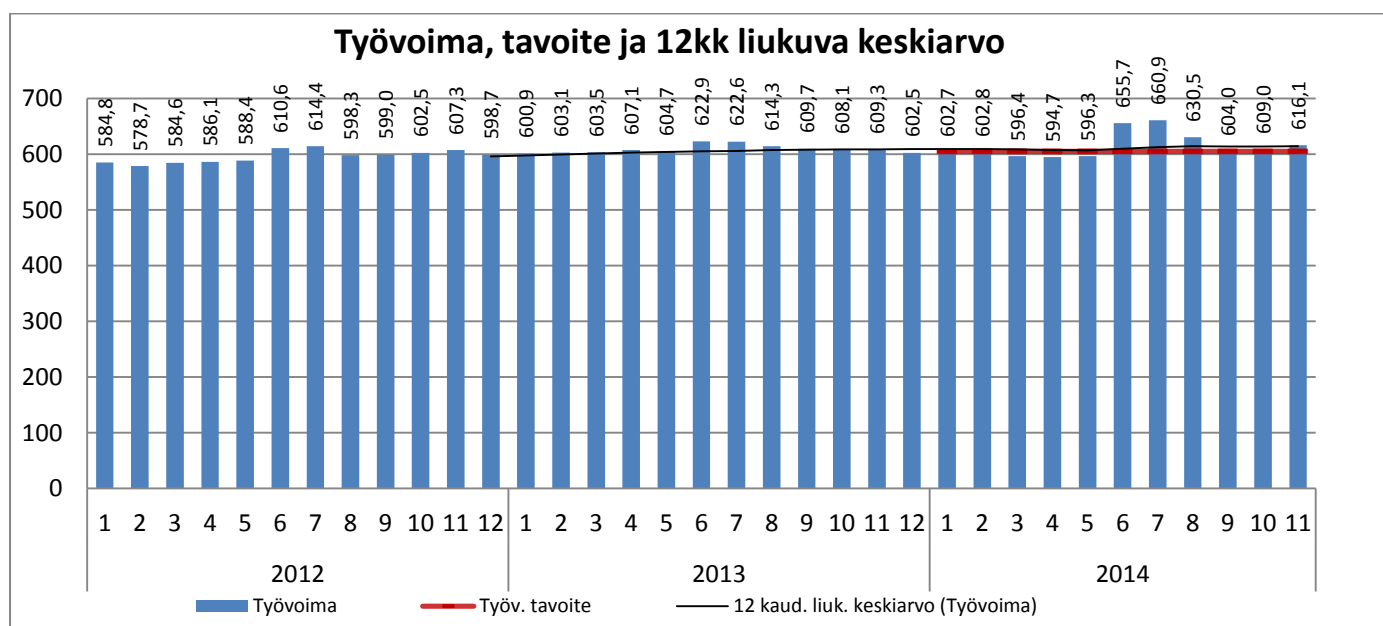
## Sosiaalityön erityispalvelut



### Mielenterveyskuntoutujien asumispalveluiden piirissä olevien asiakkaiden määrä (ostopalvelu, poikkil. 28.pvä)

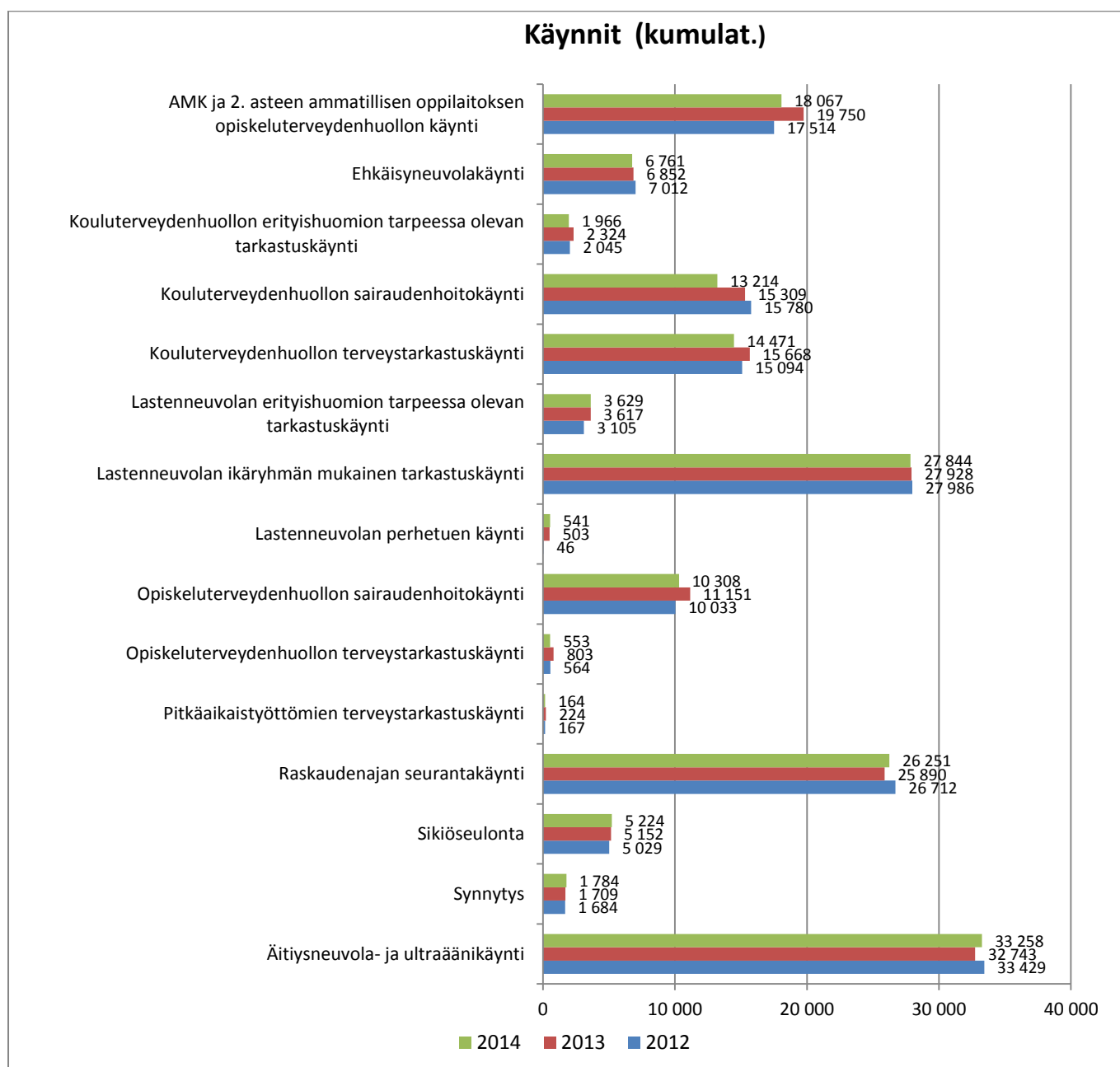


## PERUSTERVEYDENHUOLTO

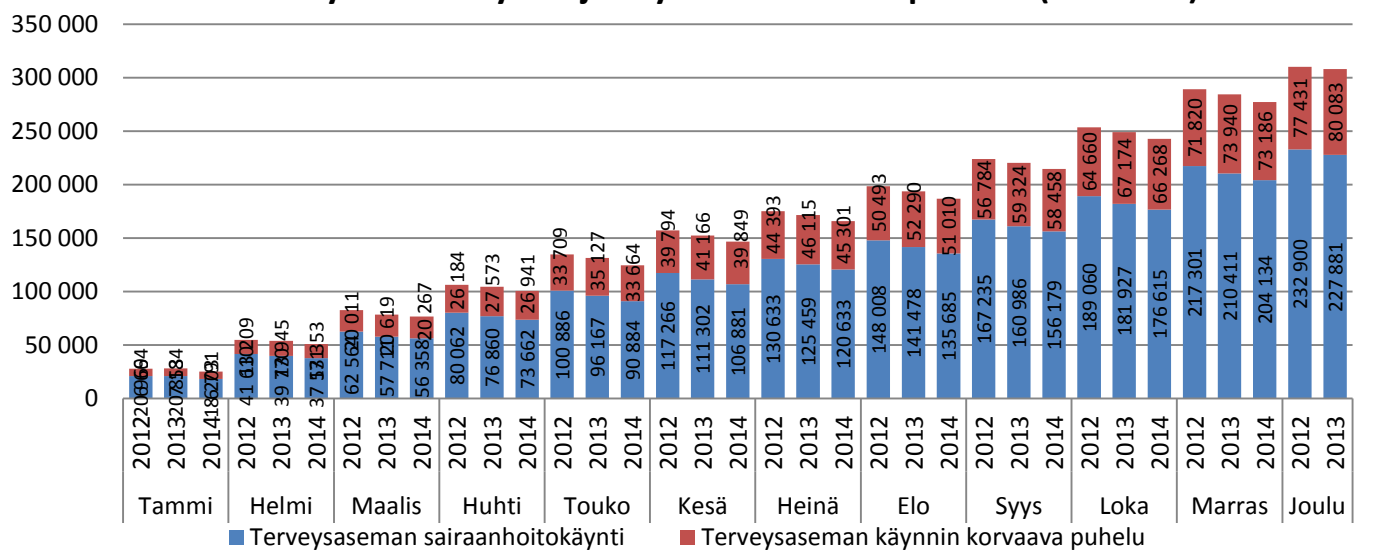


Kumulat. tarkoittaa asiastapahtumien summaa tai eri asiakkaiden määrää vuoden alusta raportointikuukauden loppuun (tammi-marraskuu)

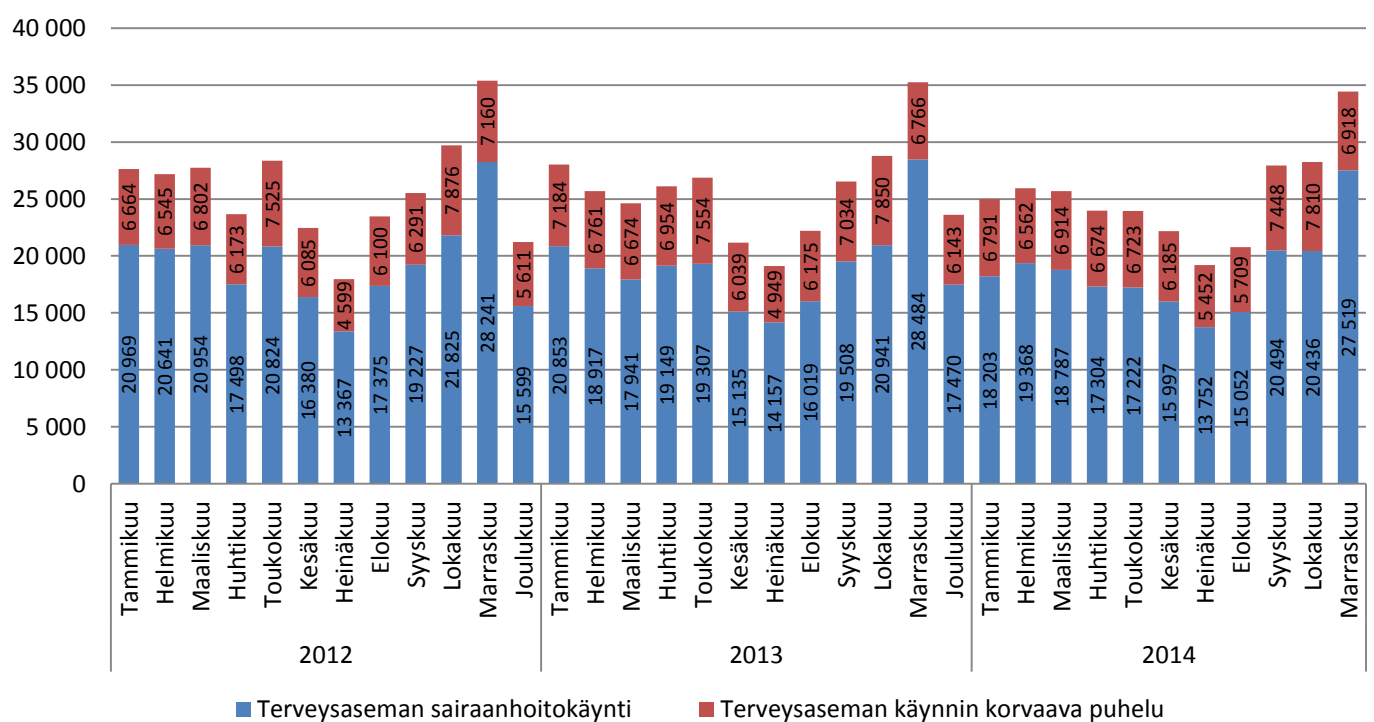




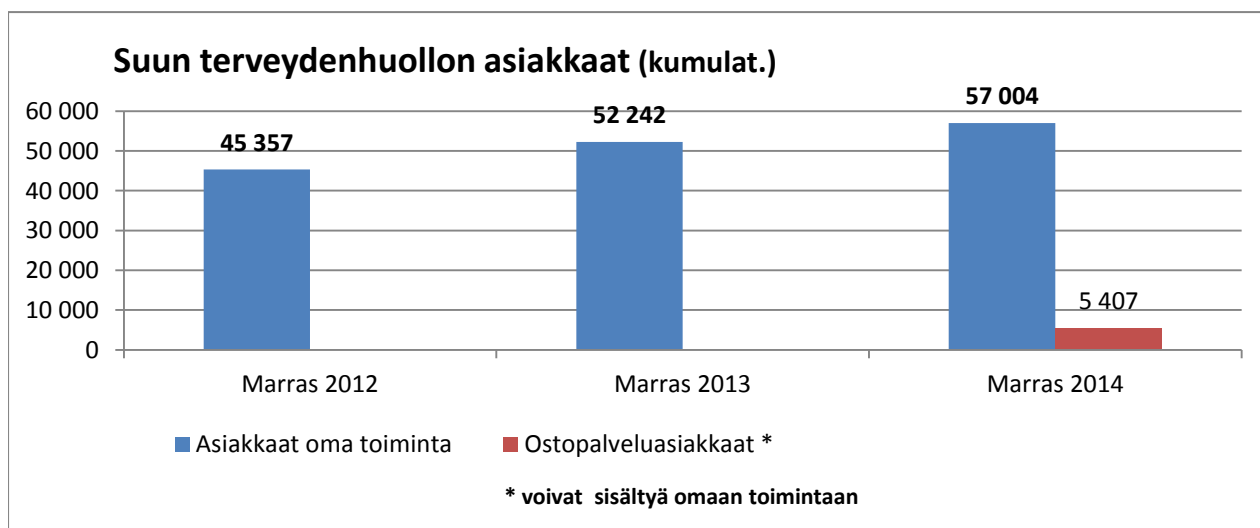
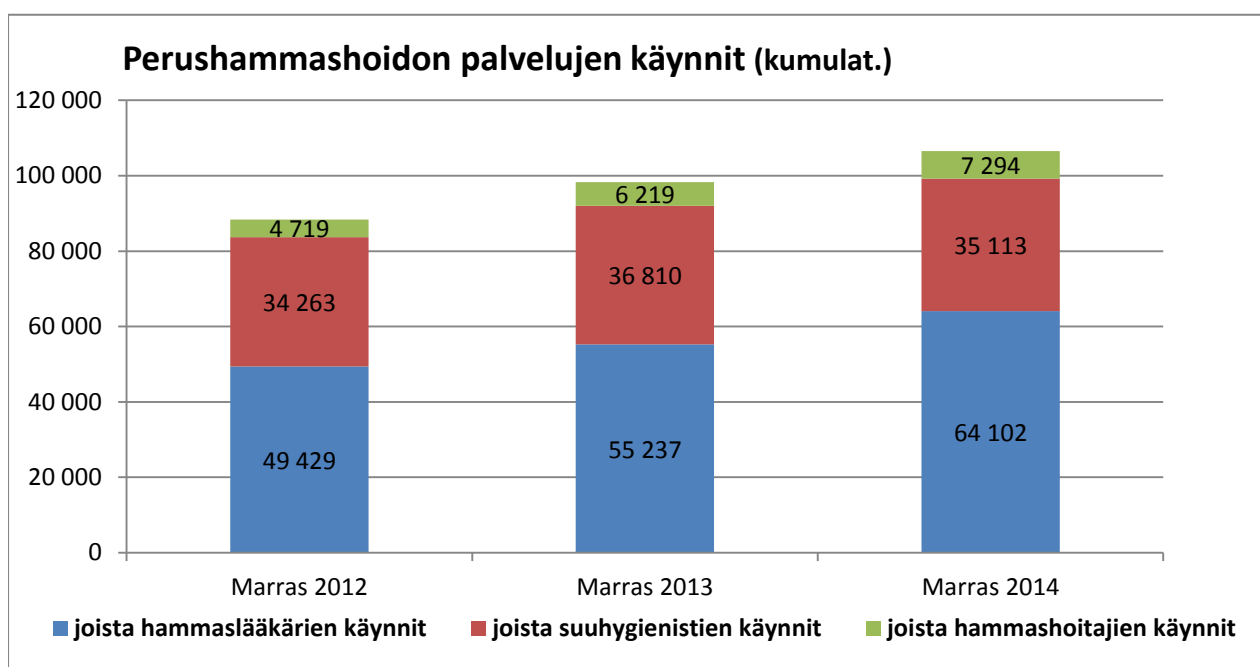
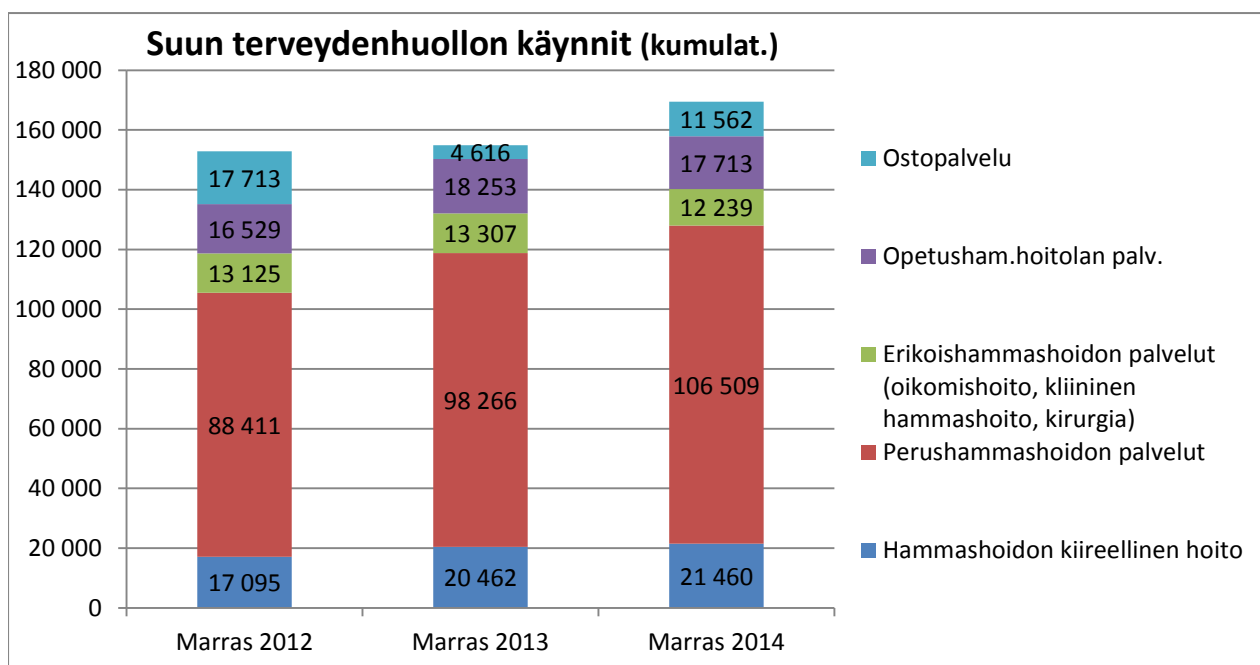
### Terveysasemakäynnit ja käynnin korvaavat puhelut (kumulat.)



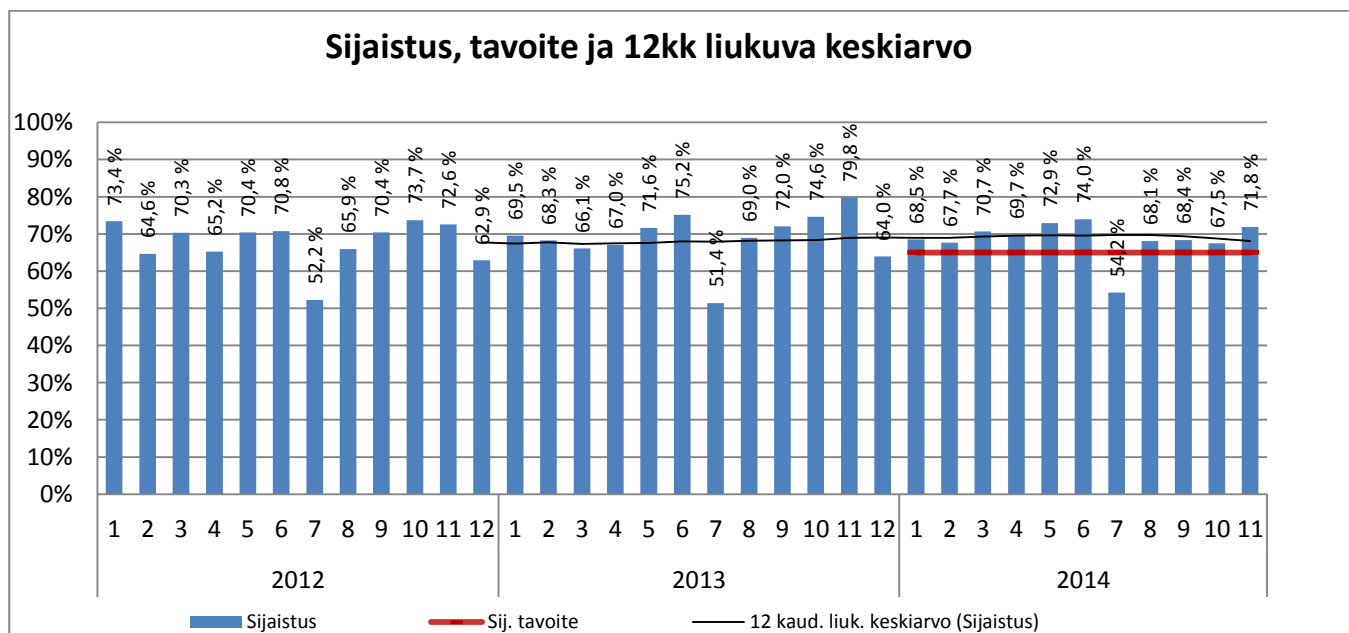
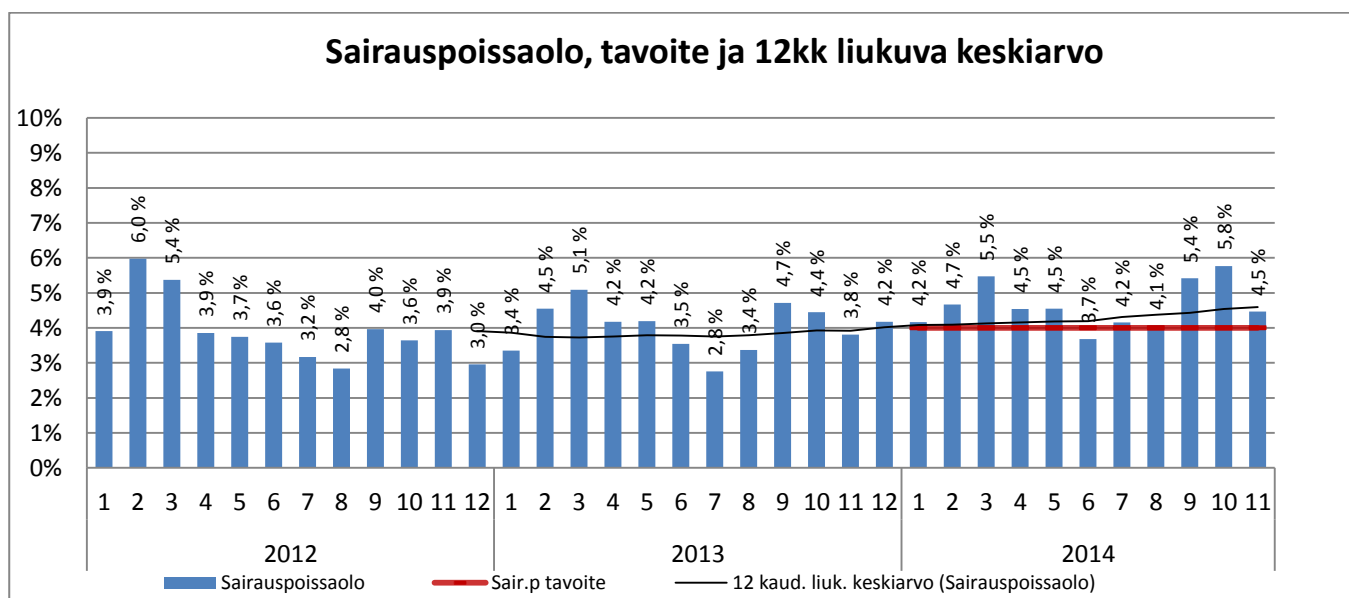
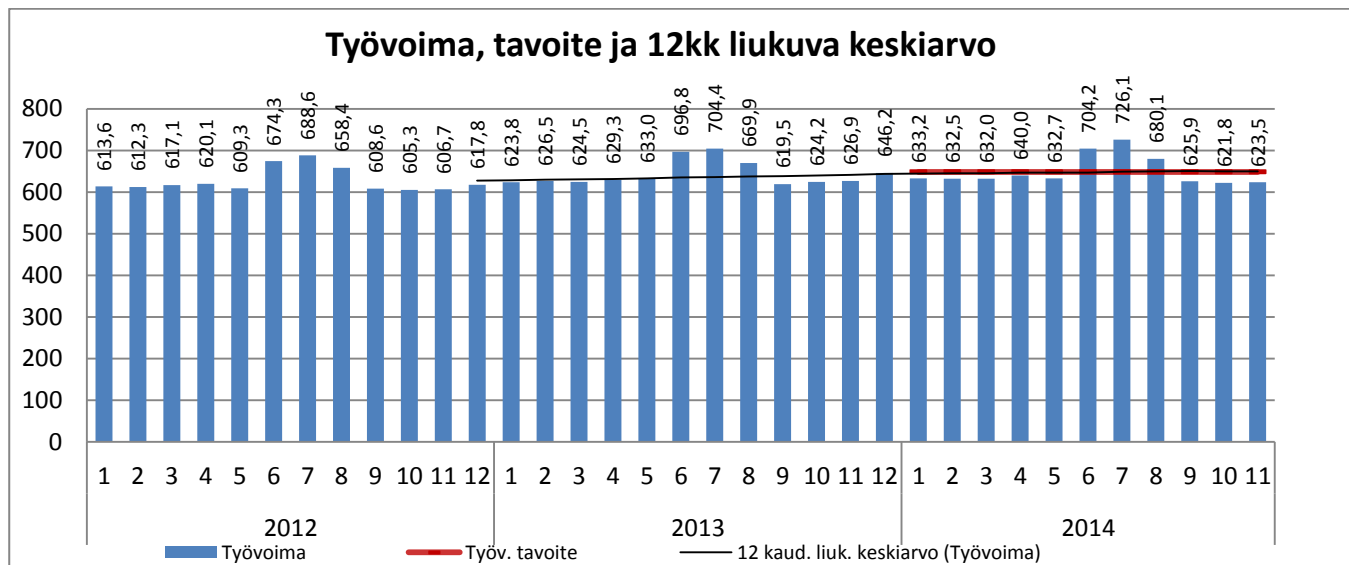
### Terveysasemakäynnit ja käynnin korvaavat puhelut kuukausittain



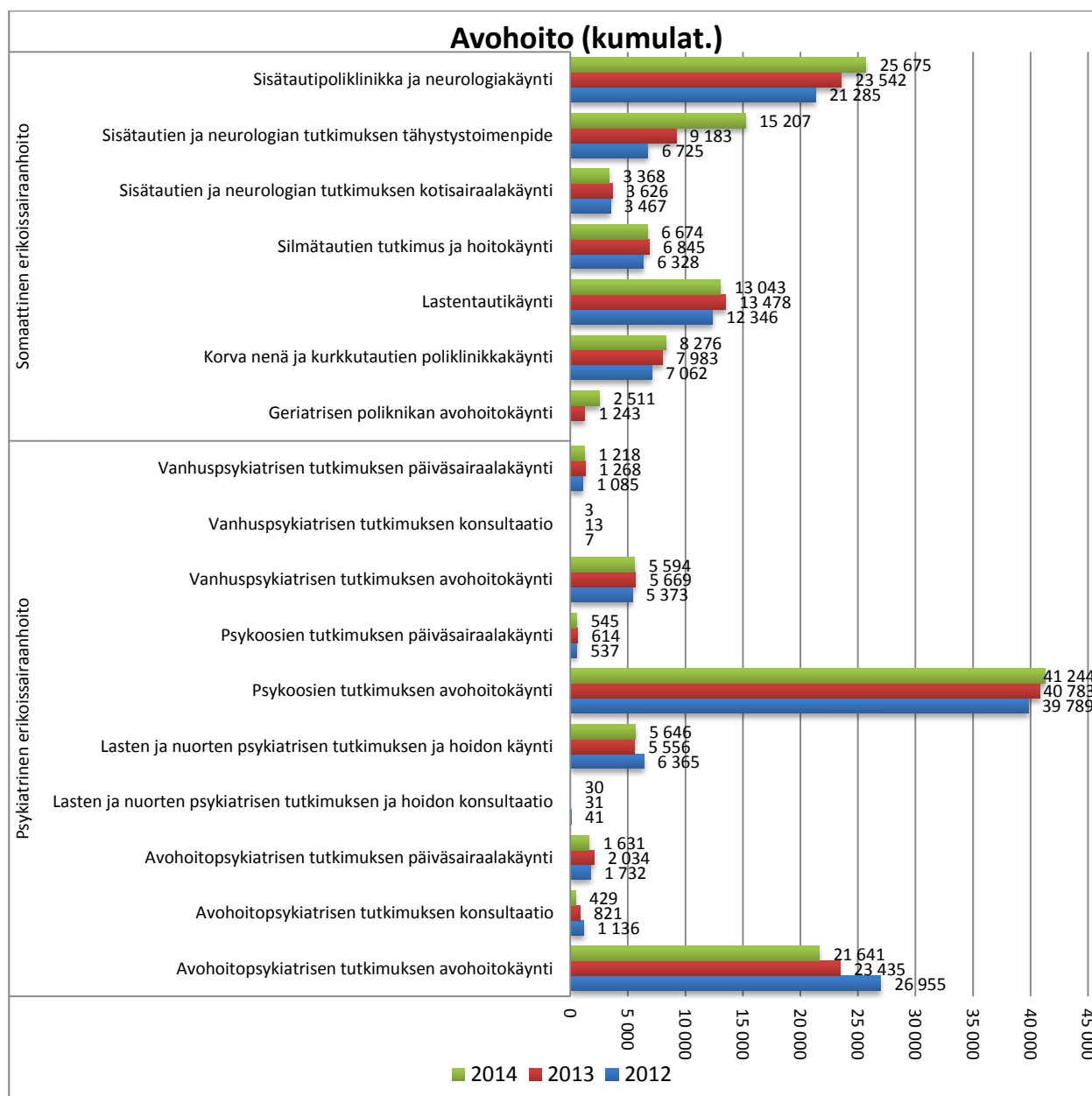
## Suun terveydenhuolto



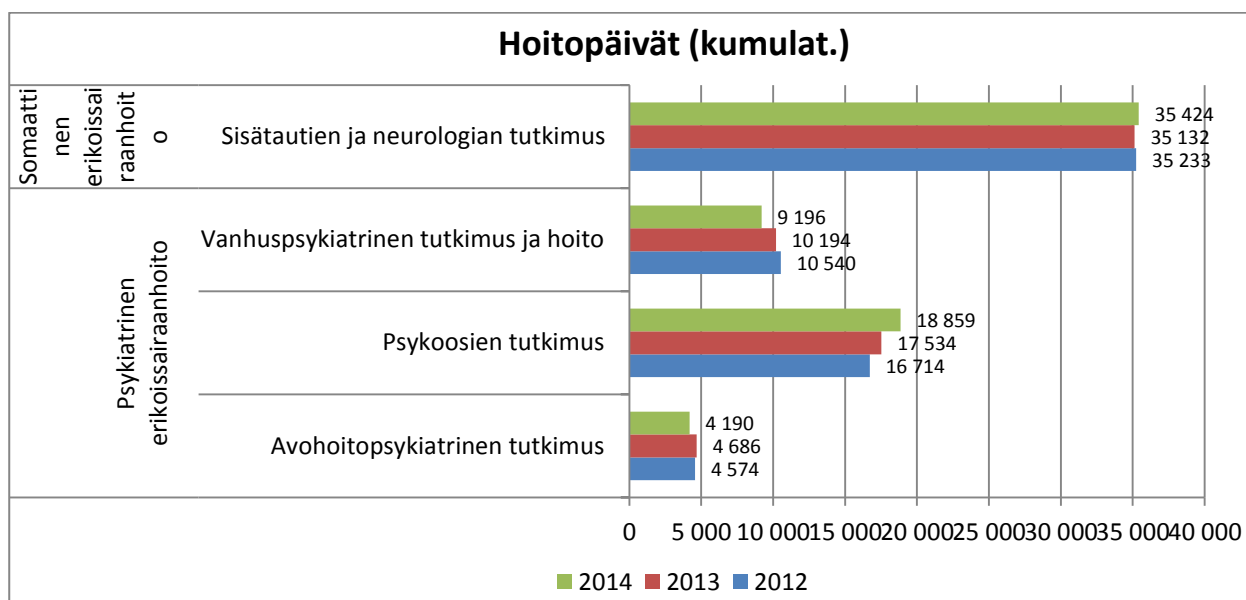
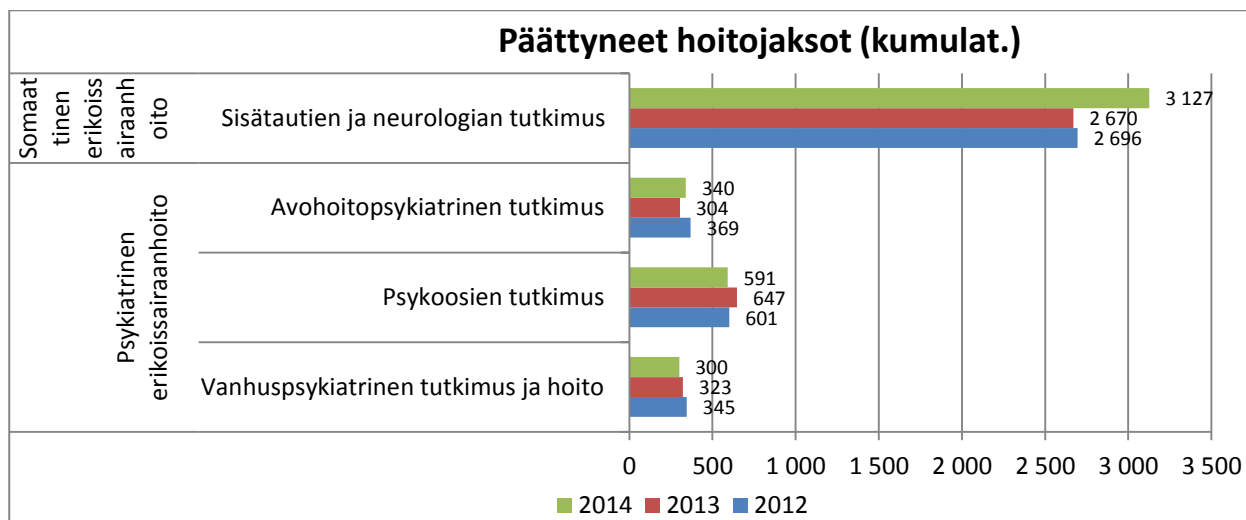
## ERIKOISSAIRAANHOITO



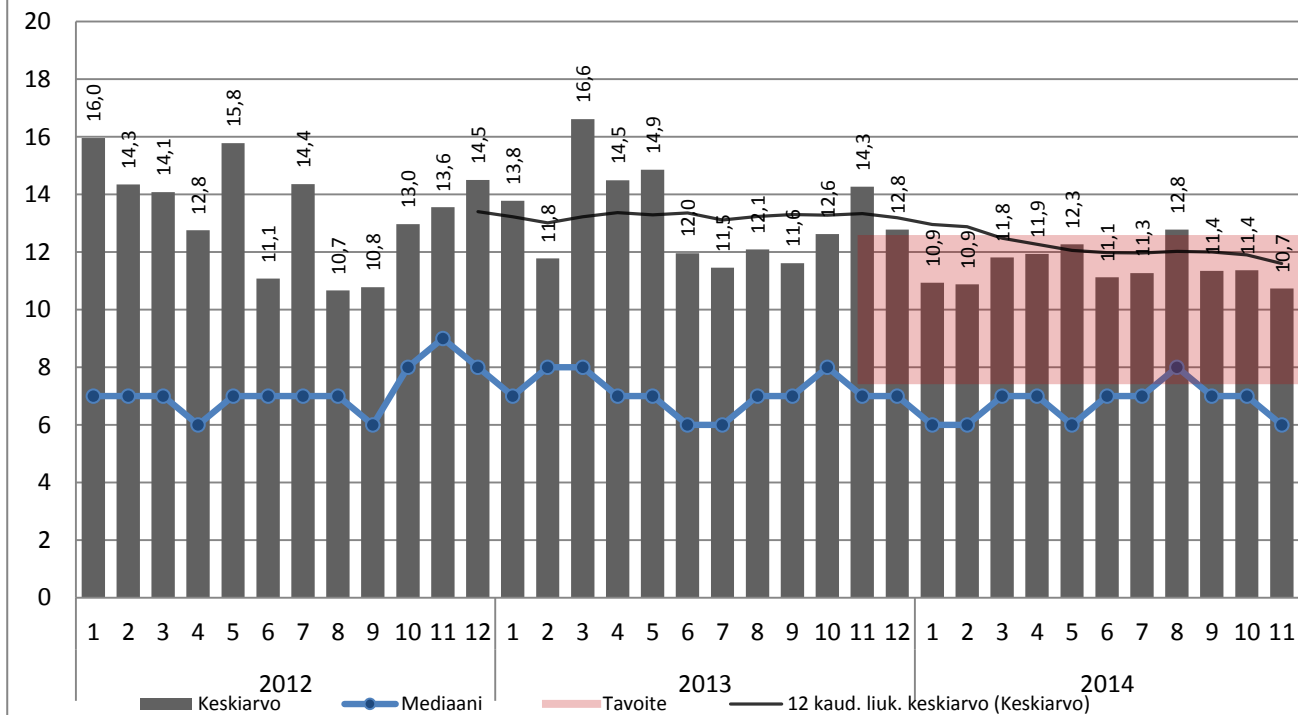
## Oma toiminta: Avohoito



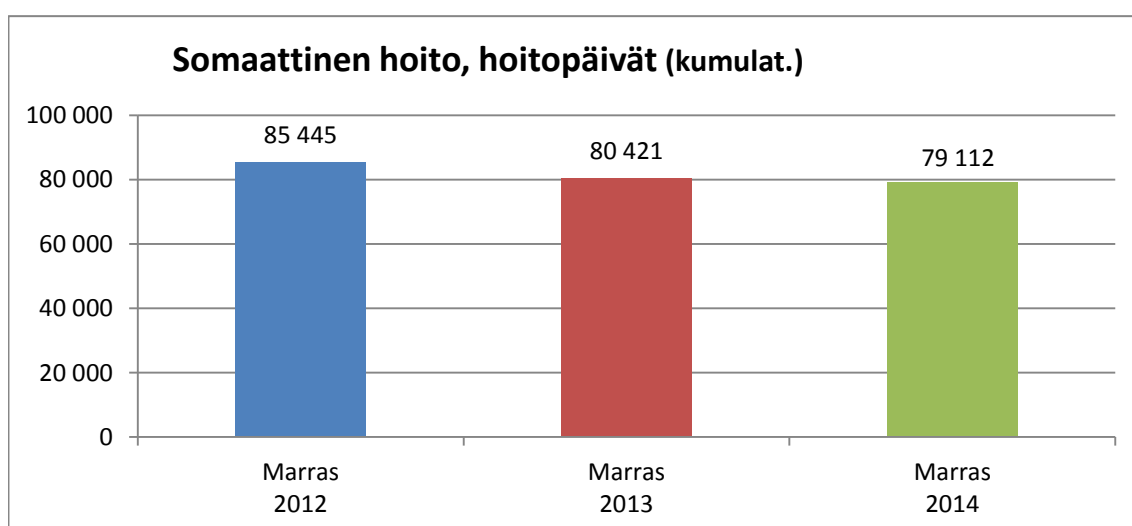
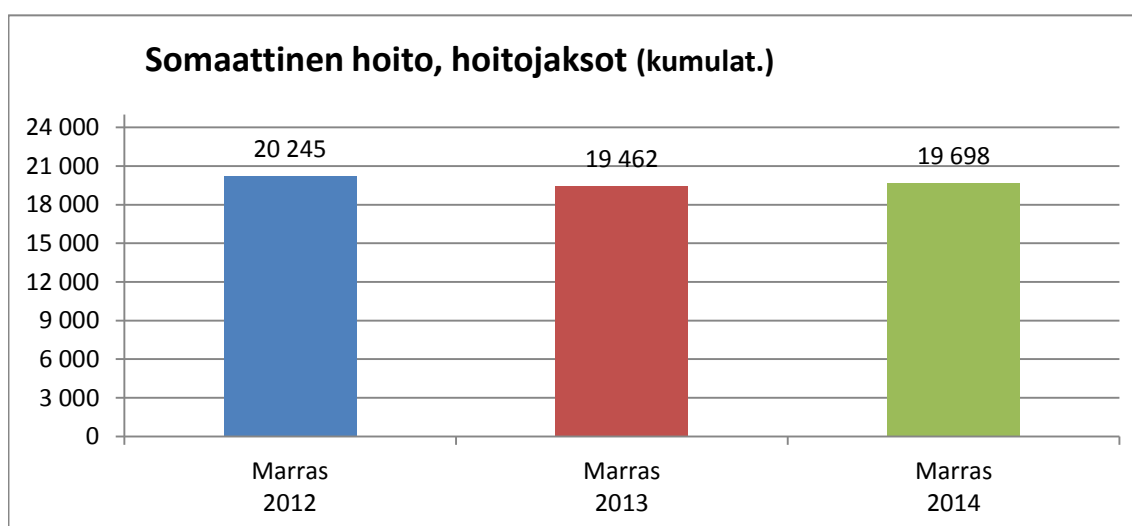
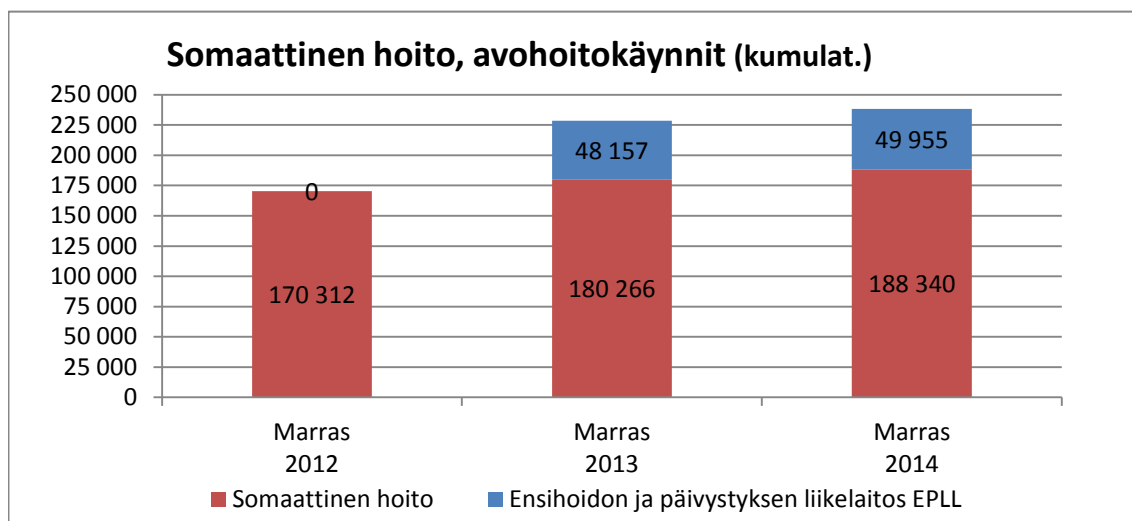
## Oma toiminta: Sairaalahoito



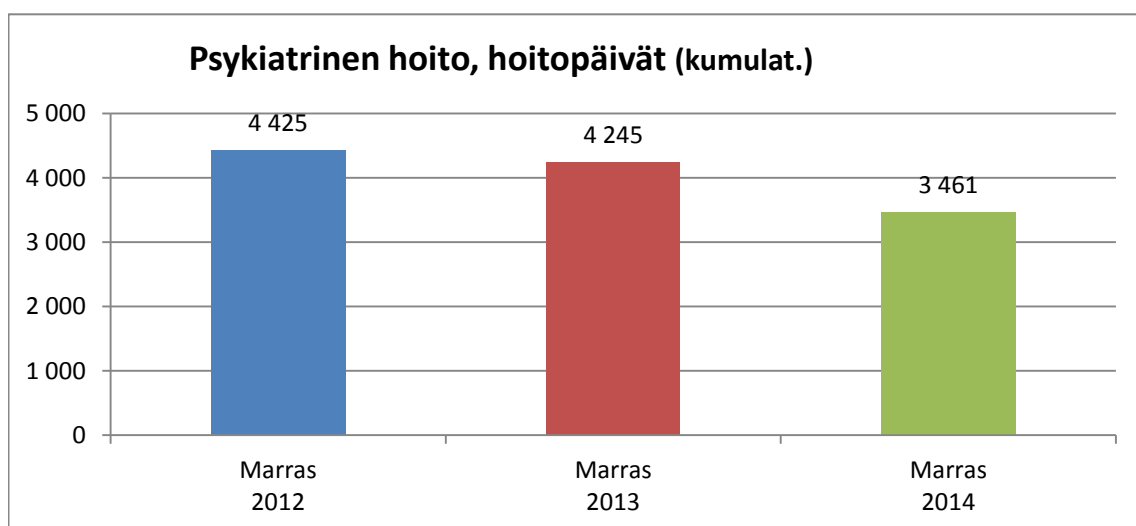
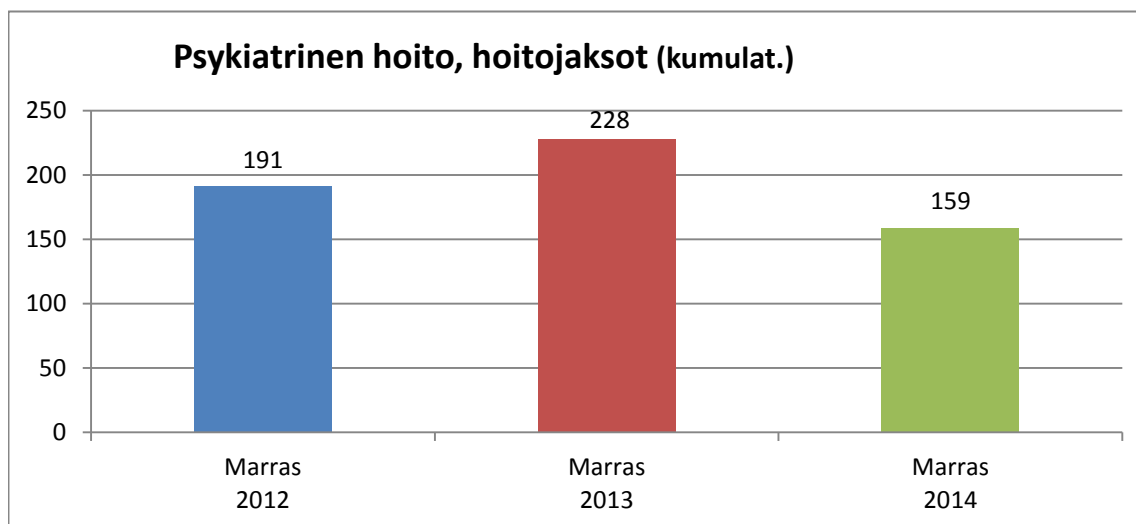
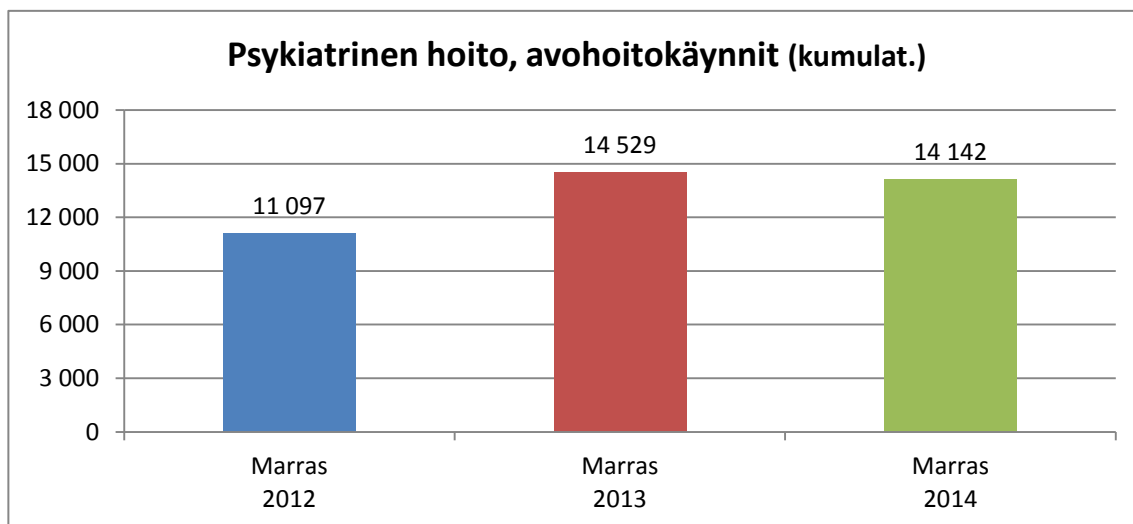
## Oman esh:n som. hoitajaksojen pituus, tavoite 2014: 8-12 vrk



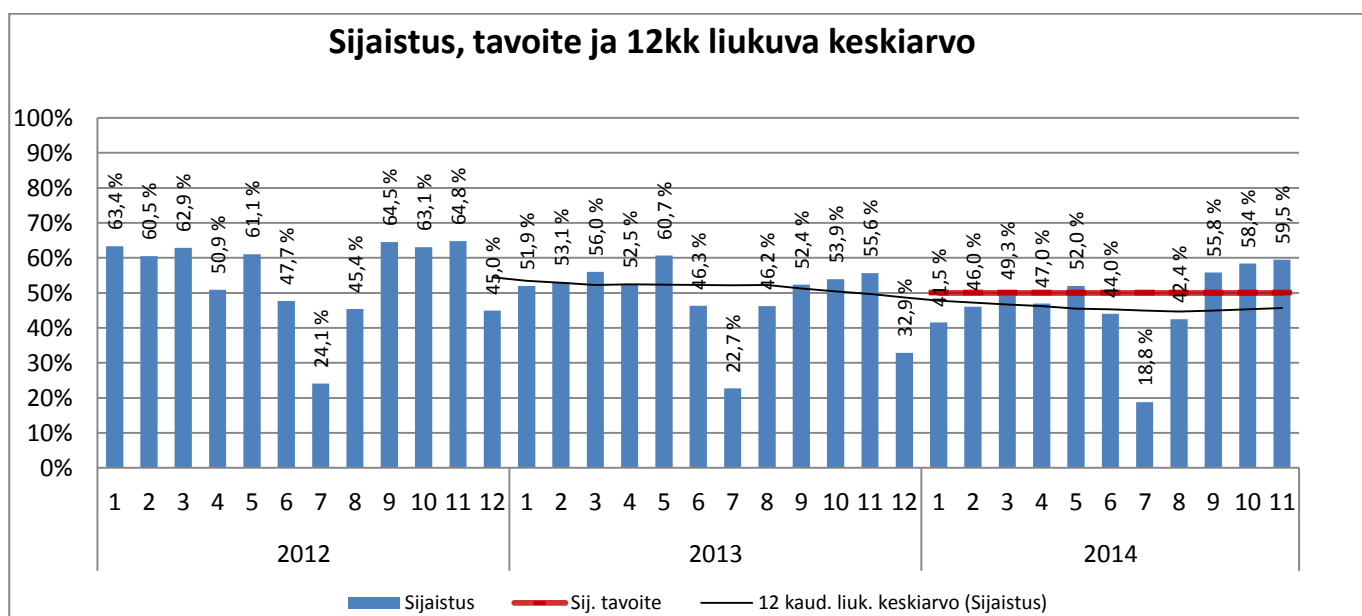
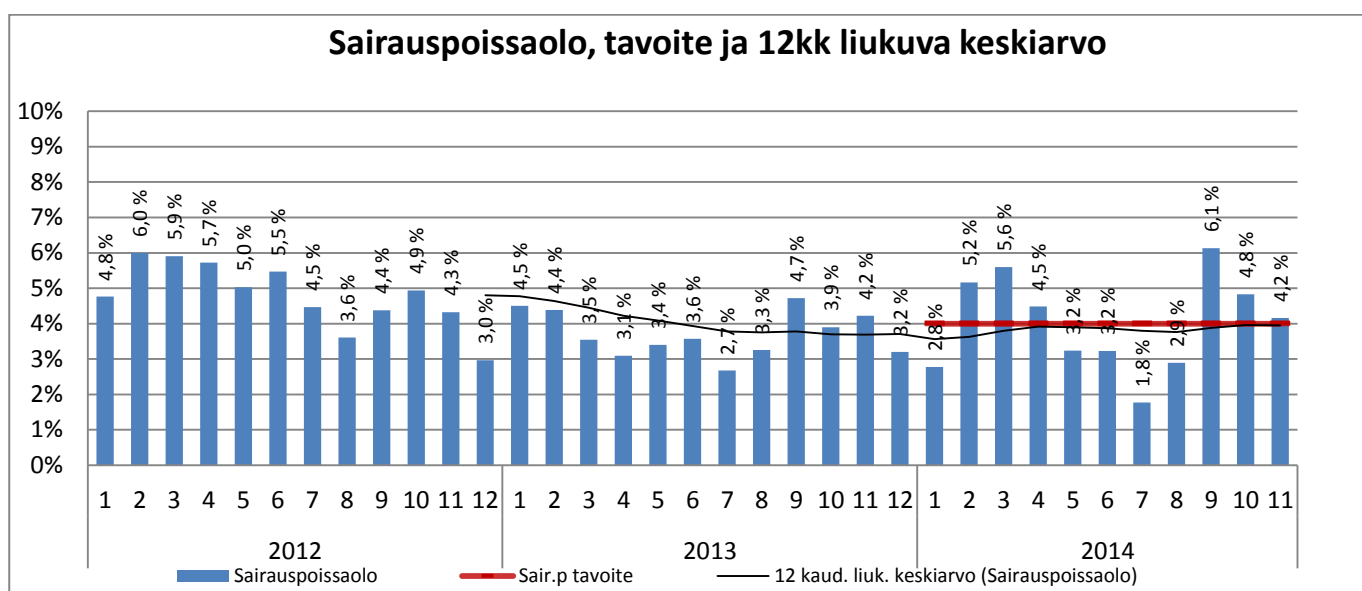
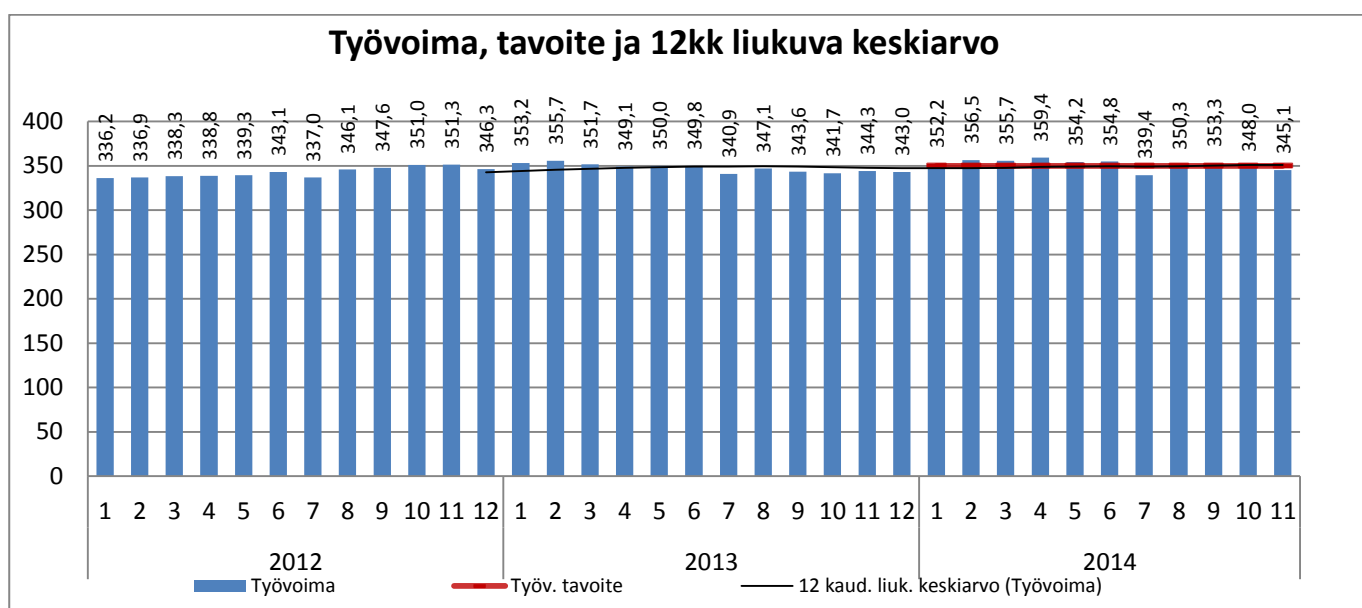
## Sairaanhoitopiiri





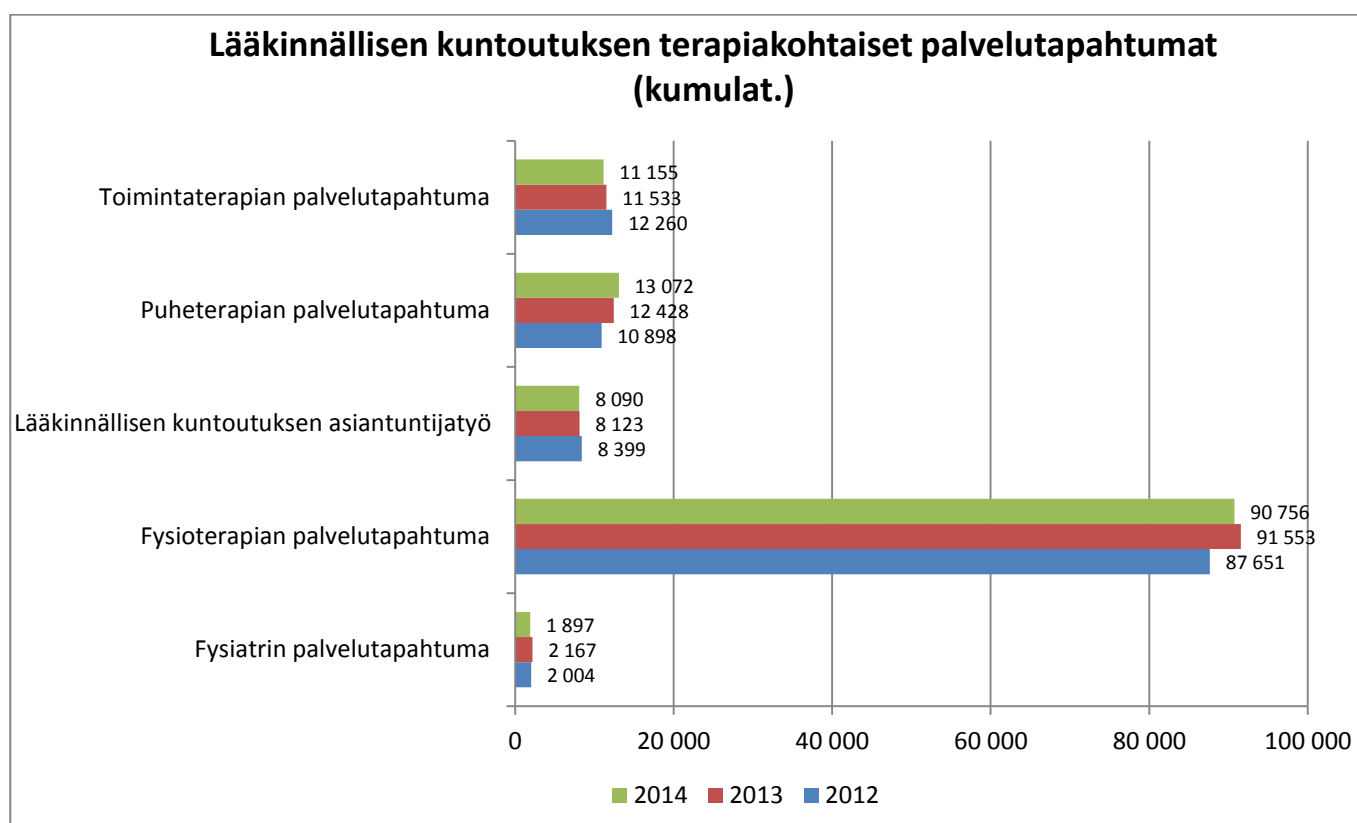
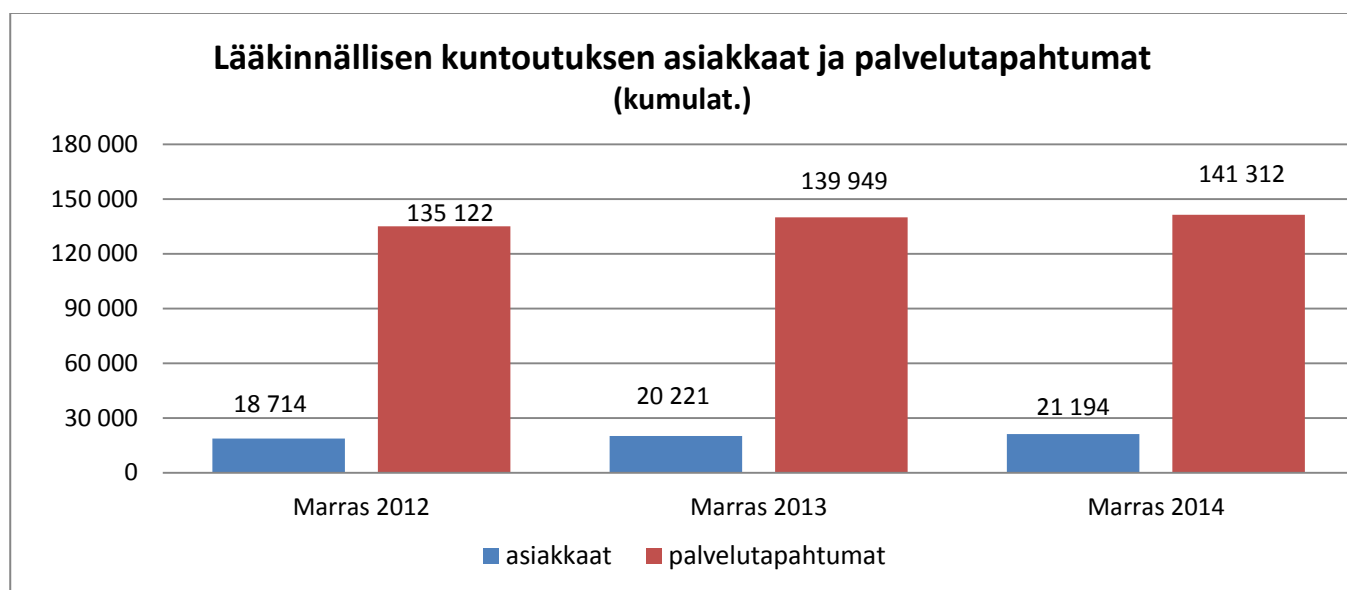


## KUNTOUTUMISPALVELUT

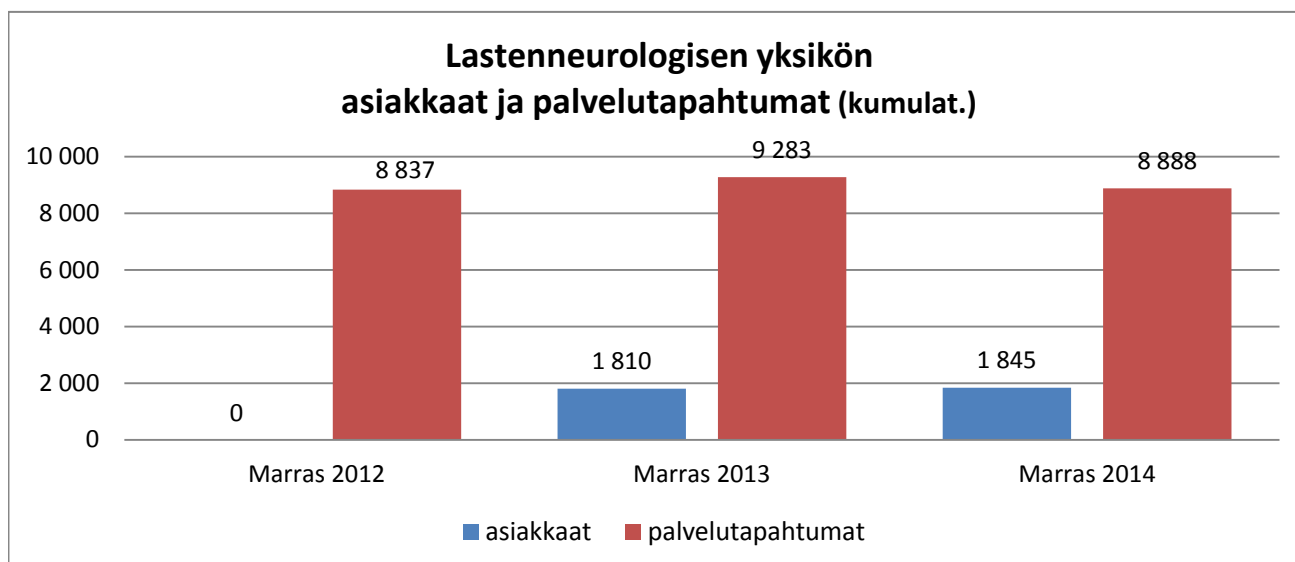


Kumulat. tarkoittaa asiastapahtumien summaa tai eri asiakkaiden määrää vuoden alusta raportointikuukauden loppuun (tammi-marraskuu)

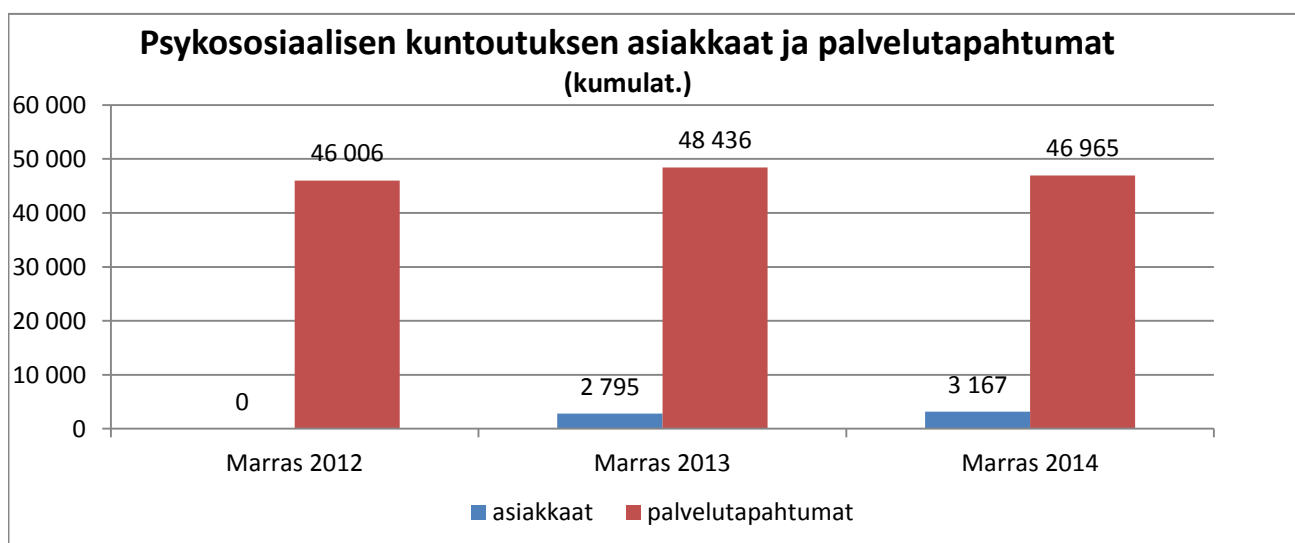
## Lääkinnällinen kuntoutus



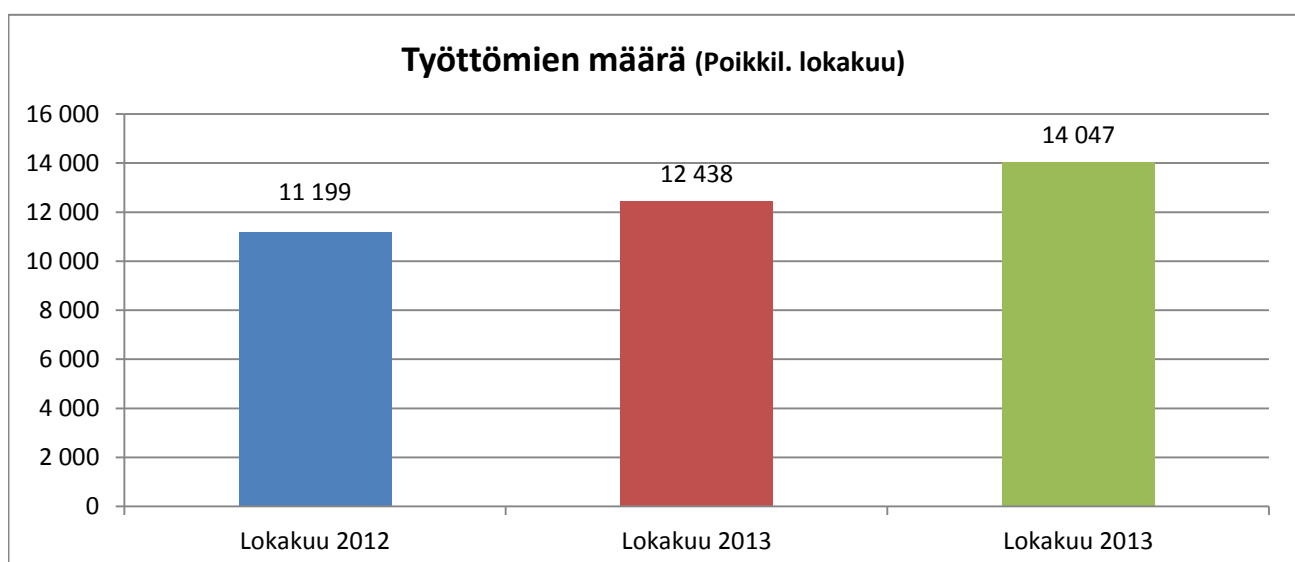
## Lastenneurologinen yksikkö



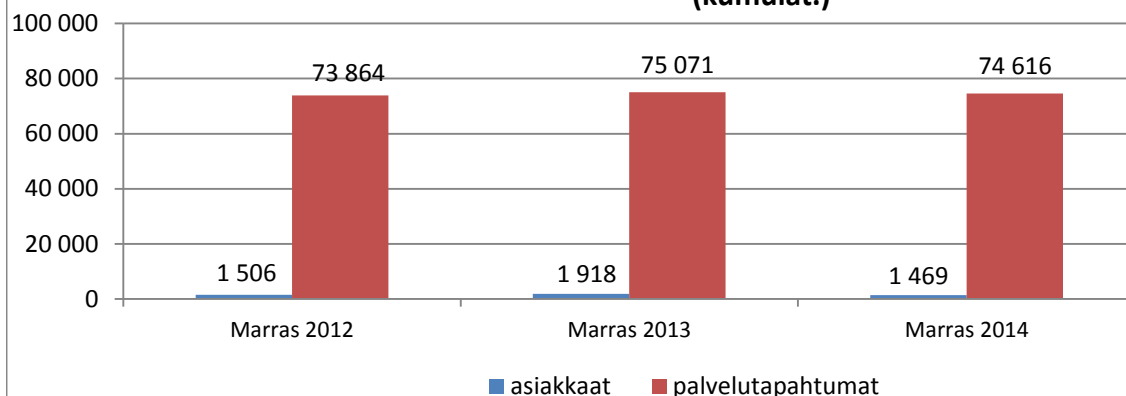
## Psykososiaalinen kuntoutus



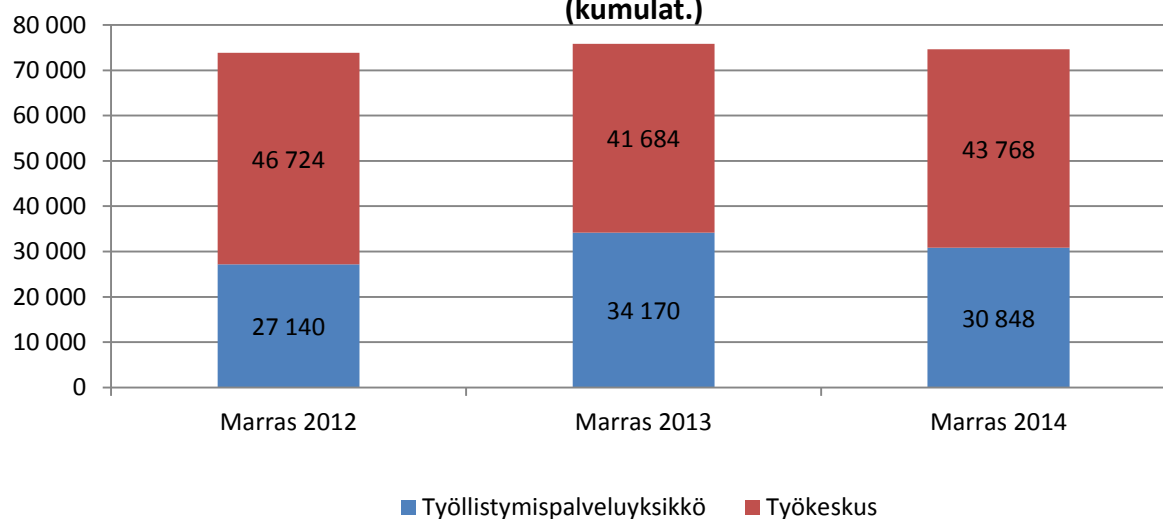
## Työelämäkuntoutus



### Työelämäkuntoutuksen asiakkaat (poikkil.) ja palvelutapahtumat (kumulat.)

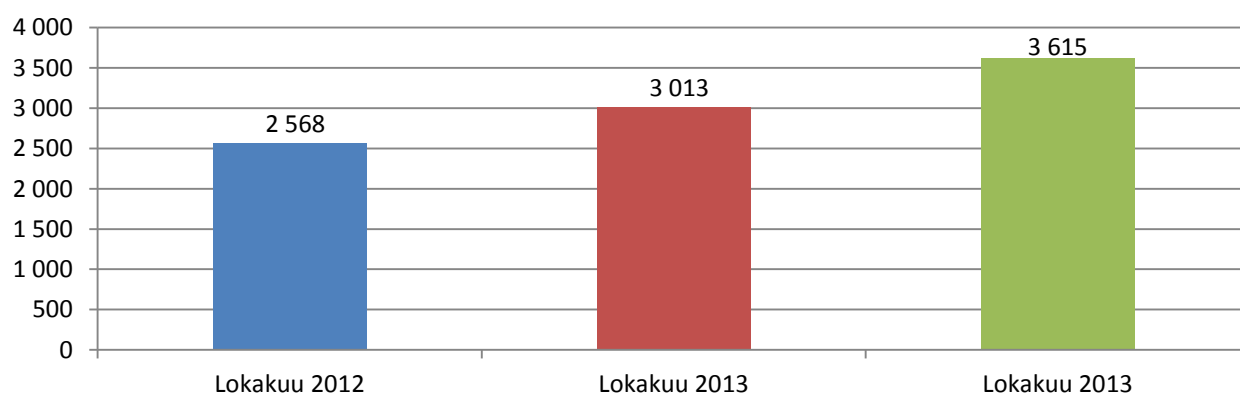


### Työllistymispalveluyksikön ja työkeskuksen palvelutapahtumat (kumulat.)

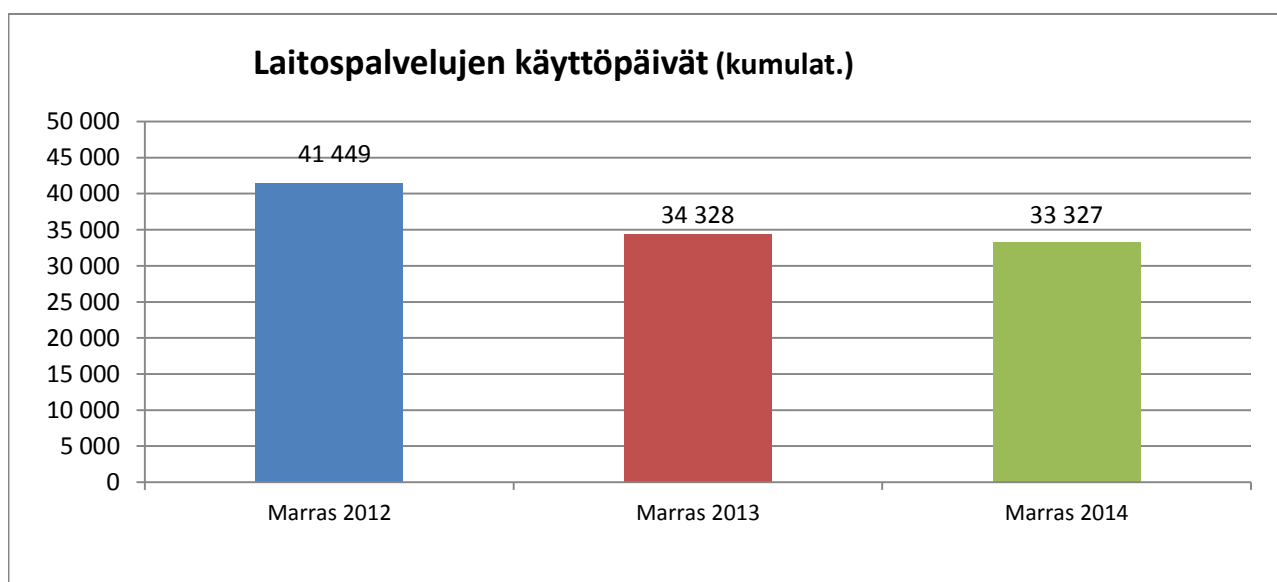
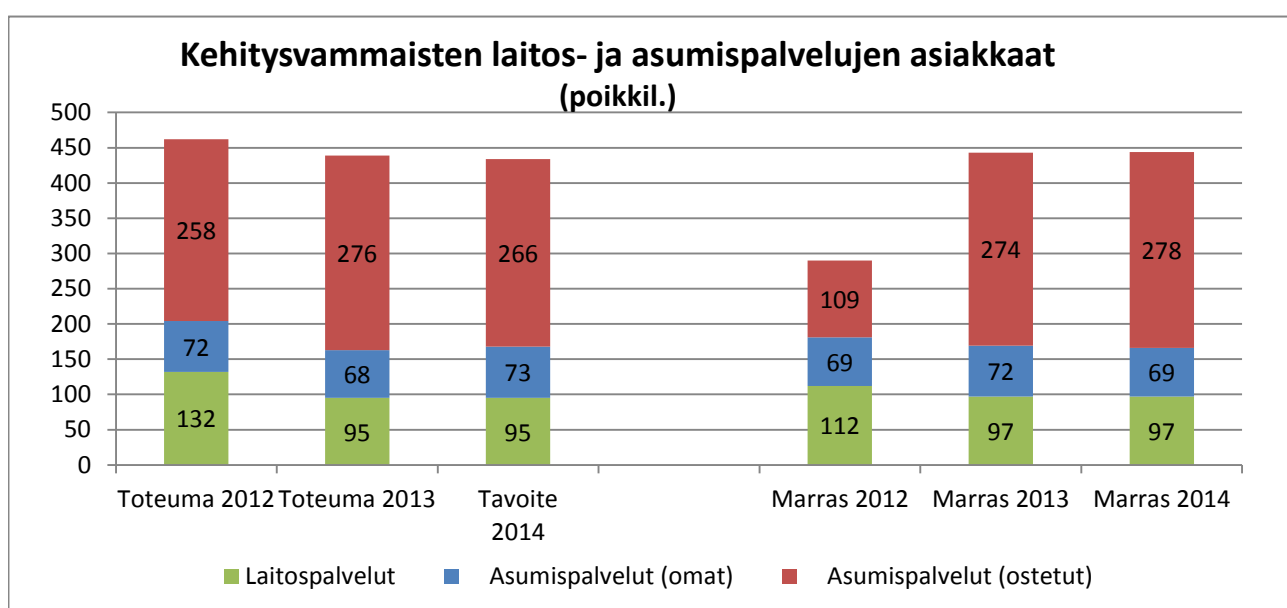
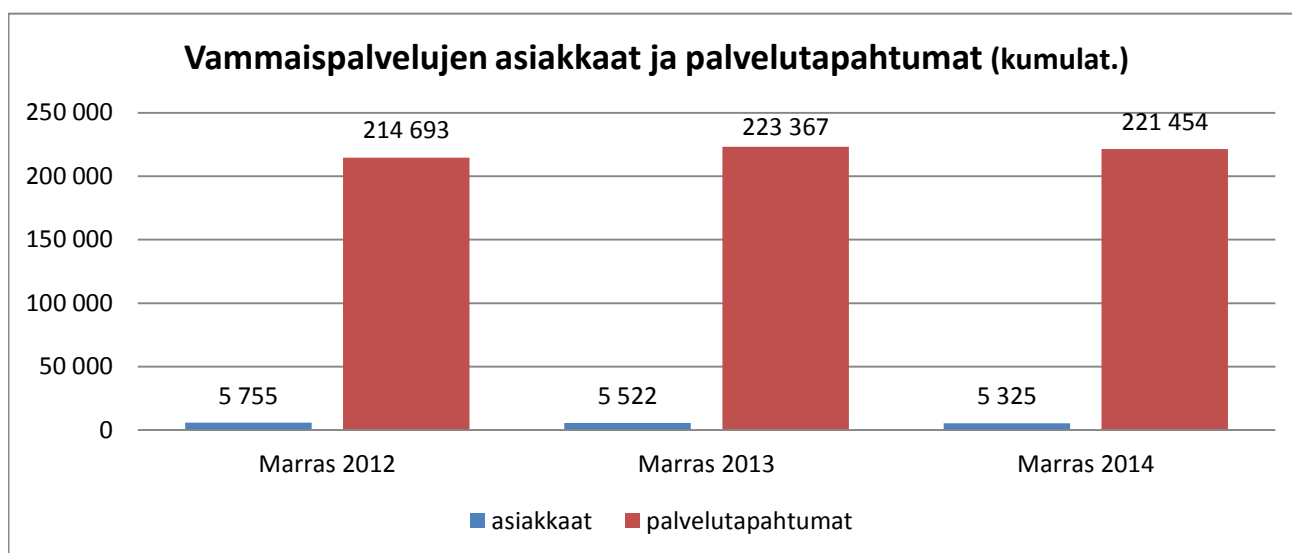


### Työmarkkinatuella olevat henkilöt (poikkil. lokakuu)

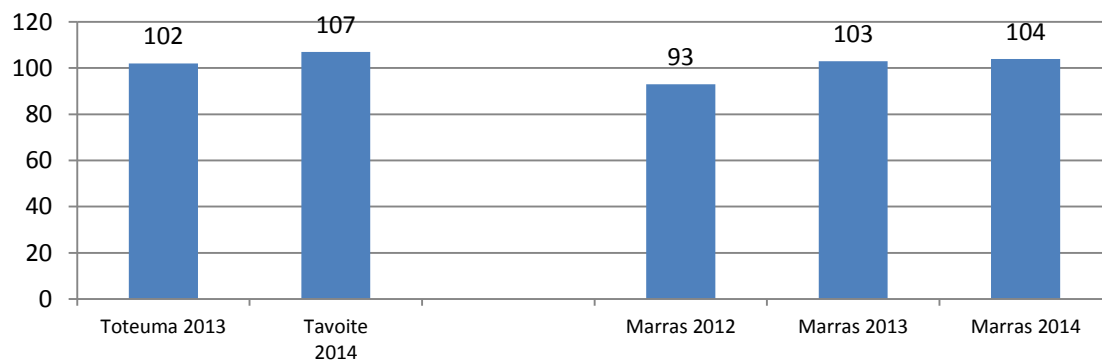
Tavoite 2014: 2700



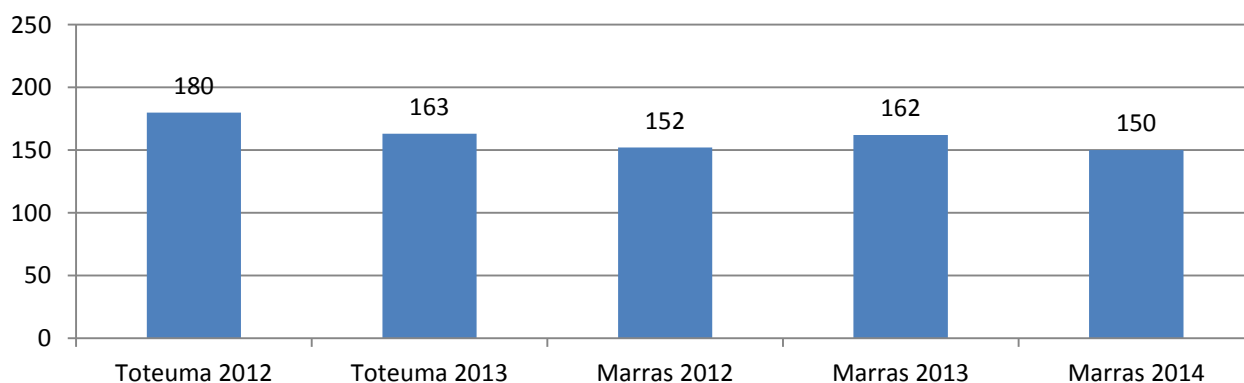
## Vammaispalvelut



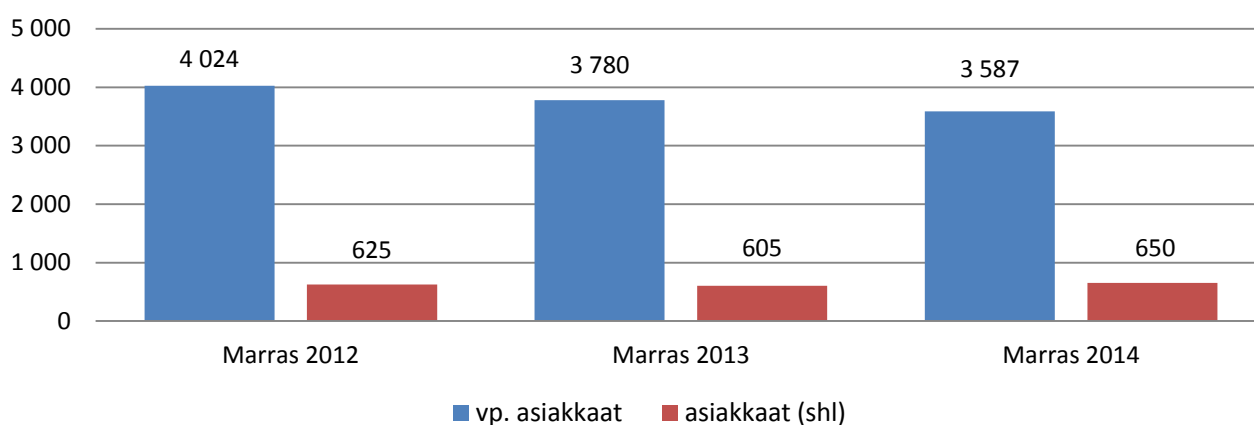
### Vaikeavammaisten palveluasumisen asiakkaat (poikkil.)



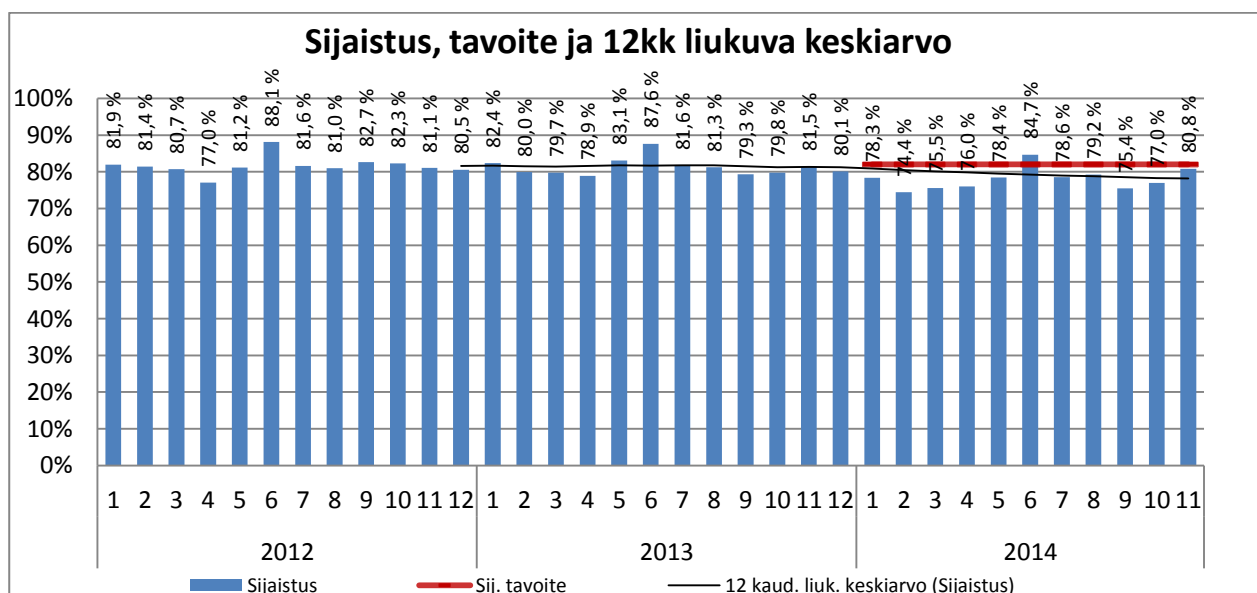
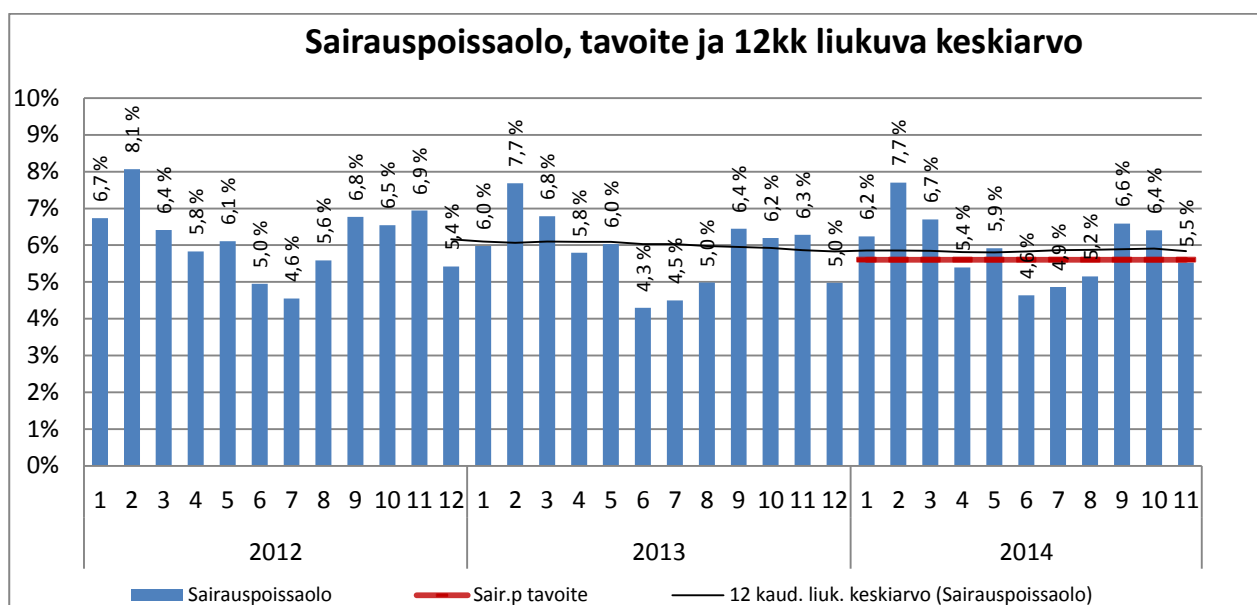
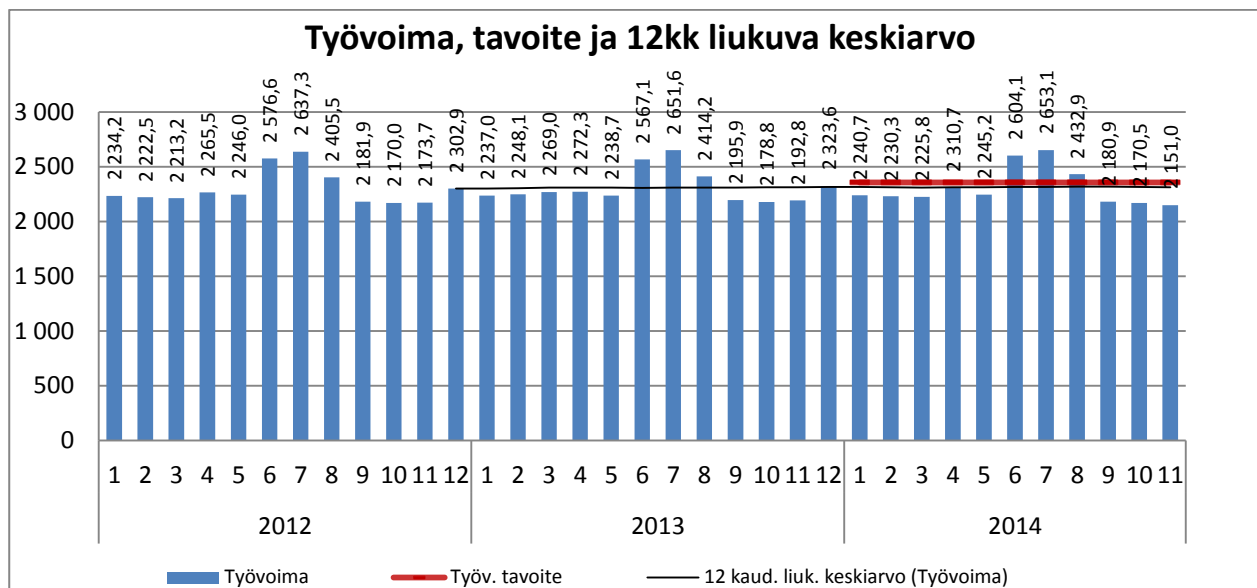
### Vammaisten ja pitkäaikaissairaiden lasten omaishoidontuen asiakkaat (poikkil.)



### Kuljetuspalvelujen asiakkaat (kumulat.)

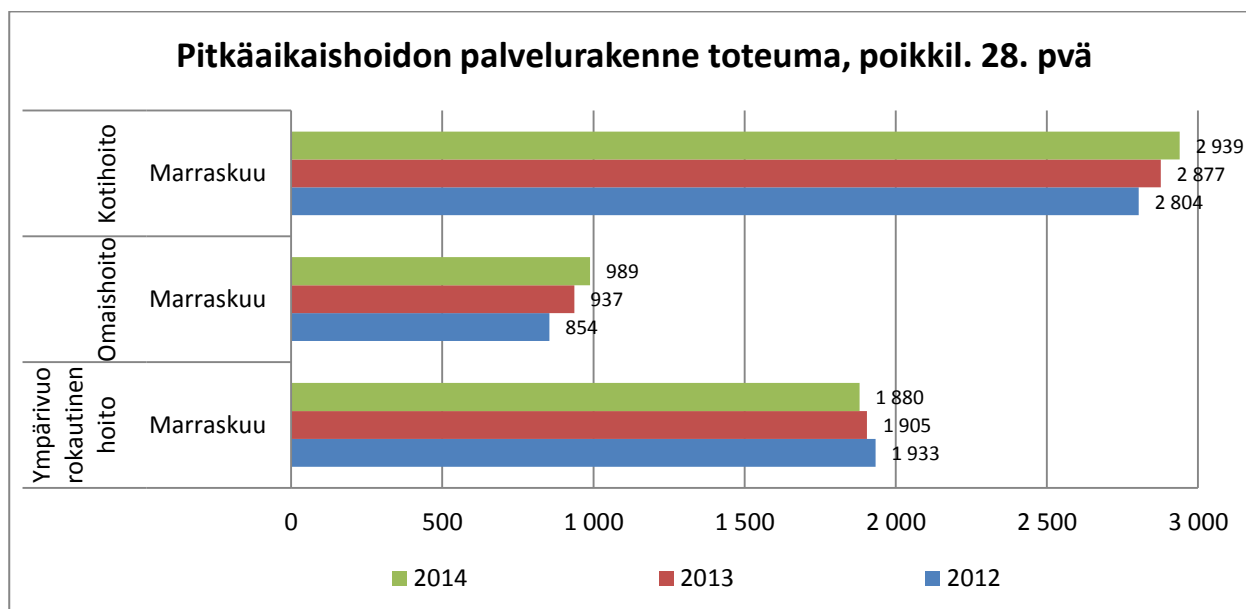
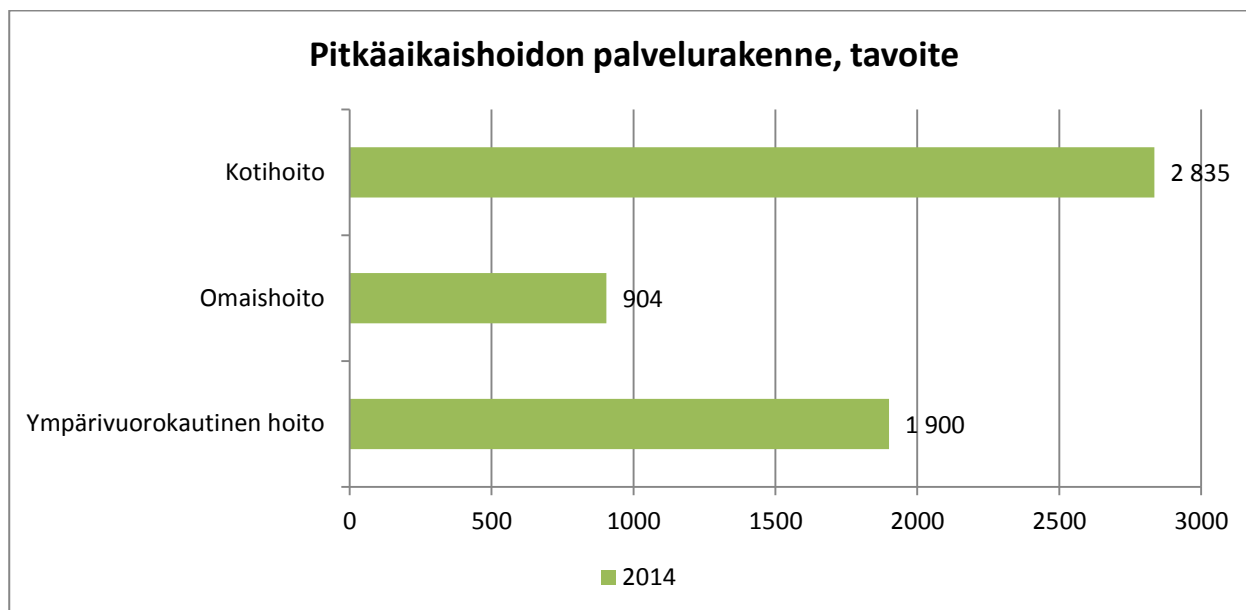


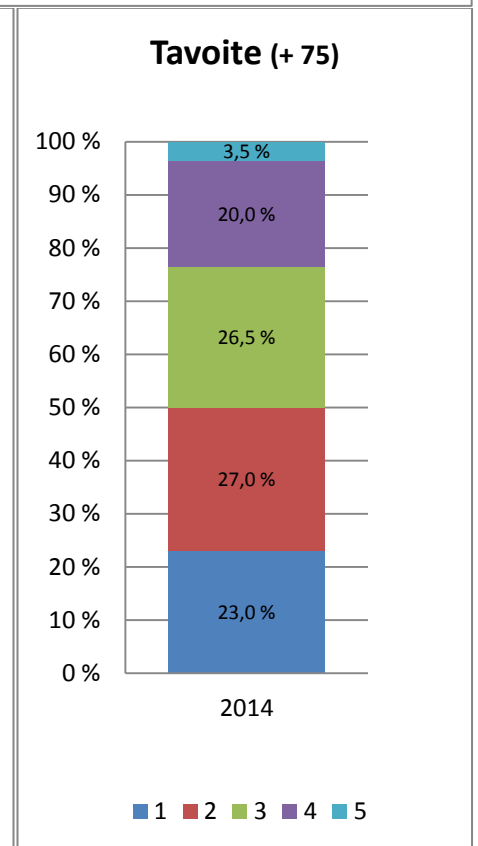
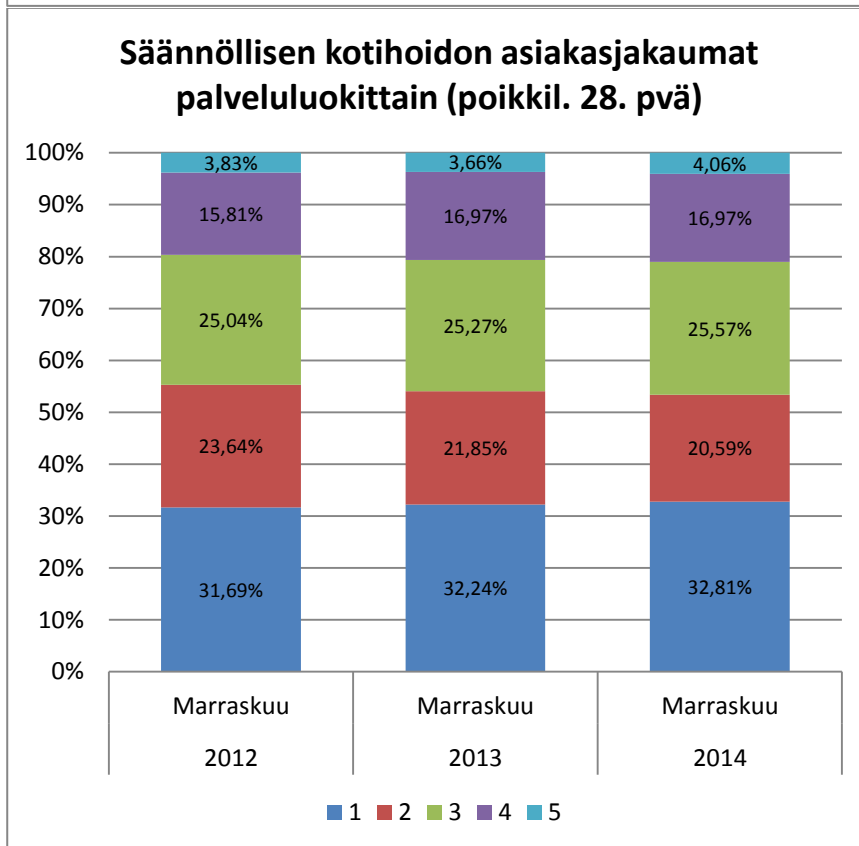
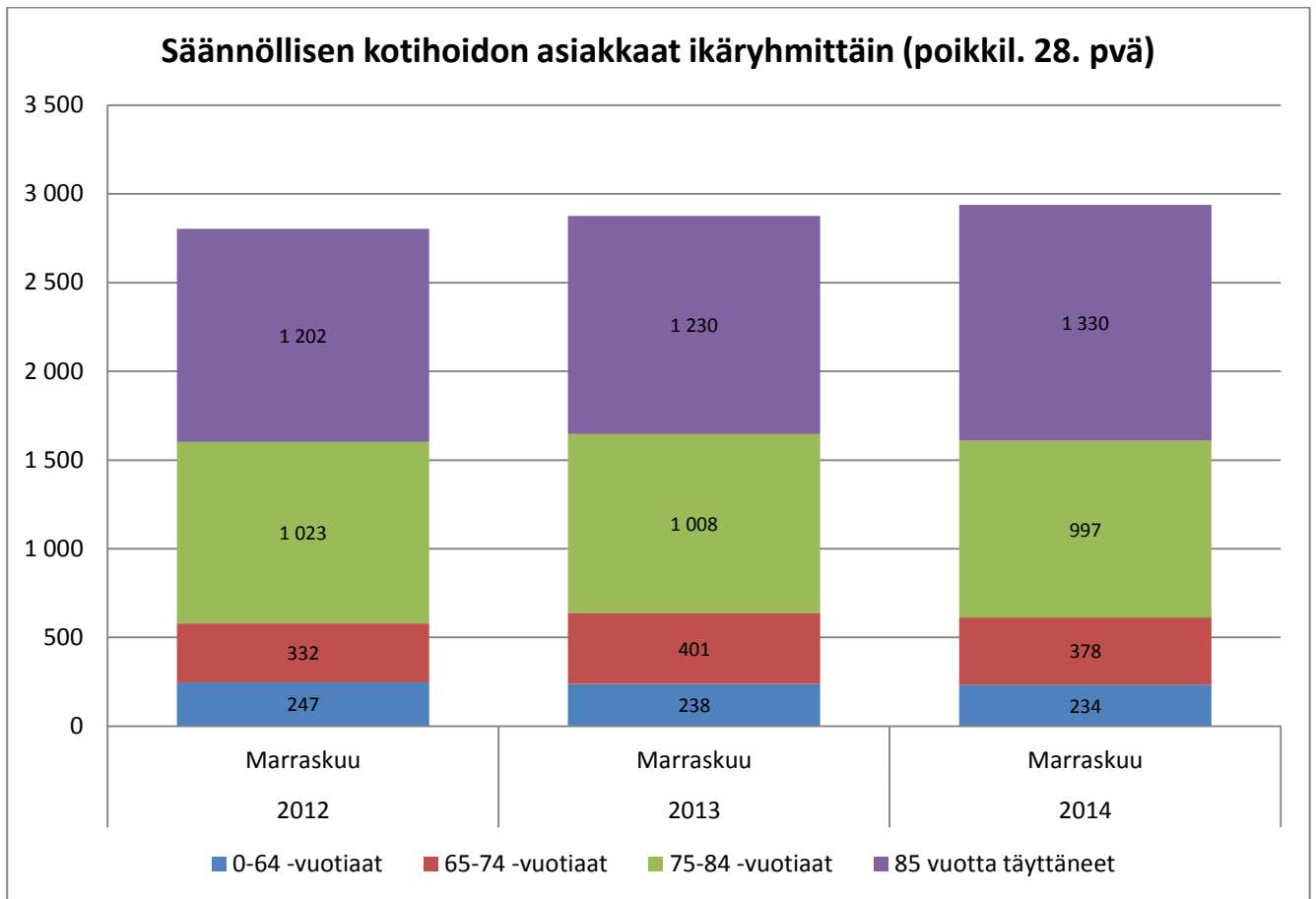
## VANHUSPALVELUT



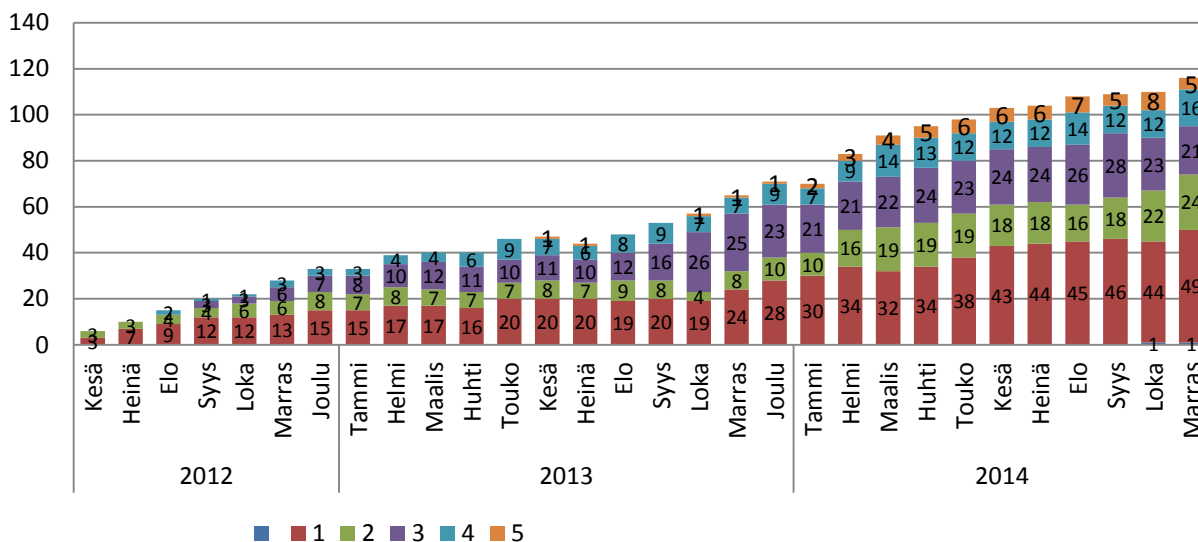


## Toiminta

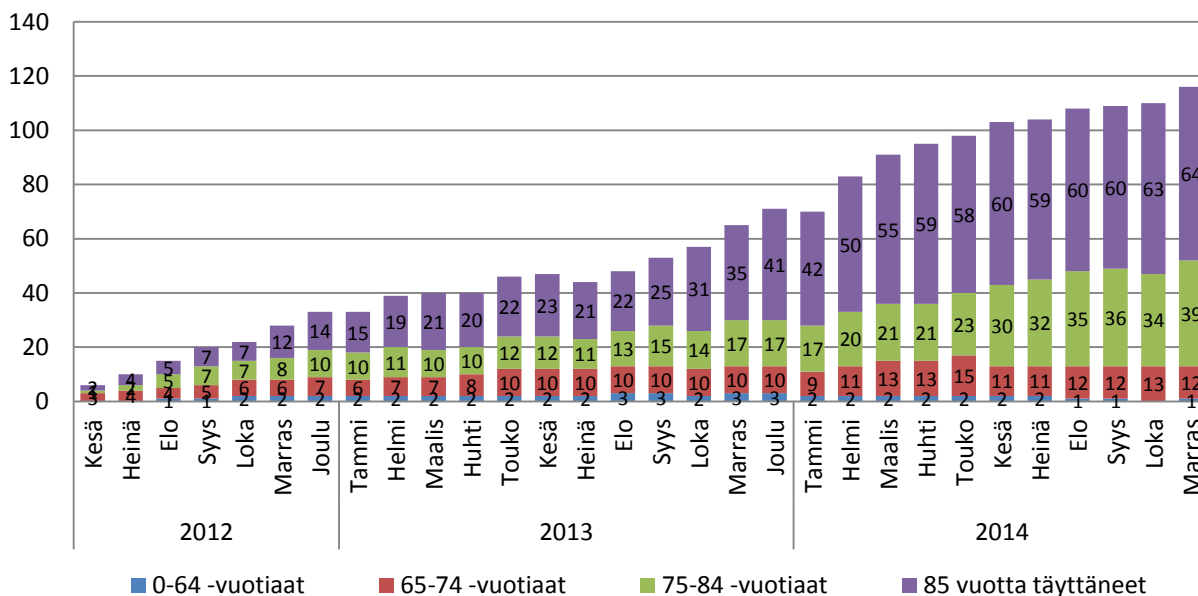


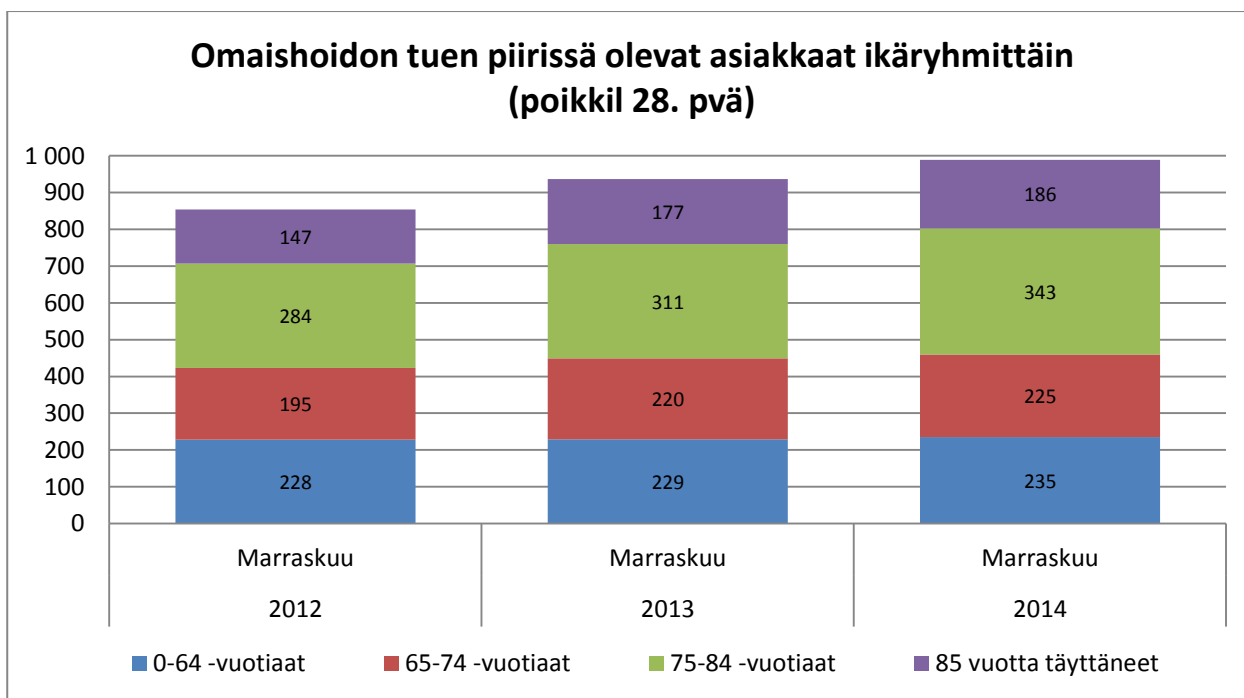
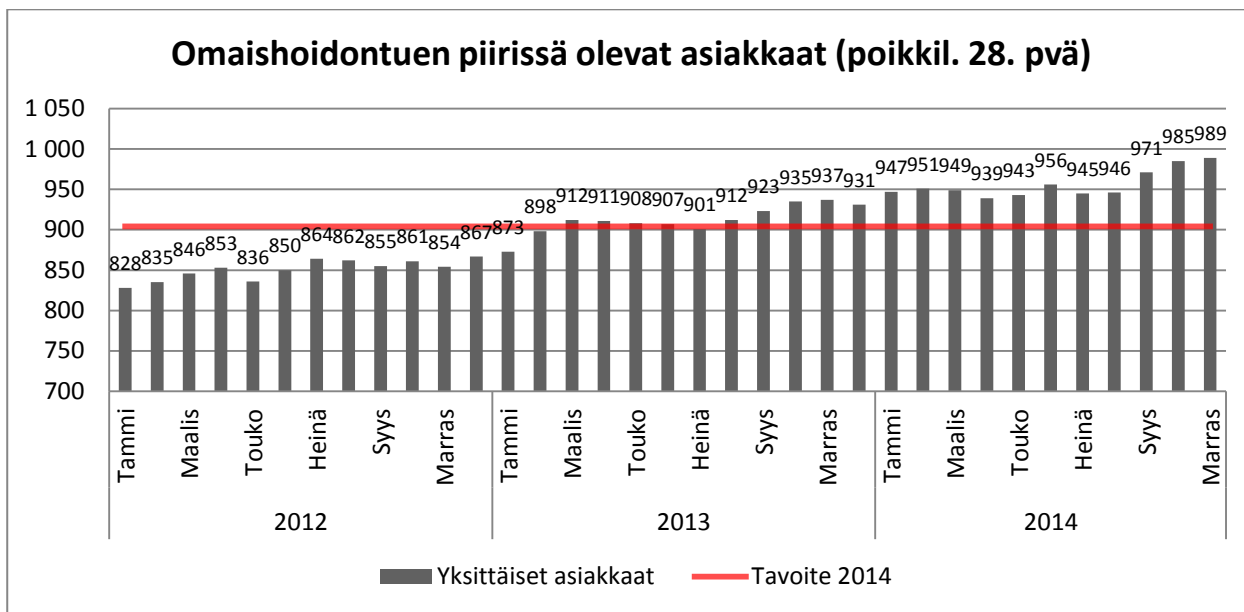


### Palveluseteliasiakkaat palveluluokittain (poikkil. 28. pvä)

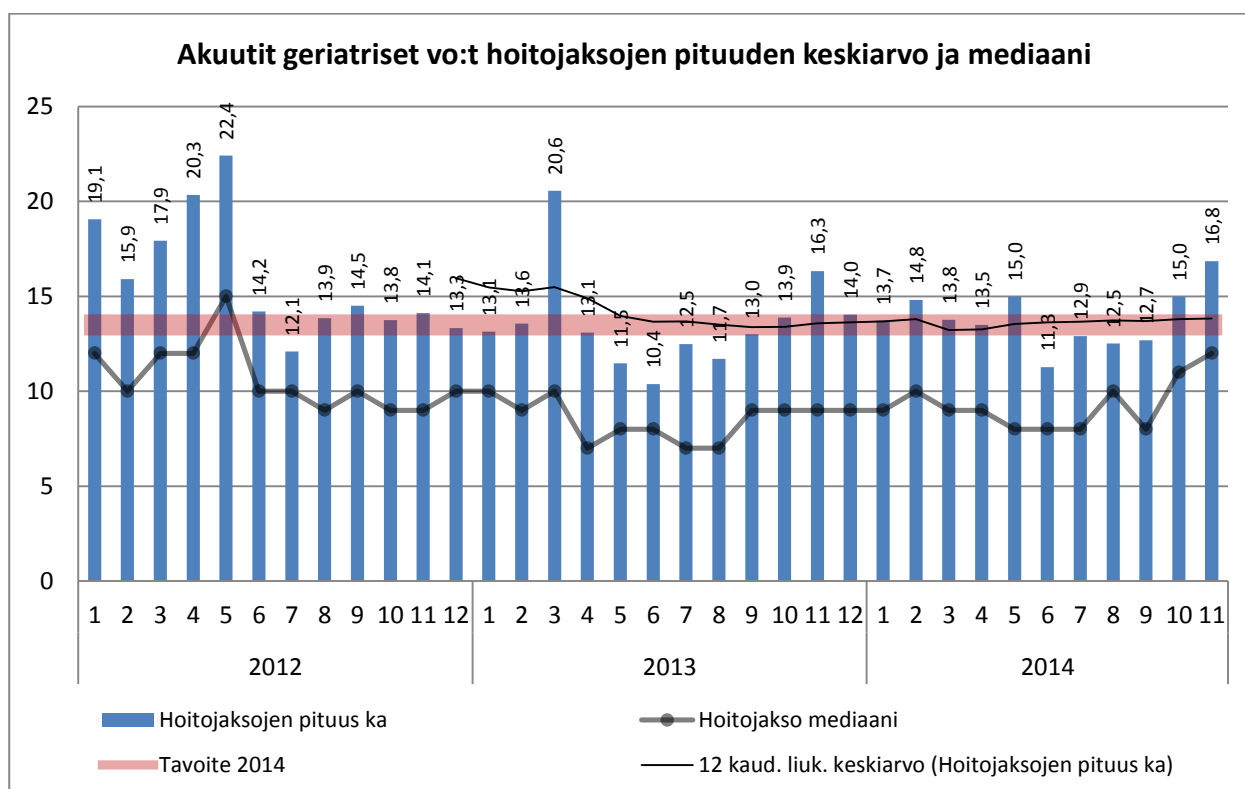
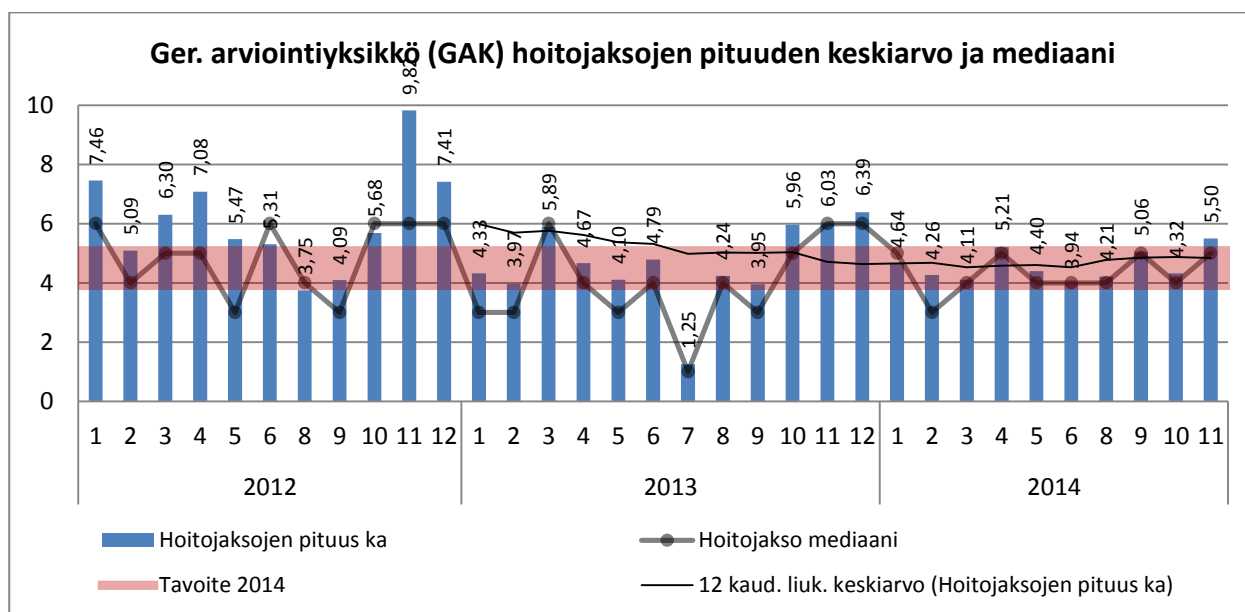


### Palveluseteliasiakkaat ikäryhmittäin (poikkil. 28. pvä)





## Geriatrinen sairaalahoito



## Ympäri vuorokautinen hoito

