

TURKU



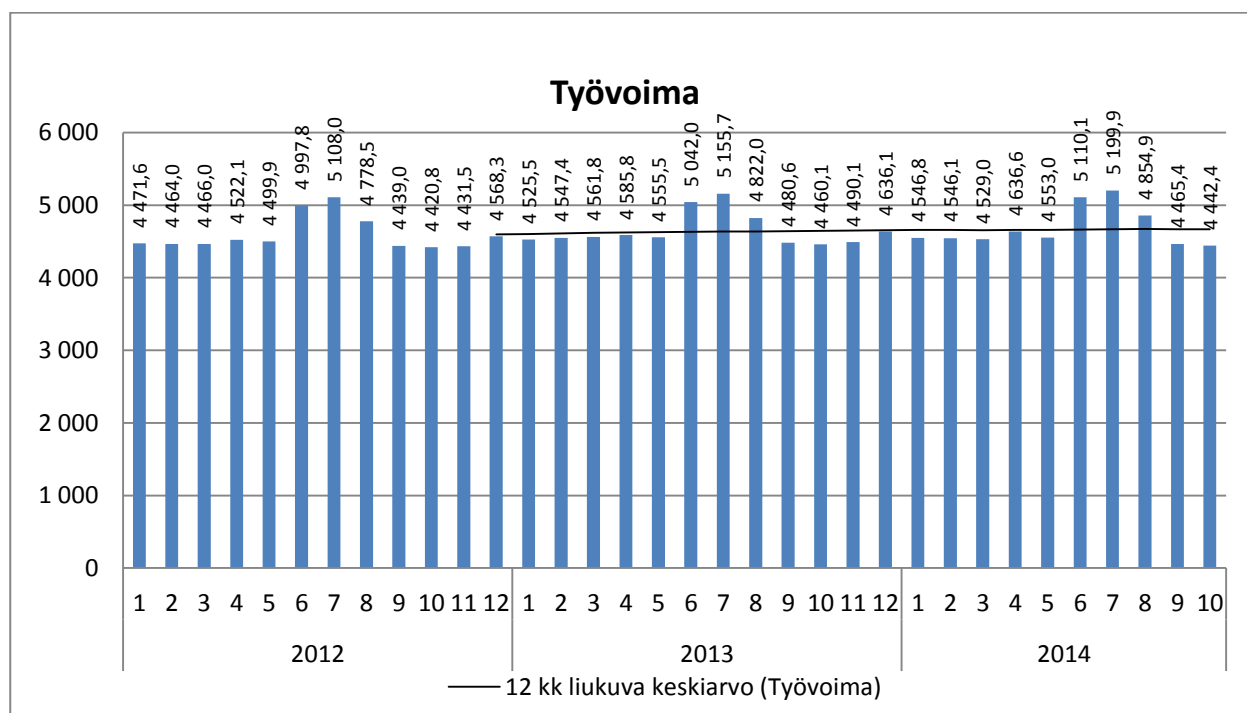
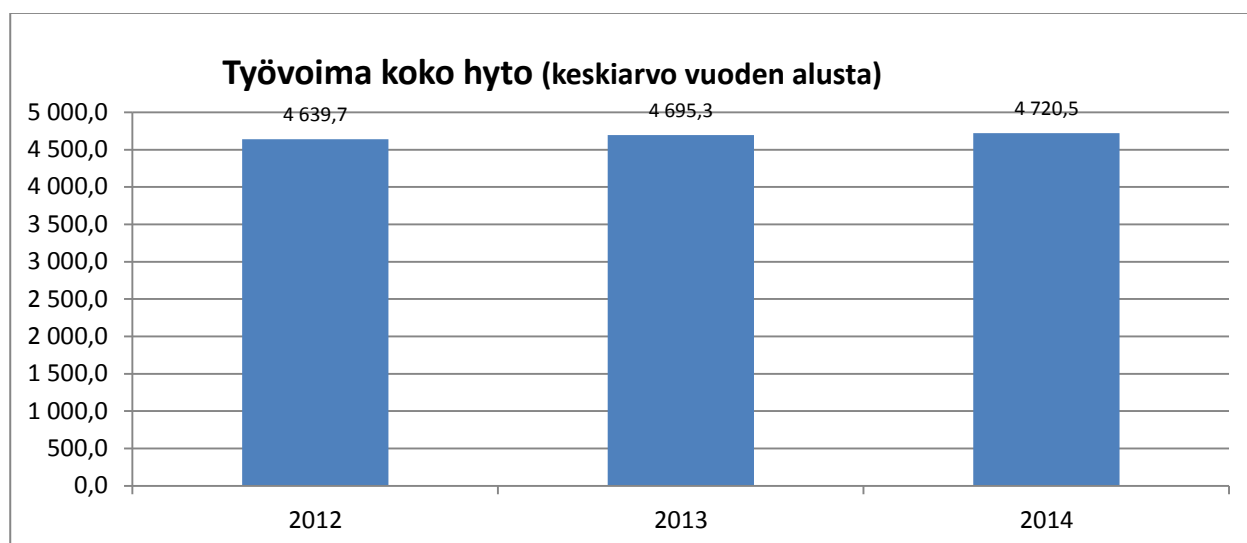
HYVINVOINTITOIMIALA

Kuukausiseuranta

Lokakuu

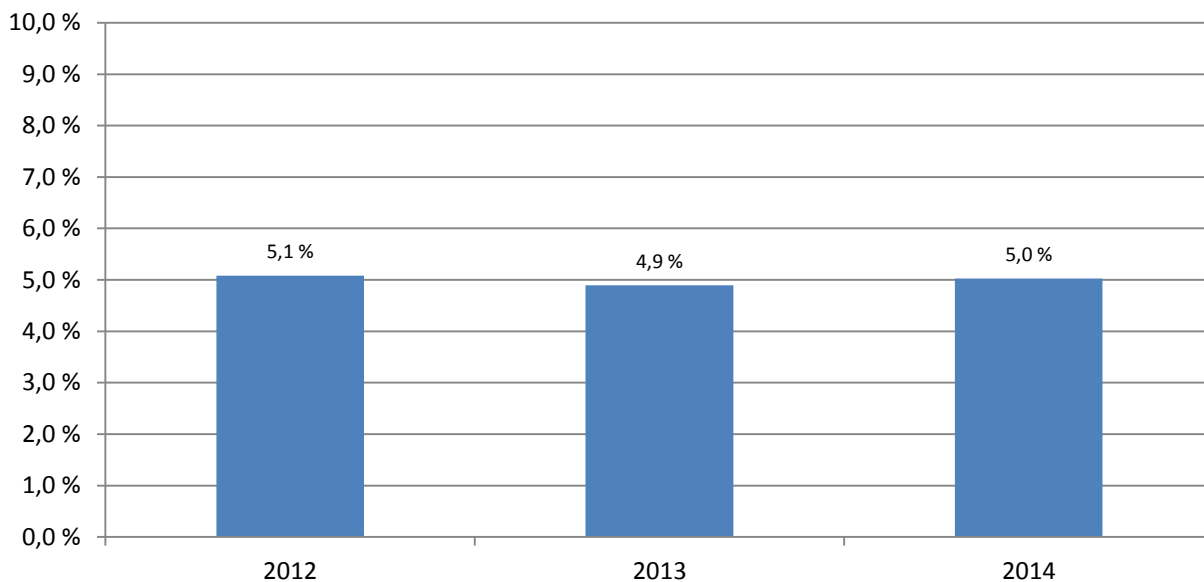
18.11.2014

HYVINVOINTITOIMIALA

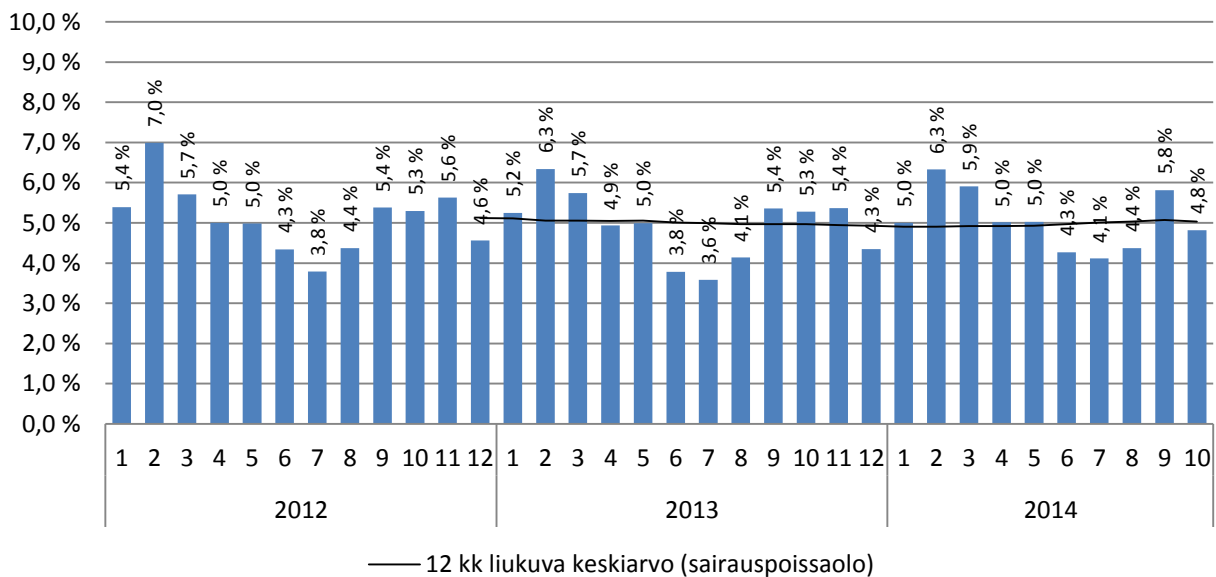


Huom! Vuoden 2012 organisaatiosta poistettu työterveyshuolto ja ympäristöterveydenhuolto. Keskiarvo vuoden alusta näyttää vertailun vastaavaan ajankohtaan muina vuosina. Henkilöstötiedot päivitetty 2.11.2014.

Sairauspoissaolo keskiarvo vuoden alusta

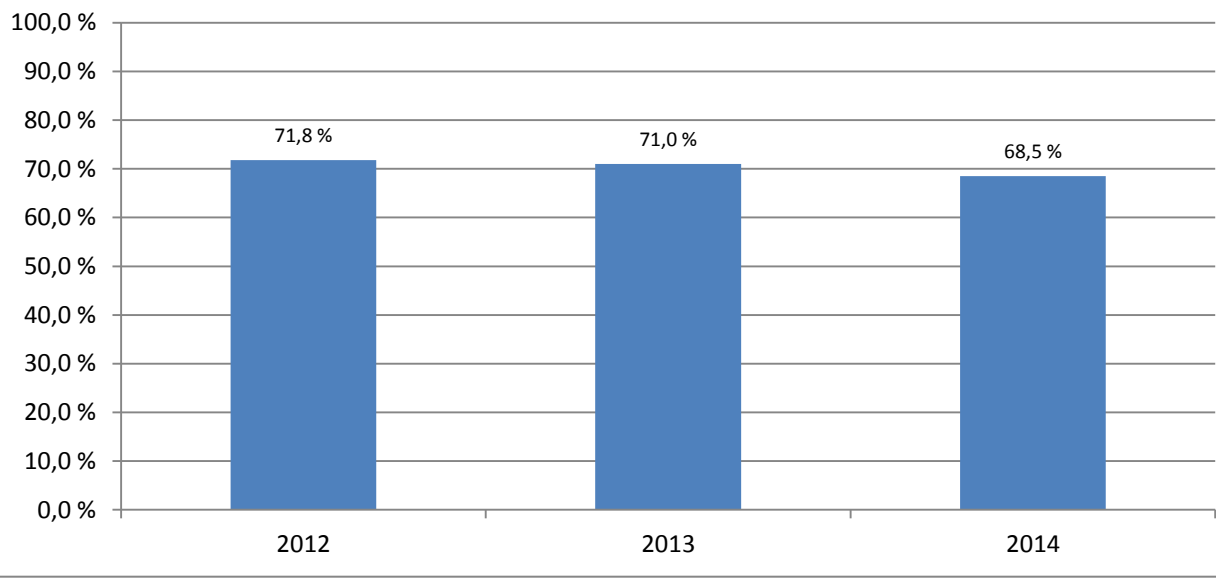


Sairauspoissaolo-%

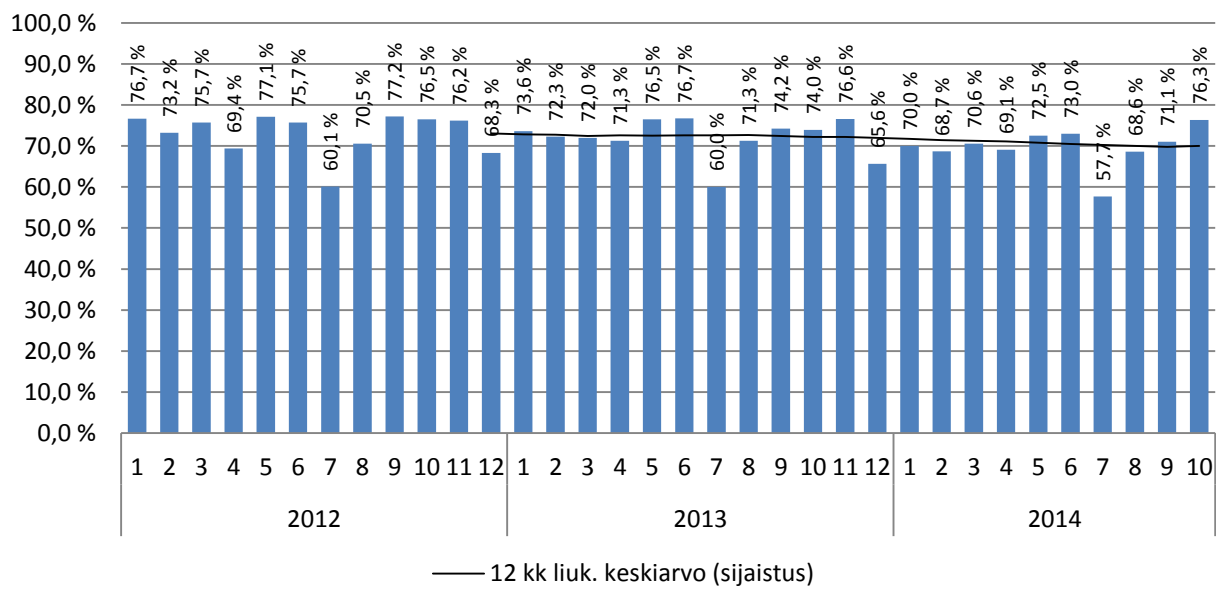


Huom! Vuoden 2012 organisaatiosta poistettu työterveyshuolto ja ympäristöterveydenhuolto. Keskiarvo vuoden alusta näyttää vertailun vastaavaan ajankohtaan muina vuosina. Henkilöstötiedot päivitetty 2.11.2014.

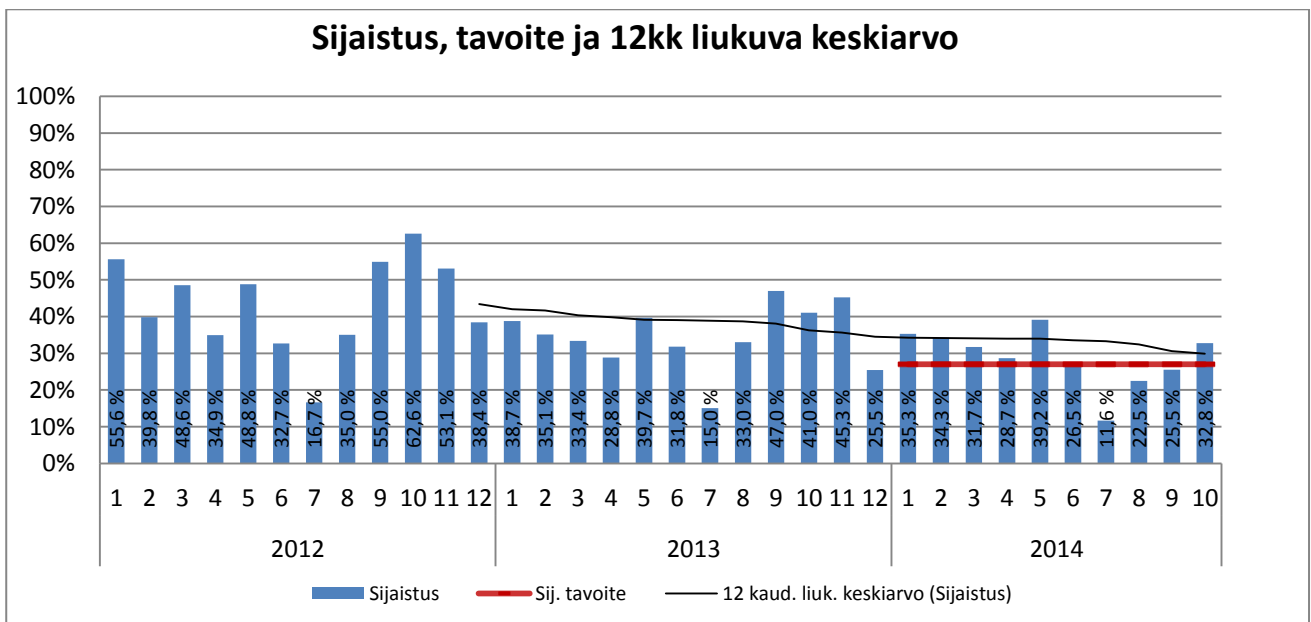
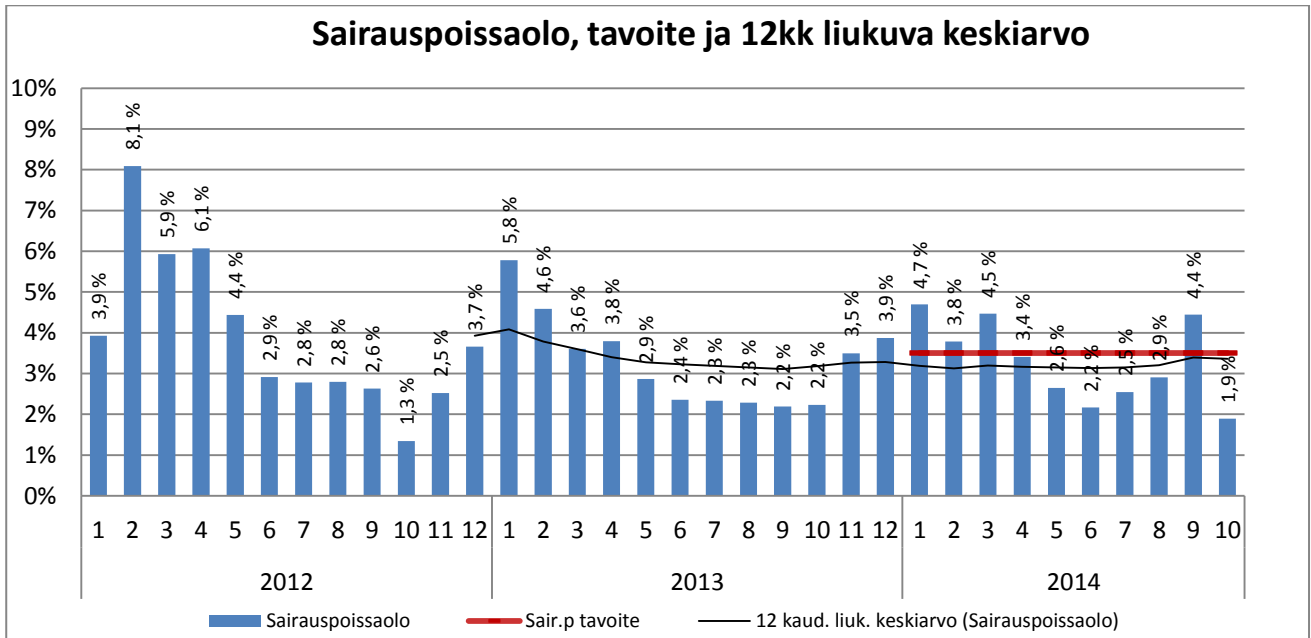
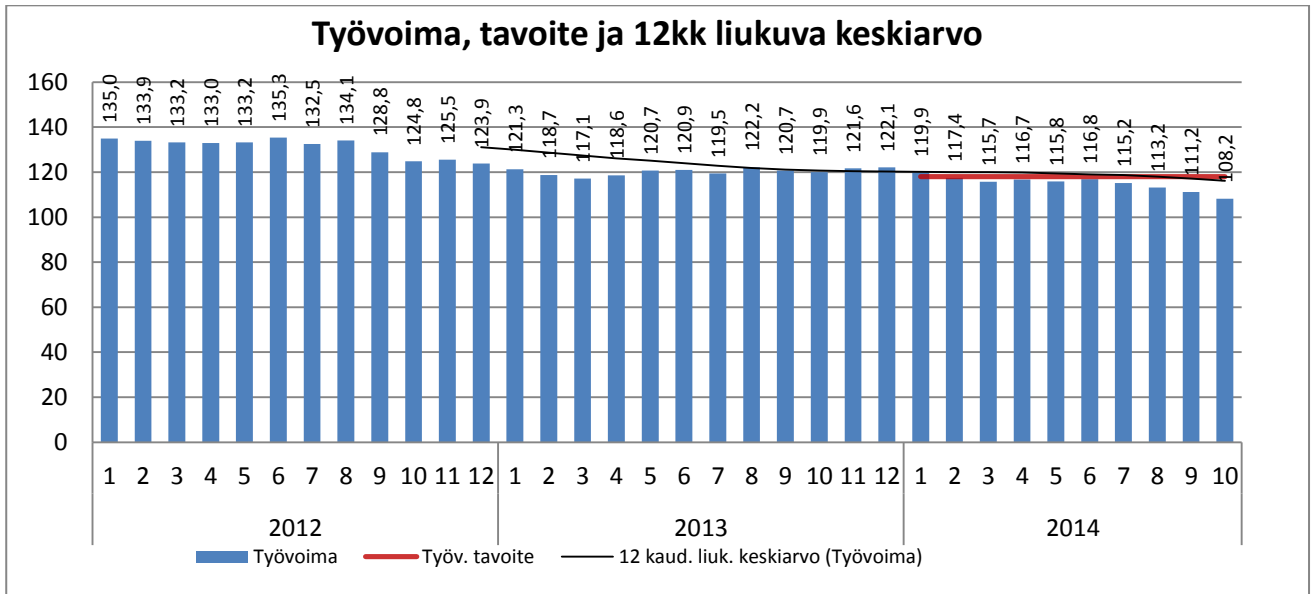
Sijaistus-% keskiarvo vuoden alusta



Sijaistus-% kuukausittain

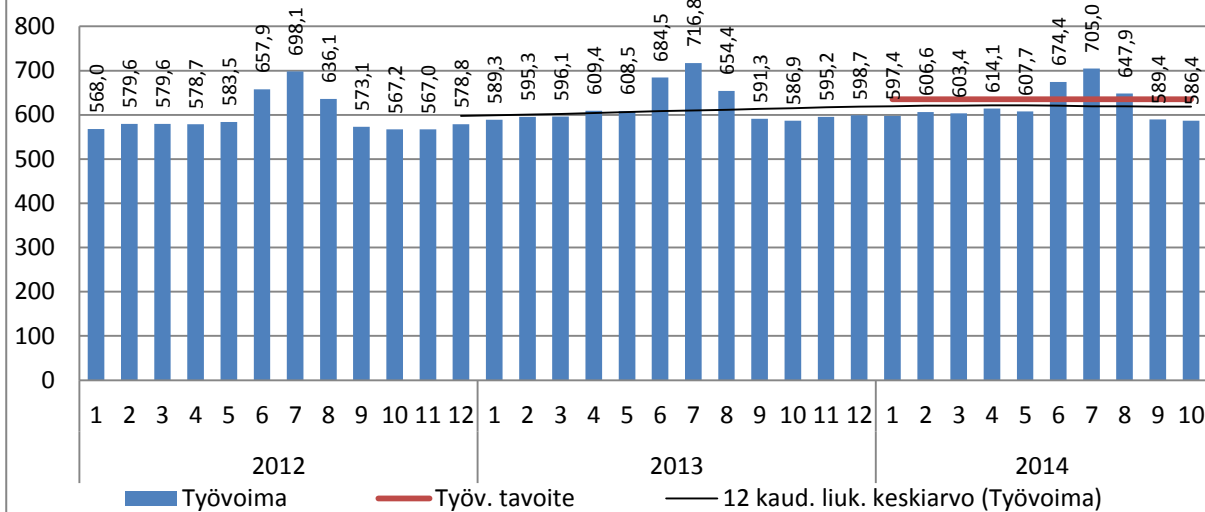


Huom! Vuoden 2012 organisaatiosta poistettu työterveyshuolto ja ympäristöterveydenhuolto. Keskiarvo vuoden alusta näyttää vertailun vastaavaan ajankohtaan muina vuosina. Henkilöstötiedot päivitetty 2.11.2014.

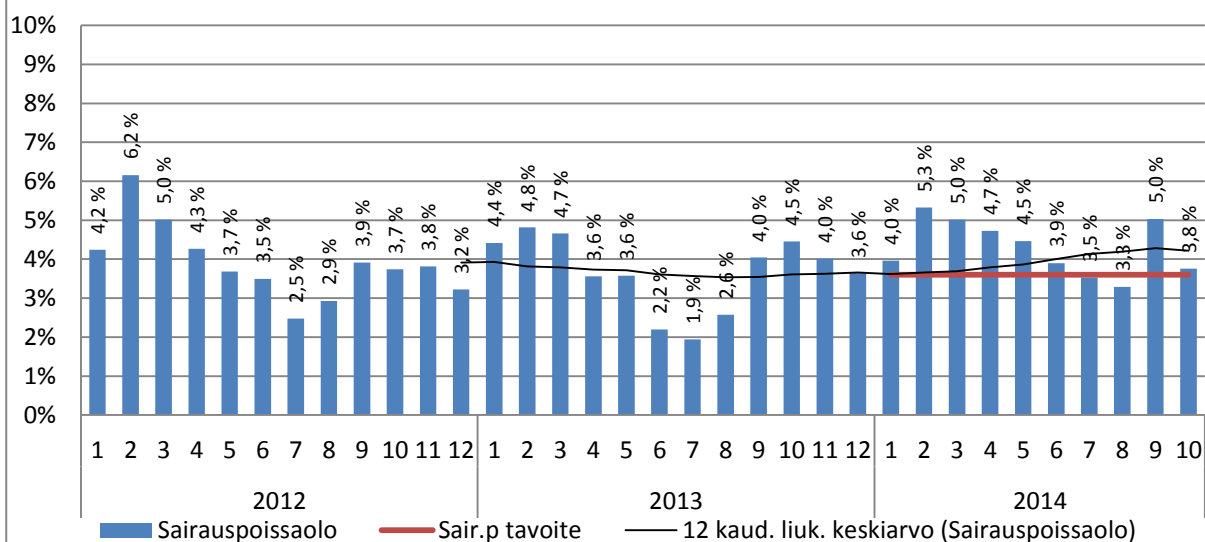


SOSIAALITYÖ

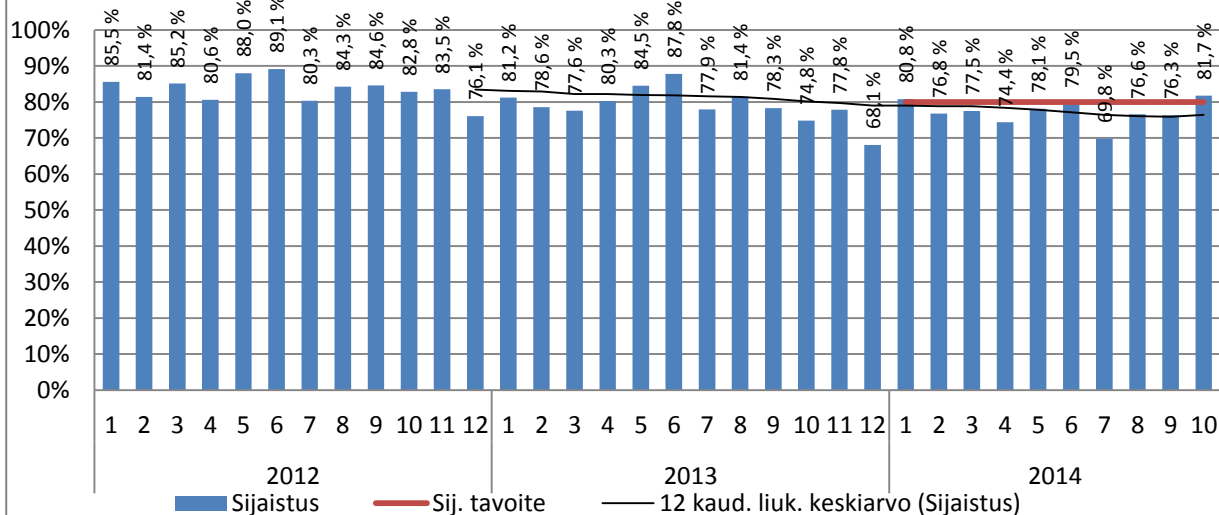
Työvoima, tavoite ja 12kk liukuva keskiarvo



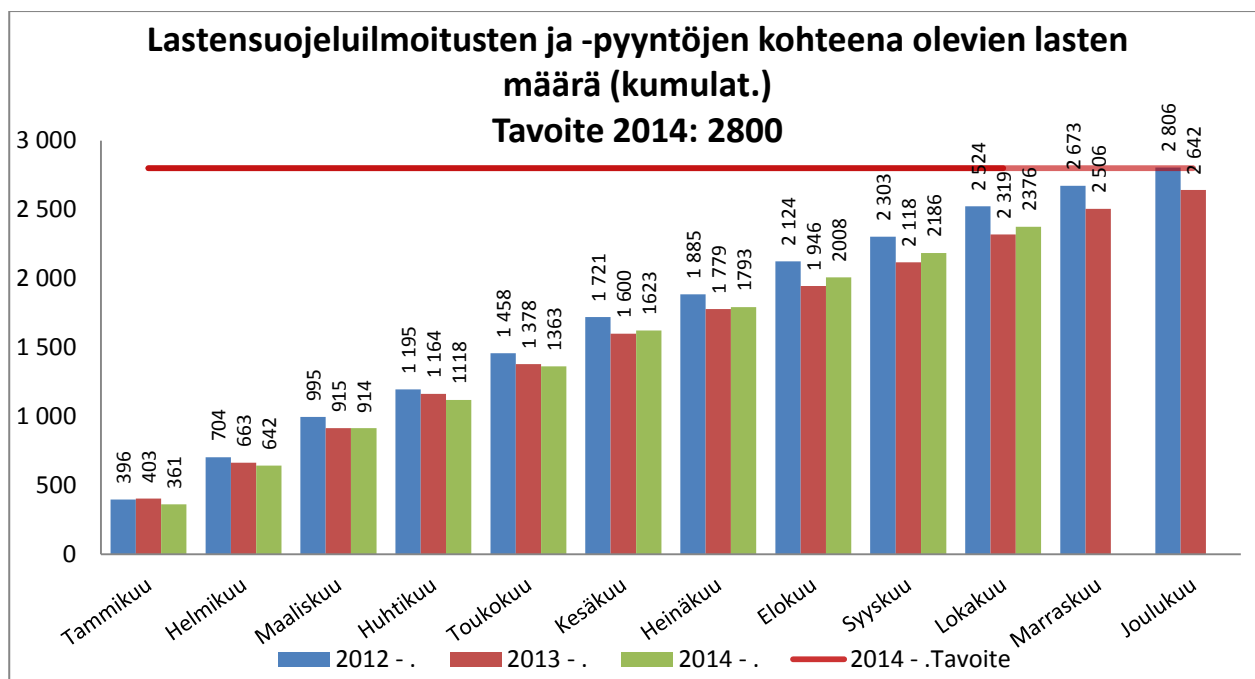
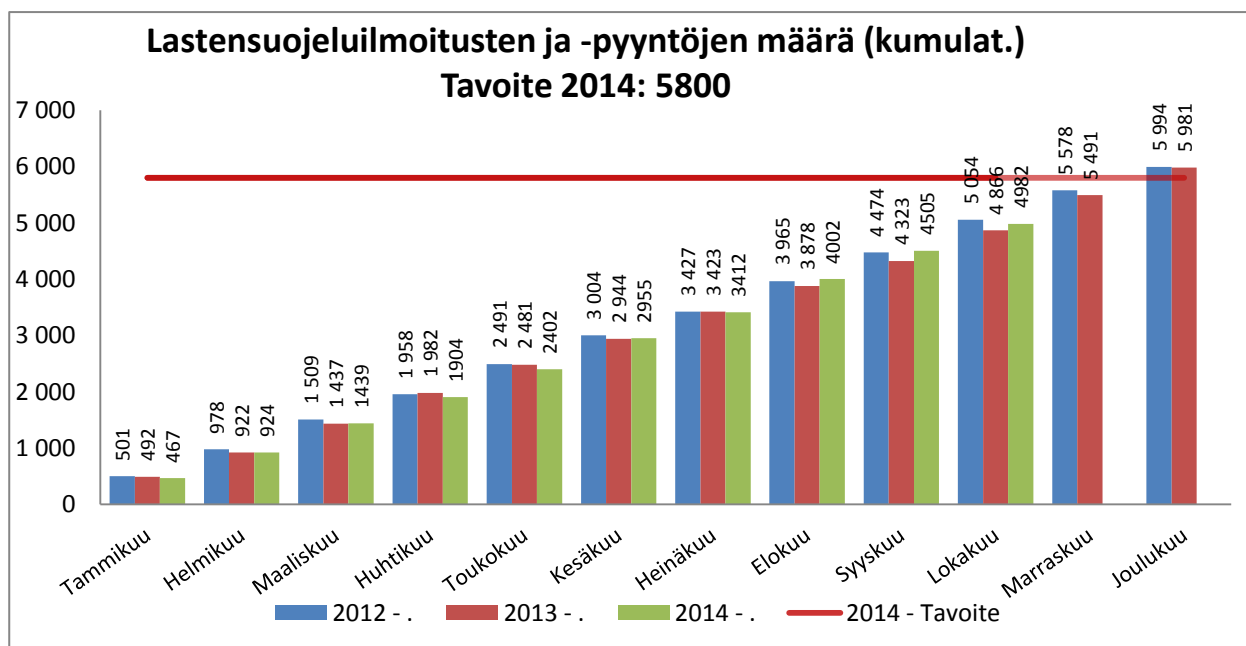
Sairauspoissaolo, tavoite ja 12kk liukuva keskiarvo

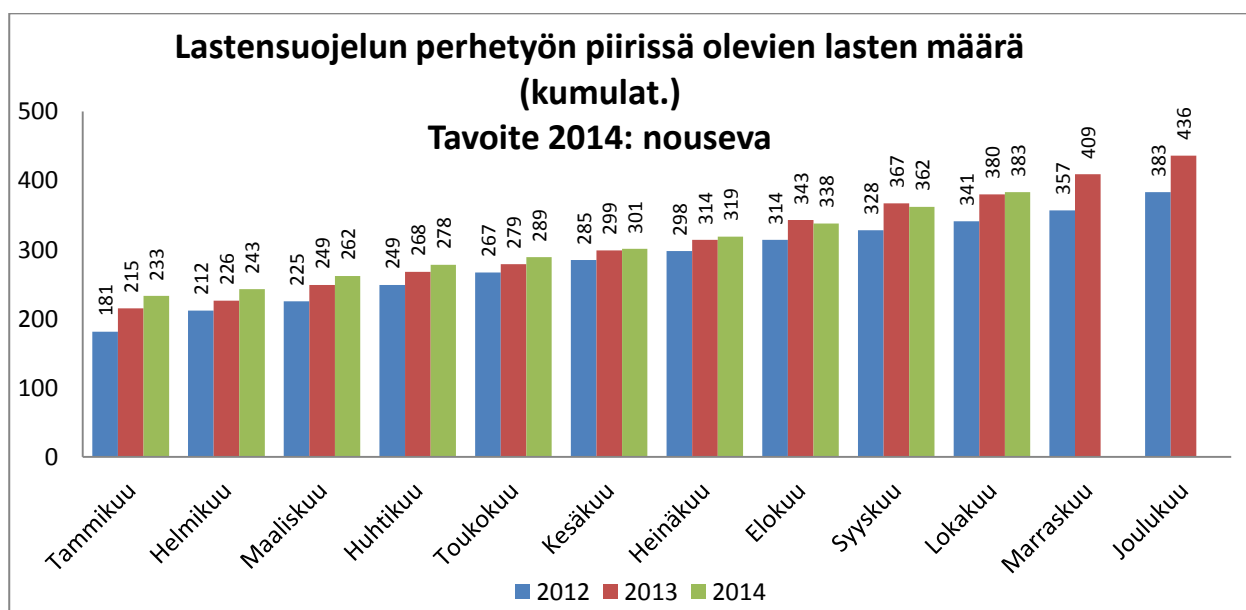
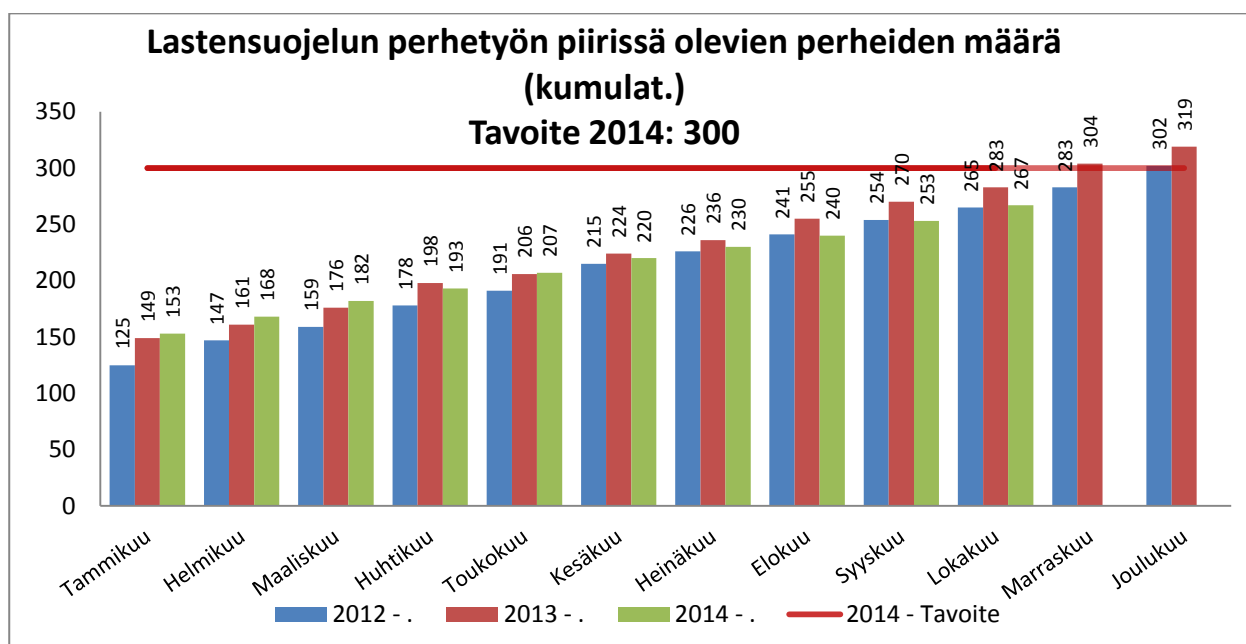
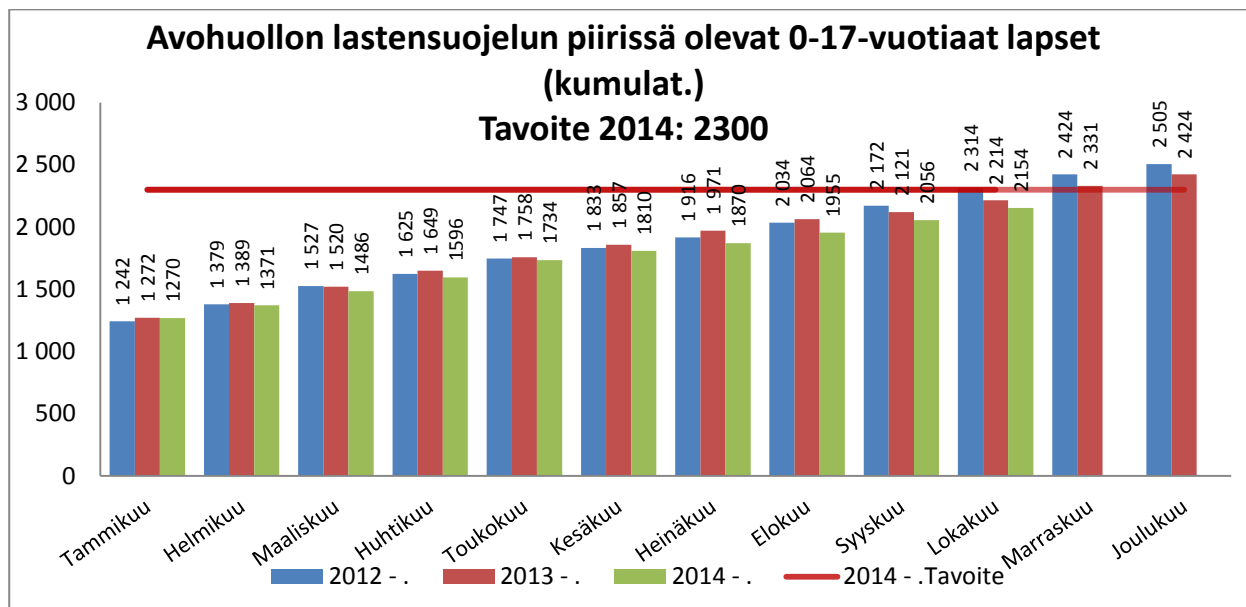


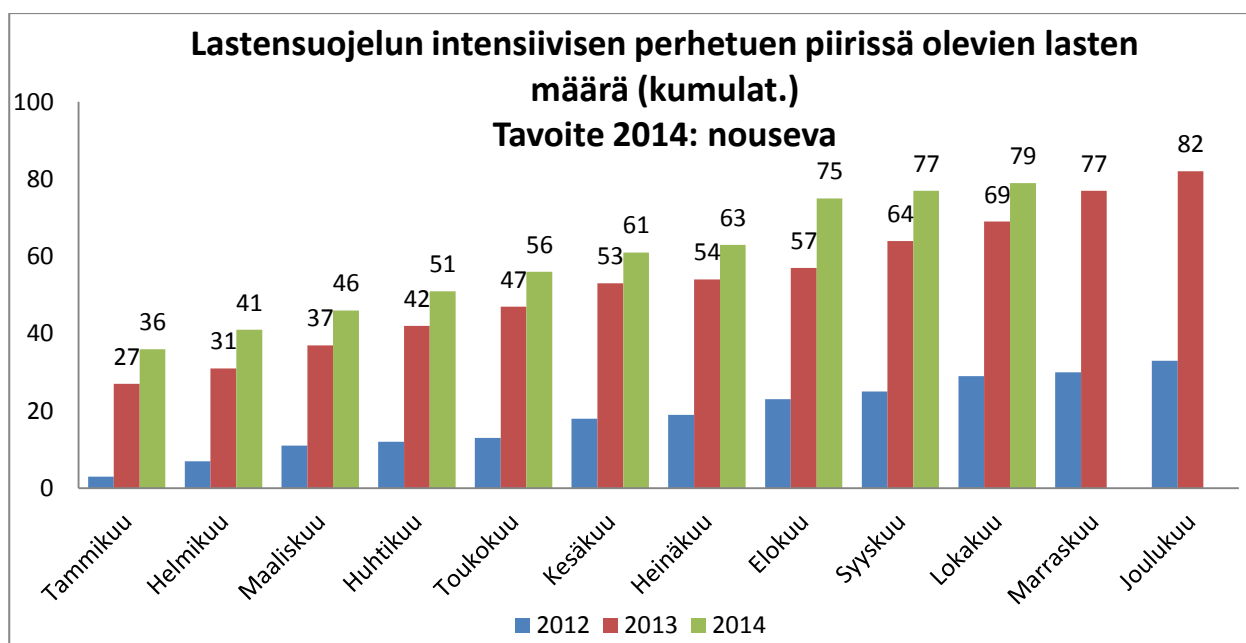
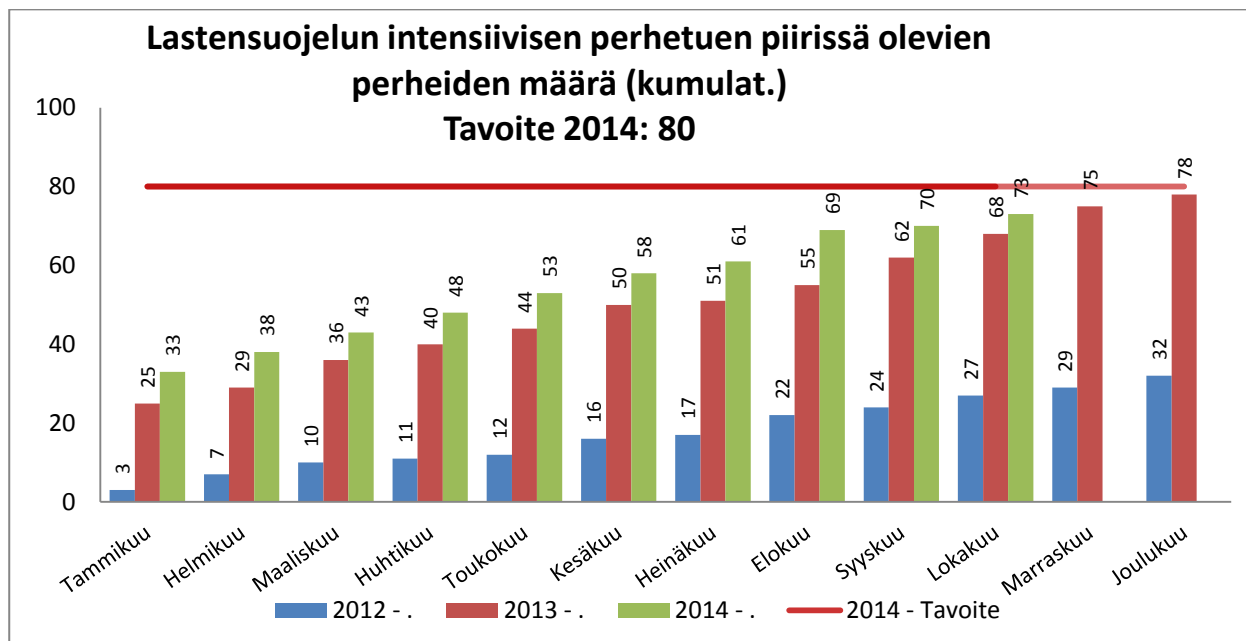
Sijaistus, tavoite ja 12kk liukuva keskiarvo



Avohuollon sosiaalityö

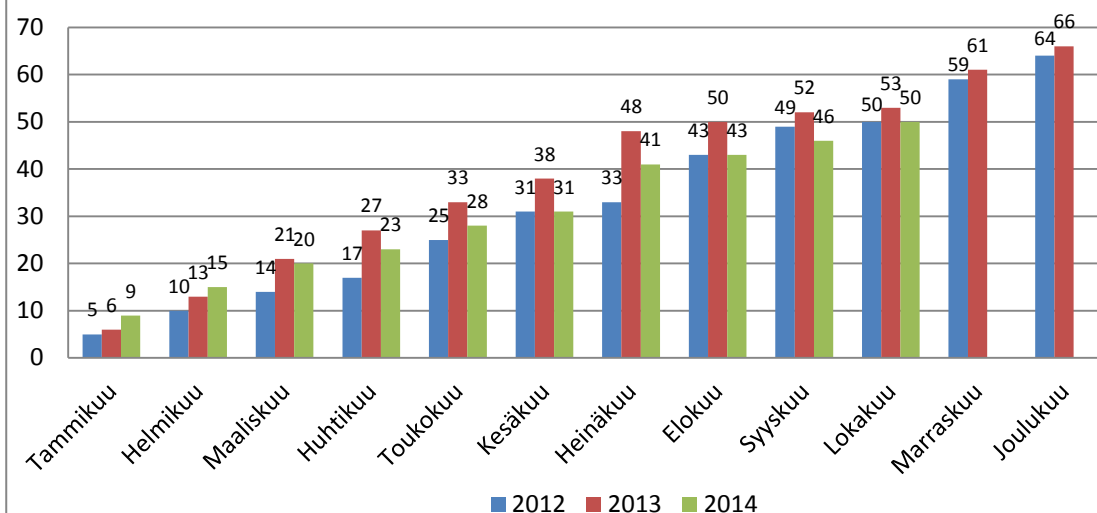




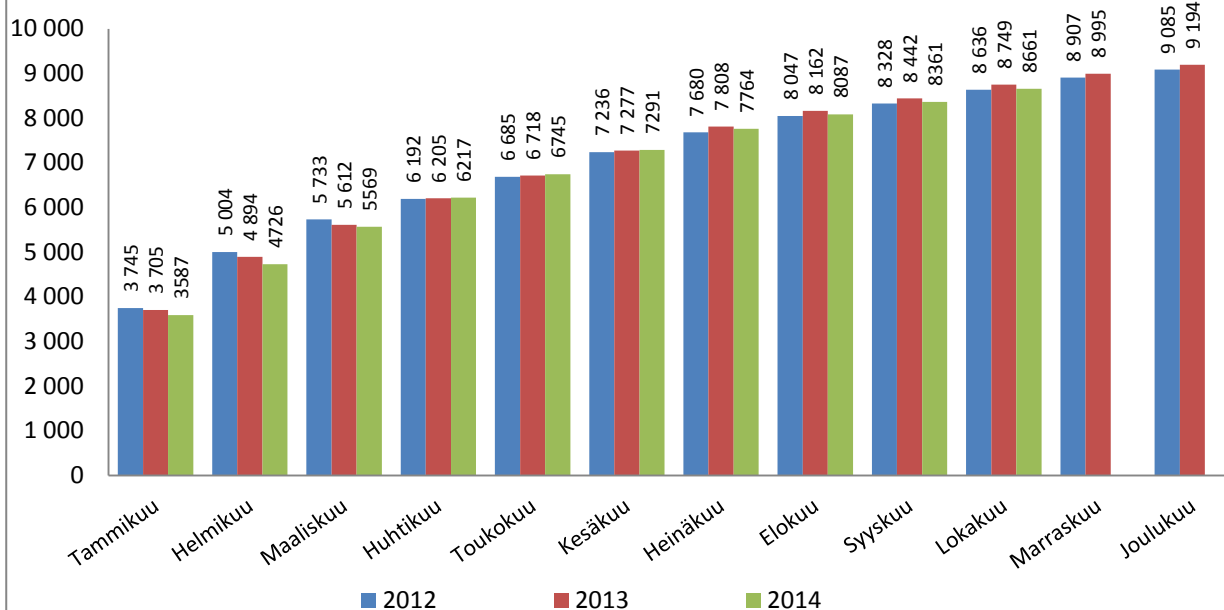


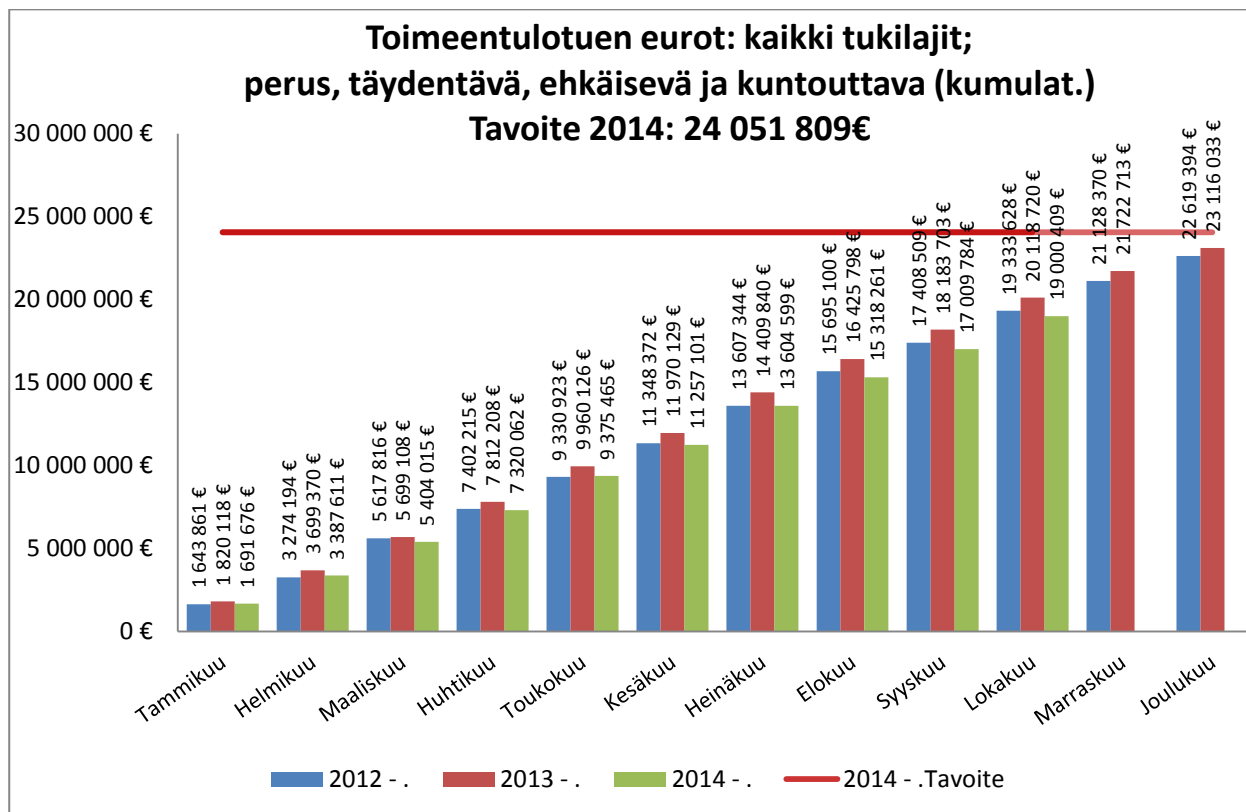
Uusien huostaanotettujen lasten määrä (kumulat.)

Tavoite 2014: laskeva

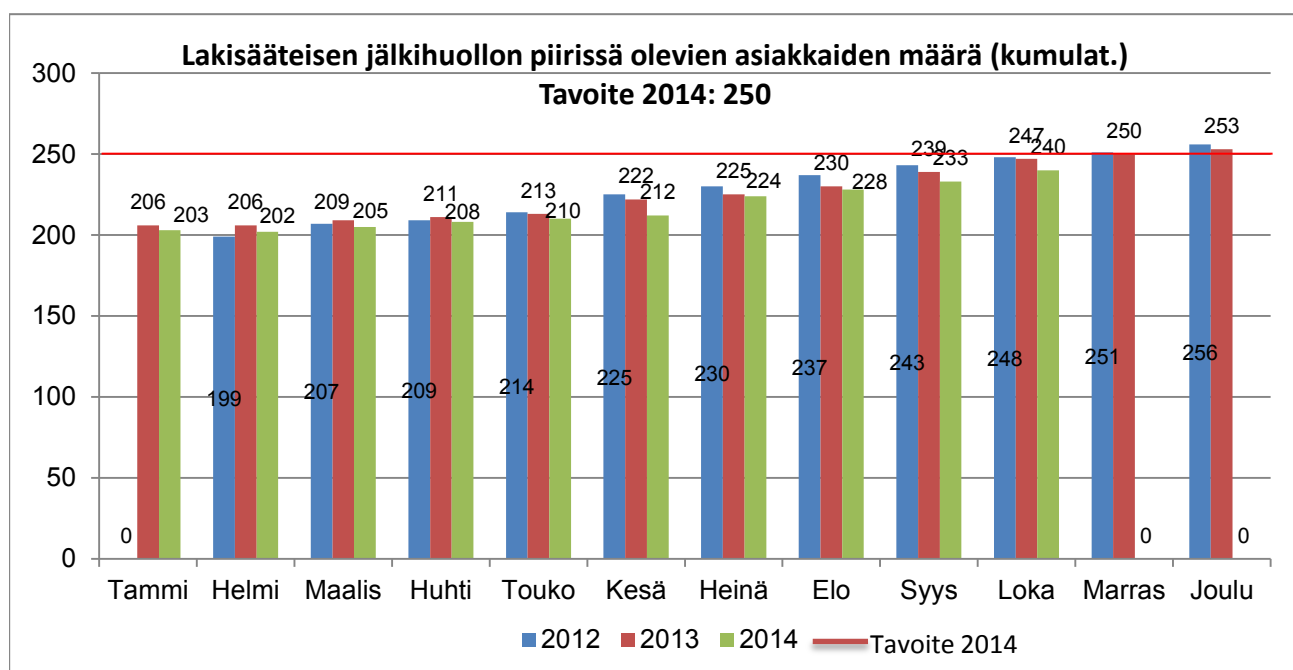
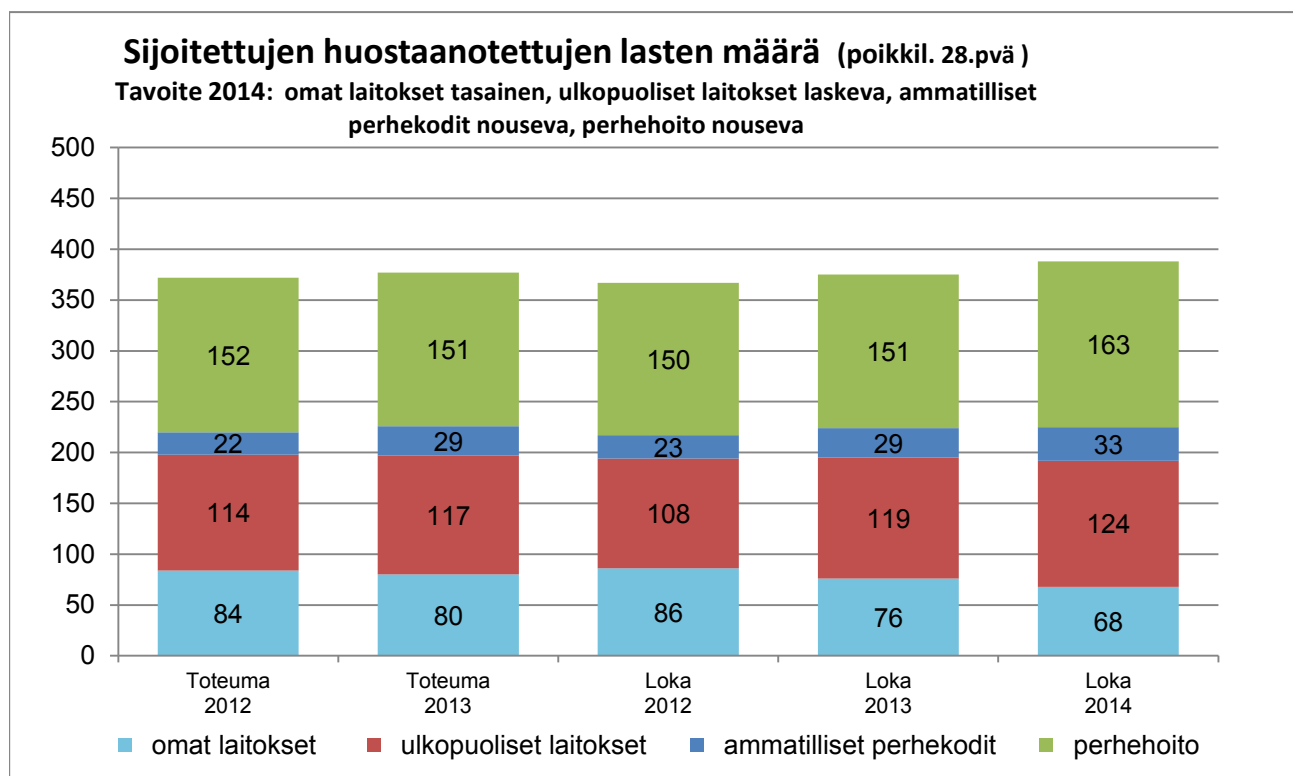


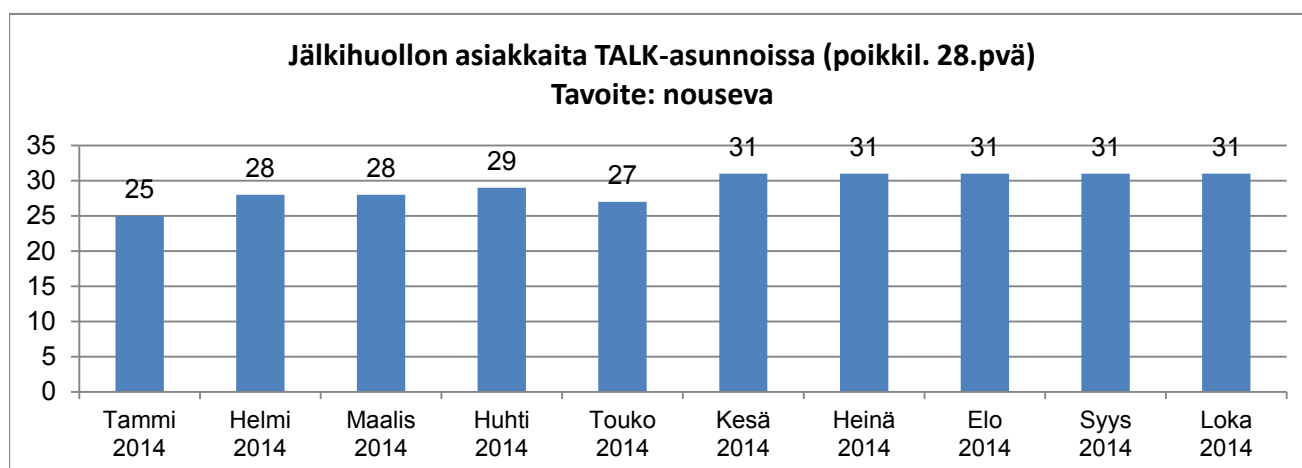
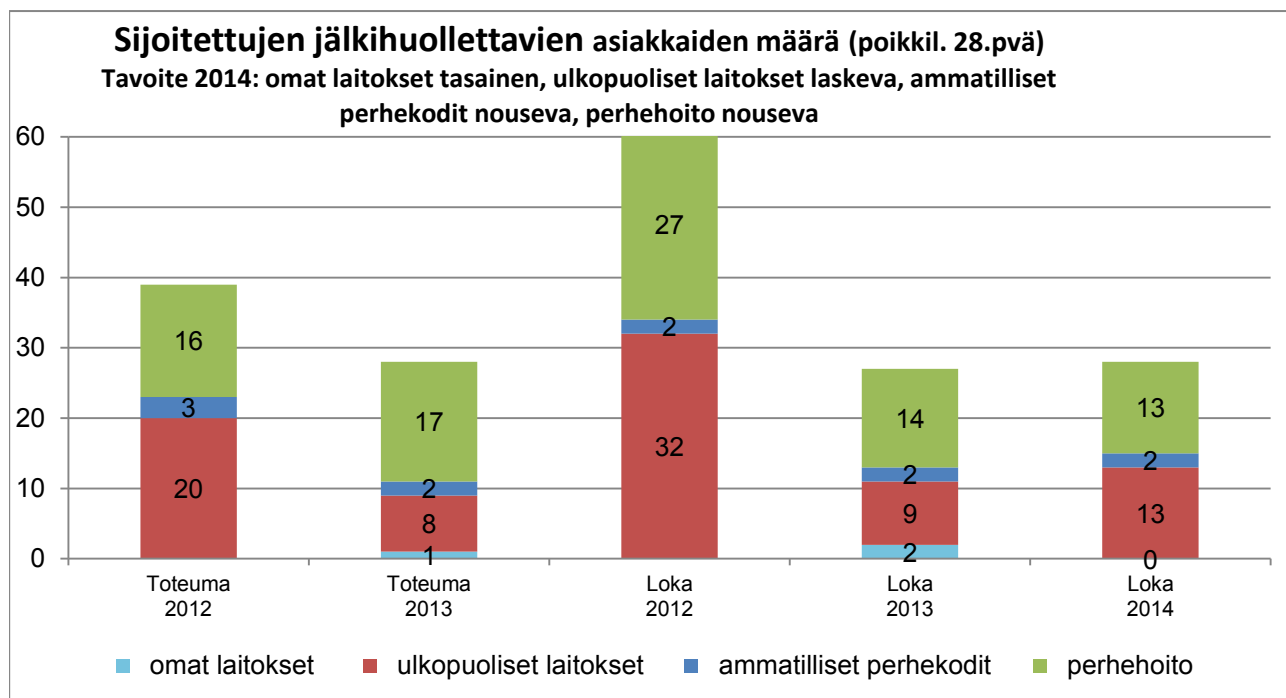
Toimentulotukea saavien kotitalouksien määrä (kumulat.)



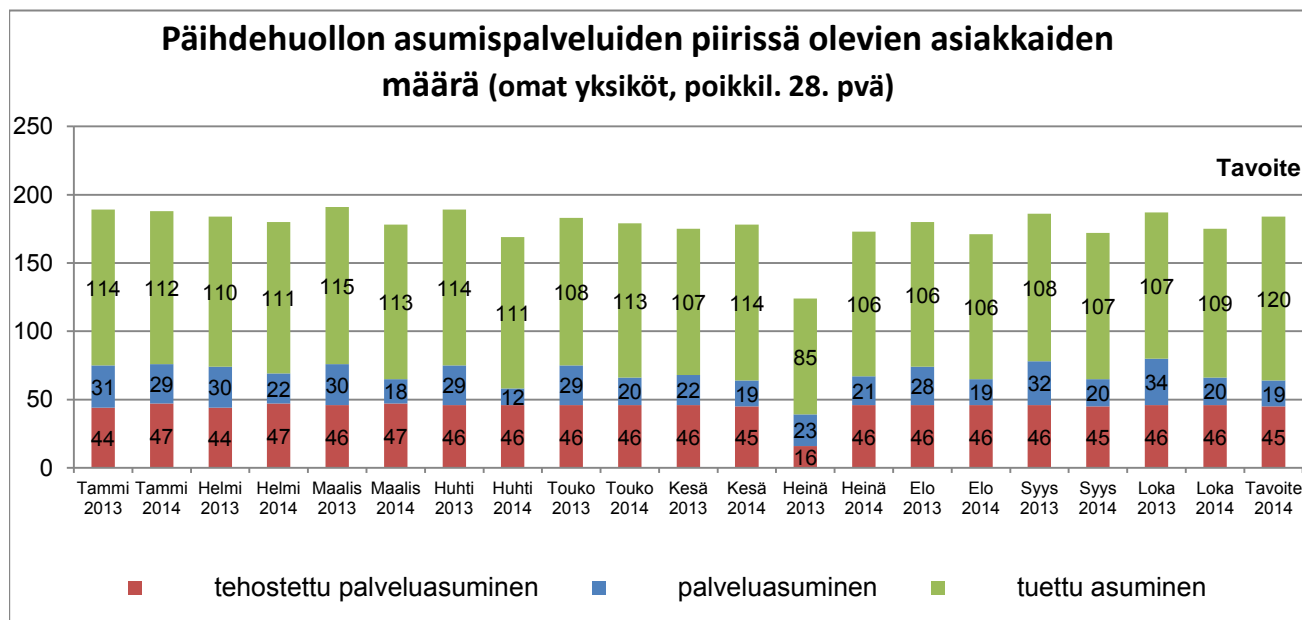
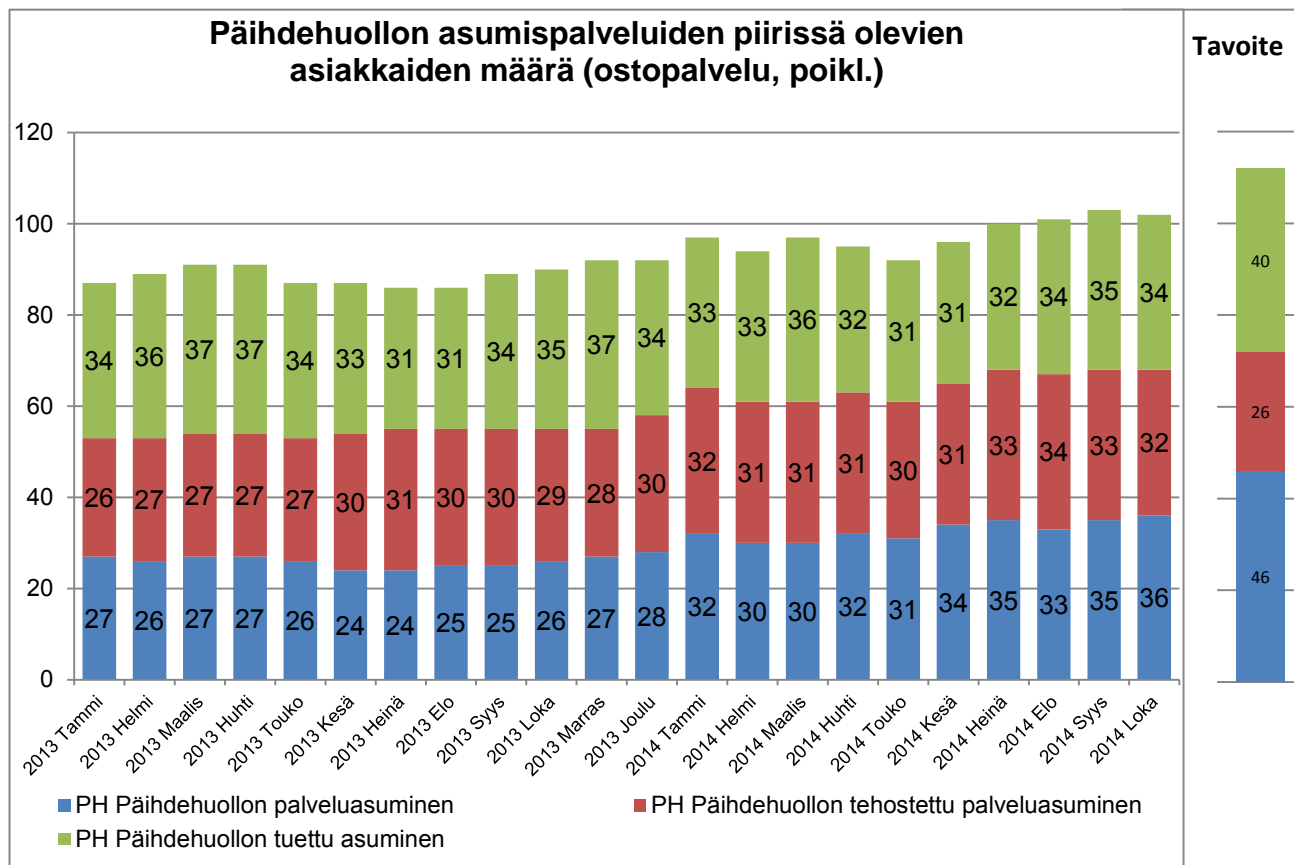


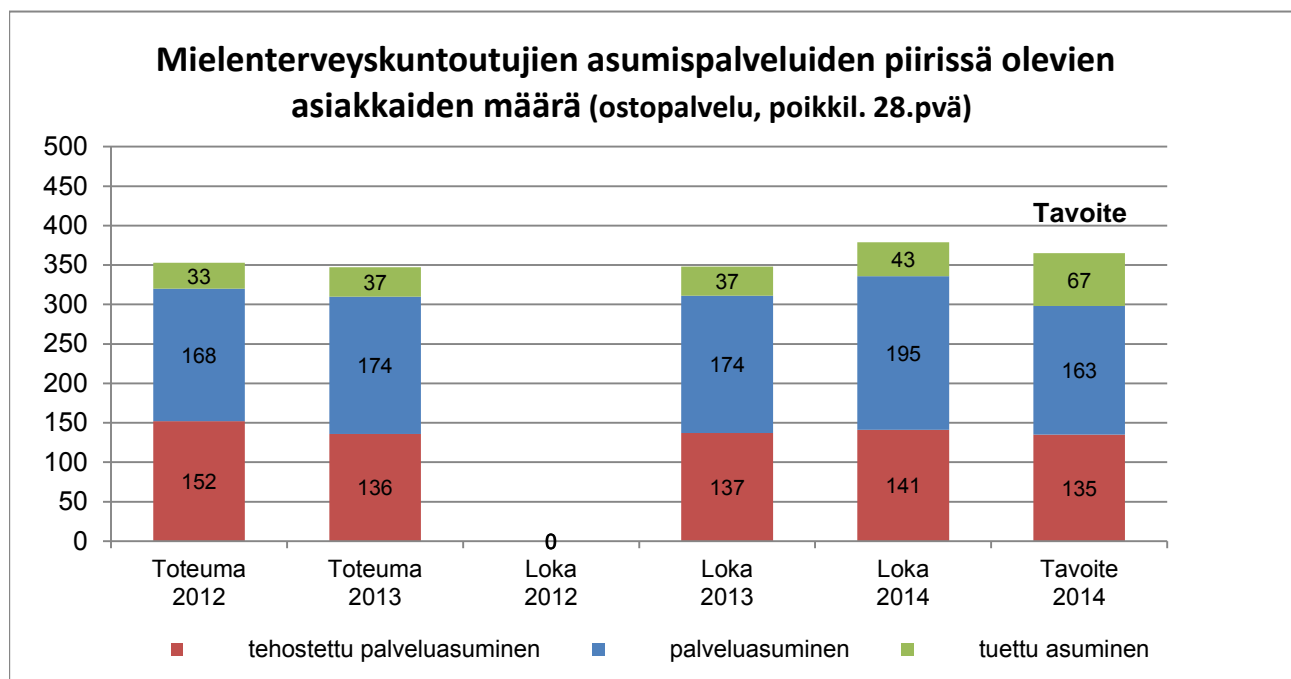
Sijaishuollon sosiaalityö



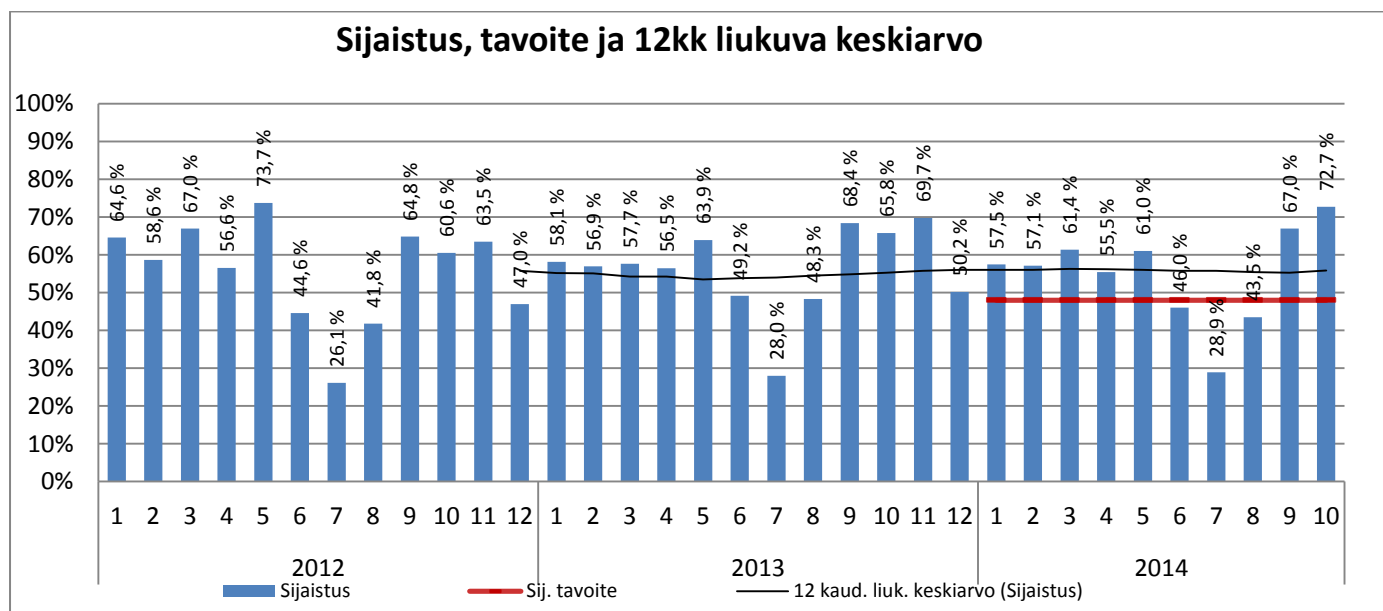
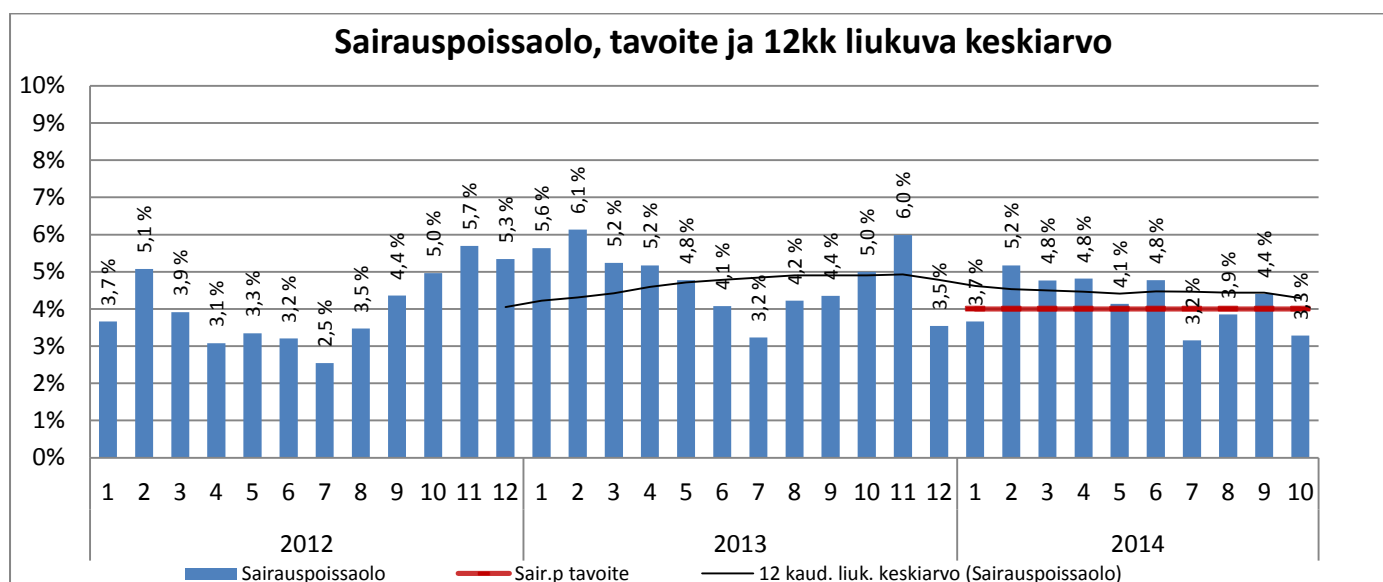
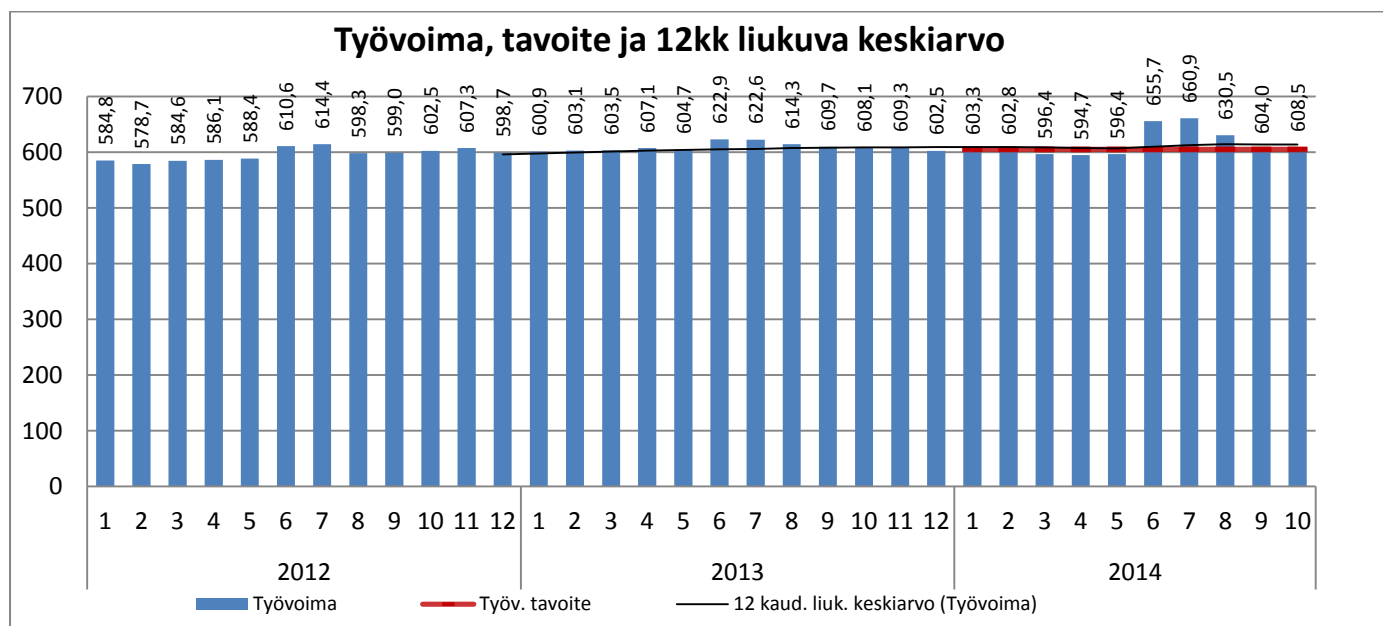


Sosiaalityön erityispalvelut

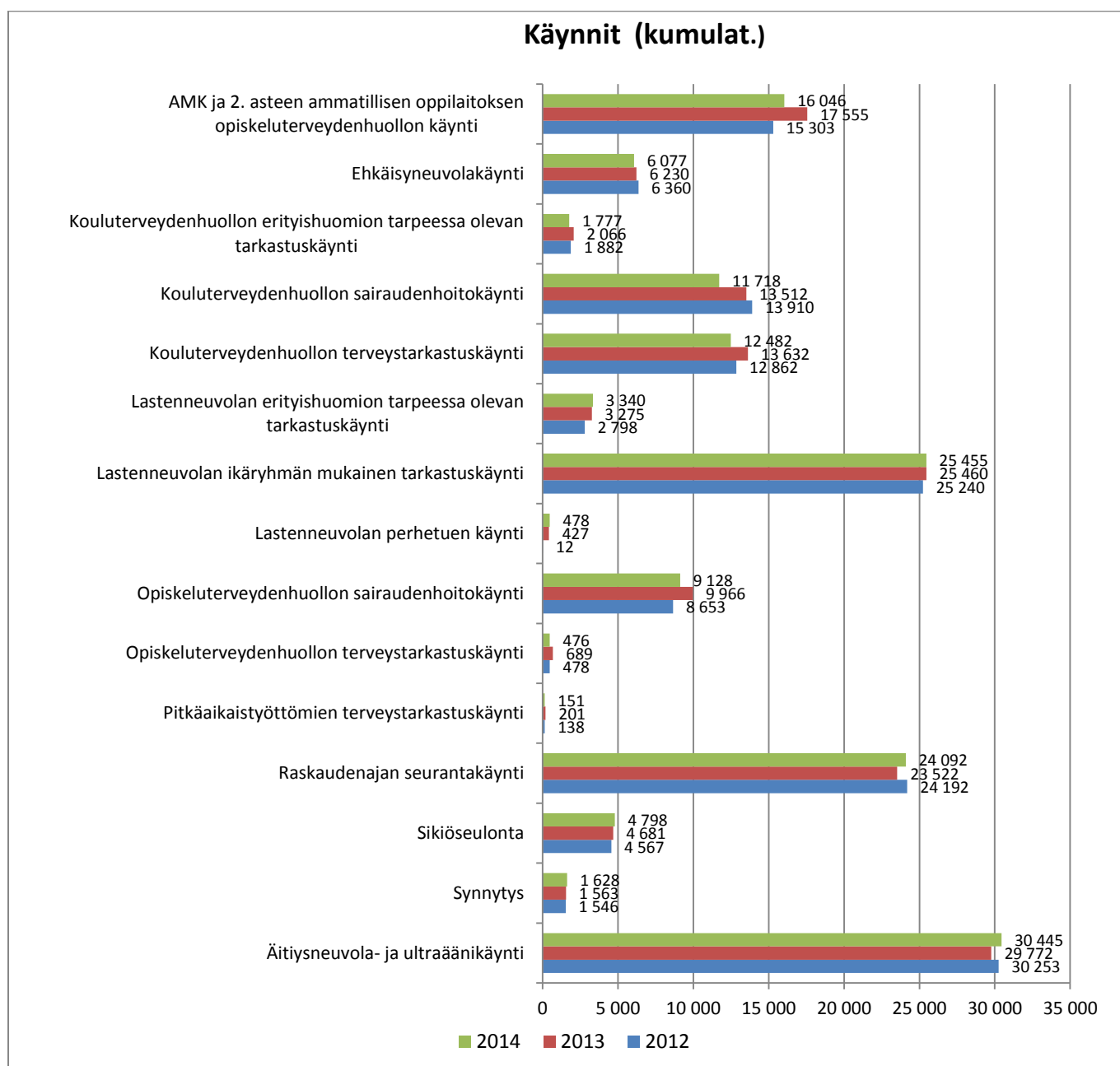




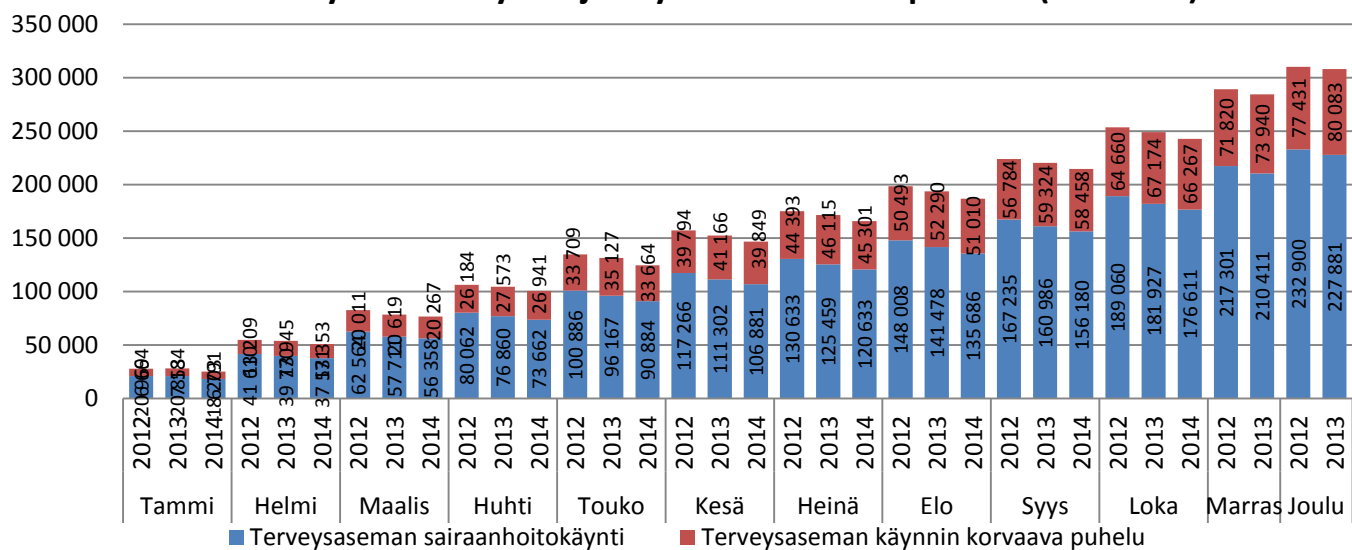
PERUSTERVEYDENHUOLTO



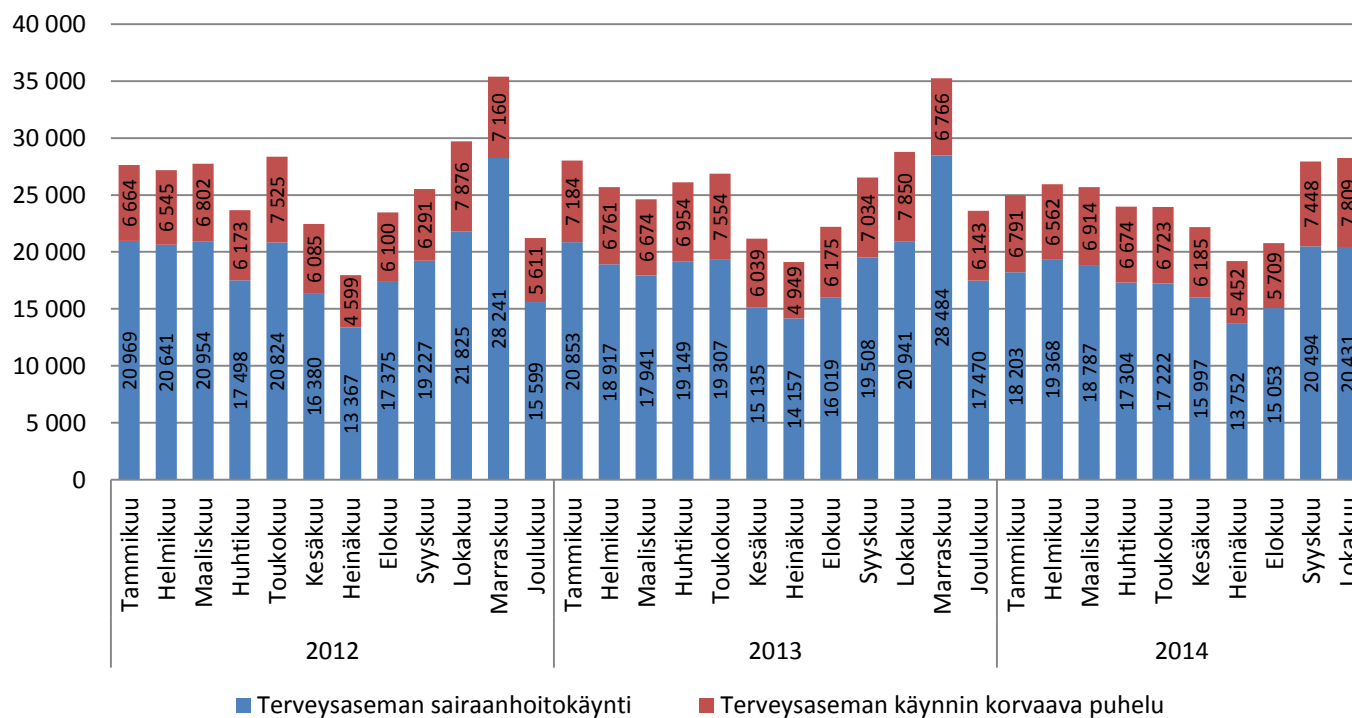
Kumulat. tarkoittaa asiastapahtumien summaa tai eri asiakkaiden määrää vuoden alusta raportointikuukauden loppuun (tammi-lokakuu)



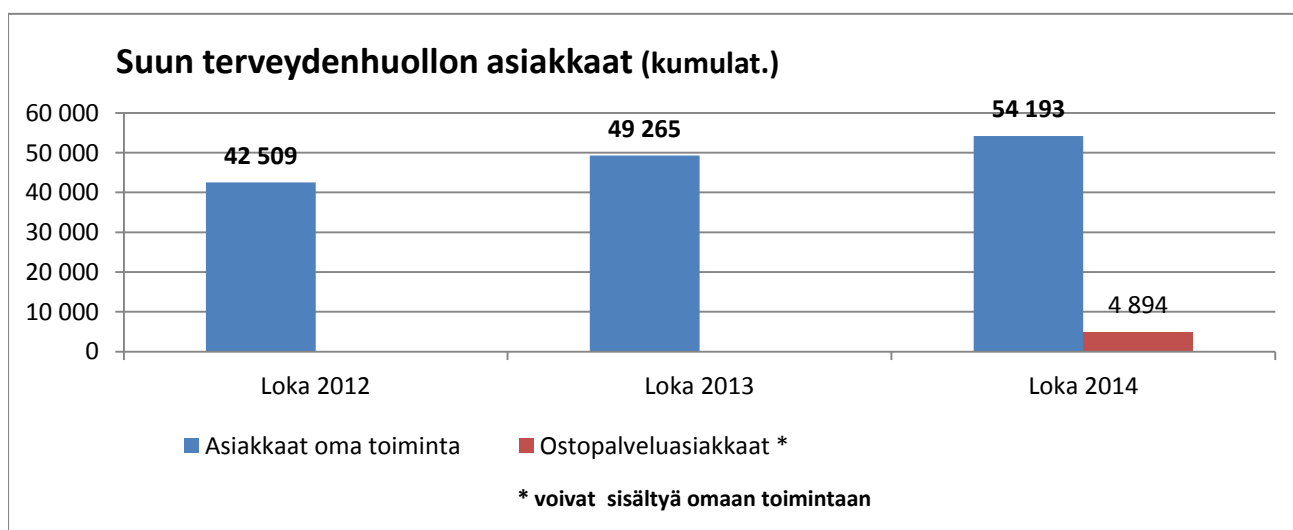
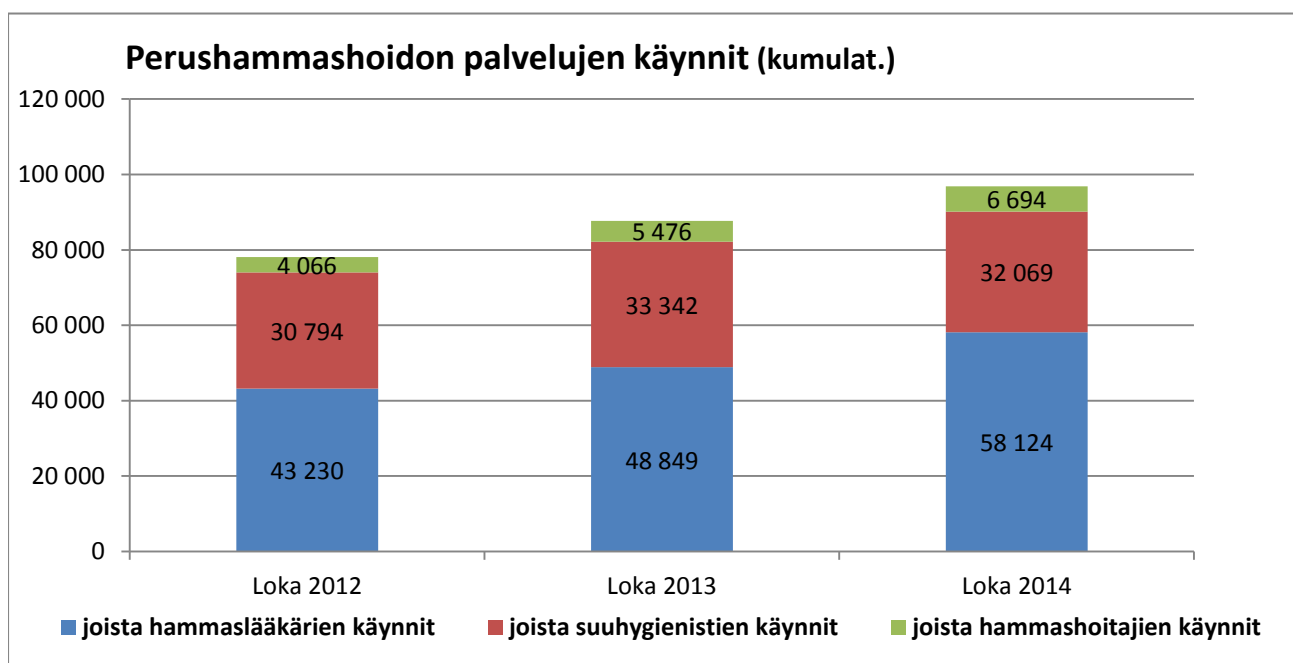
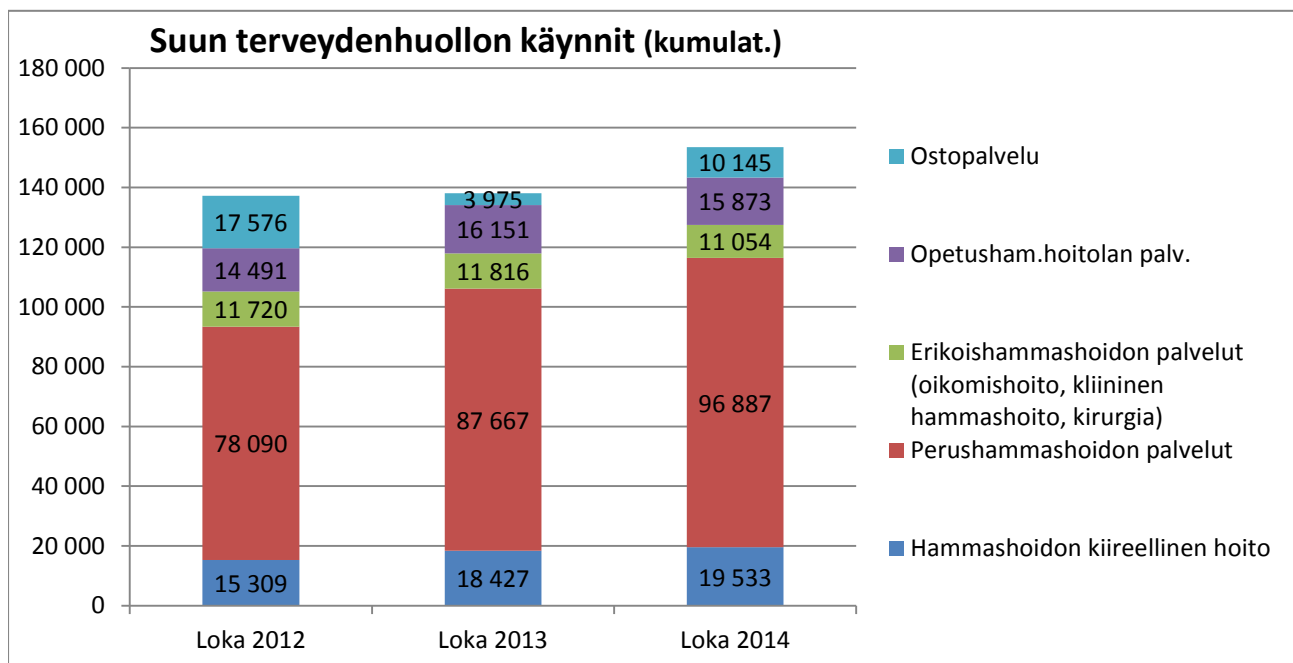
Terveysasemakäynnit ja käynnin korvaavat puhelut (kumulat.)



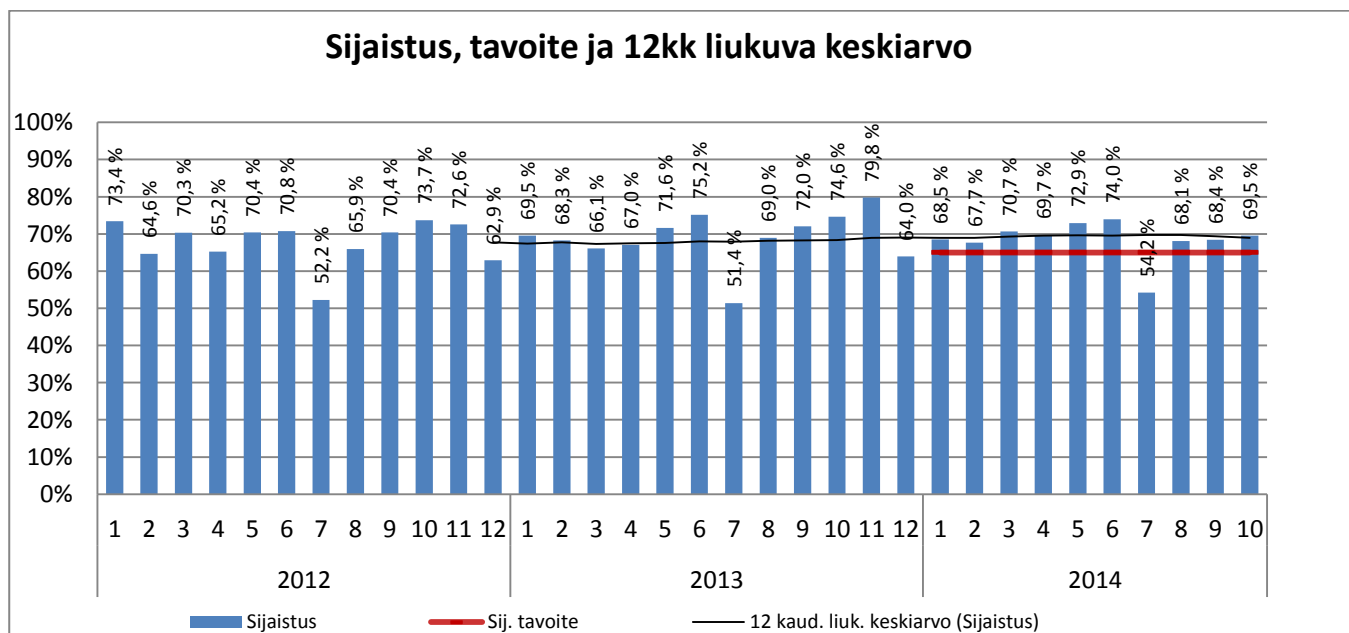
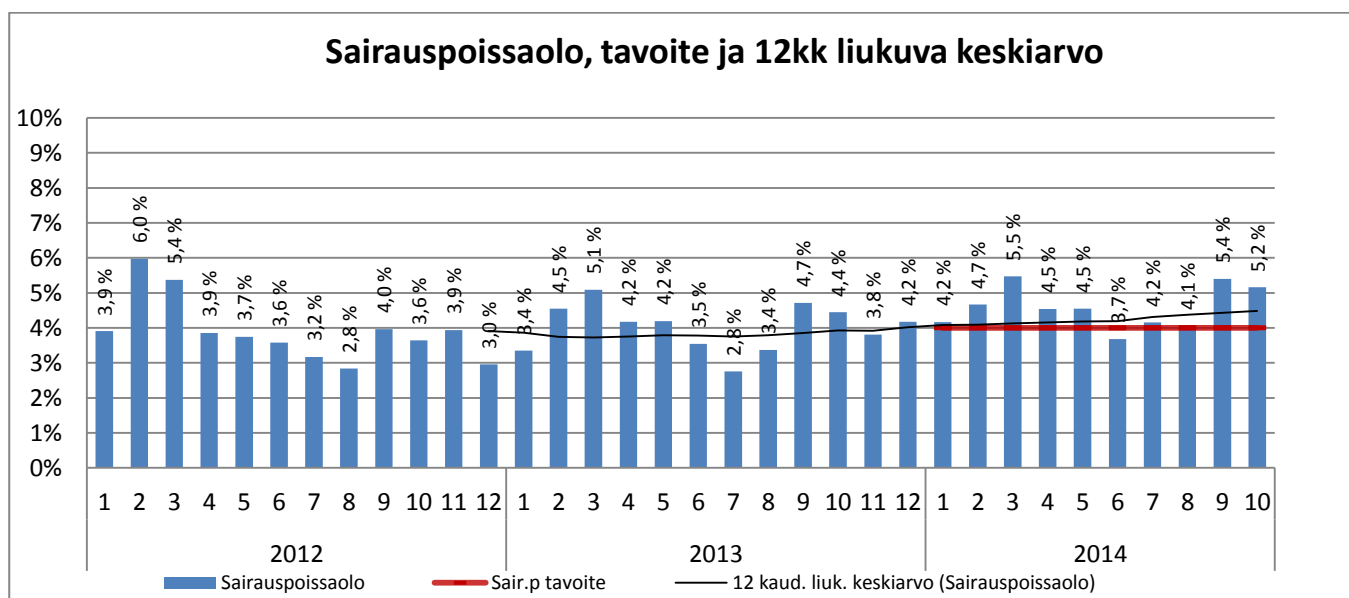
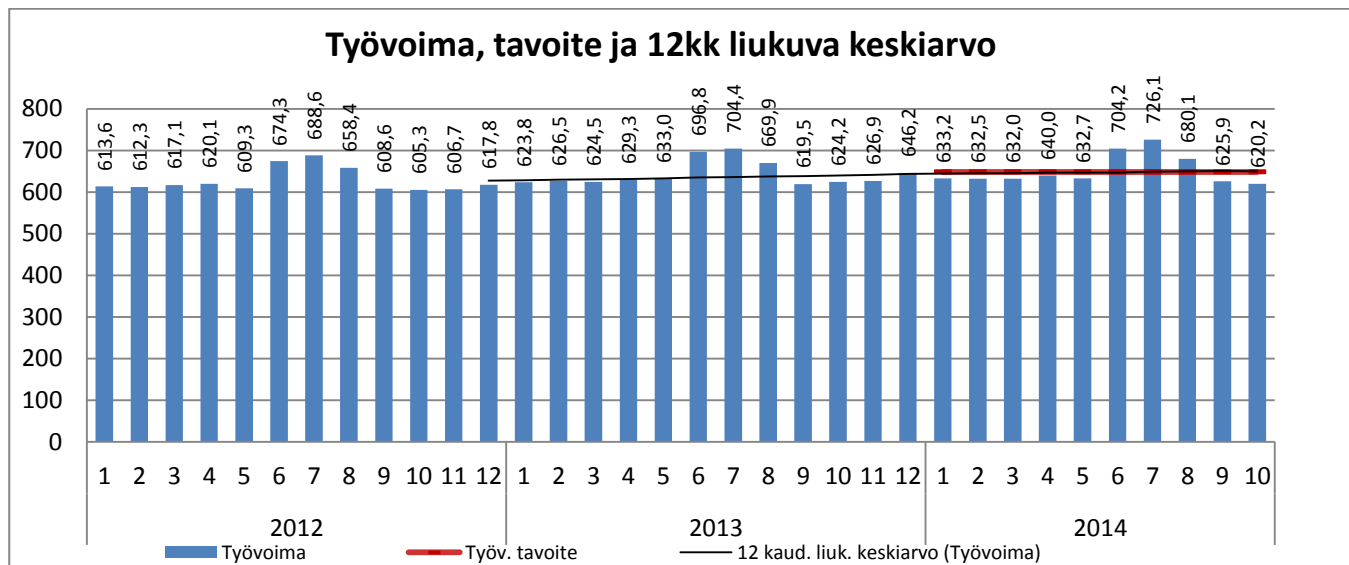
Terveysasemakäynnit ja käynnin korvaavat puhelut kuukausittain



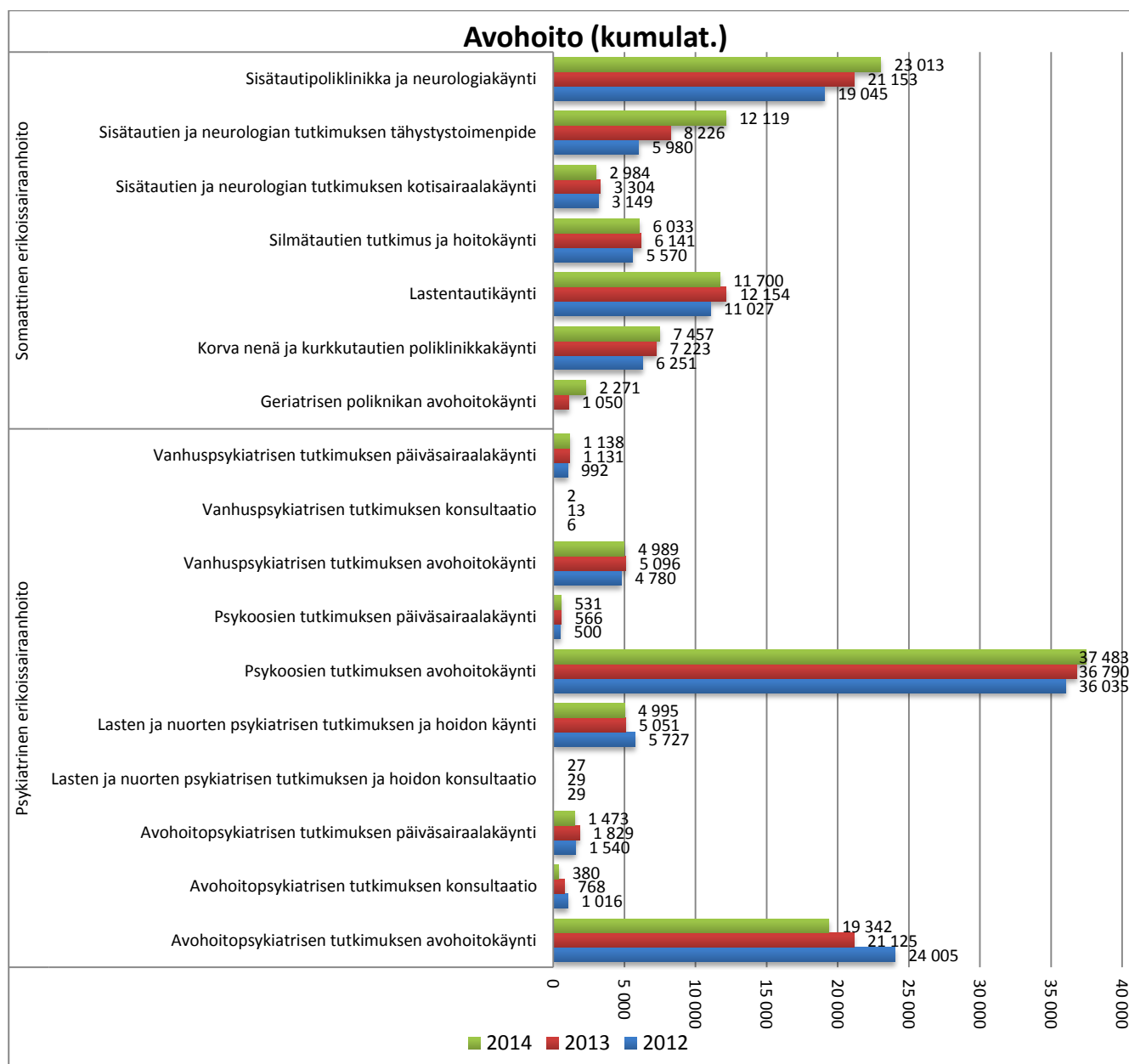
Suun terveydenhuolto



ERIKOISSAIRAANHOITO

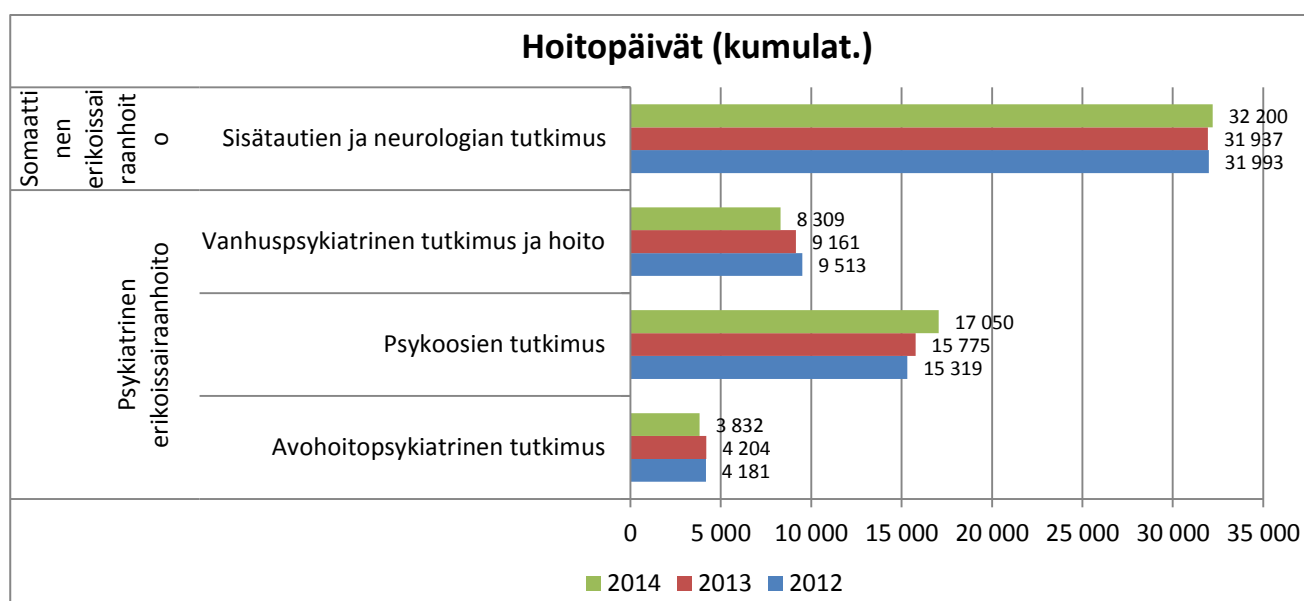


Oma toiminta: Avohoito

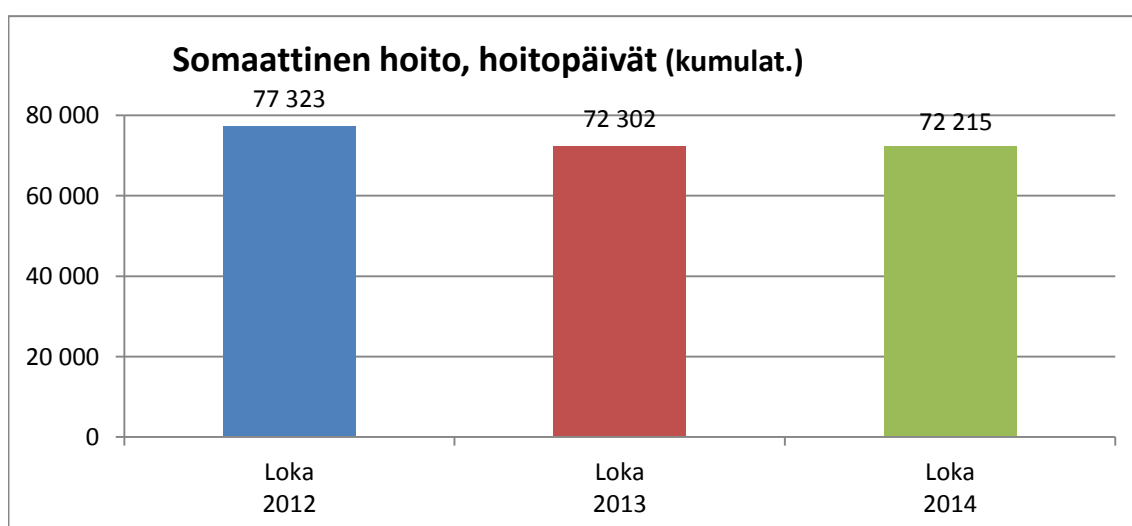
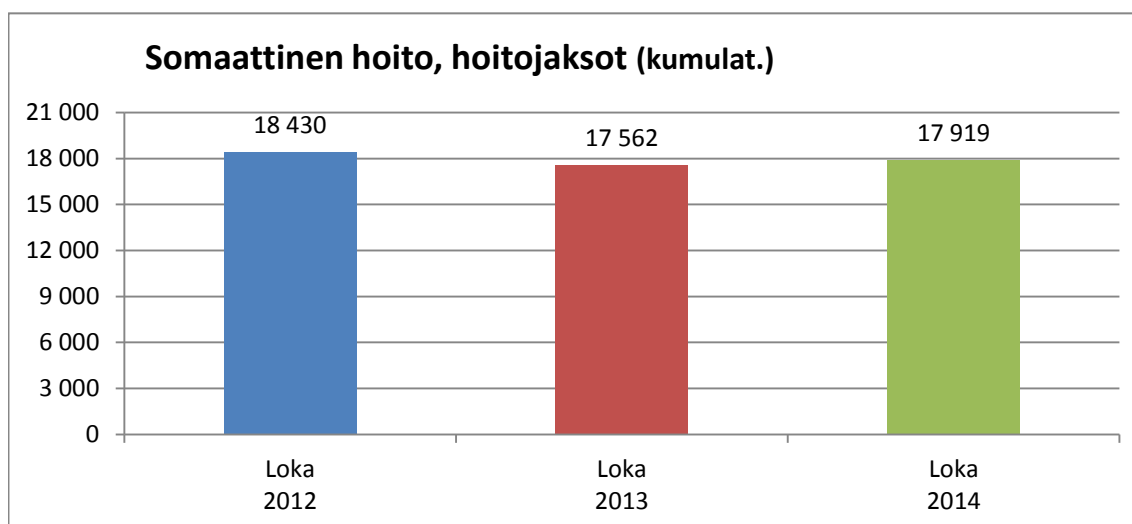
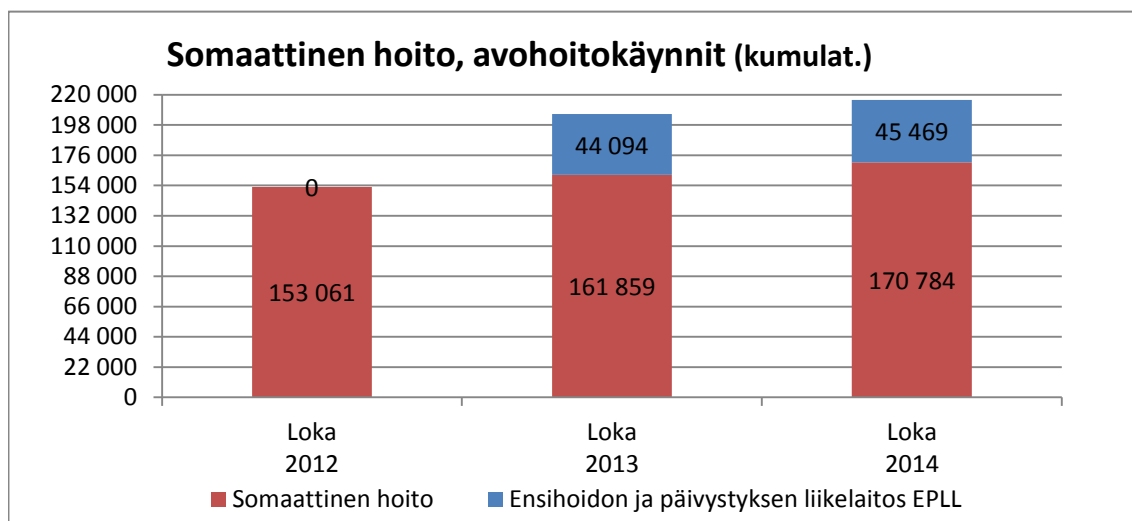


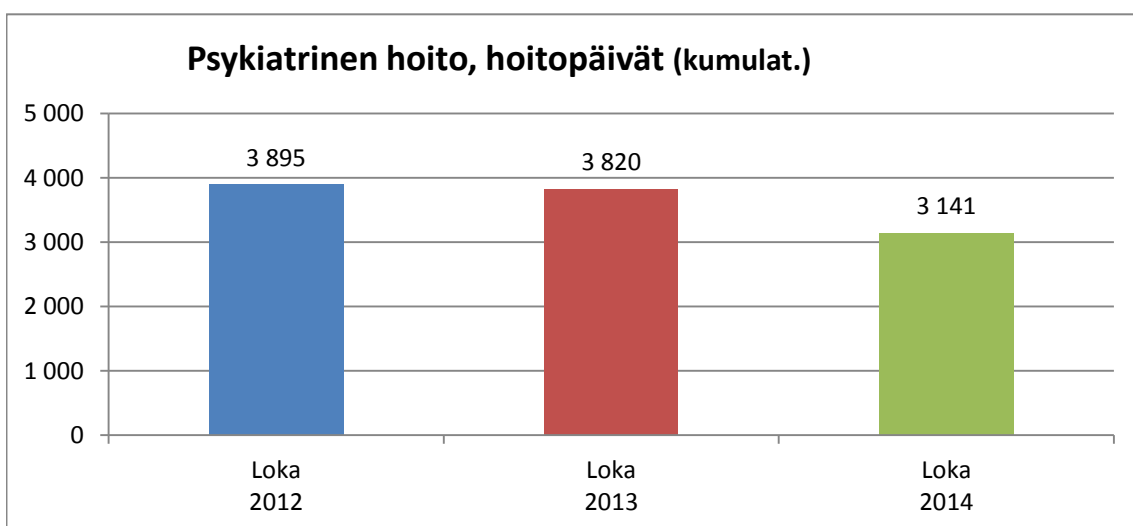
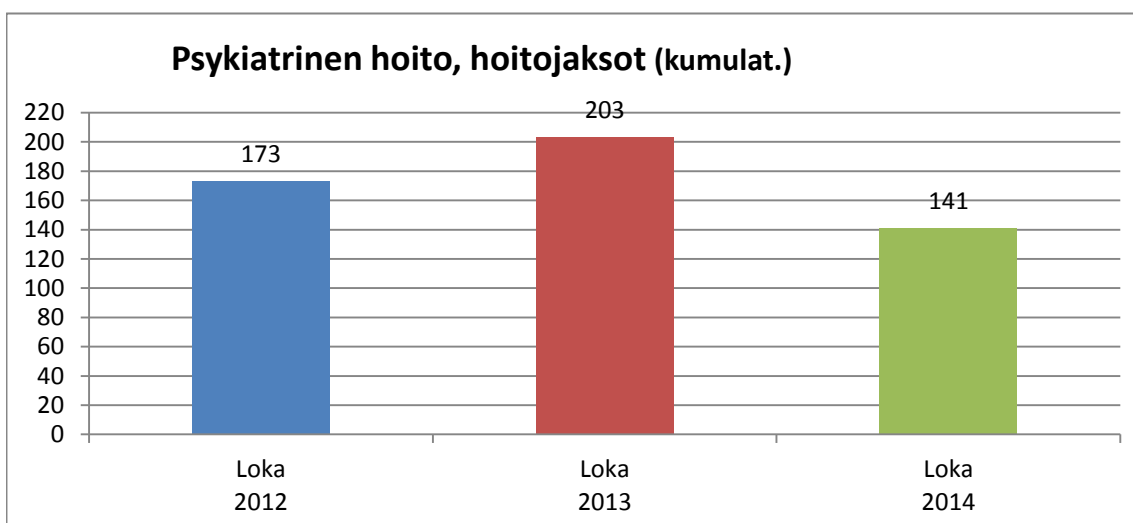
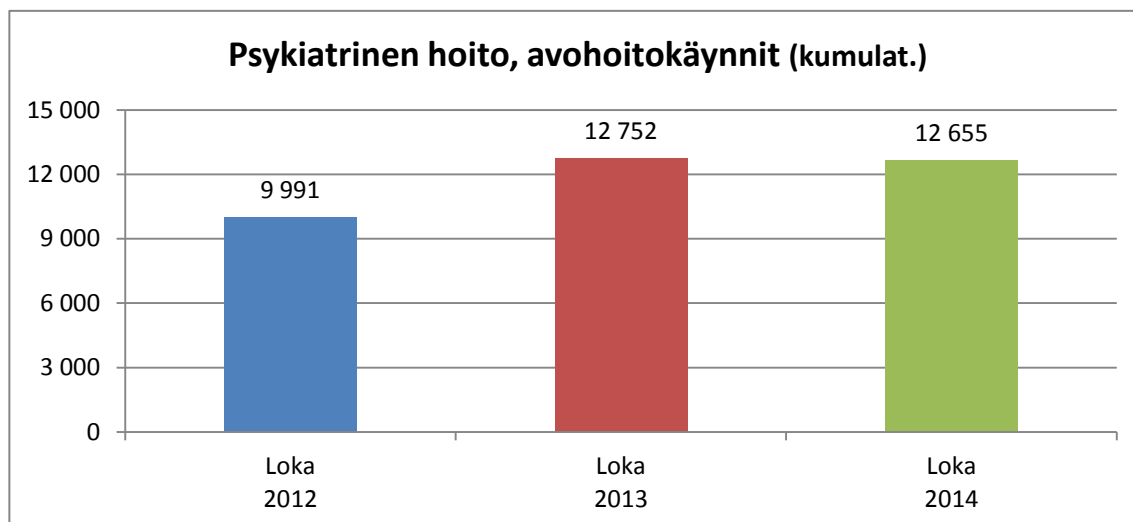
Oma toiminta: Sairaalahoito

Huom! Pegasos-päivityksen yhteydessä hoitajaksojen käsittely muuttunut, asian selvittely kesken. Päättyneiden hoitajaksojen määriä ja hoitajaksojen keskimääräisiä pituuksia ei siksi esitetä raportilla.

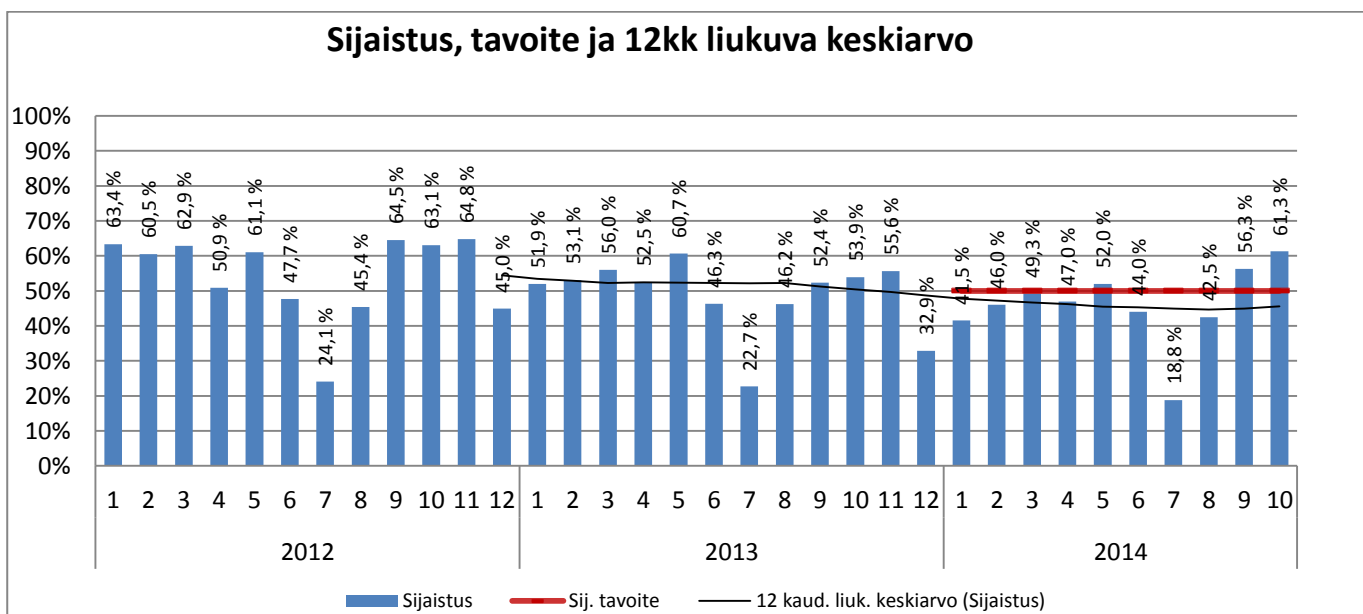
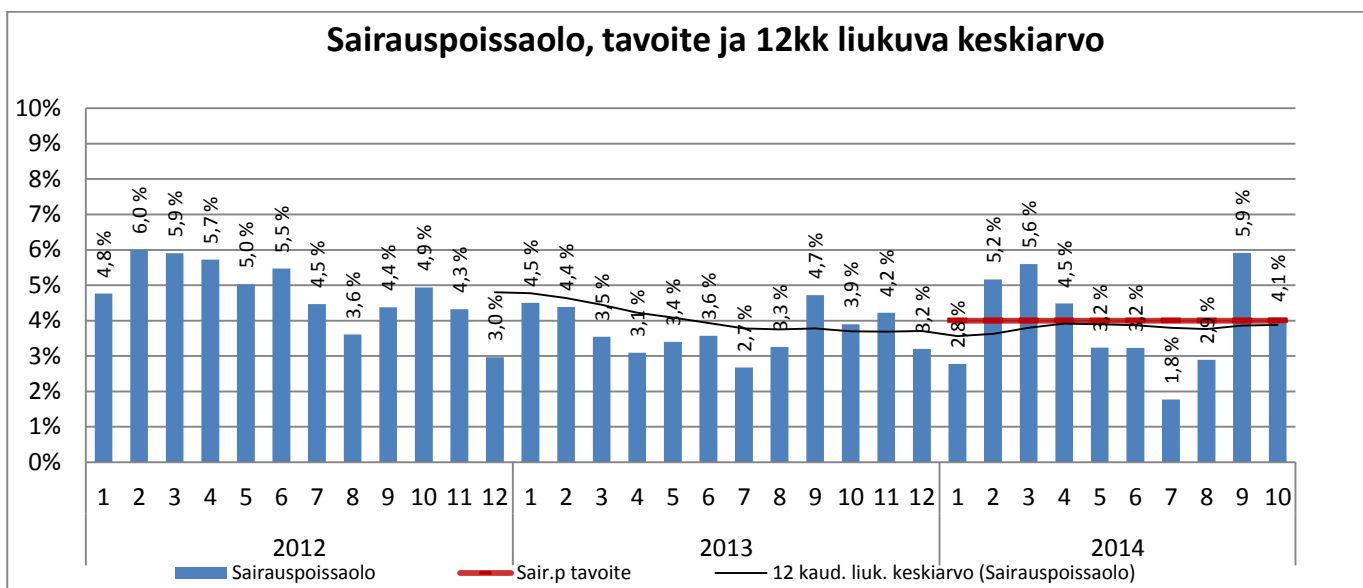
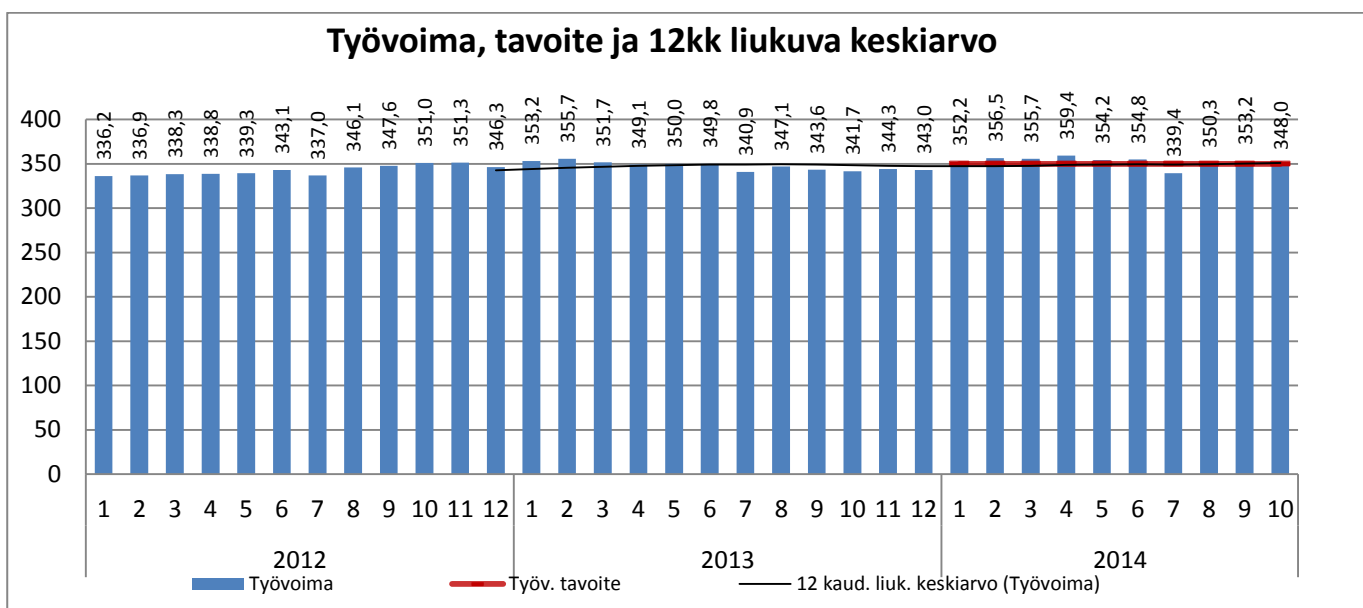


Sairaanhoitopiiri



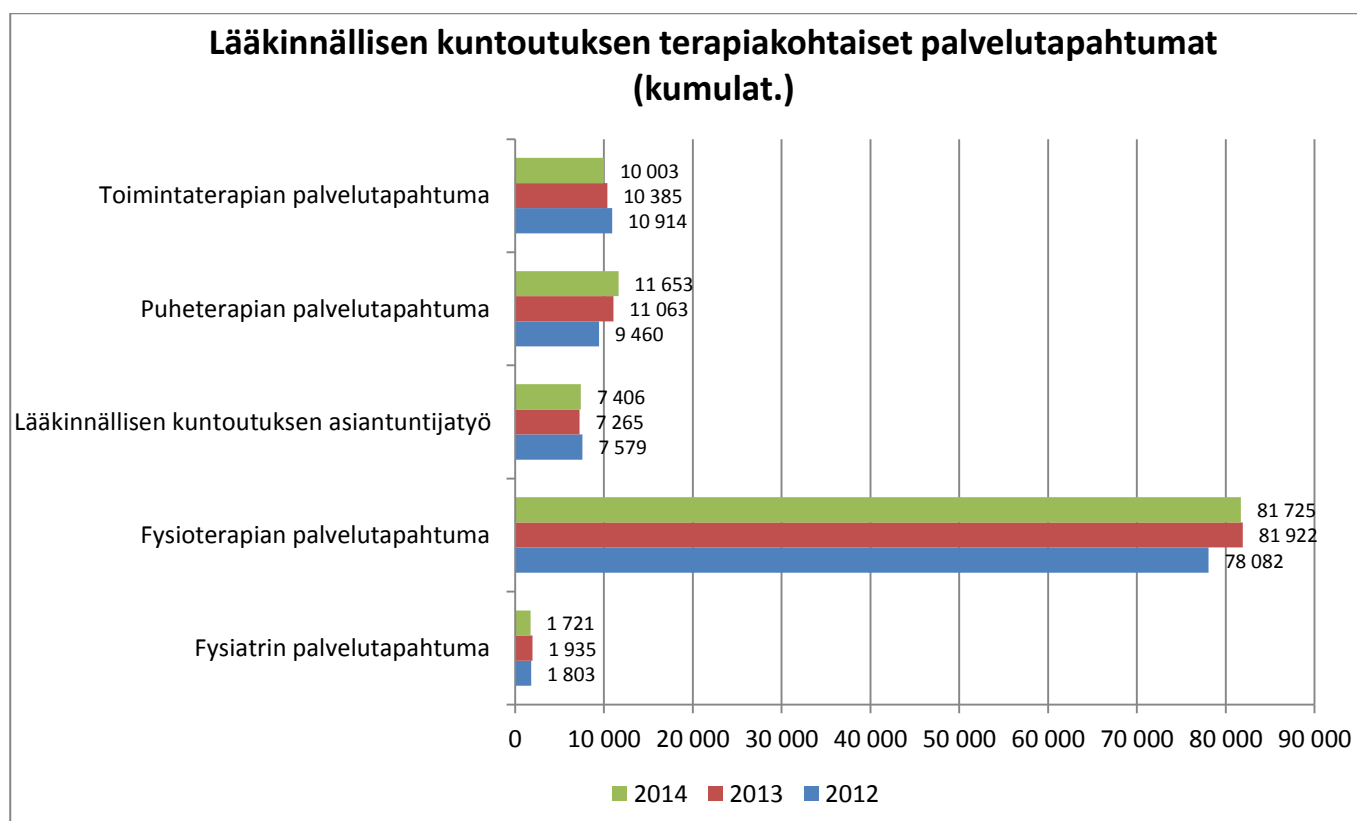
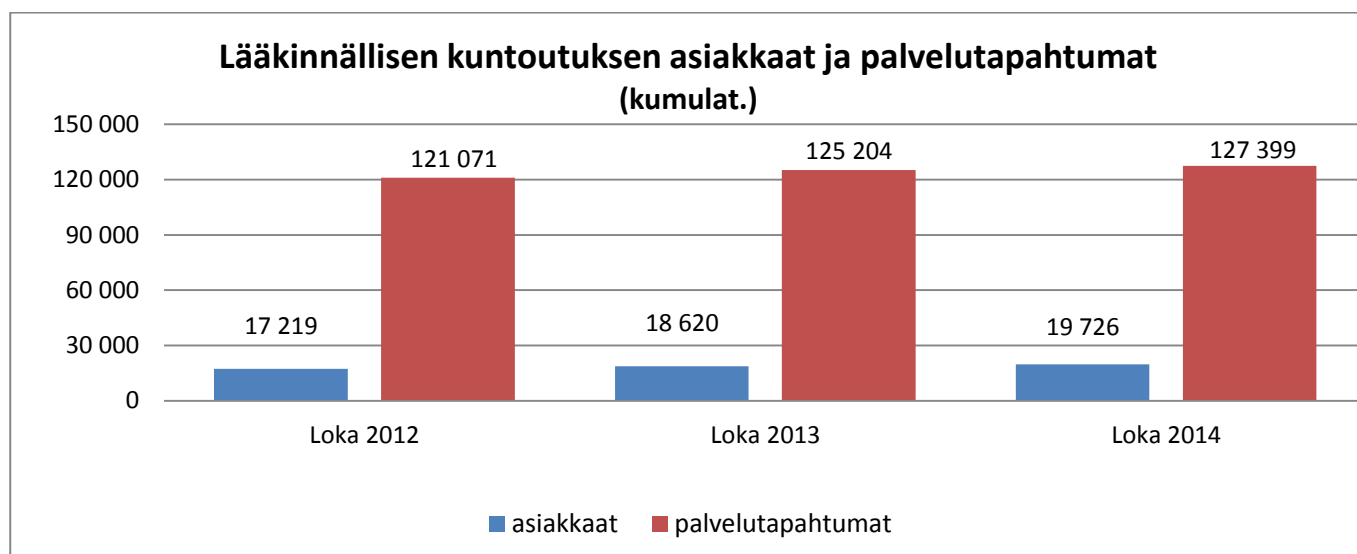


KUNTOUTUMISPALVELUT

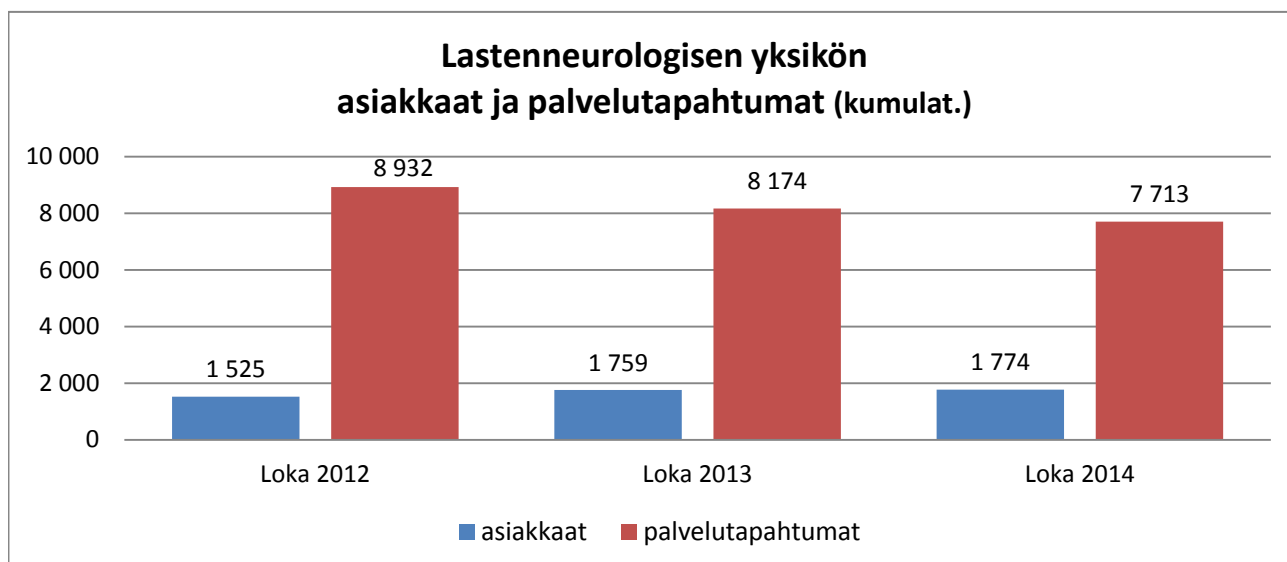


Kumulat. tarkoittaa asiastapahtumien summaa tai eri asiakkaiden määrää vuoden alusta raportointikuukauden loppuun (tammi-lokakuu)

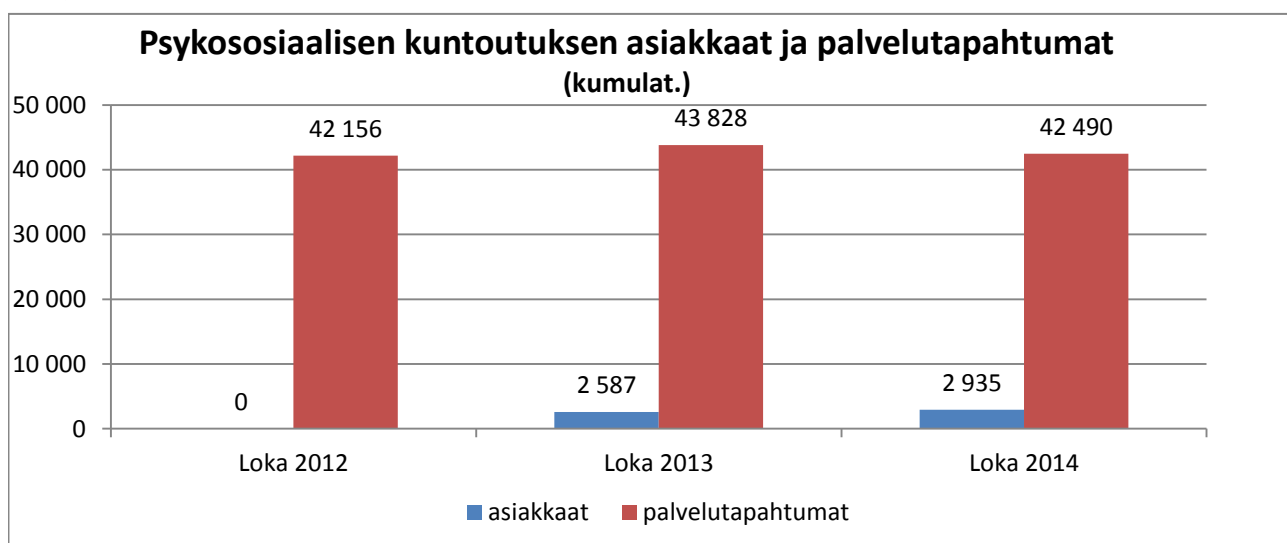
Lääkinnällinen kuntoutus



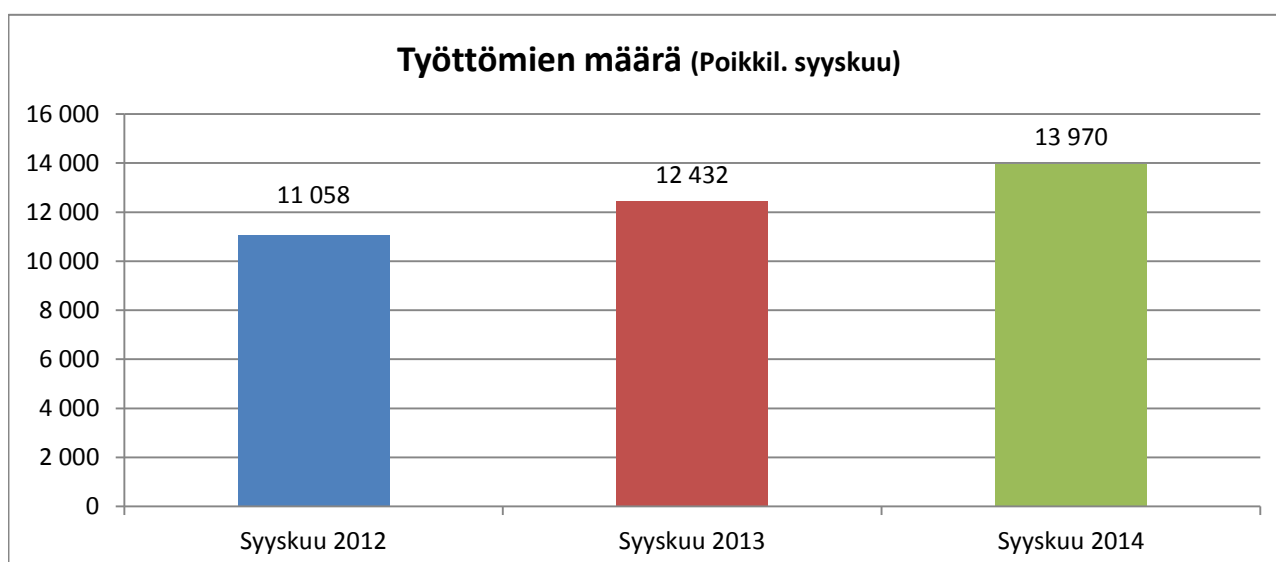
Lastenneurologinen yksikkö

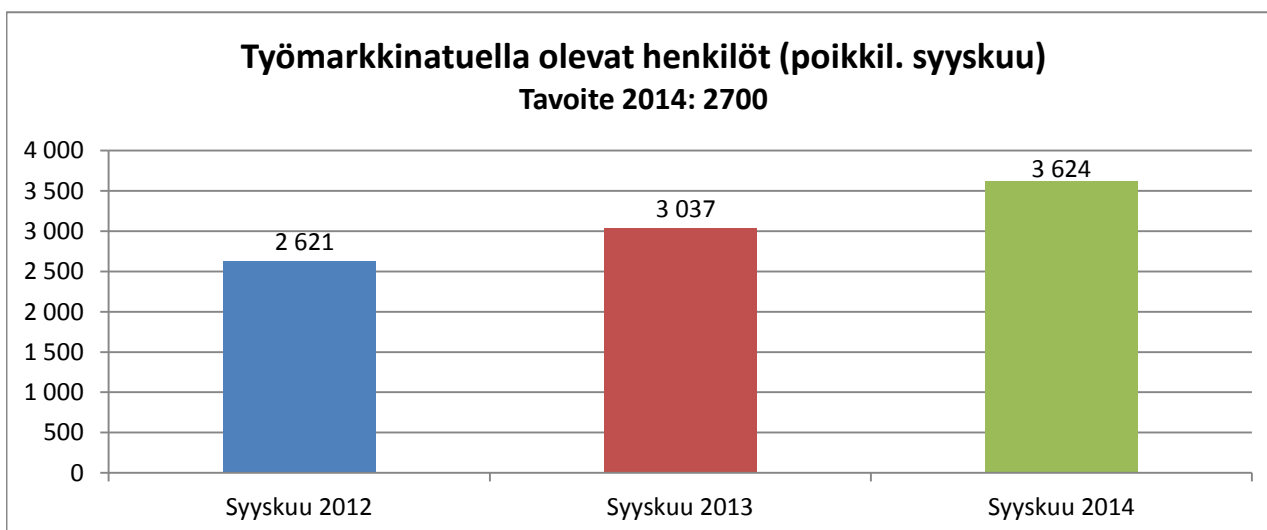
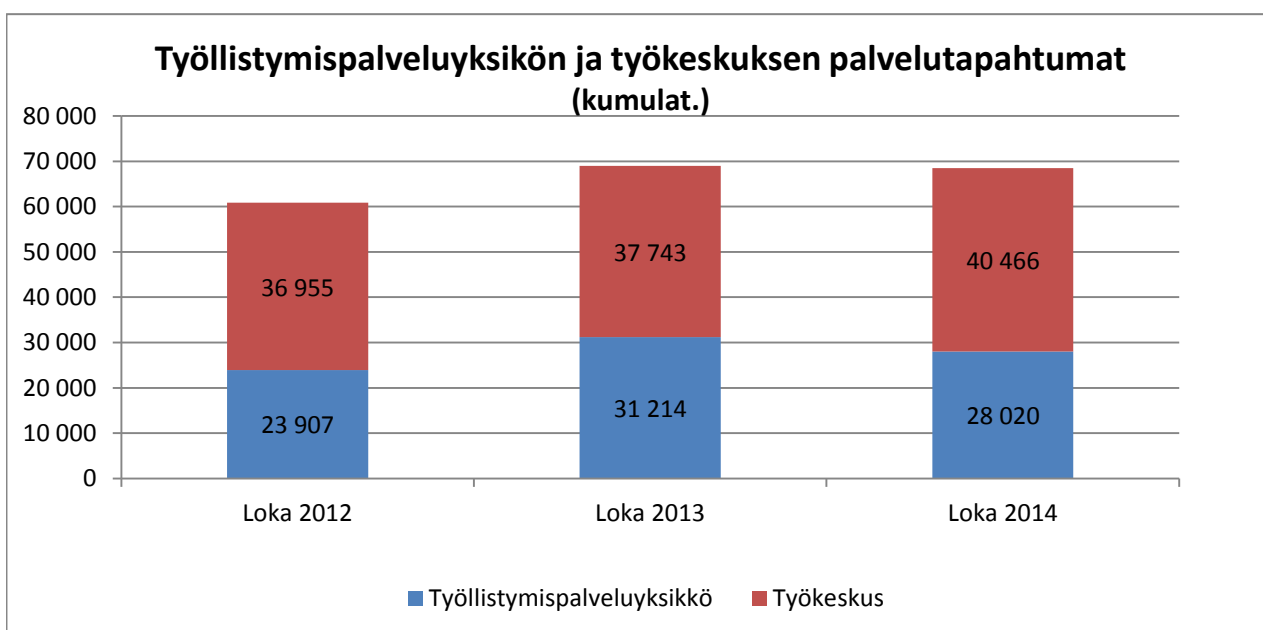
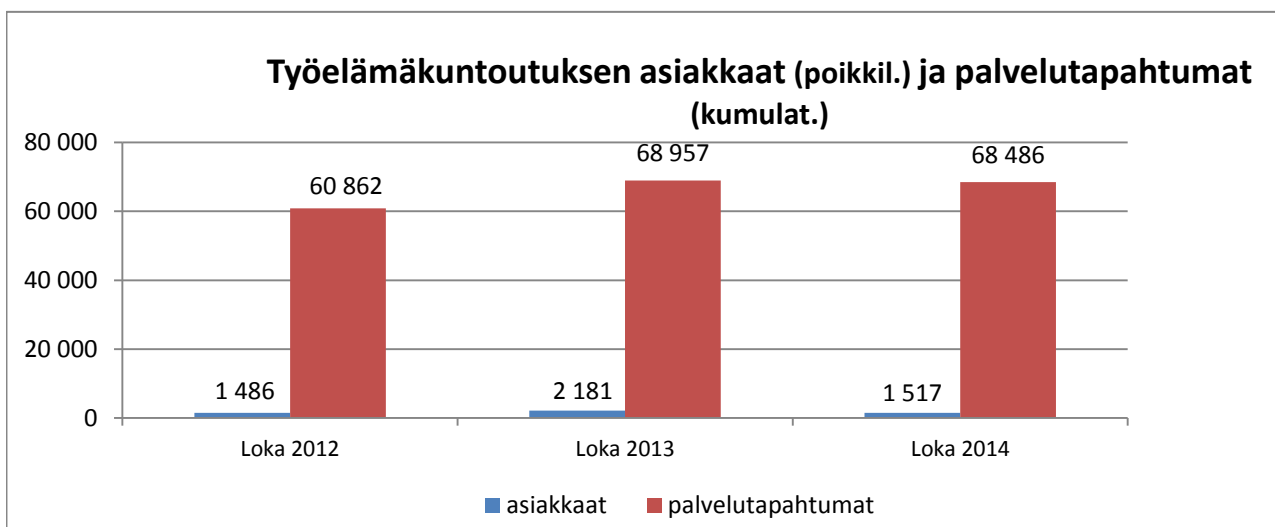


Psykososiaalinen kuntoutus

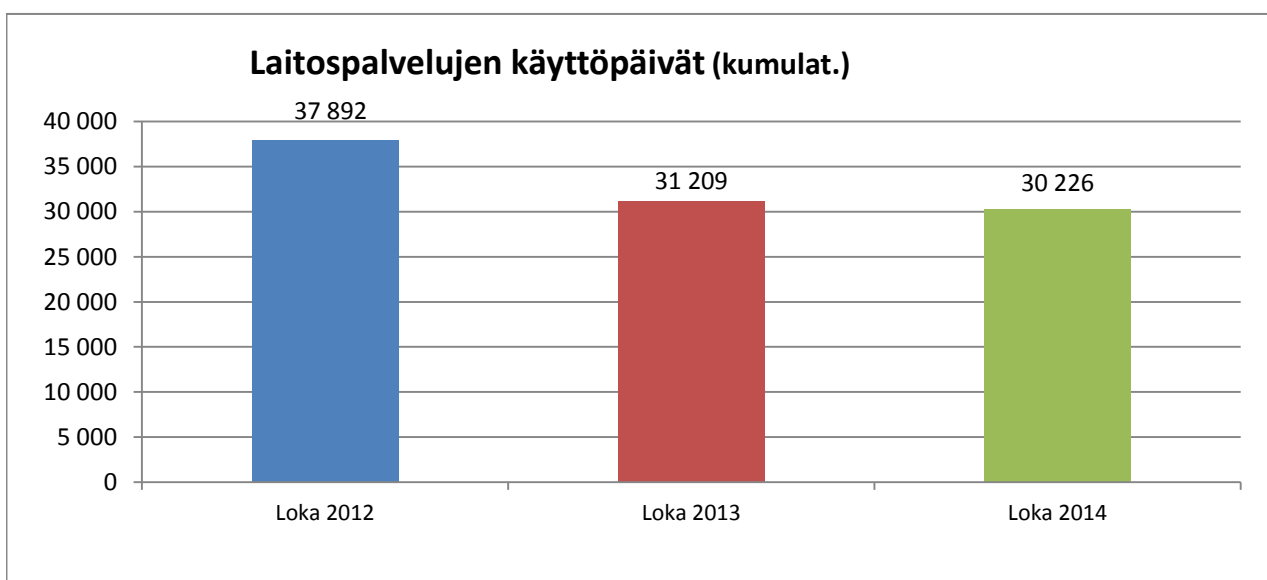
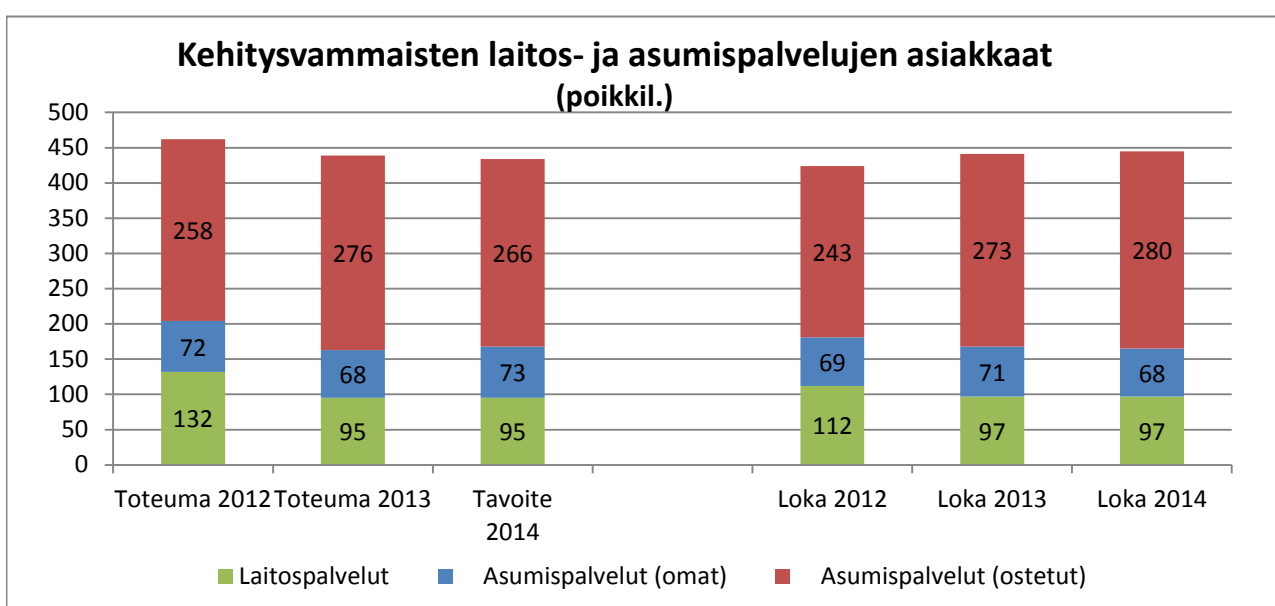
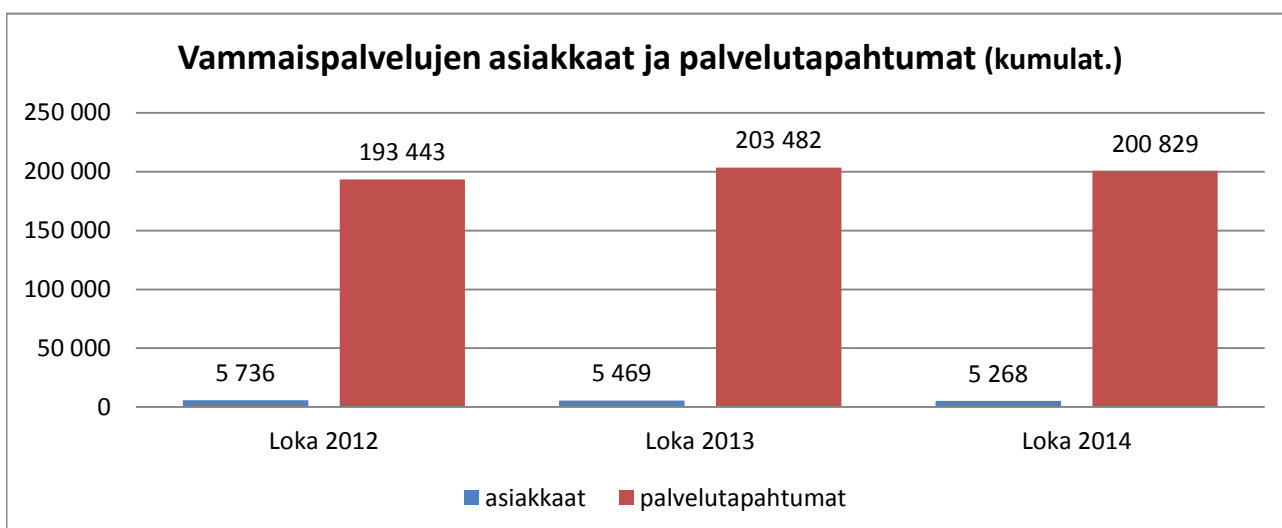


Työelämäkuntoutus

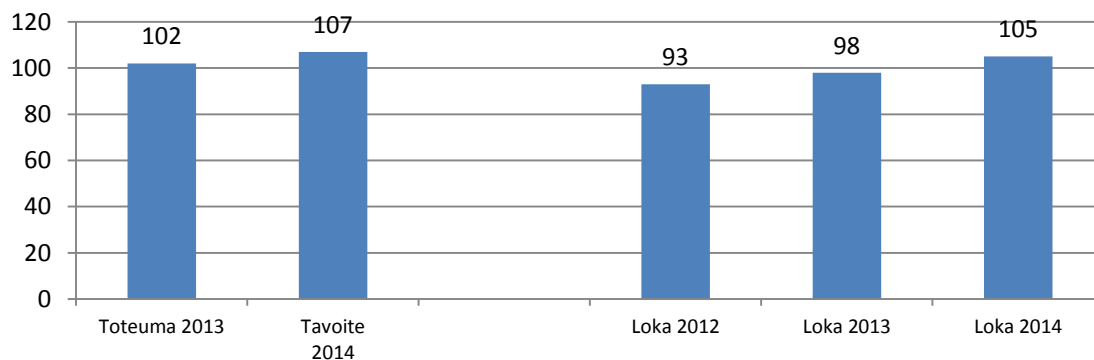




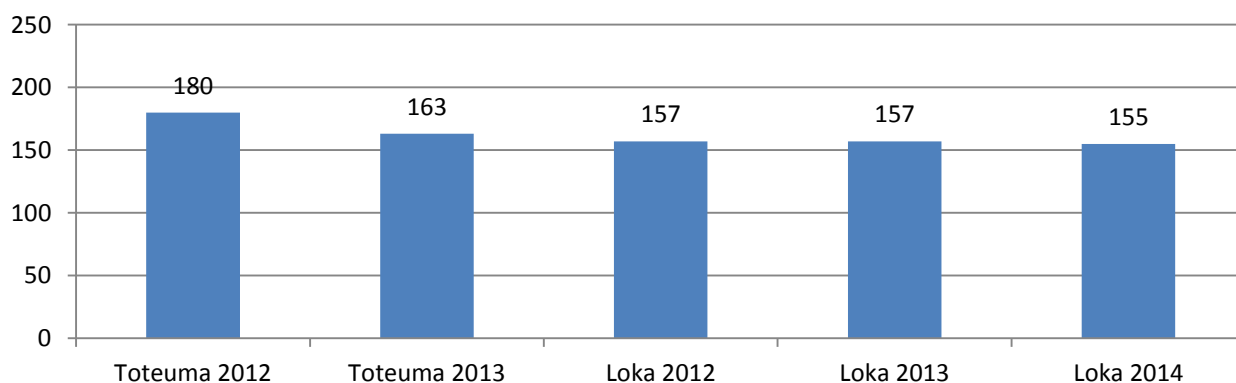
Vammaispalvelut



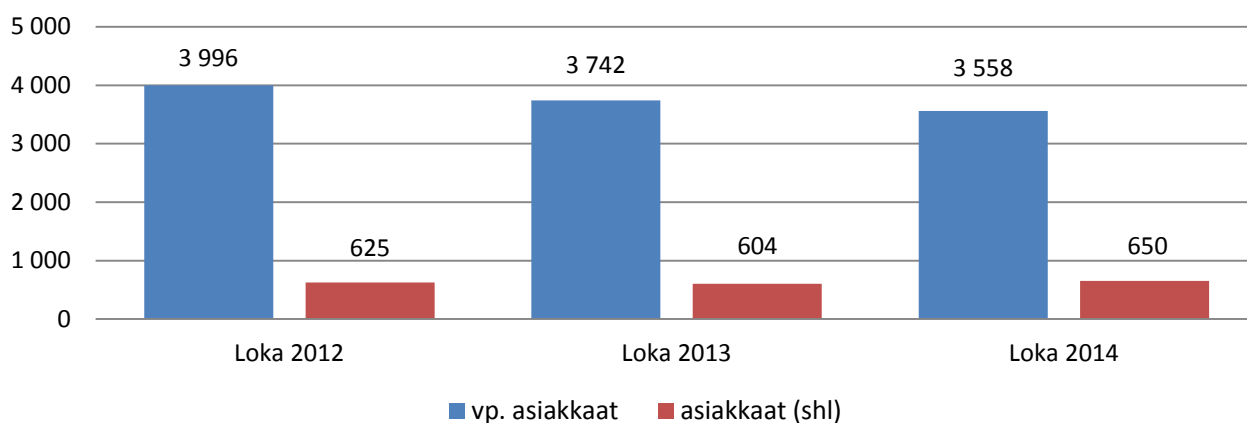
Vaikeavammaisten palveluasumisen asiakkaat (poikkil.)



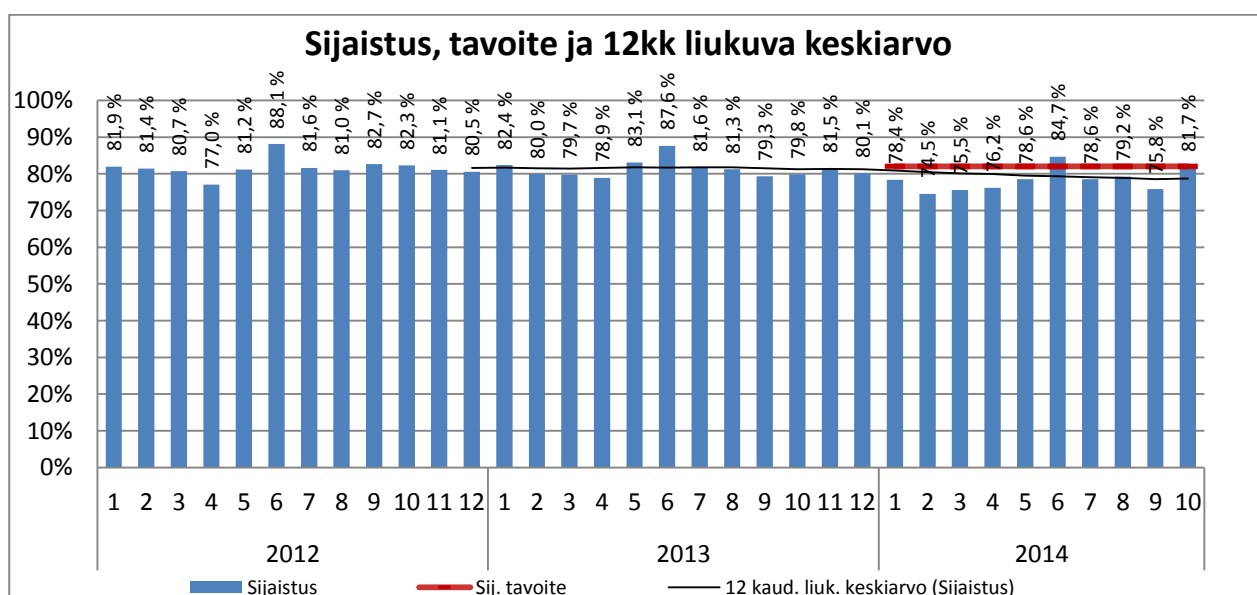
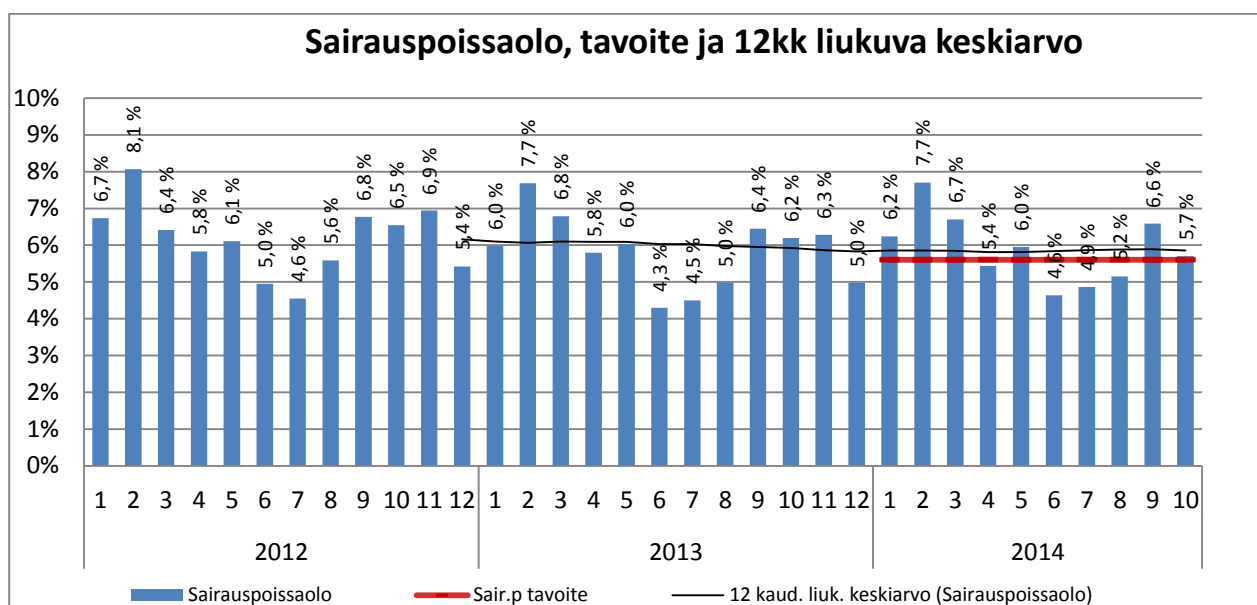
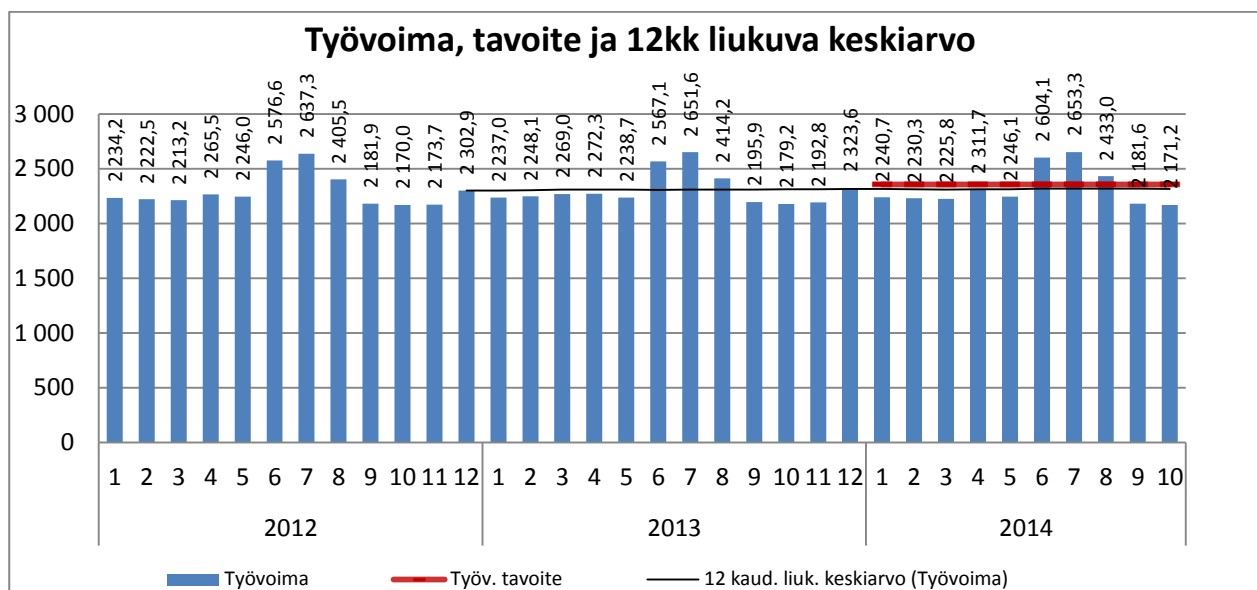
Vammaisten ja pitkäaikaissairaiden lasten omaishoidontuen asiakkaat (poikkil.)



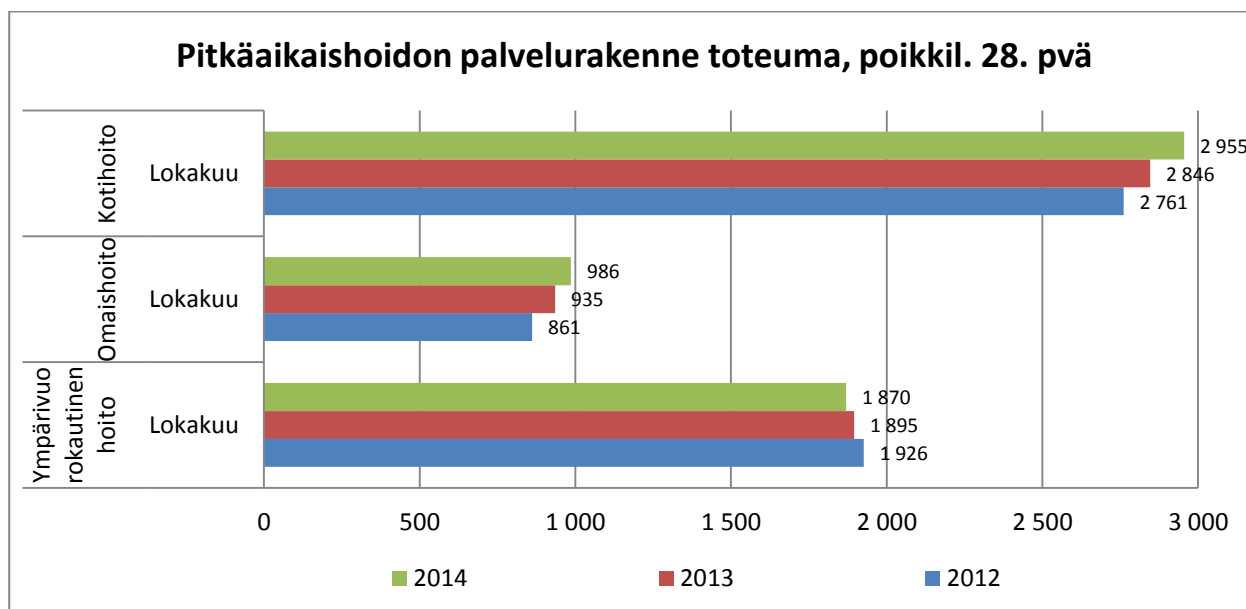
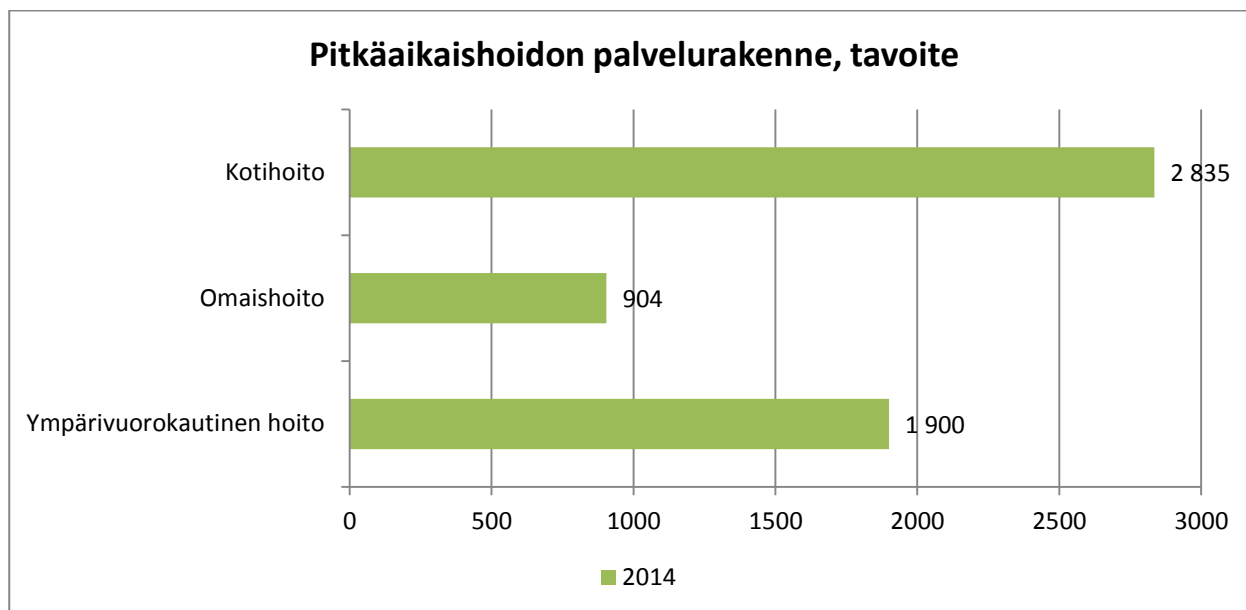
Kuljetuspalvelujen asiakkaat (kumulat.)

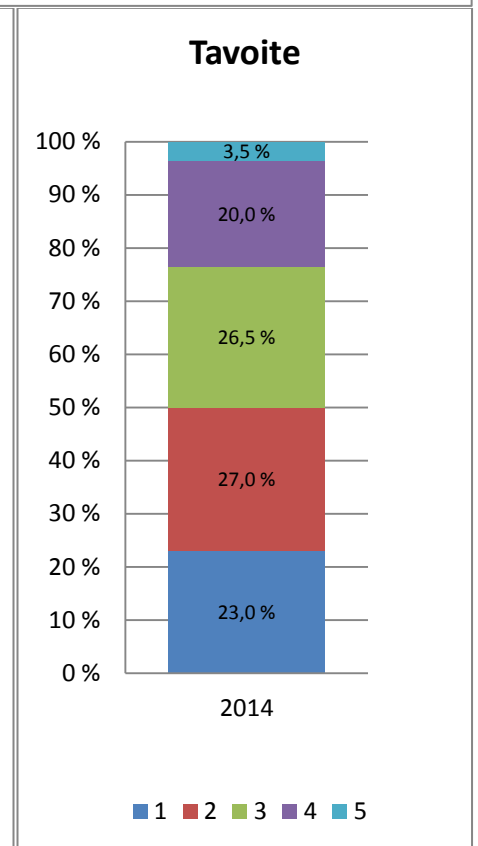
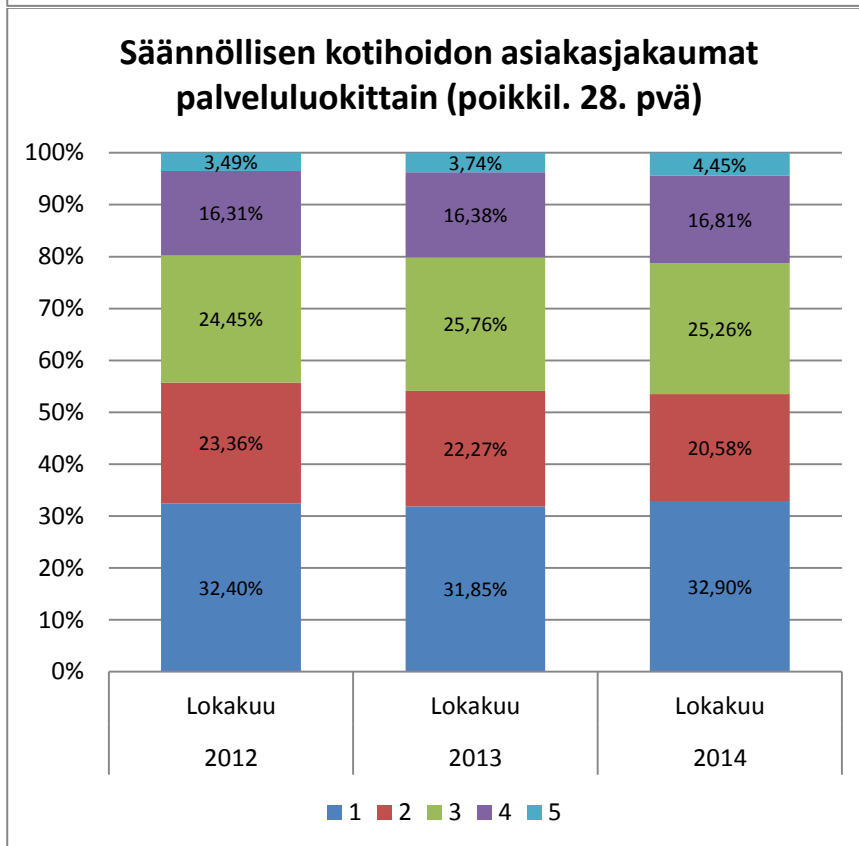
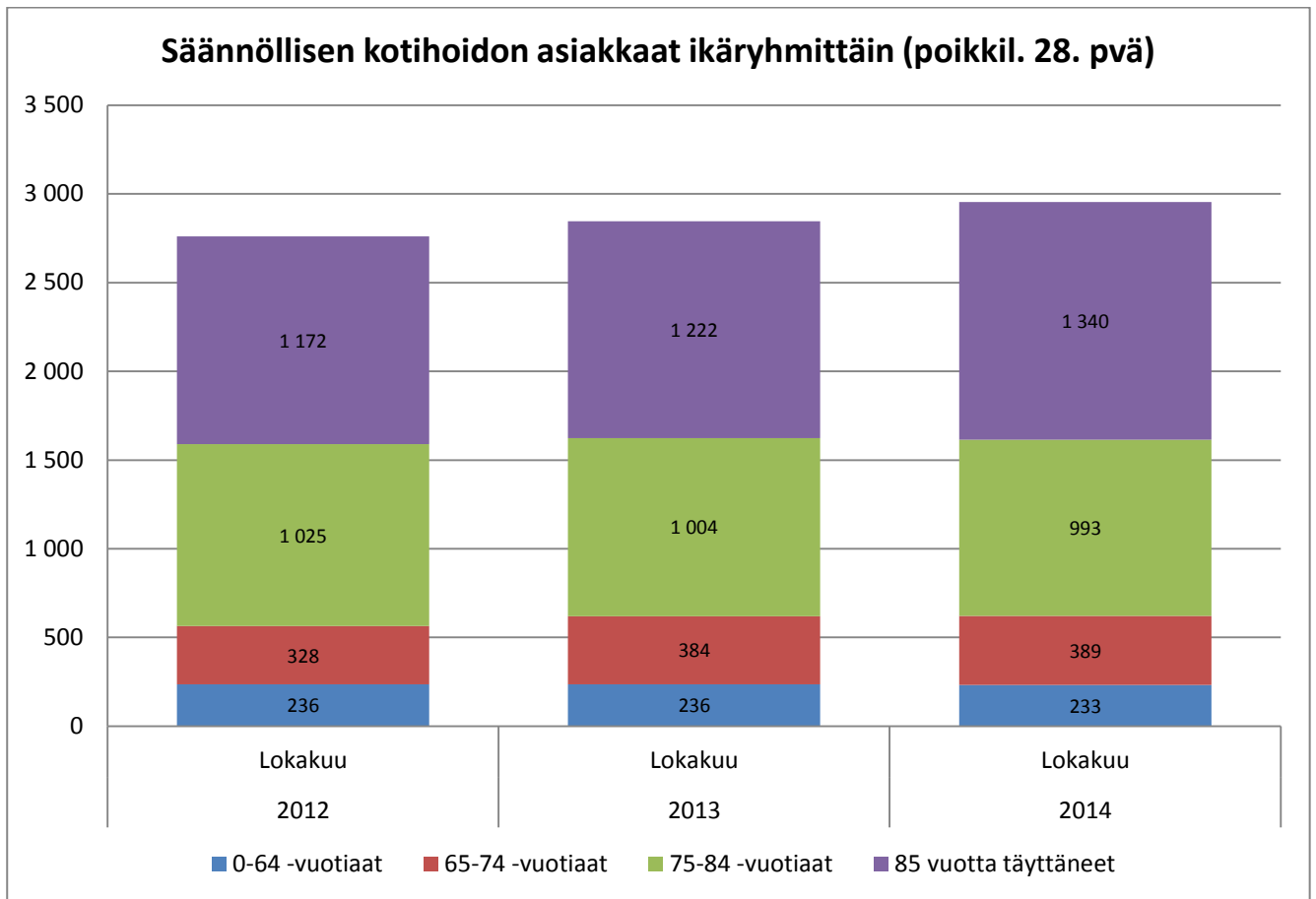


VANHUSPALVELUT

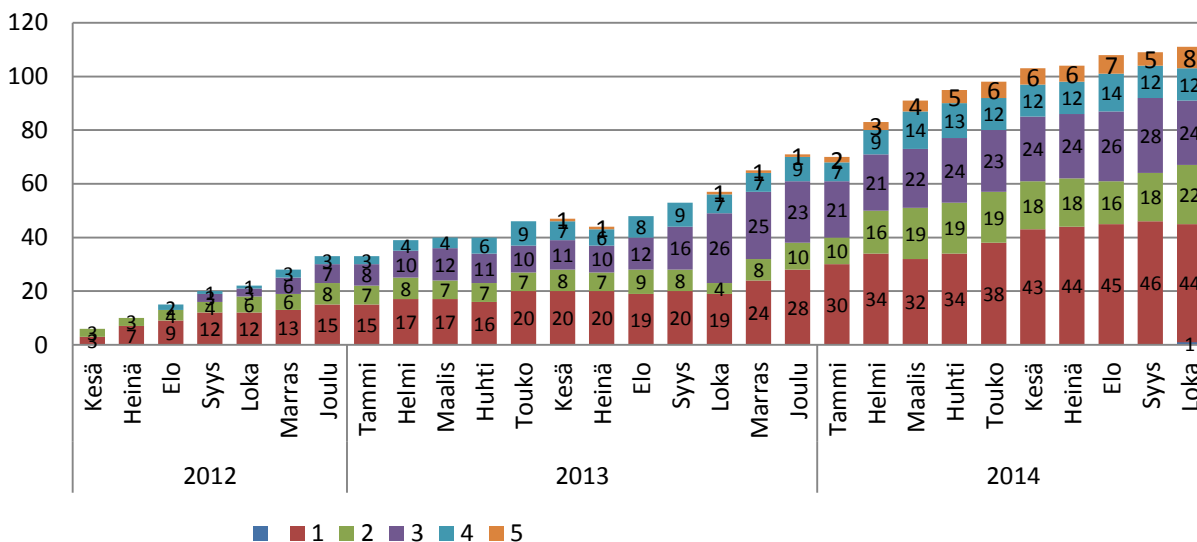


Toiminta

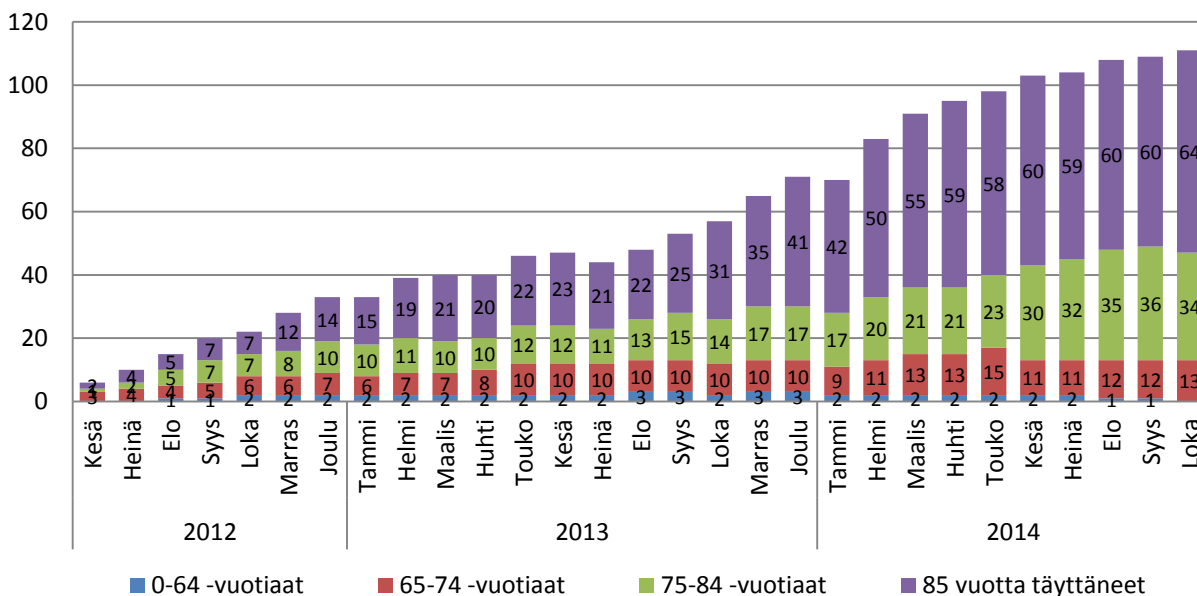


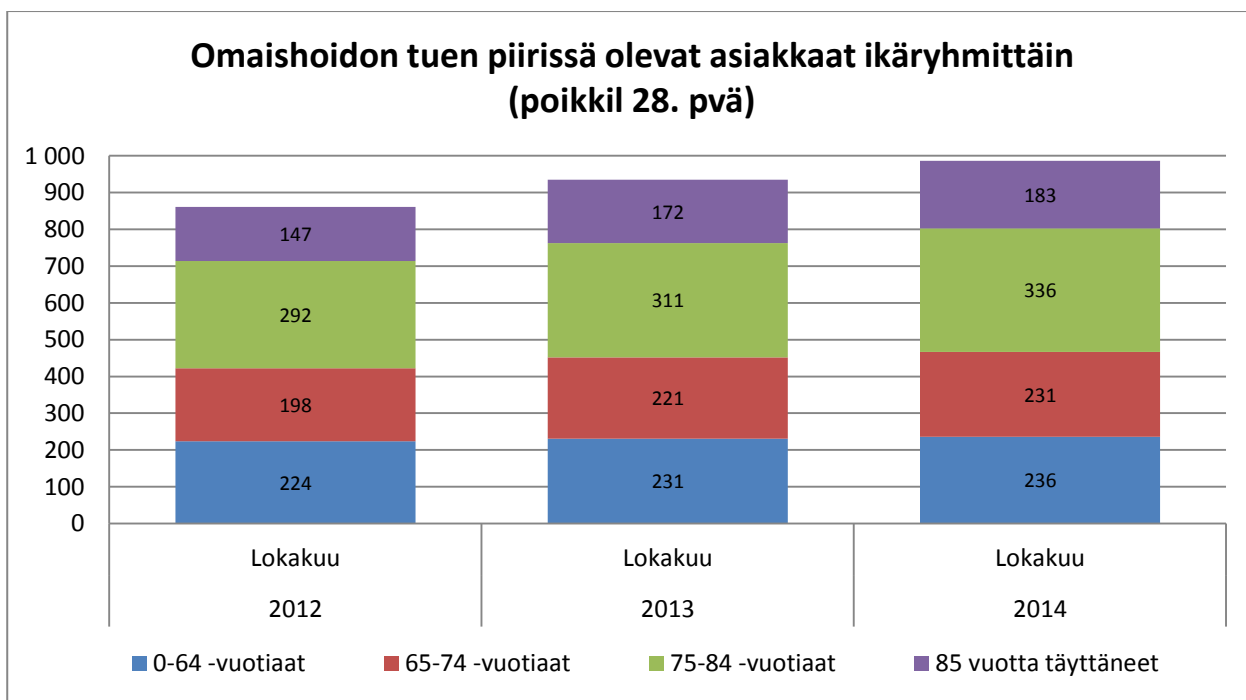
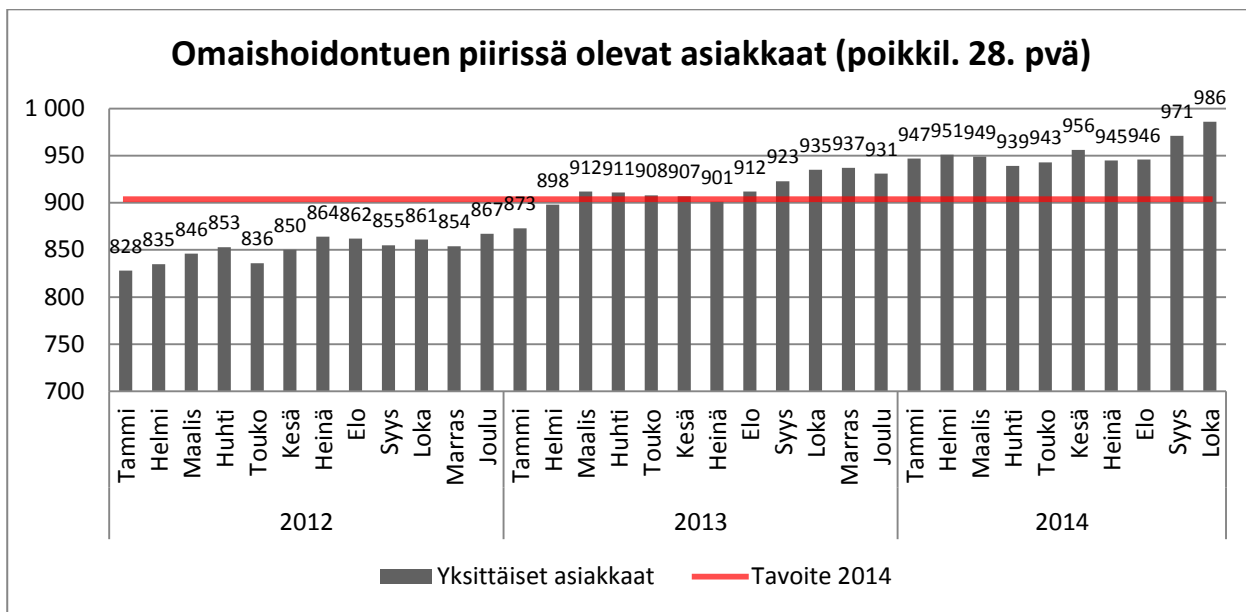


Palveluseteliasiakkaat palveluluokittain (poikkil. 28. pvä)



Palveluseteliasiakkaat ikäryhmittäin (poikkil. 28. pvä)

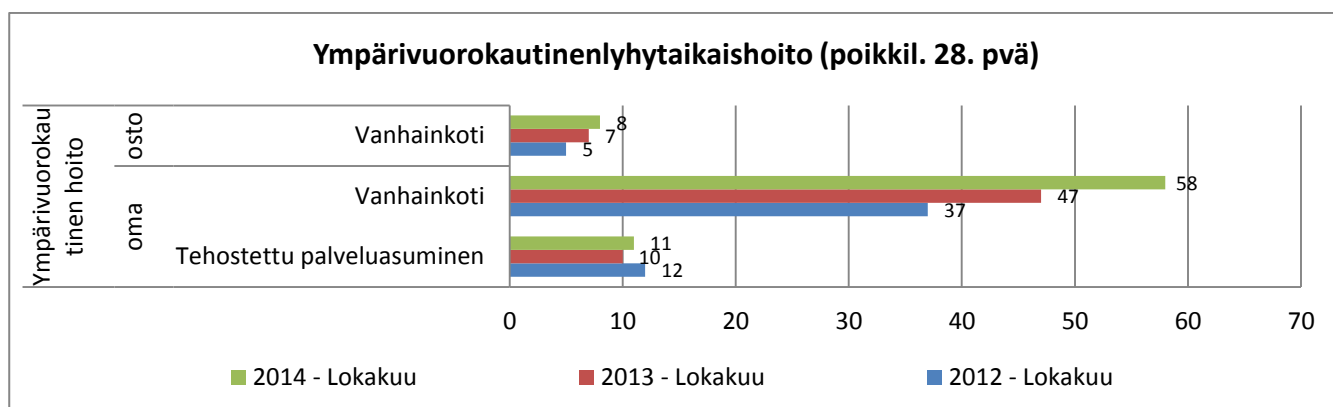
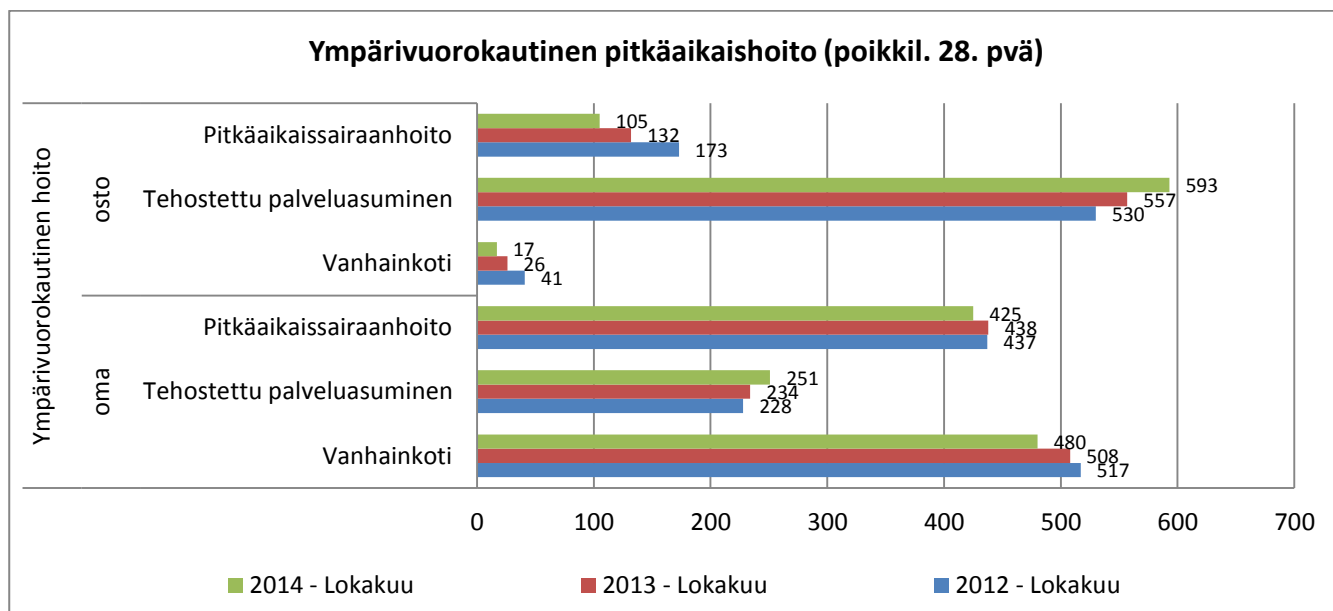




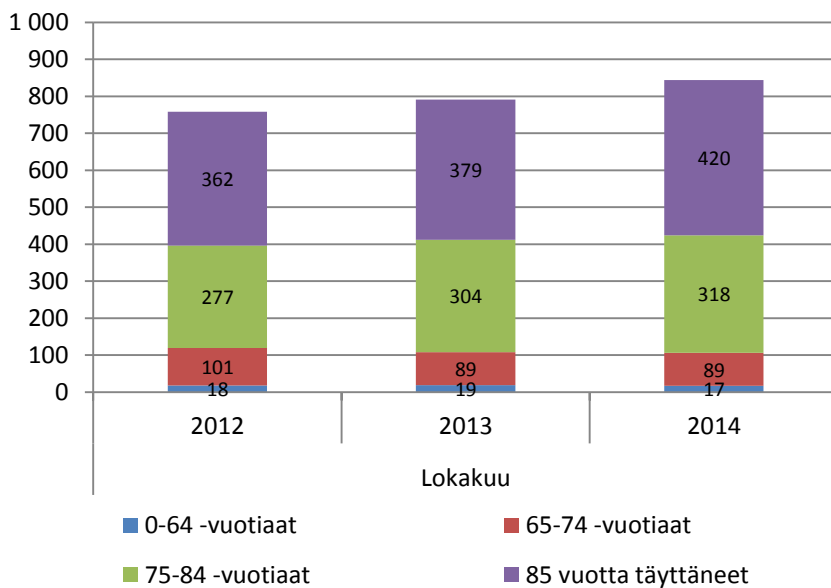
Geriatrinen sairaalahoito

Huom! Pegasos-päivityksen yhteydessä hoitojaksojen käsittely muuttunut, asian selvittely kesken. Päättyneiden hoitojaksojen määriä ja hoitojaksojen keskimääräisiä pituuksia ei siksi esitetä raportilla.

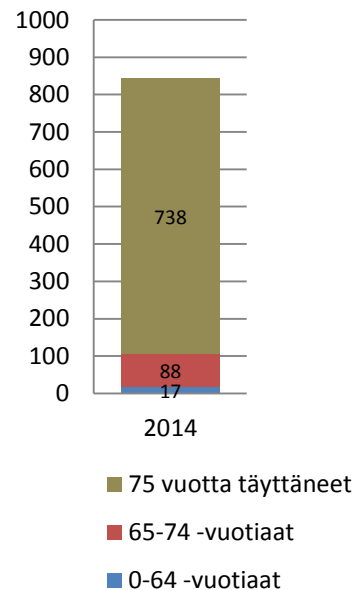
Ympäri vuorokautinen hoito



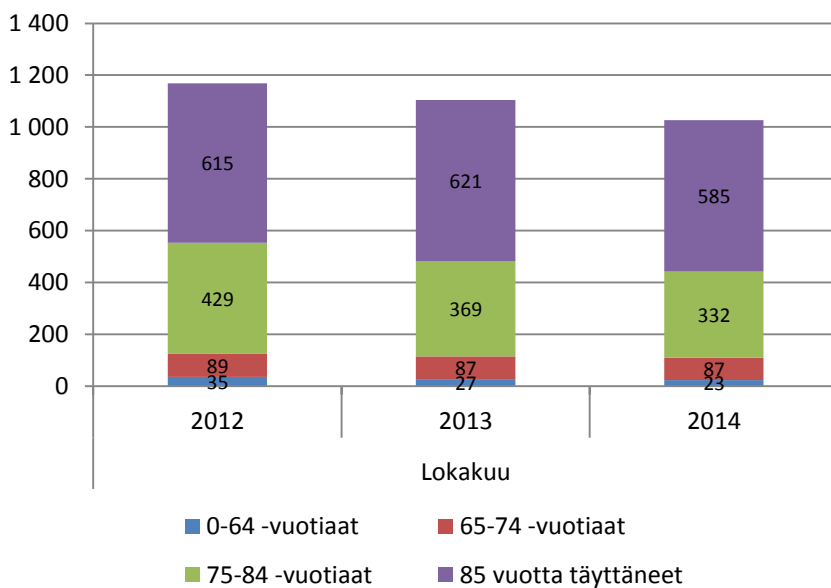
Tehostetun palveluasumisen asukkaat (poikkil. 28. pvä)



Tavoite: 843



Hoivahoidon asukkaat (poikkil. 28. pvä)



Tavoite: 1057

