

TURKU



HYVINVOINTITOIMIALA

# Kuukausiseuranta

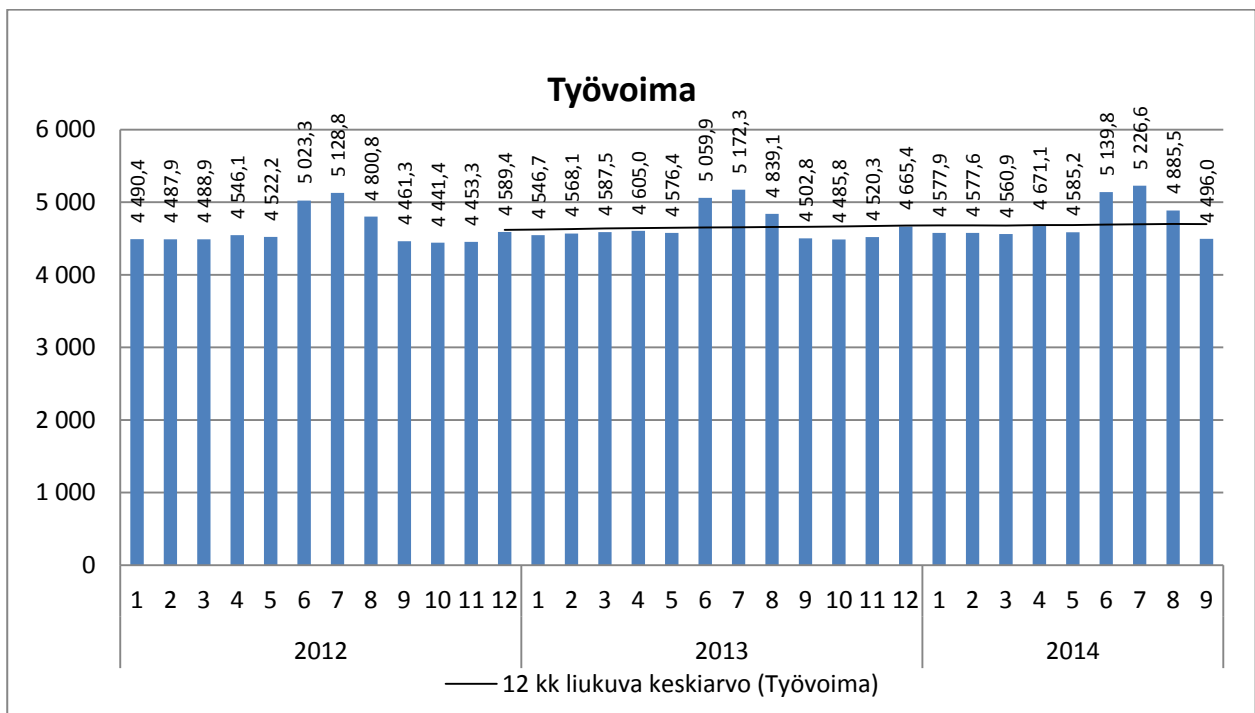
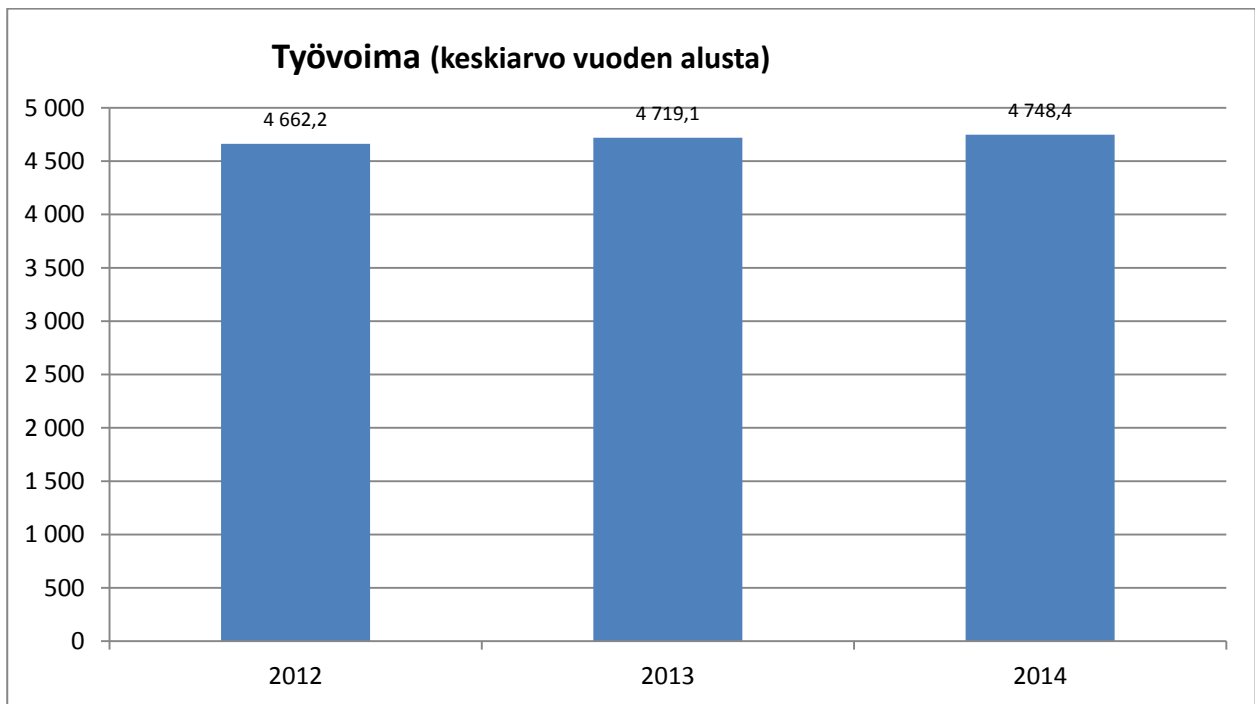
---

*Syyskuu*

15.10.2014

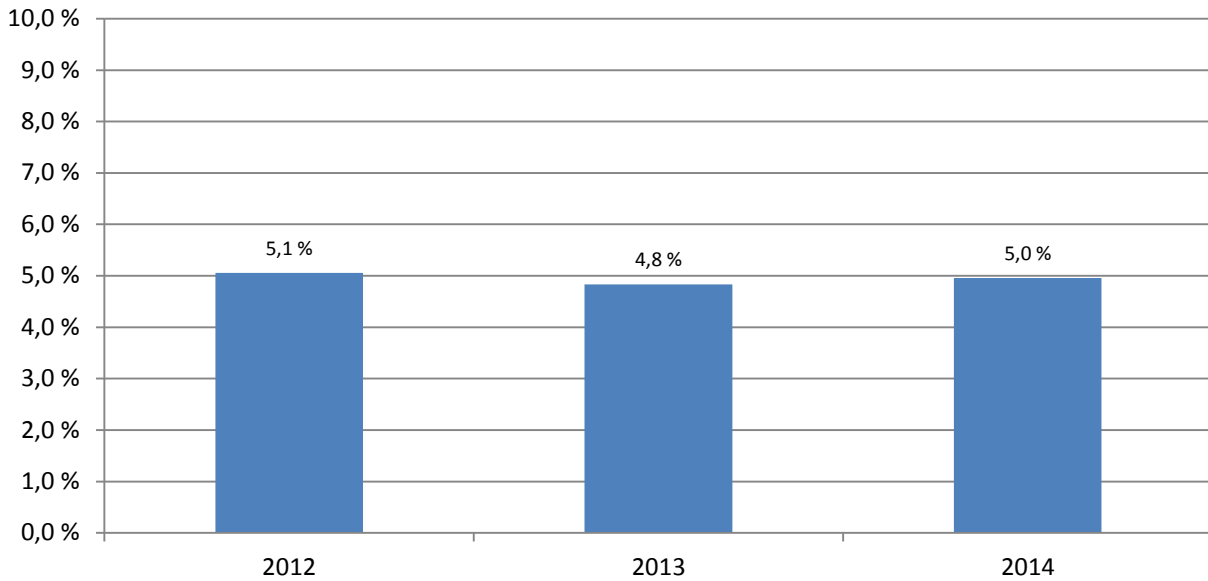
---

## HYVINVOINTITOIMIALA

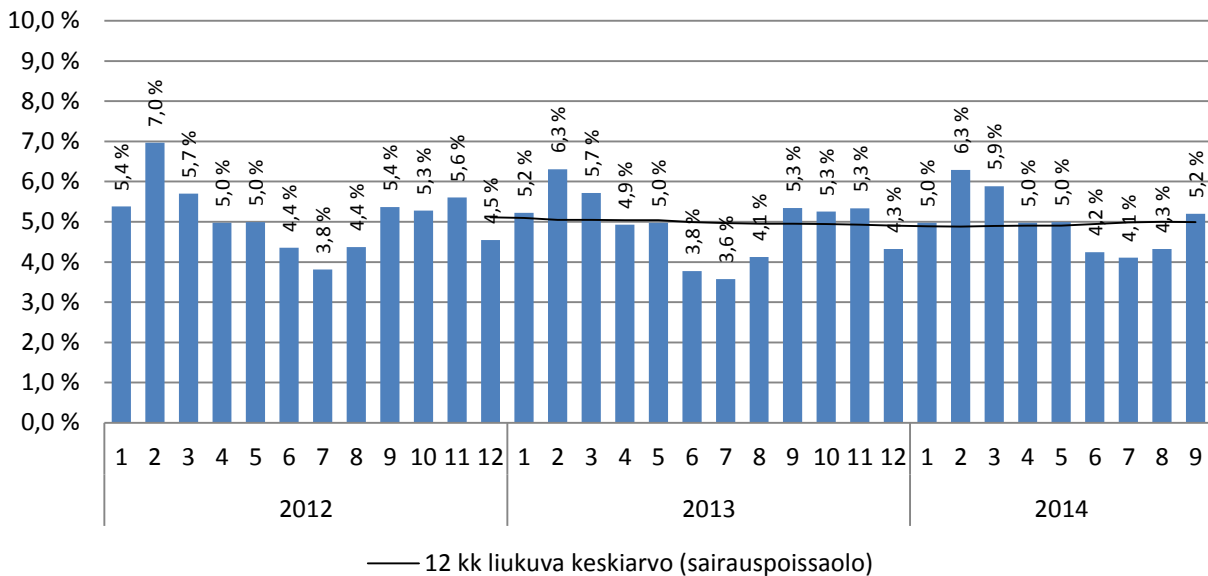


Huom! Vuoden 2012 organisaatiosta poistettu työterveyshuolto ja ympäristöterveydenhuolto. Keskiarvo vuoden alusta näyttää vertailun vastaavaan ajankohtaan muina vuosina. Henkilöstötiedot päivitetty 4.10.2014.

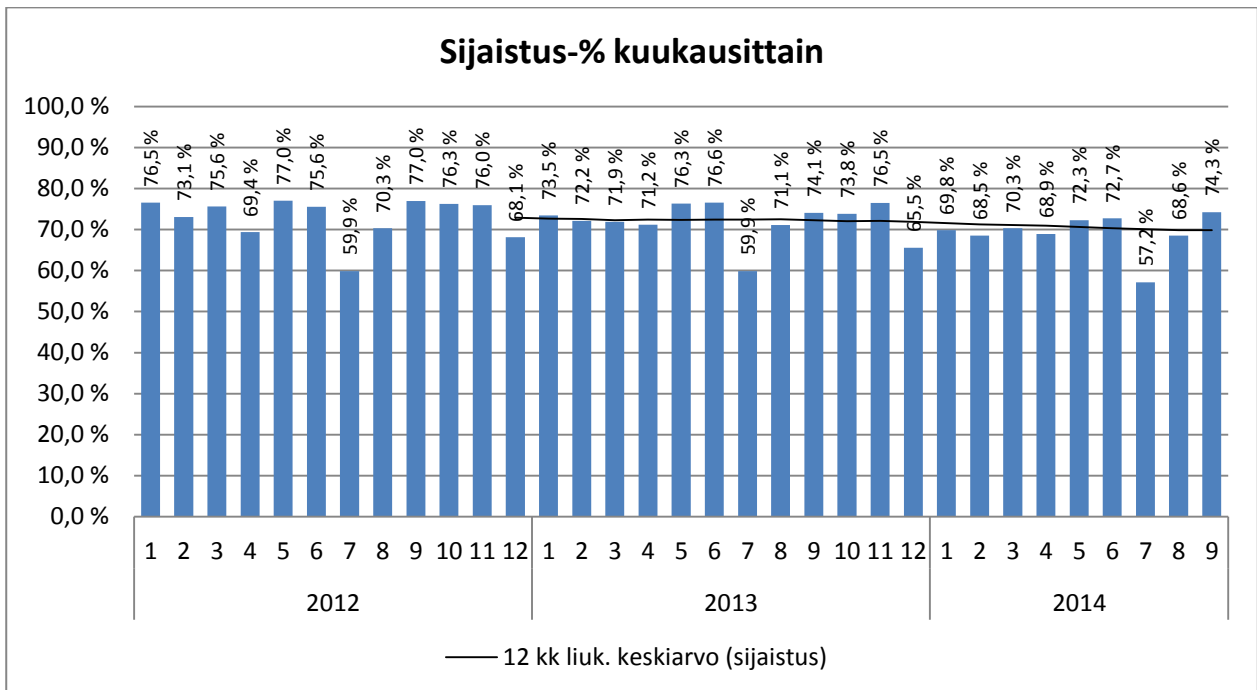
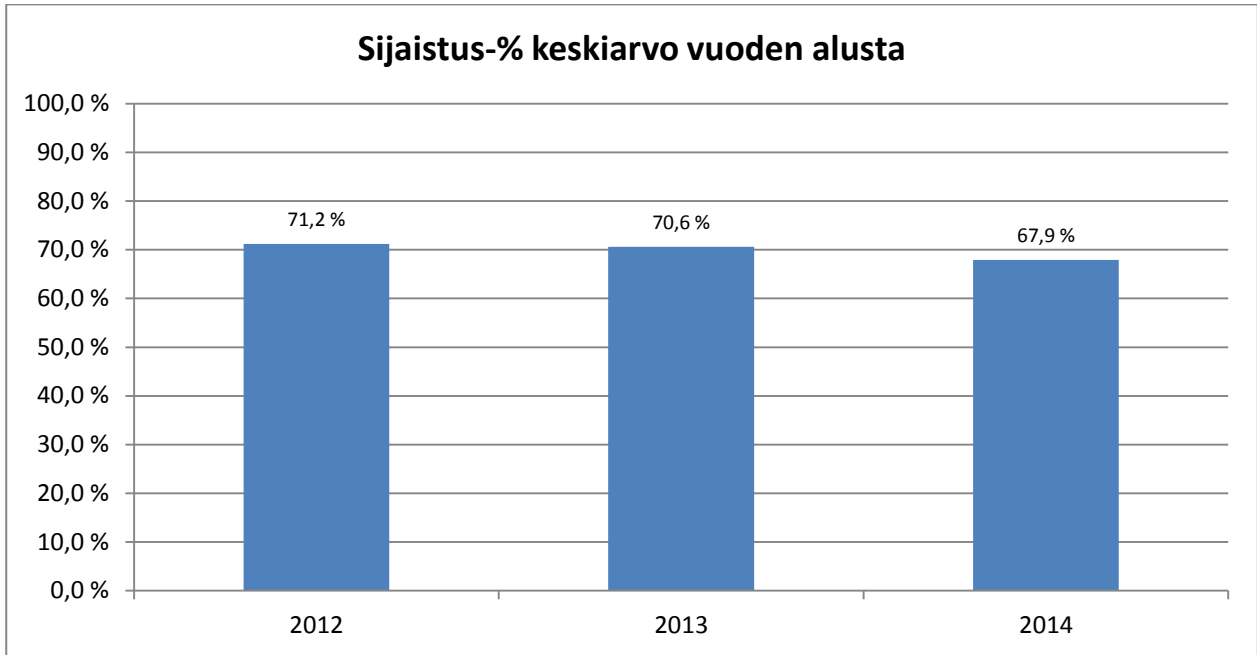
### Sairauspoissaolo keskiarvo vuoden alusta



### Sairauspoissaolo-%

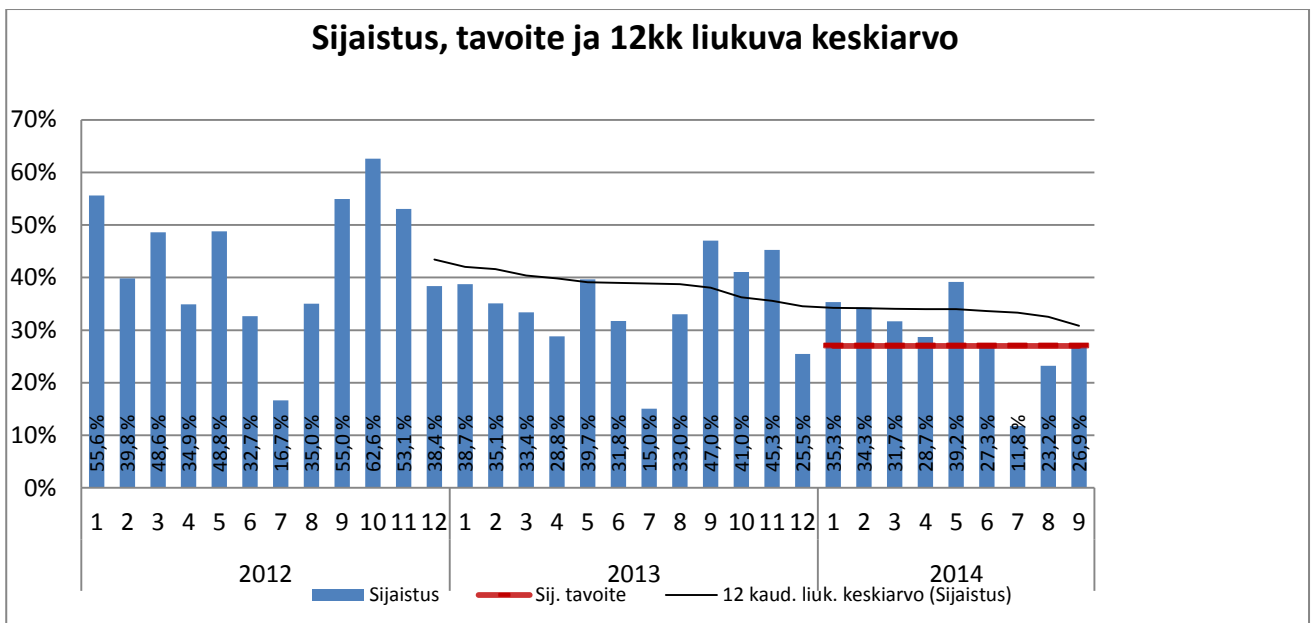
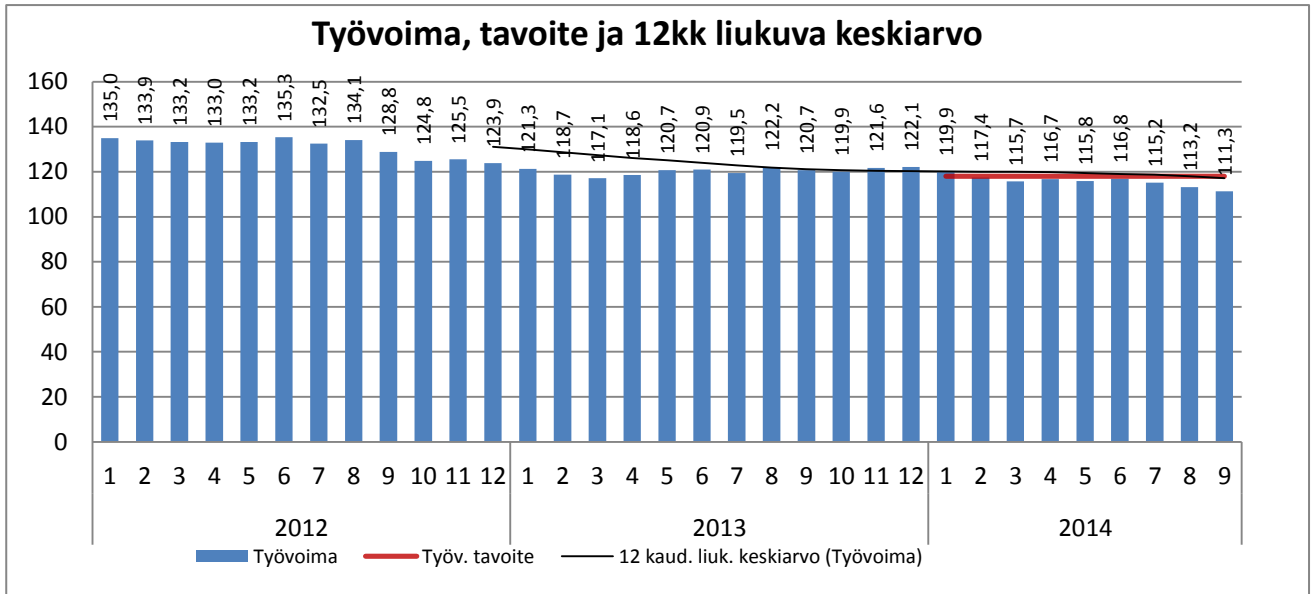


Huom! Vuoden 2012 organisaatiosta poistettu työterveyshuolto ja ympäristöterveydenhuolto. Keskiarvo vuoden alusta näyttää vertailun vastaavaan ajankohtaan muina vuosina. Henkilöstötiedot päivitetty 4.10.2014.

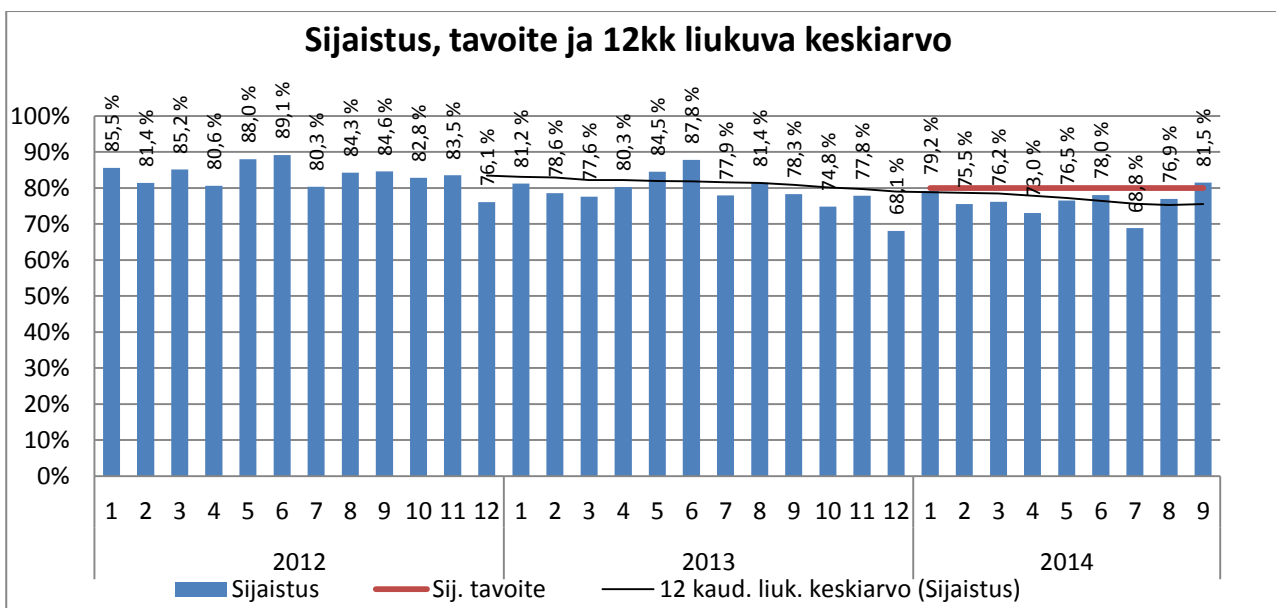
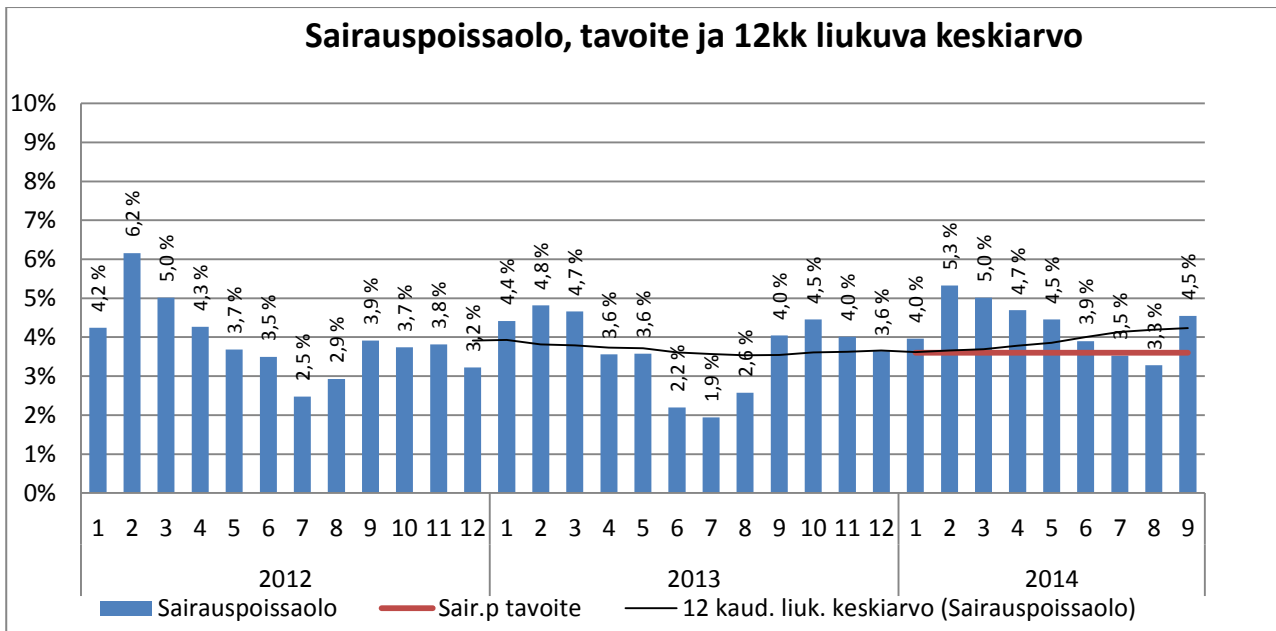
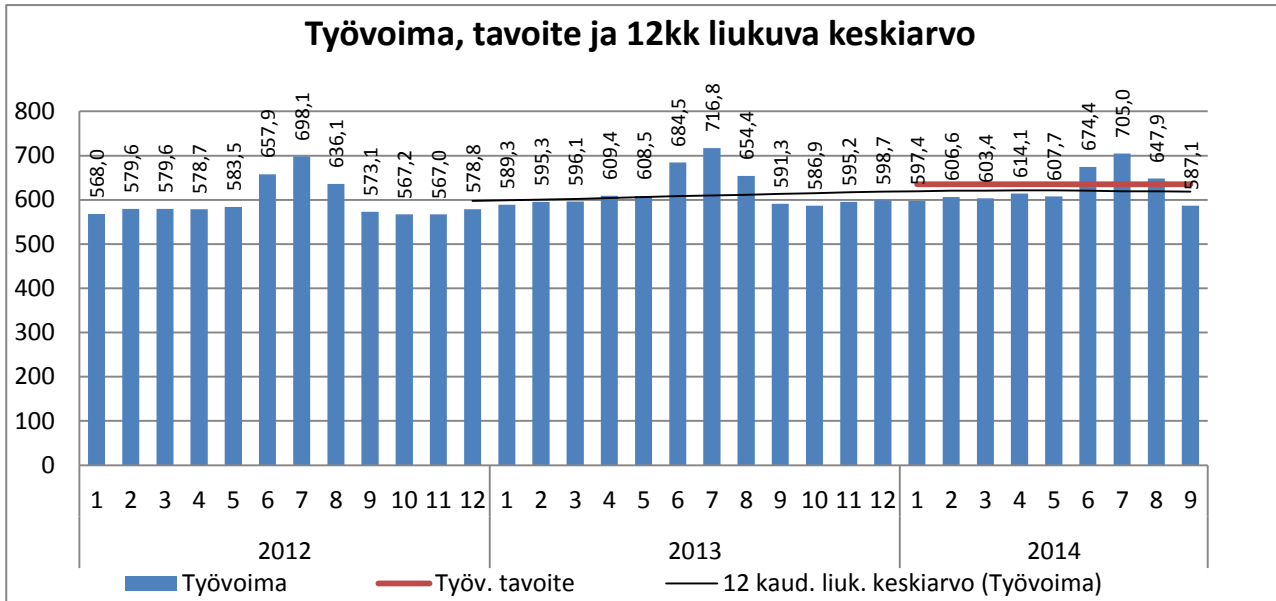


Huom! Vuoden 2012 organisaatiosta poistettu työterveyshuolto ja ympäristöterveydenhuolto. Keskiarvo vuoden alusta näyttää vertailun vastaavaan ajankohtaan muina vuosina. Henkilöstötiedot päivitetty 4.10.2014.

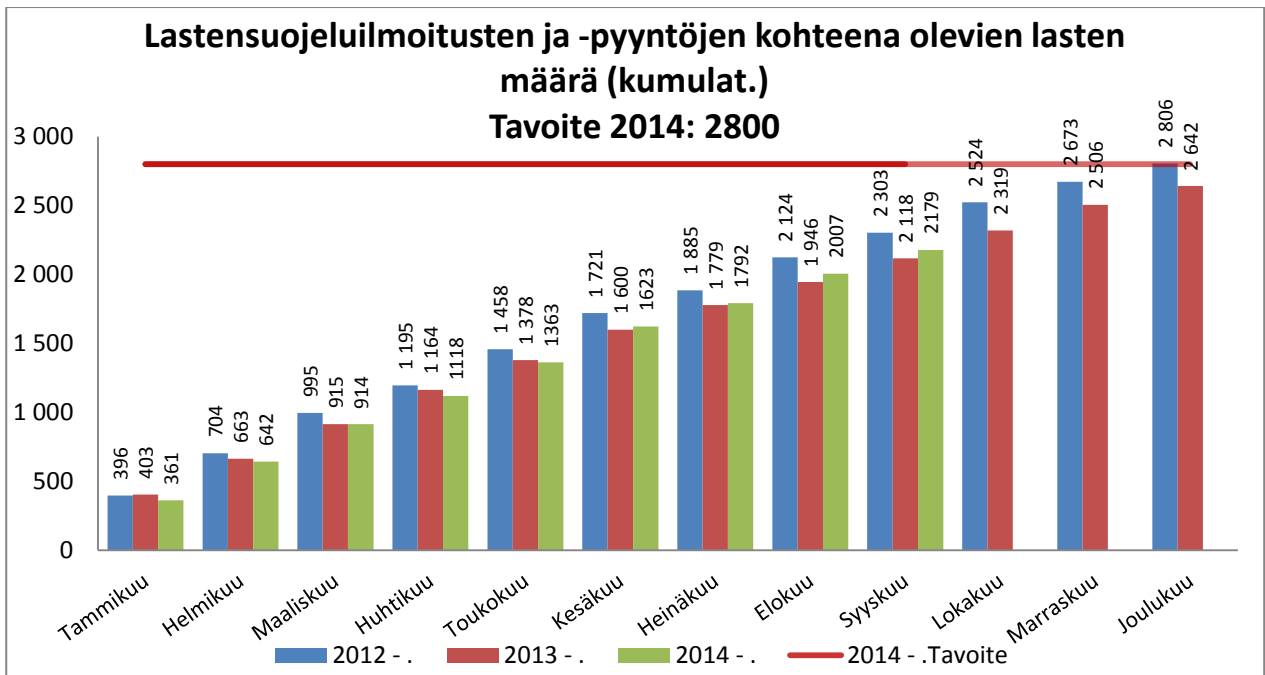
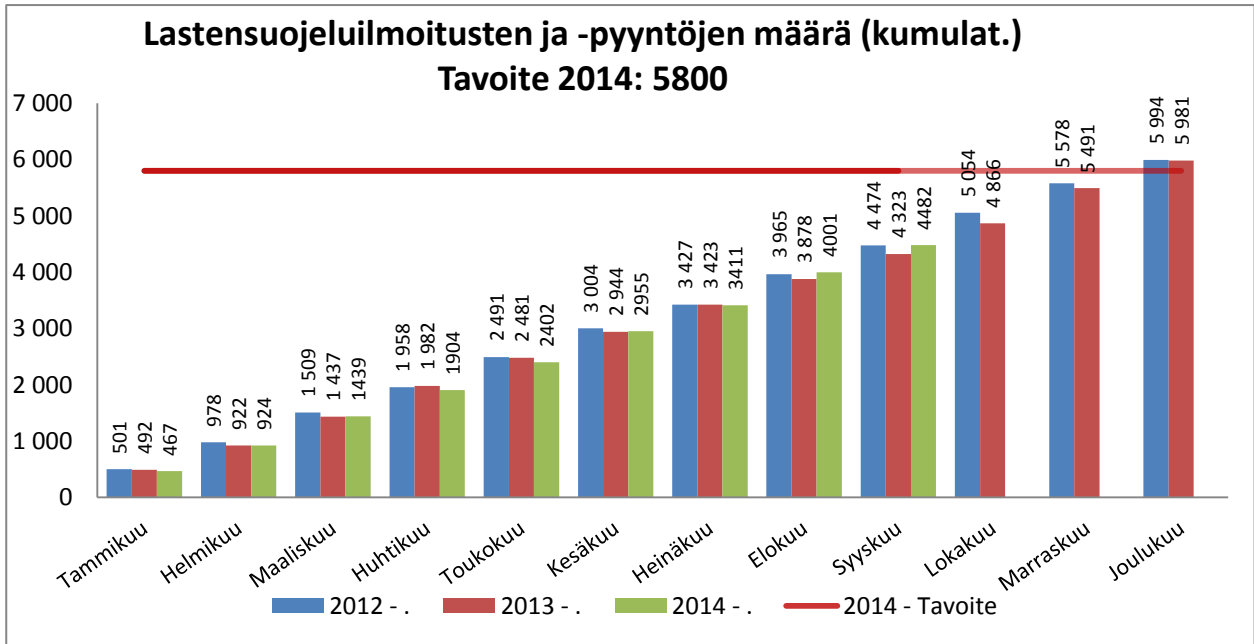
## HALLINTO

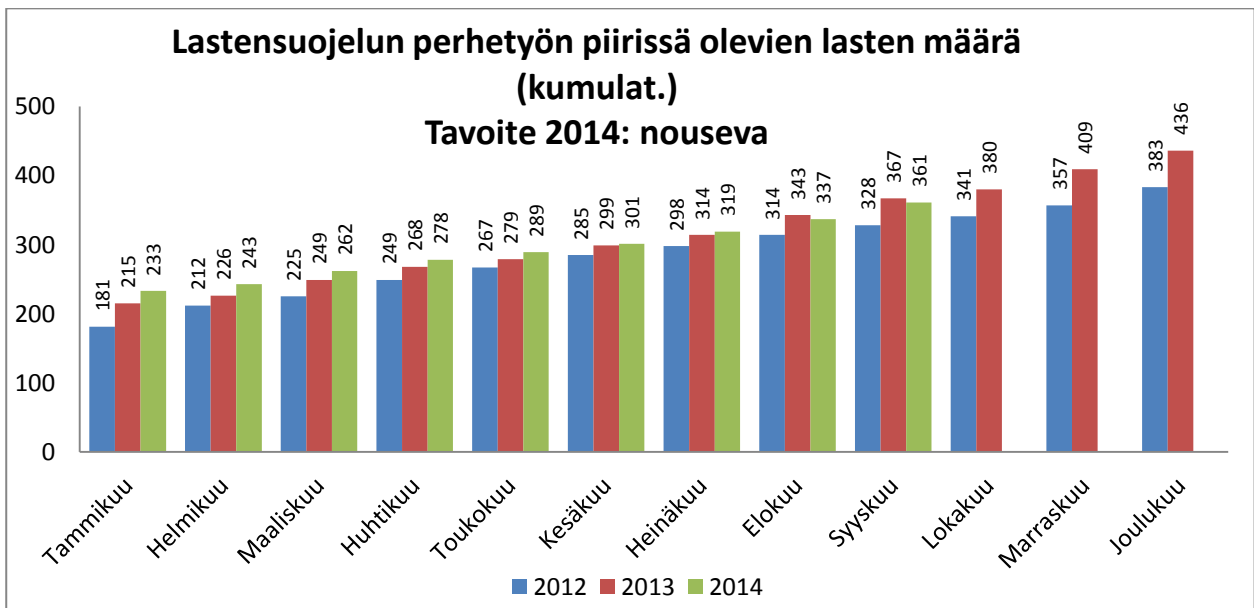
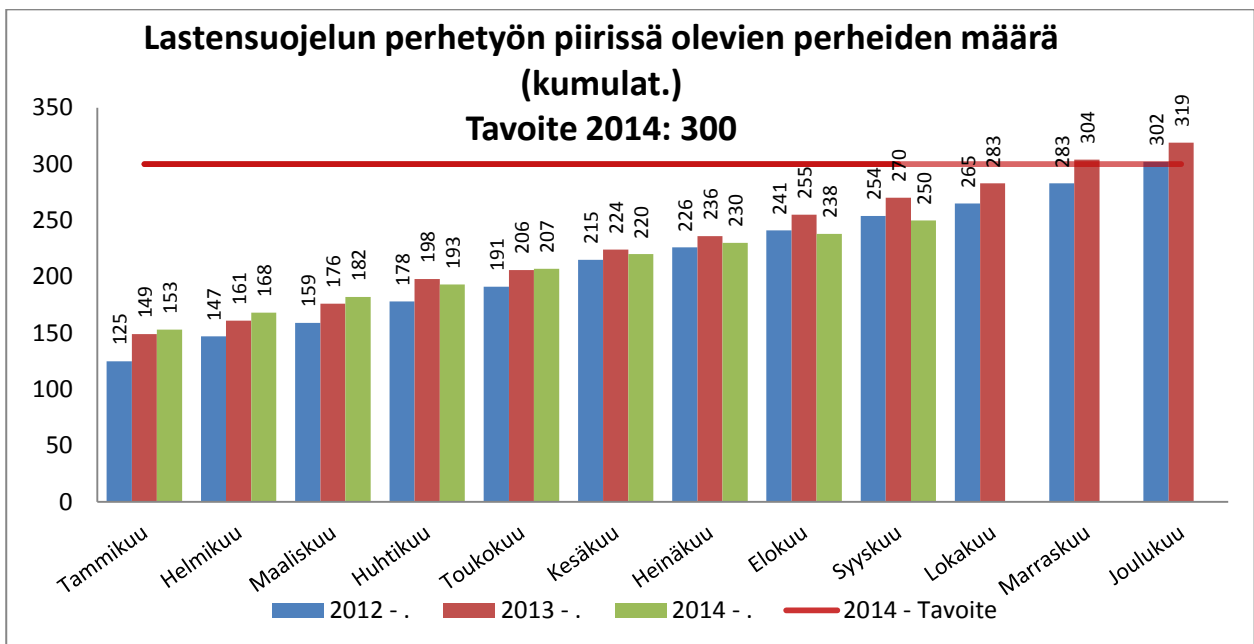
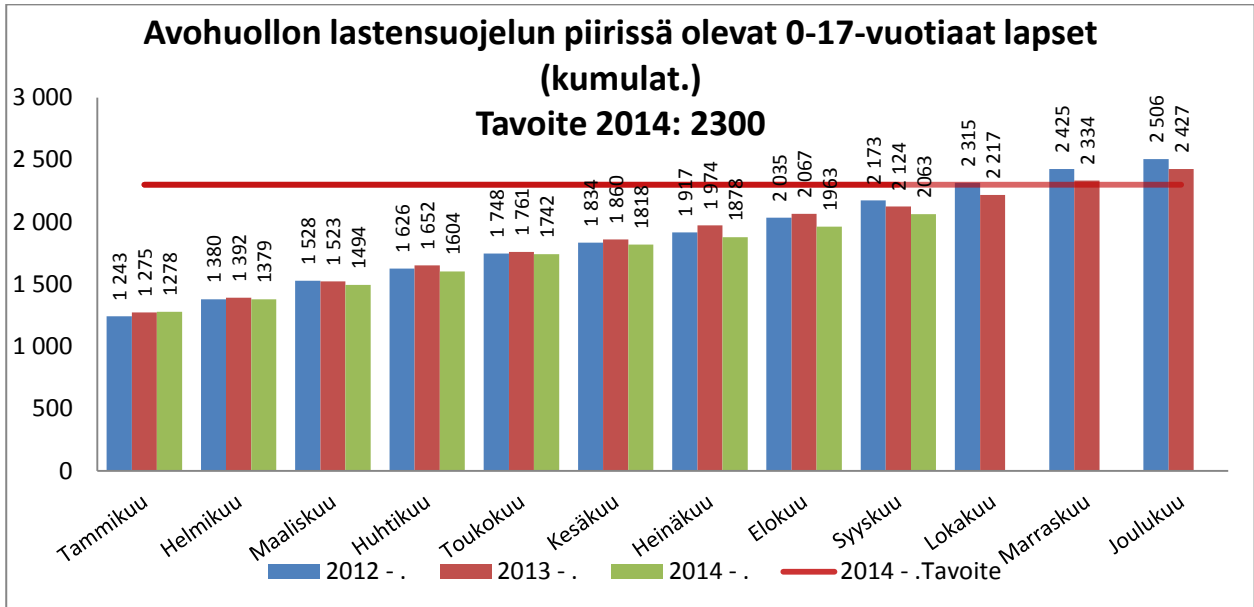


## SOSIAALITYÖ

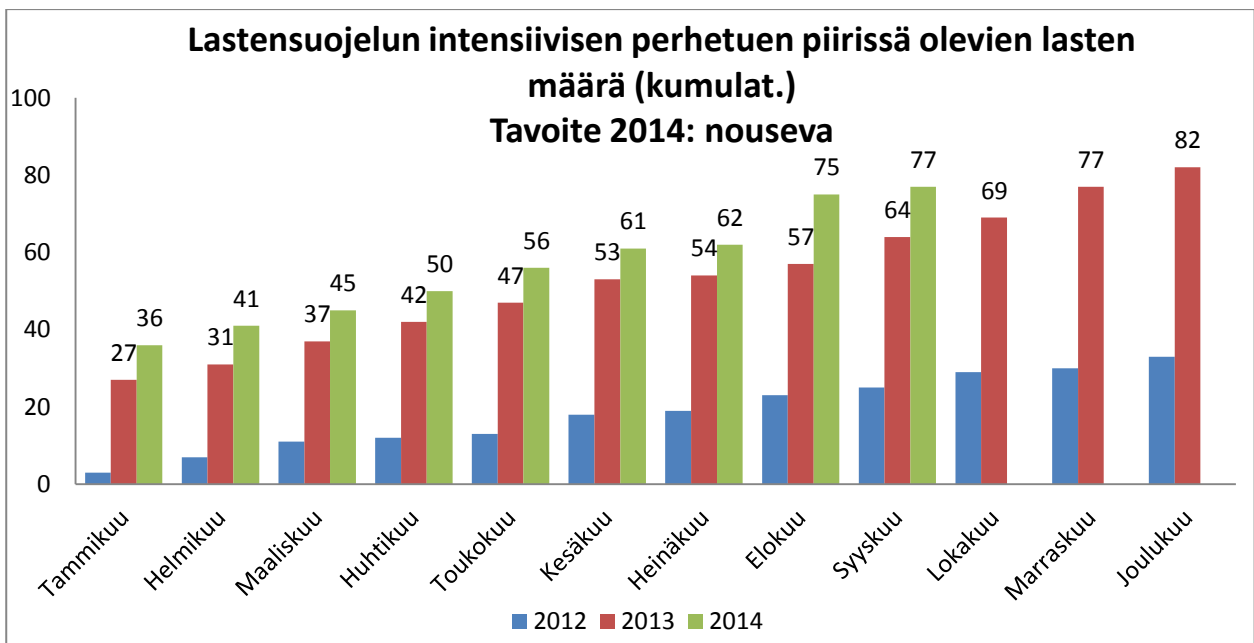
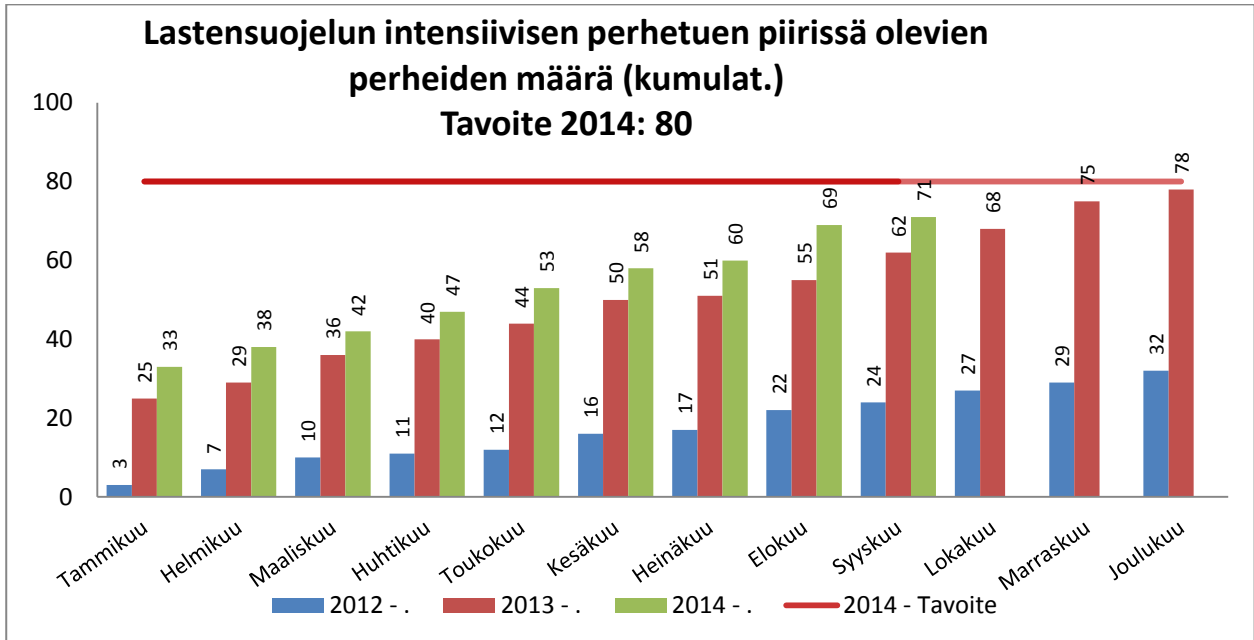


## Avohuollon sosiaalityö



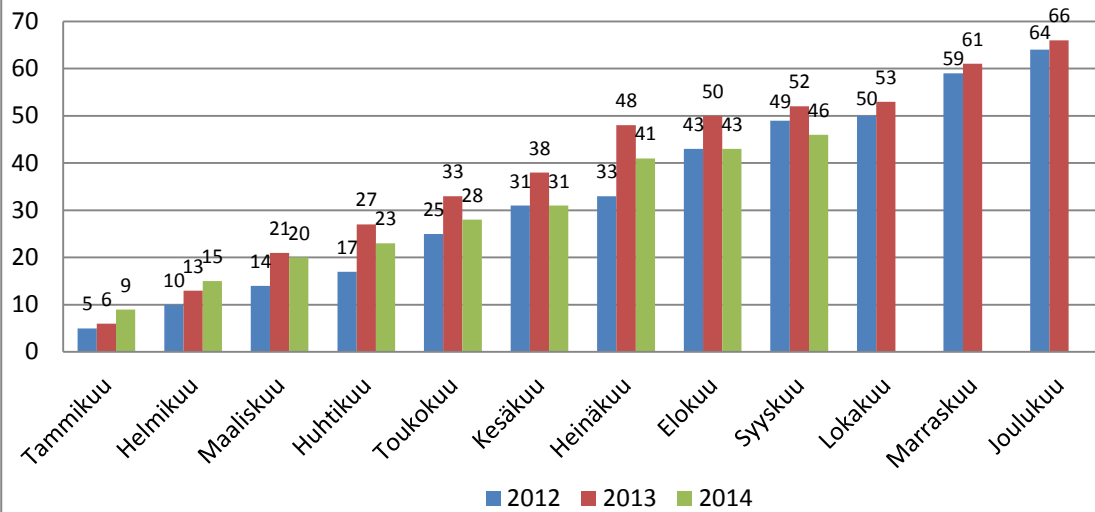




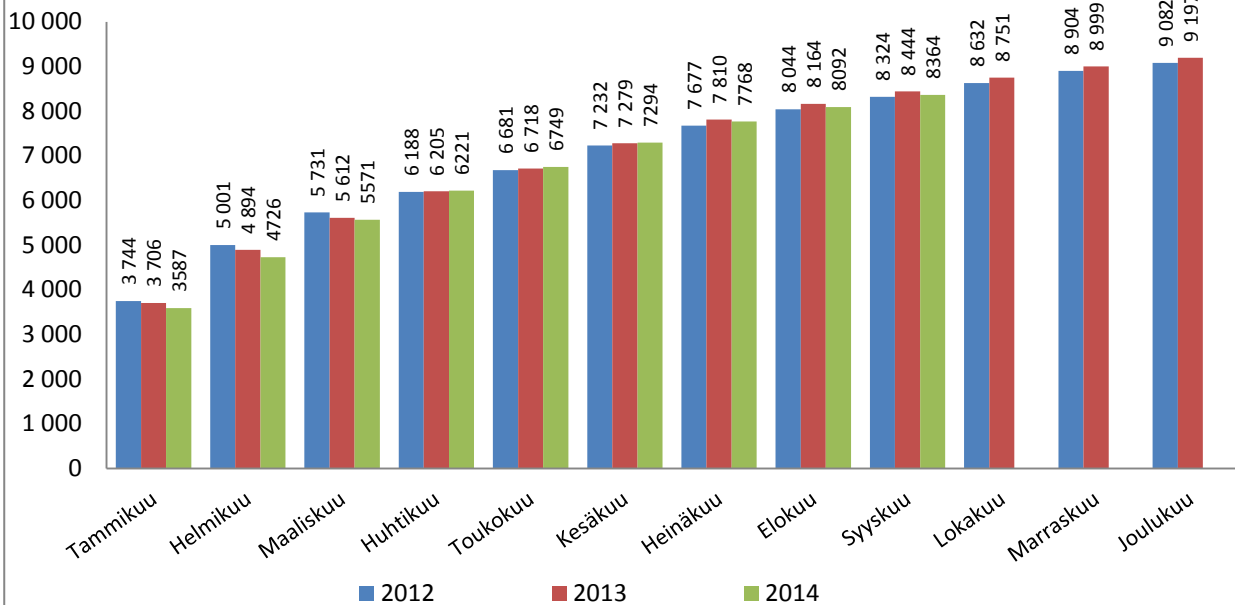


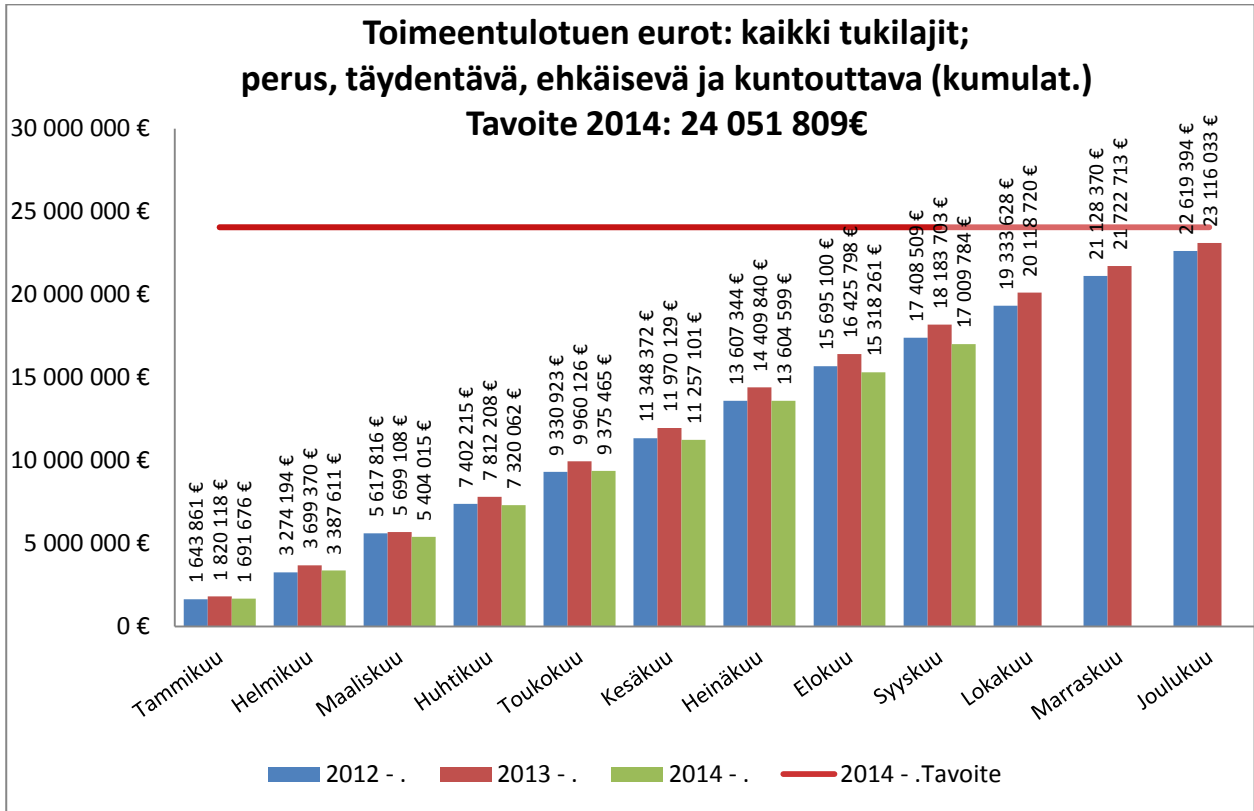
## Uusien huostaanotettujen lasten määrä (kumulat.)

Tavoite 2014: laskeva

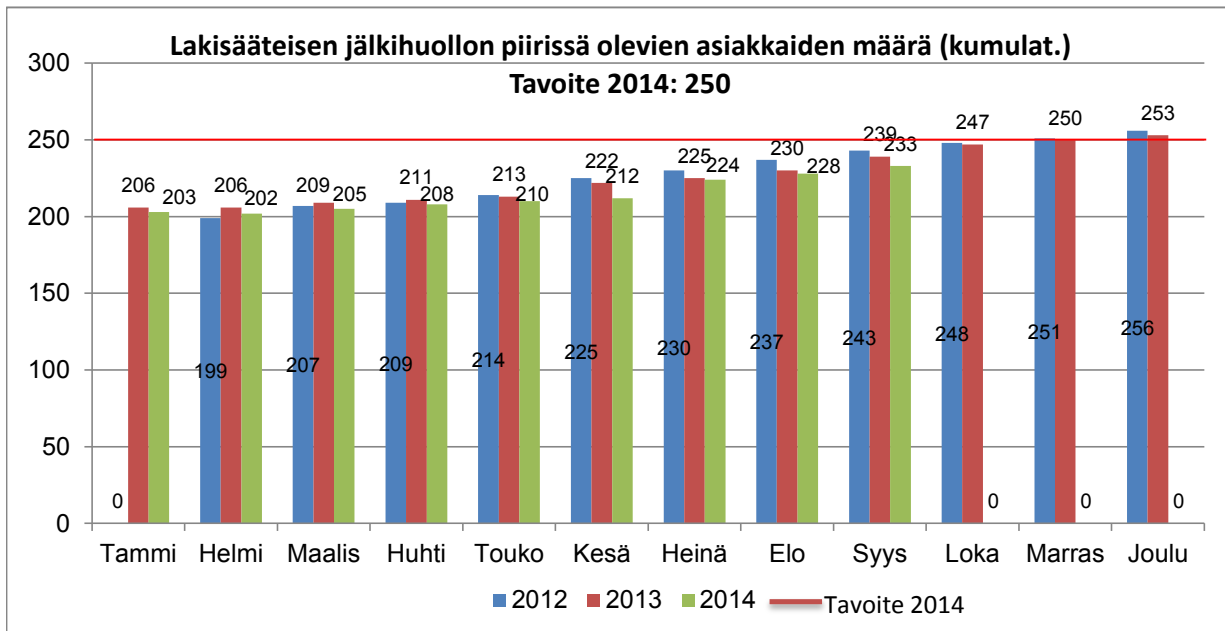
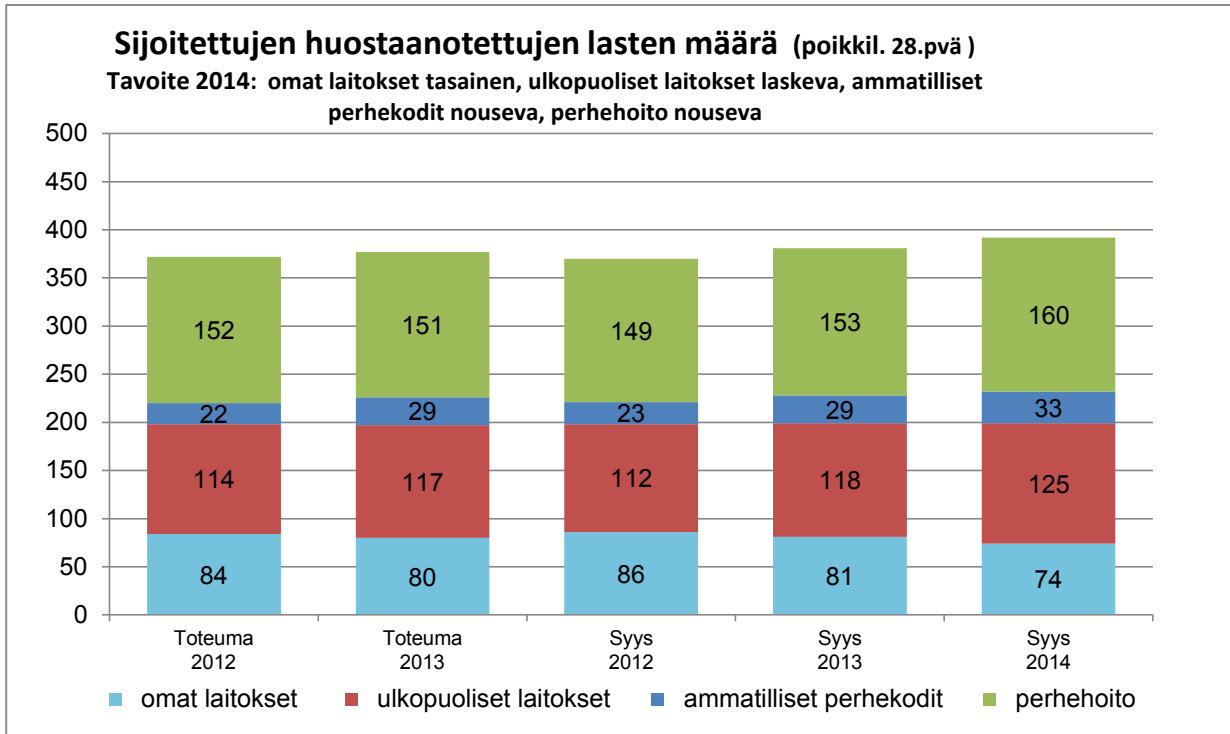


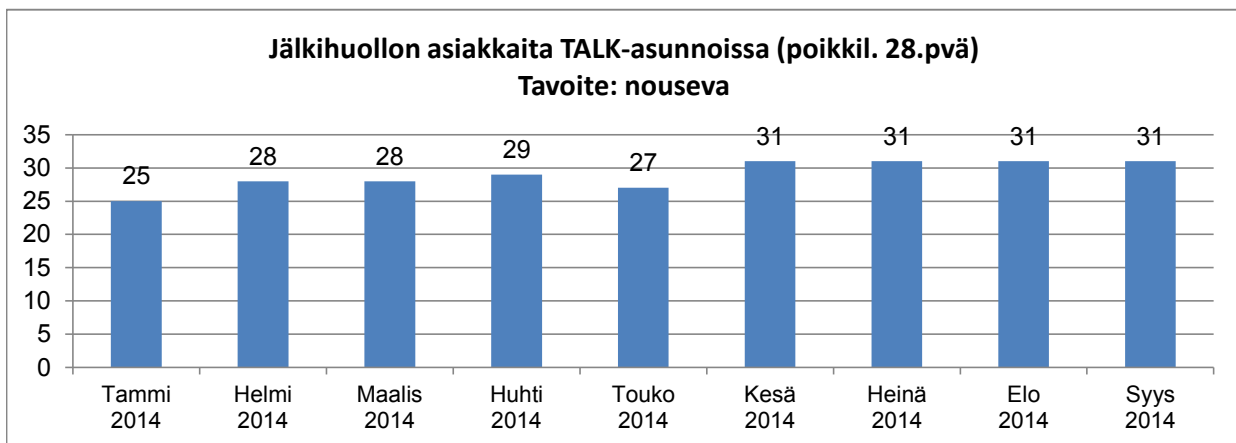
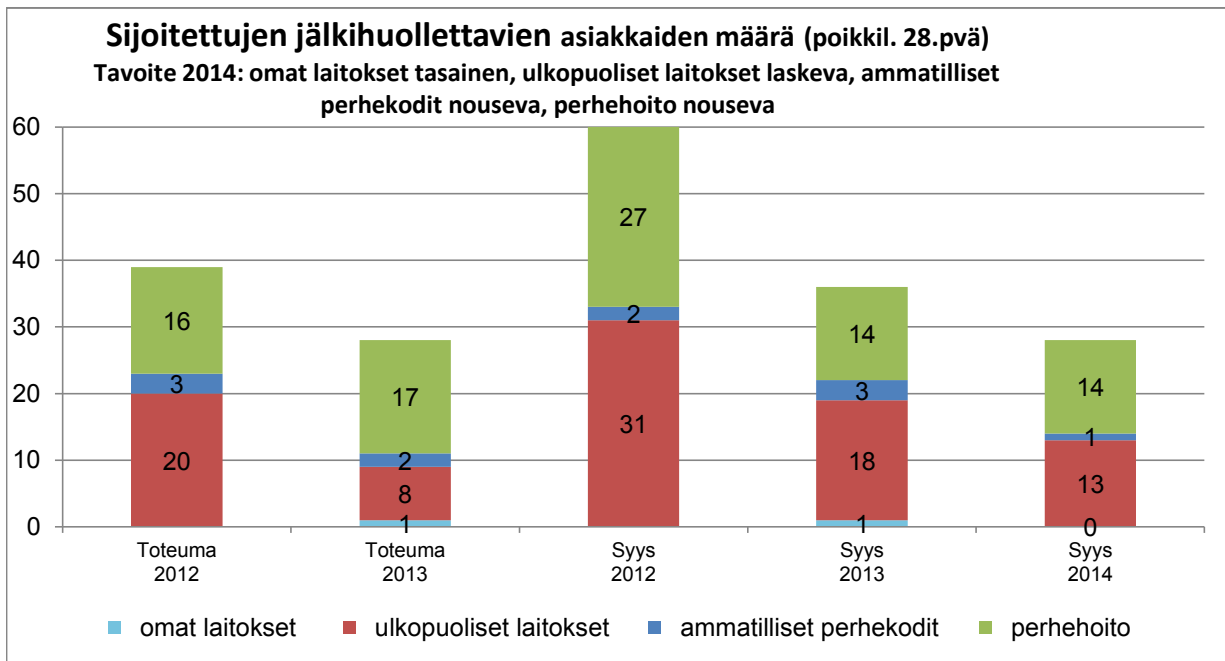
## Toimentulotukea saavien kotitalouksien määrä (kumulat.)



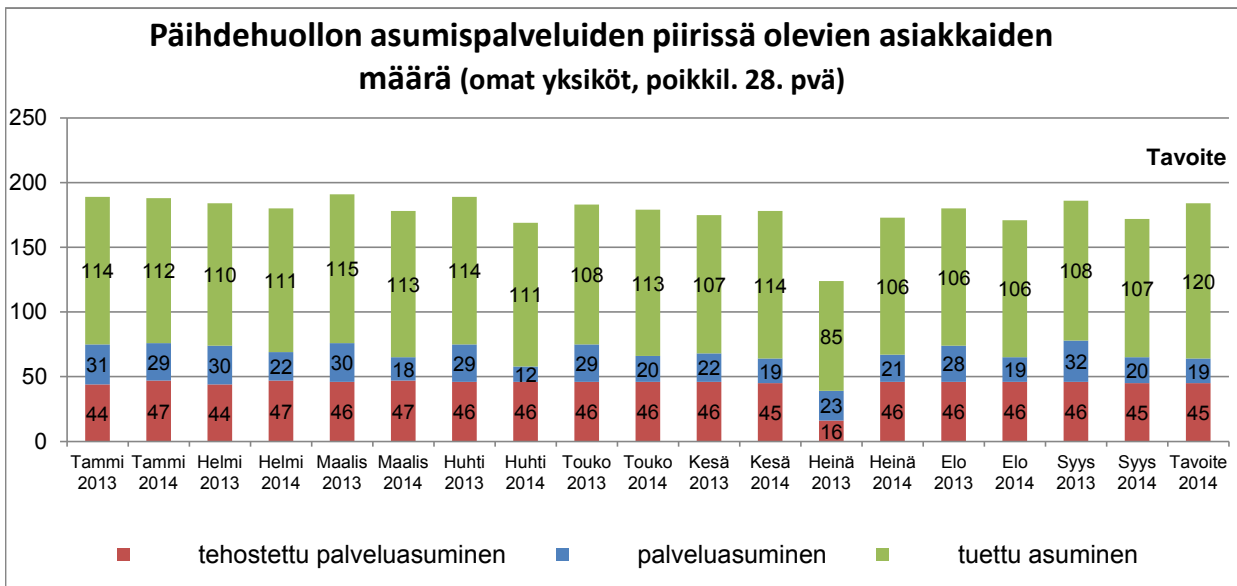
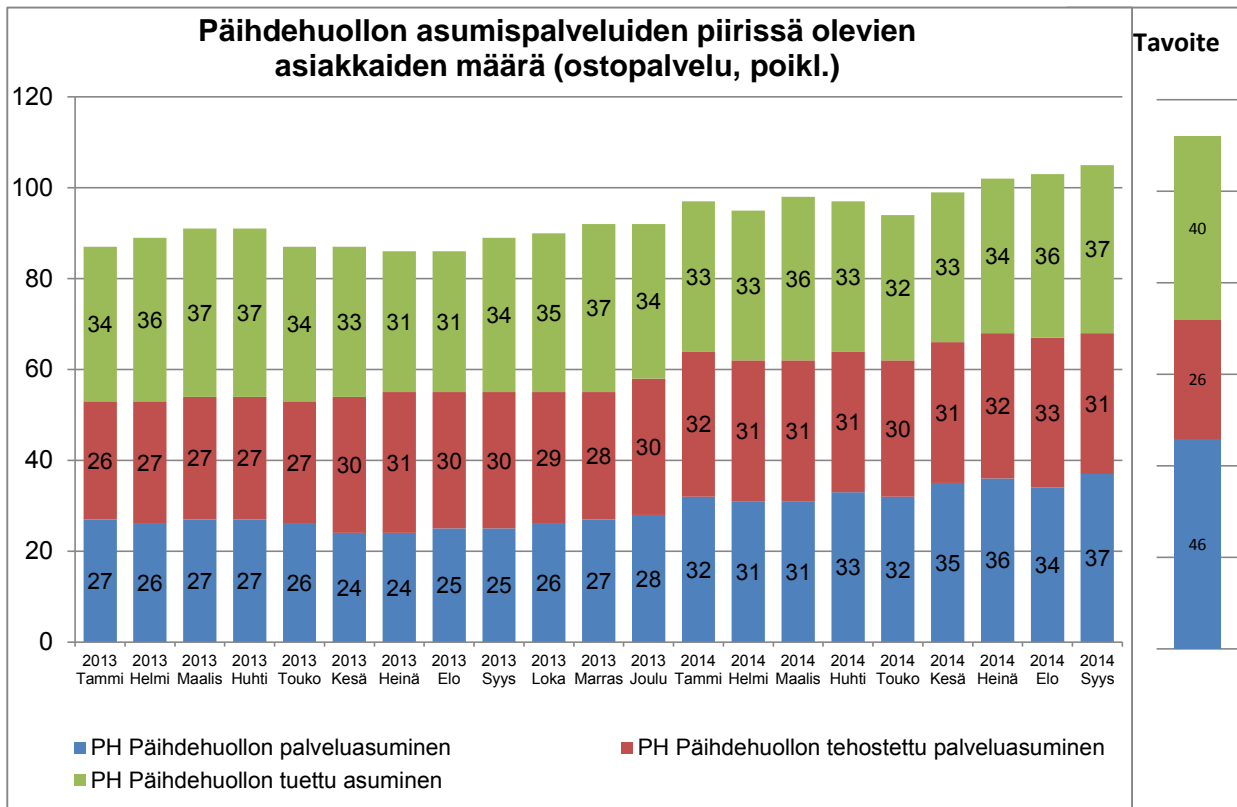


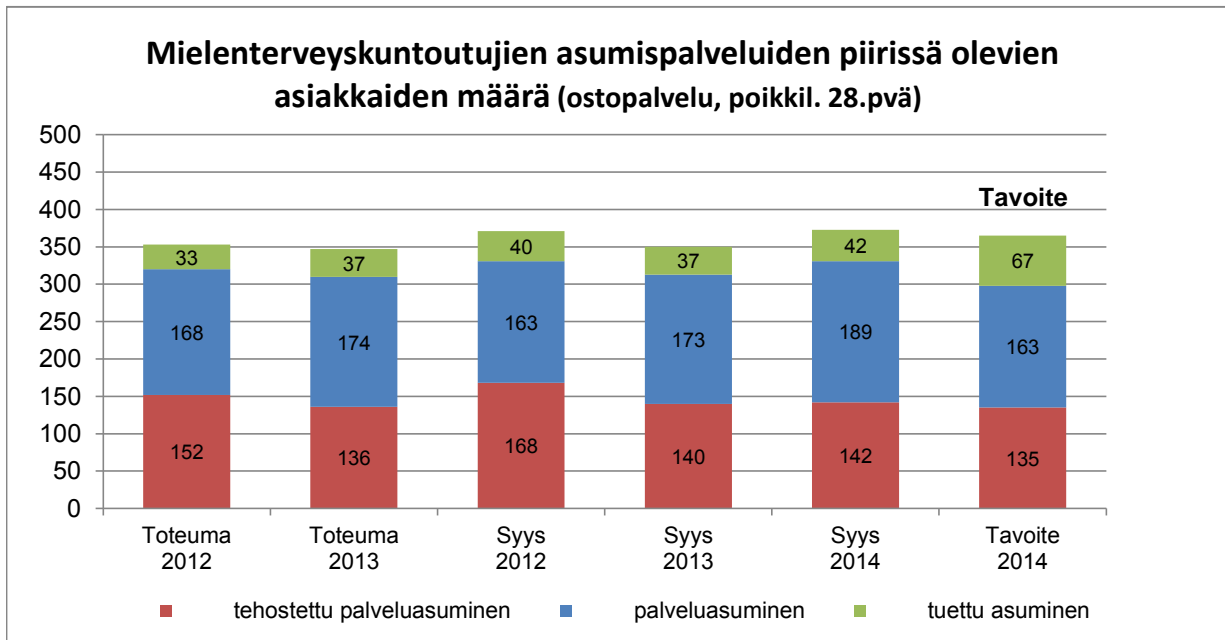
## Sijaishuollon sosiaalityö



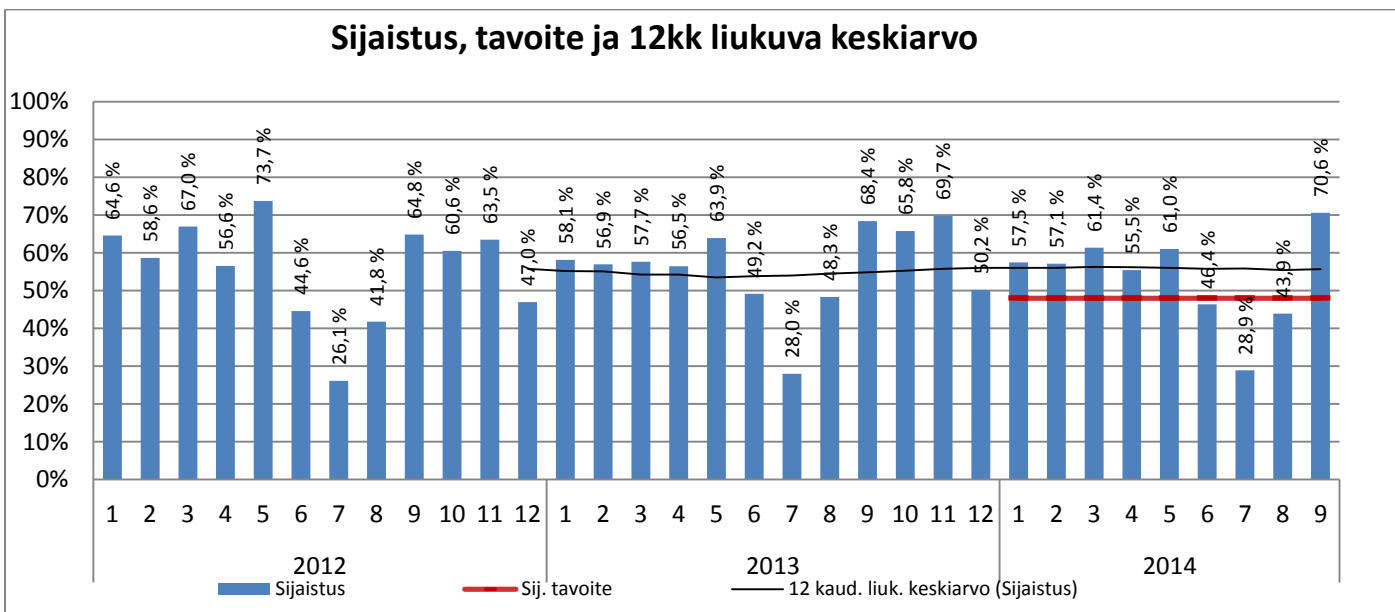
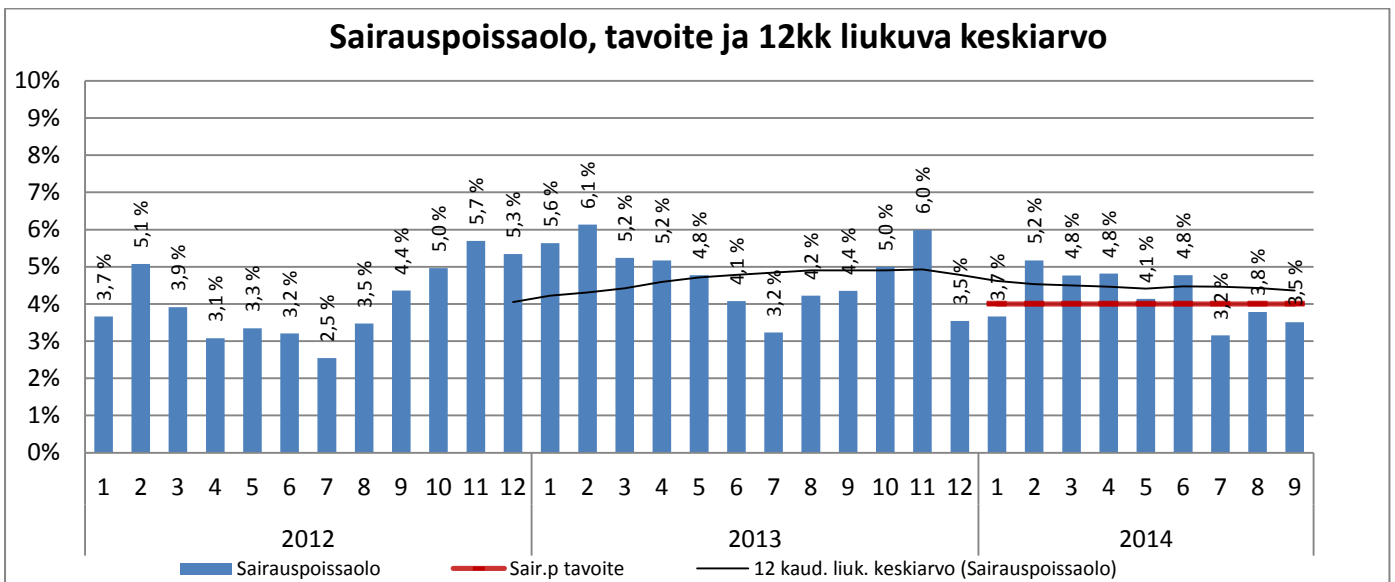
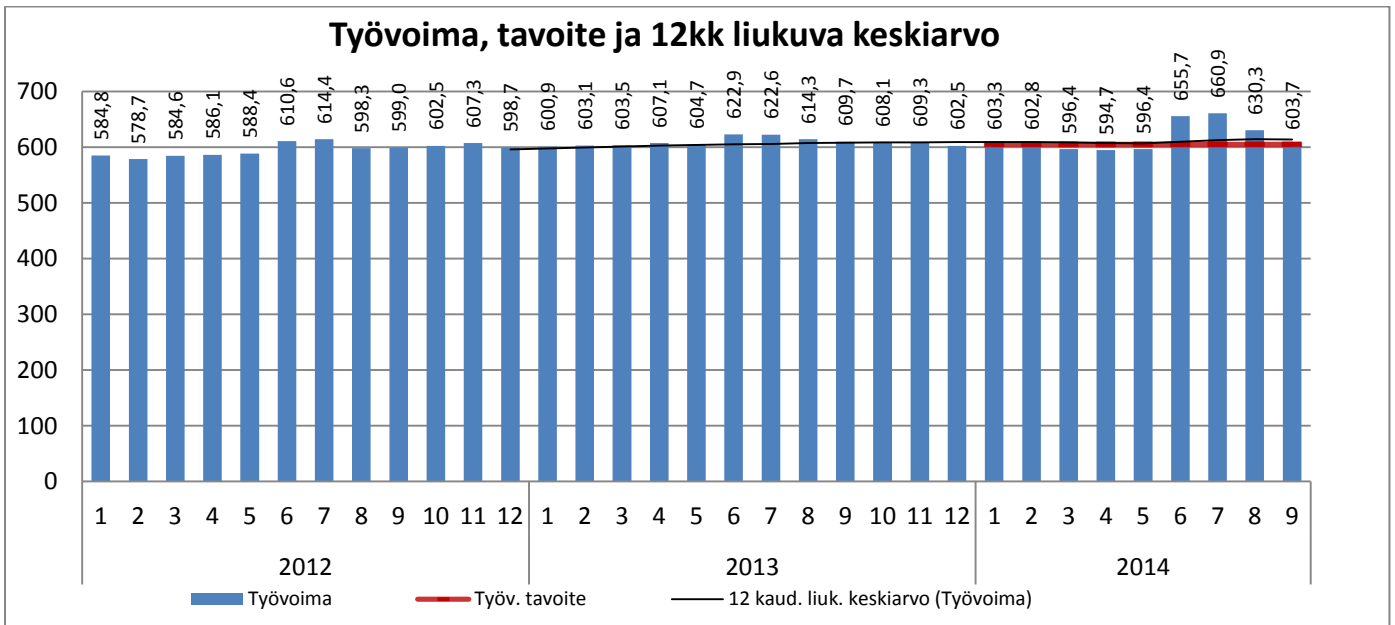


## Sosiaalityön erityispalvelut



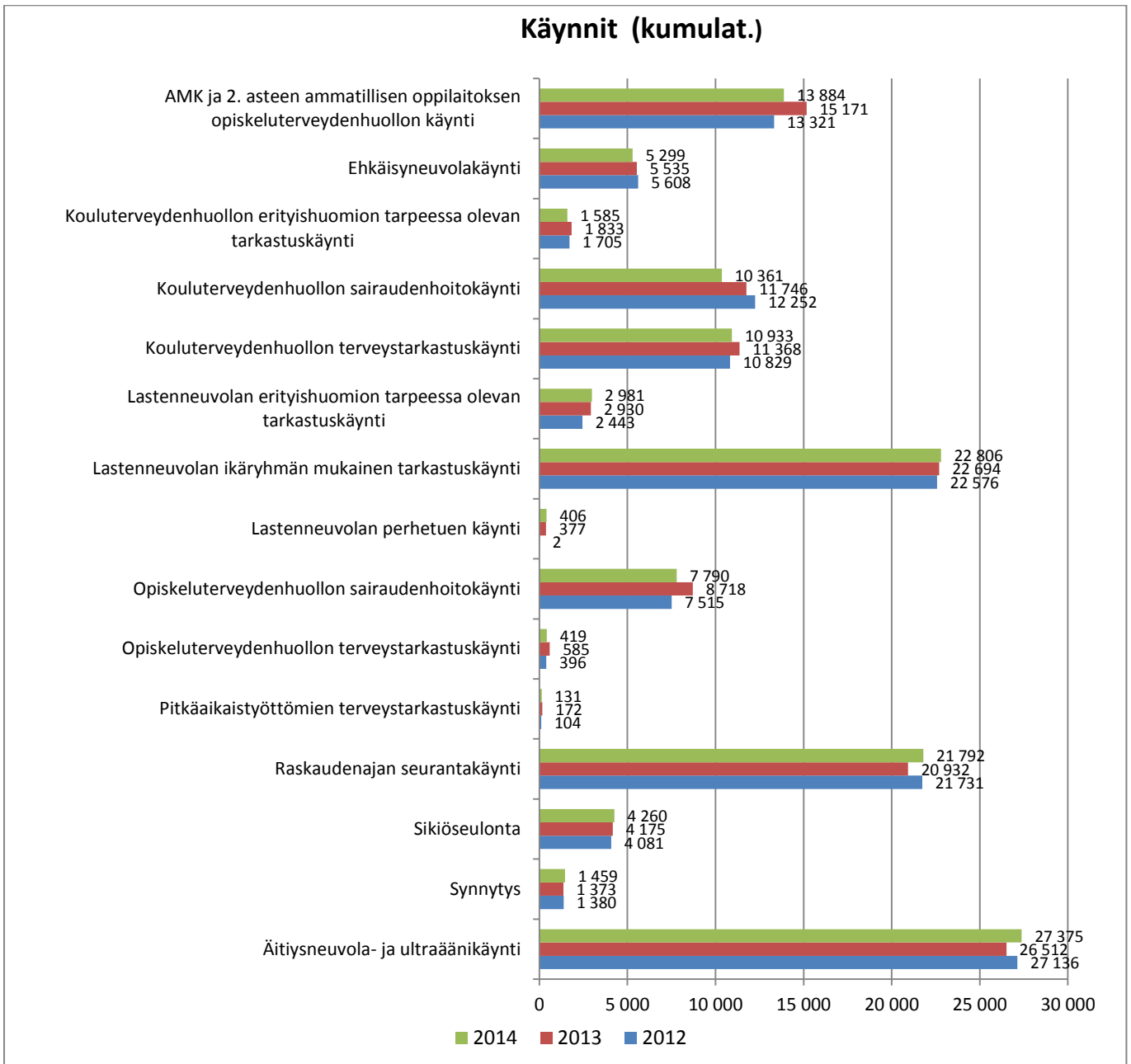


## PERUSTERVEYDENHUOLTO

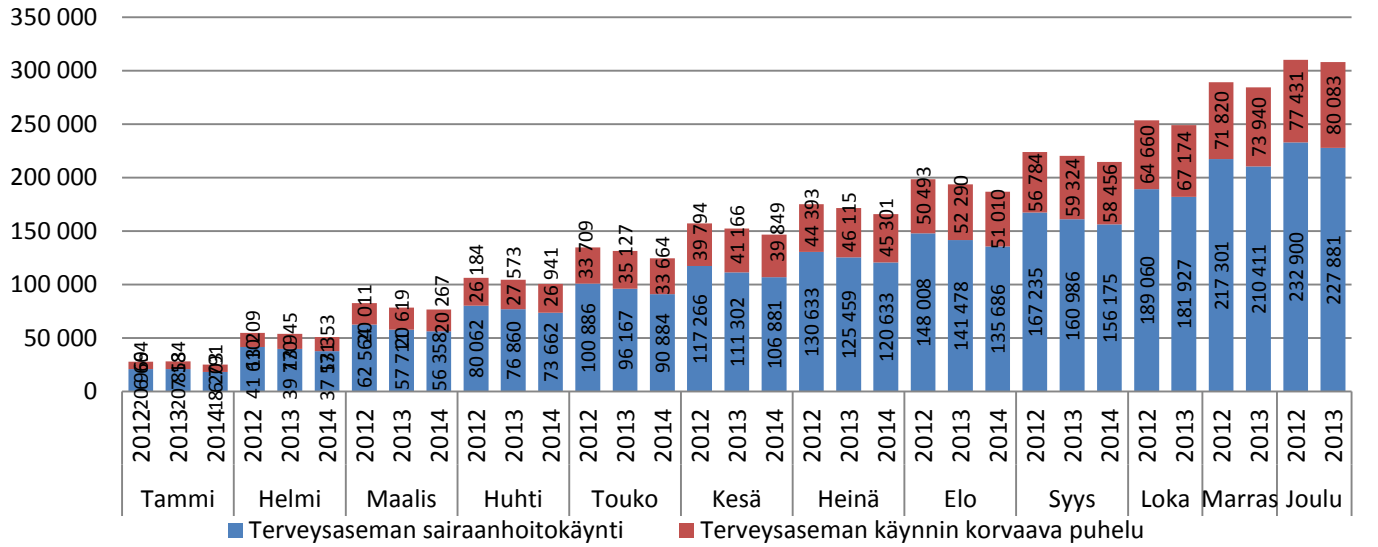


Kumulat. tarkoittaa asiastapahtumien summaa tai eri asiakkaiden määrää vuoden alusta raportointikuukauden loppuun (tammi-syyskuu)

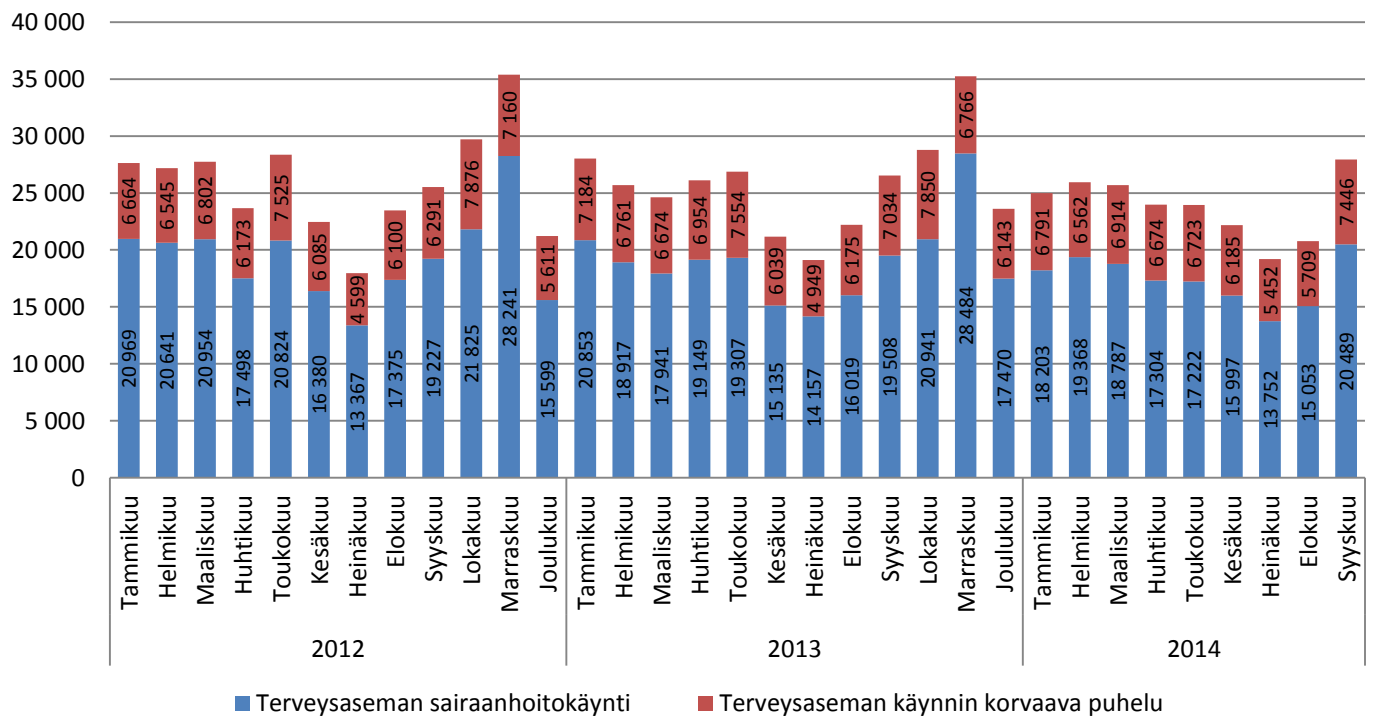




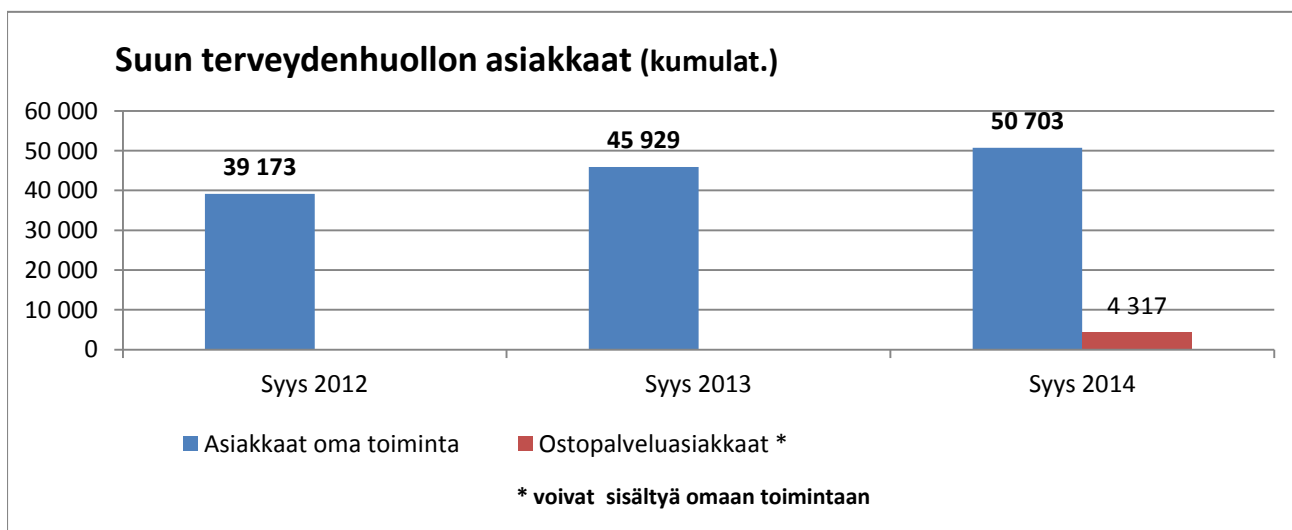
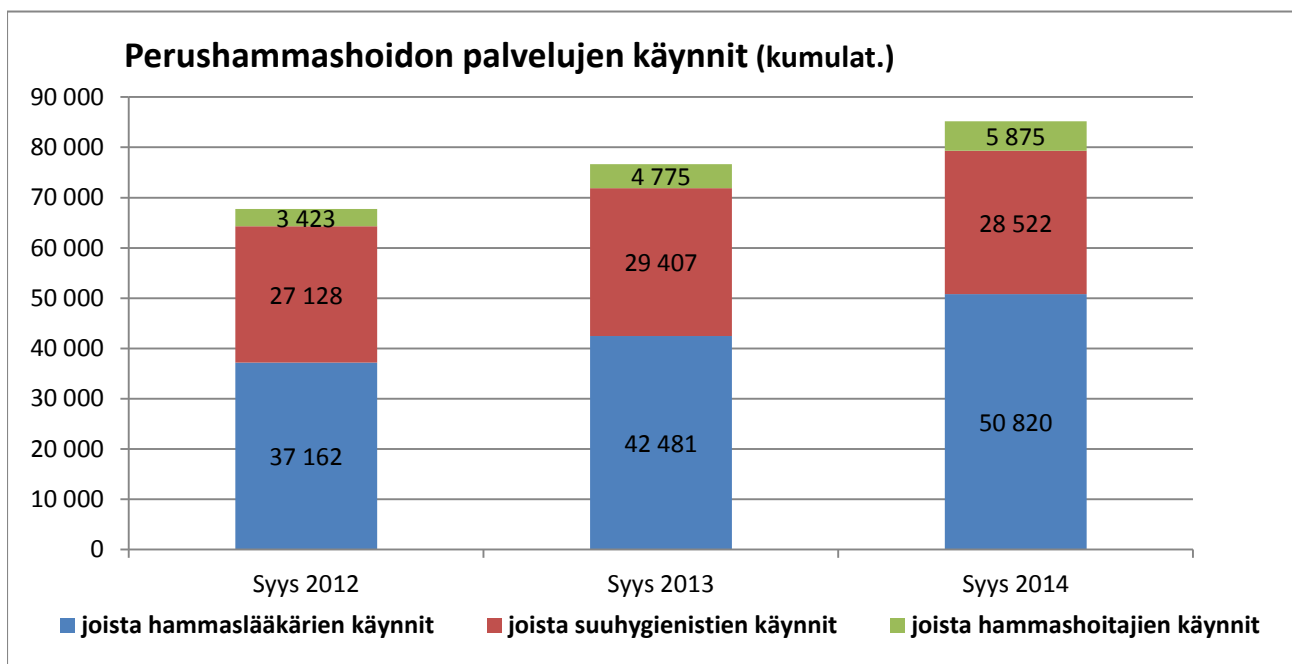
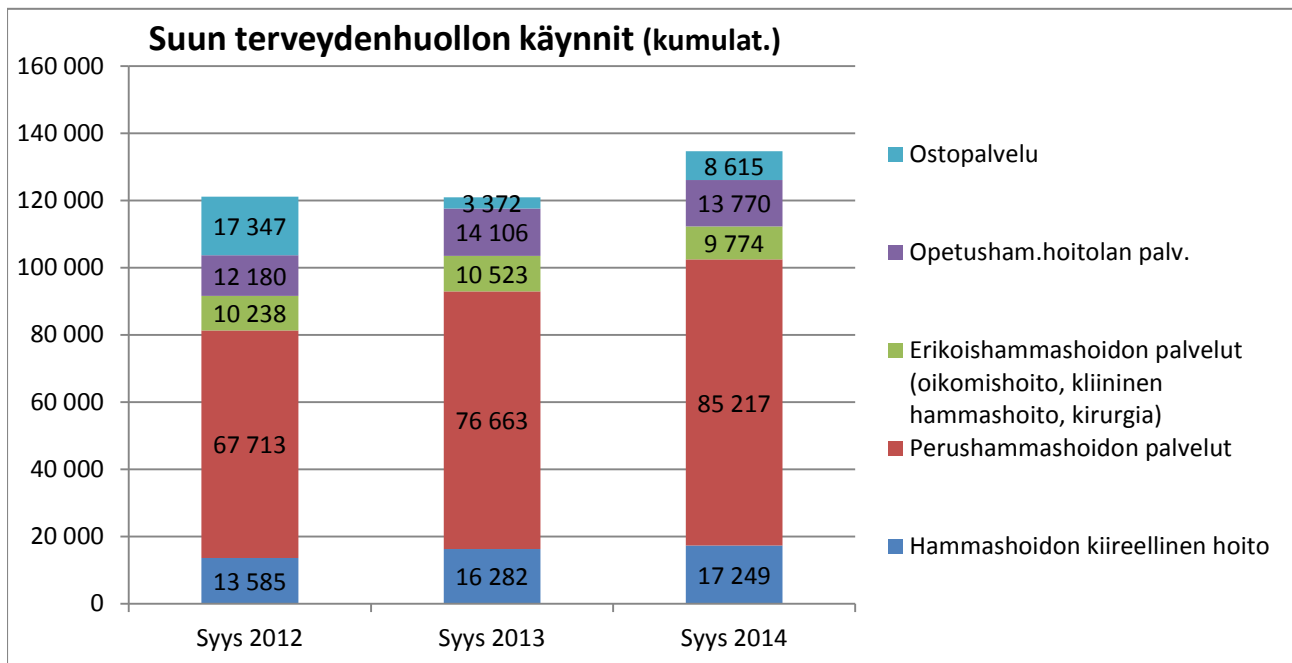
### Terveysasemakäynnit ja käynnin korvaavat puhelut (kumulat.)



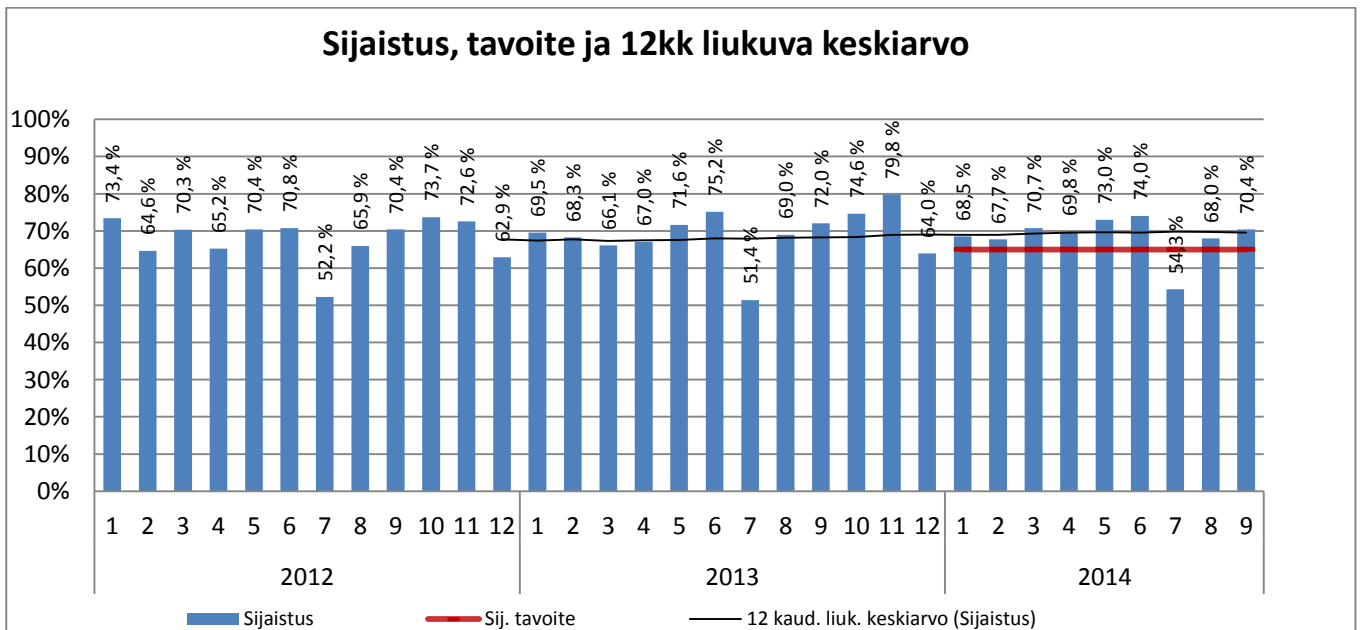
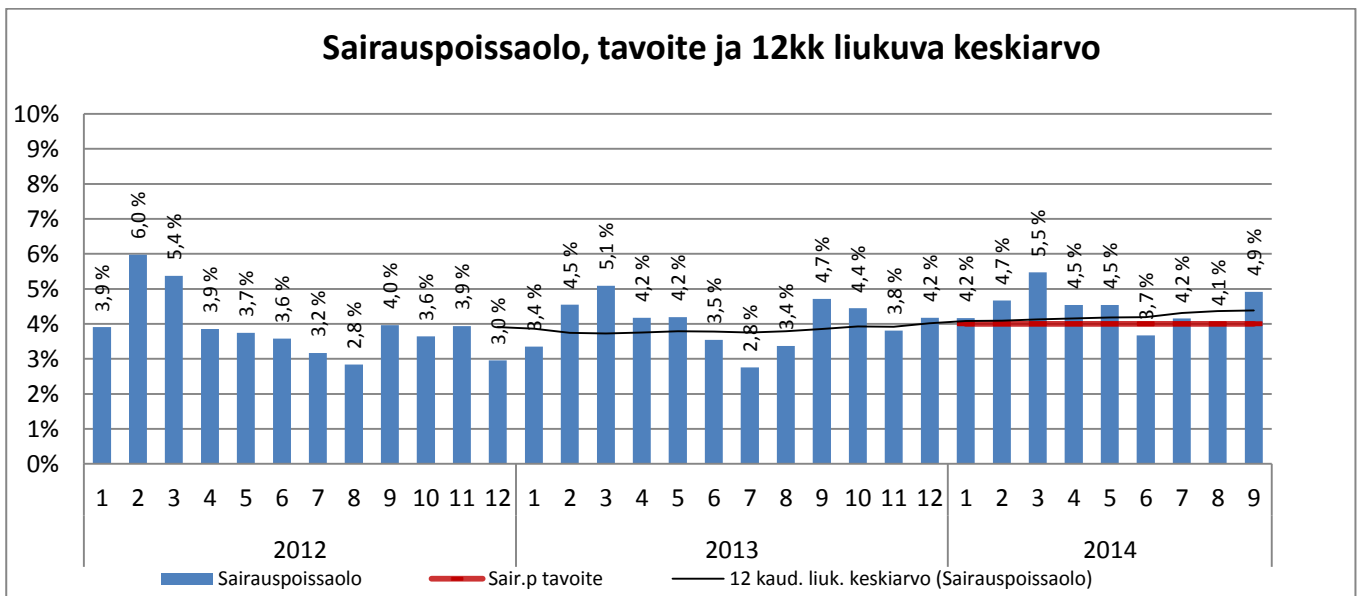
### Terveysasemakäynnit ja käynnin korvaavat puhelut kuukausittain



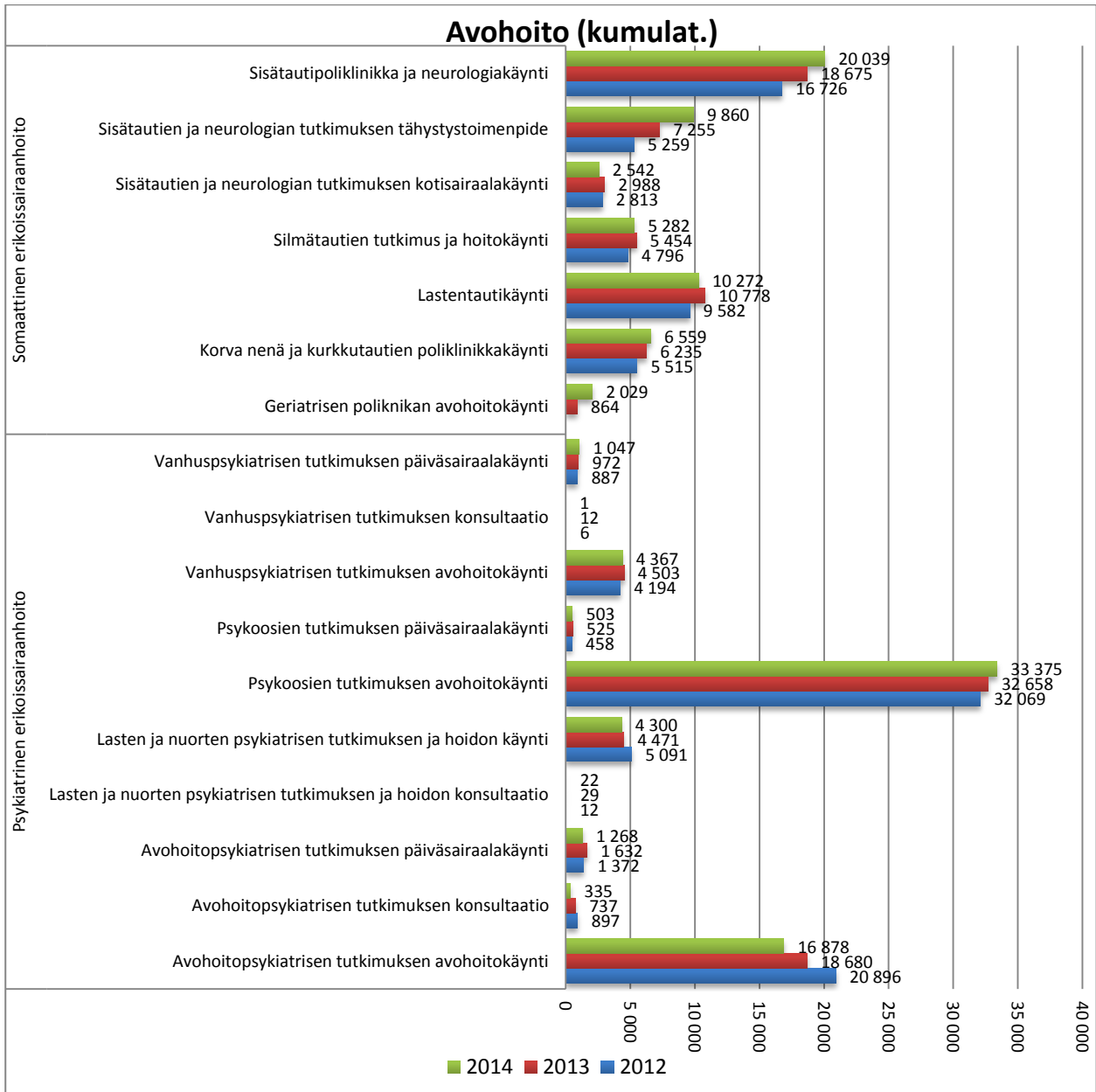
## Suun terveydenhuolto



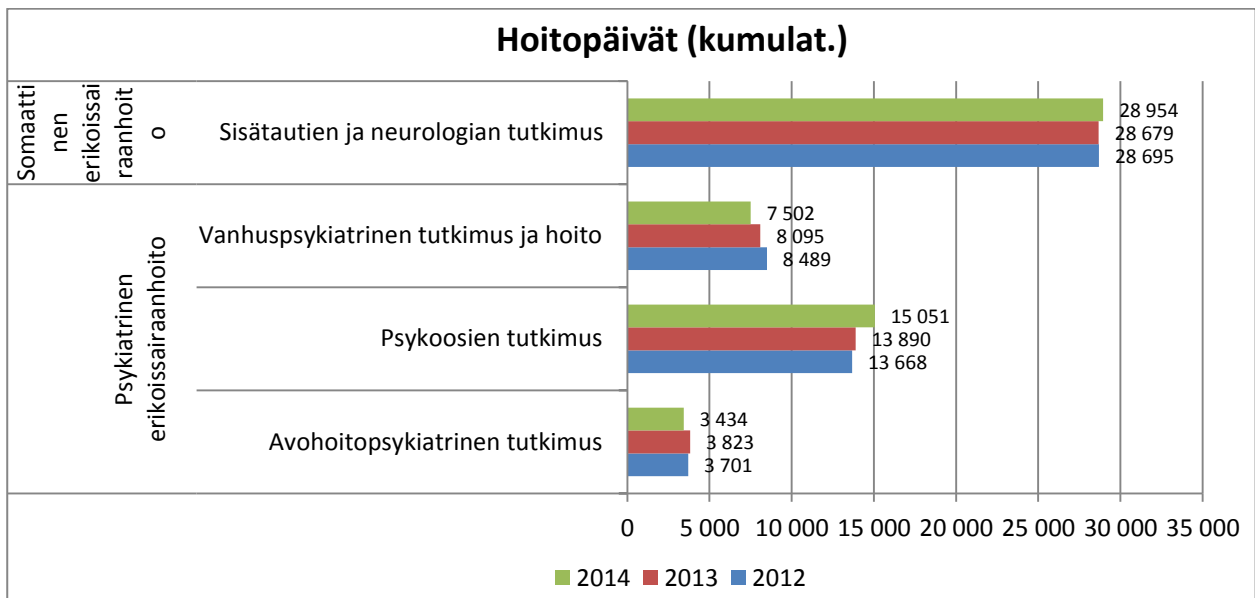
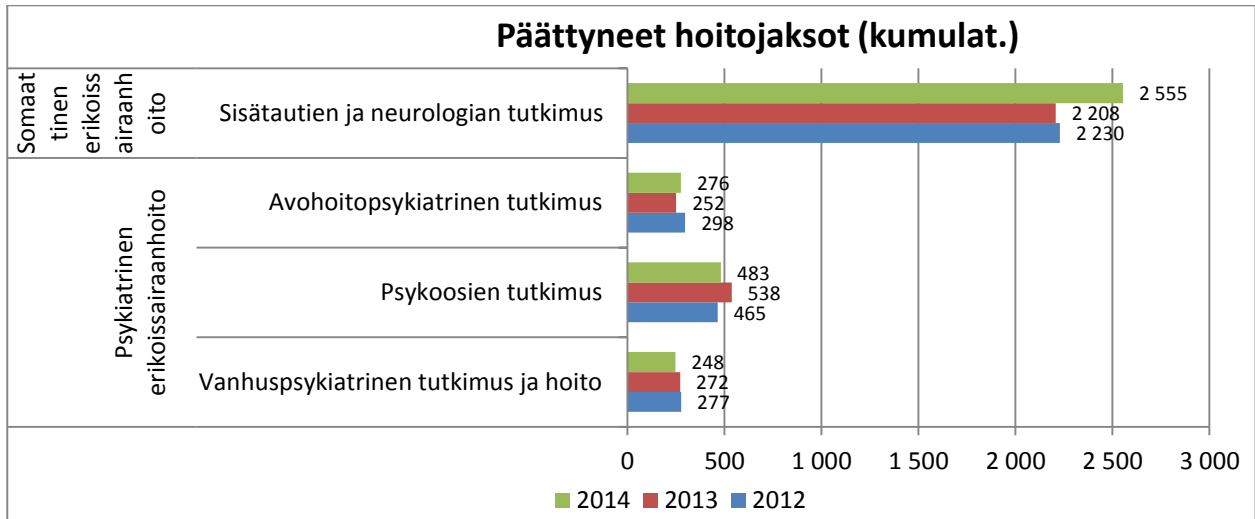
## ERIKOISSAIRAANHOITO



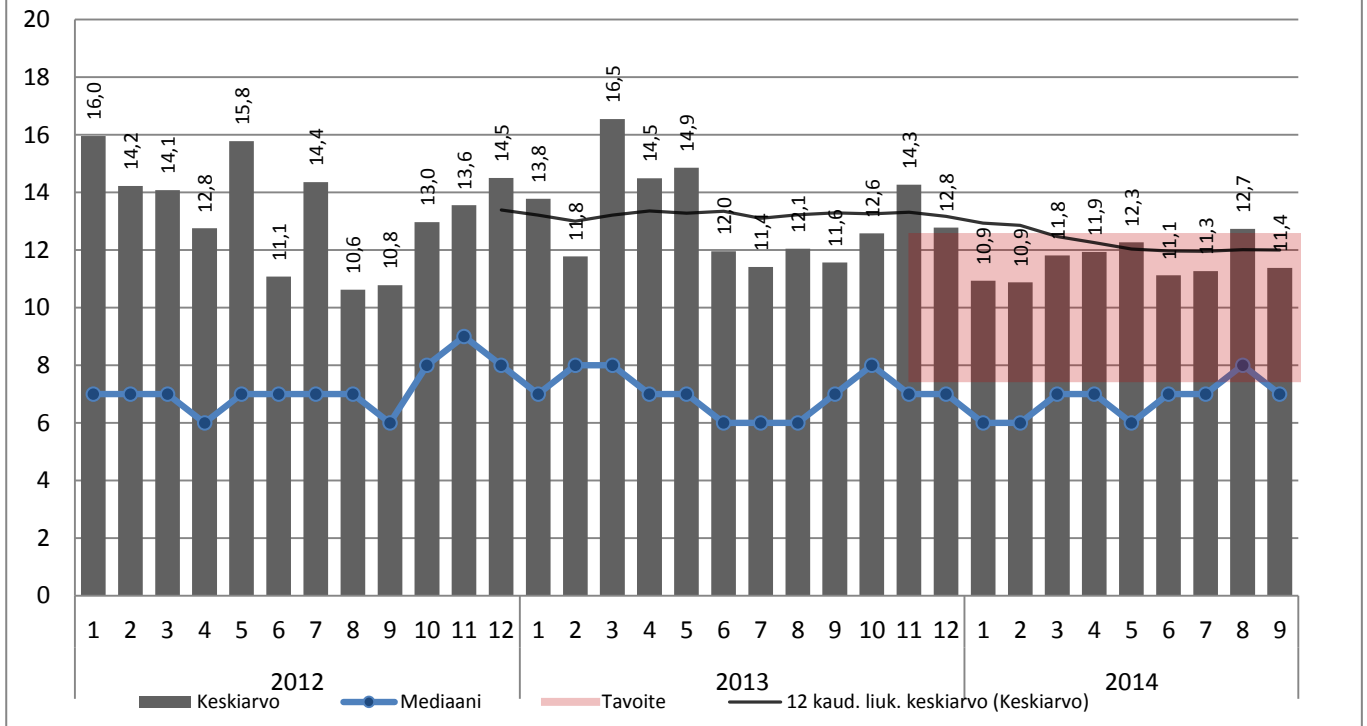
## Oma toiminta: Avohoito



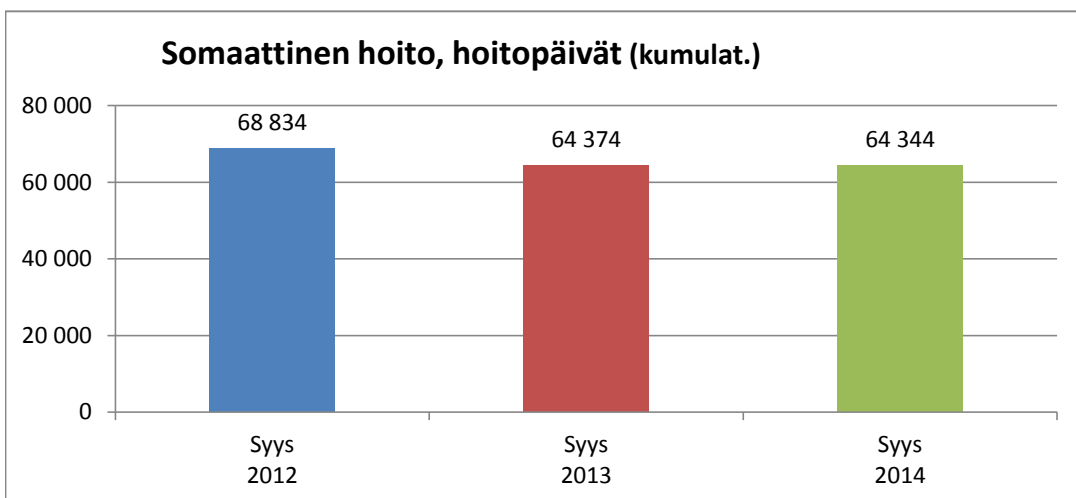
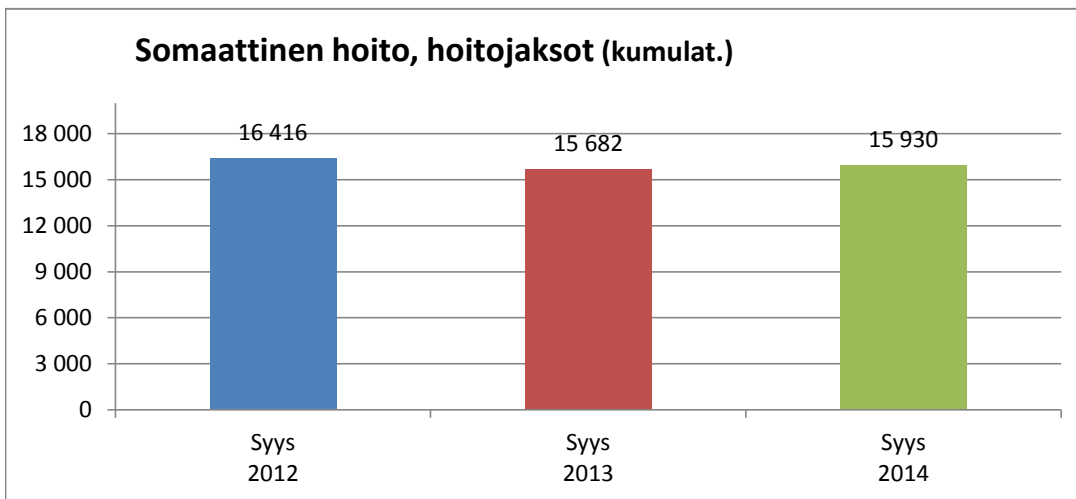
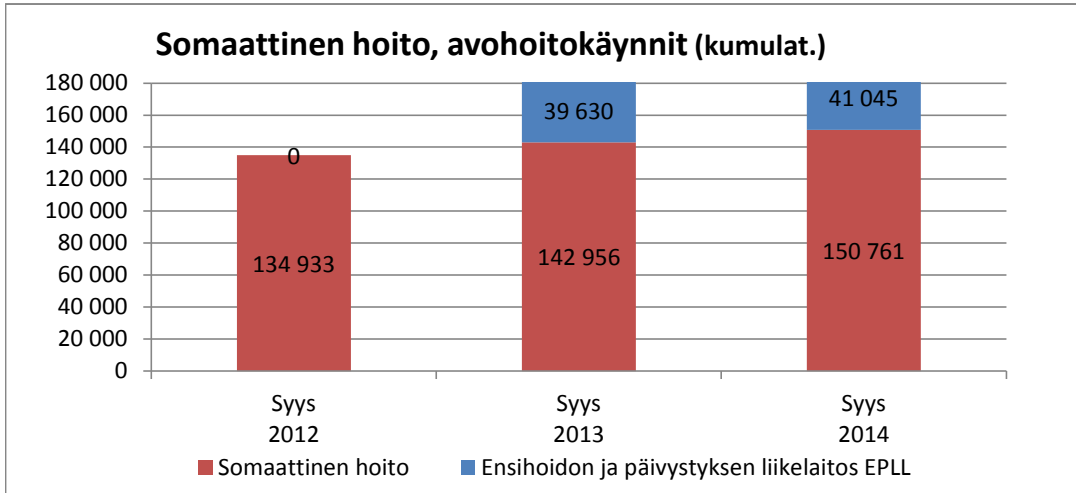
## Oma toiminta: Sairaalahoito



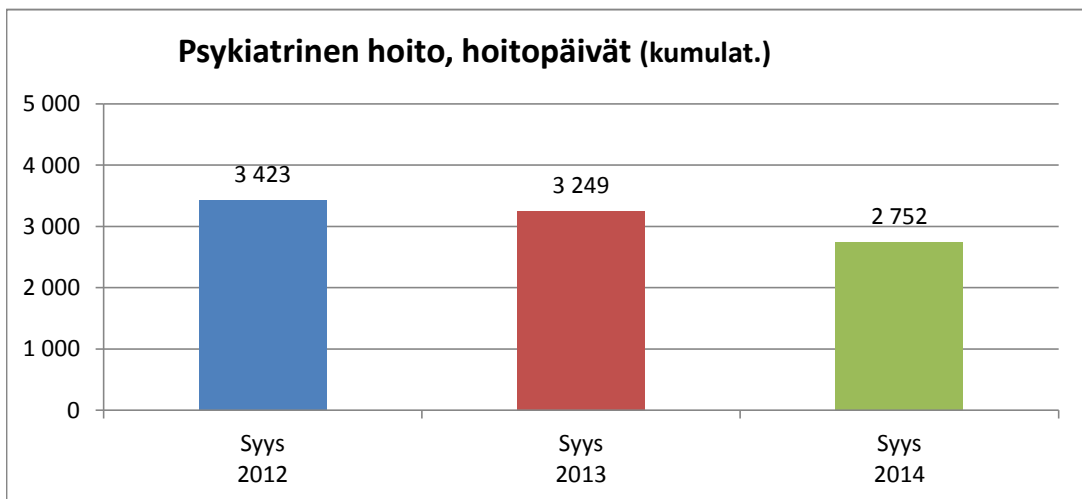
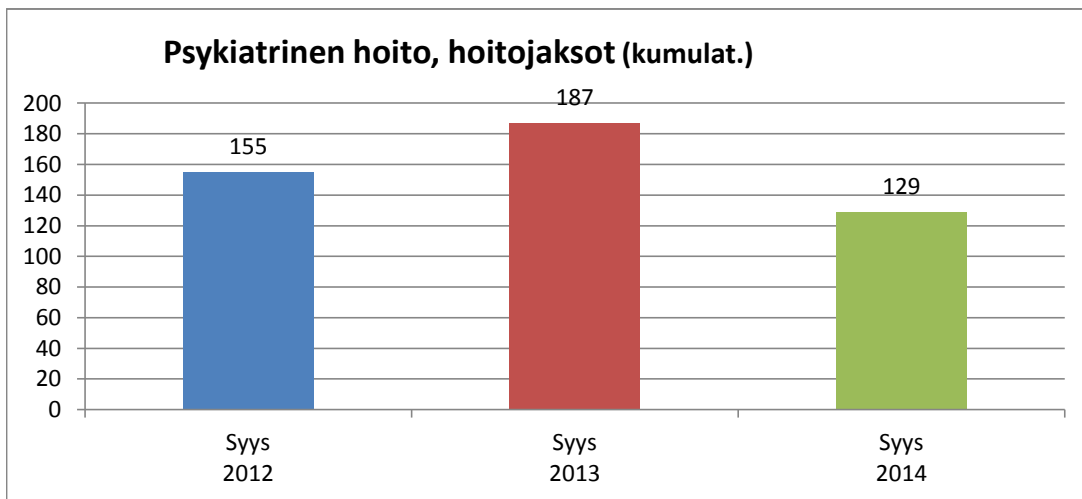
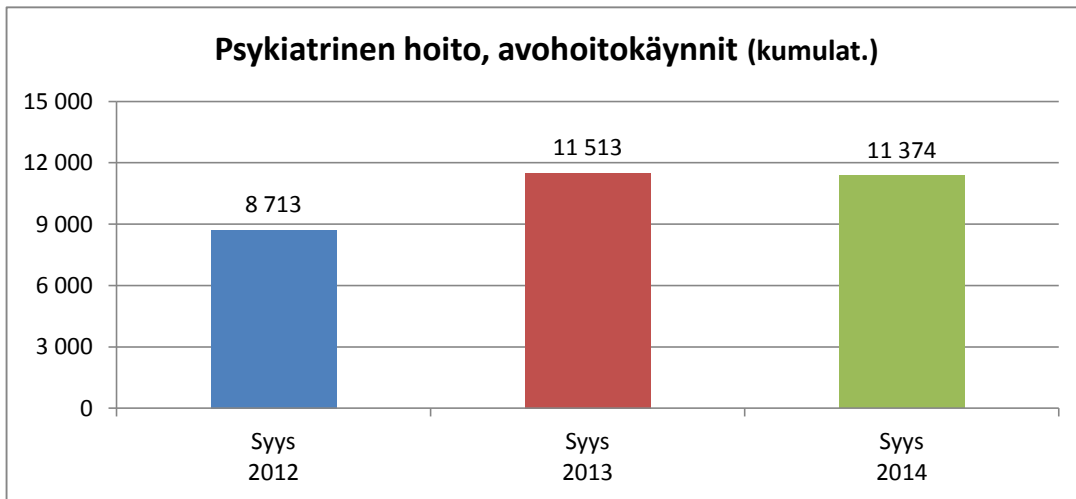
## Oman esh:n som. hoitojaksojen pituus, tavoite 2014: 8-12 vrk



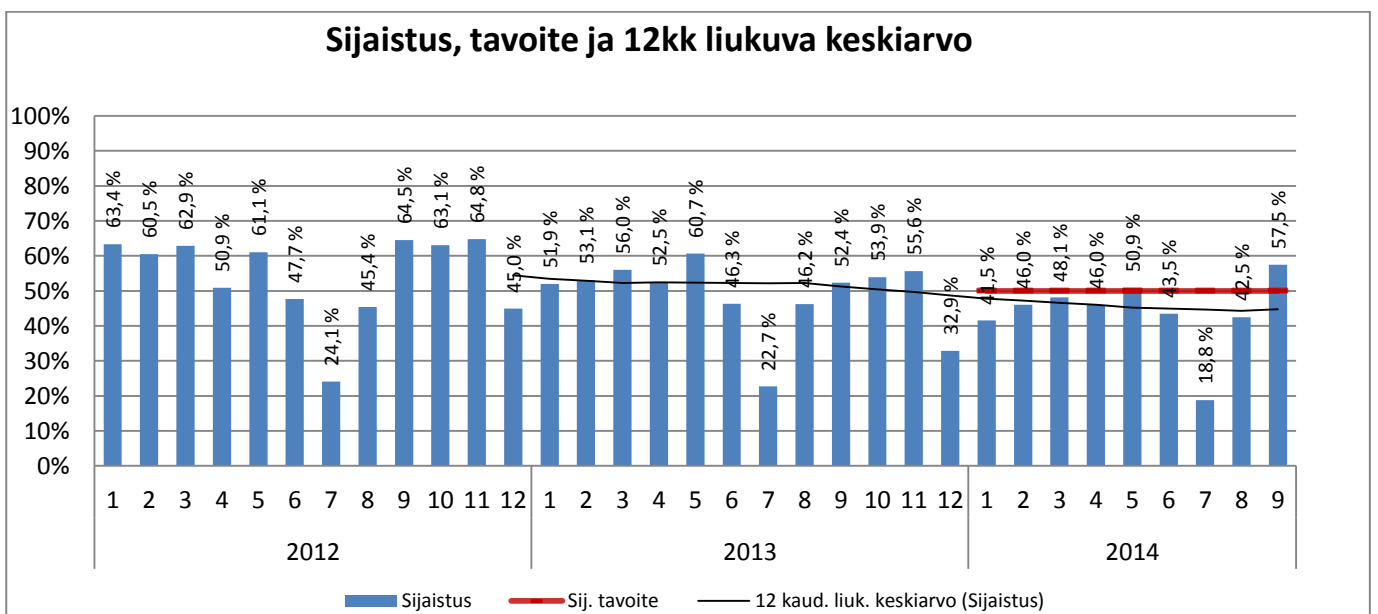
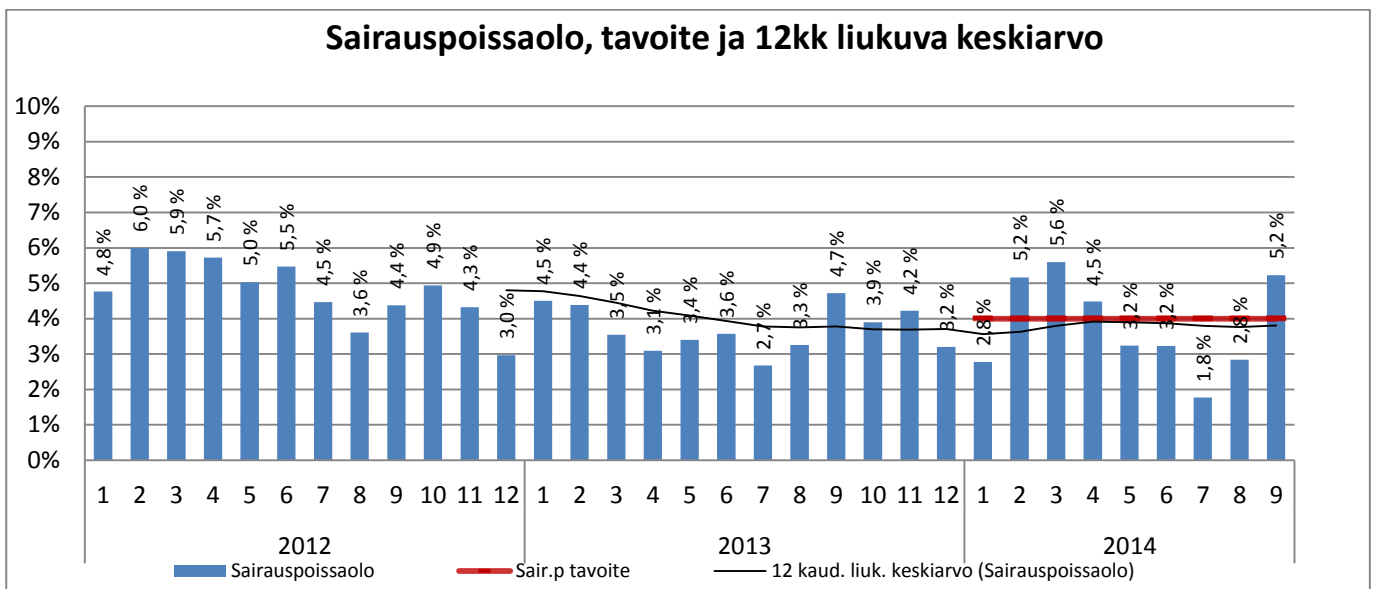
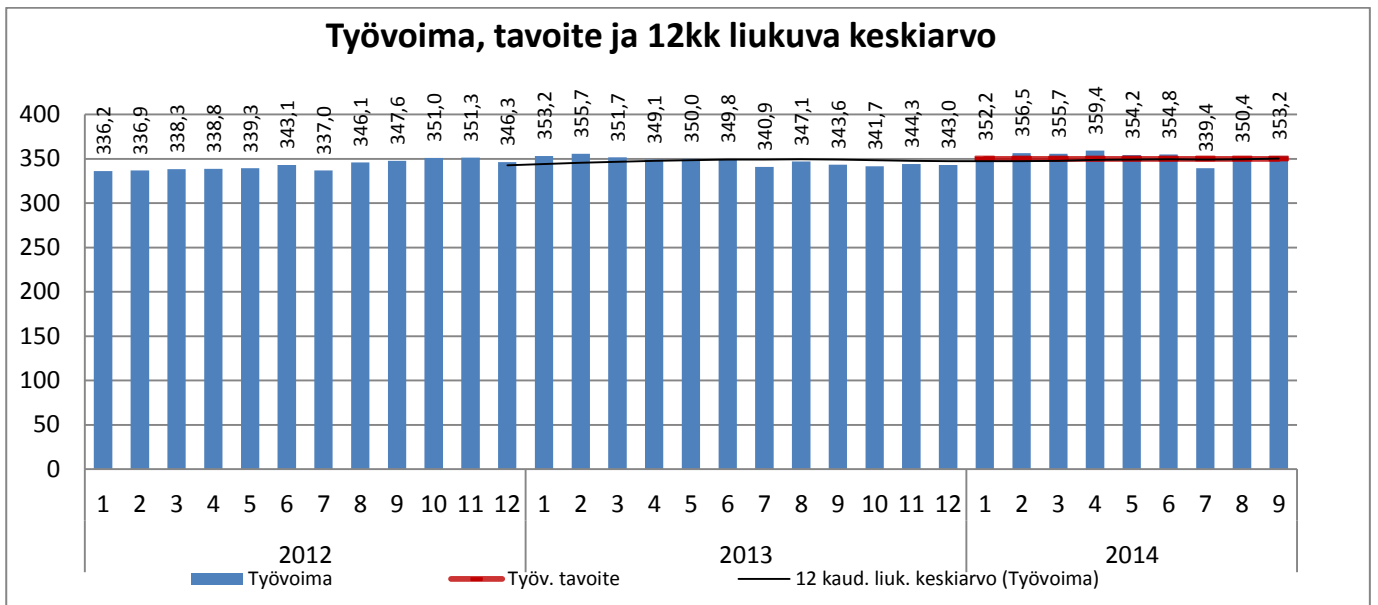
## Sairaanhoitopiiri





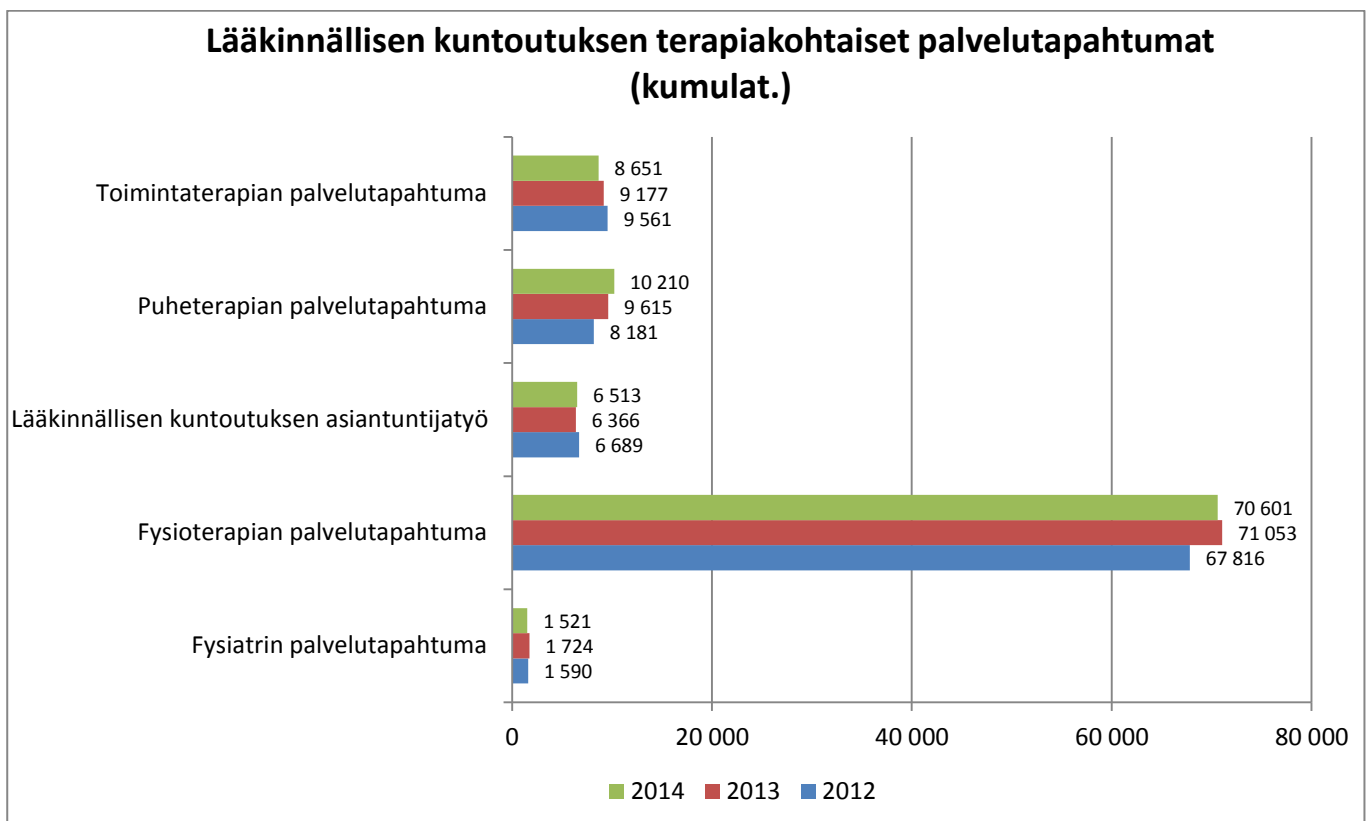
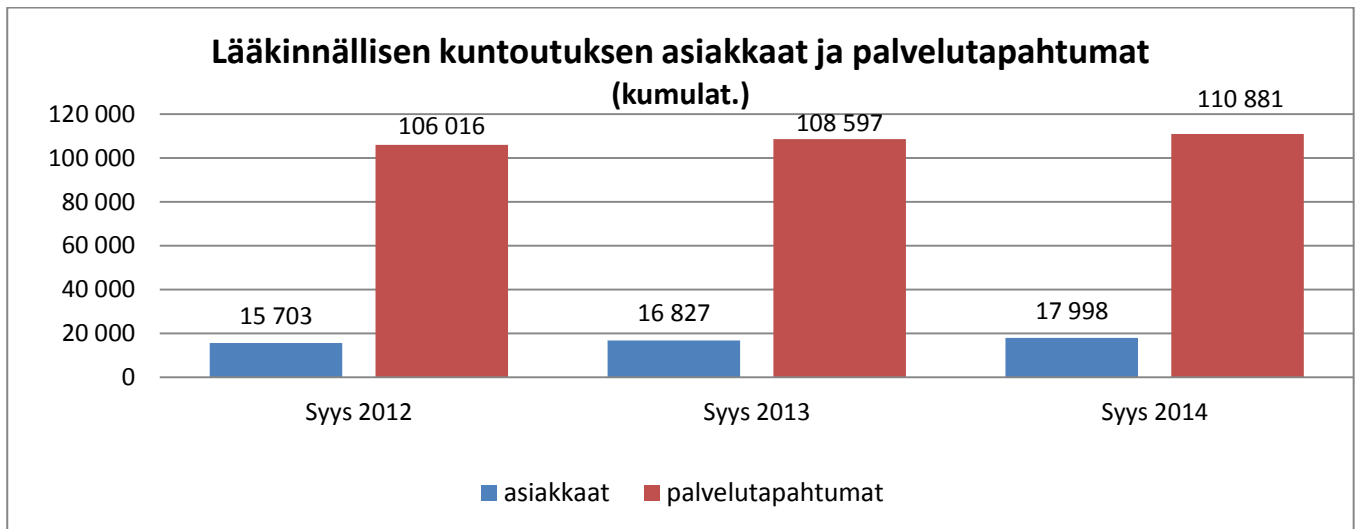


## KUNTO-OUTUMISPALVELUT

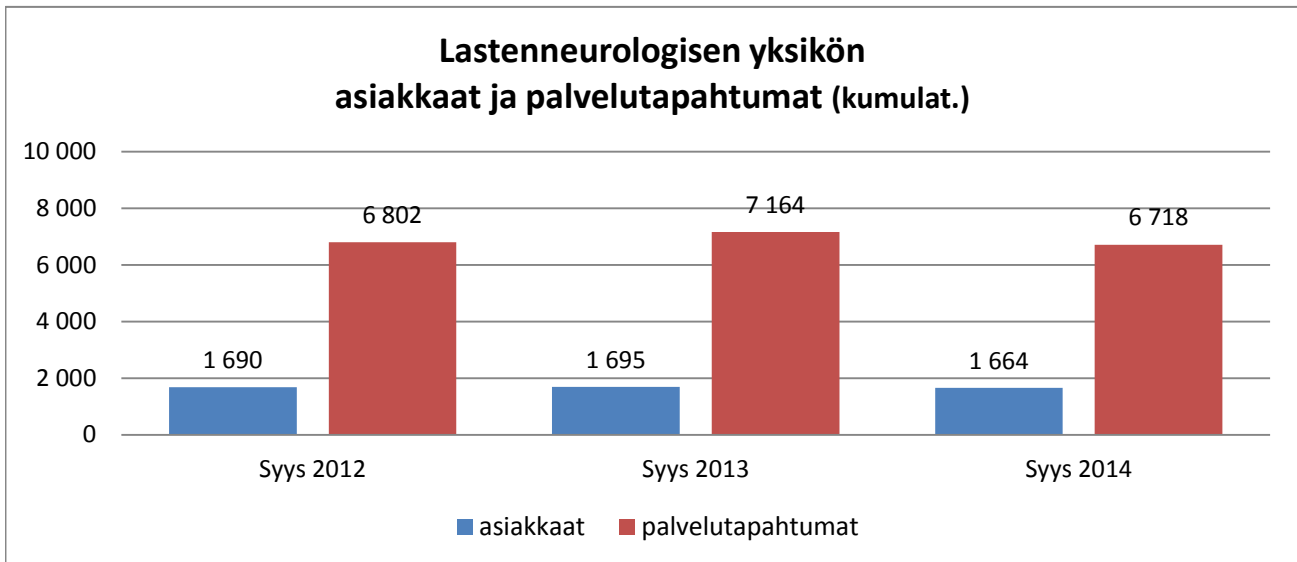


Kumulat. tarkoittaa asiastapahtumien summaa tai eri asiakkaiden määrää vuoden alusta raportointikuukauden loppuun (tammi-syyskuu)

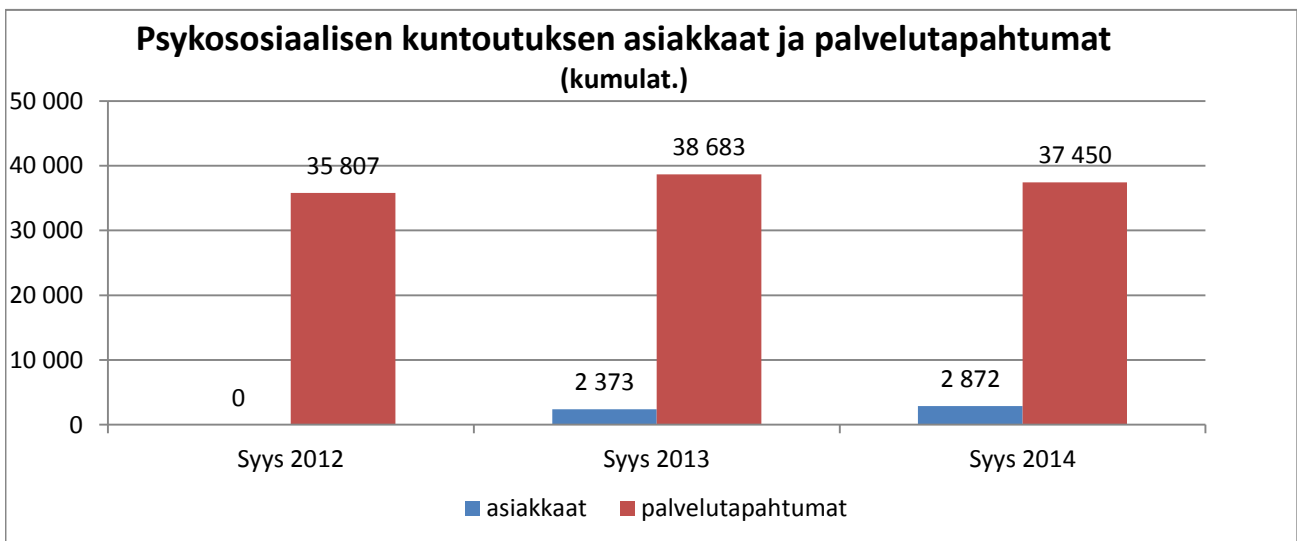
## Lääkinnällinen kuntoutus



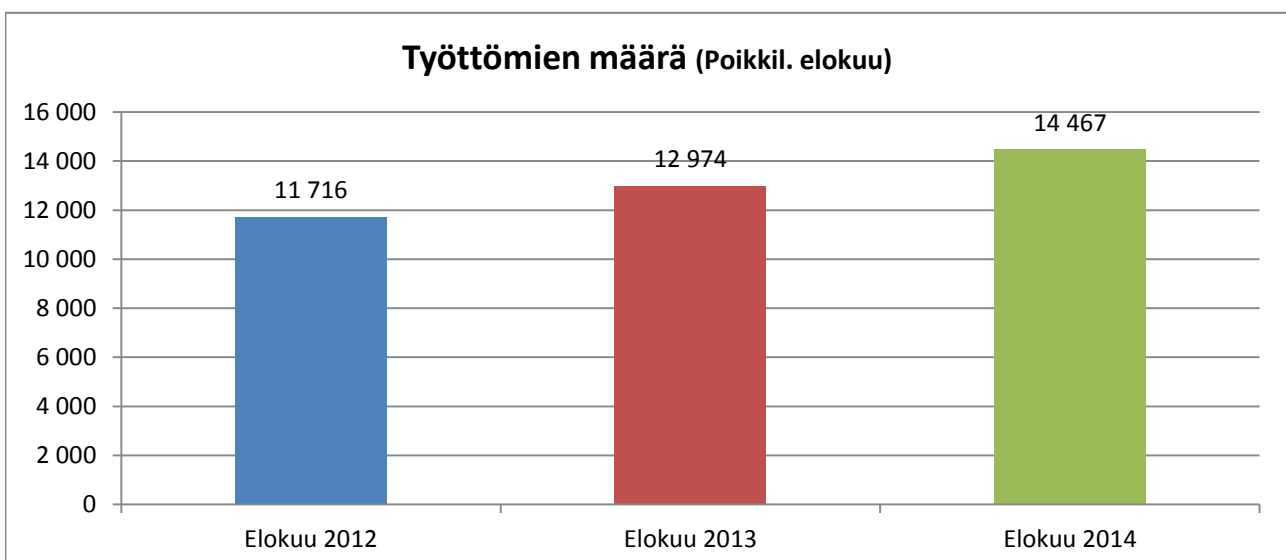
## Lastenneurologinen yksikkö

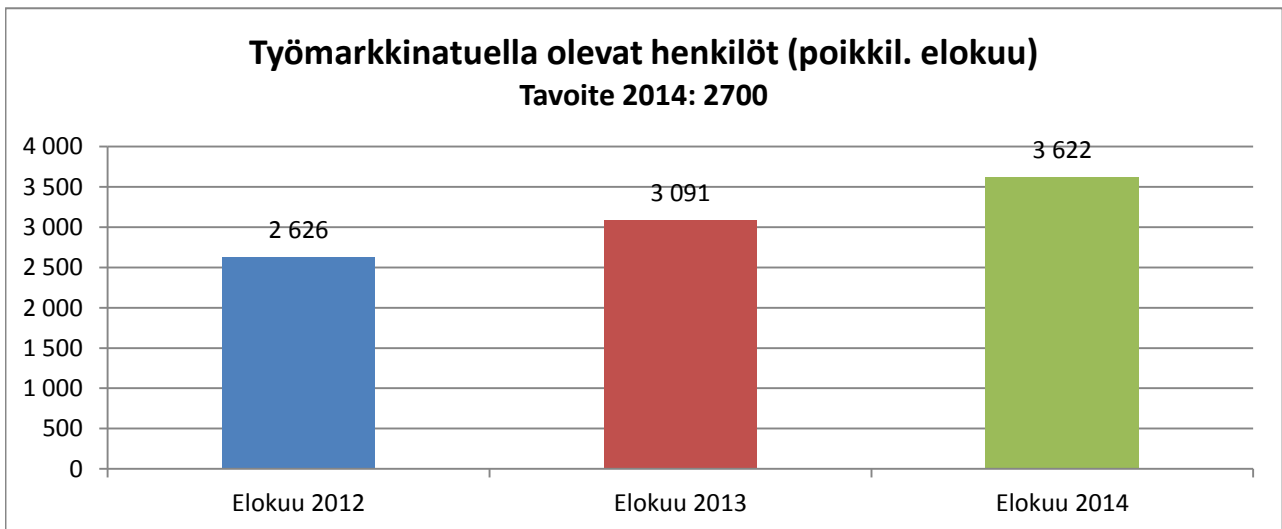
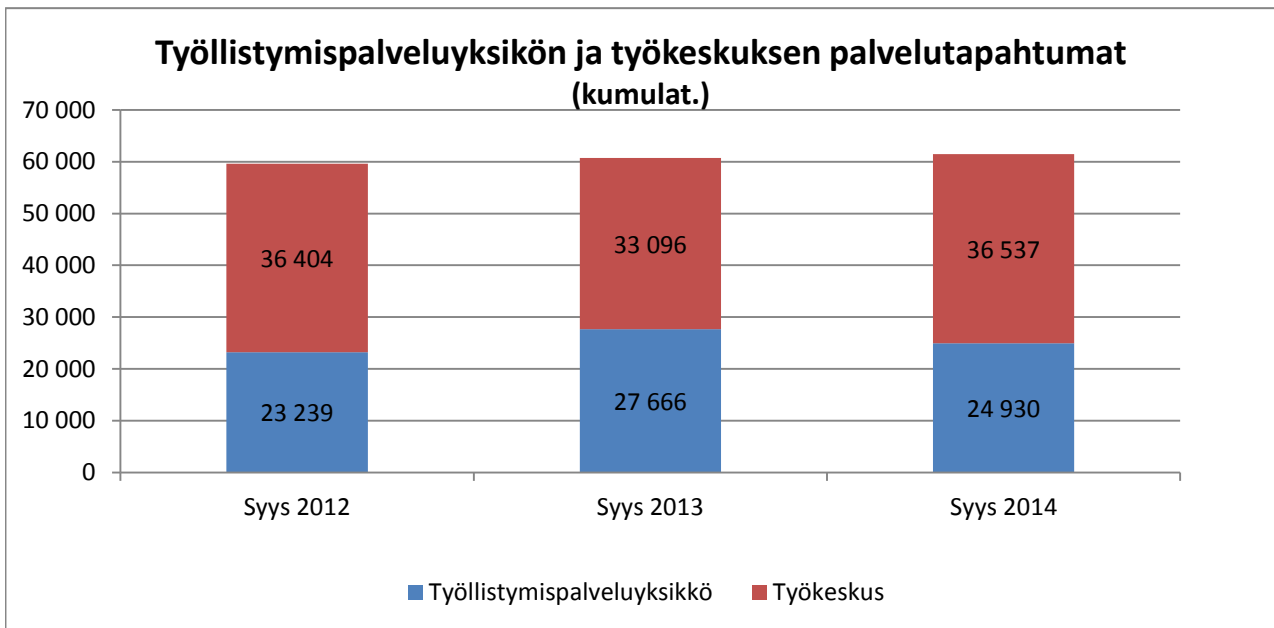
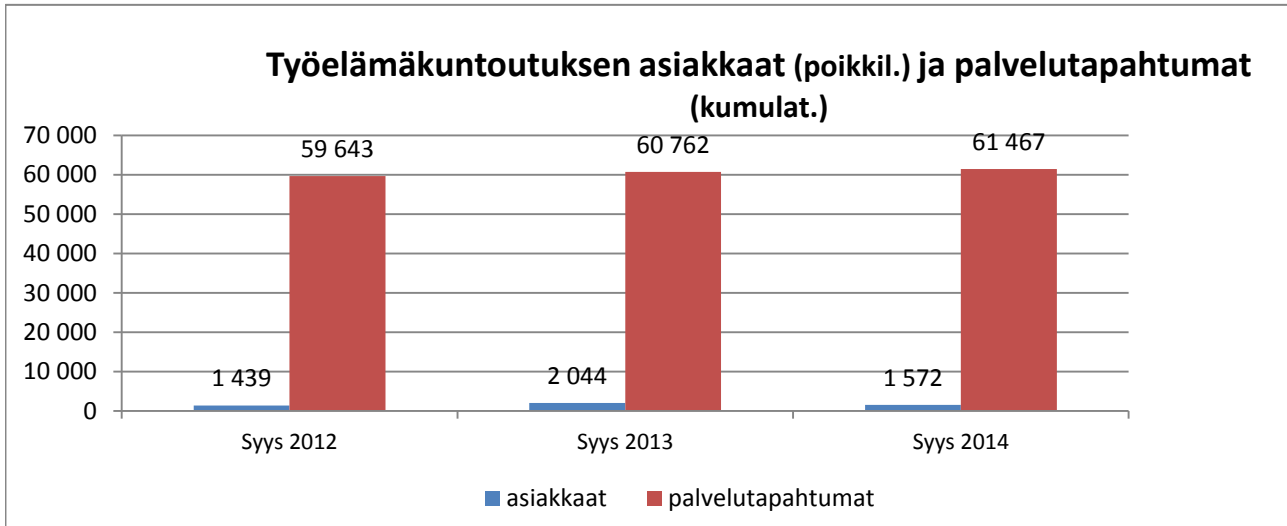


## Psykososiaalinen kuntoutus

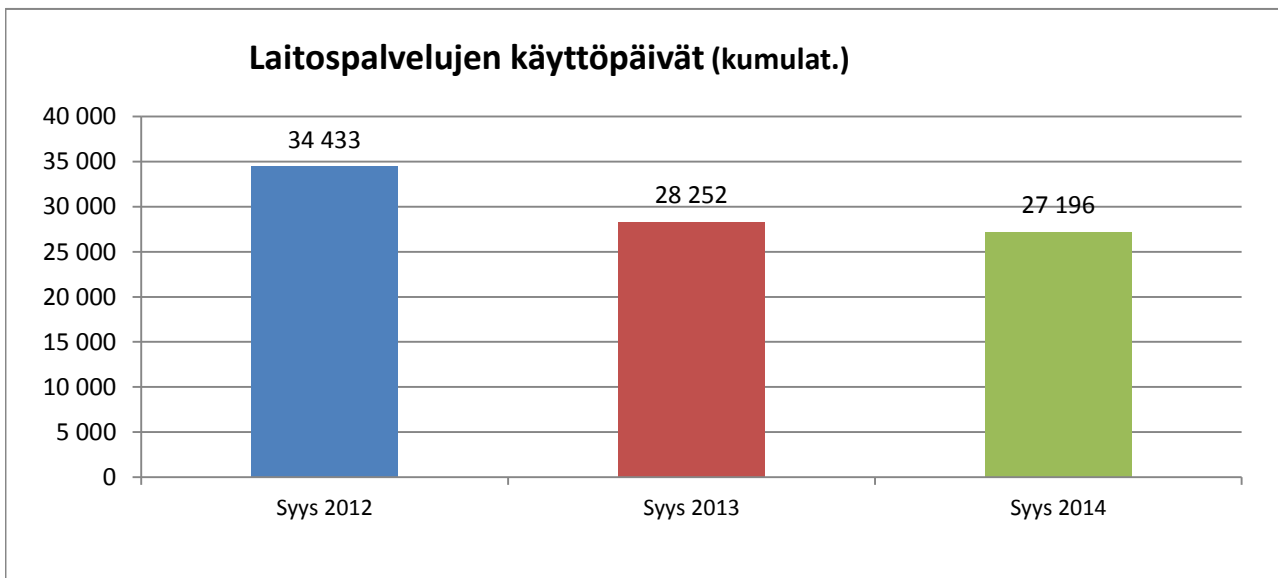
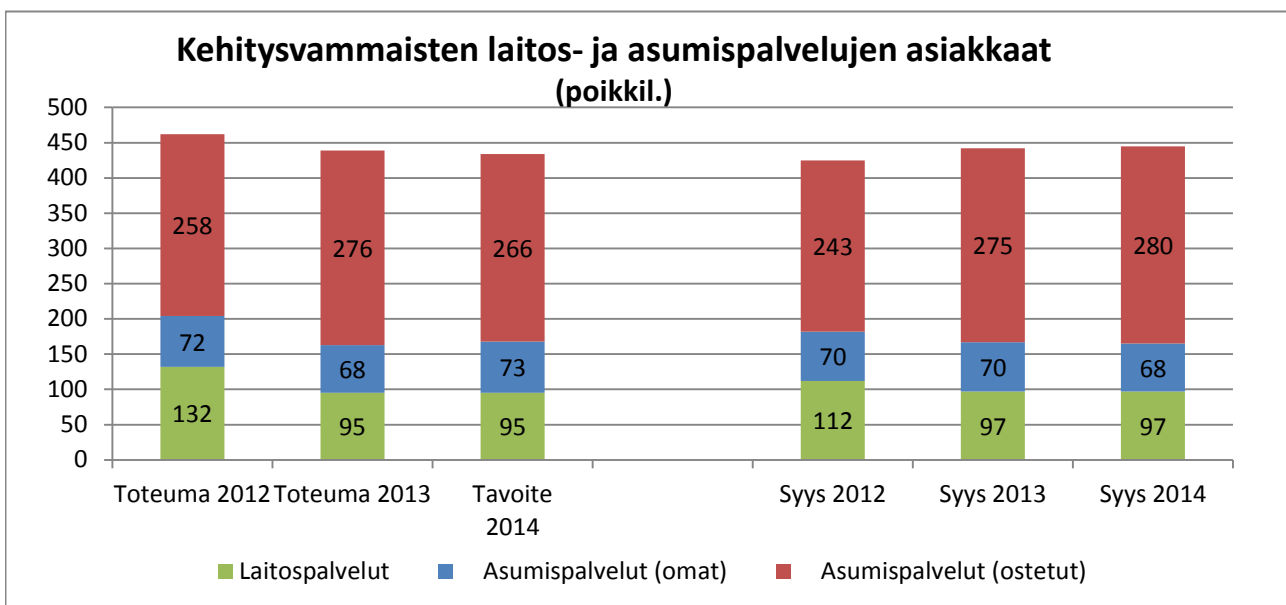
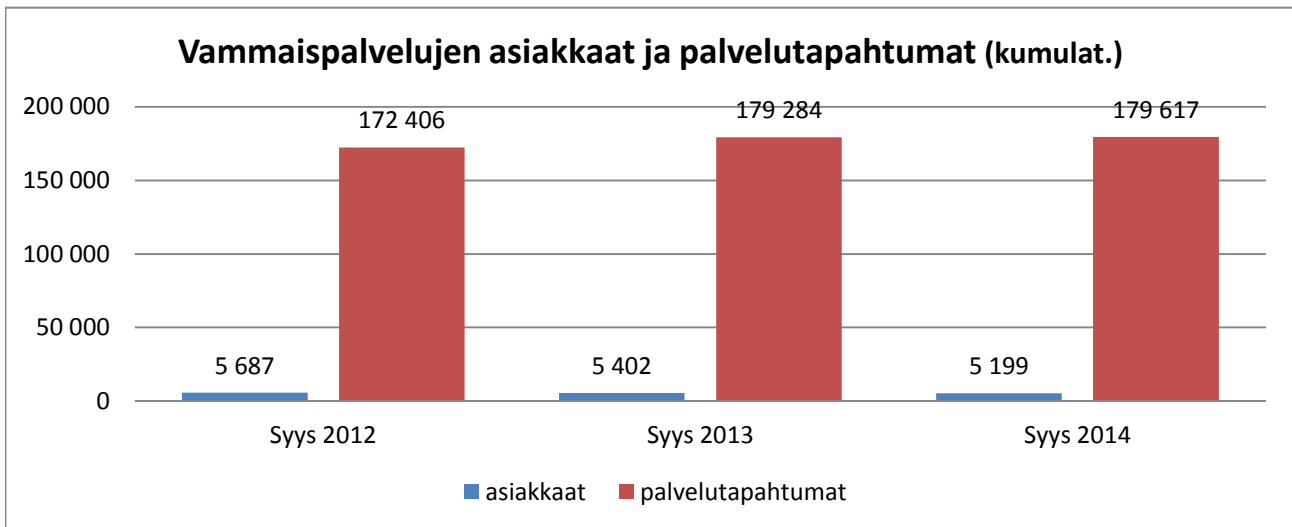


## Työelämäkuntoutus

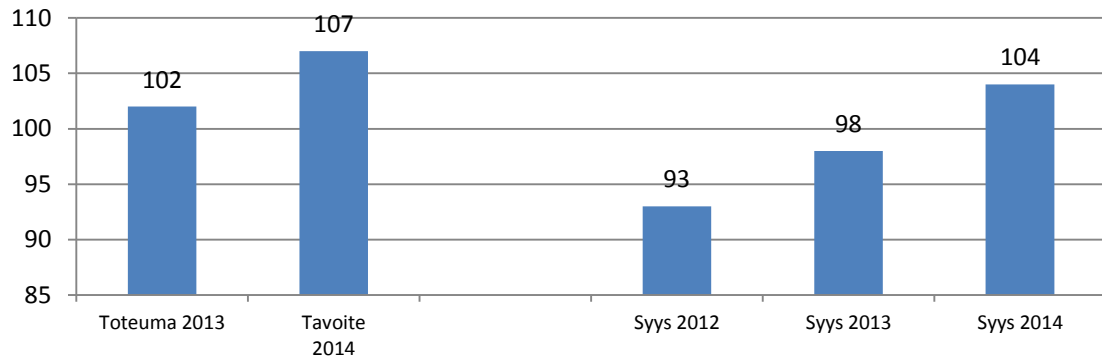




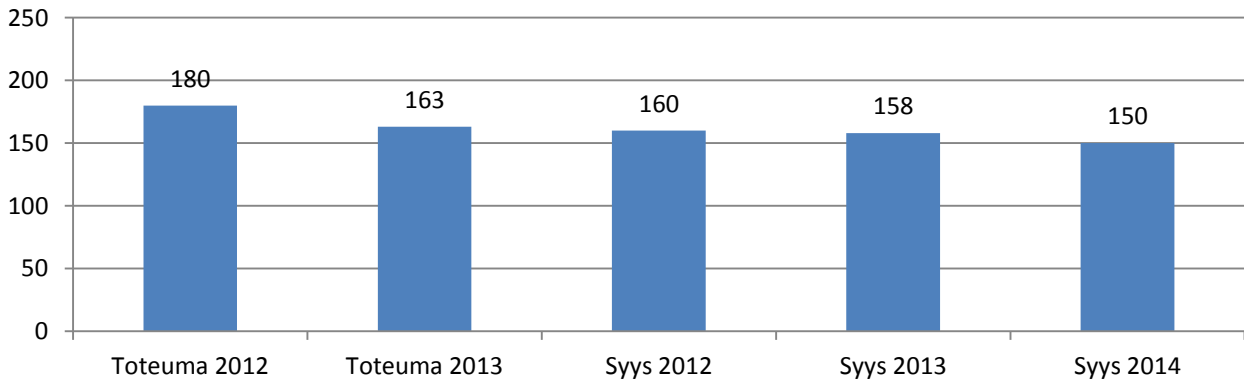
## Vammaispalvelut



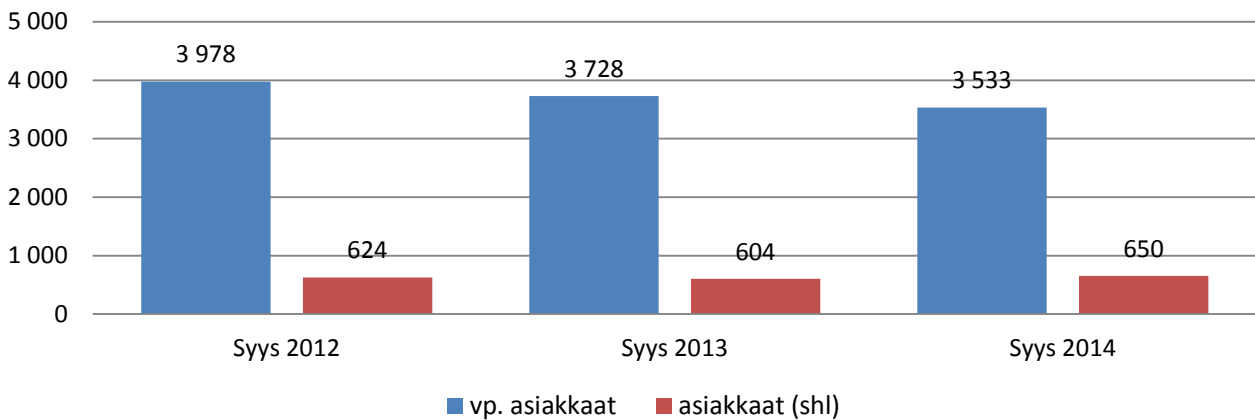
### Vaikeavammaisten palveluasumisen asiakkaat (poikkil.)



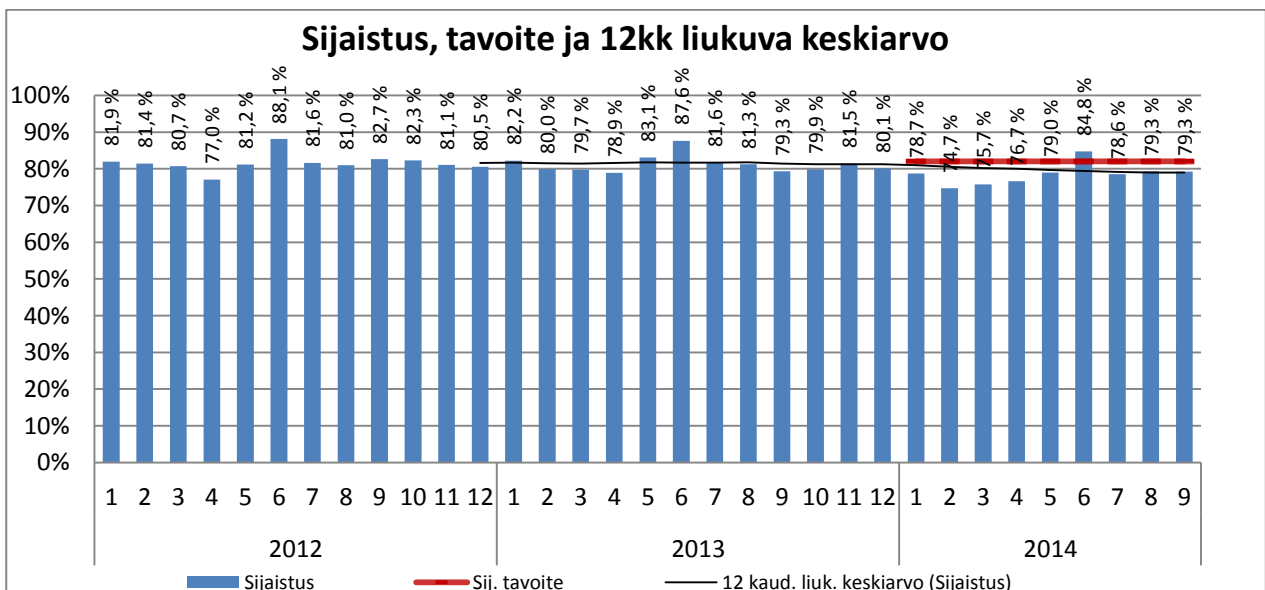
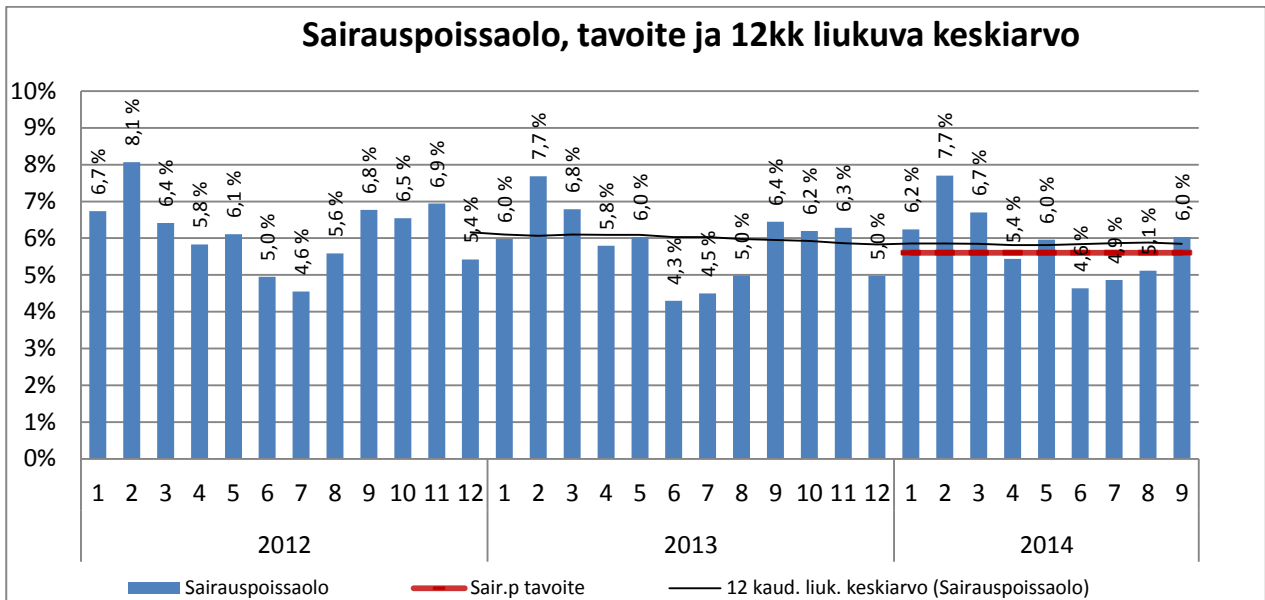
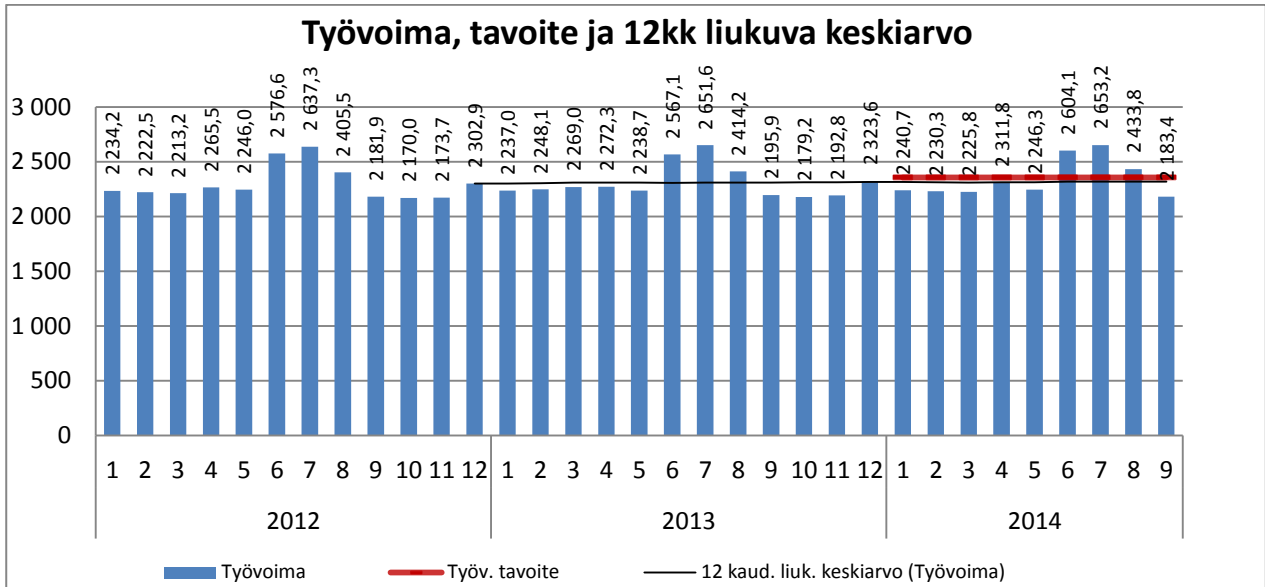
### Vammaisten ja pitkäaikaissairaiden lasten omaishoidontuen asiakkaat (poikkil.)



### Kuljetuspalvelujen asiakkaat (kumulat.)

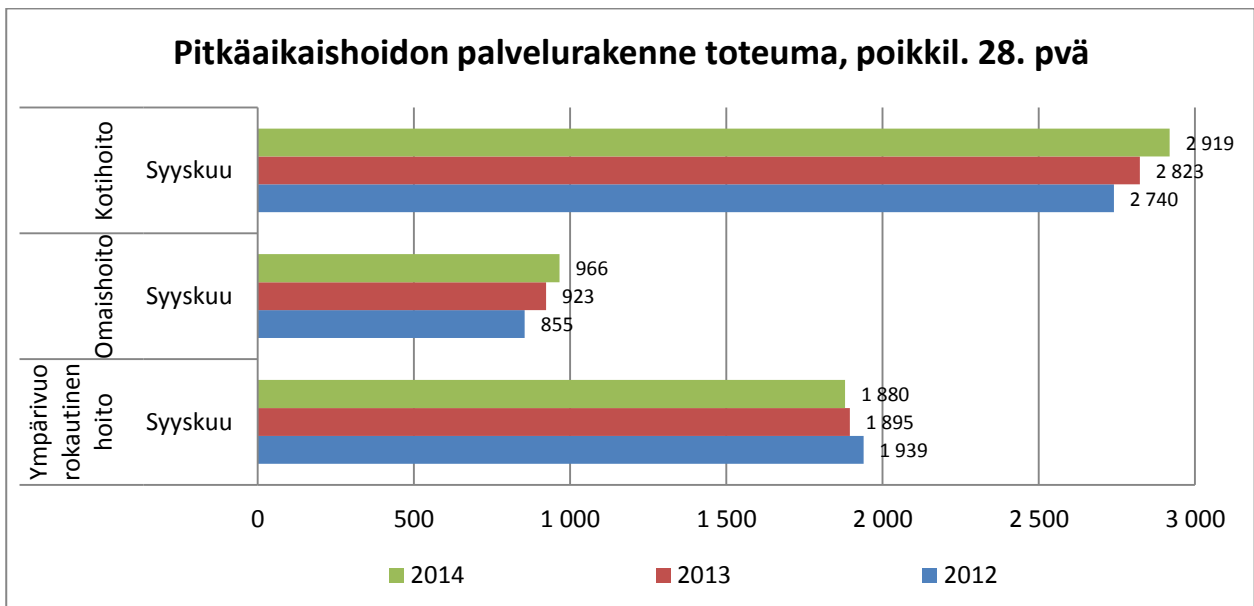
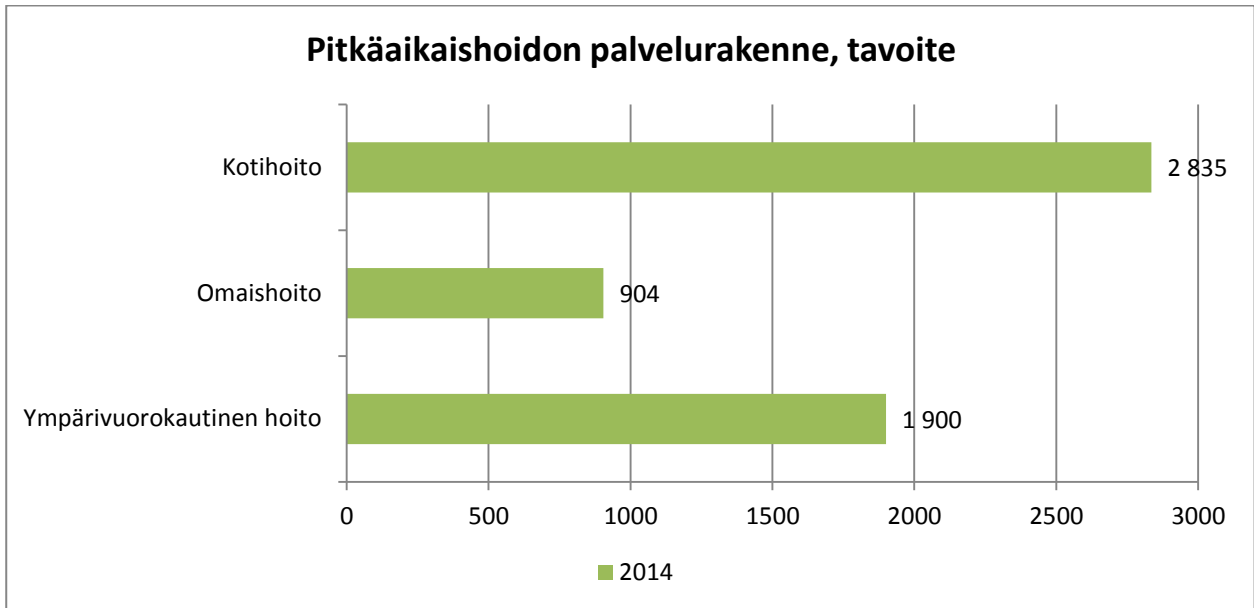


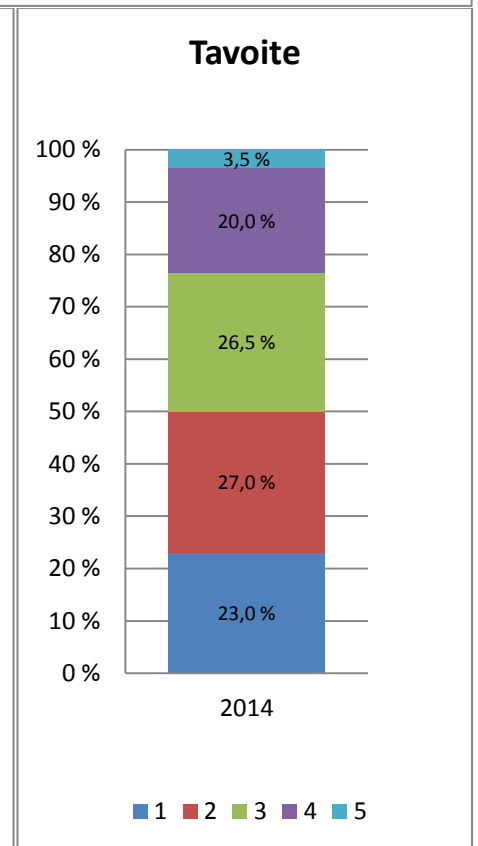
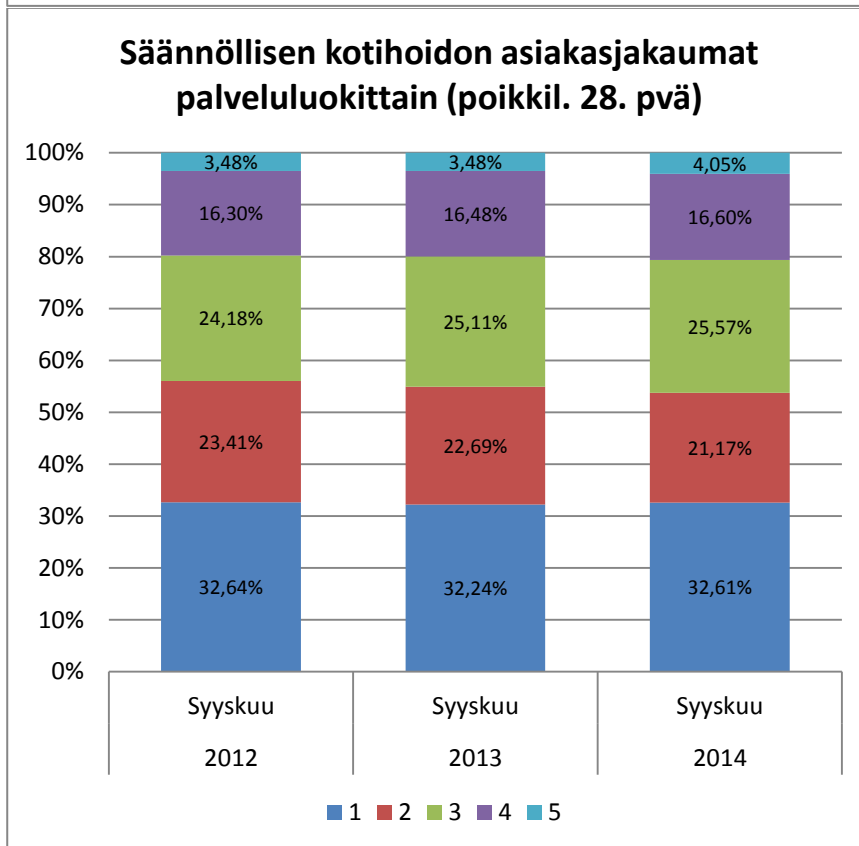
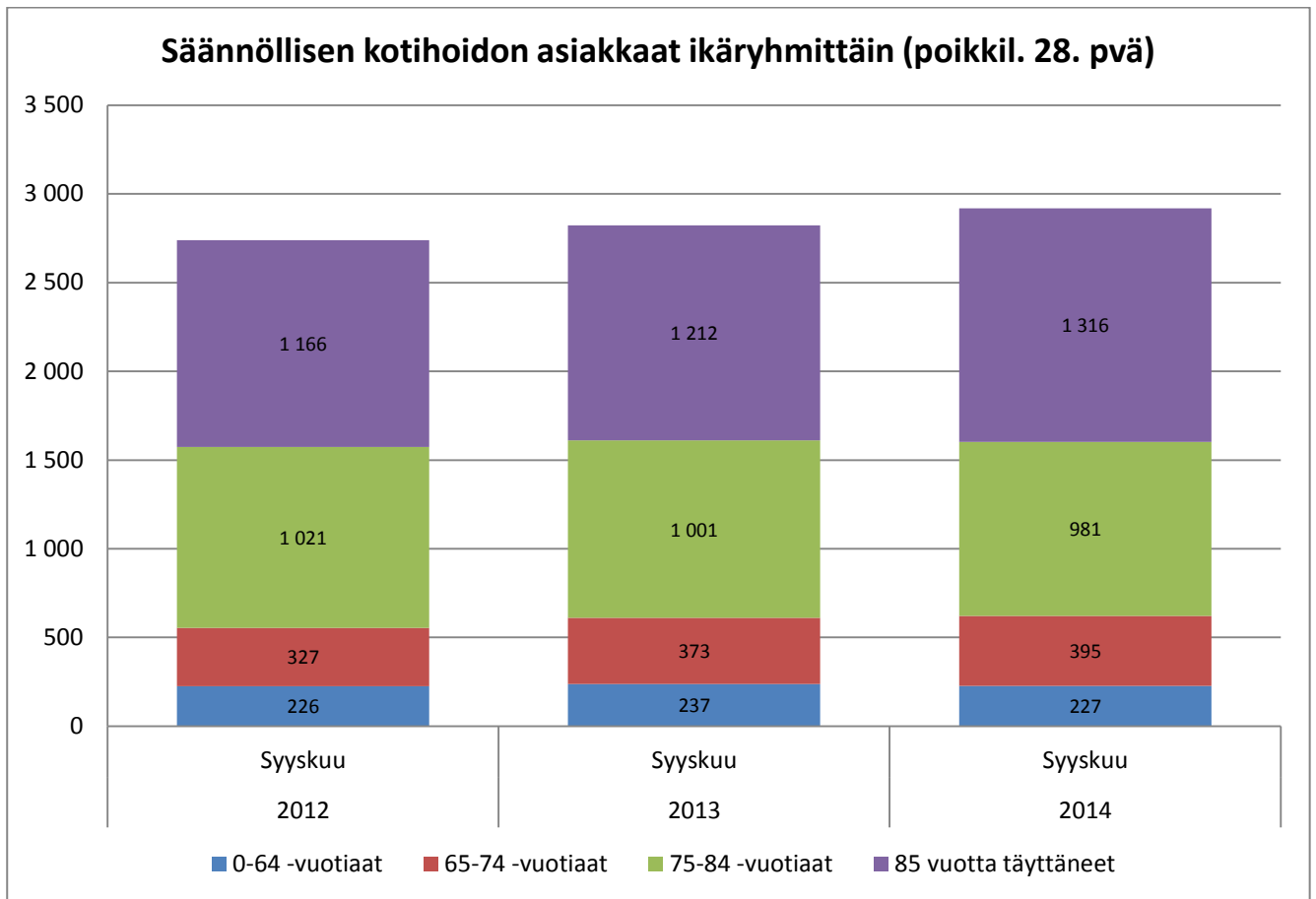
## VANHUSPALVELUT



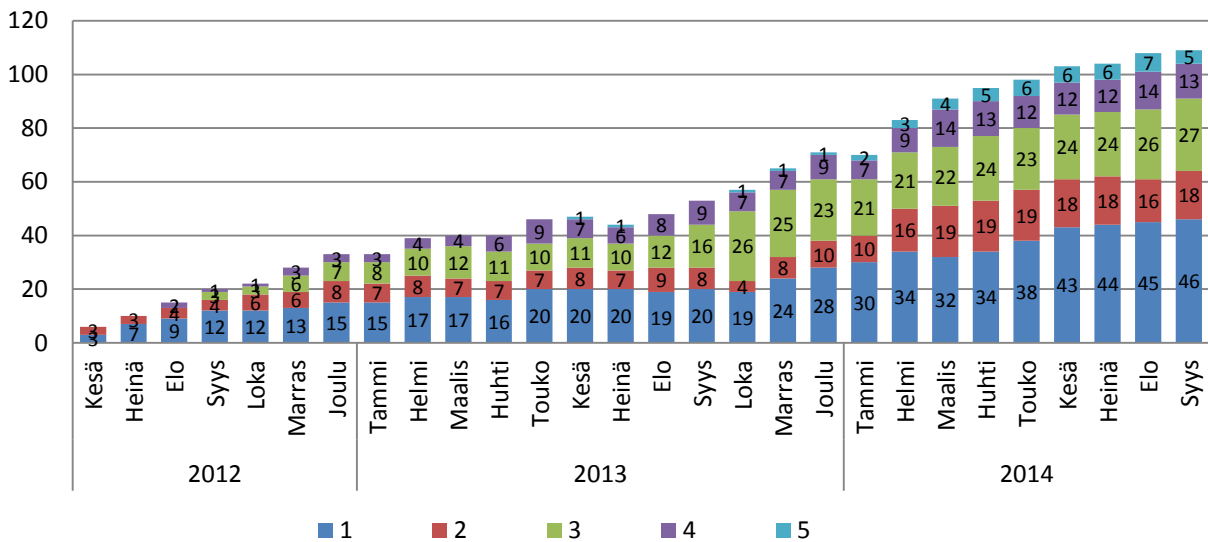


## Toiminta

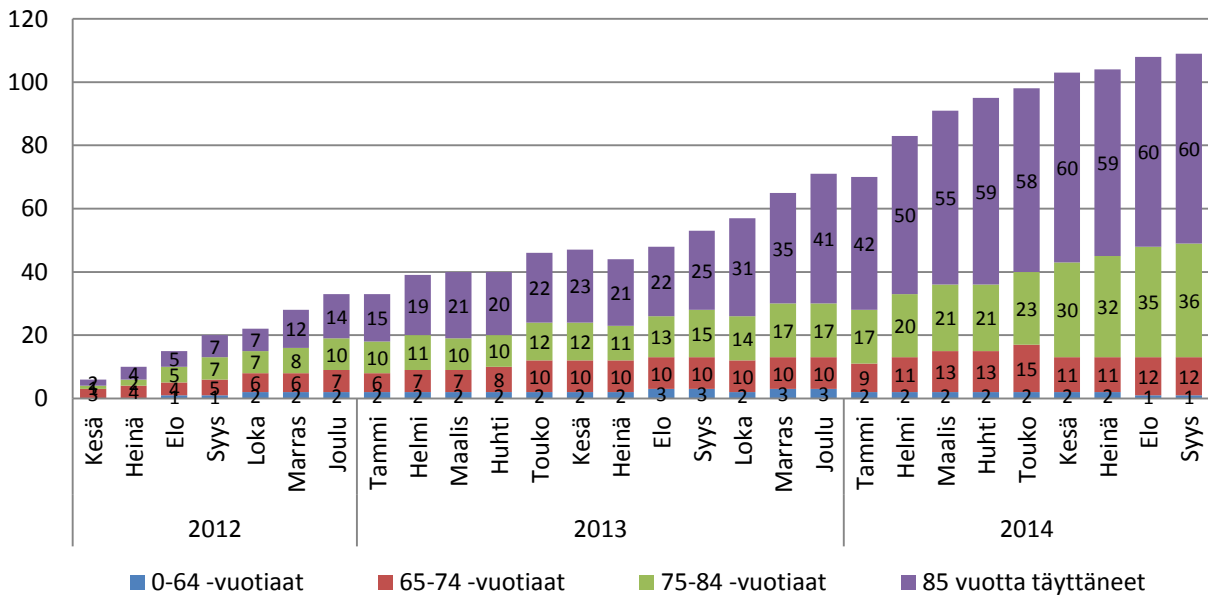


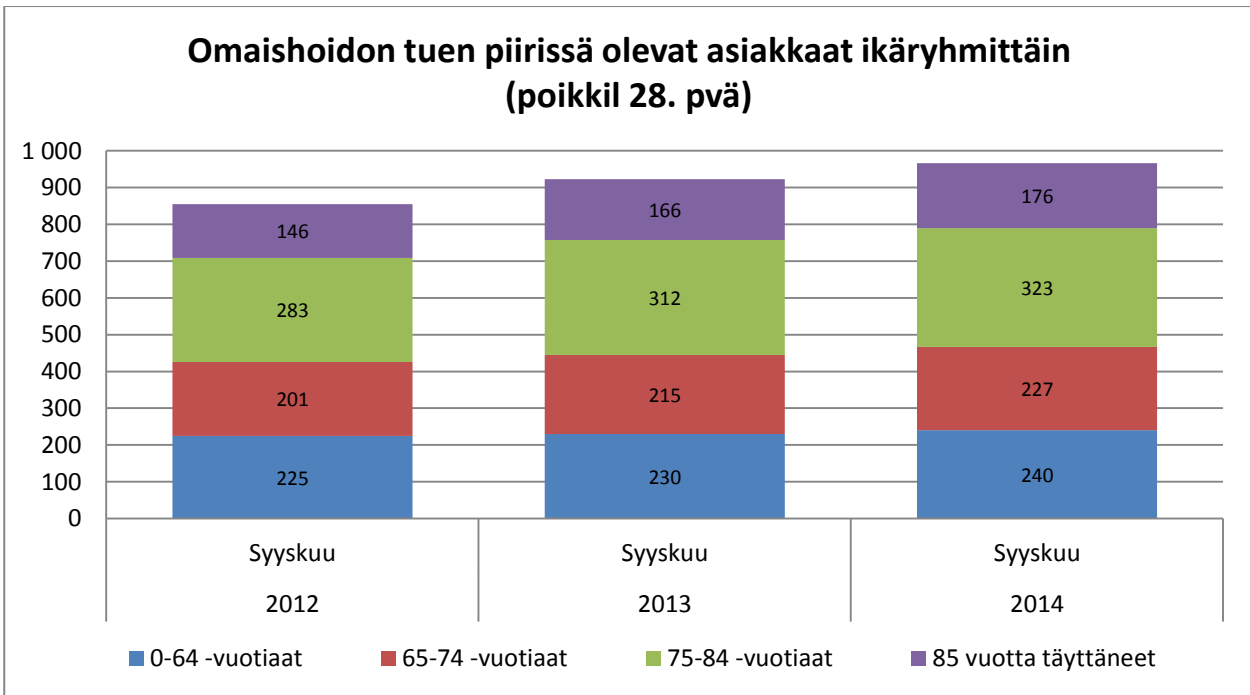
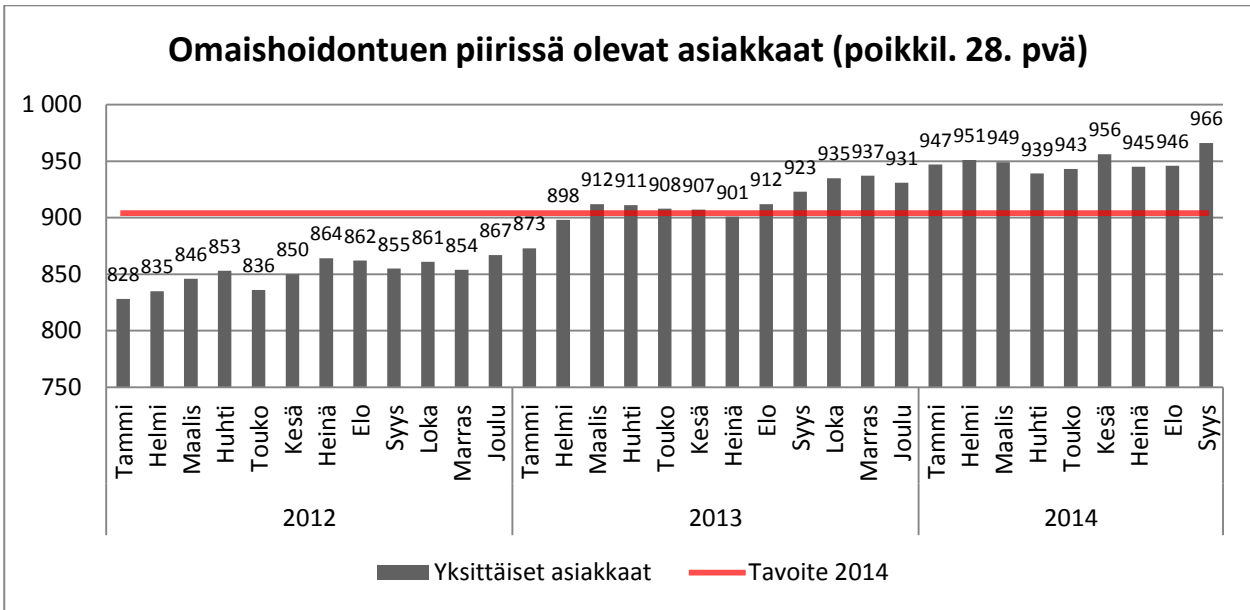


### Palveluseteliasiakkaat palveluluokittain (poikkil. 28. pvä)

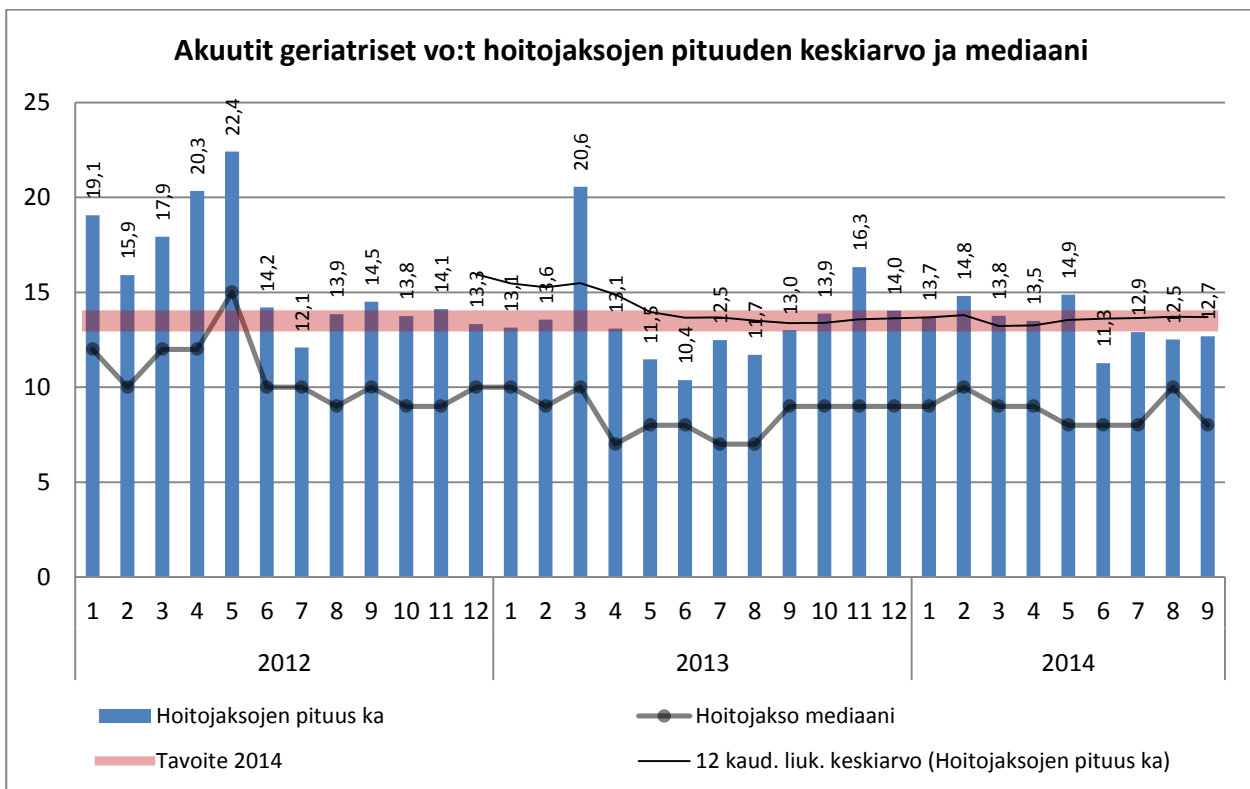
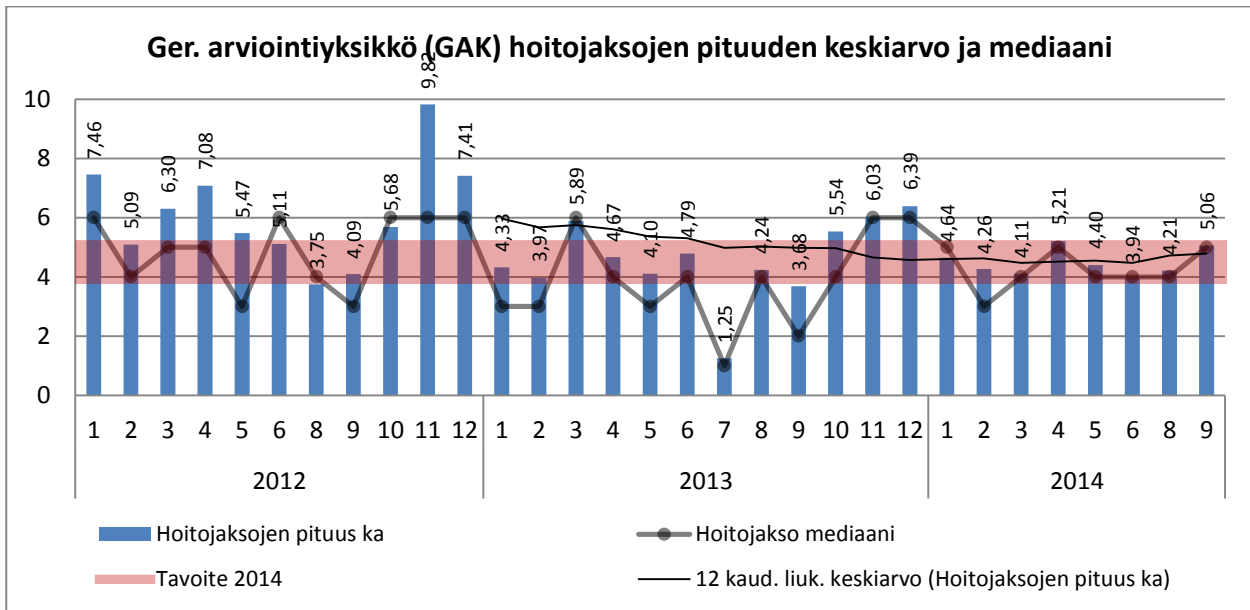


### Palveluseteliasiakkaat ikäryhmittäin (poikkil. 28. pvä)





## Geriatrinen sairaalahoito



## Ympäri vuorokautinen hoito

