

TURKU



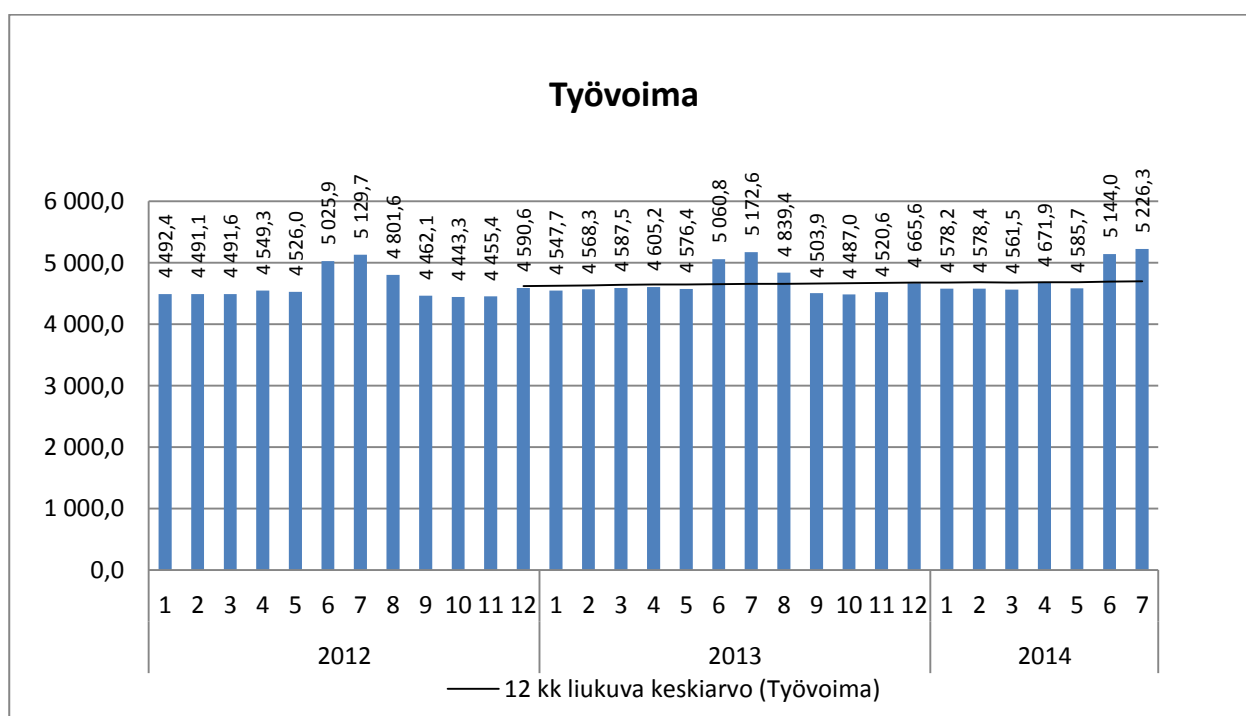
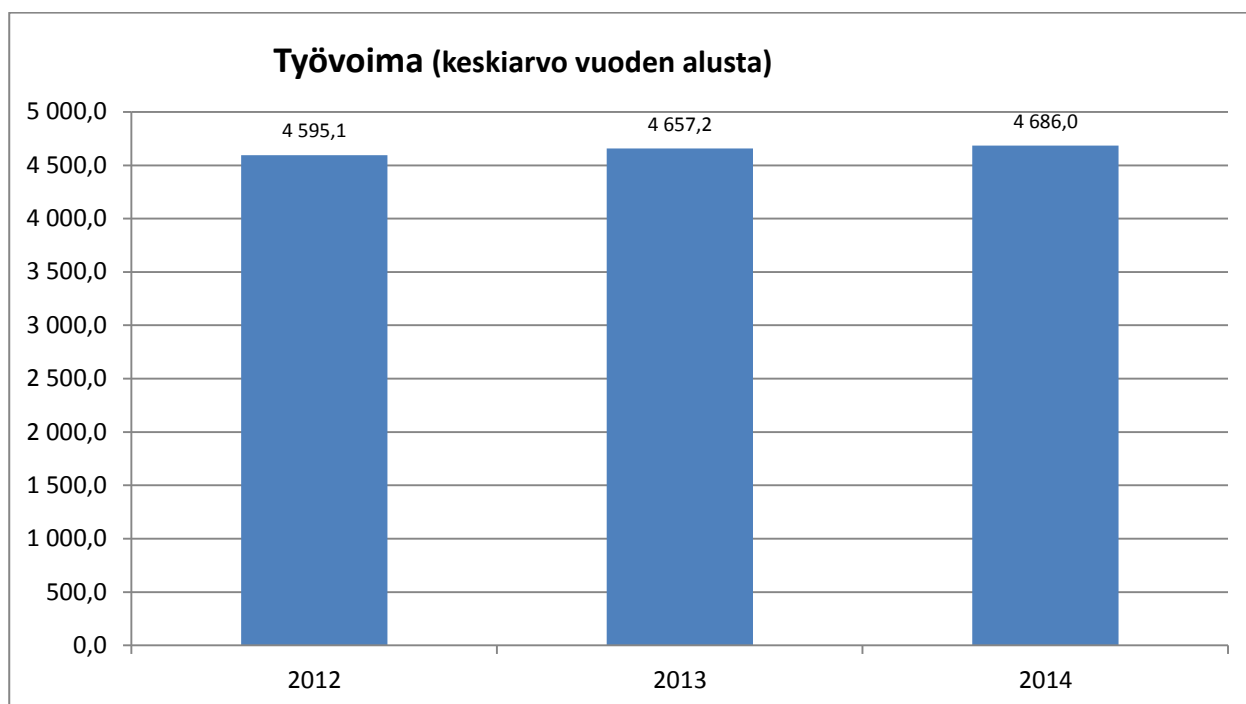
HYVINVOINTITOIMIALA

Kuukausiseuranta

Kesäkuu

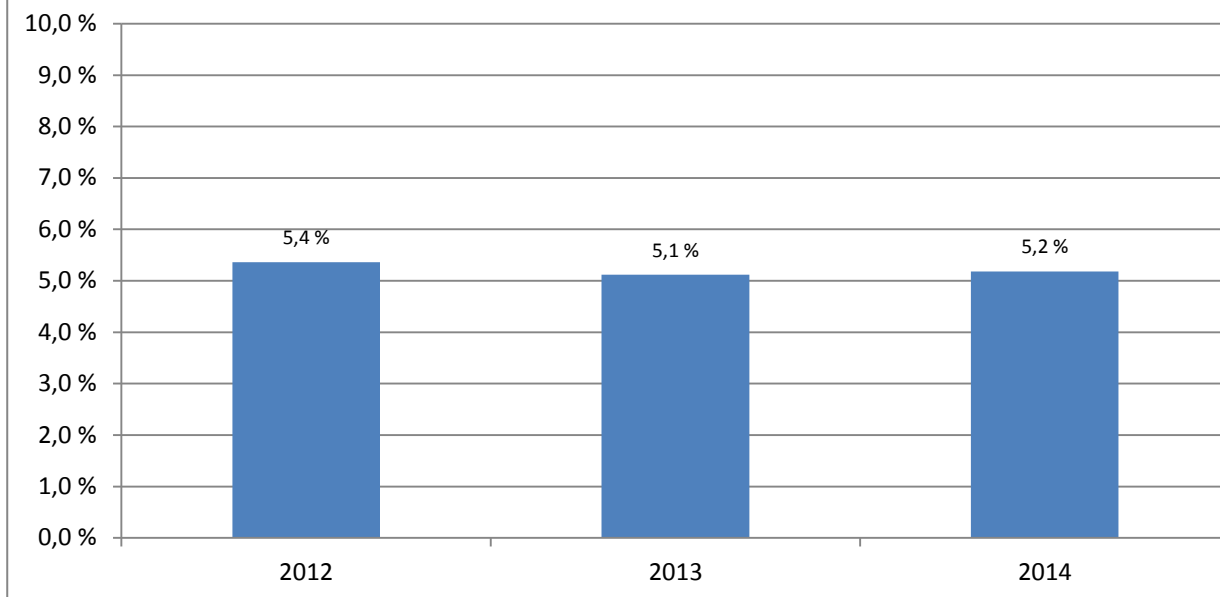
11.8.2014

HYVINVOINTITOIMIALA

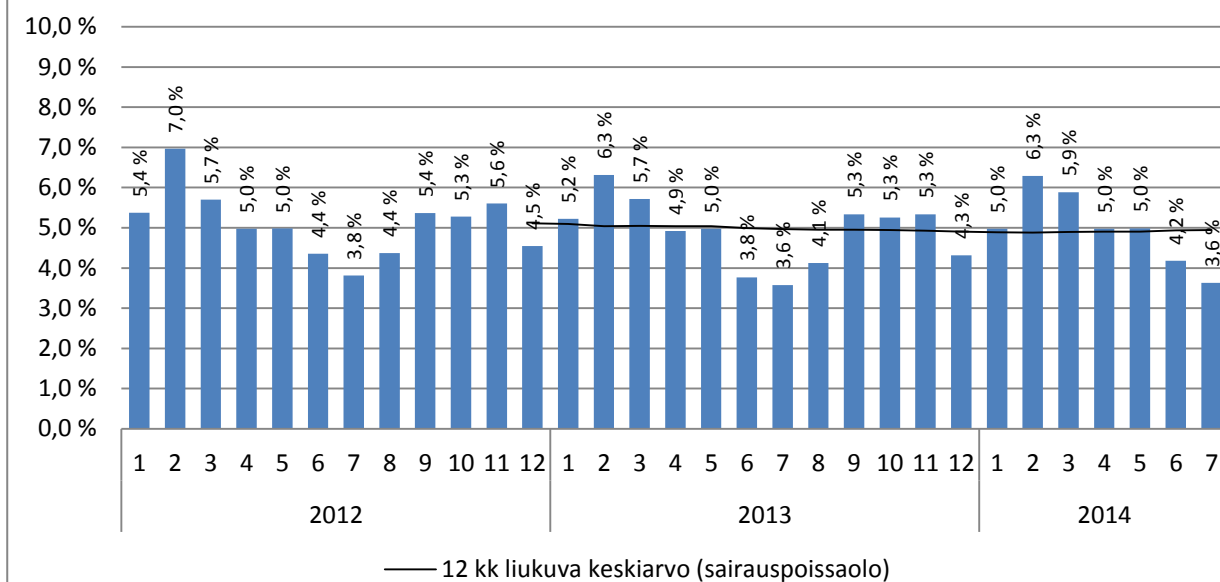


Huom! Vuoden 2012 organisaatiosta poistettu työterveyshuolto ja ympäristöterveydenhuolto.
 Keskiarvo vuoden alusta näyttää vertailun vastaavaan ajankohtaan muina vuosina (tammi-kesäkuu).
 Henkilöstötiedot päivitetty 2.8.2014.

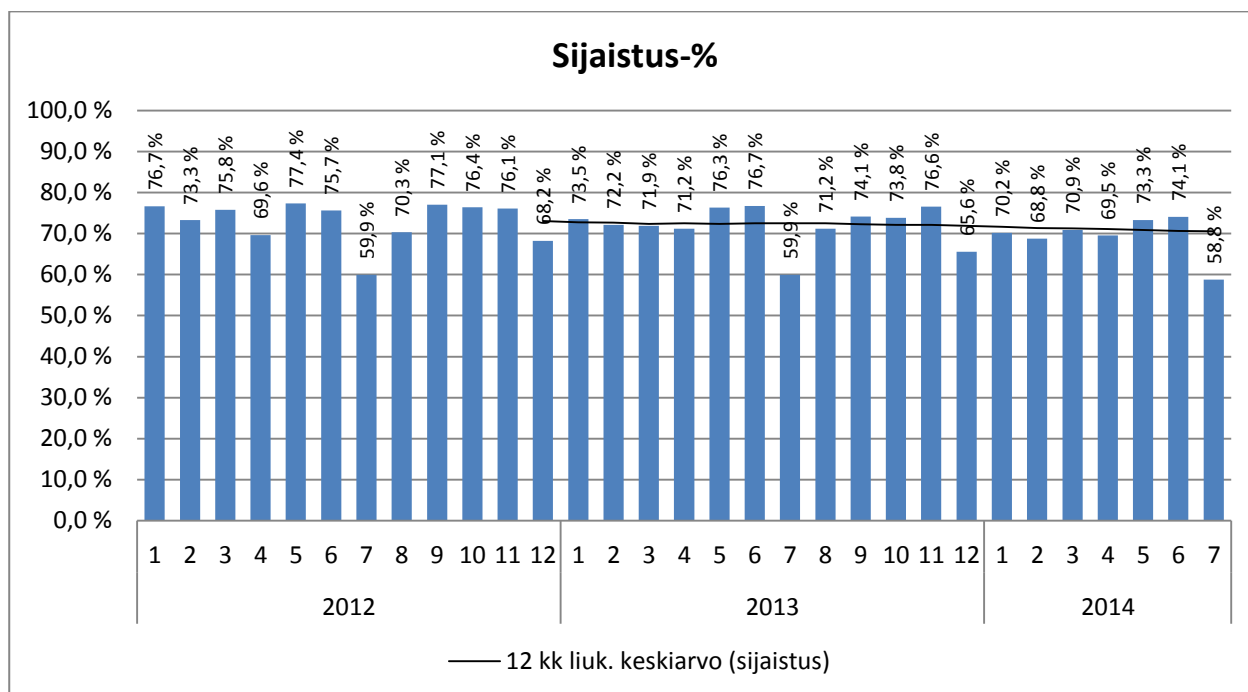
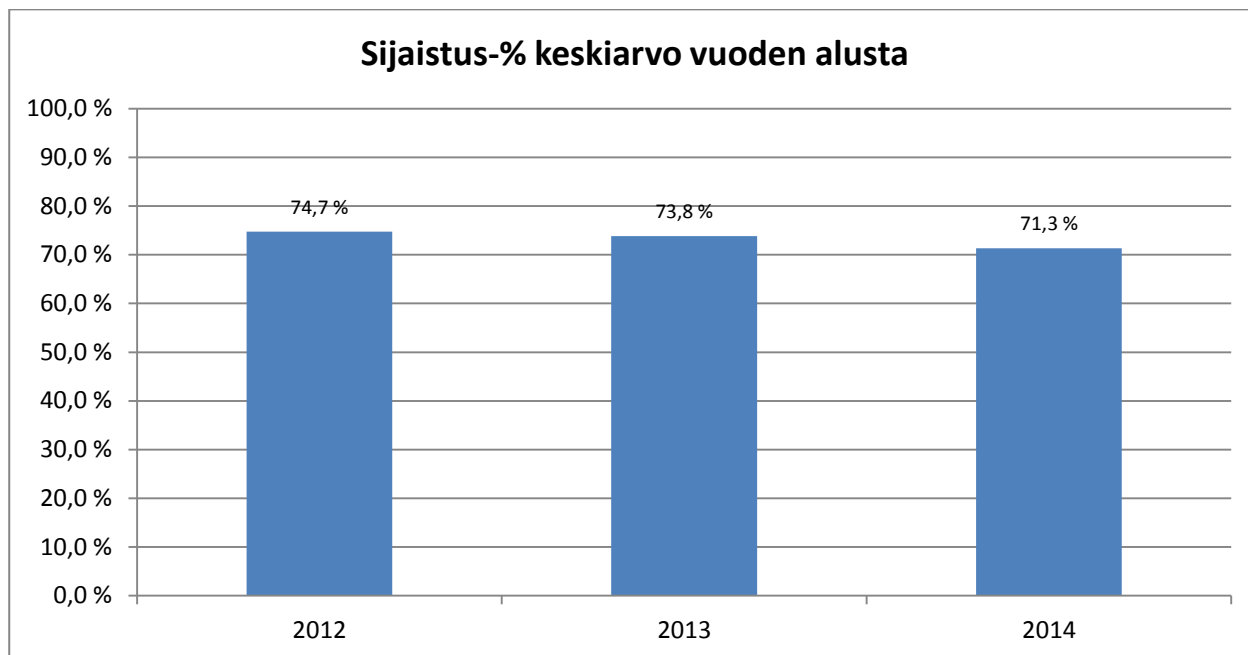
Sairauspoissaolo keskiarvo vuoden alusta



Sairauspoissaolo-%

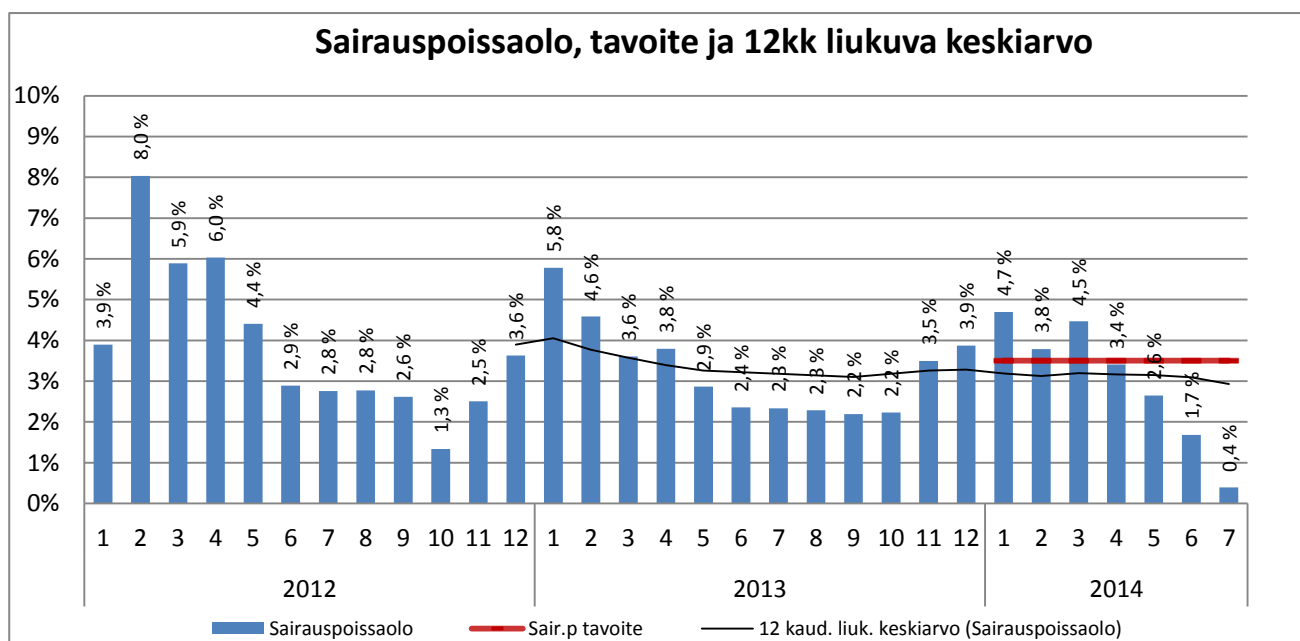
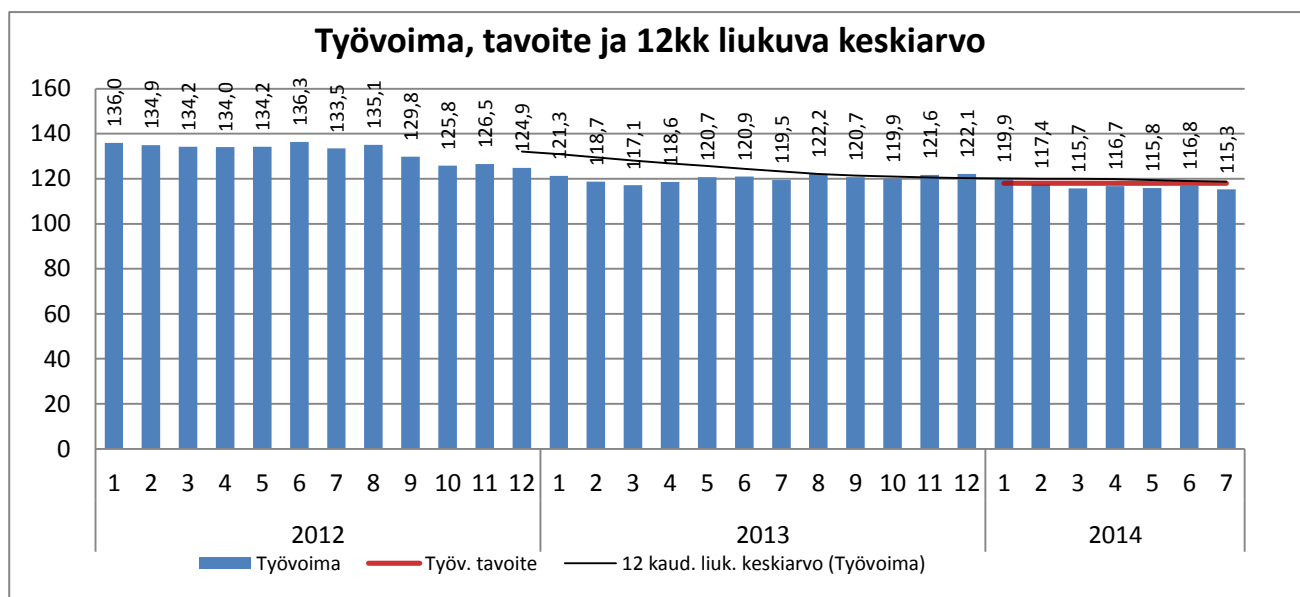


Huom! Vuoden 2012 organisaatiosta poistettu työterveyshuolto ja ympäristöterveydenhuolto.
Keskiarvo vuoden alusta näyttää vertailun vastaavaan ajankohtaan muina vuosina (tammi-kesäkuu).
Henkilöstötiedot päivitetty 2.8.2014.



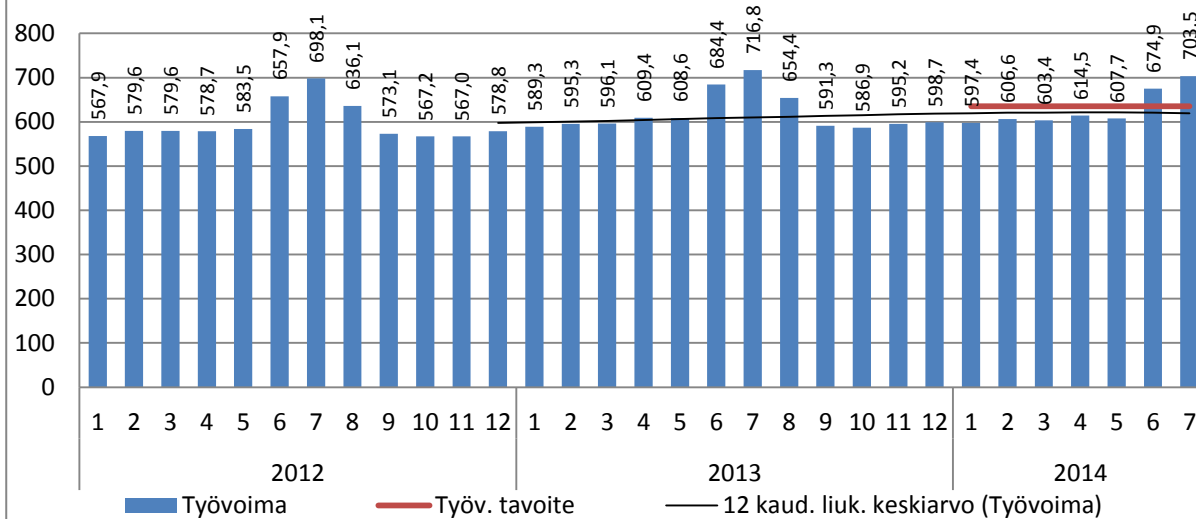
Huom! Vuoden 2012 organisaatiosta poistettu työterveyshuolto ja ympäristöterveydenhuolto.
 Keskiarvo vuoden alusta näyttää vertailun vastaavaan ajankohtaan muina vuosina (tammi-kesäkuu).
 Henkilöstötiedot päivitetty 2.8.2014.

HALLINTO

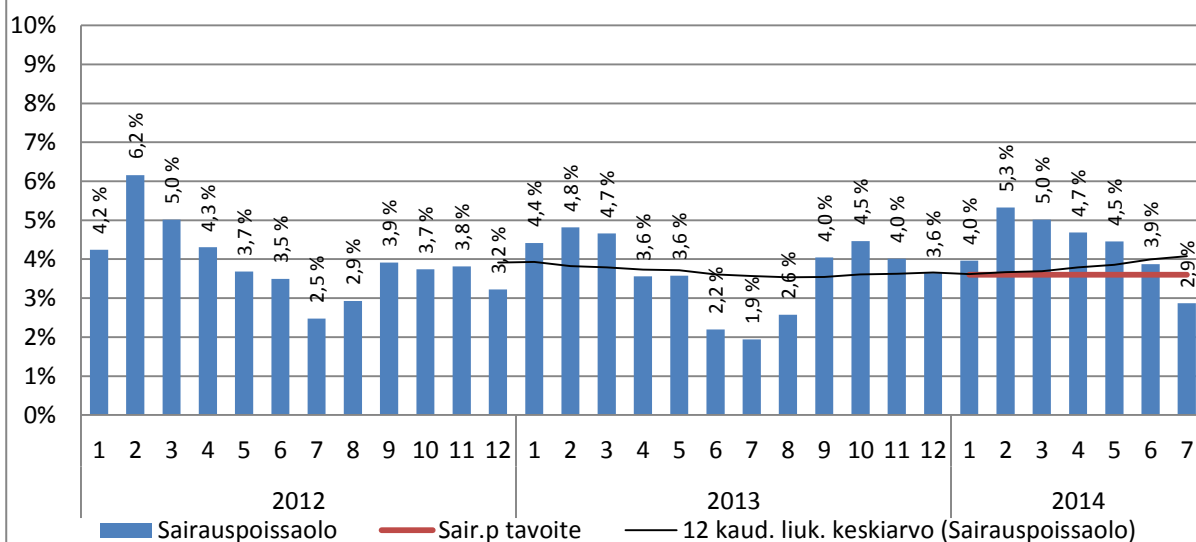


SOSIAALITYÖ

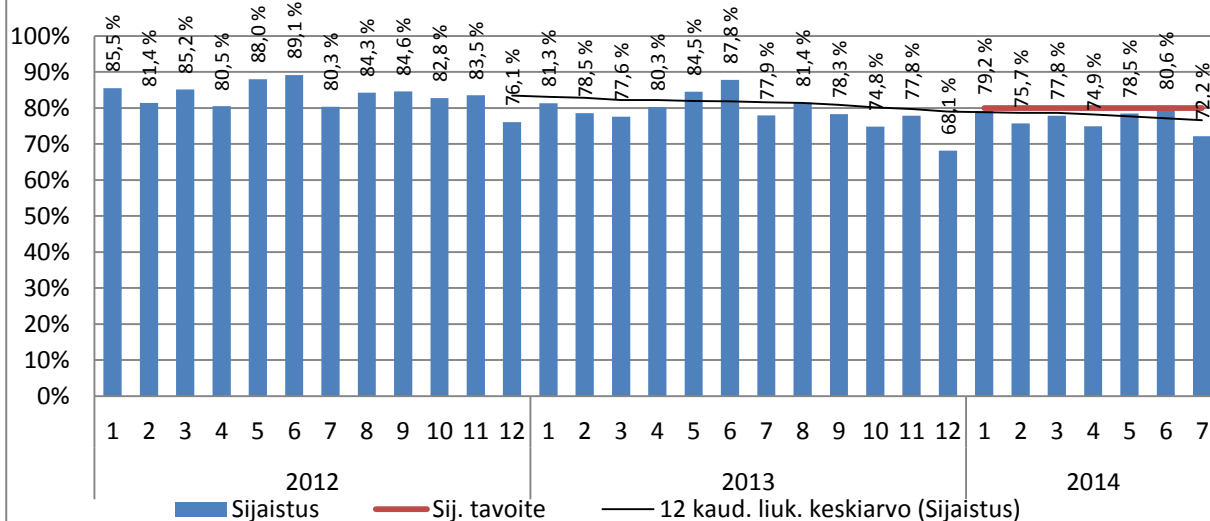
Työvoima, tavoite ja 12kk liukuva keskiarvo



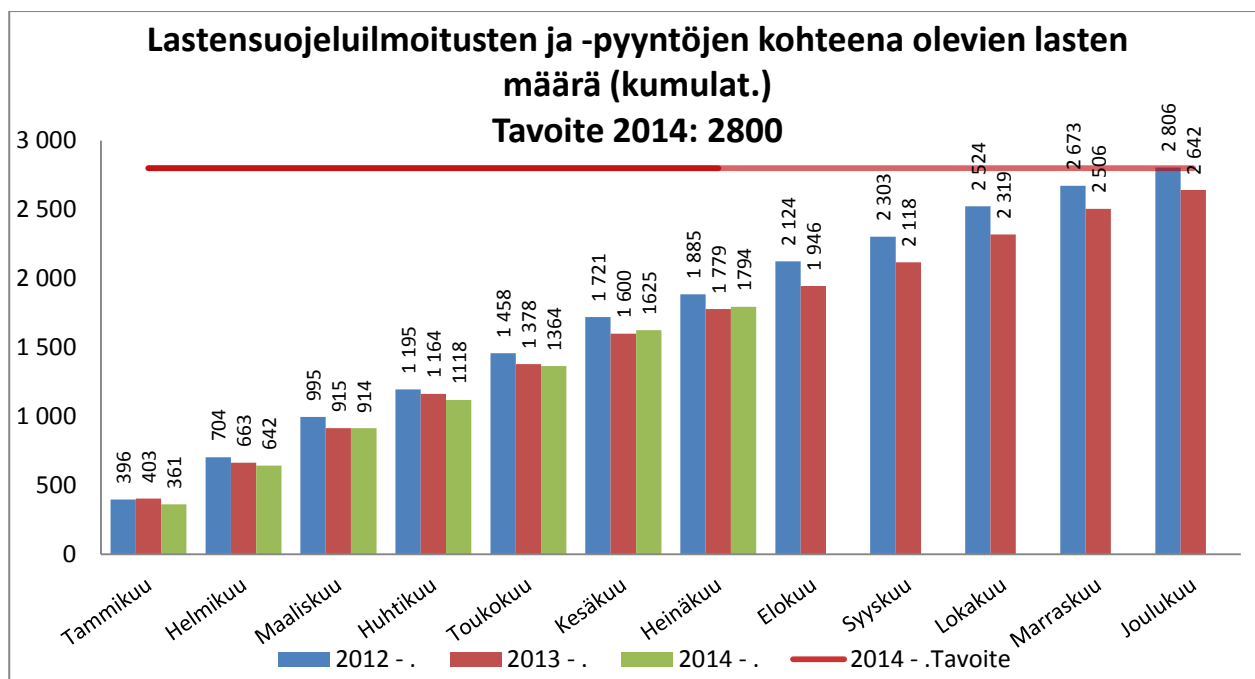
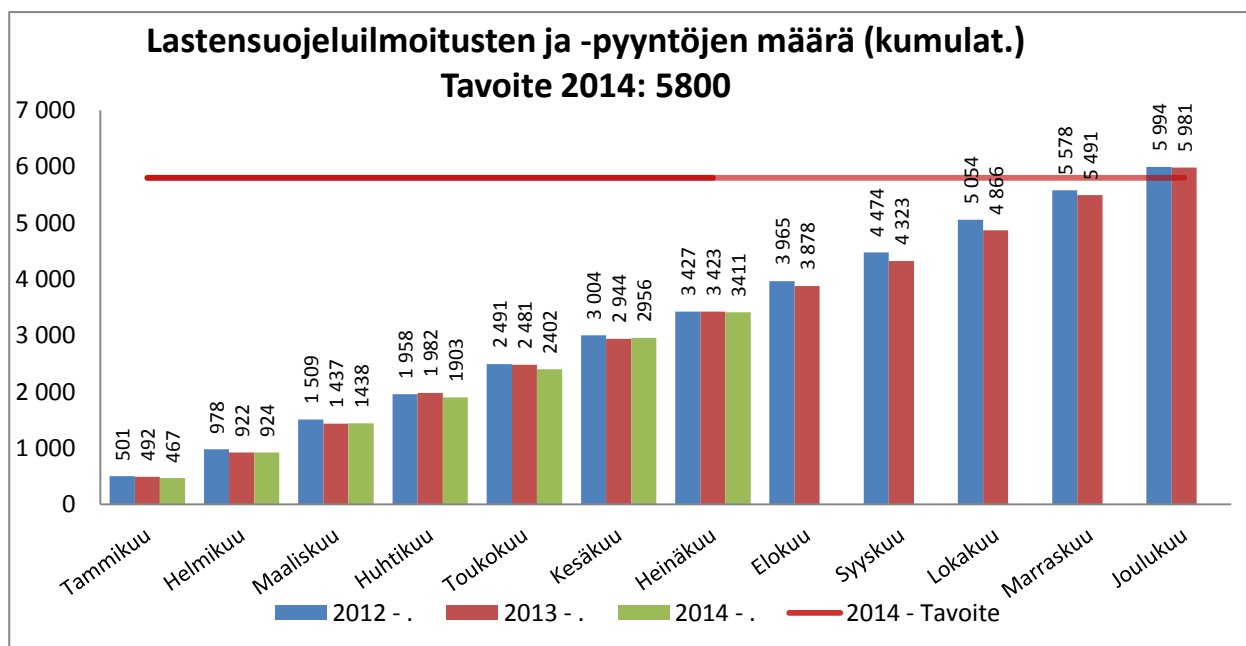
Sairauspoissaolo, tavoite ja 12kk liukuva keskiarvo

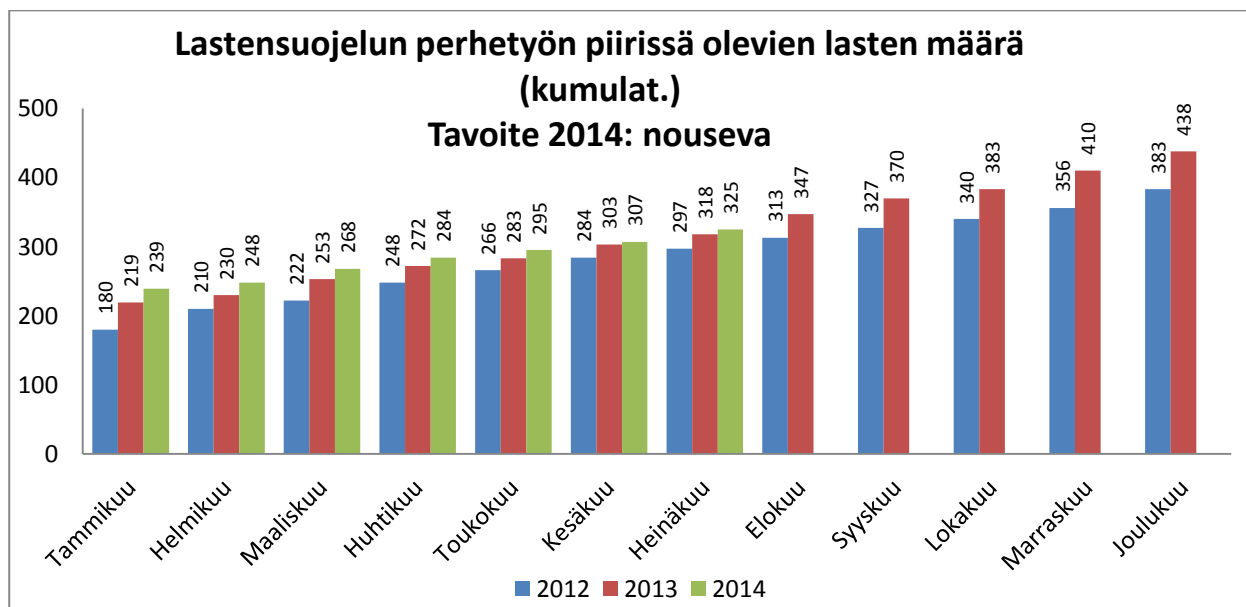
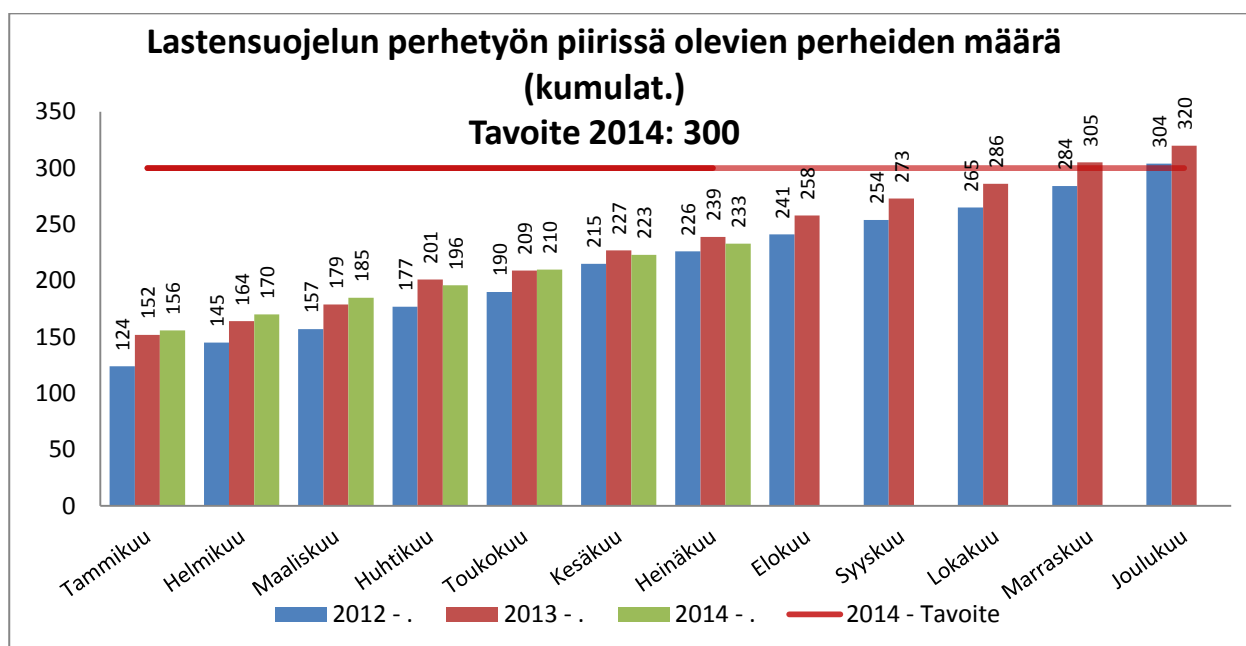
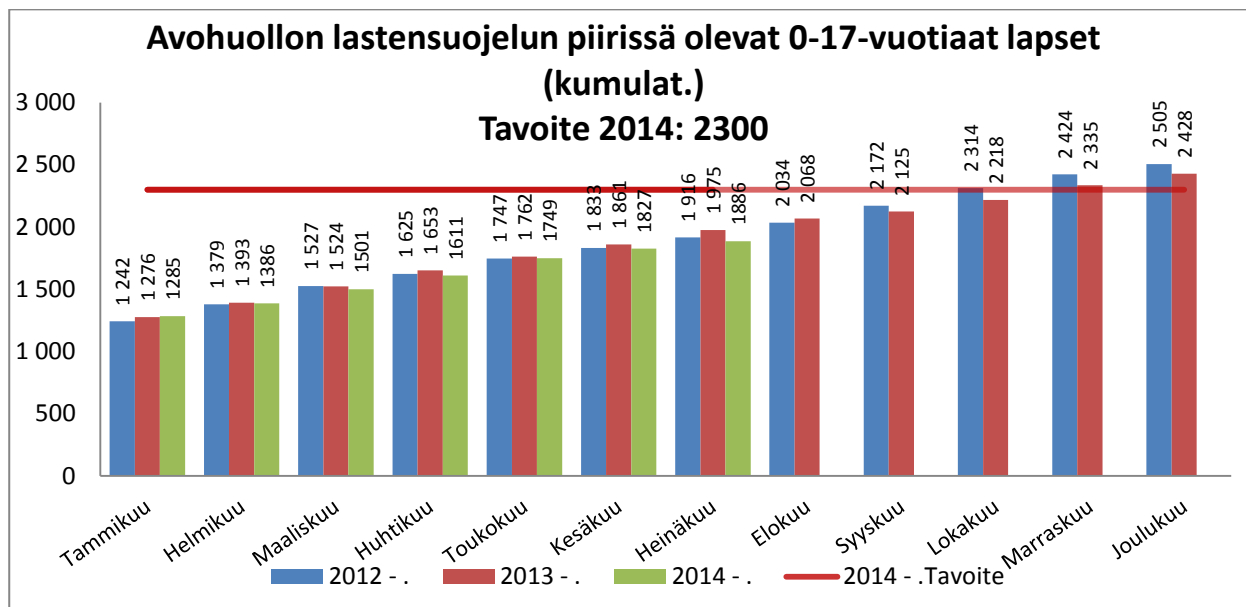


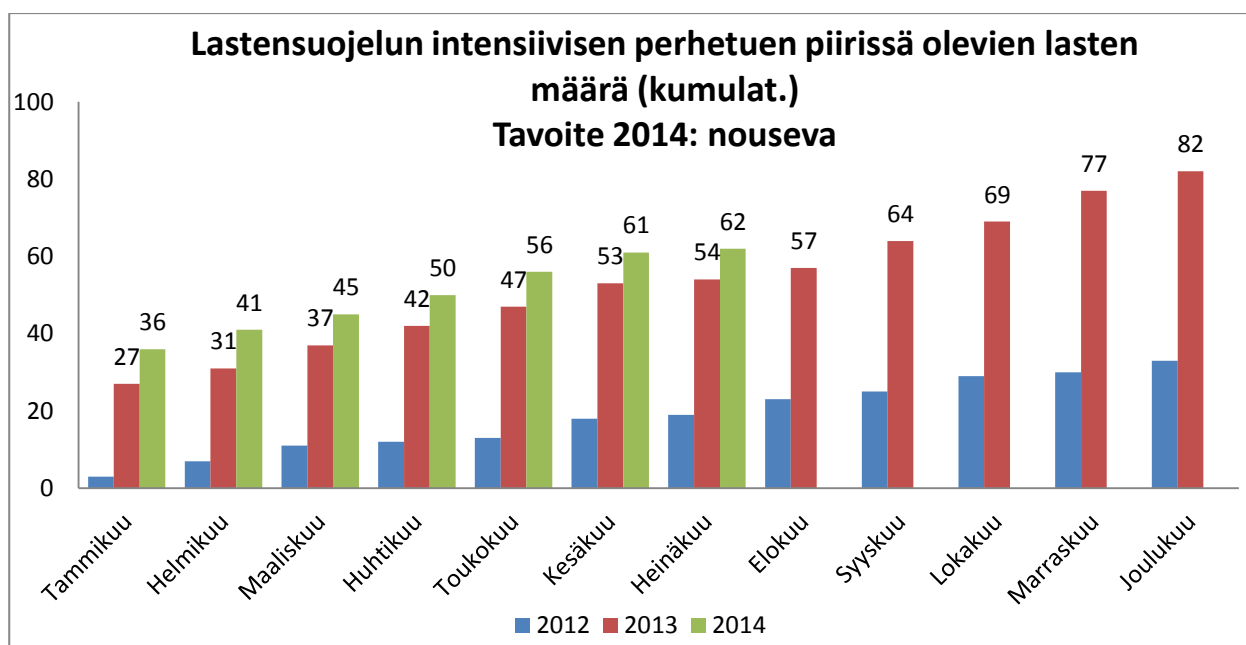
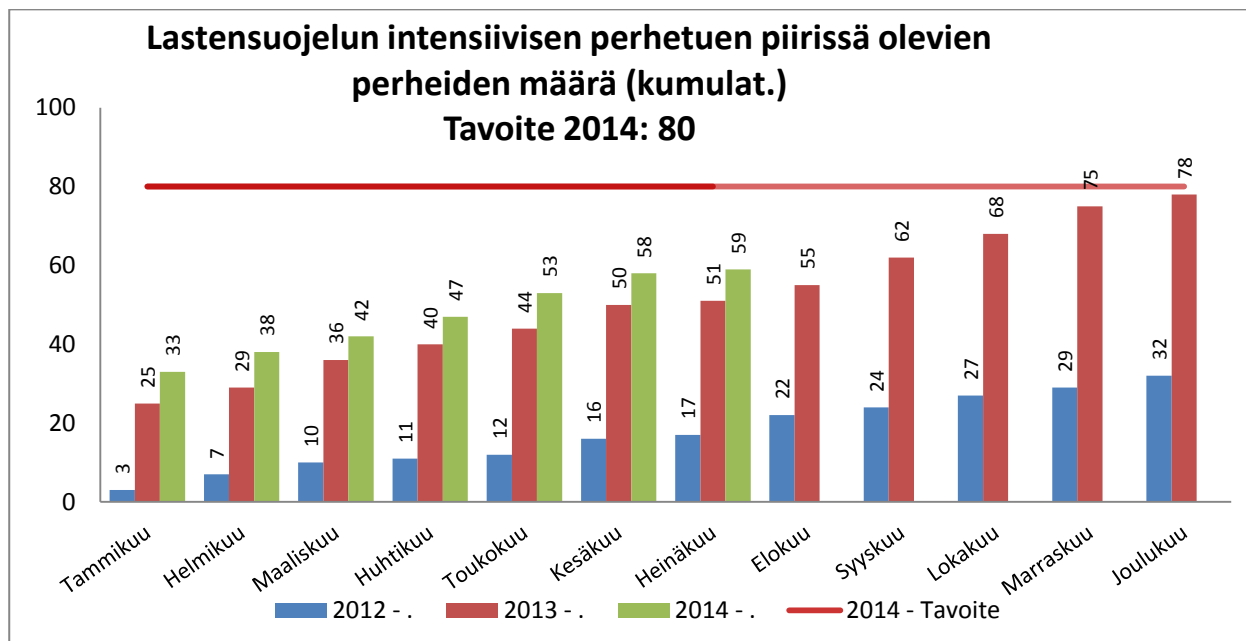
Sijaistus, tavoite ja 12kk liukuva keskiarvo



Avohuollon sosiaalityö

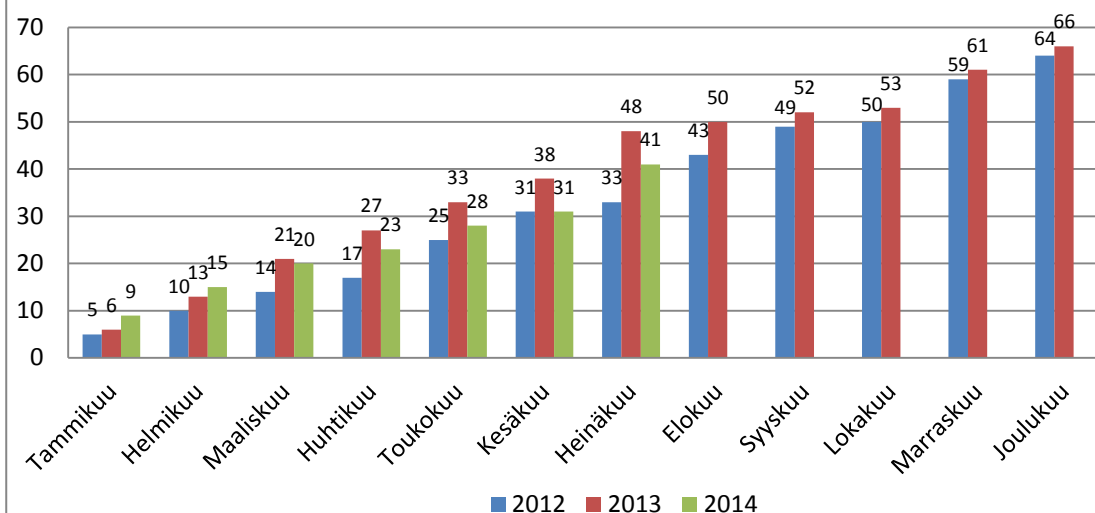




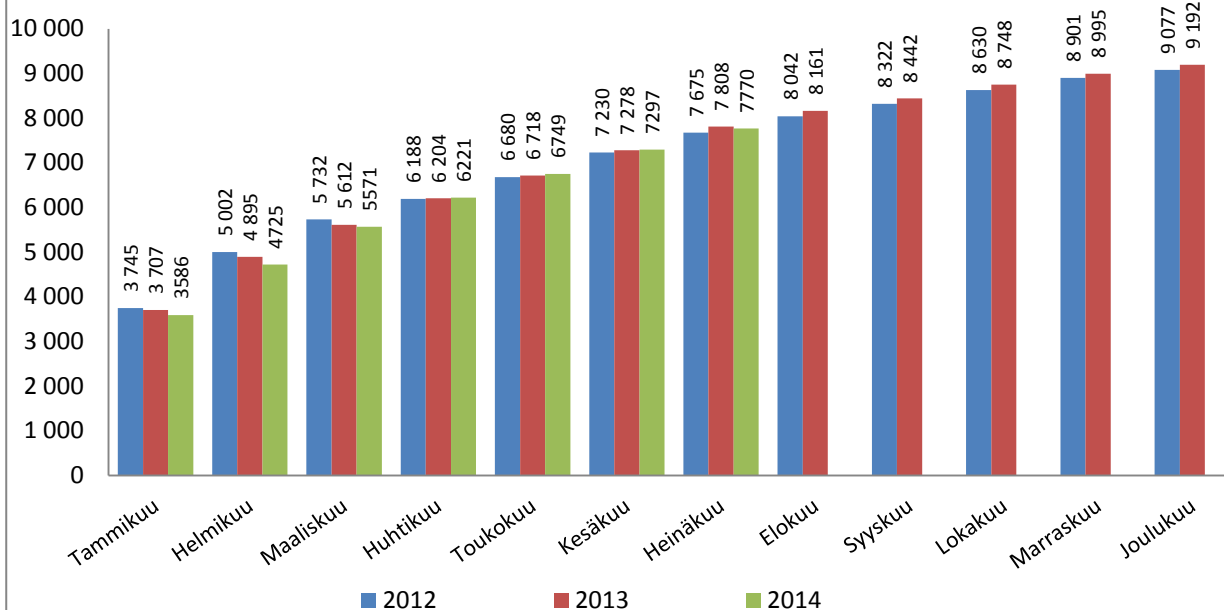


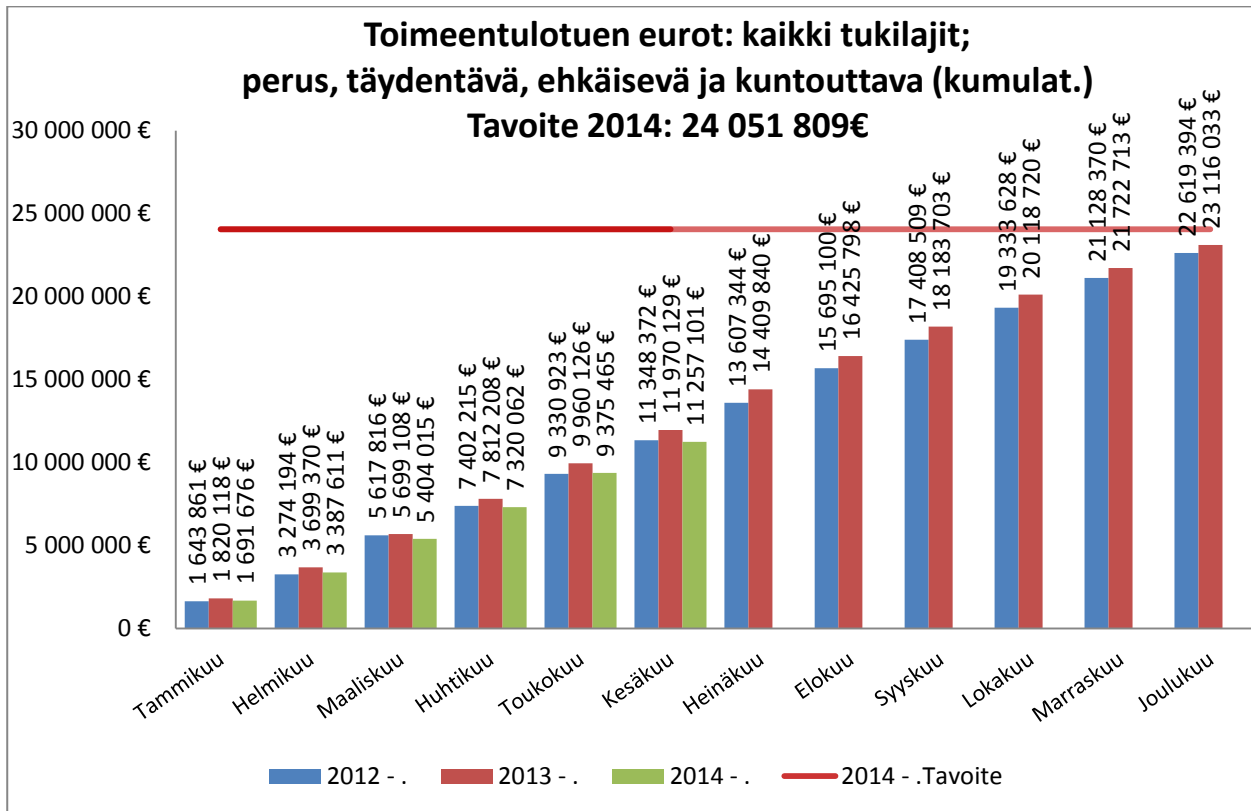
Uusien huostaanotettujen lasten määrä (kumulat.)

Tavoite 2014: laskeva

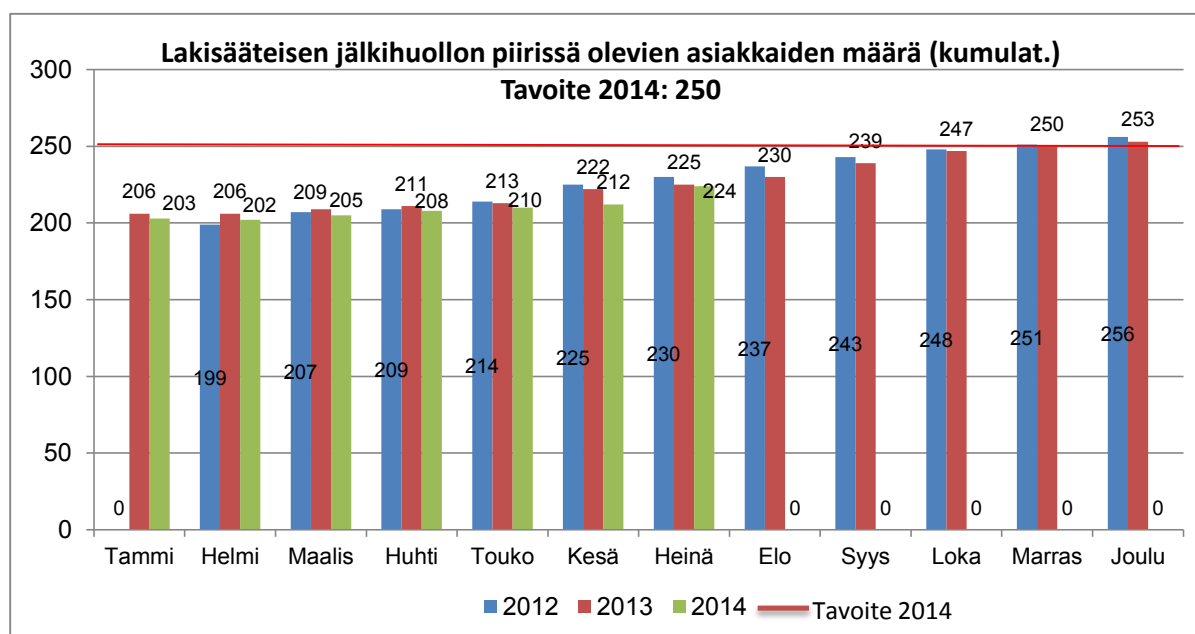
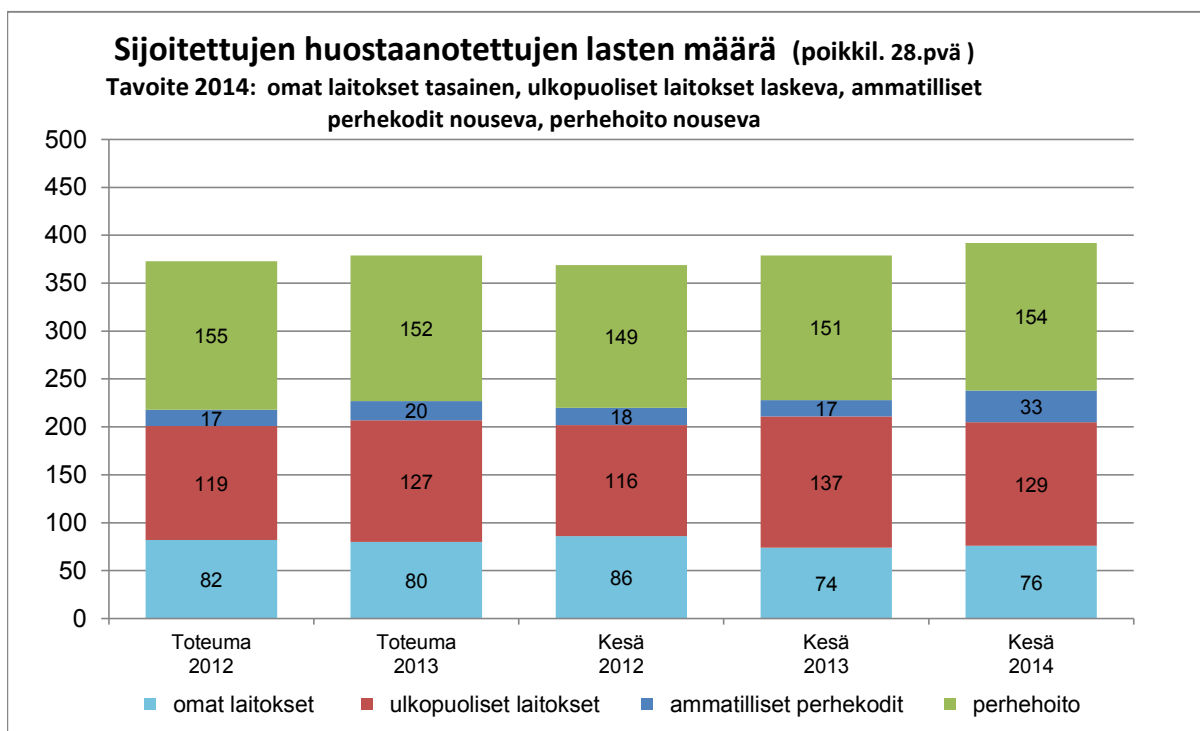


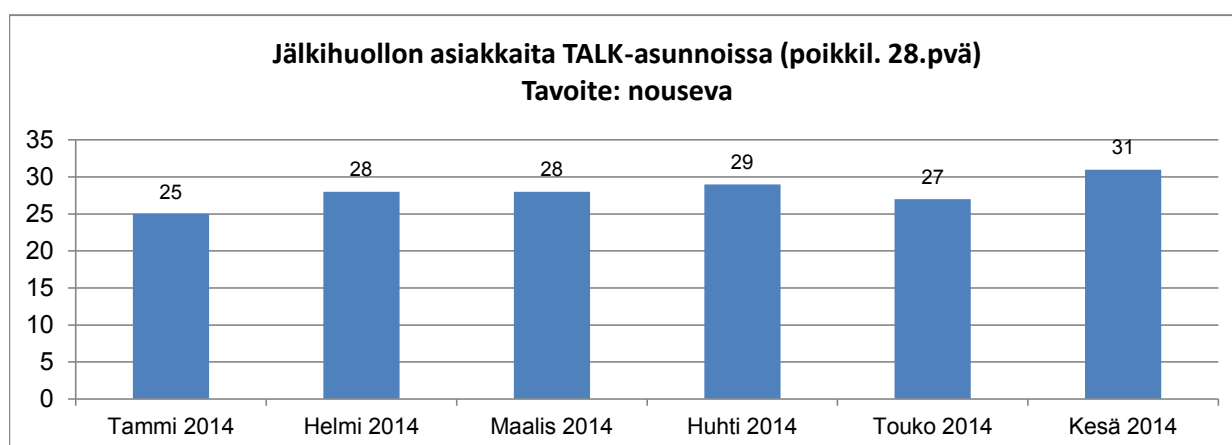
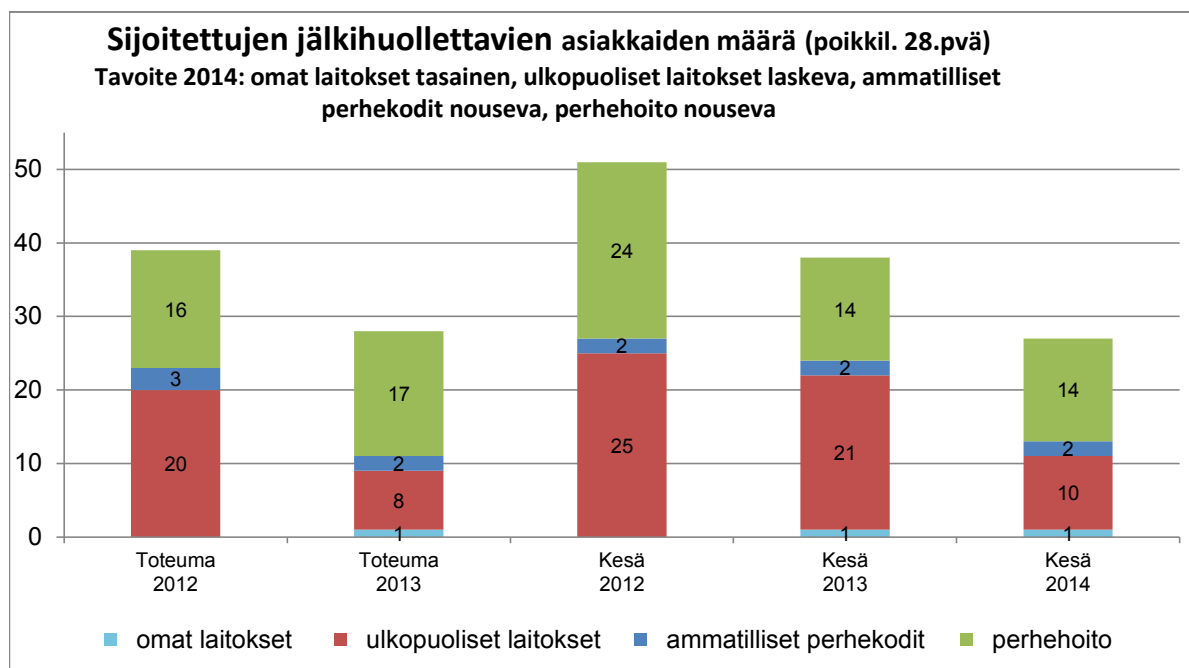
Toimentulotukea saavien kotitalouksien määrä (kumulat.)



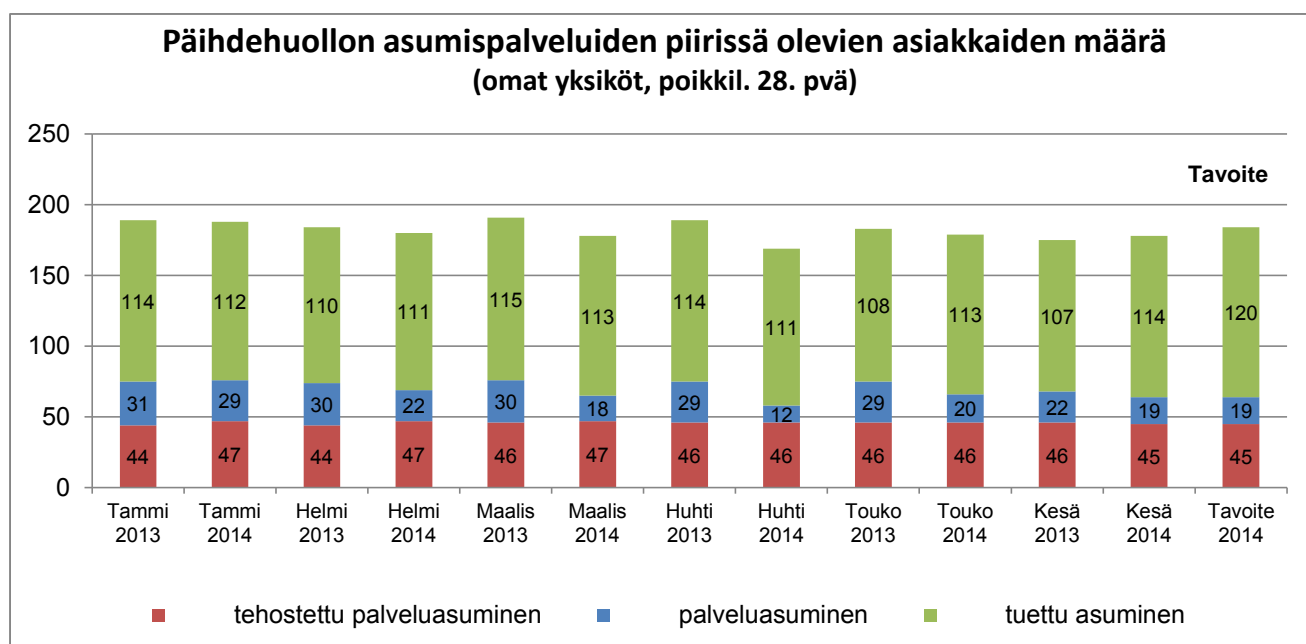
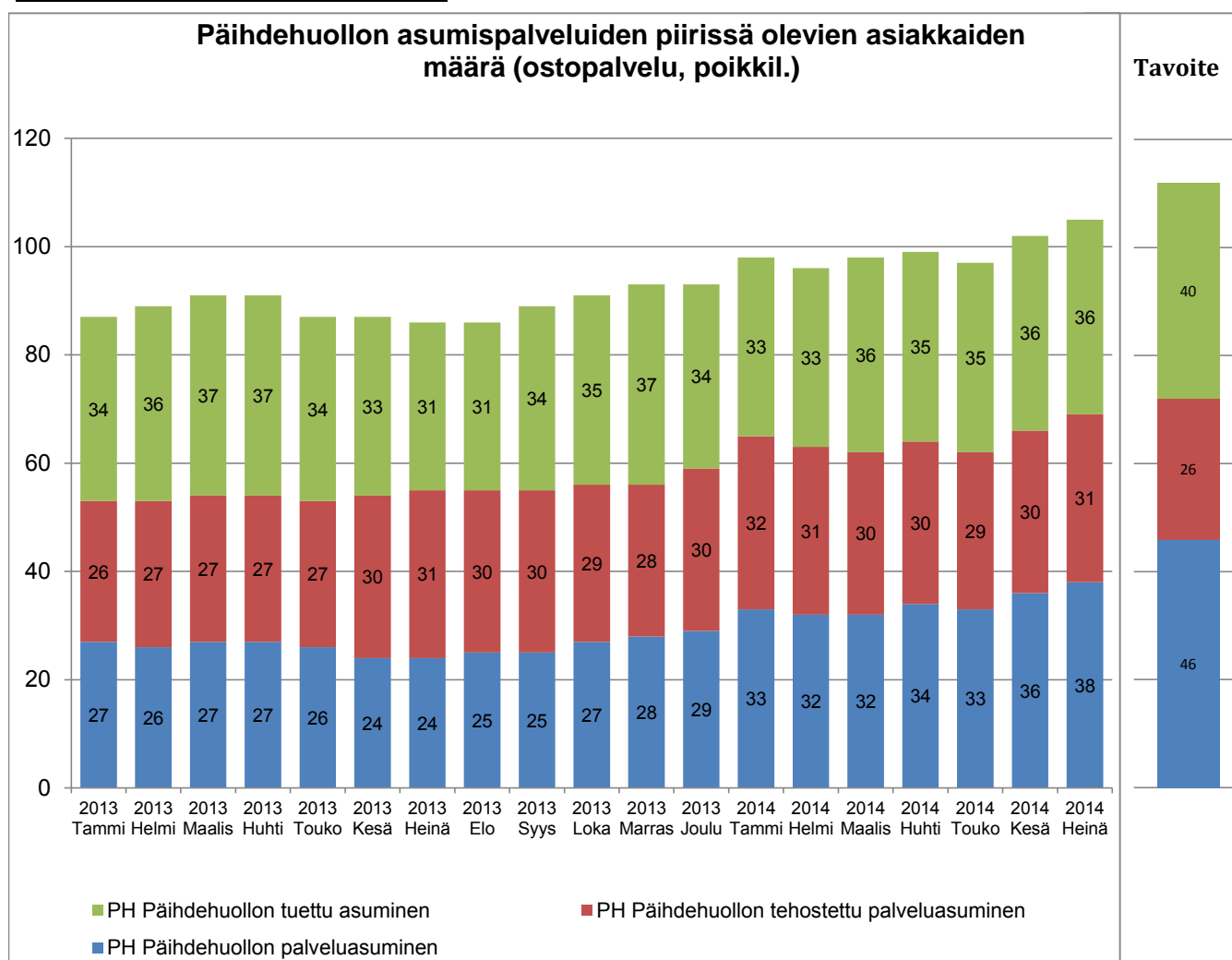


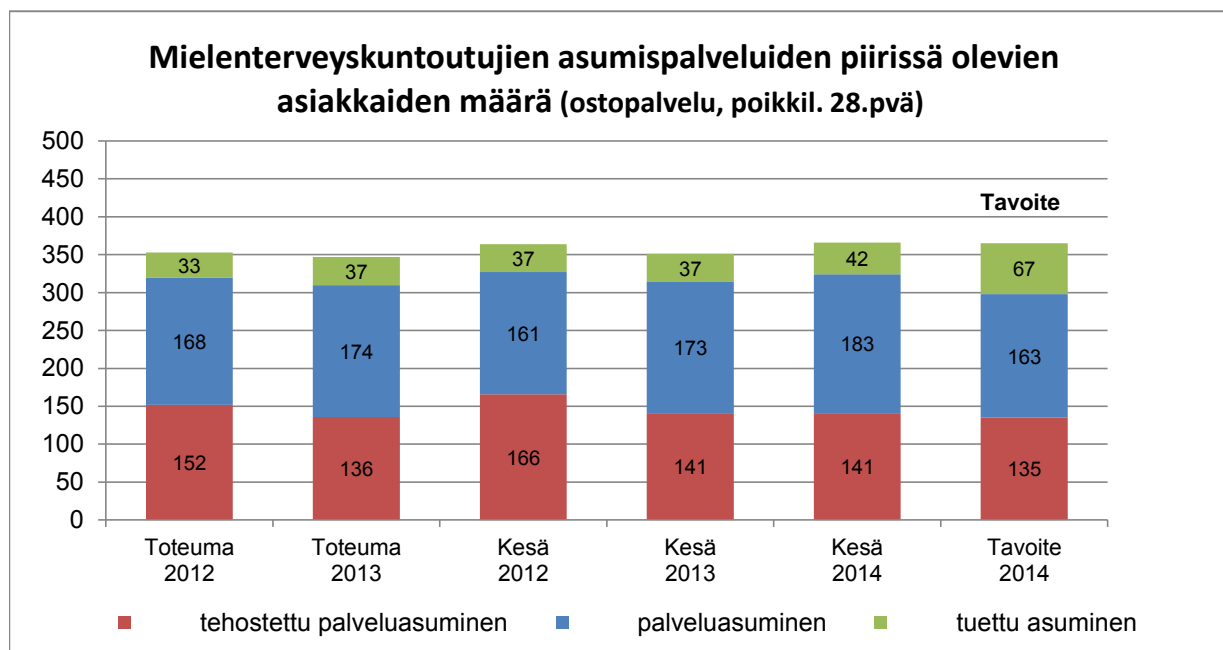
Sijaishuollon sosiaalityö



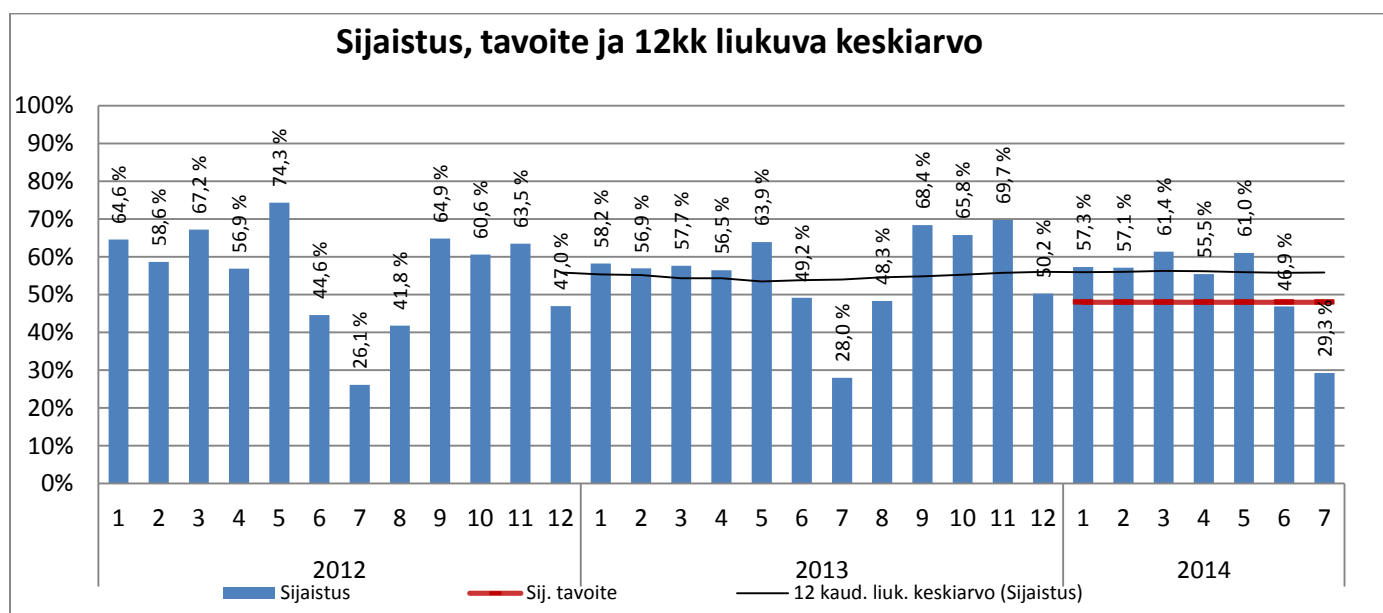
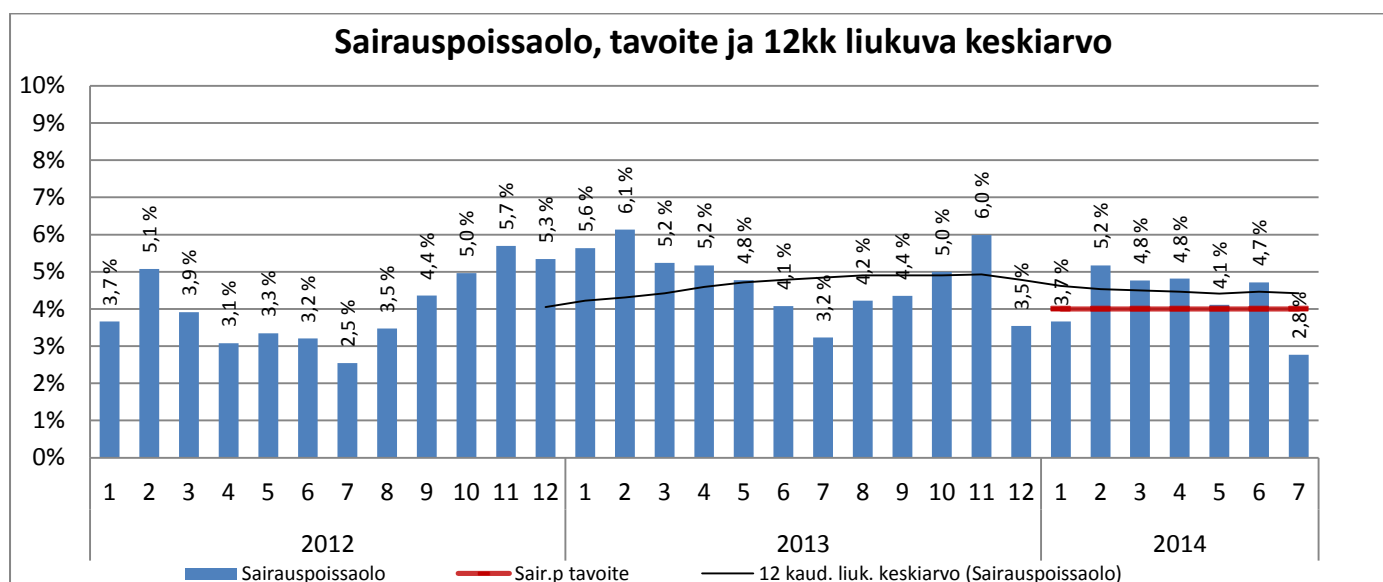
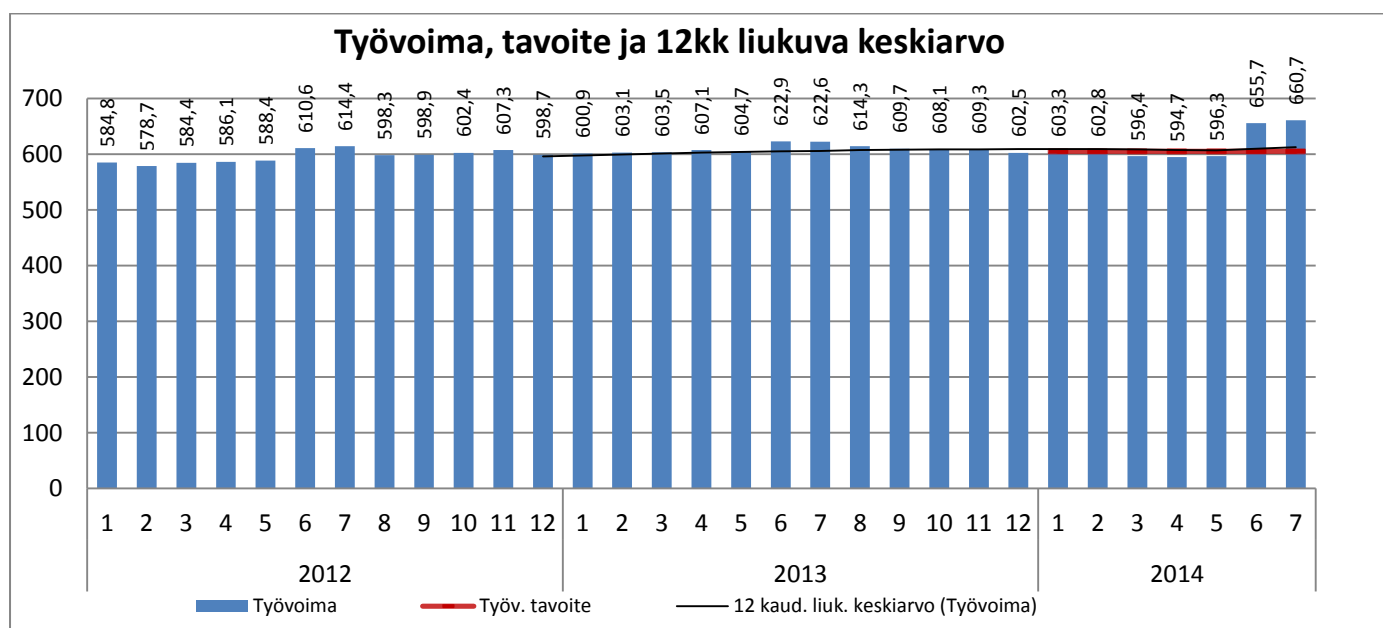


Sosiaalityön erityispalvelut

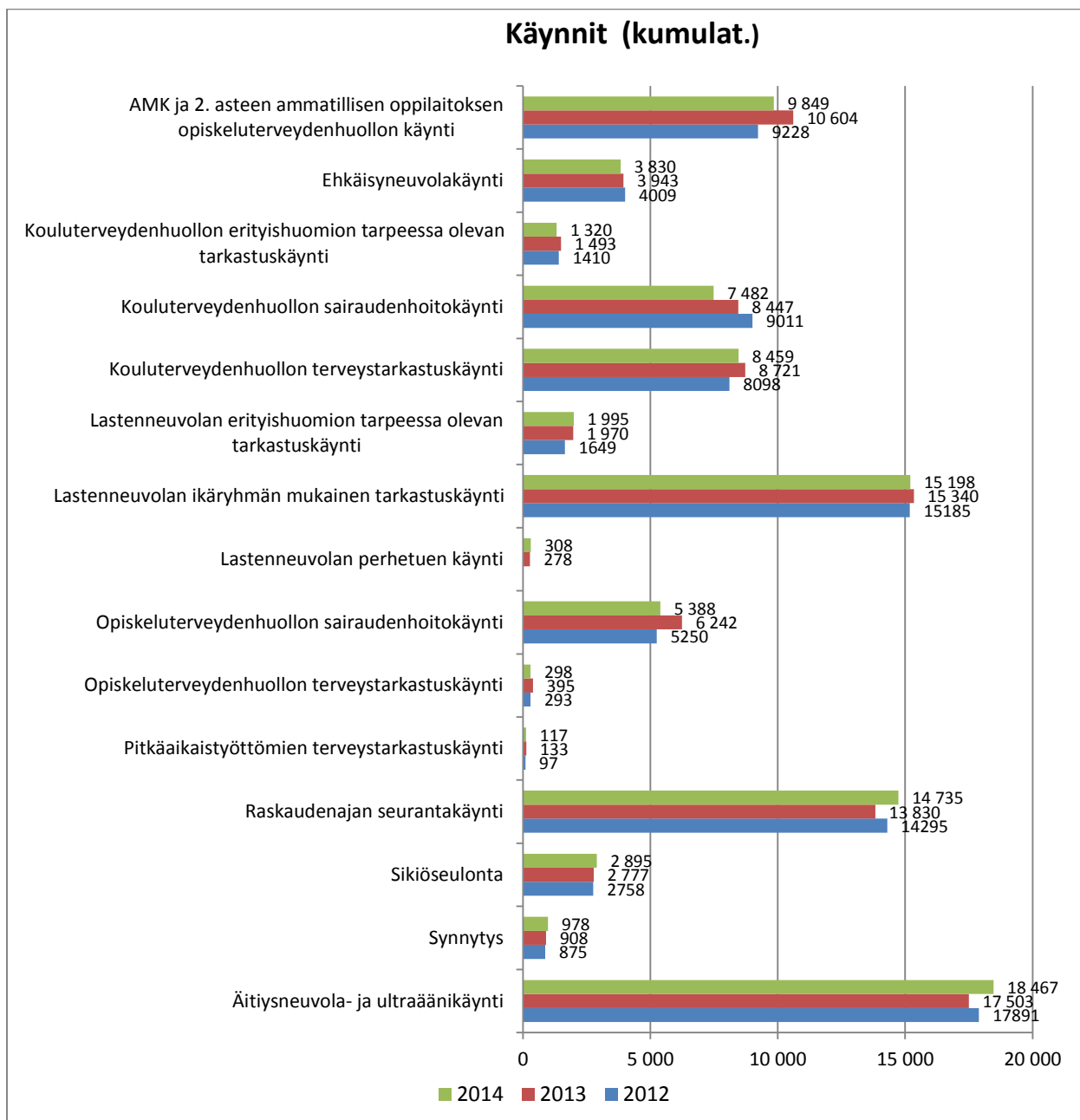




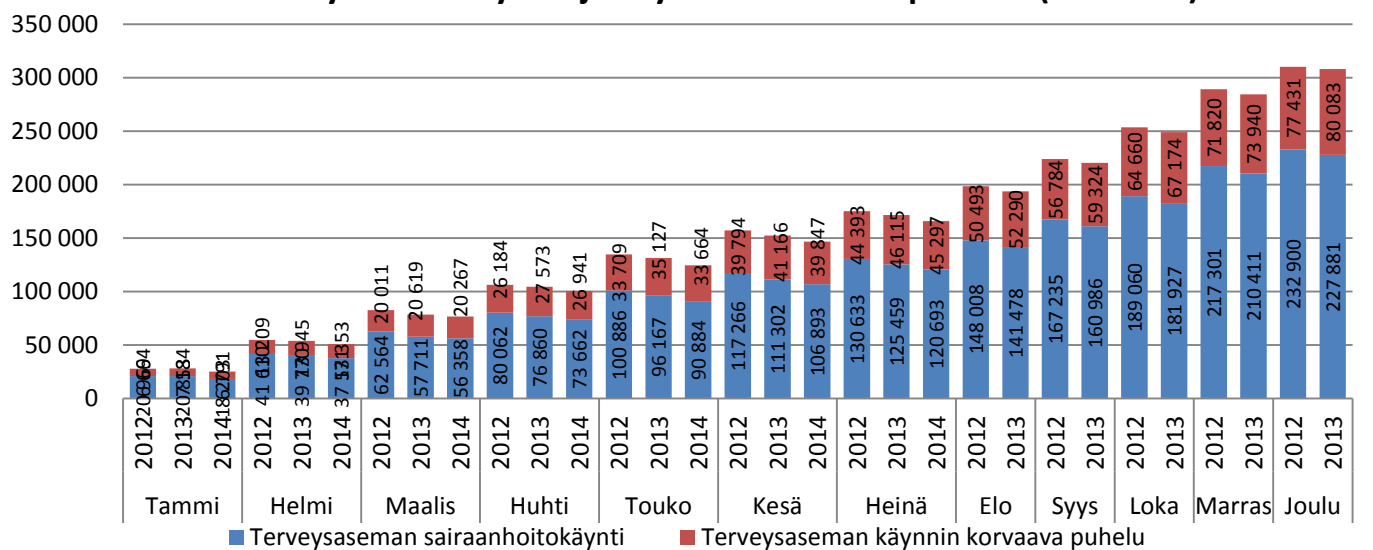
PERUSTERVEYDENHUOLTO



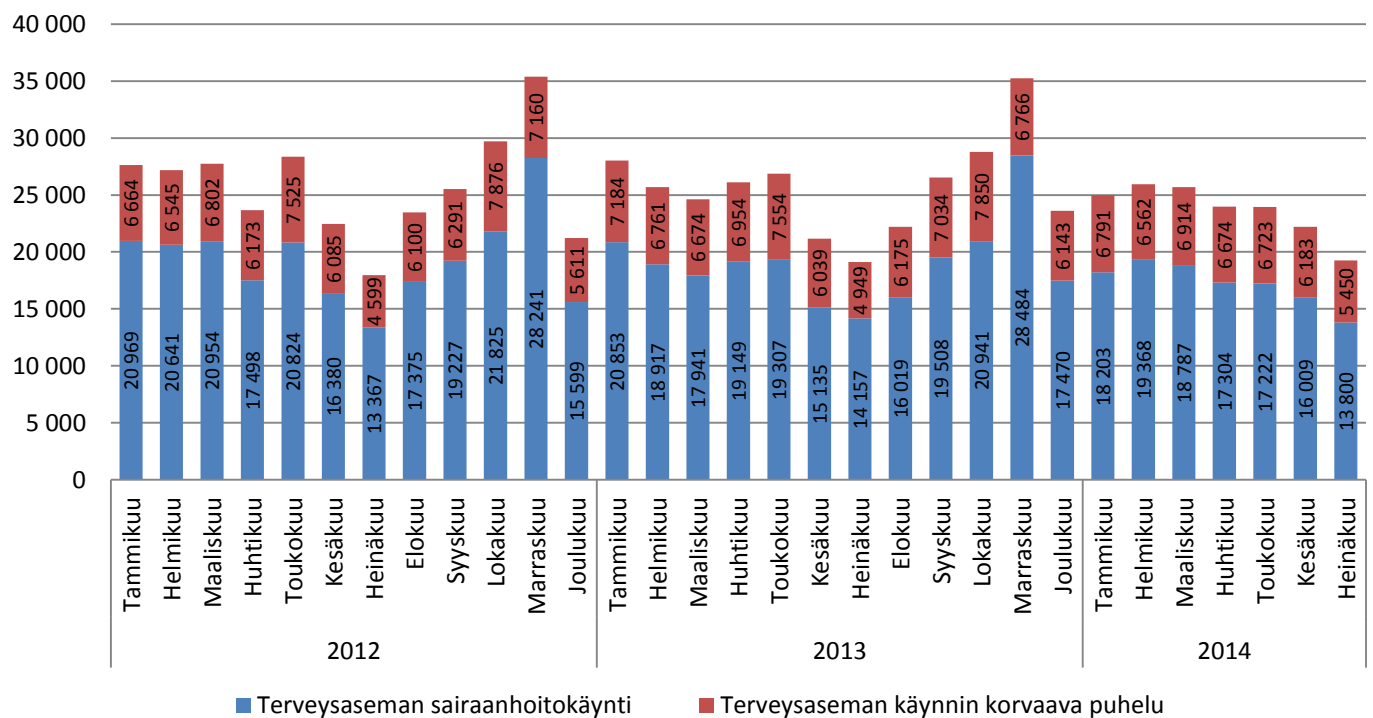
Kumulat. tarkoittaa asiastapahtumien summaa tai eri asiakkaiden määrää vuoden alusta raportointikuukauden loppuun (tammi-kesäkuu).



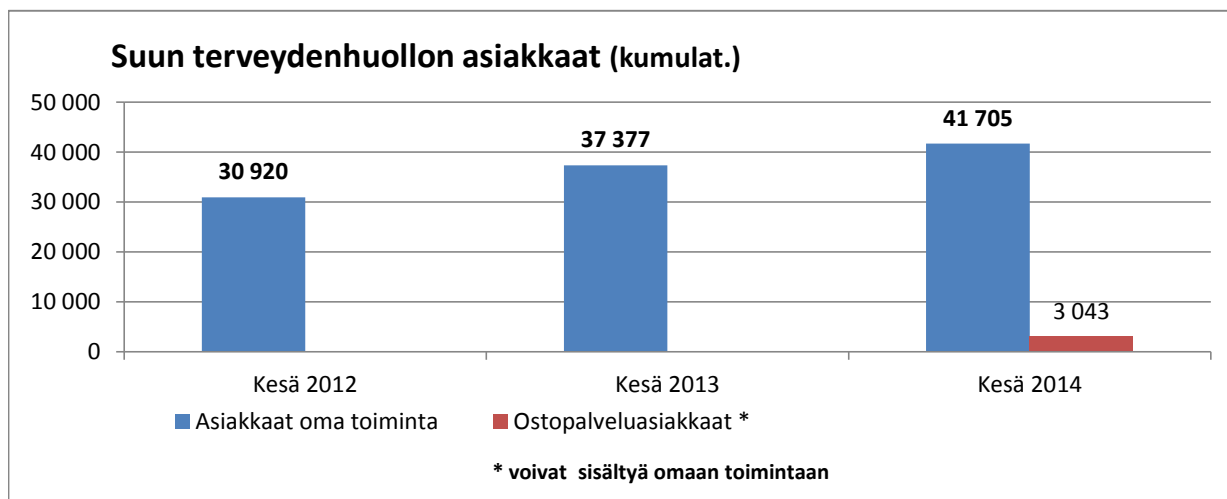
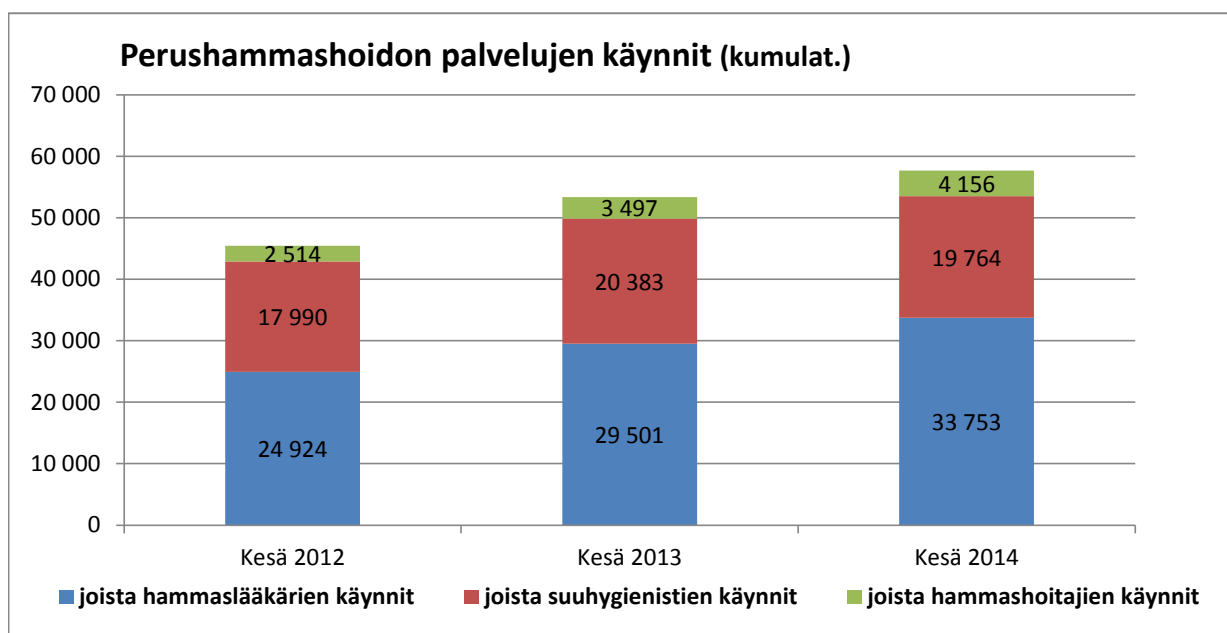
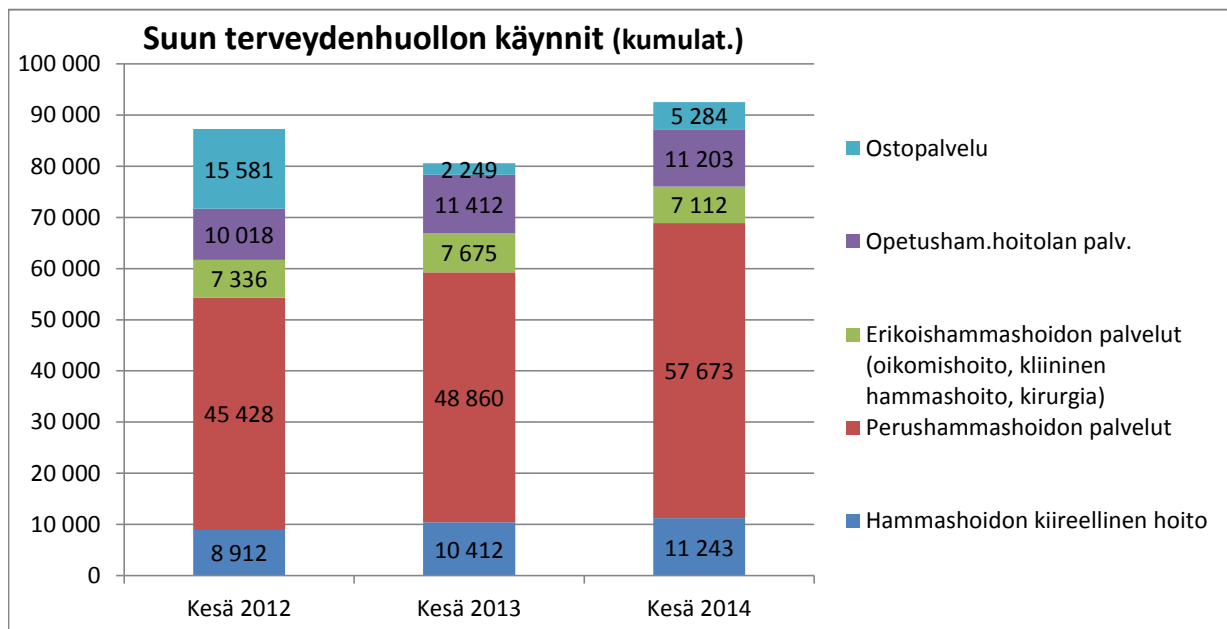
Terveysasemakäynnit ja käynnin korvaavat puhelut (kumulat.)



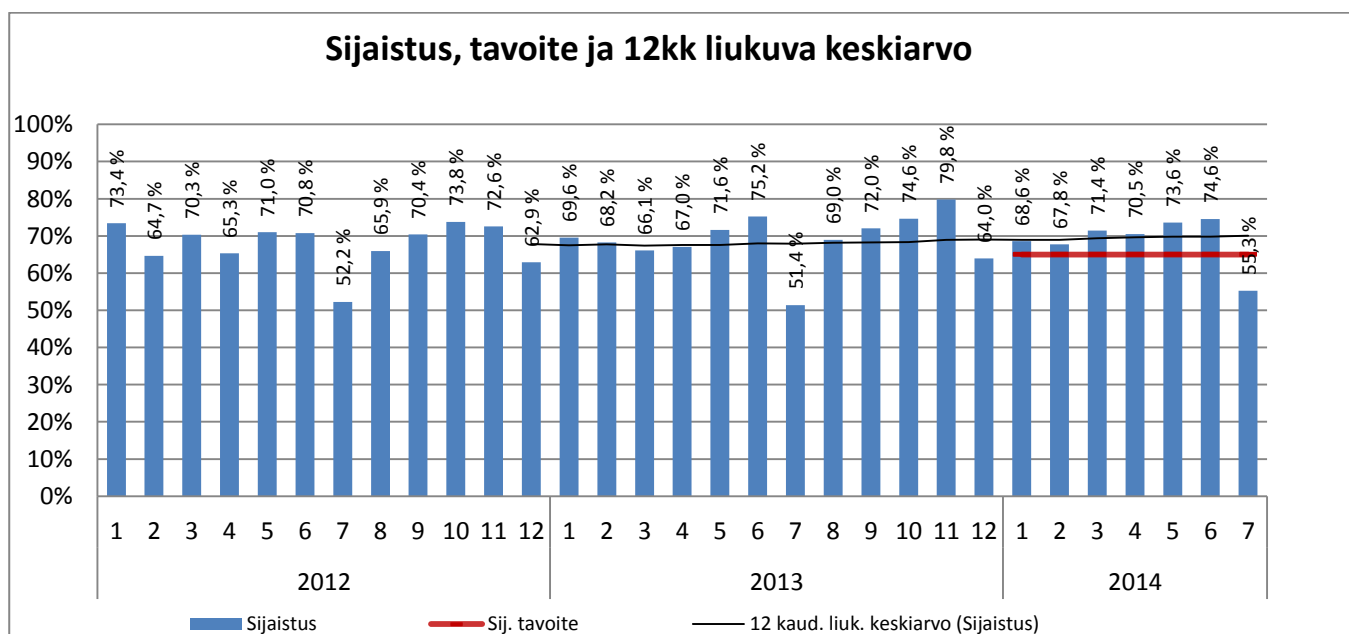
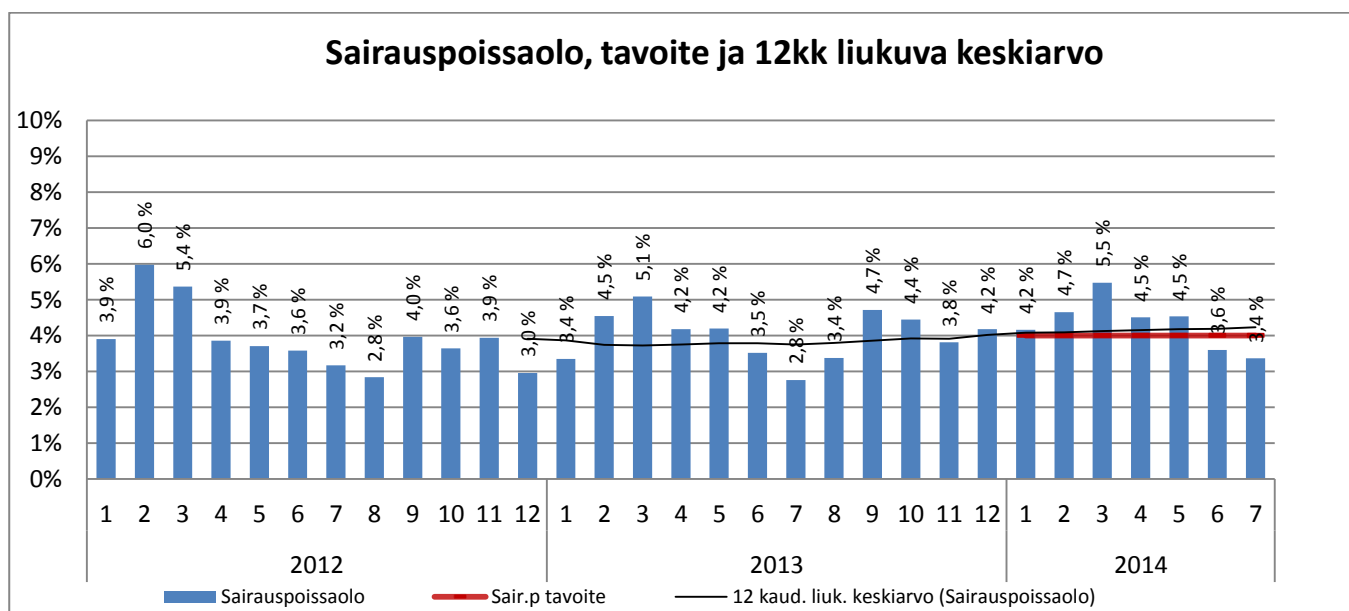
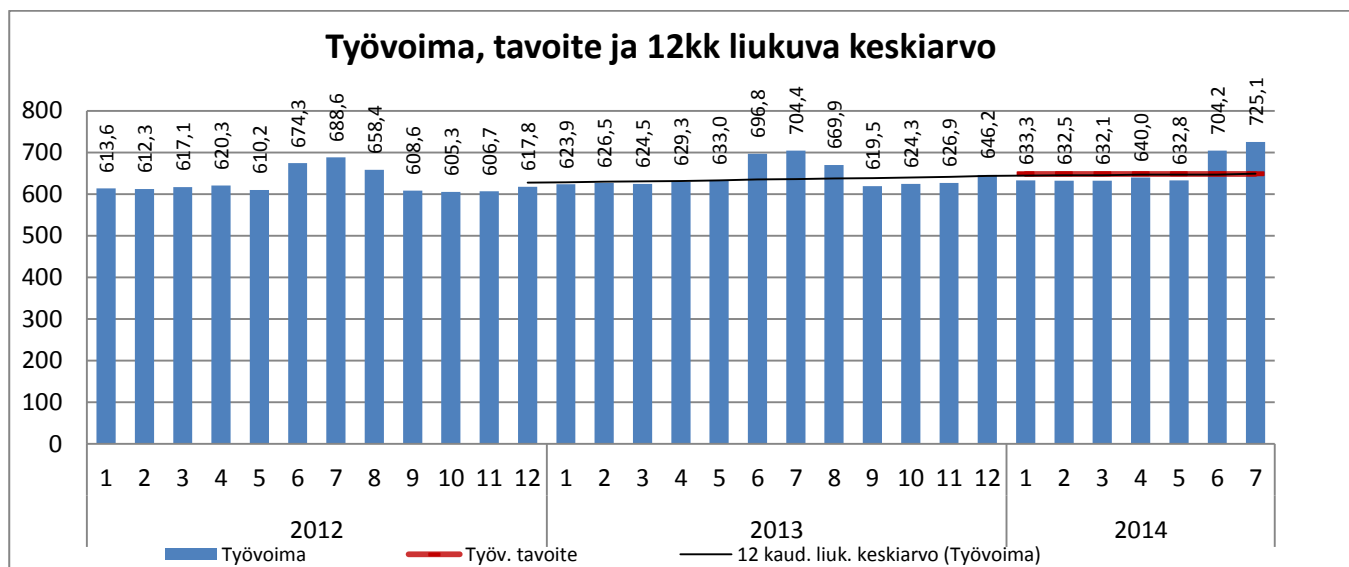
Terveysasemakäynnit ja käynnin korvaavat puhelut kuukausittain



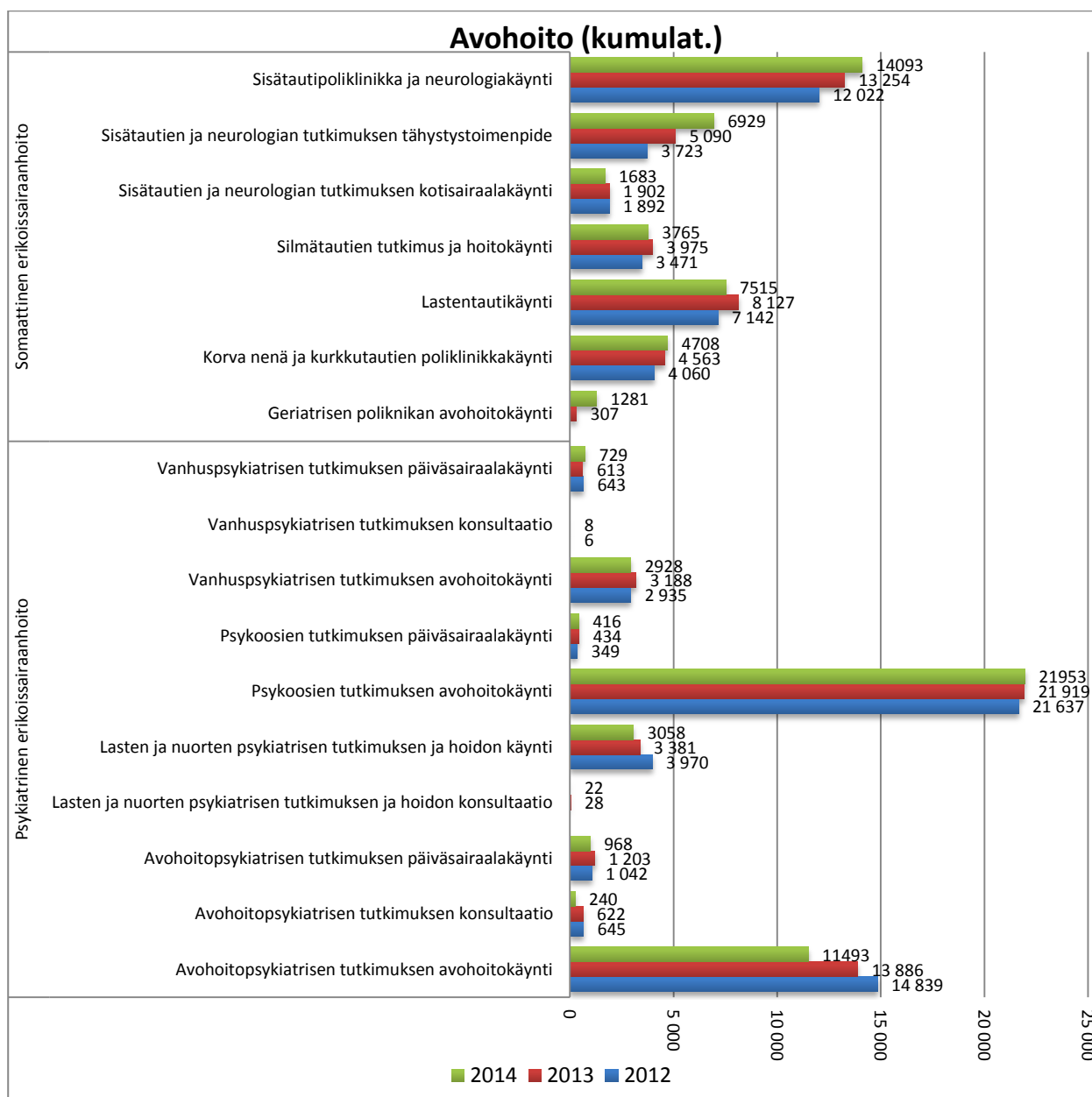
Suun terveydenhuolto



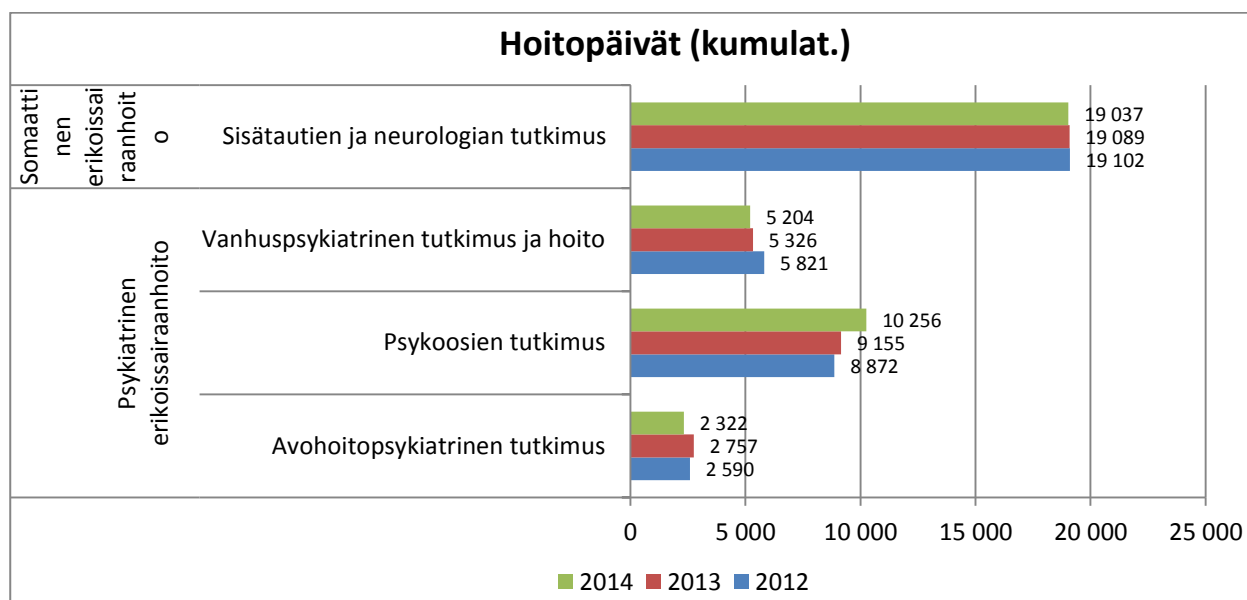
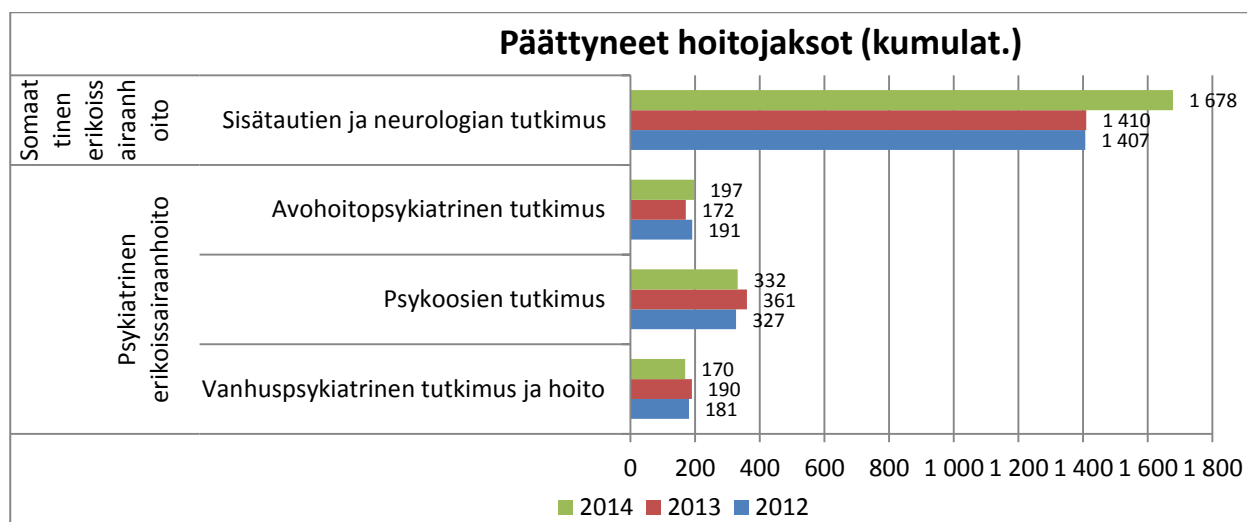
ERIKOISSAIRAANHOITO



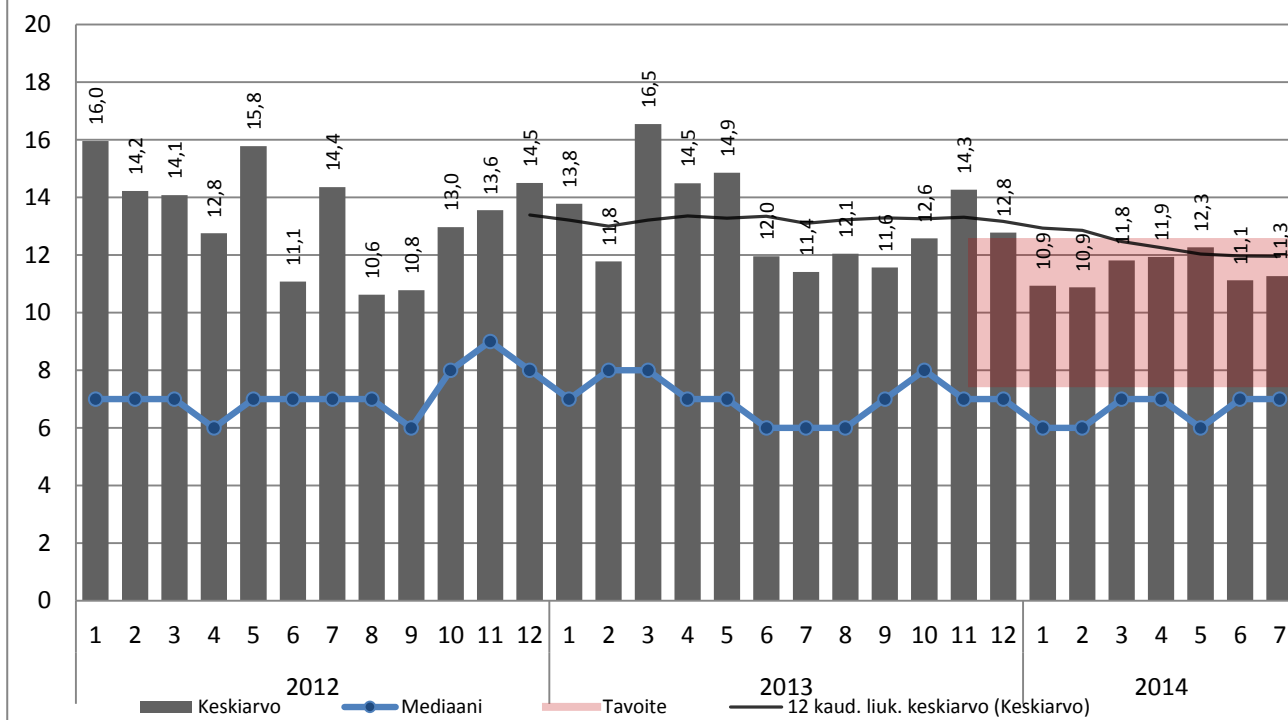
Oma toiminta: Avohoito



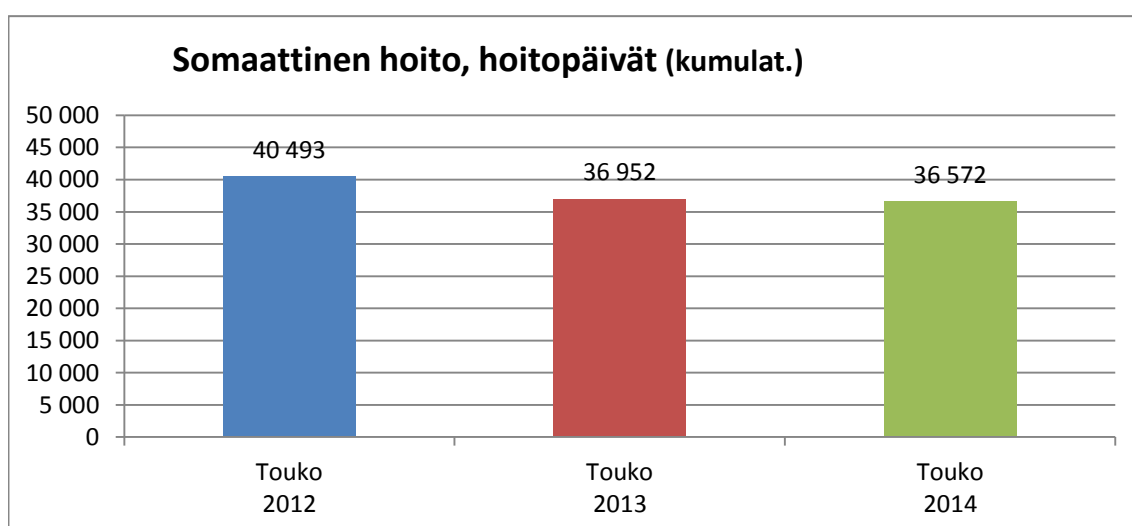
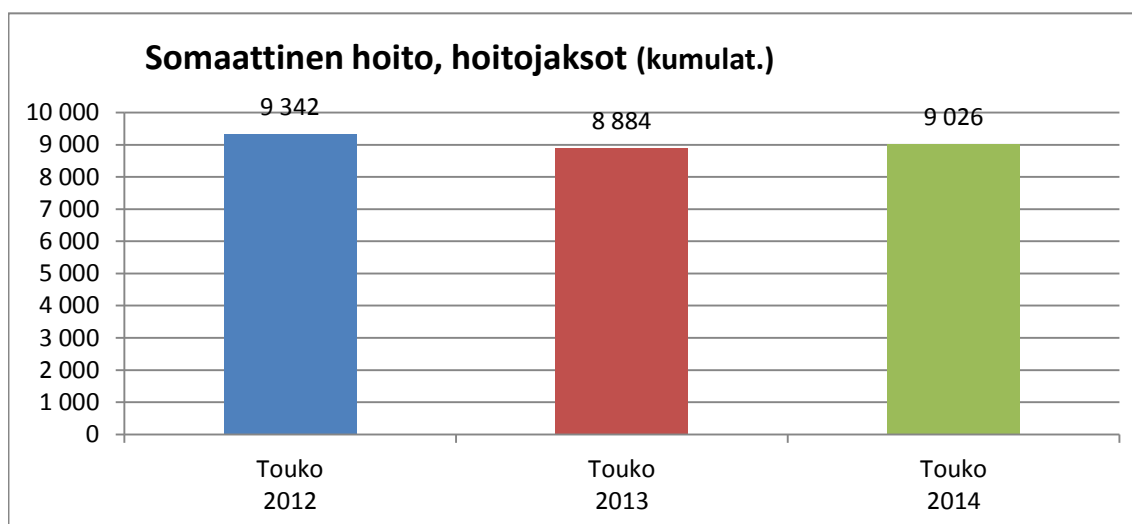
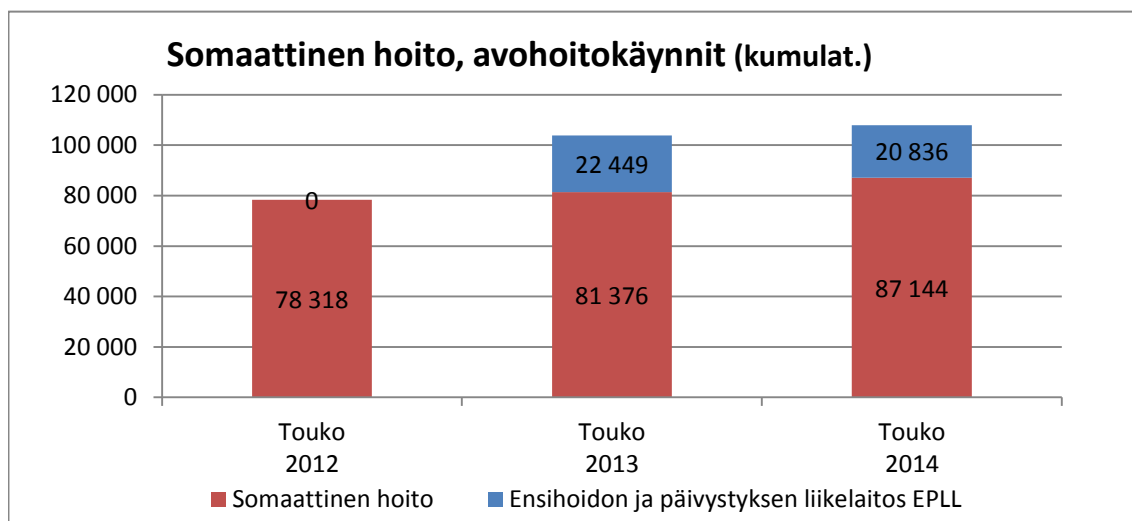
Oma toiminta: Sairaalahoito

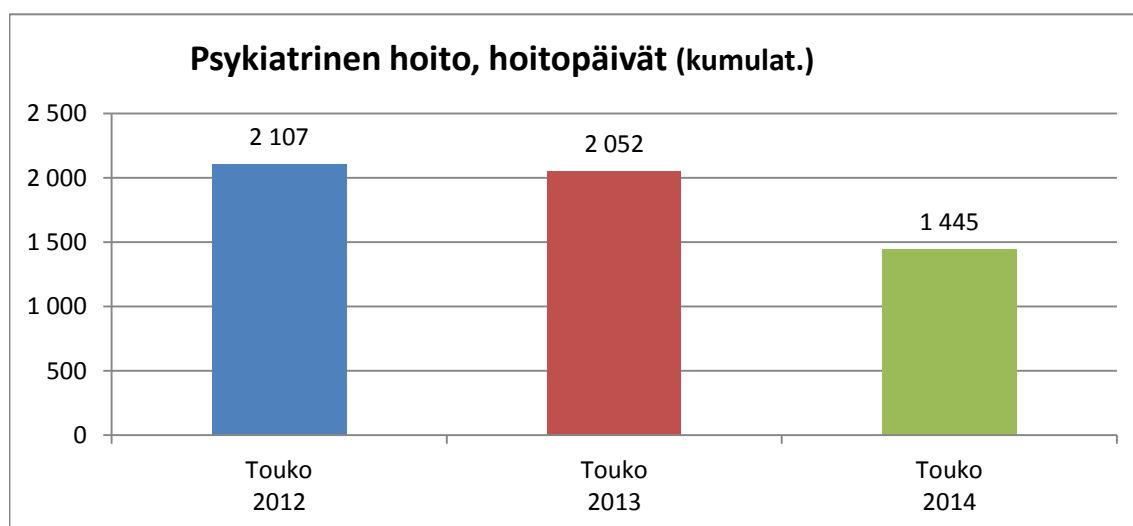
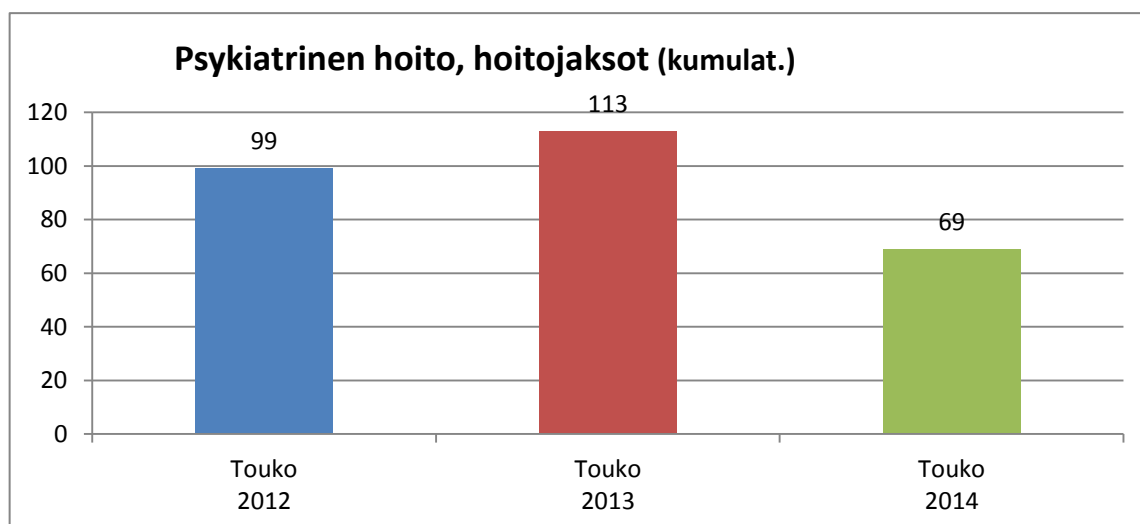
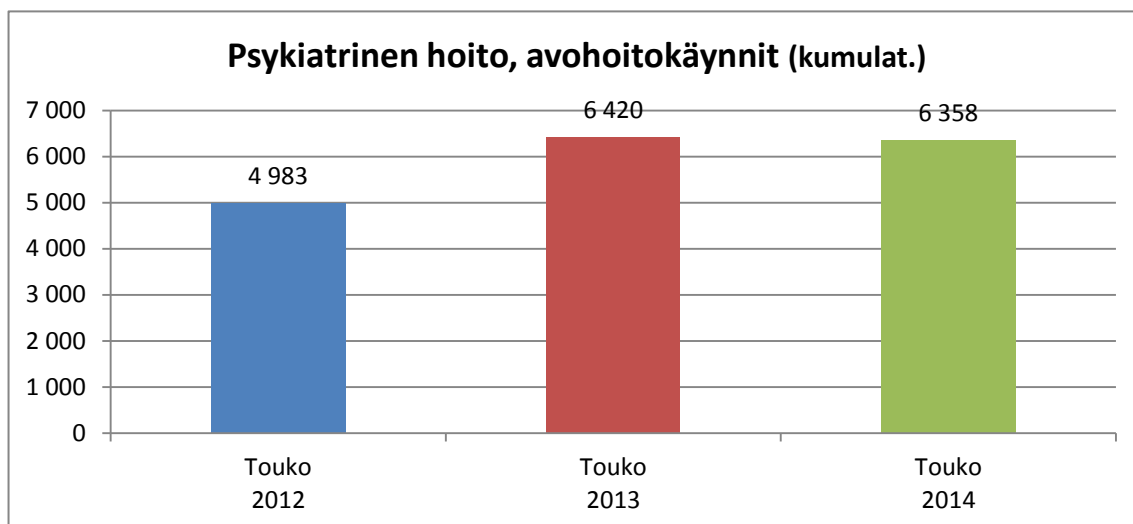


Oman esh:n som. hoitajaksojen pituus, tavoite 2014: 8-12 vrk

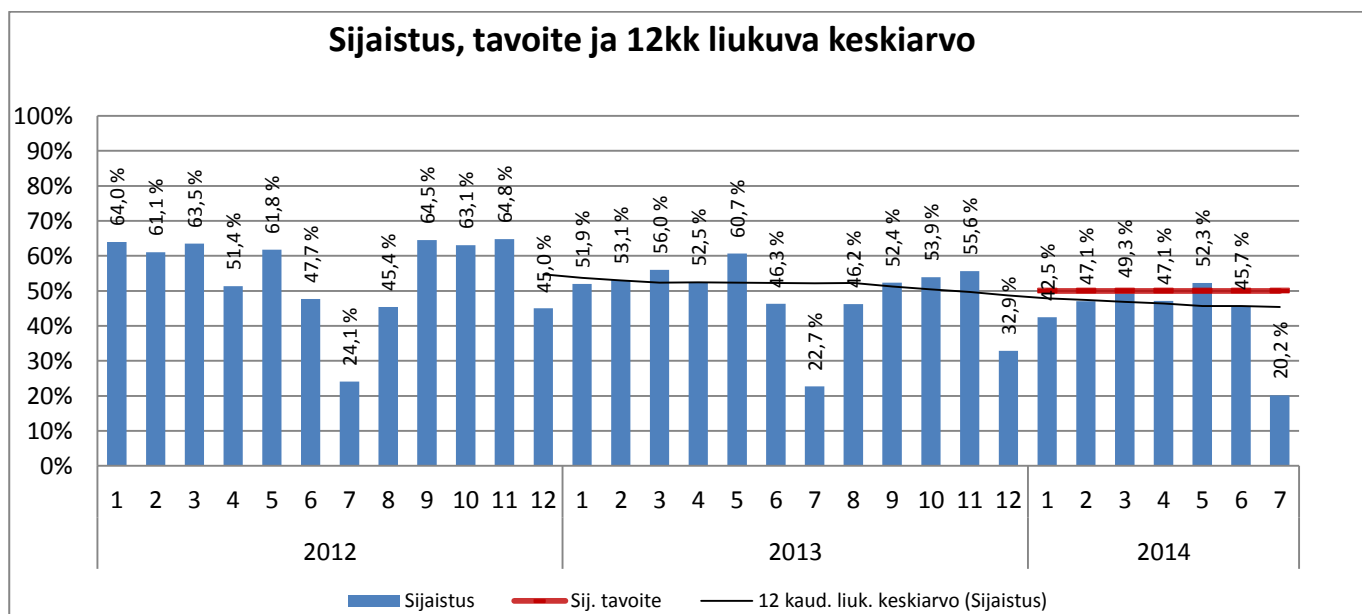
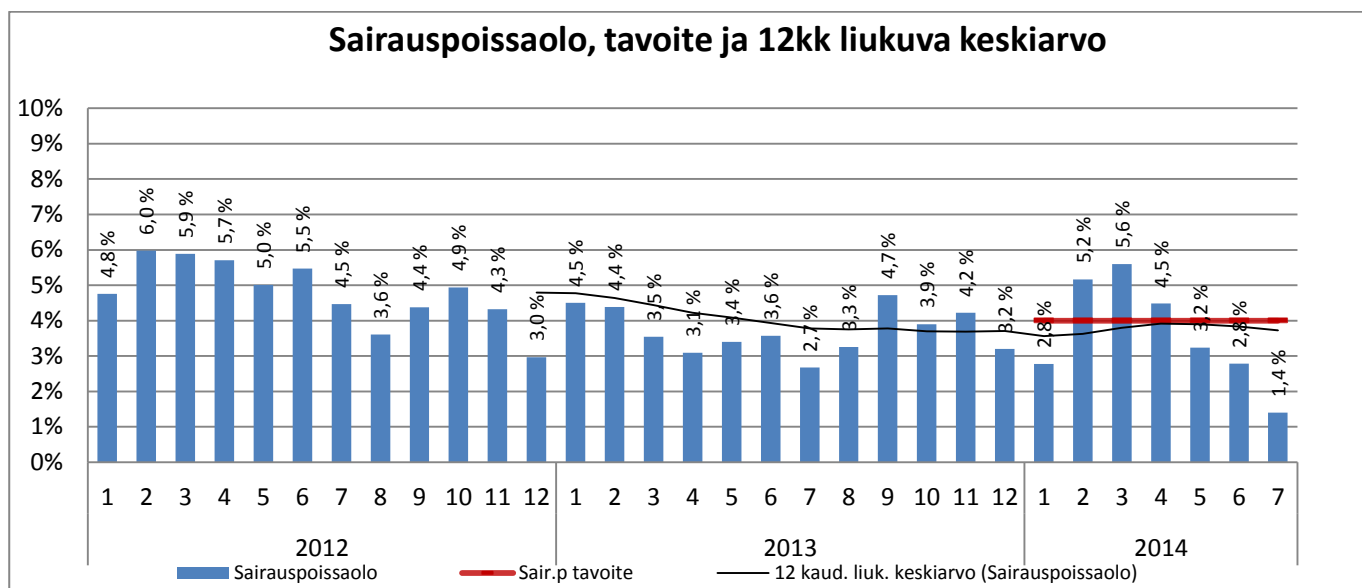
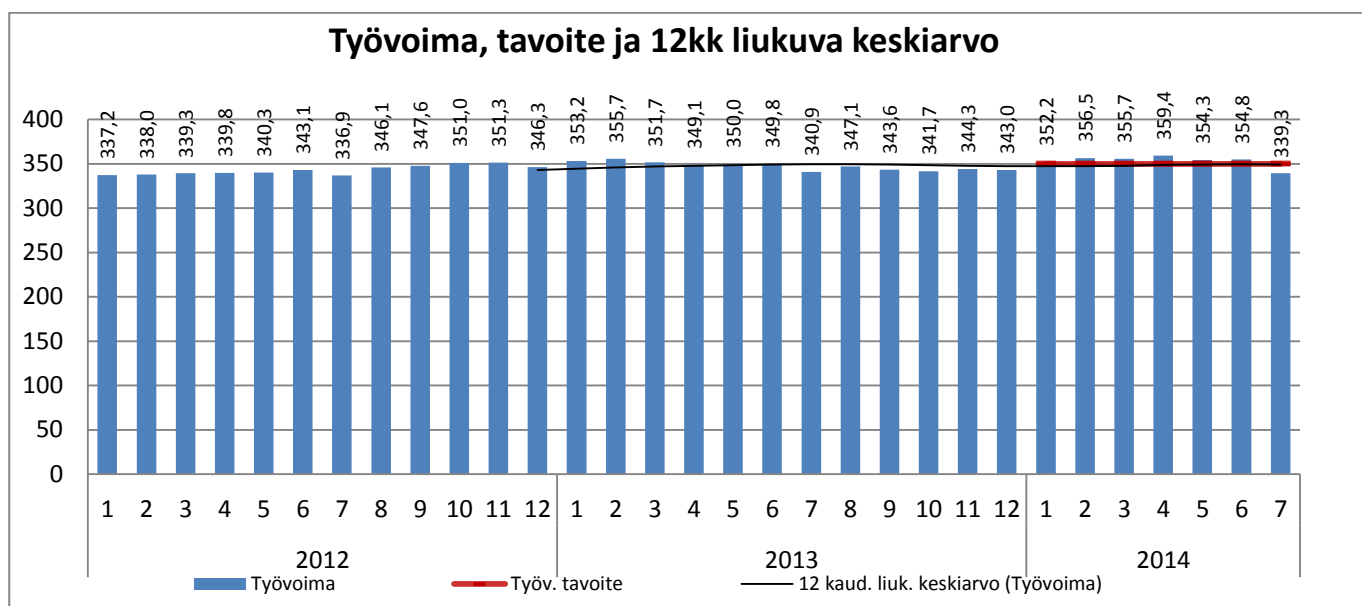


Sairaanhoitopiiri



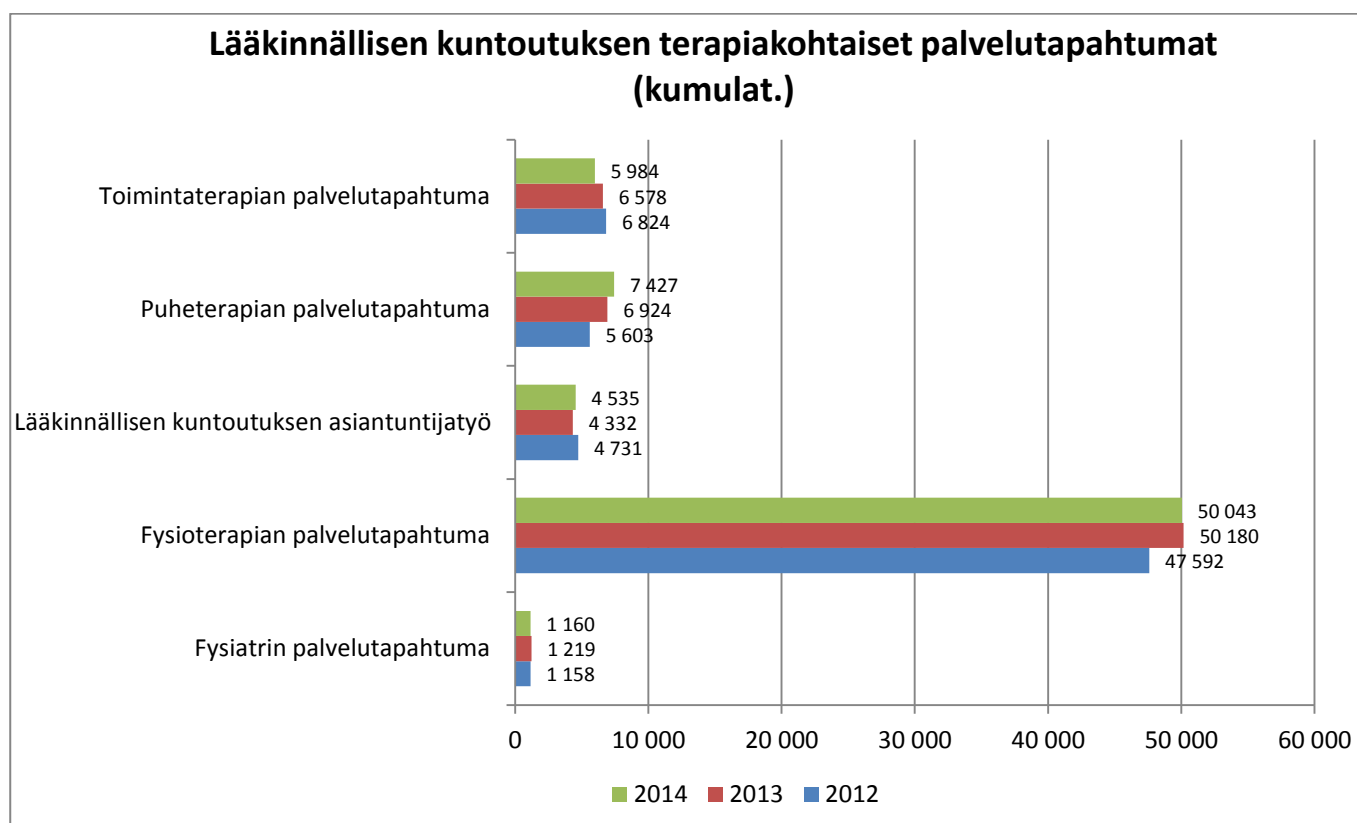
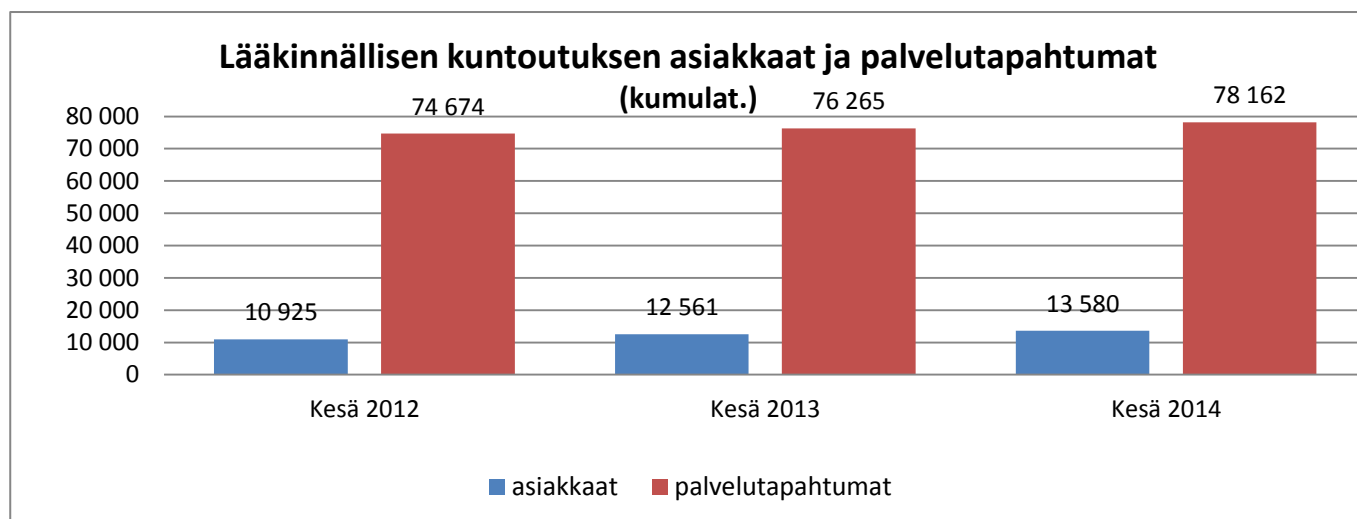


KUNTOUTUMISPALVELUT

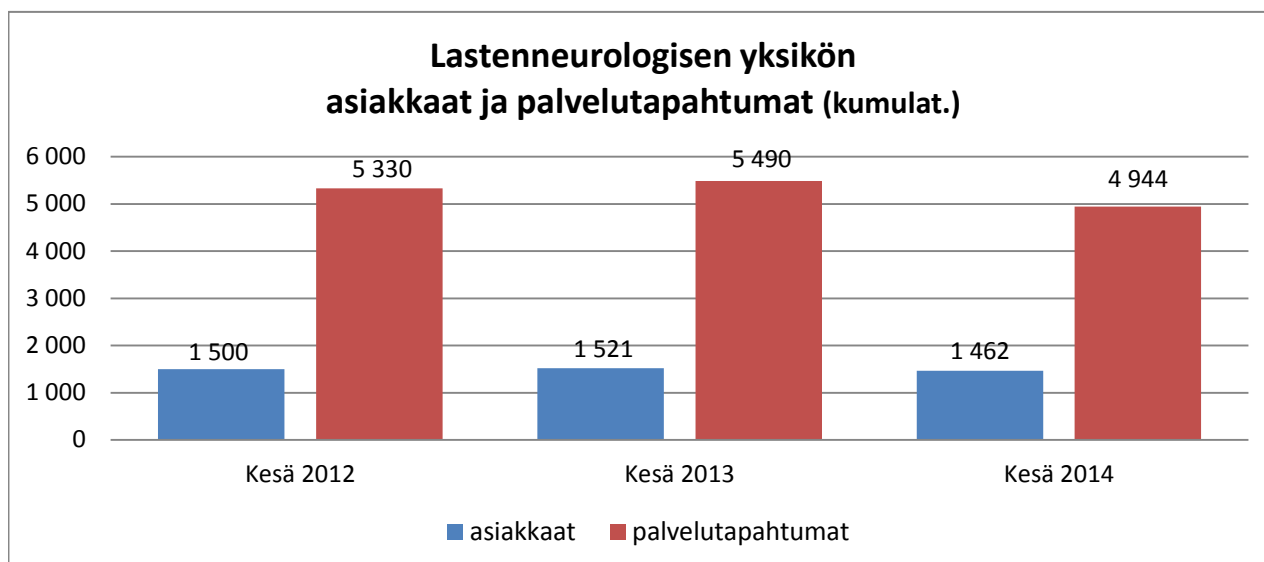


Kumulat. tarkoittaa asiakastapahtumien summaa tai eri asiakkaiden määrää vuoden alusta raportointikuukauden loppuun (tammi-kesäkuu).

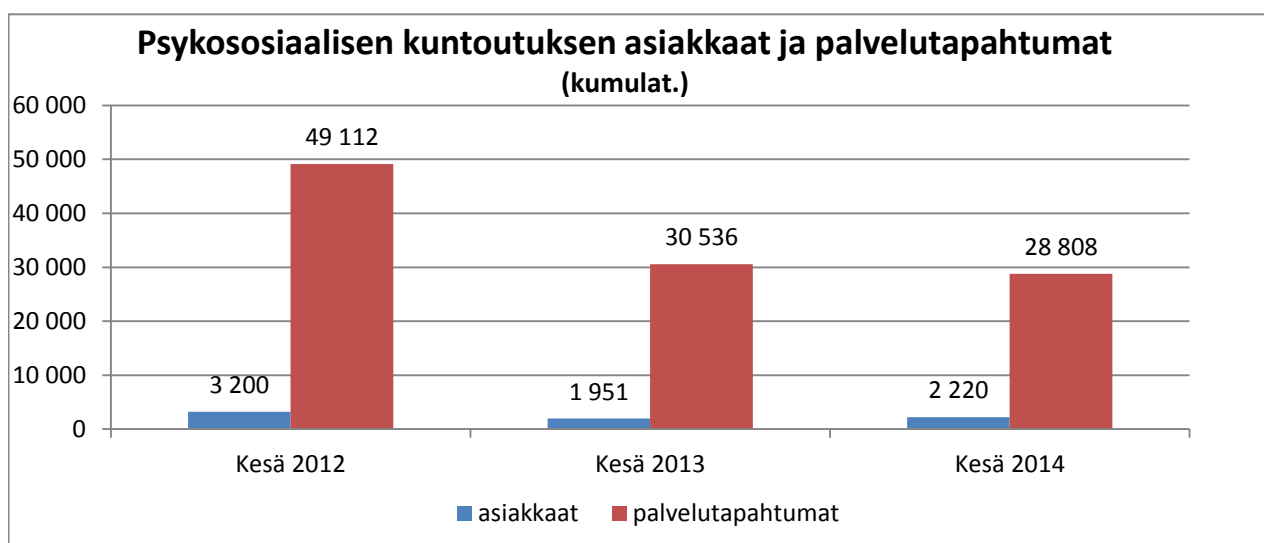
Lääkinnällinen kuntoutus



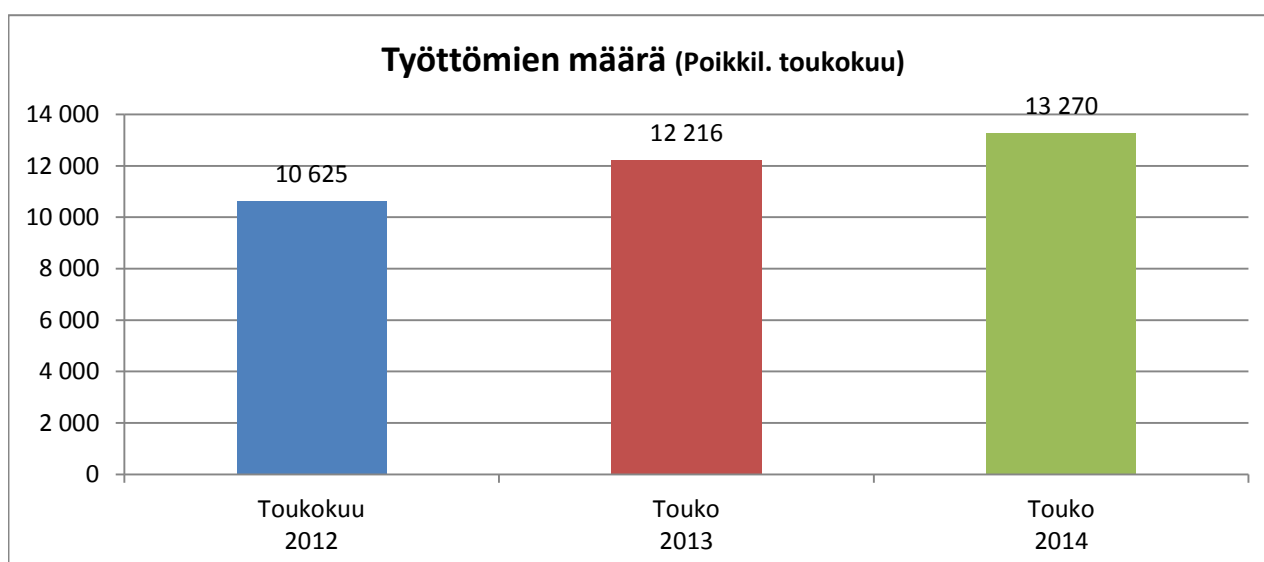
Lastenneurologinen yksikkö

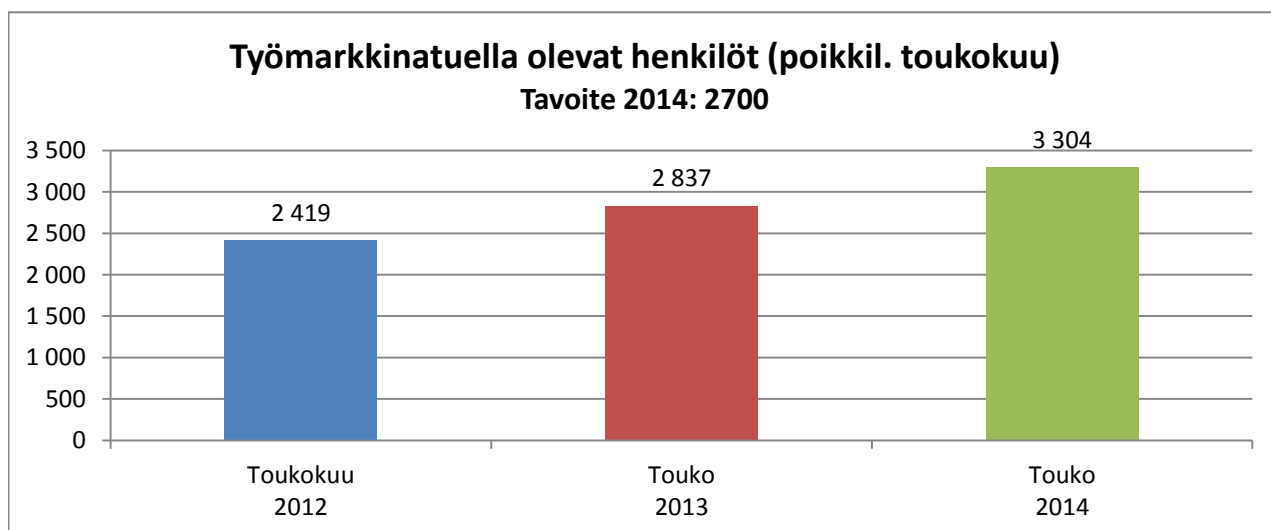
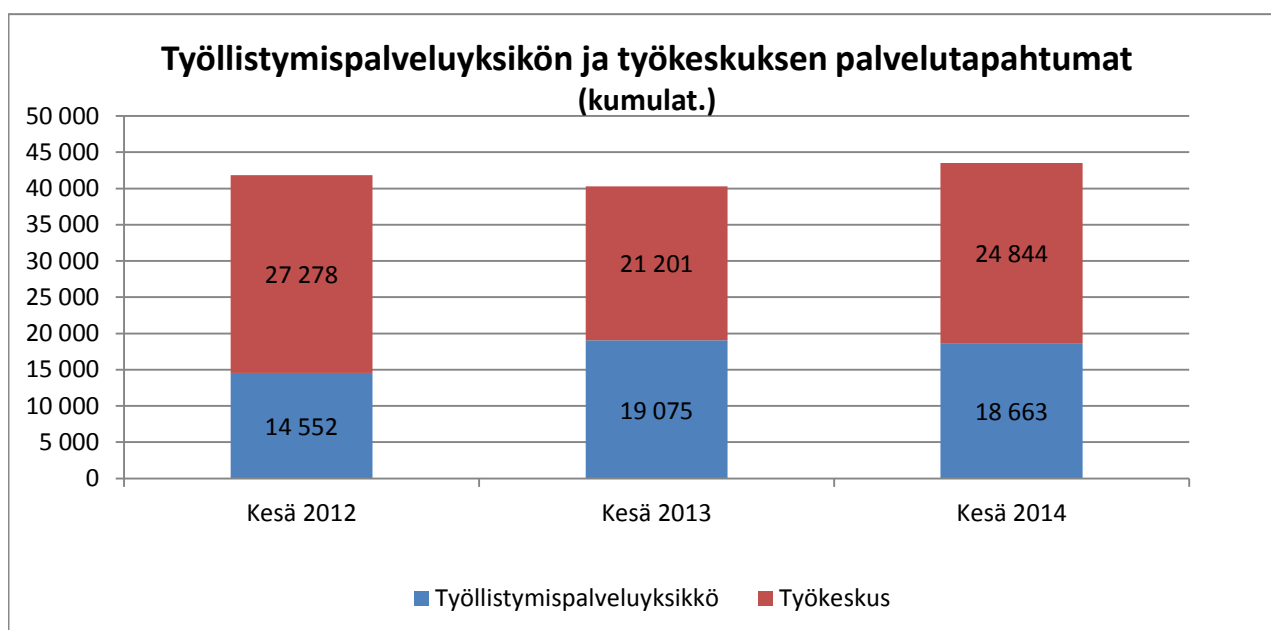
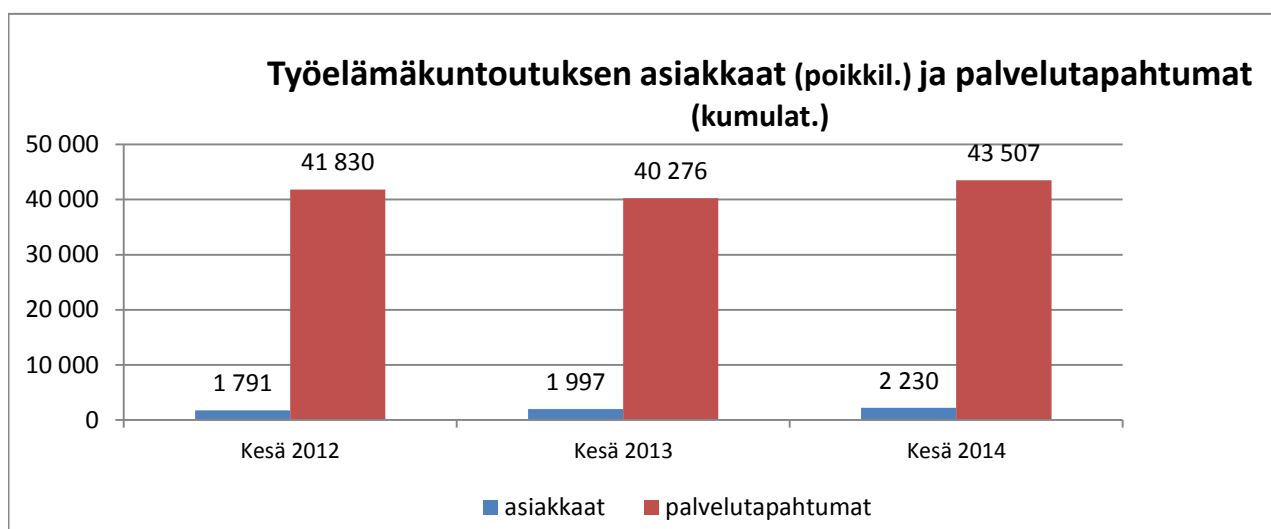


Psykososiaalinen kuntoutus

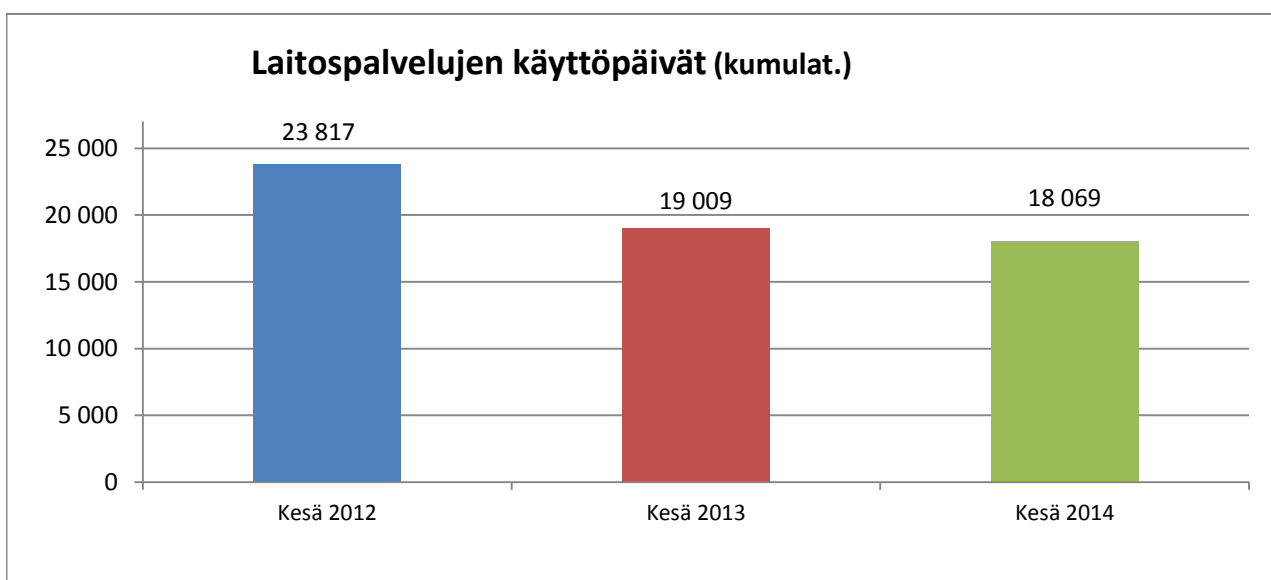
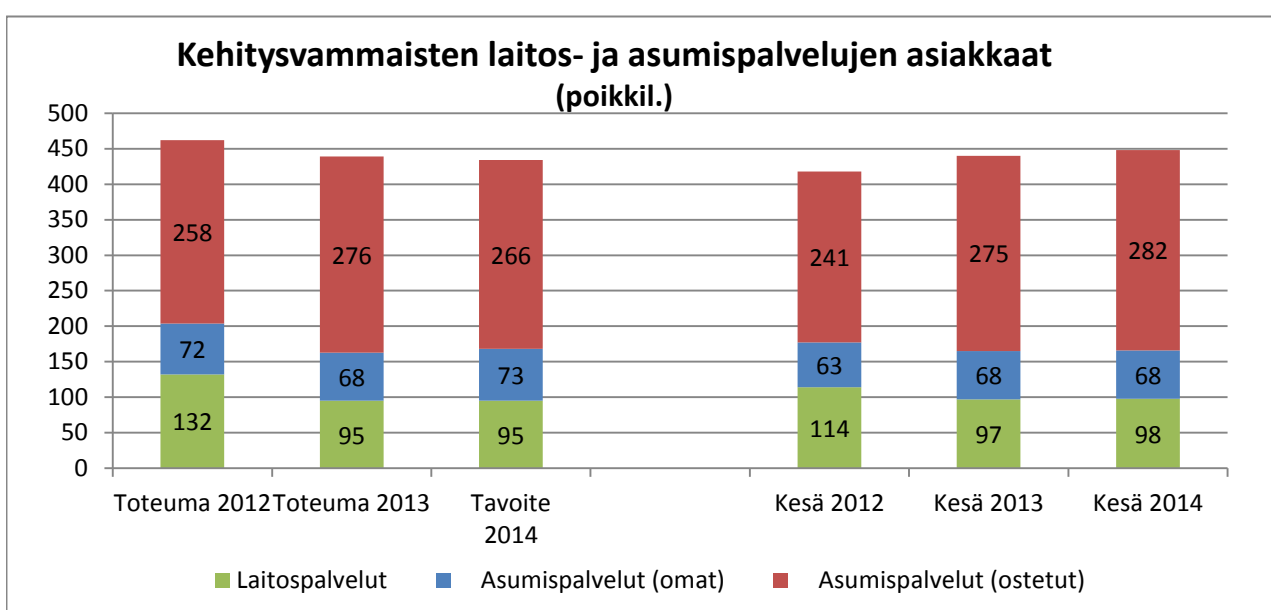
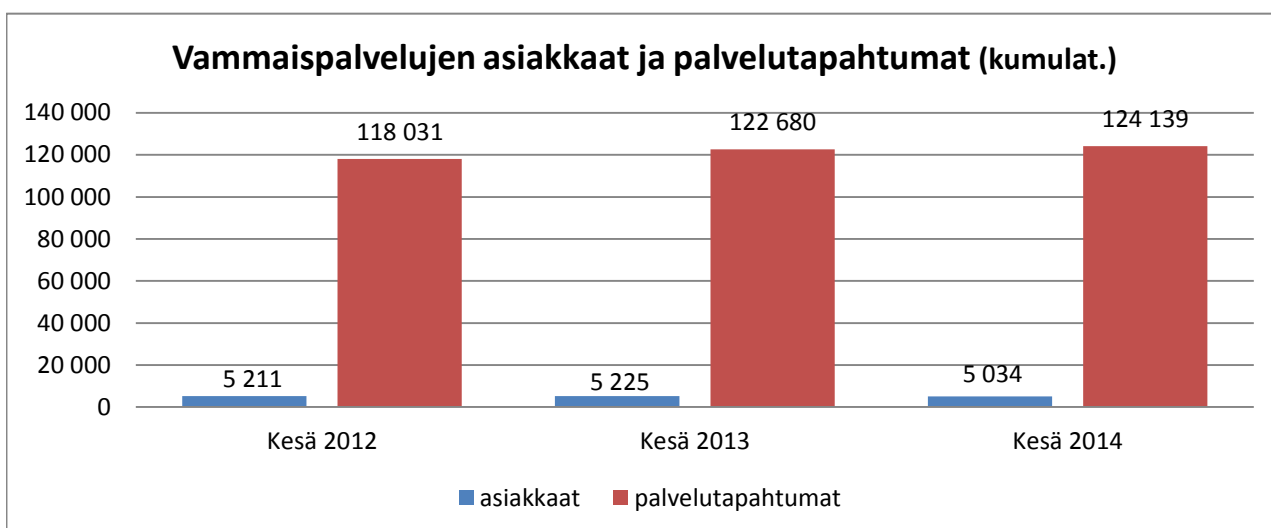


Työelämäkuntoutus

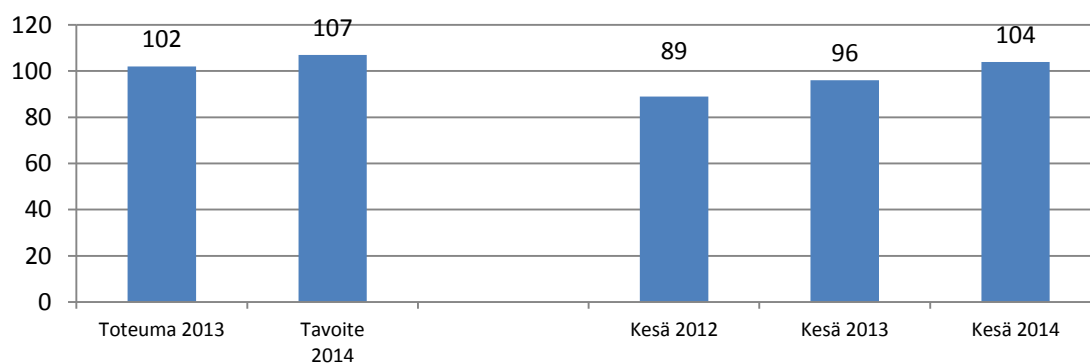




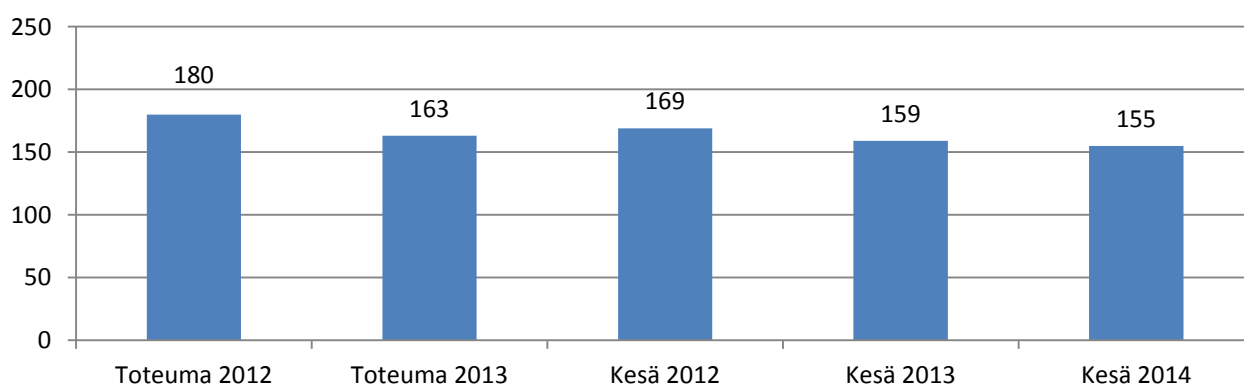
Vammaispalvelut



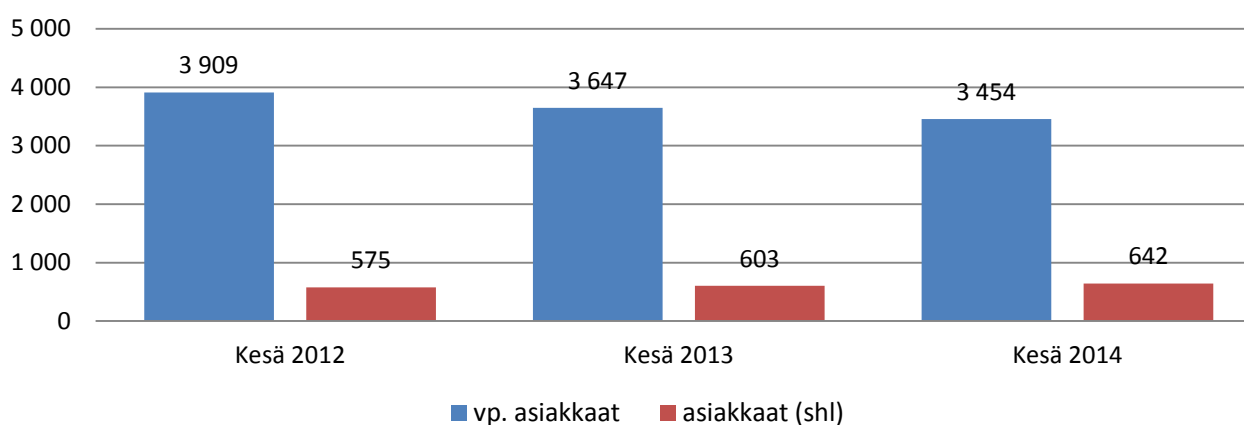
Vaikeavammaisten palveluasumisen asiakkaat (poikkil.)



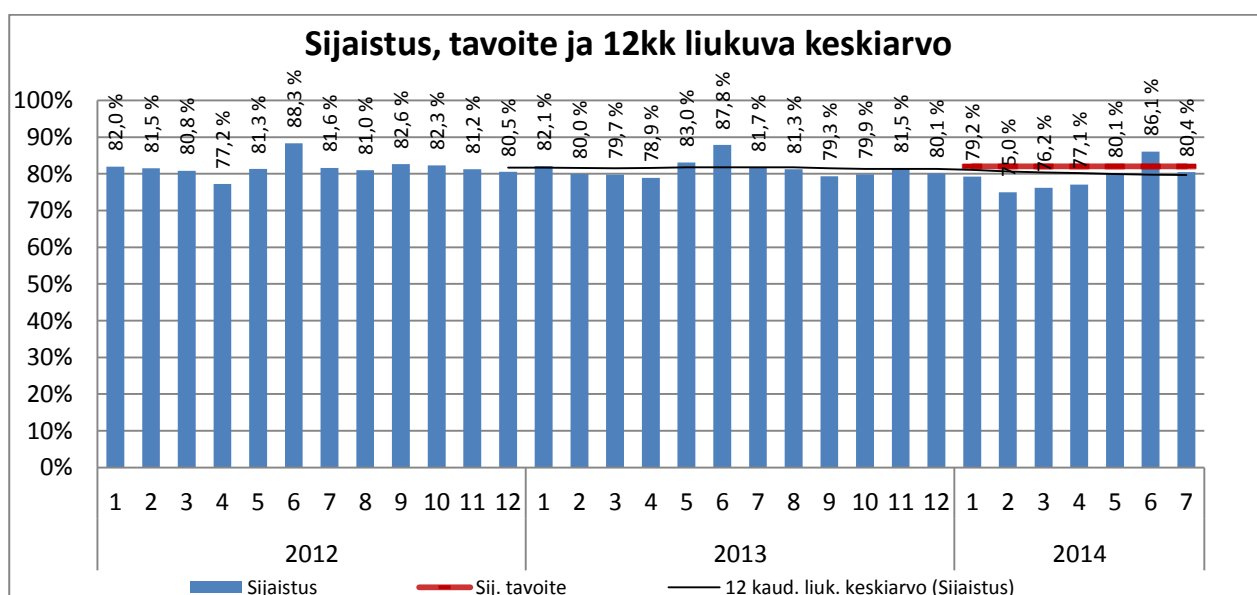
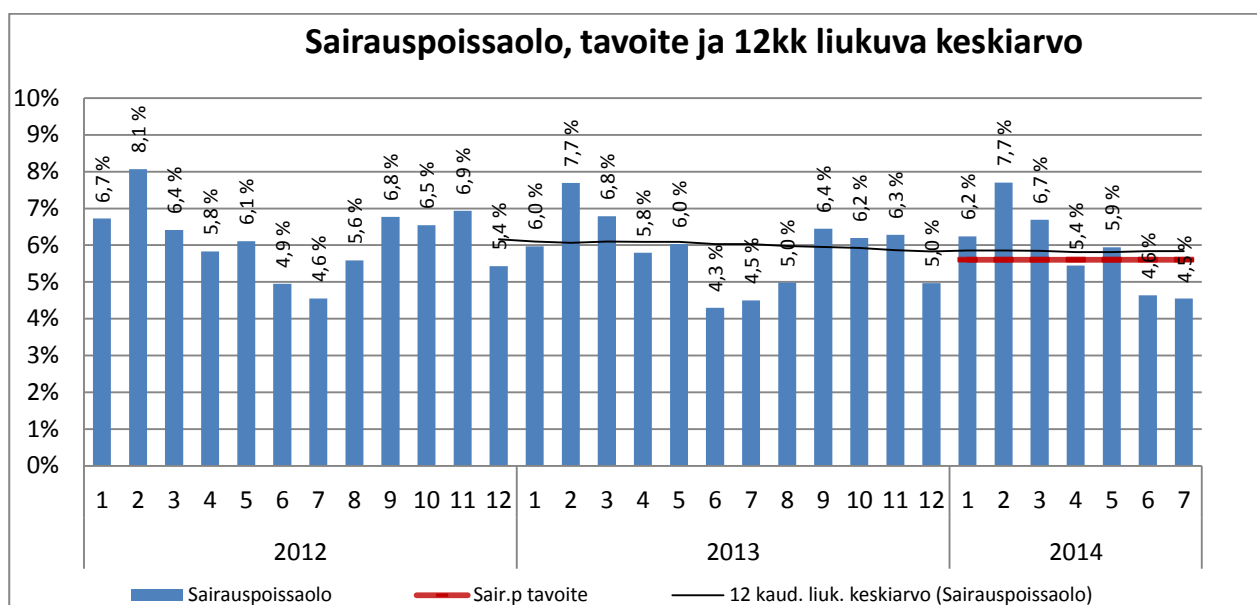
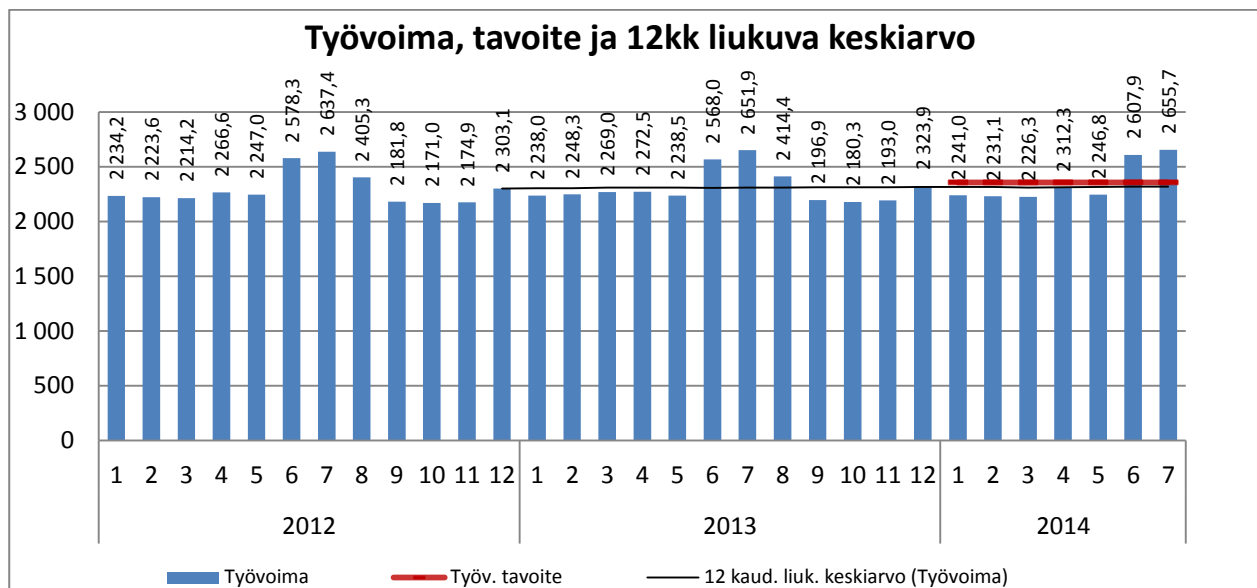
Vammaisten ja pitkäaikaissairaiden lasten omaishoidontuen asiakkaat (poikkil.)



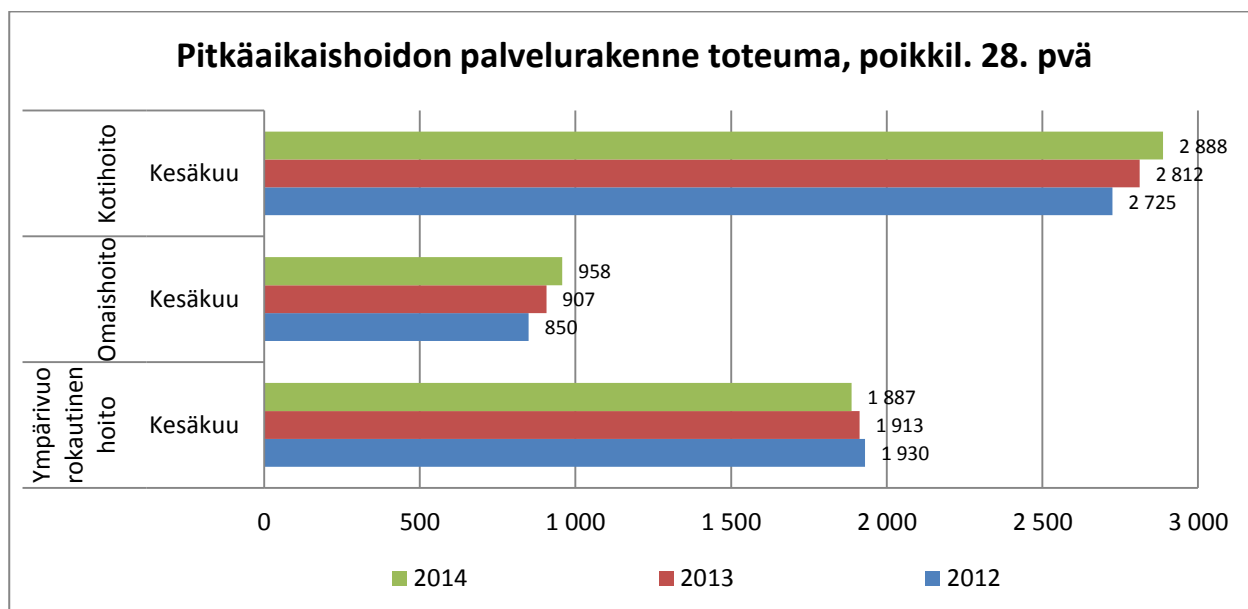
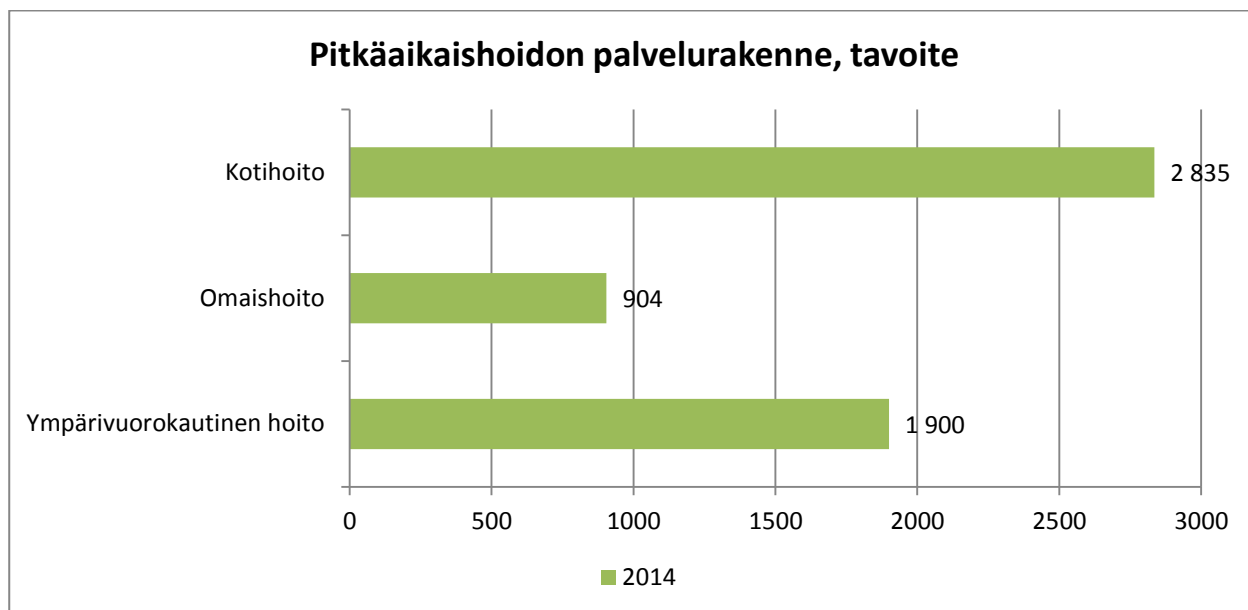
Kuljetuspalvelujen asiakkaat (kumulat.)

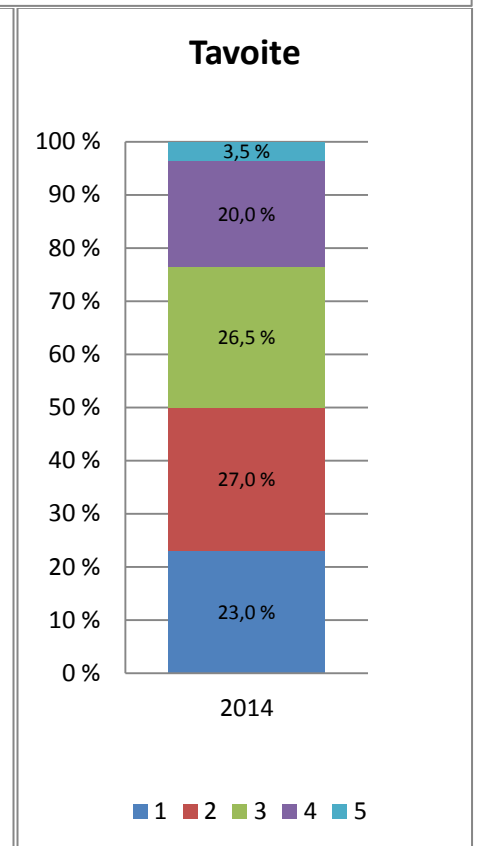
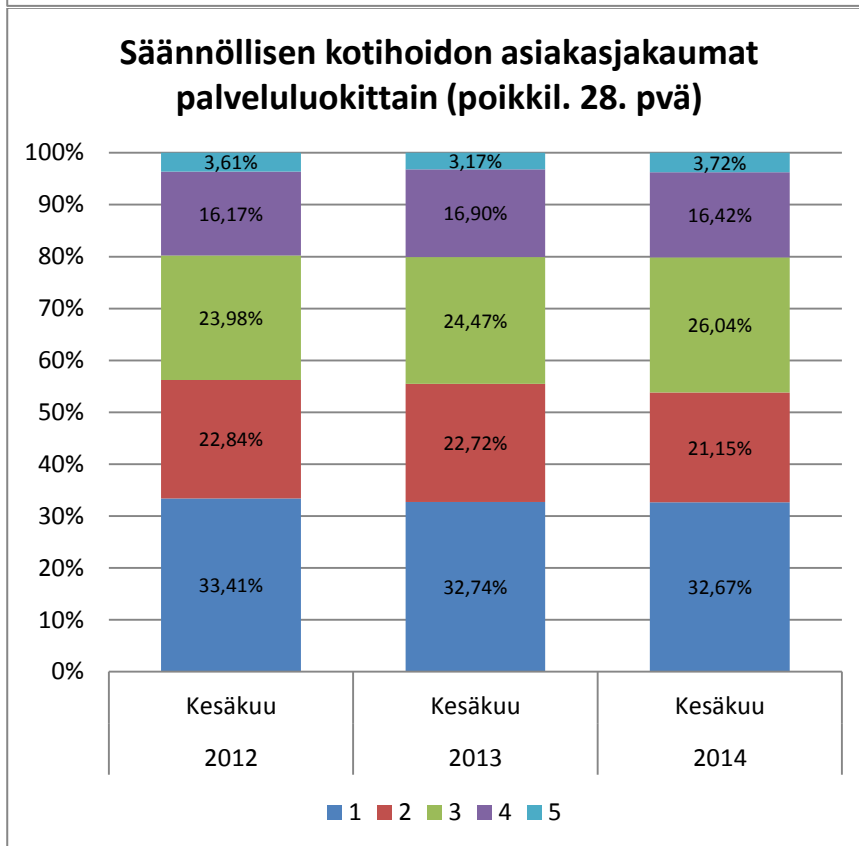
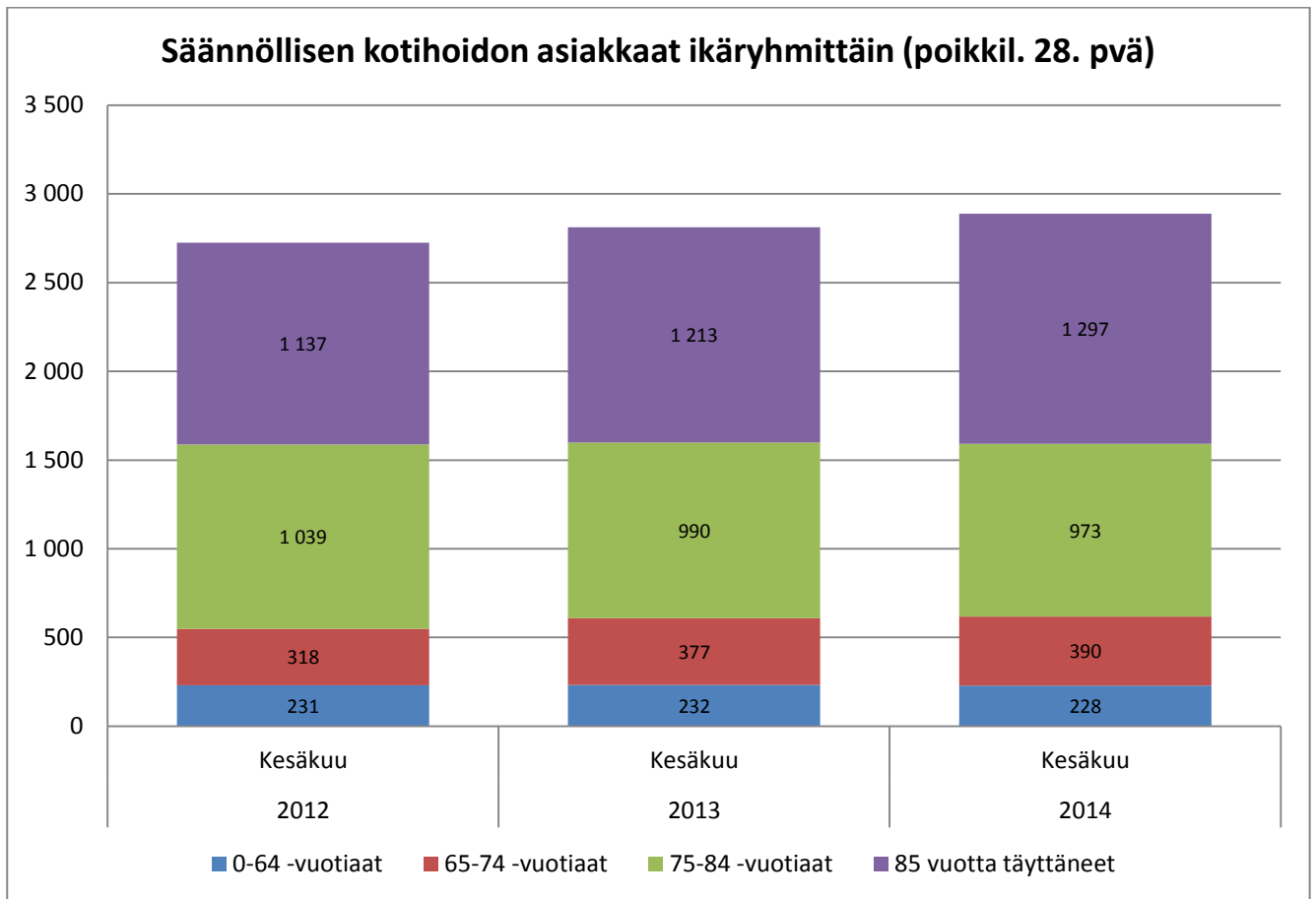


VANHUSPALVELUT

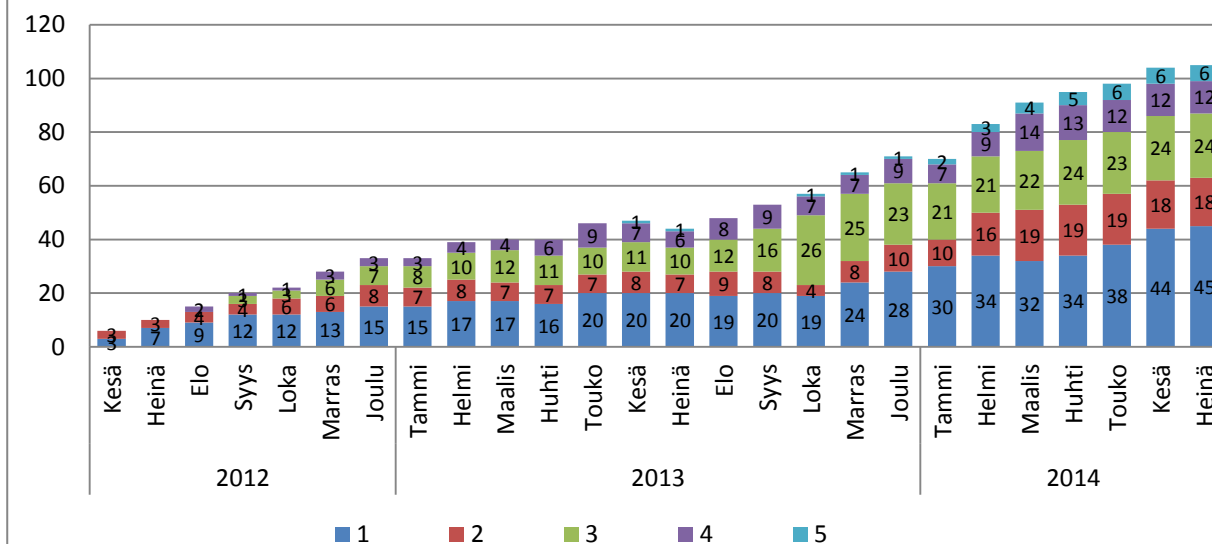


Toiminta

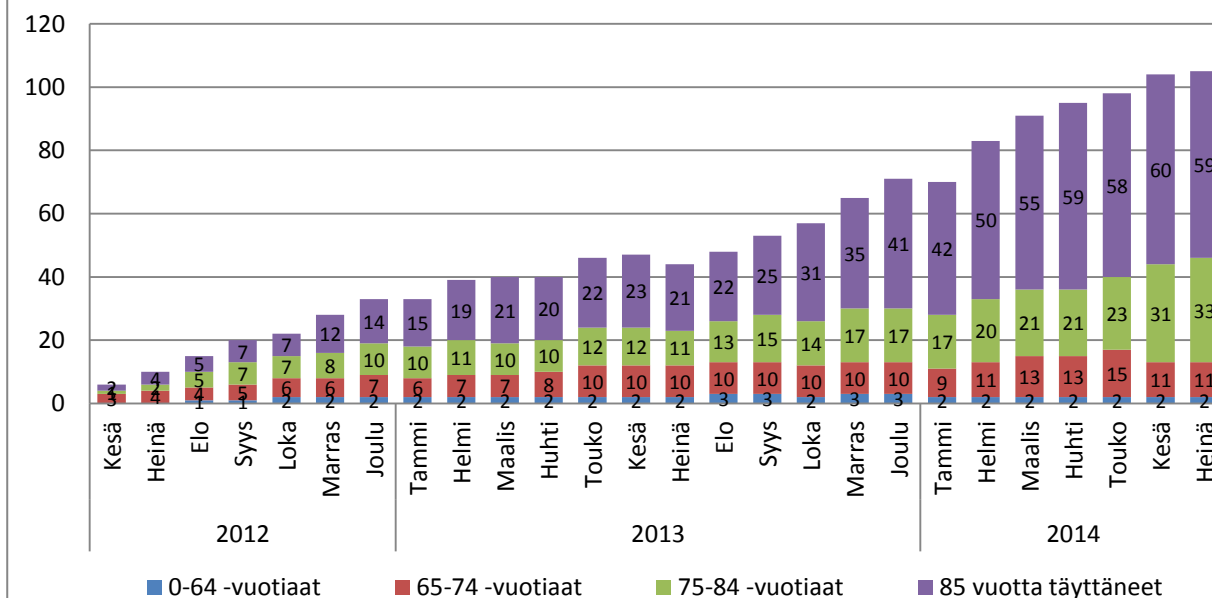


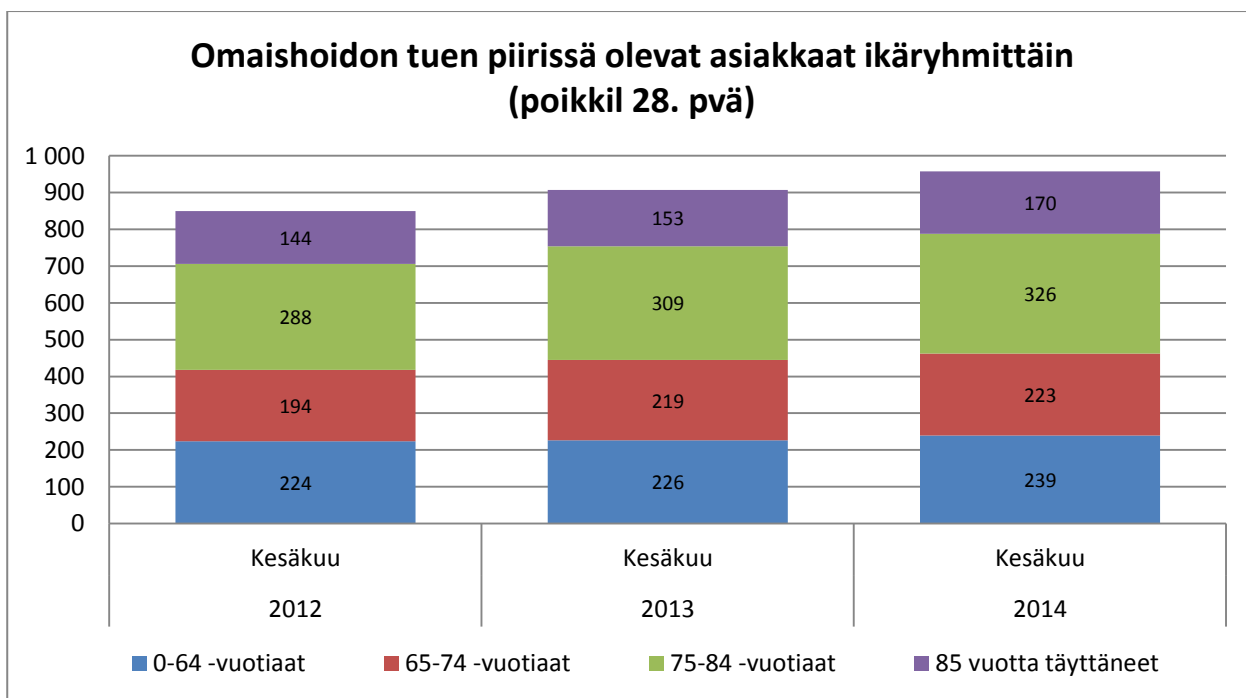
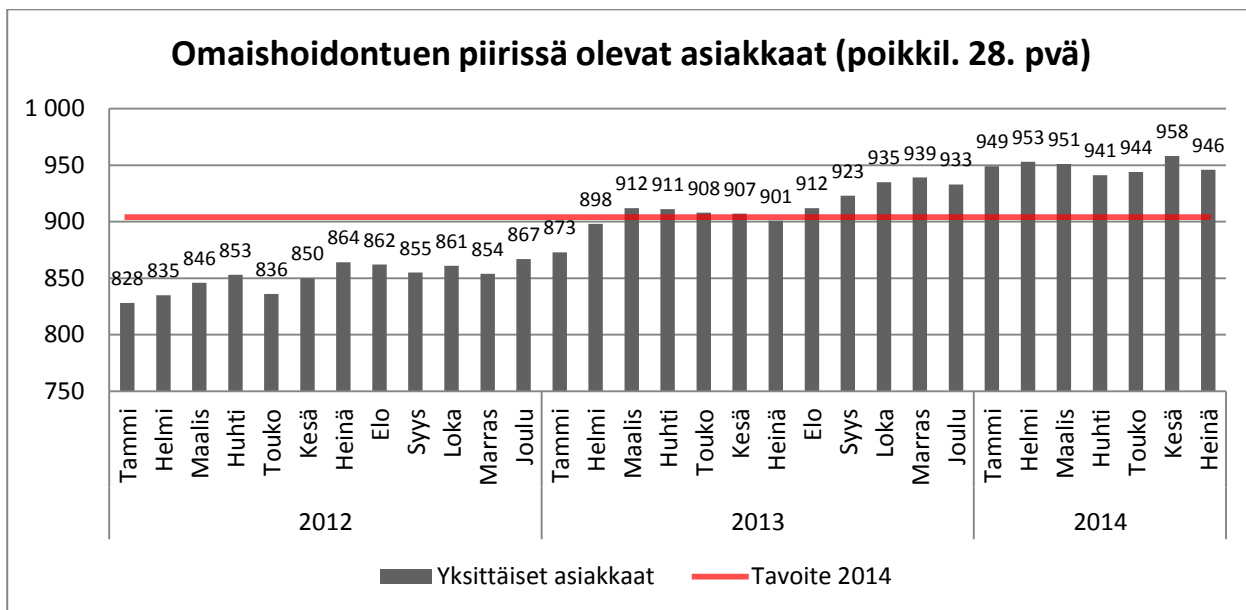


Palveluseteliasiakkaat palveluluokittain (poikkil. 28. pvä)

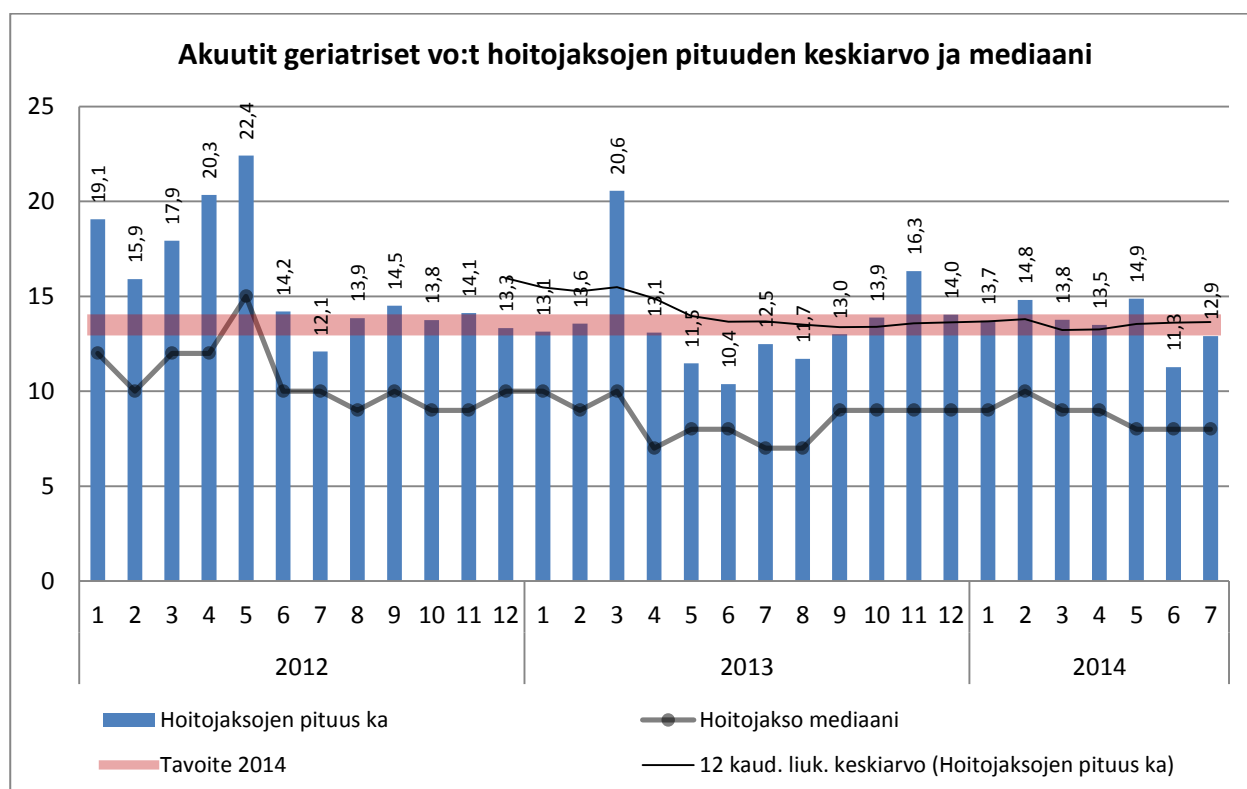
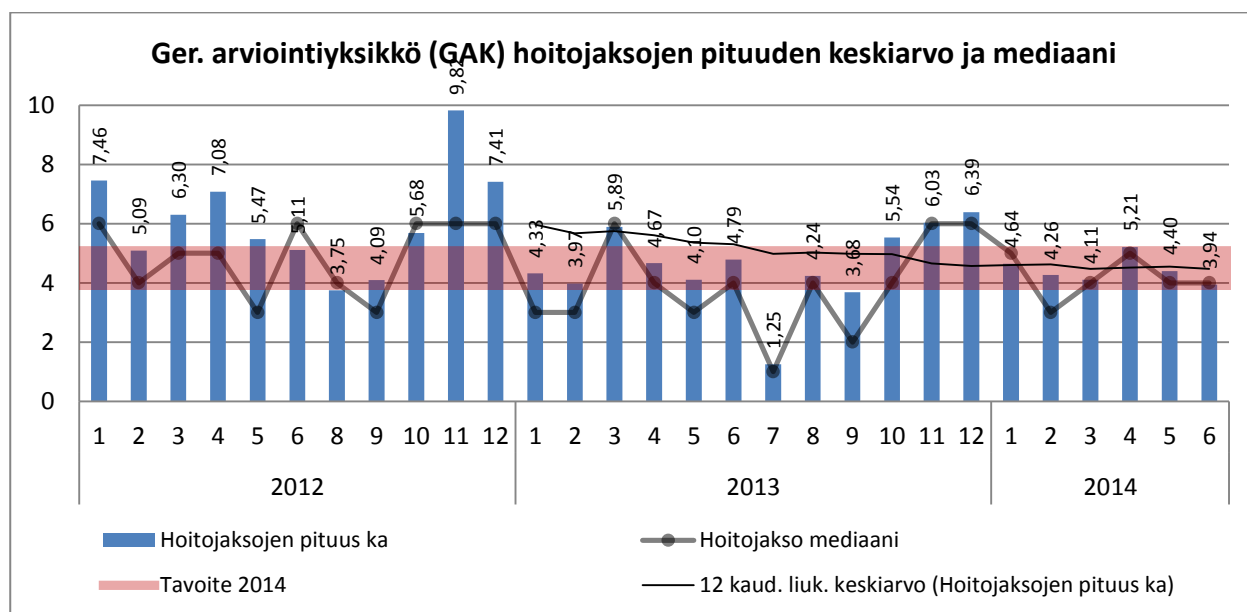


Palveluseteliasiakkaat ikäryhmittäin (poikkil. 28. pvä)



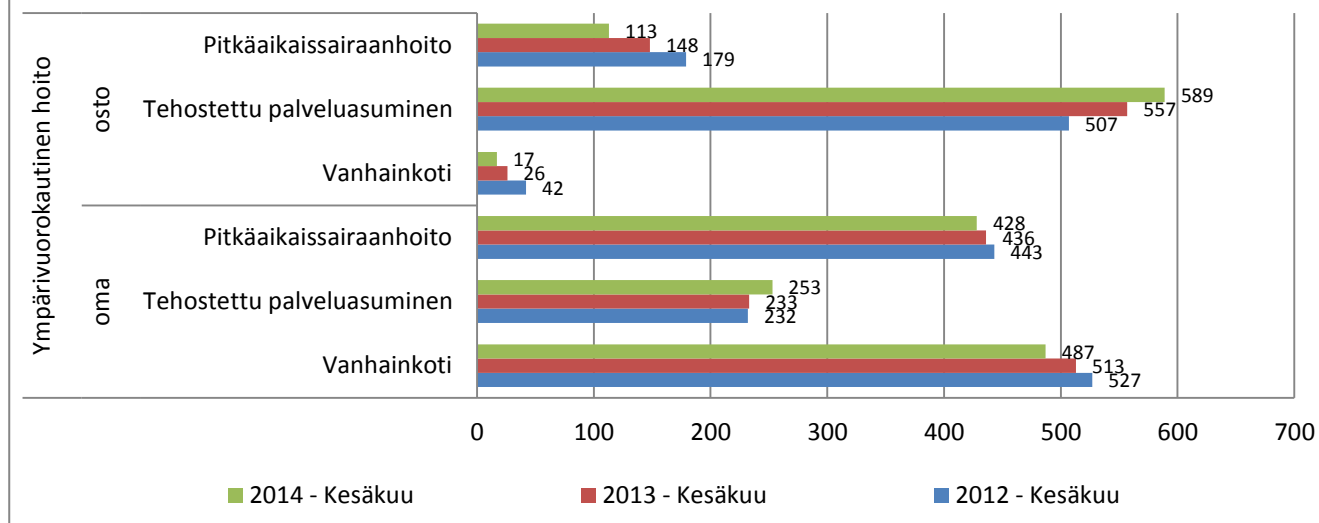


Geriatrinen sairaalahoito

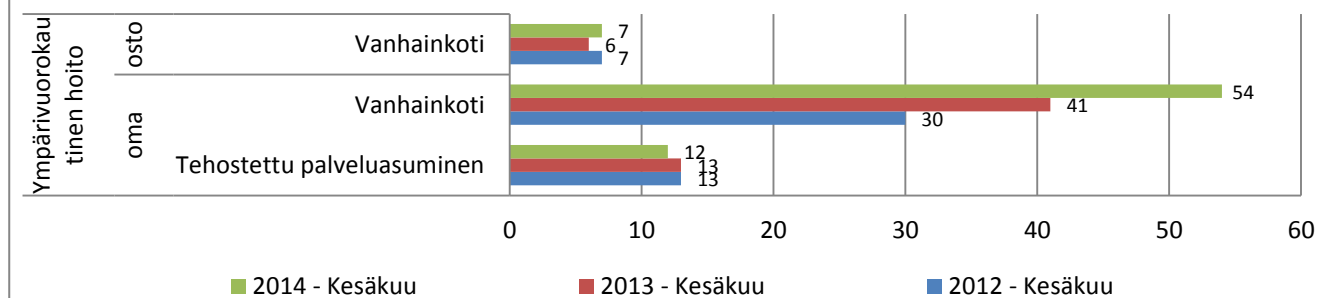


Ympäri vuorokautinen hoito

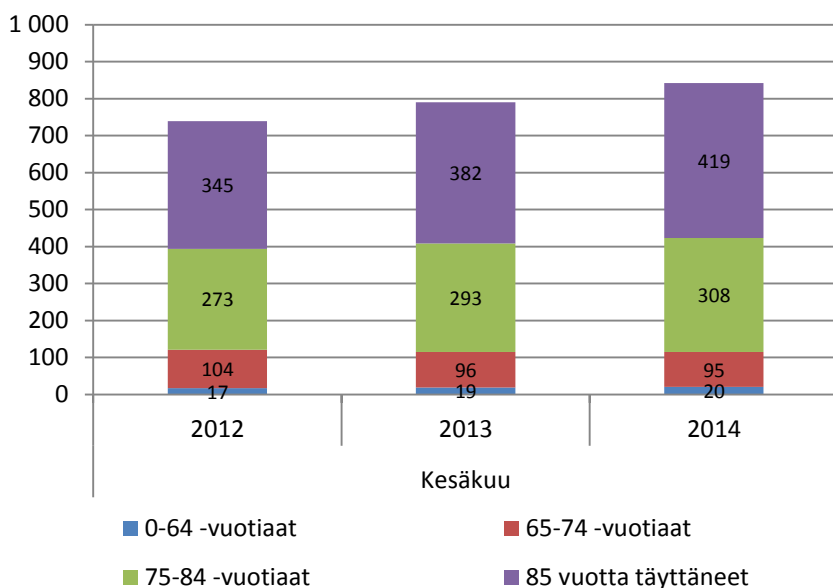
Ympäri vuorokautinen pitkäaikaishoito (poikkil. 28. pvä)



Ympäri vuorokautinen lyhytaikaishoito (poikkil. 28. pvä)



Tehostetun palveluasumisen asukkaat (poikkil. 28. pvä)



Tavoite: 843

