

TURKU



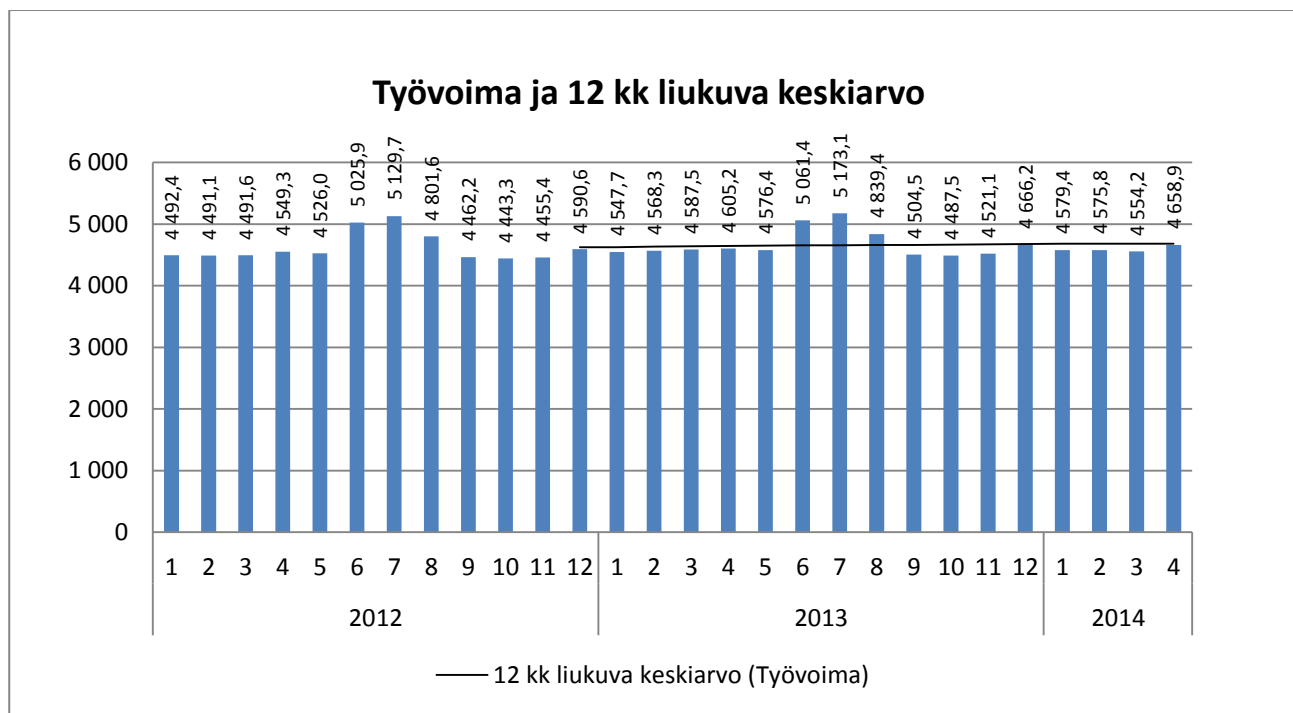
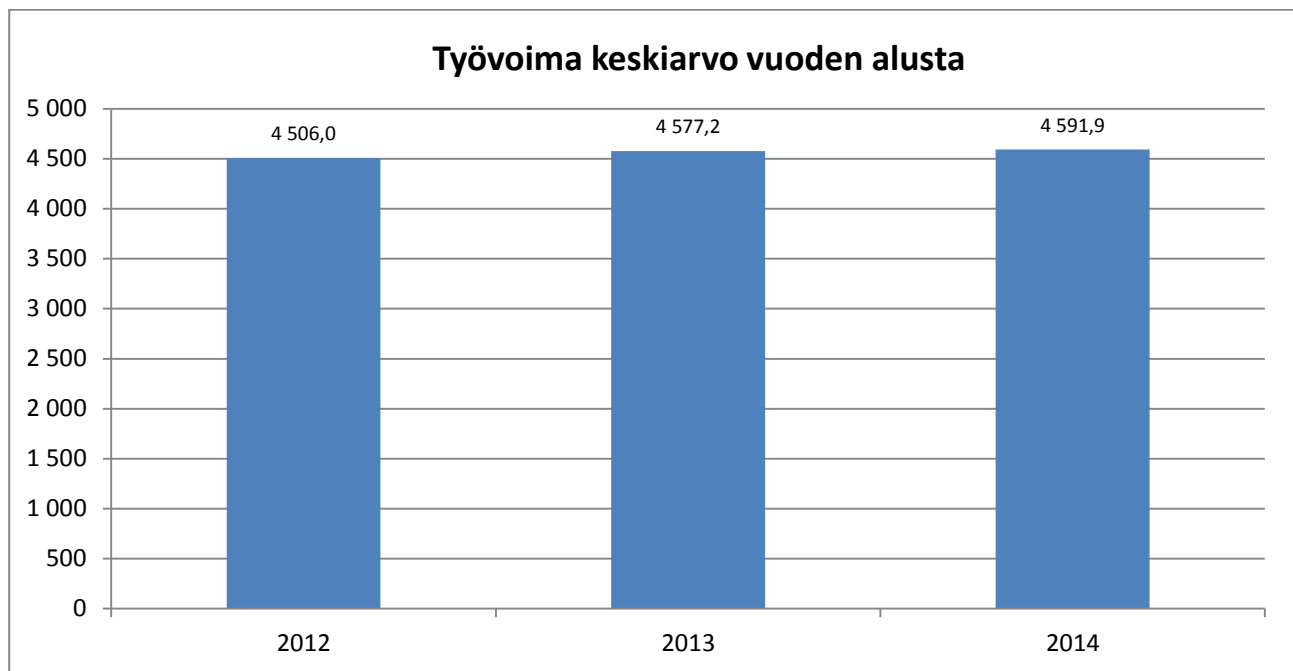
HYVINVOINTITOIMIALA

Kuukausiseuranta

Huhtikuu

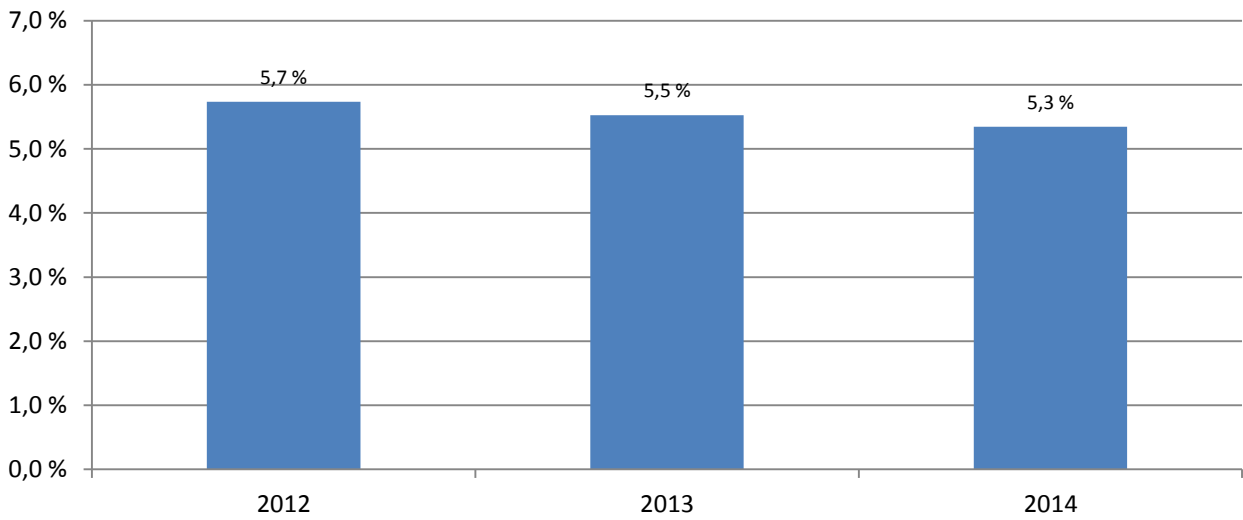
13.5.2014

HYVINVOINTITOIMIALA

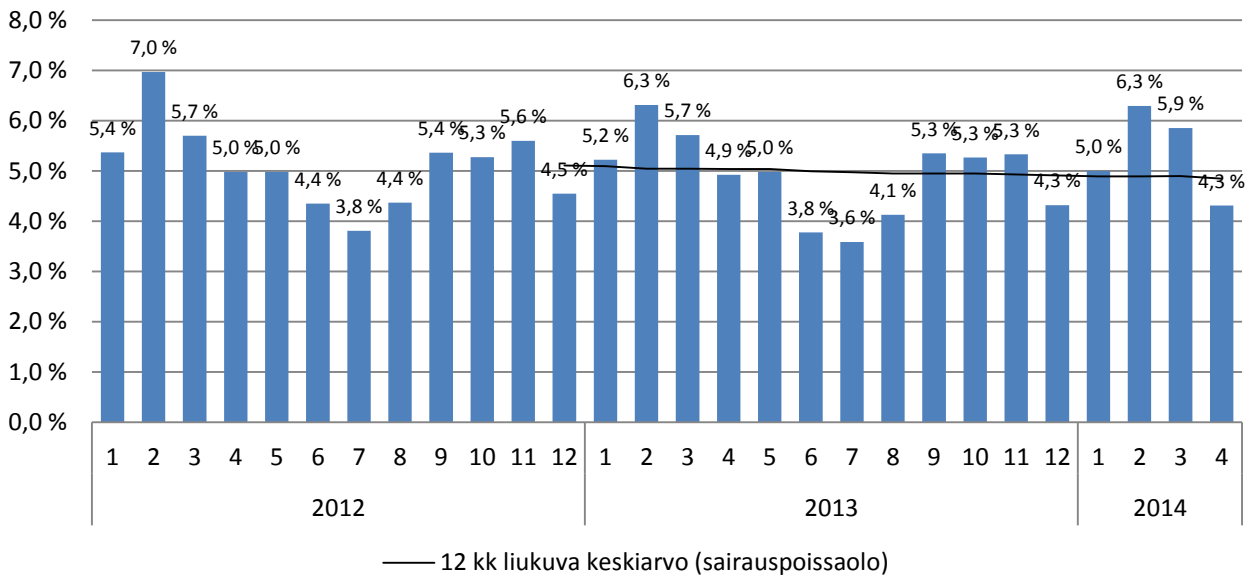


Huom! Vuoden 2012 organisaatiosta poistettu työterveyshuolto ja ympäristöterveydenhuolto. Keskiarvo vuoden alusta näyttää vertailun vastaavaan ajankohtaan muina vuosina. Henkilöstötiedot päivitetty 2.4.2014.

Sairauspoissaolo-% keskiarvo vuoden alusta

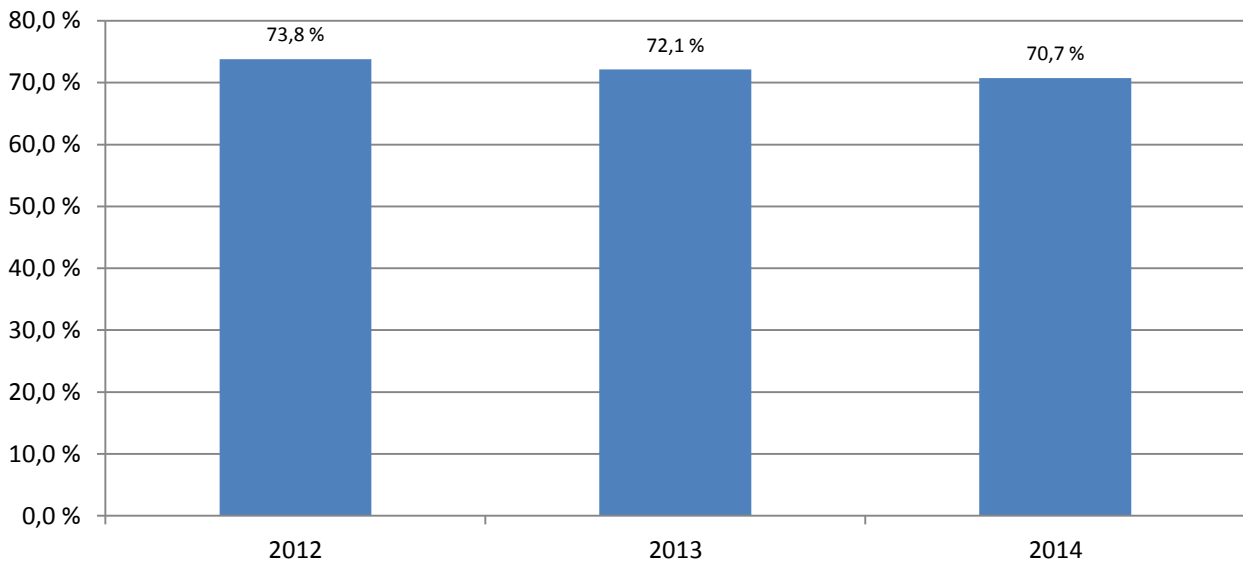


Sairauspoissaolo-% ja 12 kk keskiarvo

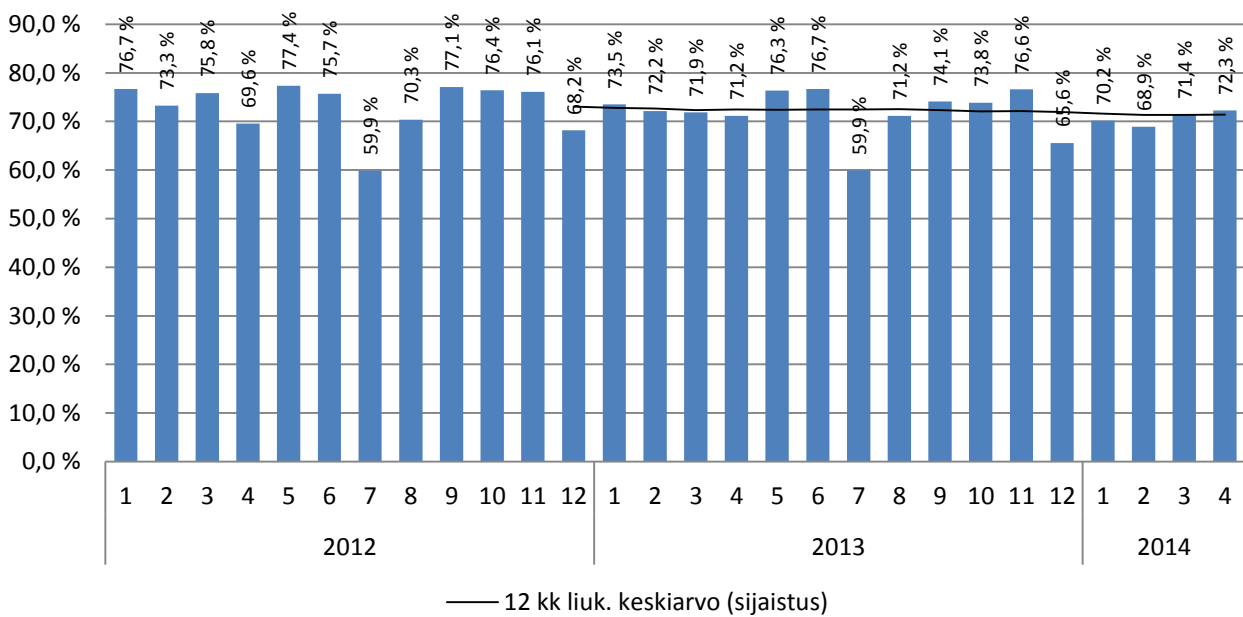


Huom! Vuoden 2012 organisaatiosta poistettu työterveyshuolto ja ympäristöterveydenhuolto. Keskiarvo vuoden alusta näyttää vertailun vastaavaan ajankohtaan muina vuosina. Henkilöstötiedot päivitetty 2.4.2014.

Sijaistus-% keskiarvo vuoden alusta

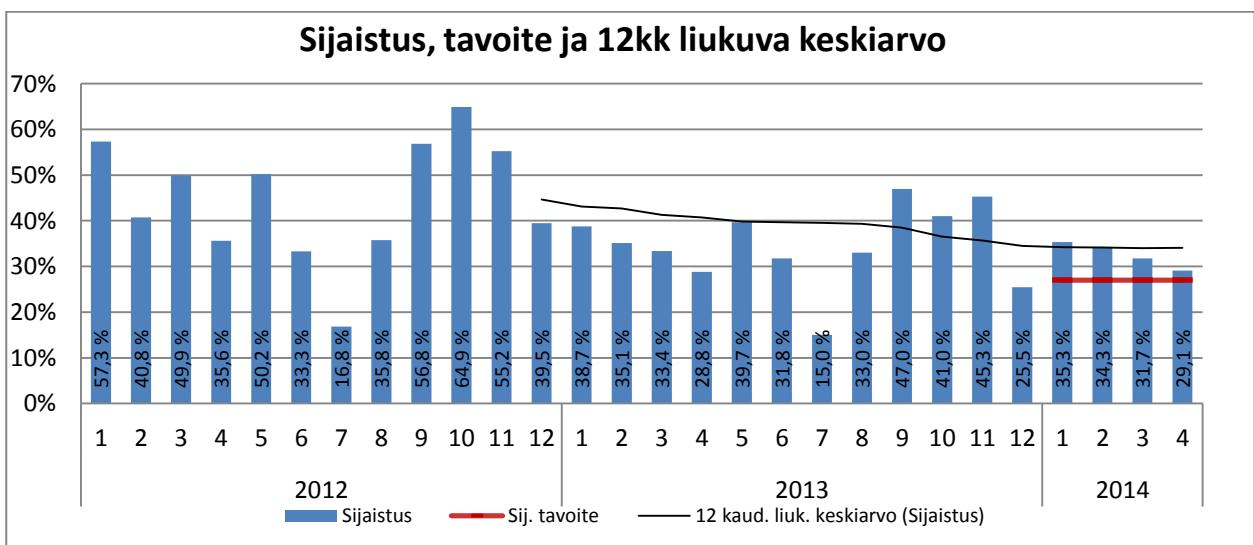
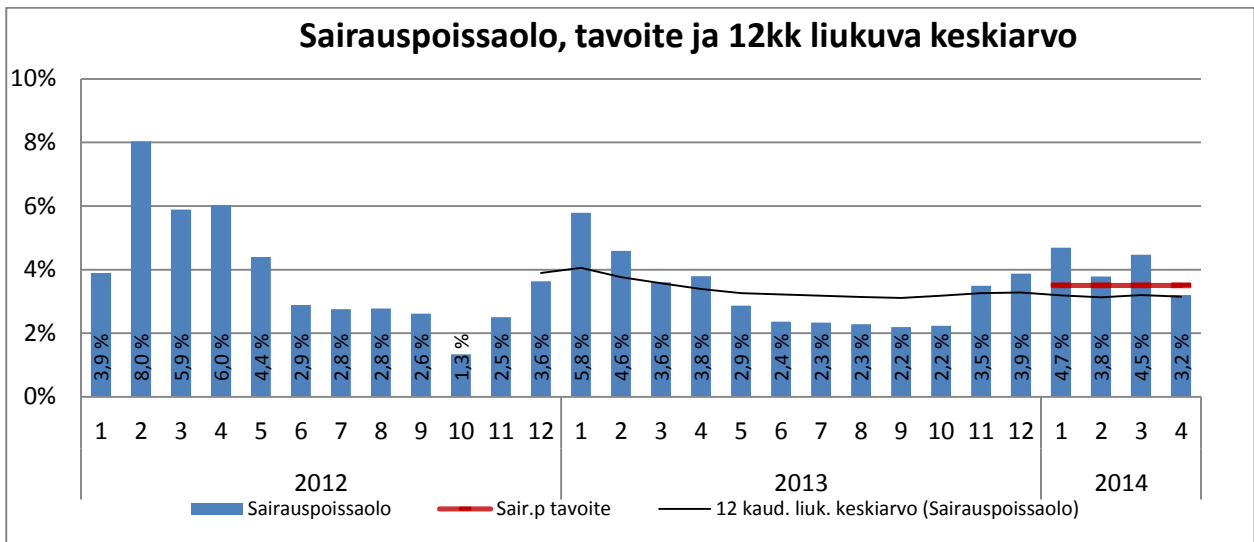
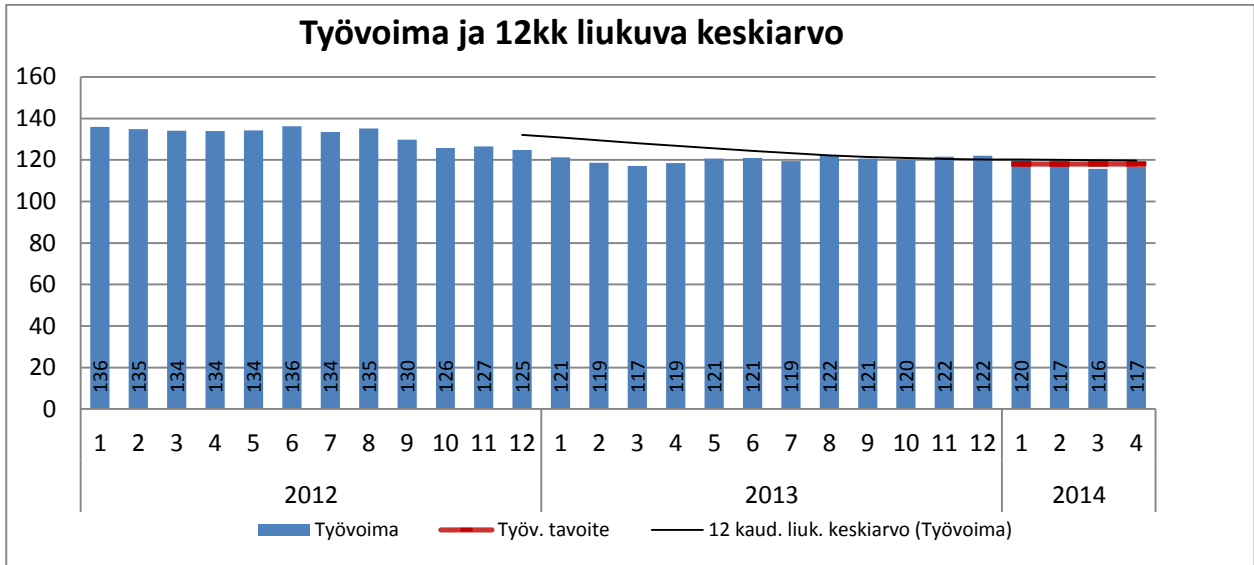


Sijaistus-% ja 12 kk keskiarvo

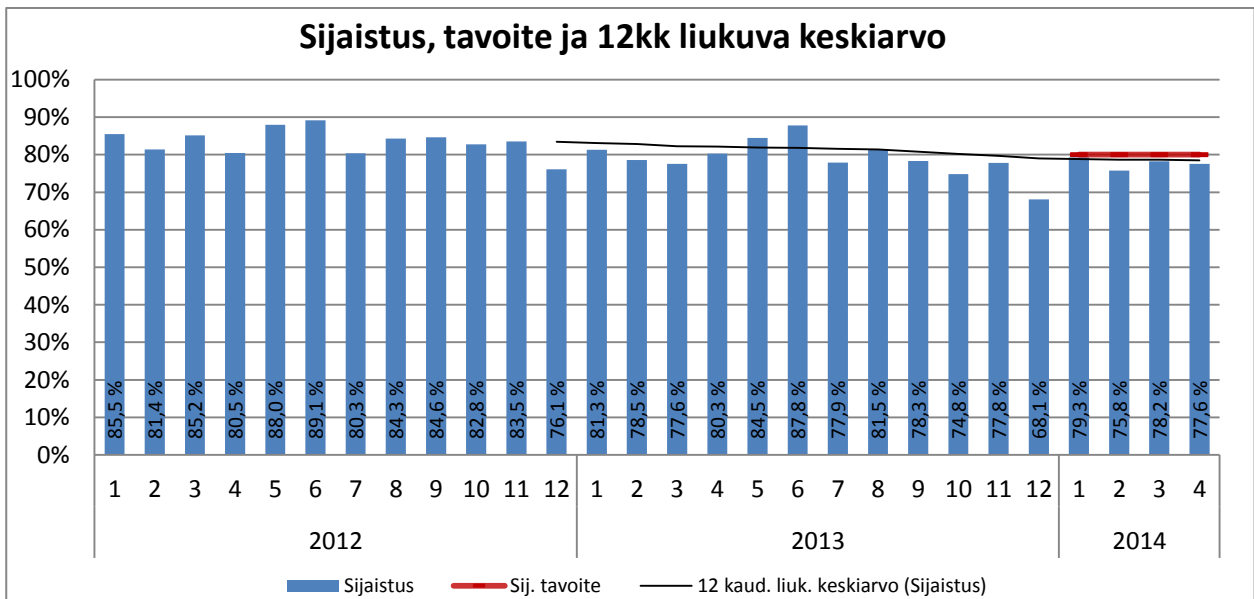
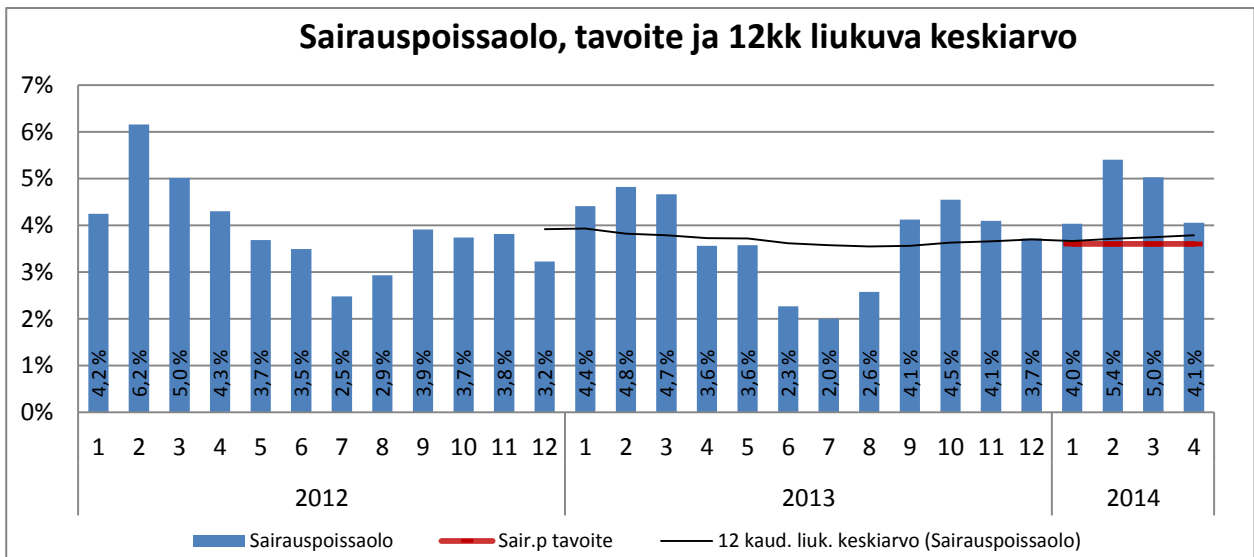
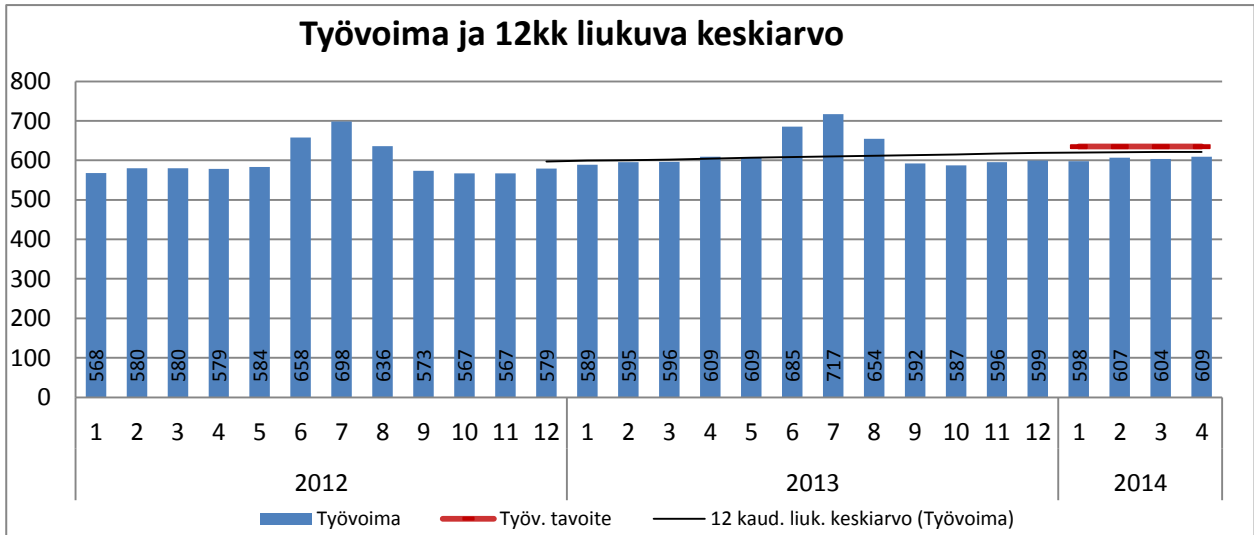


Huom! Vuoden 2012 organisaatiosta poistettu työterveyshuolto ja ympäristöterveydenhuolto. Keskiarvo vuoden alusta näyttää vertailun vastaavaan ajankohtaan muina vuosina. Henkilöstötiedot päivitetty 2.4.2014.

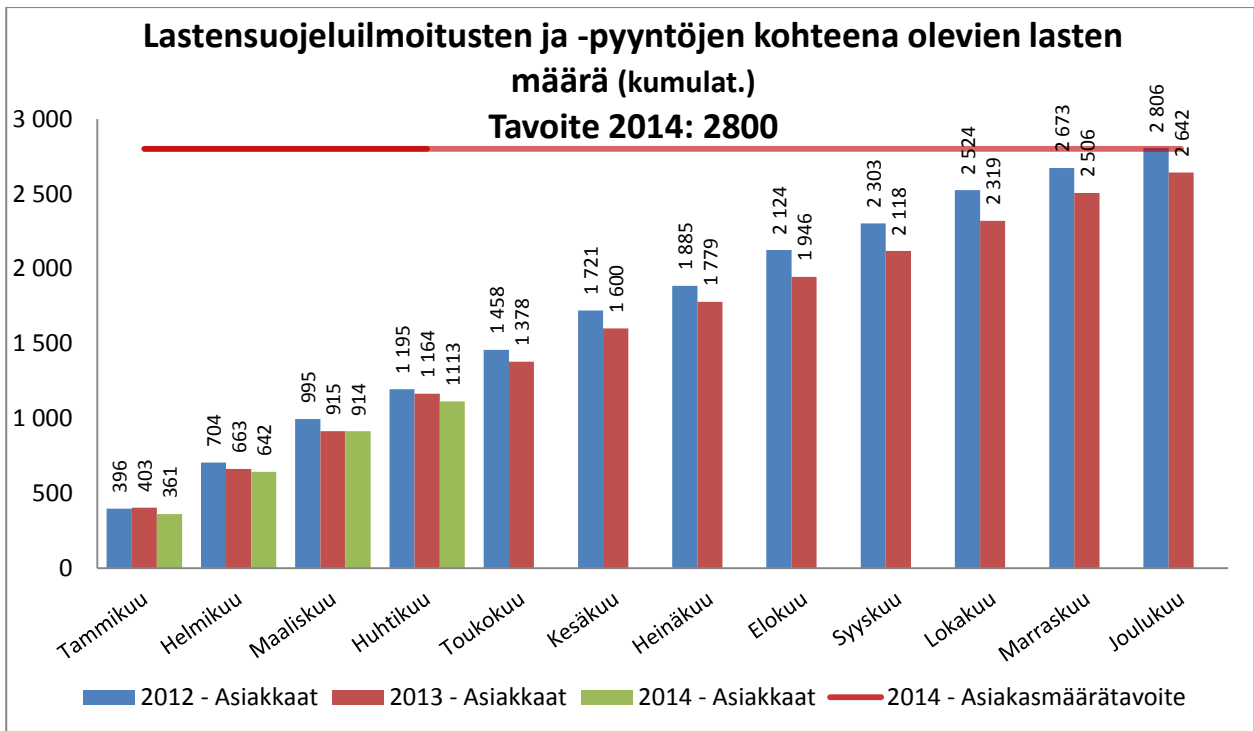
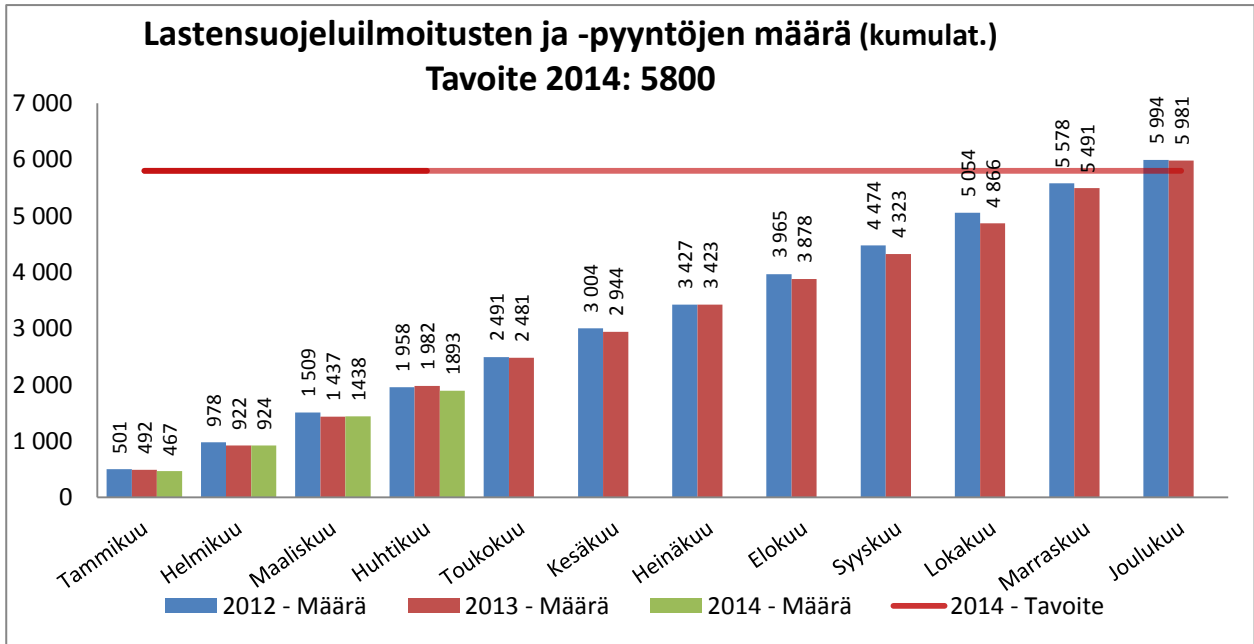
HALLINTO

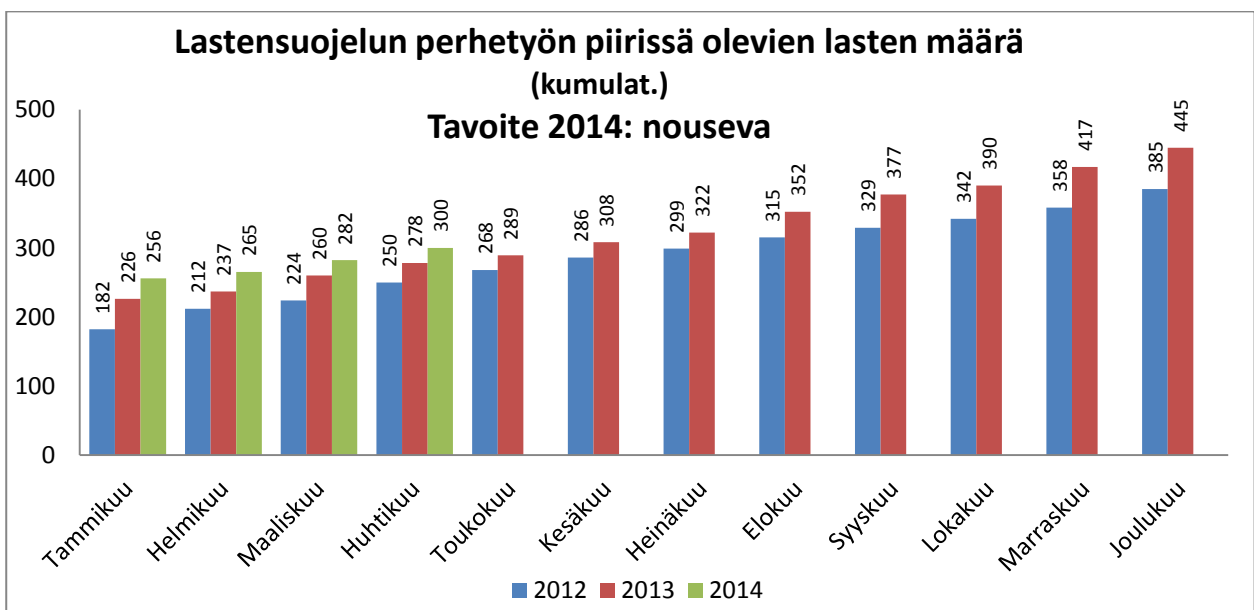
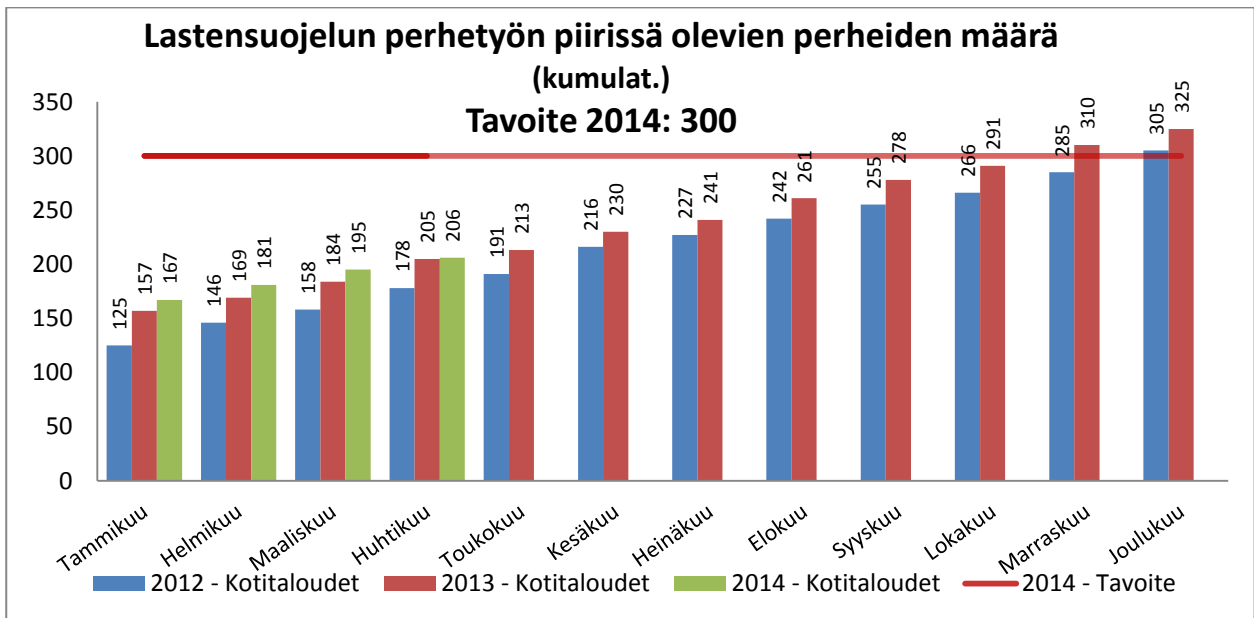
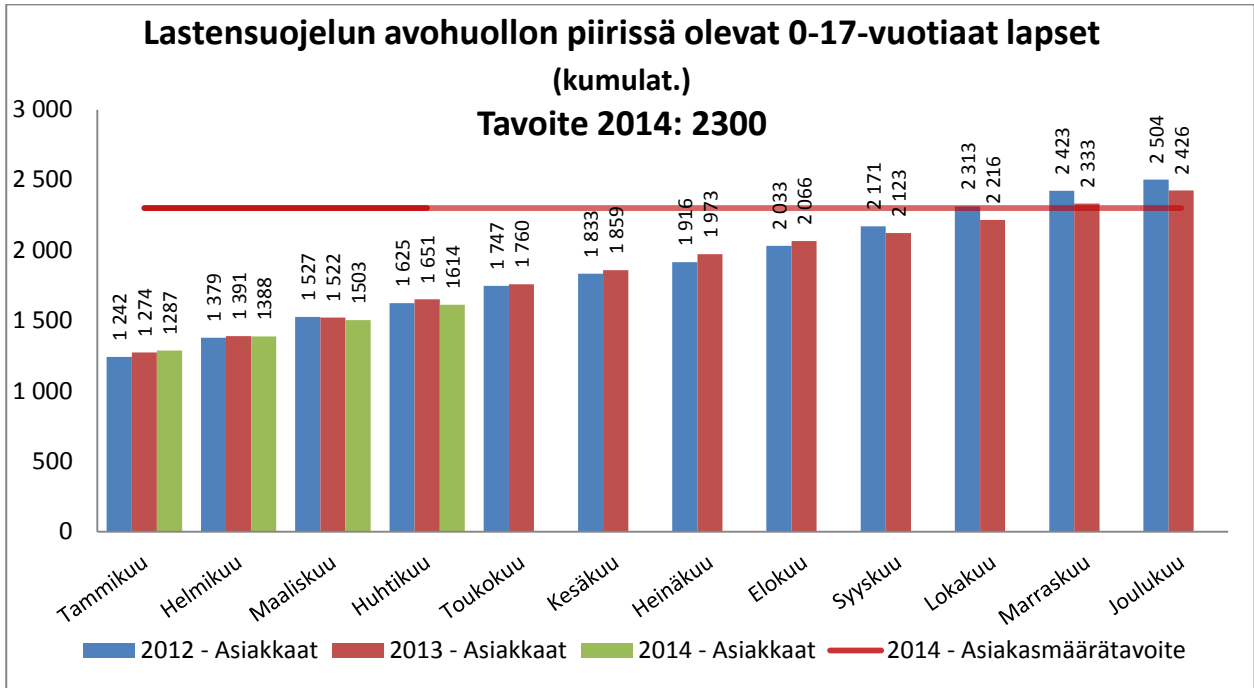


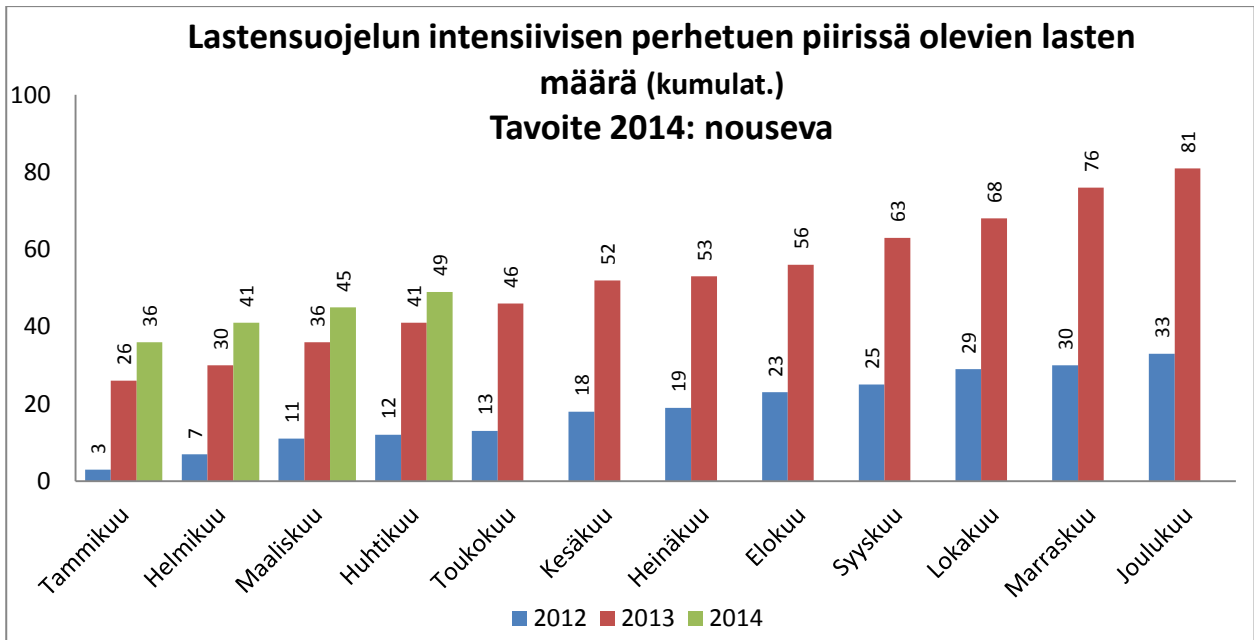
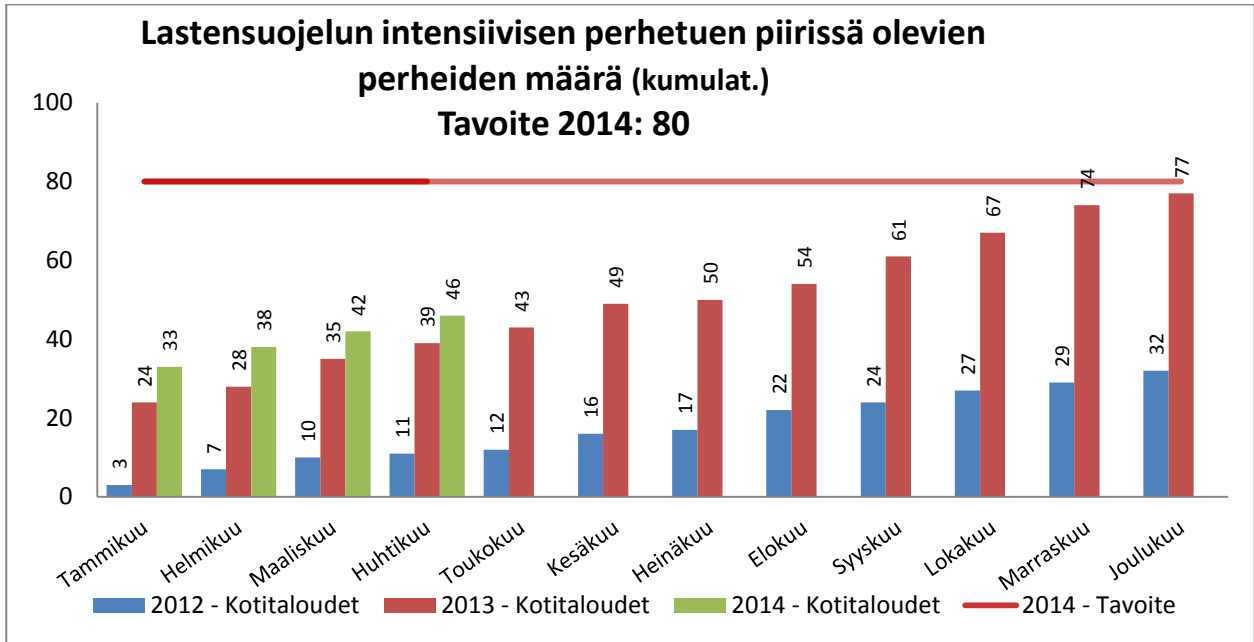
SOSIAALITYÖ

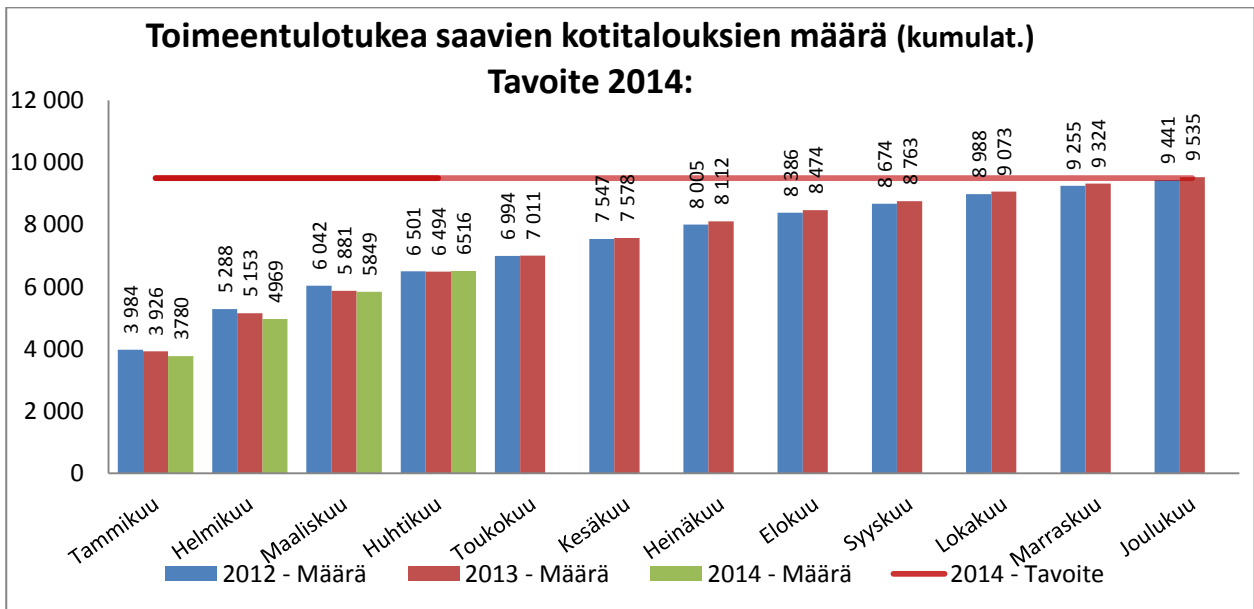
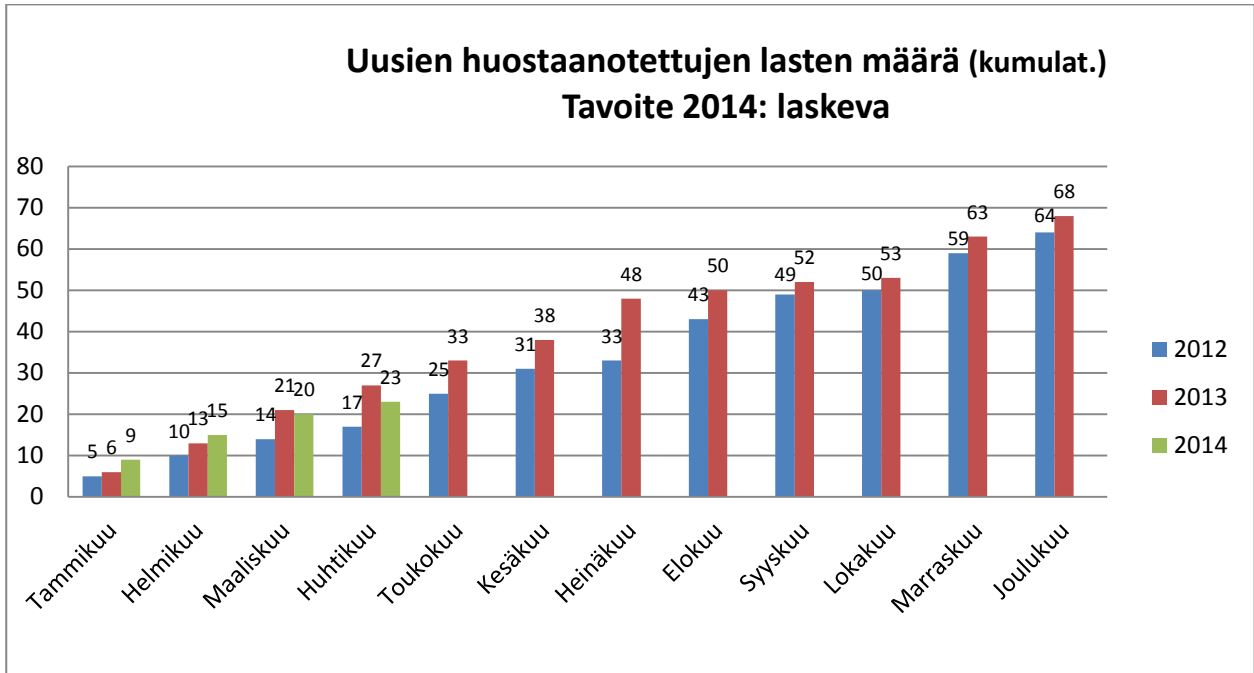


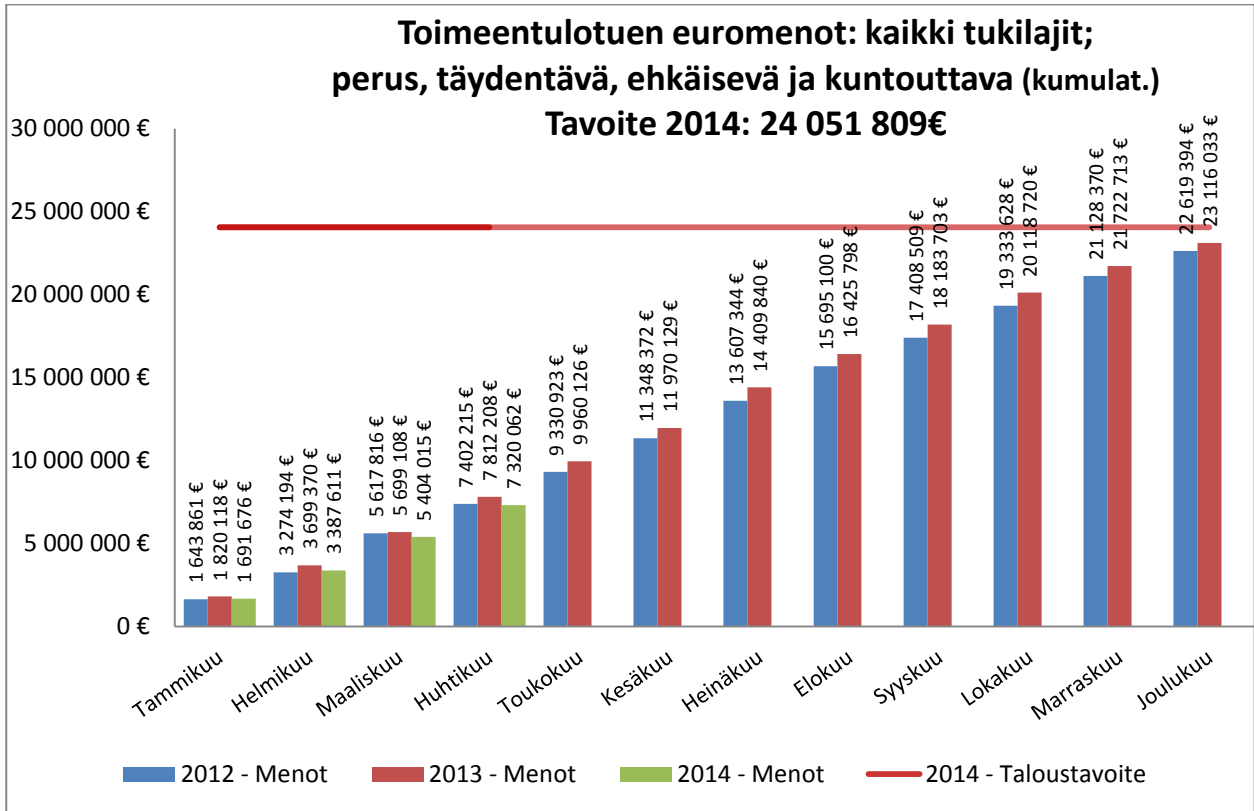
Avohuollon sosiaalityö



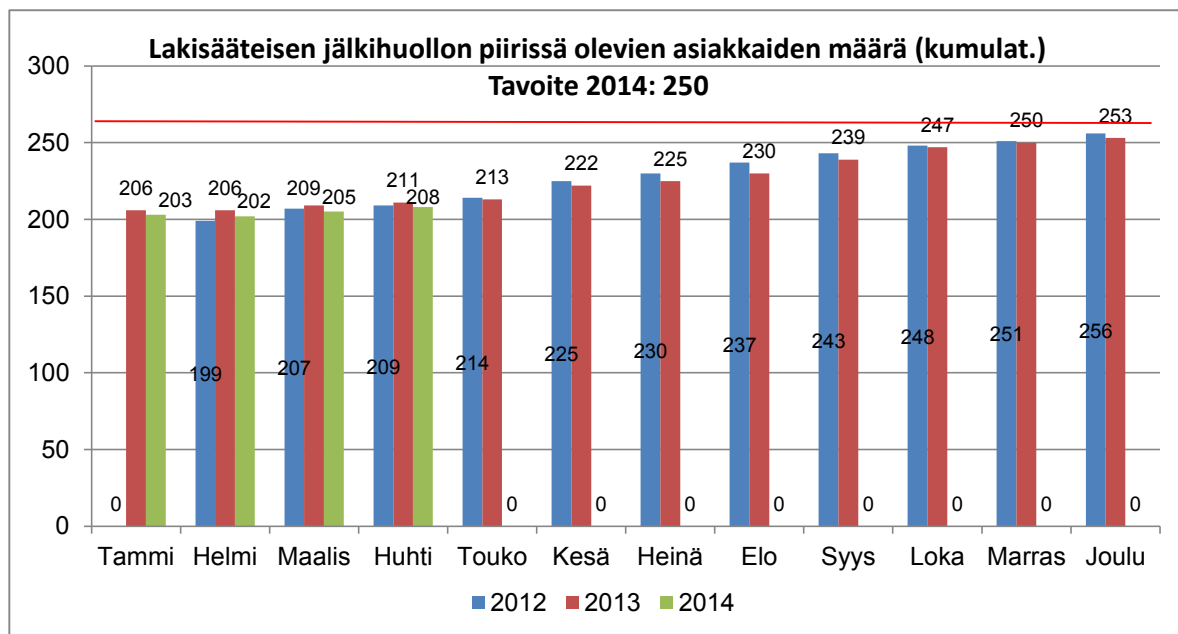
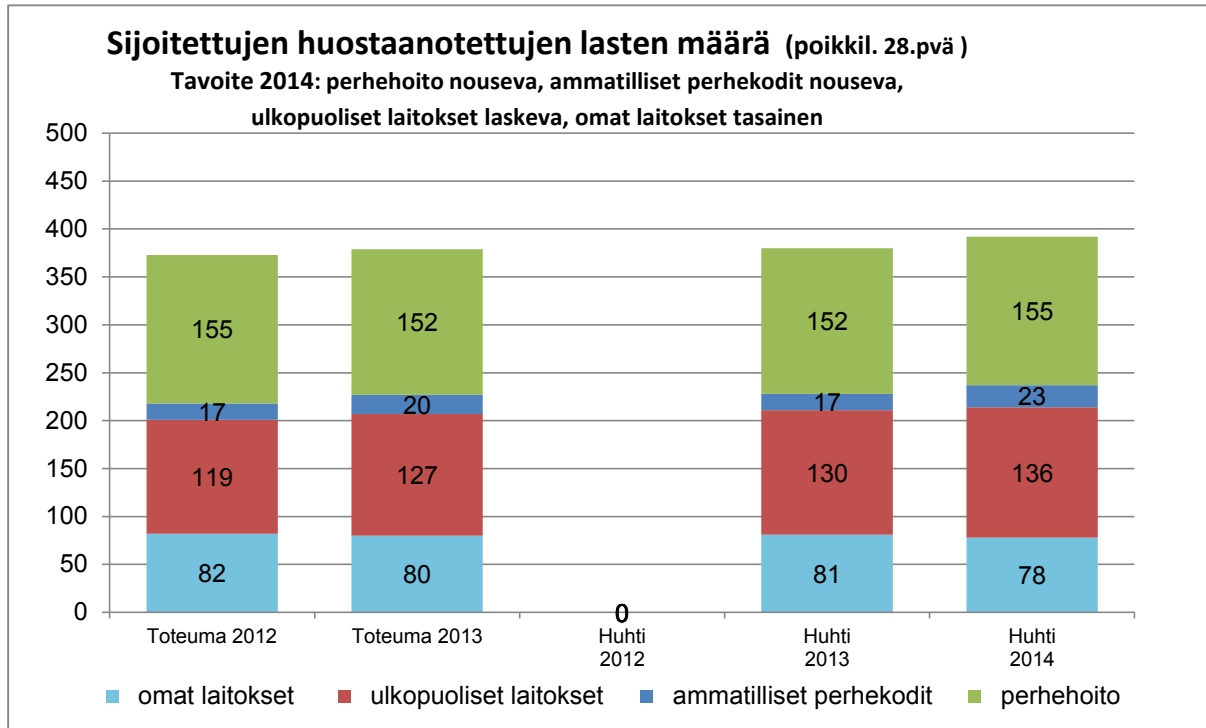




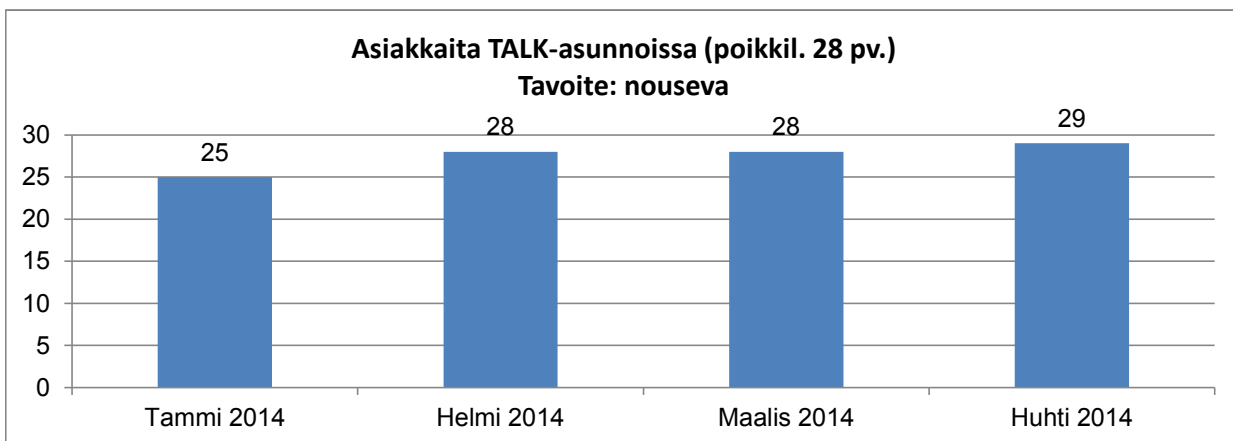
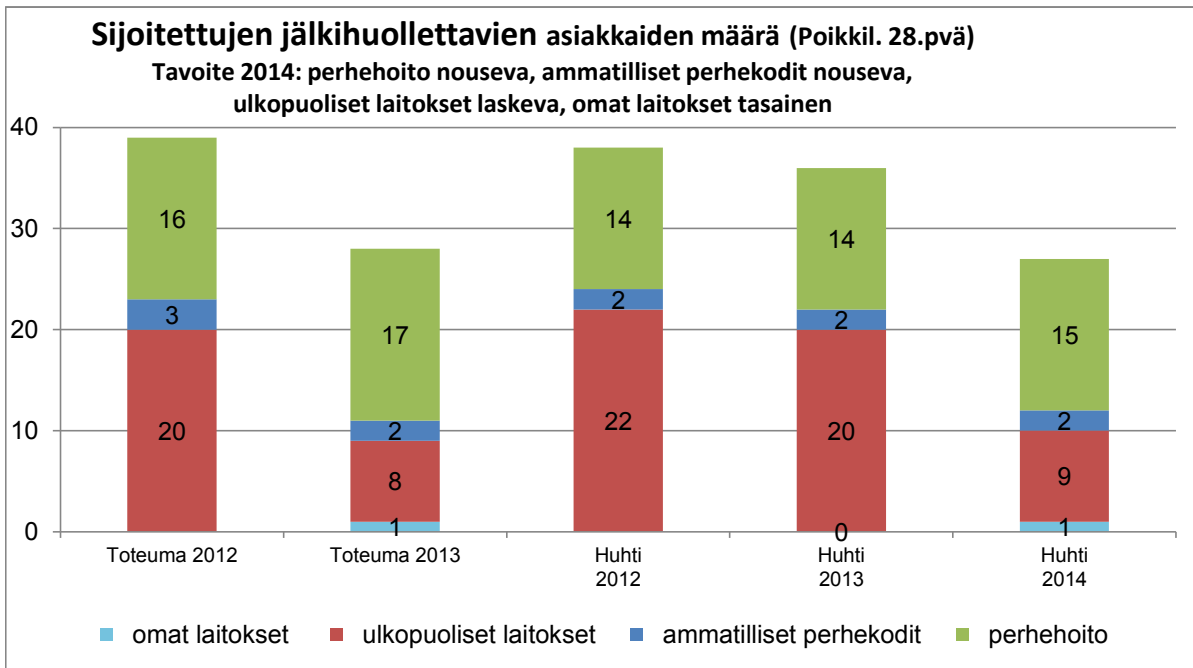




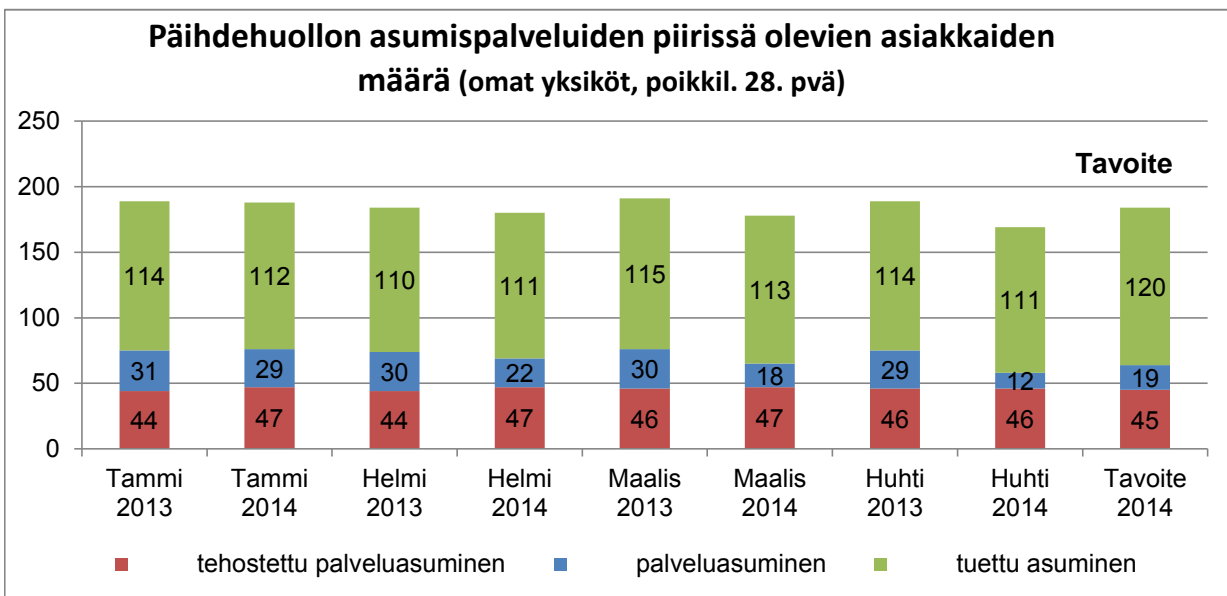
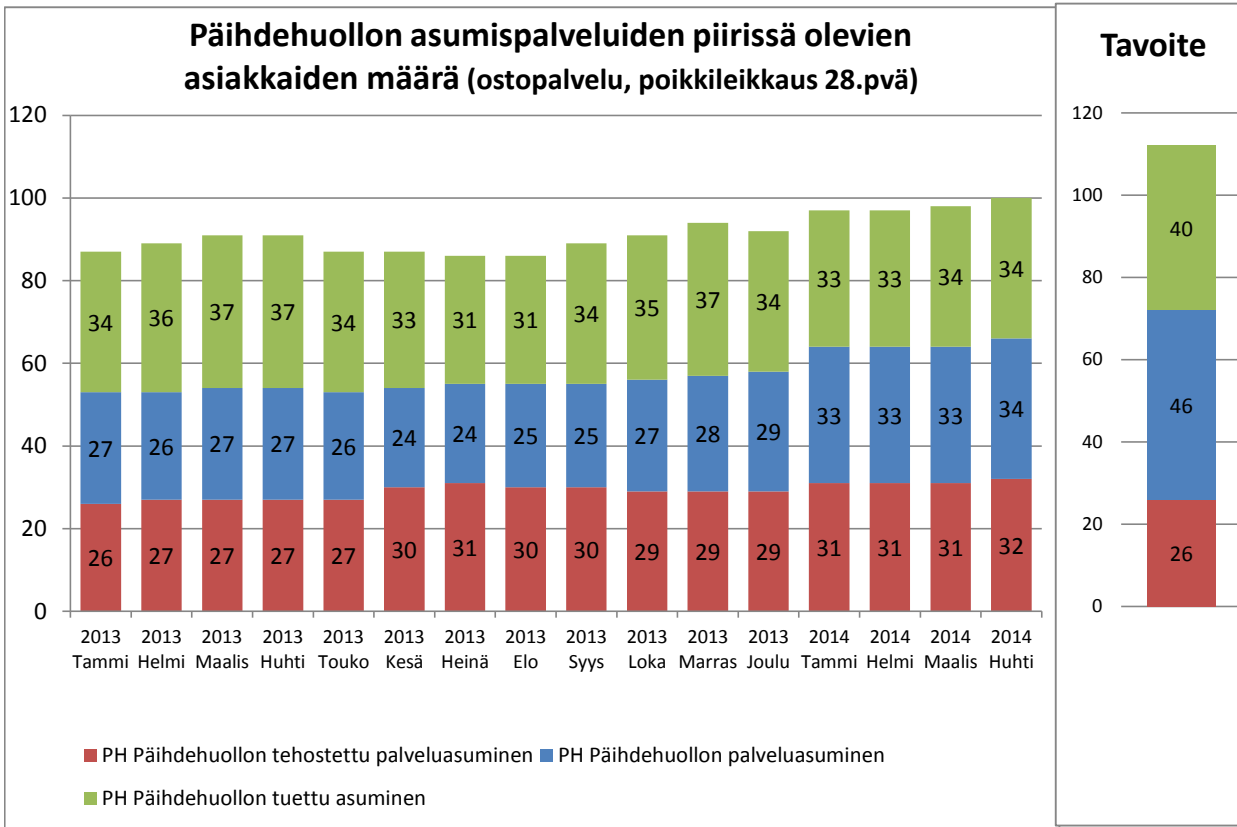
Sijaishuollon sosiaalityö



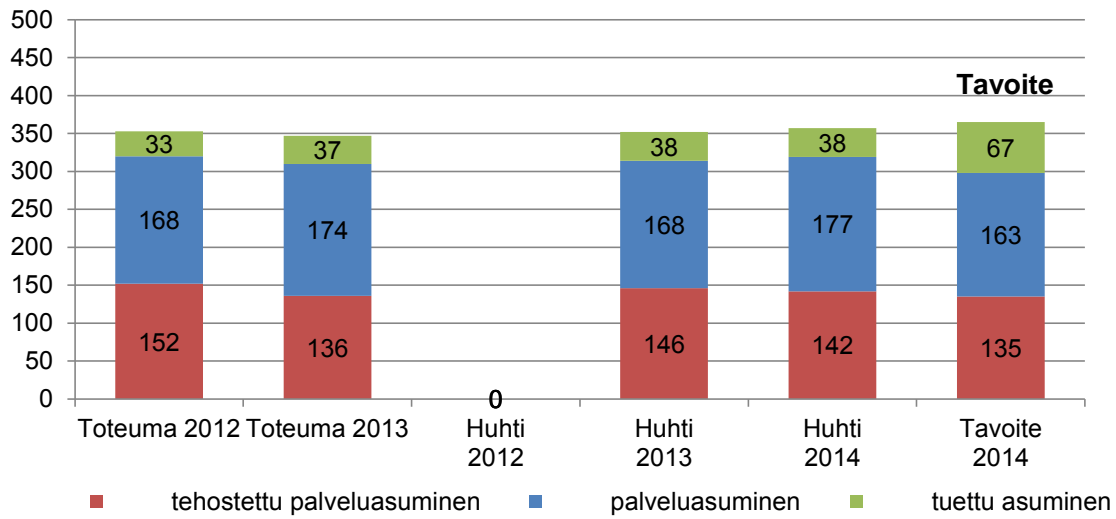
Kumulat. tarkoittaa asiakastapahtumien summaa tai eri asiakkaiden määrää vuoden alusta raportointikuukauden loppuun.



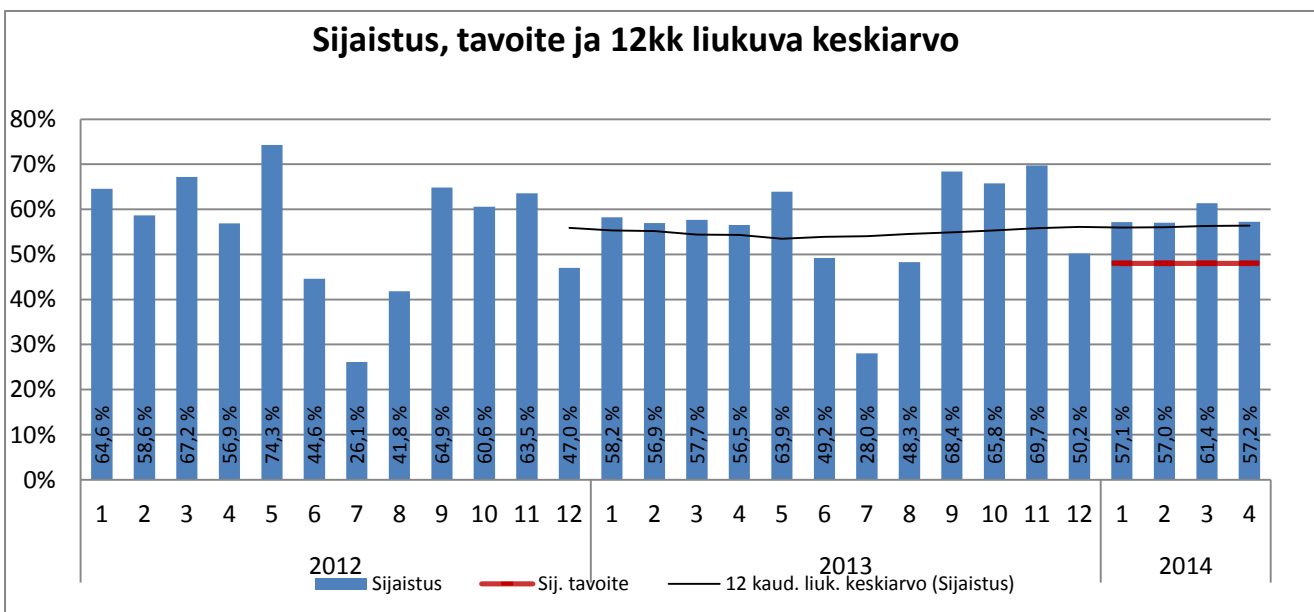
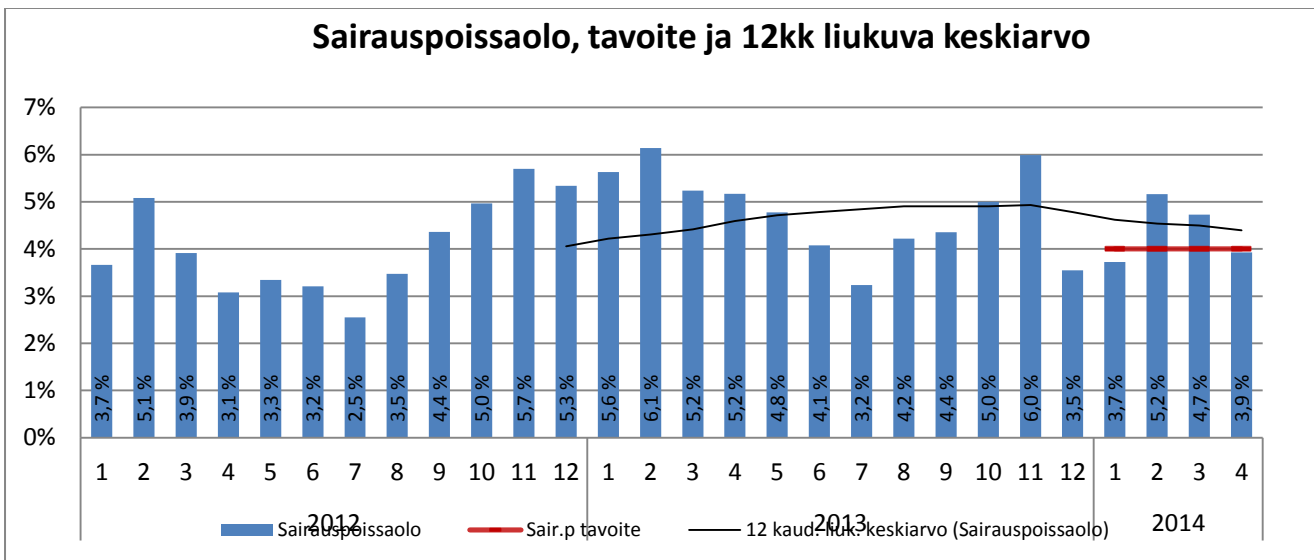
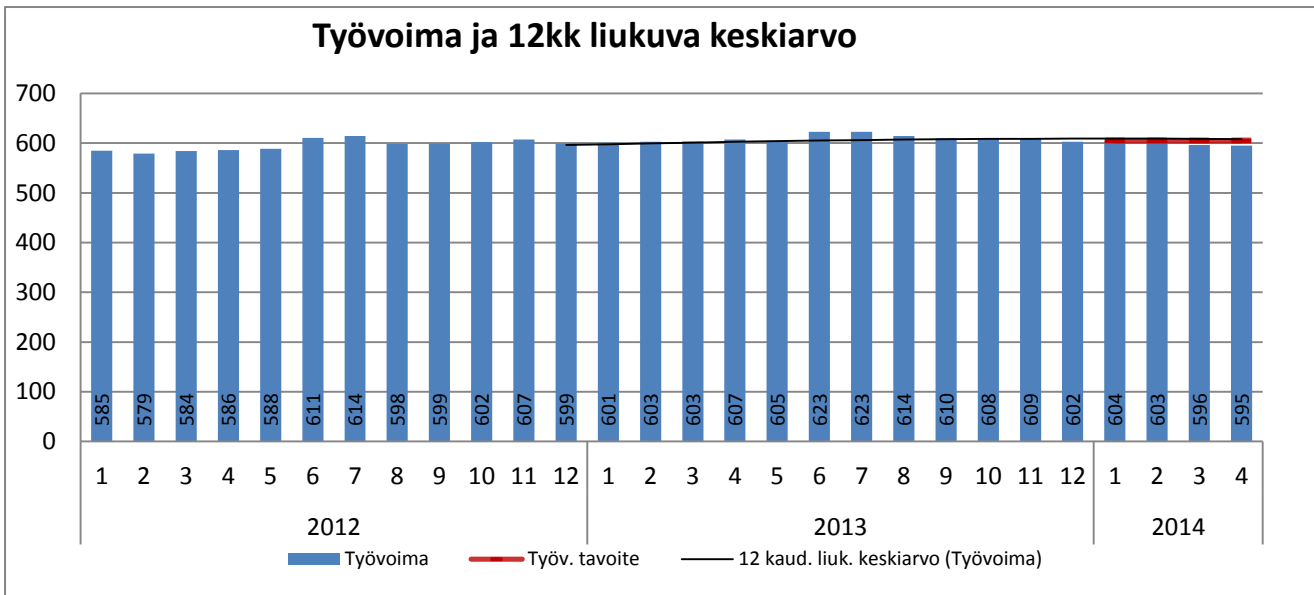
Sosiaalityön erityispalvelut



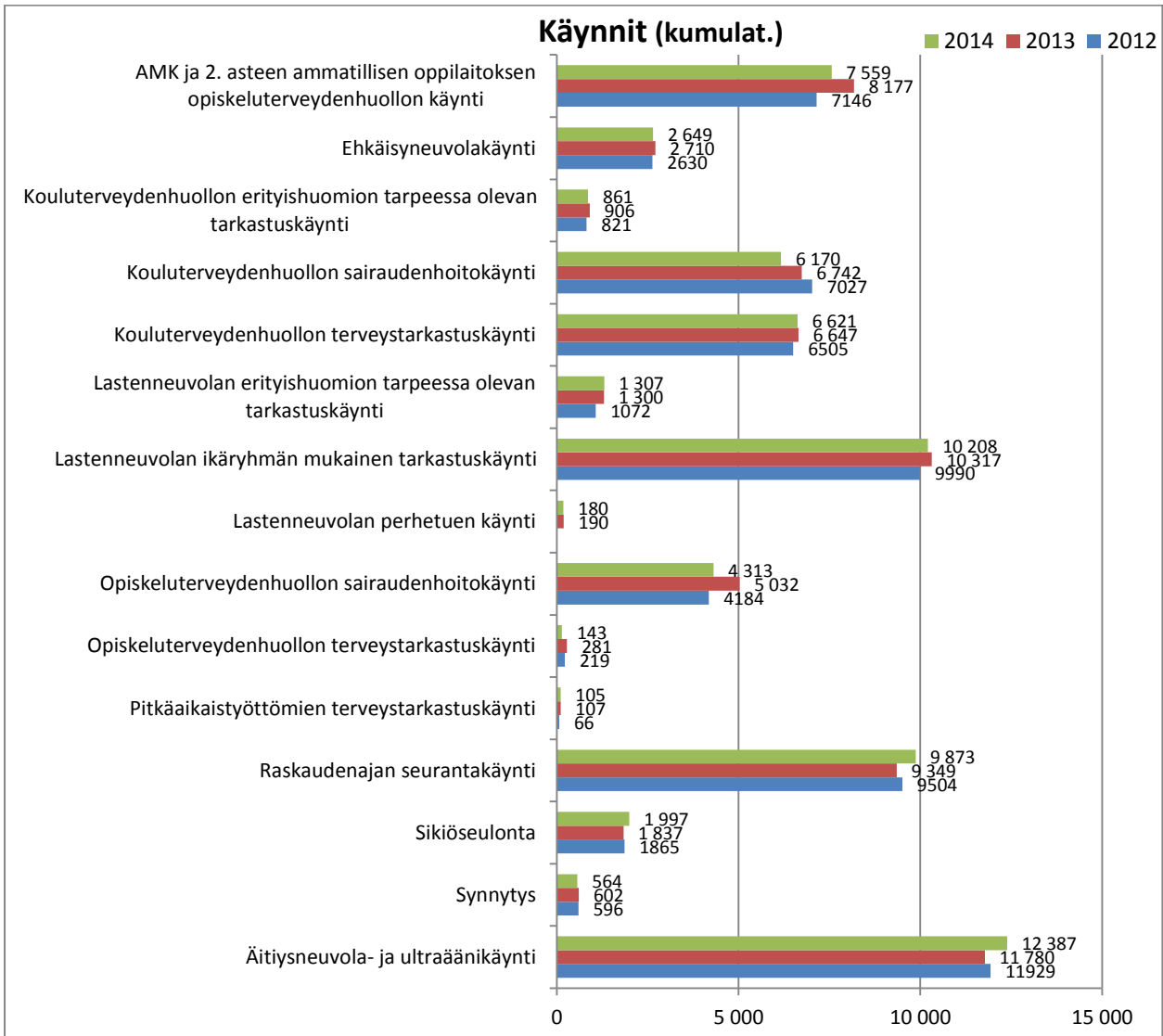
Mielenterveyskuntoutujien asumispalveluiden piirissä olevien asiakkaiden määrä (ostopalvelu, poikkil. 28.pvä)

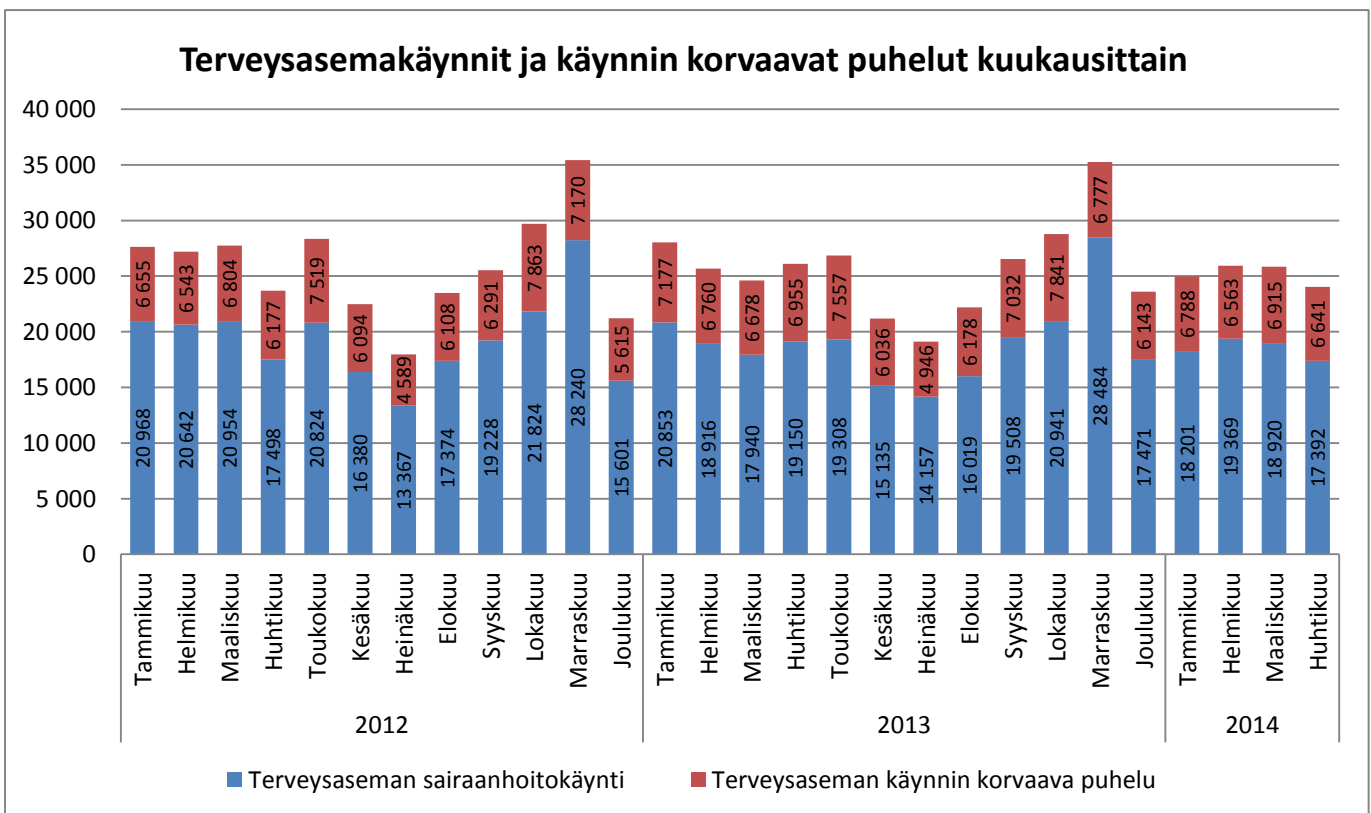
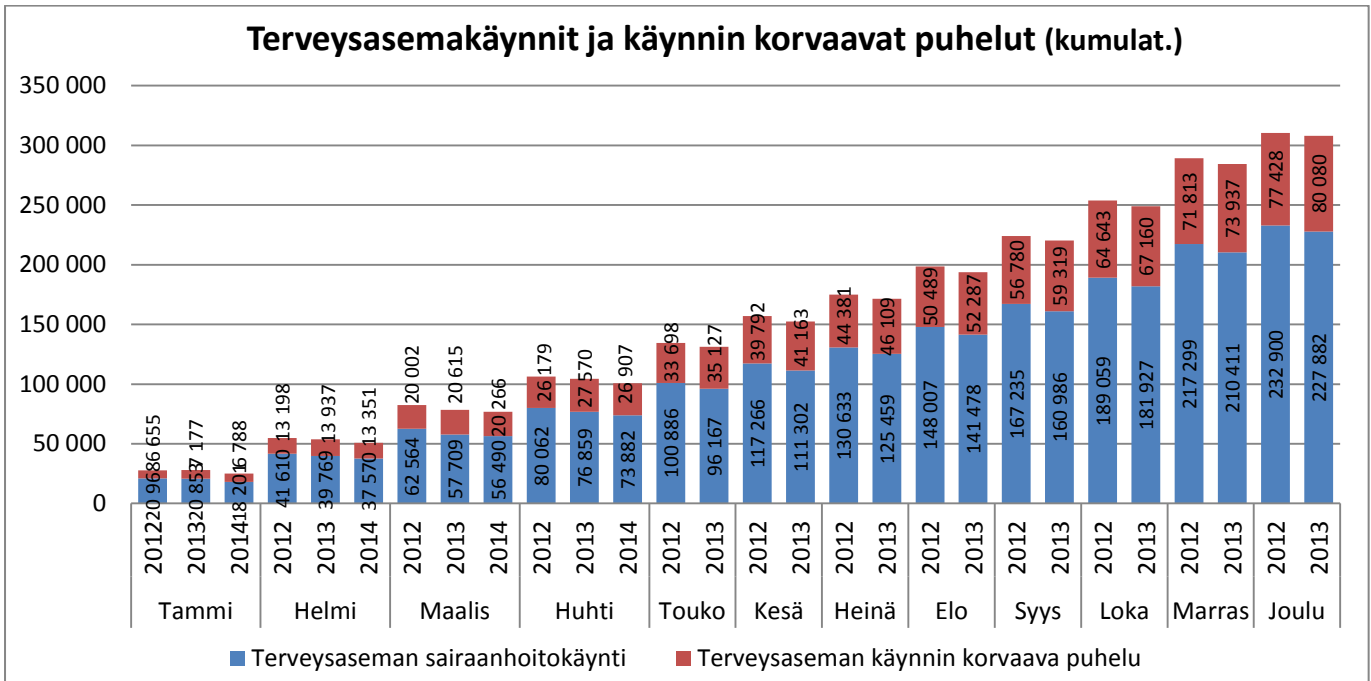


PERUSTERVEYDENHUOLTO

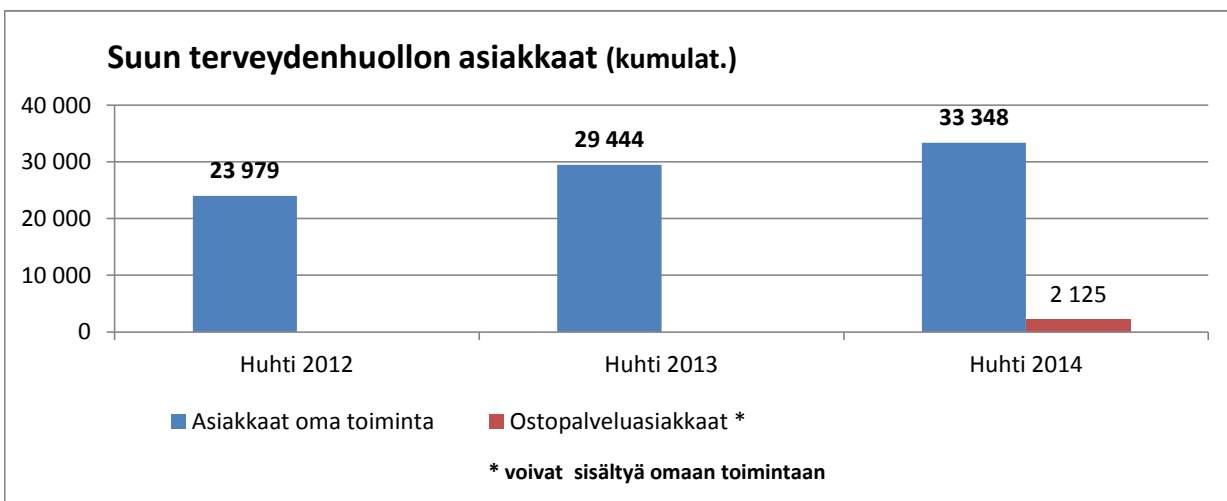
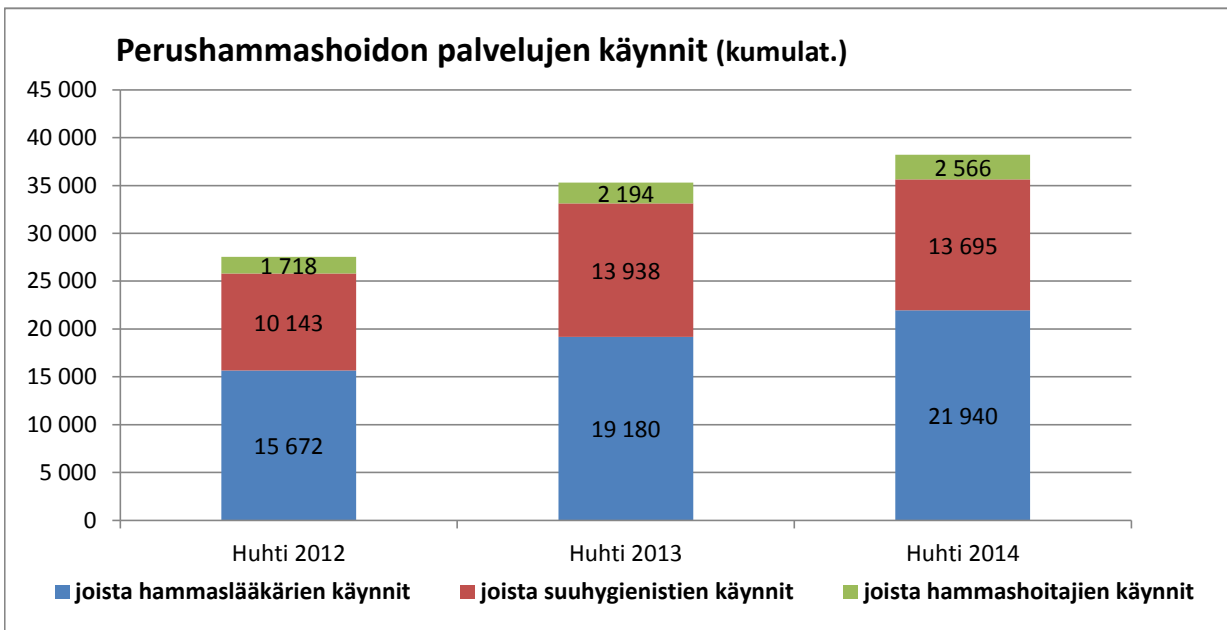
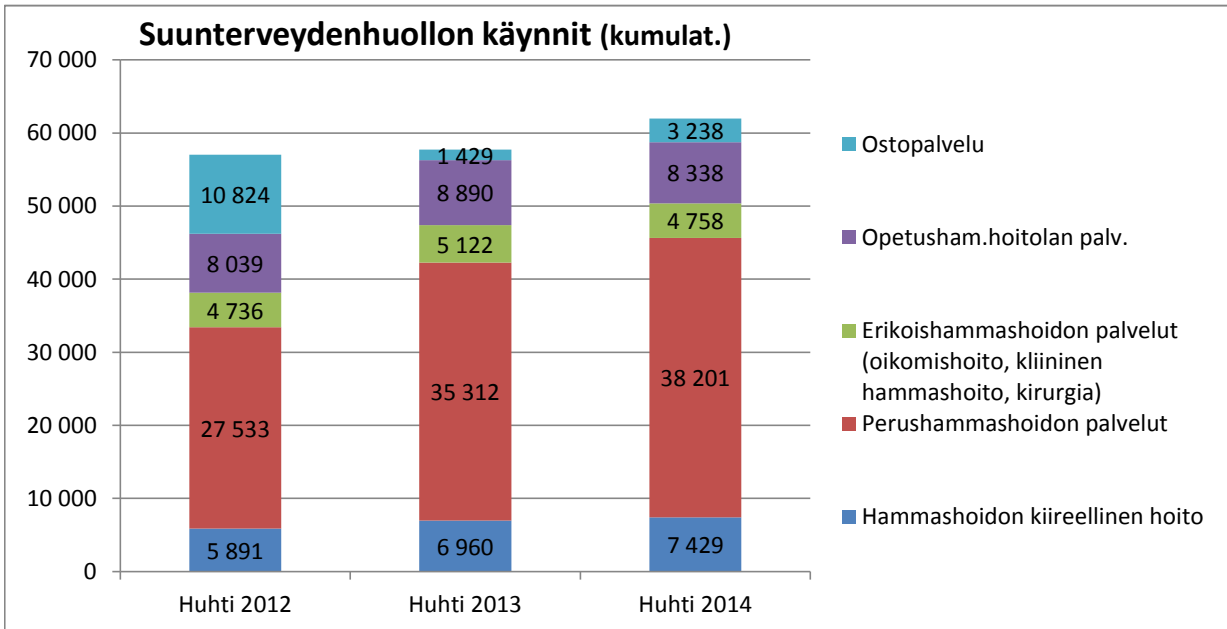


Kumulat. tarkoittaa asiakastapahtumien summaa tai eri asiakkaiden määrää vuoden alusta raportointikuukauden loppuun.

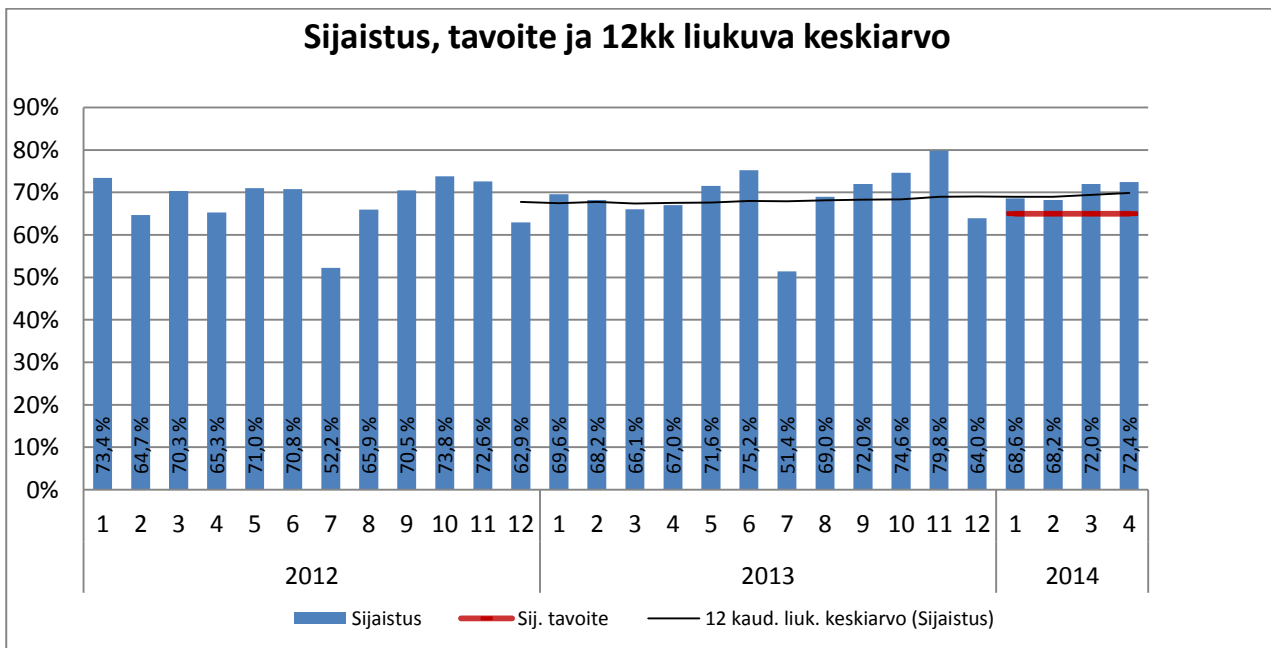
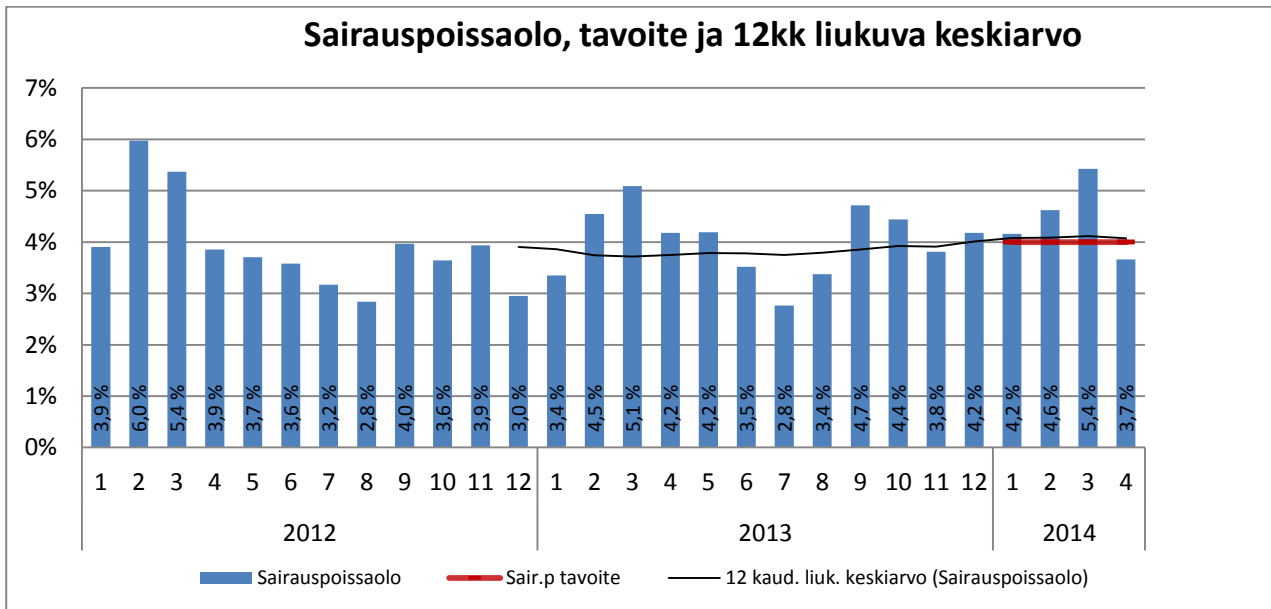
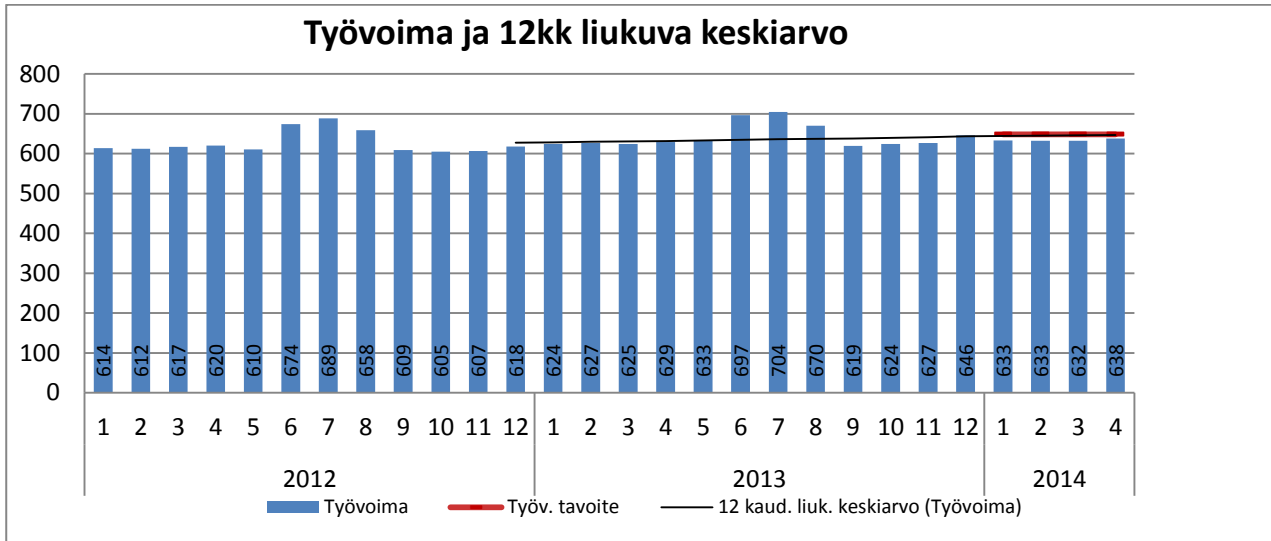




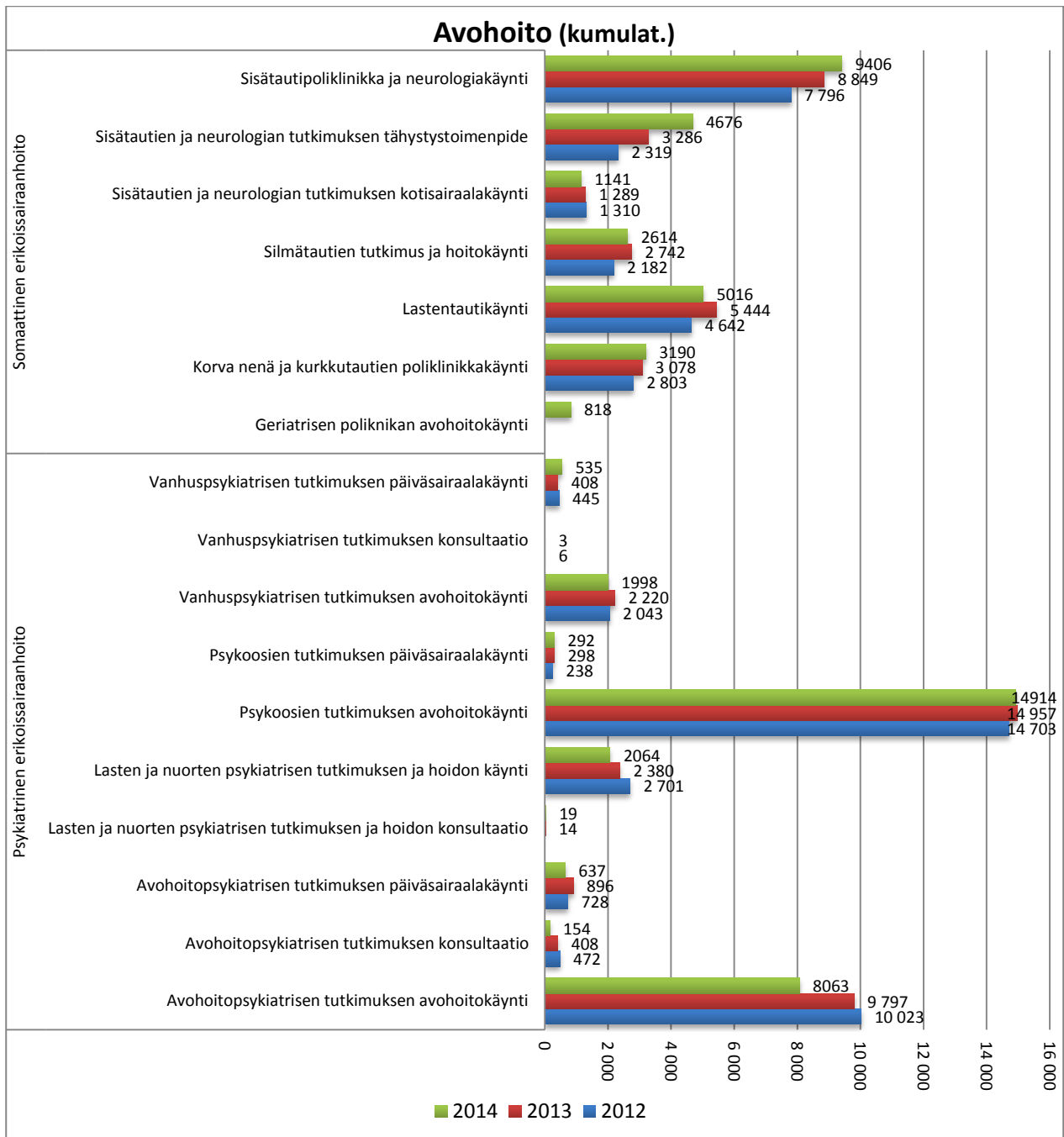
Suunterveydenhuolto



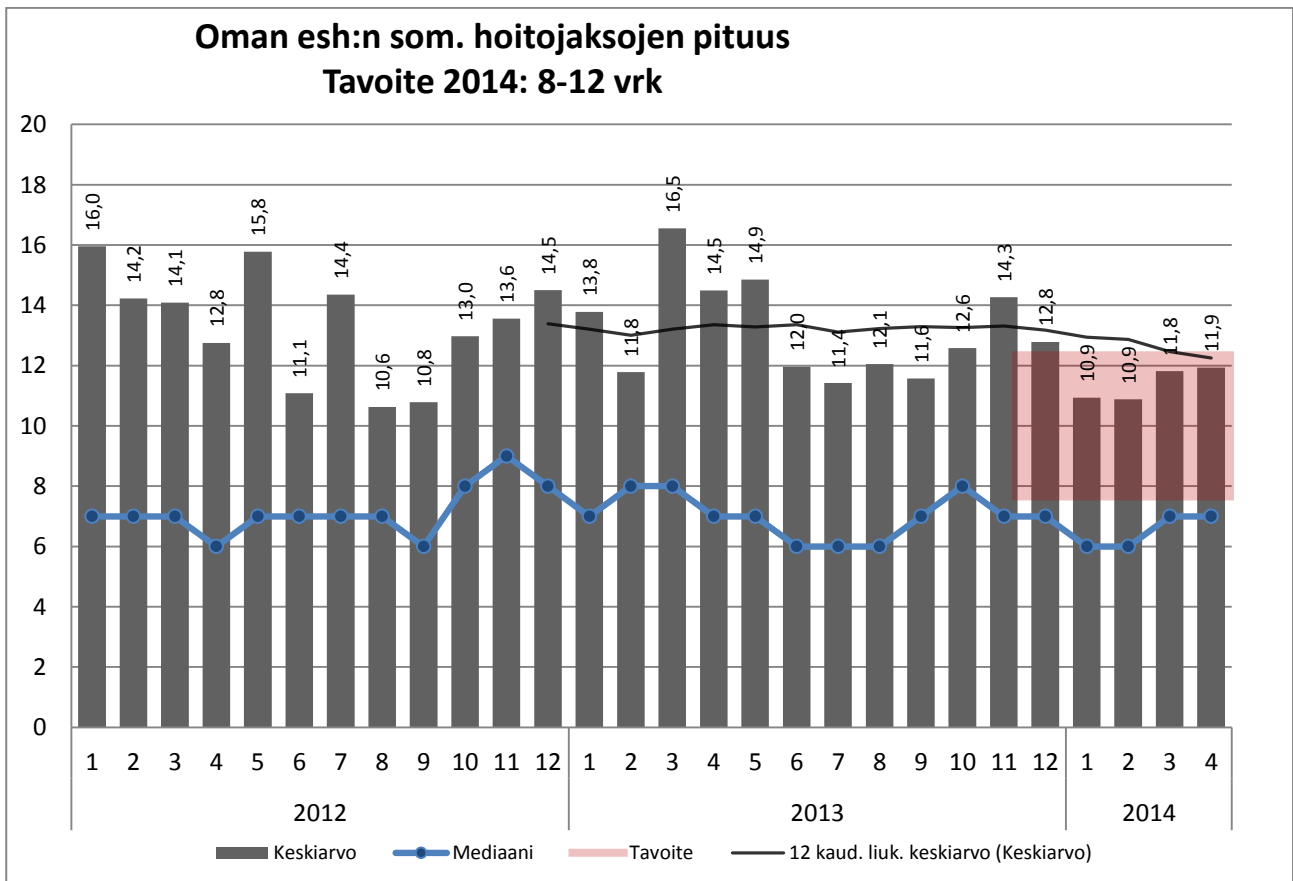
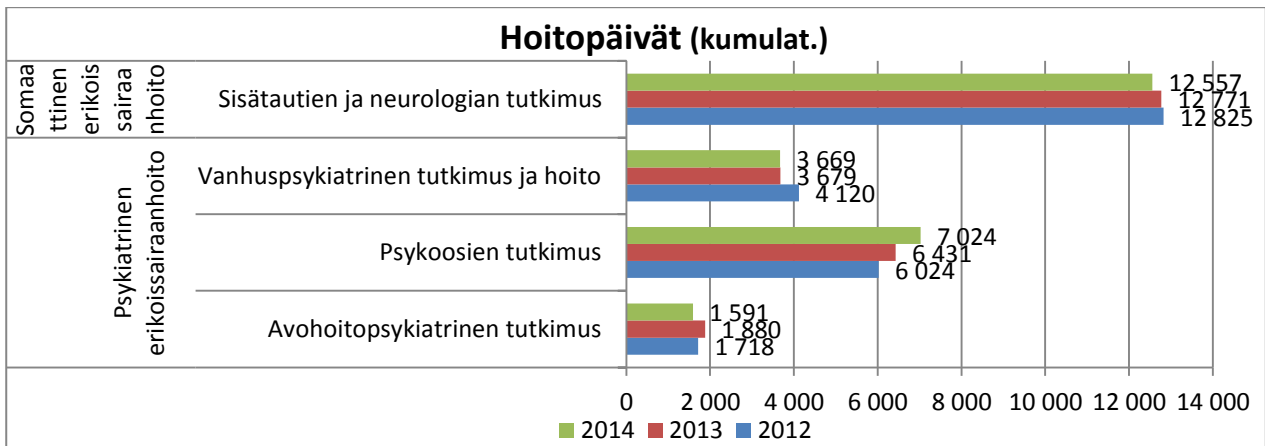
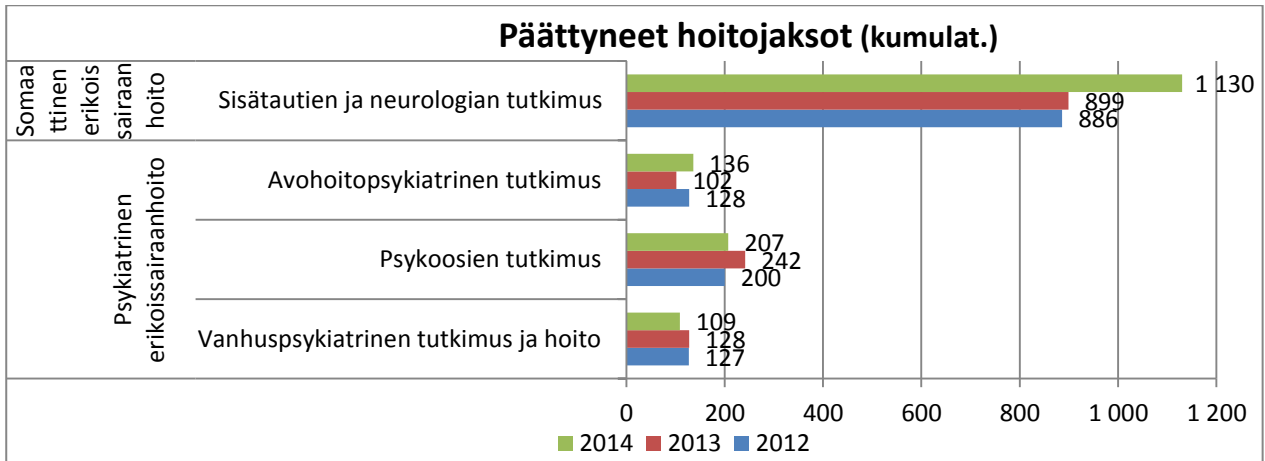
ERIKOISSAIRAANHOITO



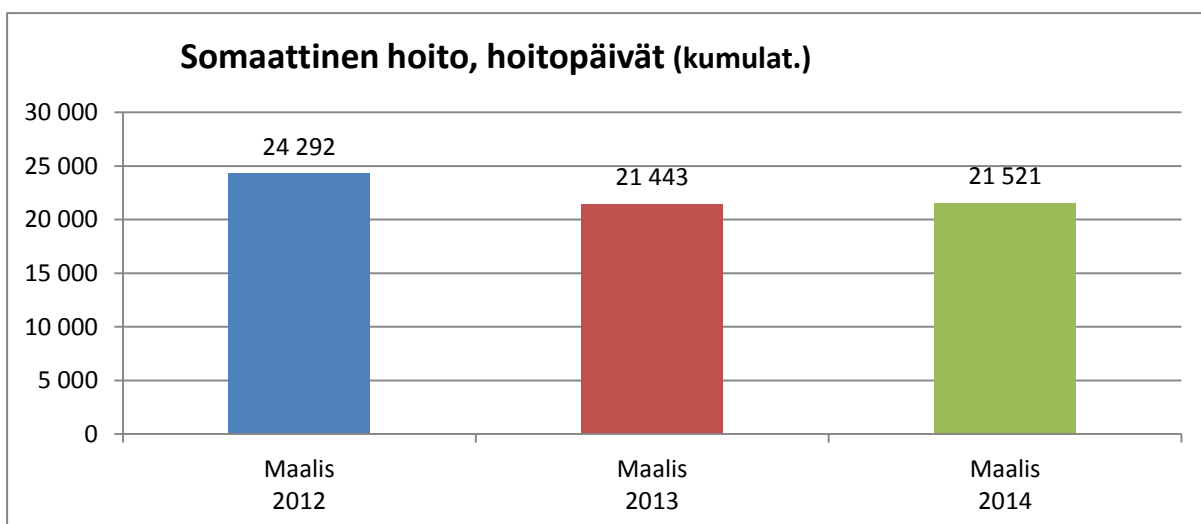
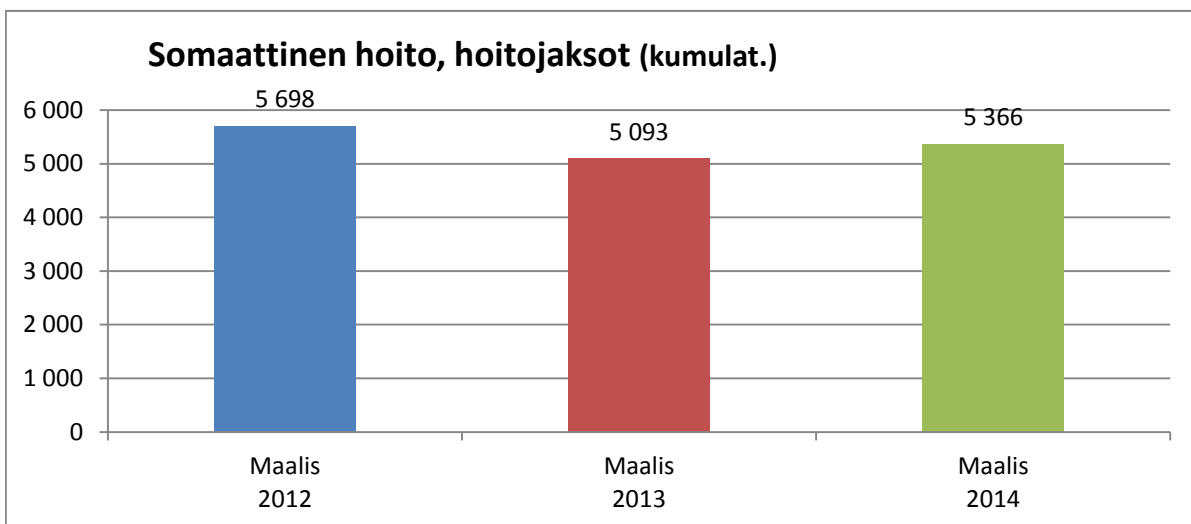
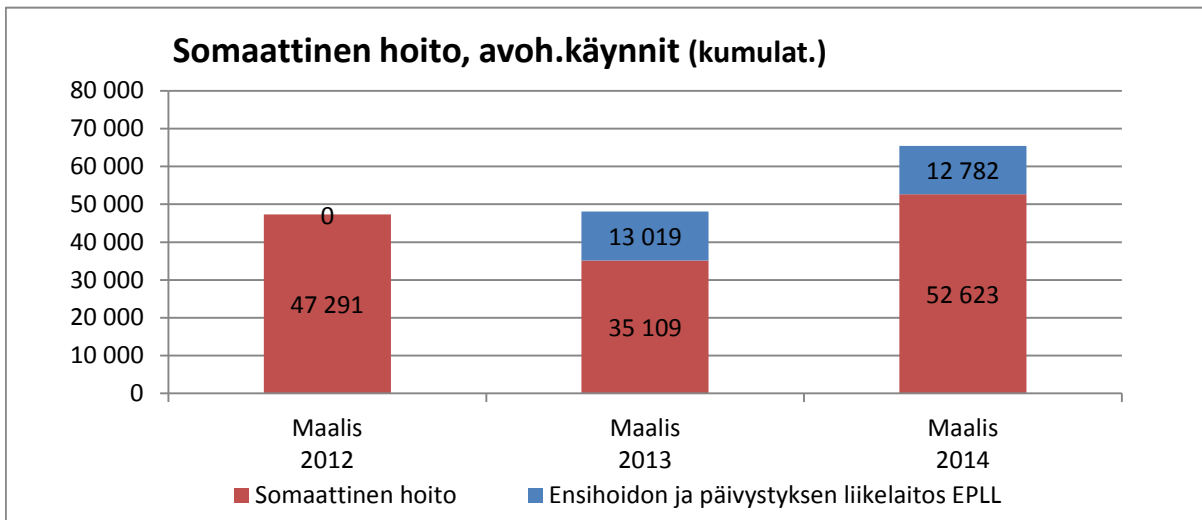
Oma toiminta: Avohoito

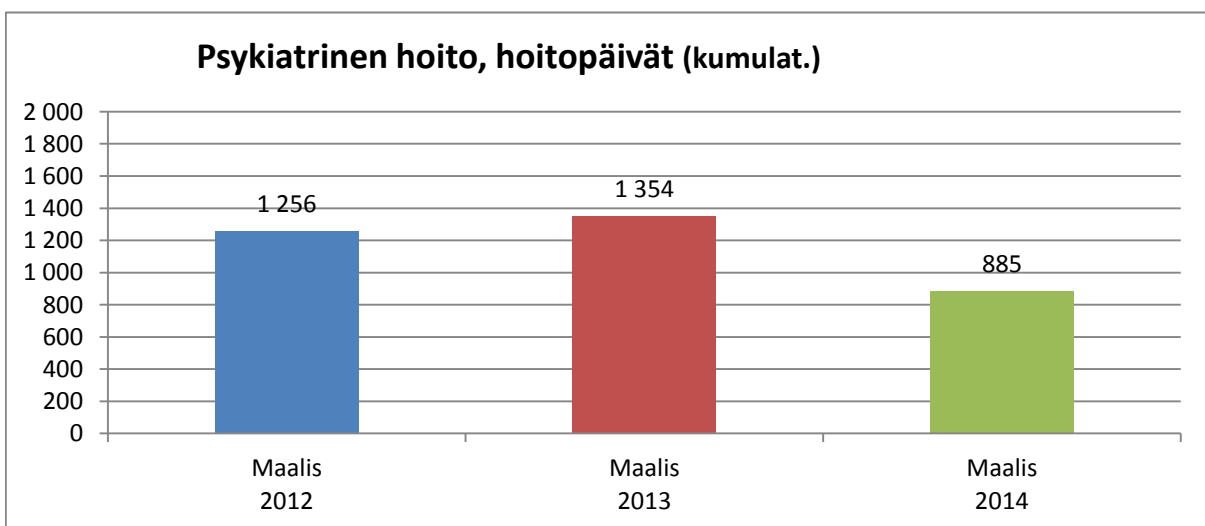
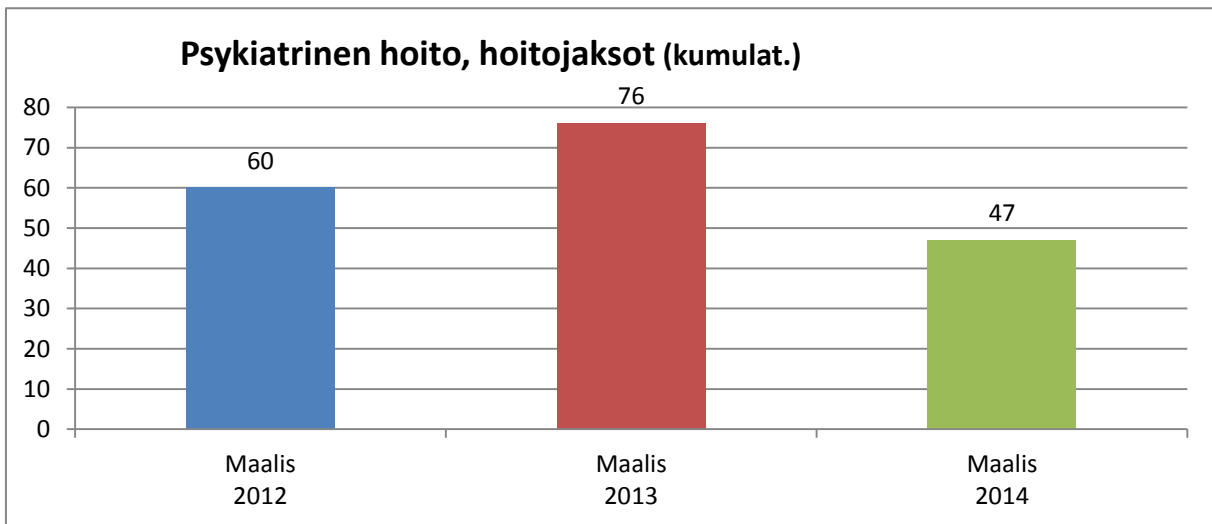
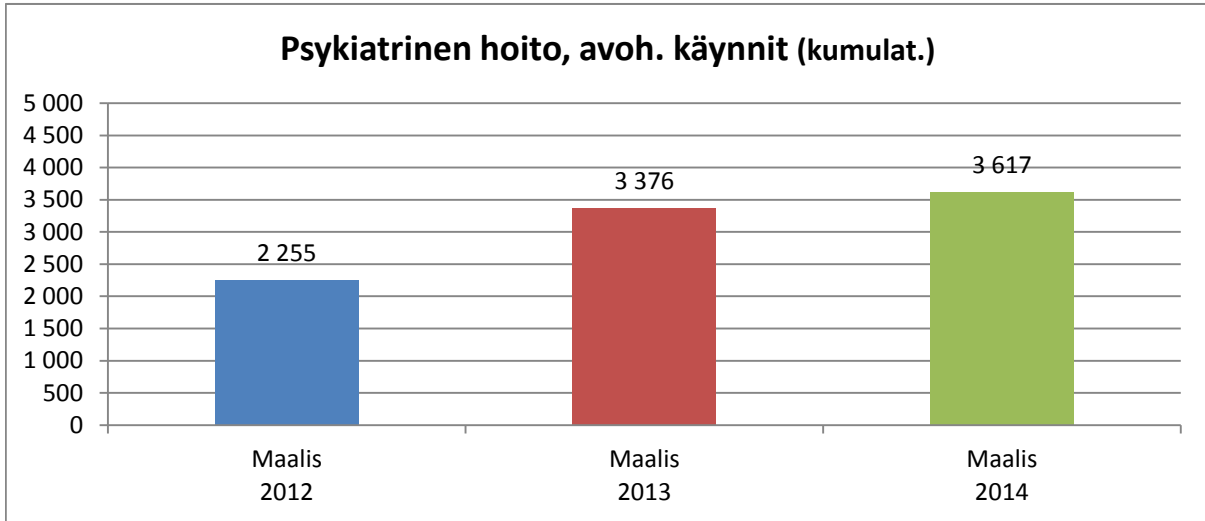


Oma toiminta: Sairaalahoito

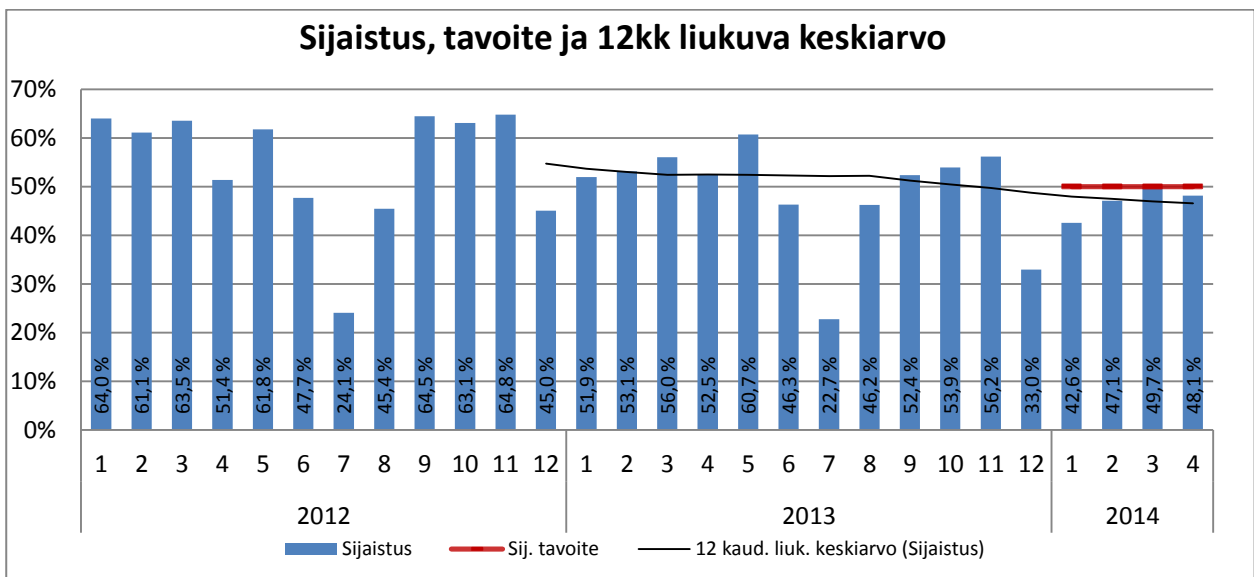
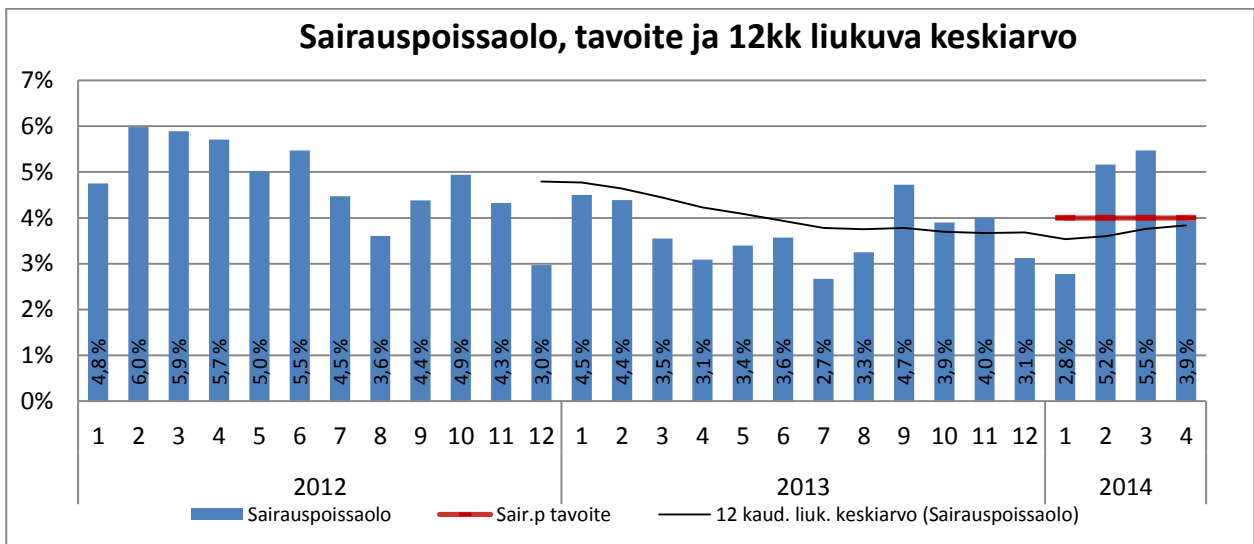
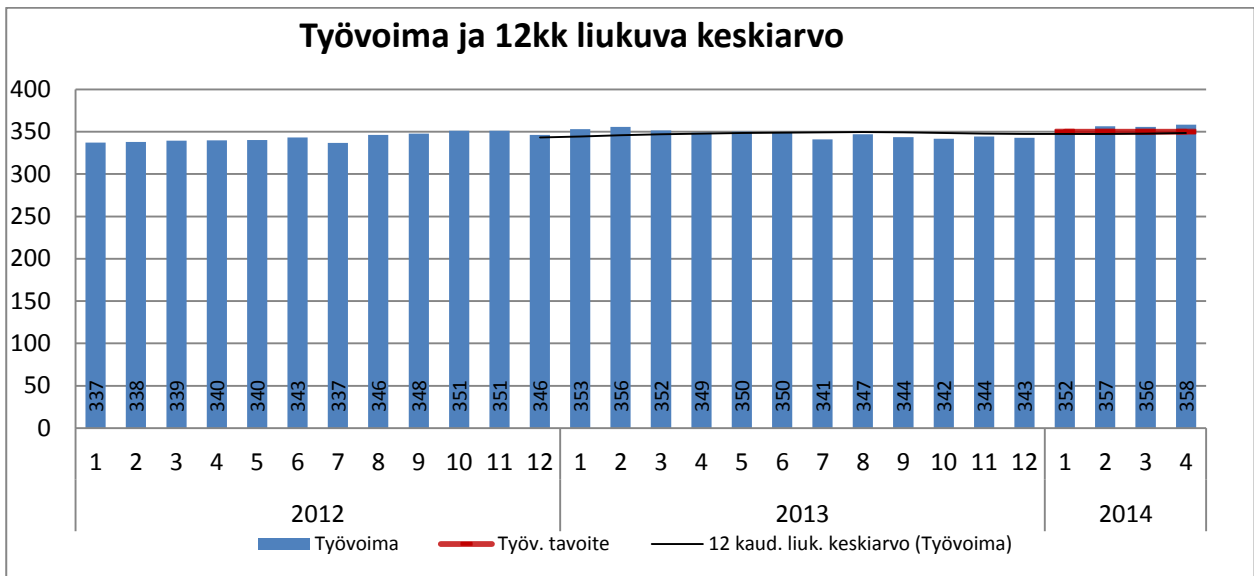


Sairaanhoitopiiri

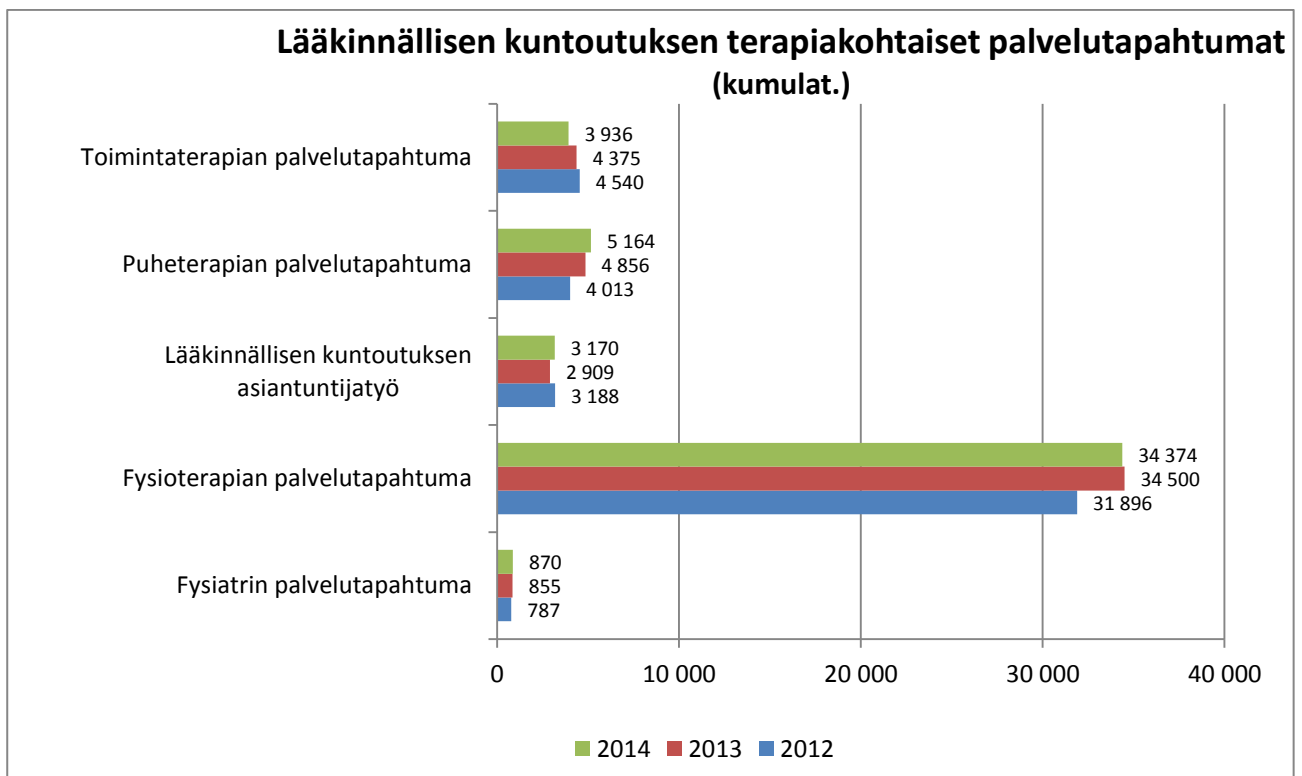
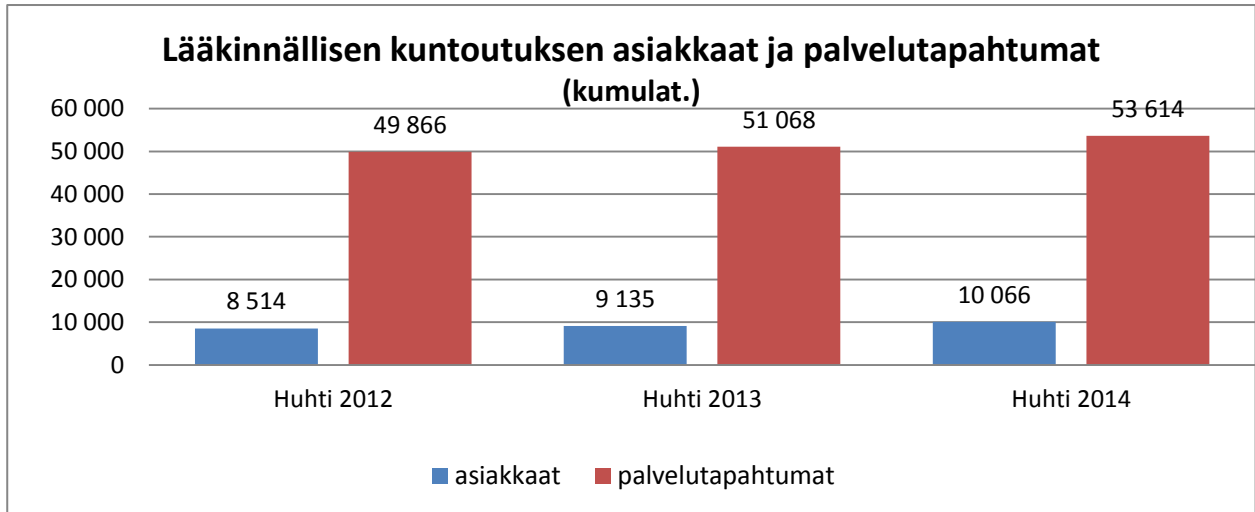




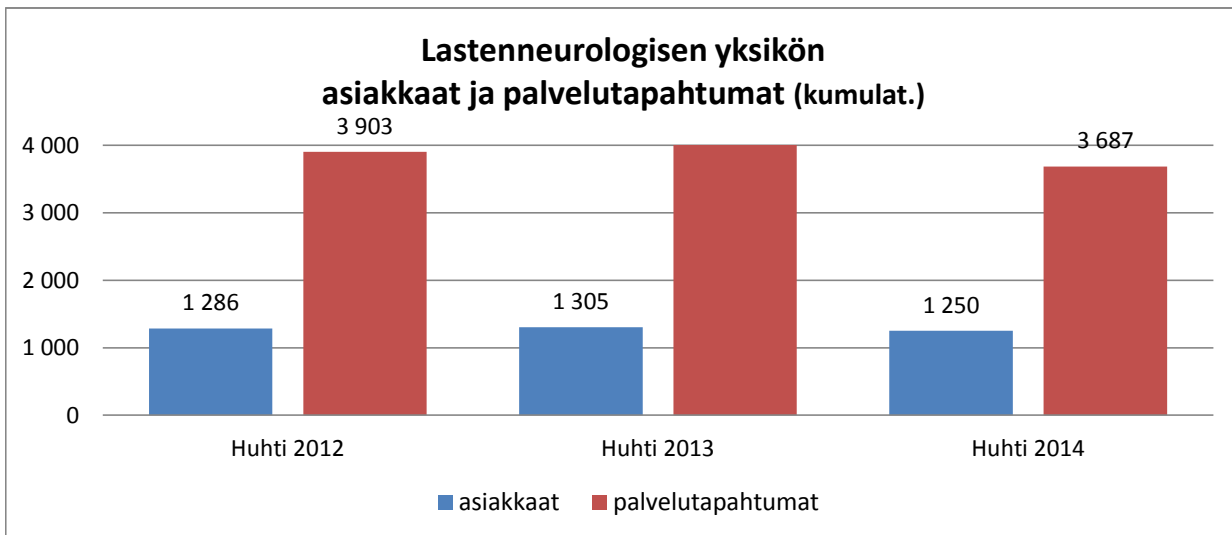
KUNTOUTUMISPALVELUT



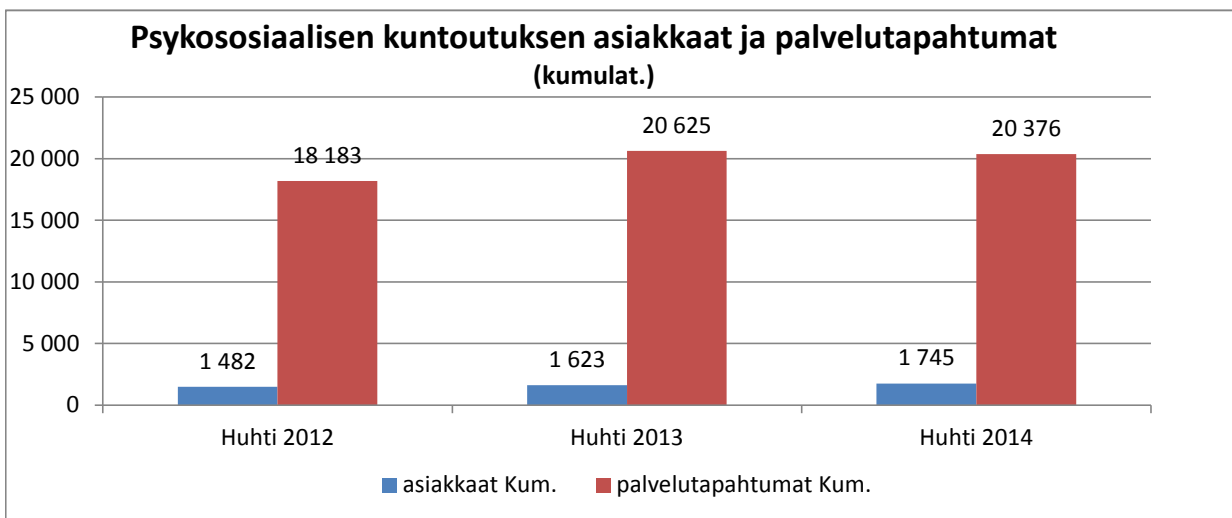
Lääkinnällinen kuntoutus



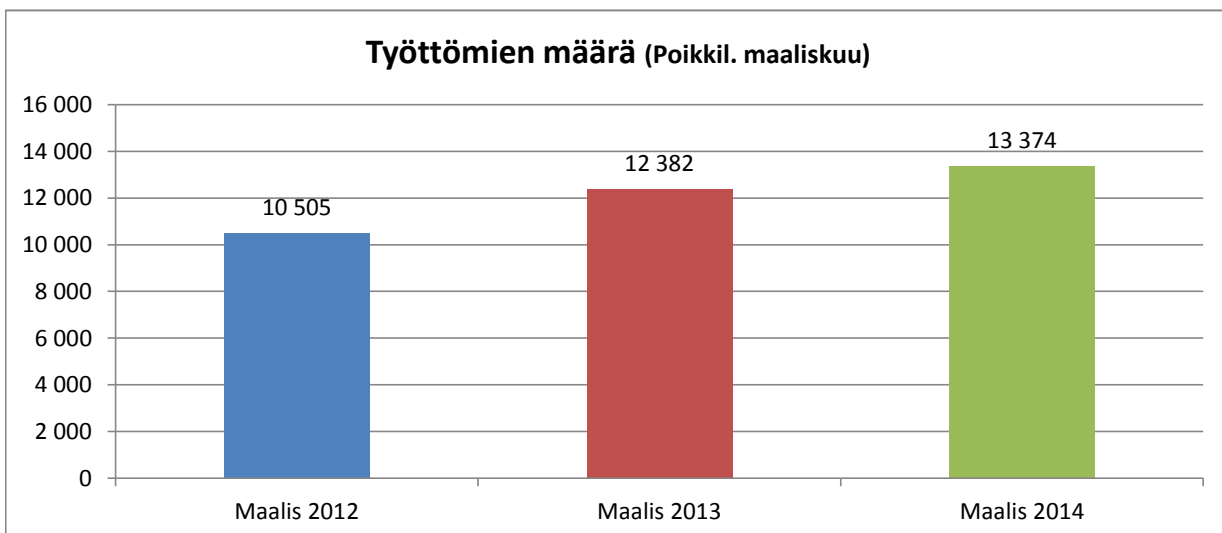
Lastenneurologinen yksikkö



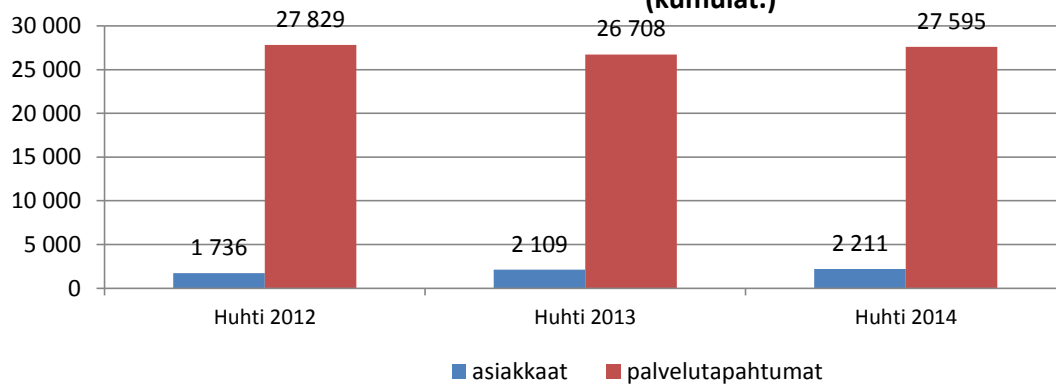
Psykososiaalinen kuntoutus



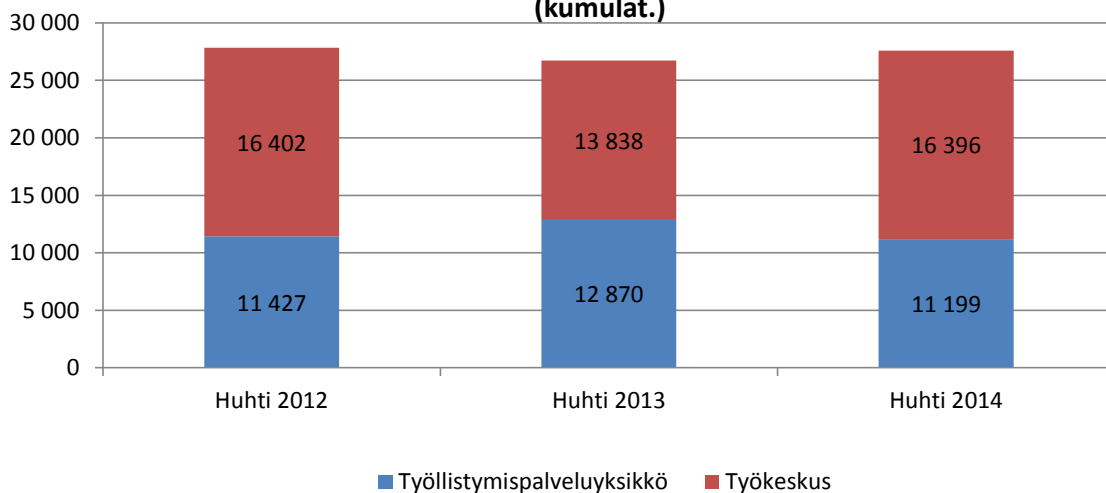
Työelämäkuntoutus



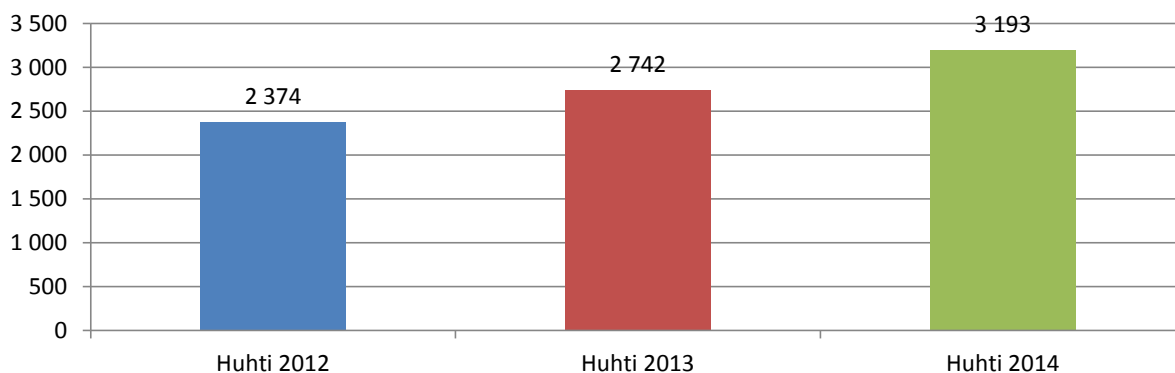
Työelämäkuntoutuksen asiakkaat (poikkil.) ja palvelutapahtumat (kumulat.)



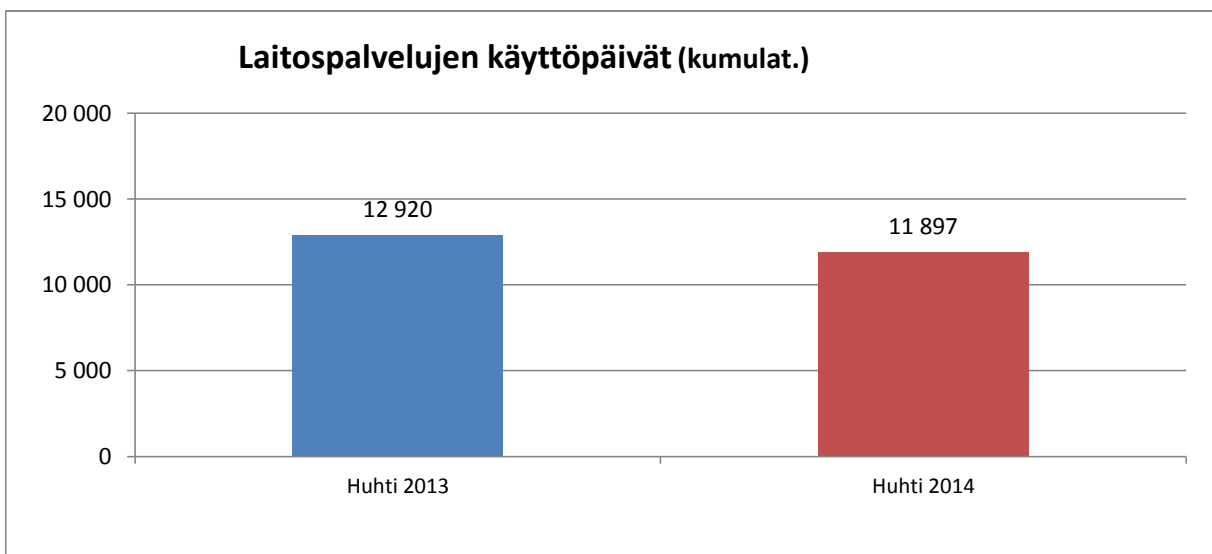
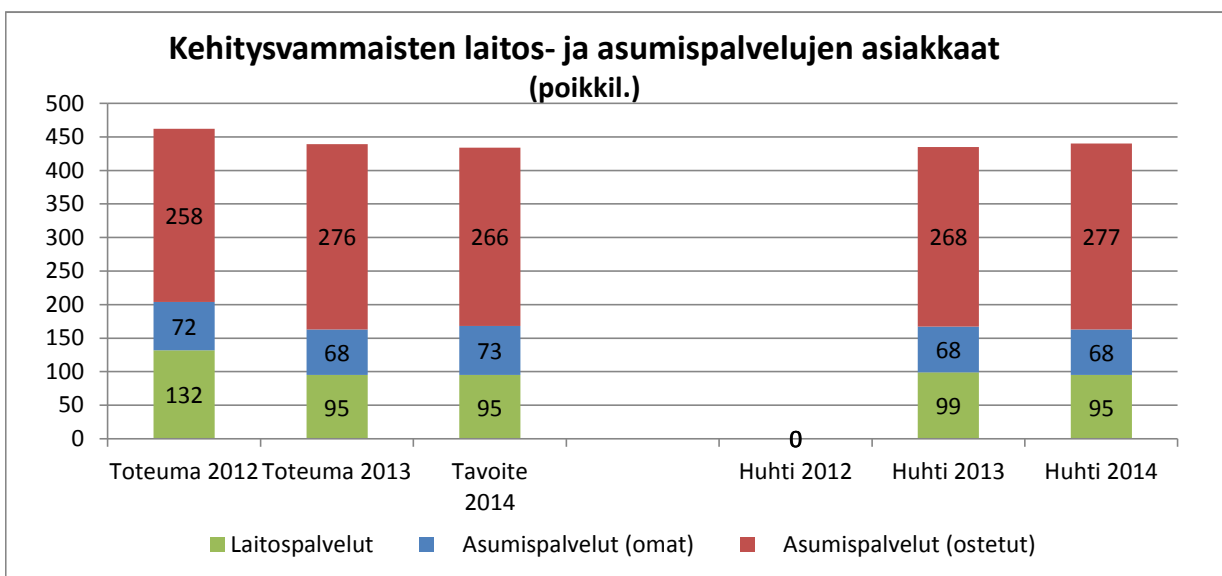
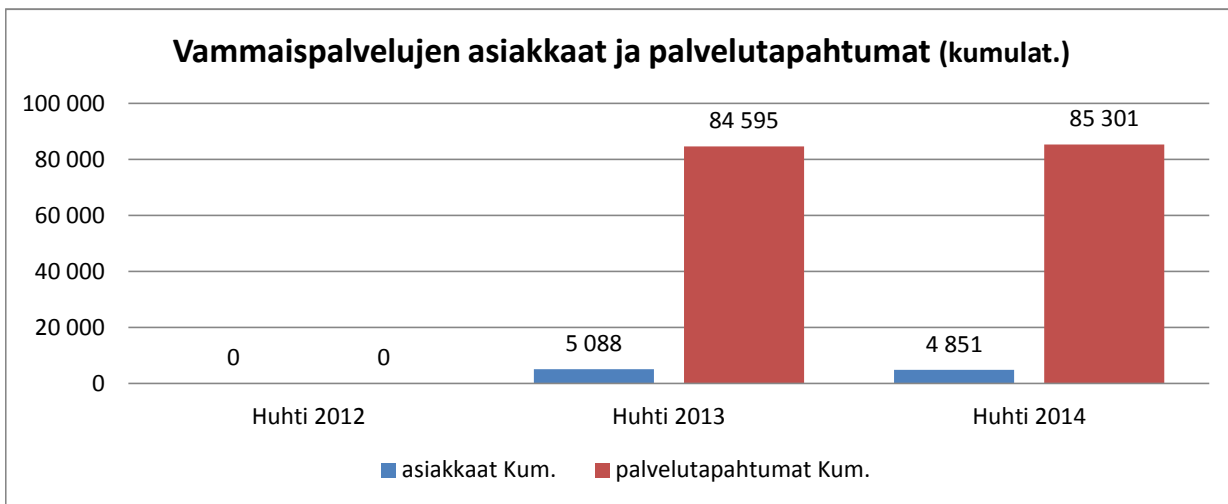
Työllistymispalveluyksikön ja työkeskuksen palvelutapahtumat (kumulat.)



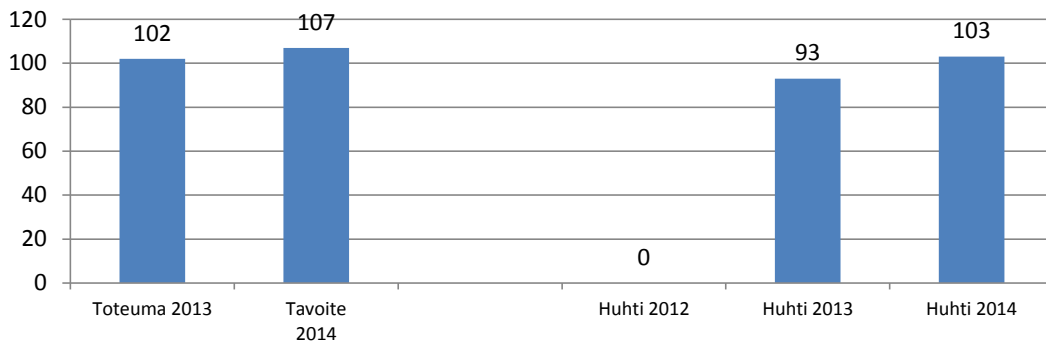
Työmarkkinatuella olevat henkilöt (poikkil.) Tavoite 2014: 2700



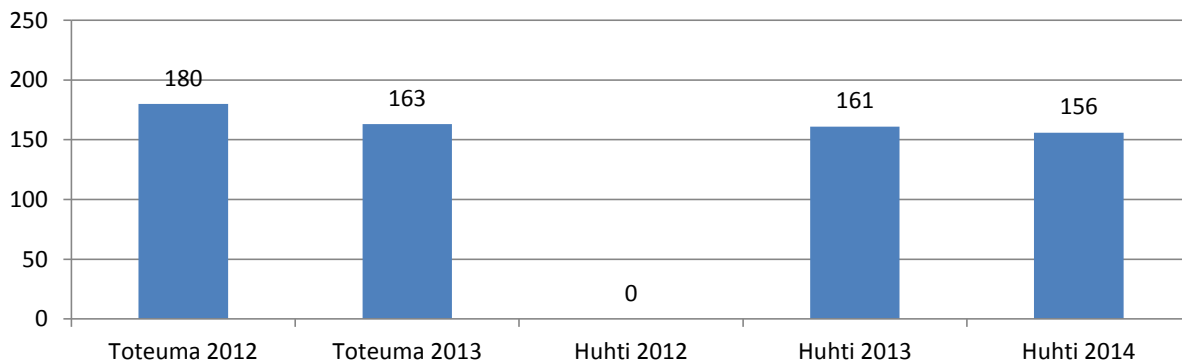
Vammaispalvelut



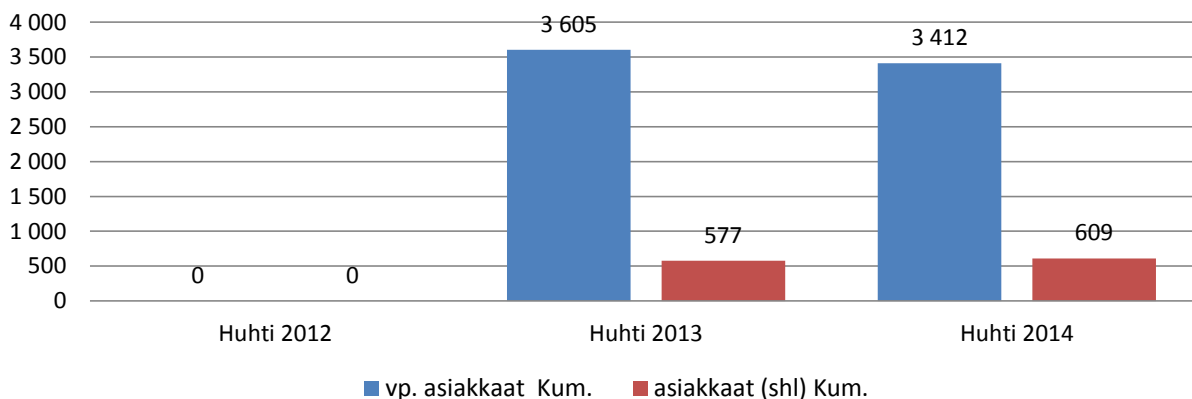
Vaikeavammaisten palveluasumisen asiakkaat (poikkil.)



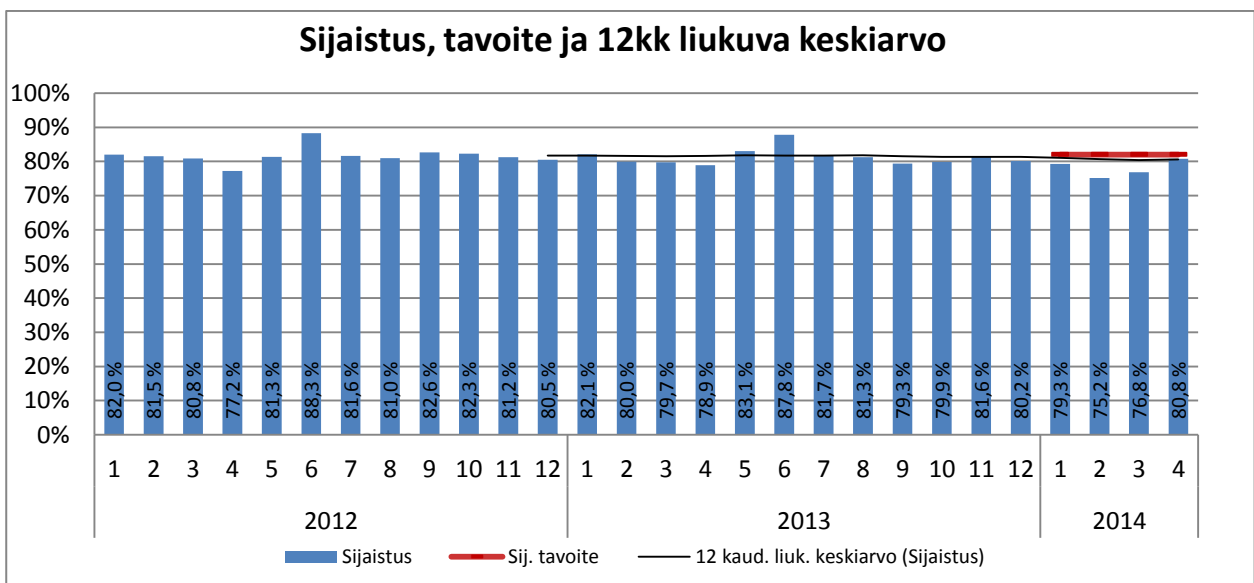
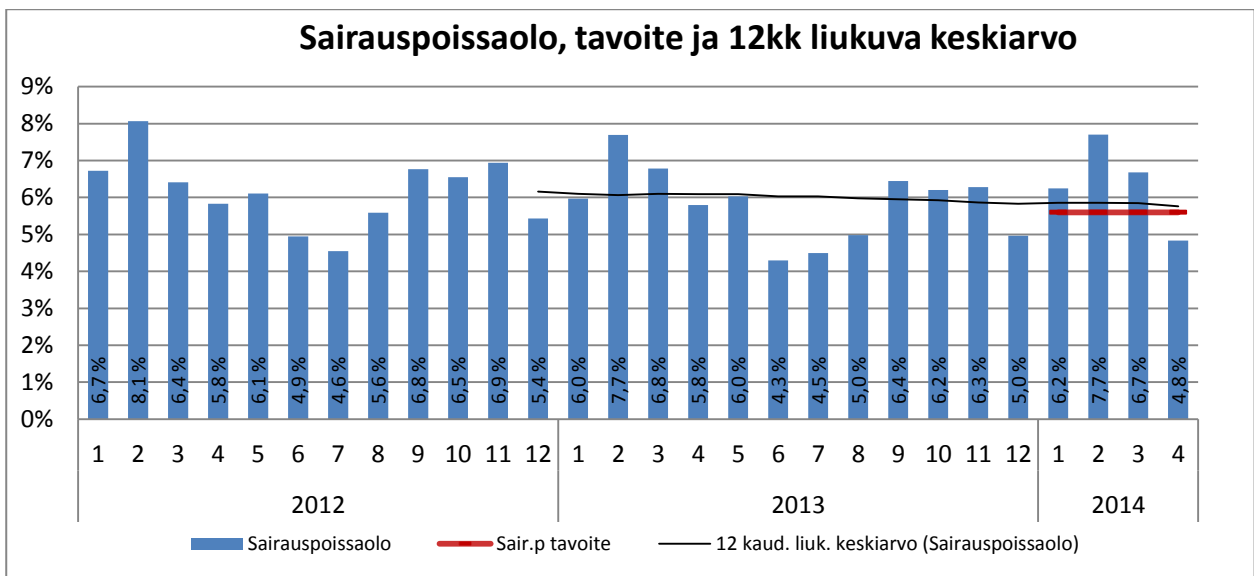
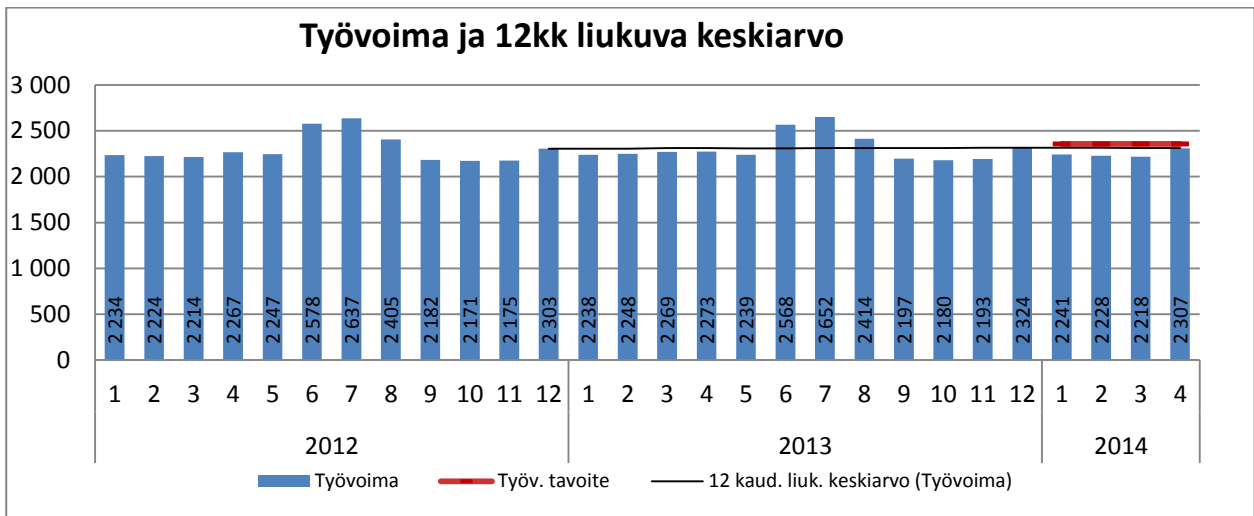
Vammaisten ja pitkäaikaissairaiden lasten omaishoidontuen asiakkaat (poikkil.)



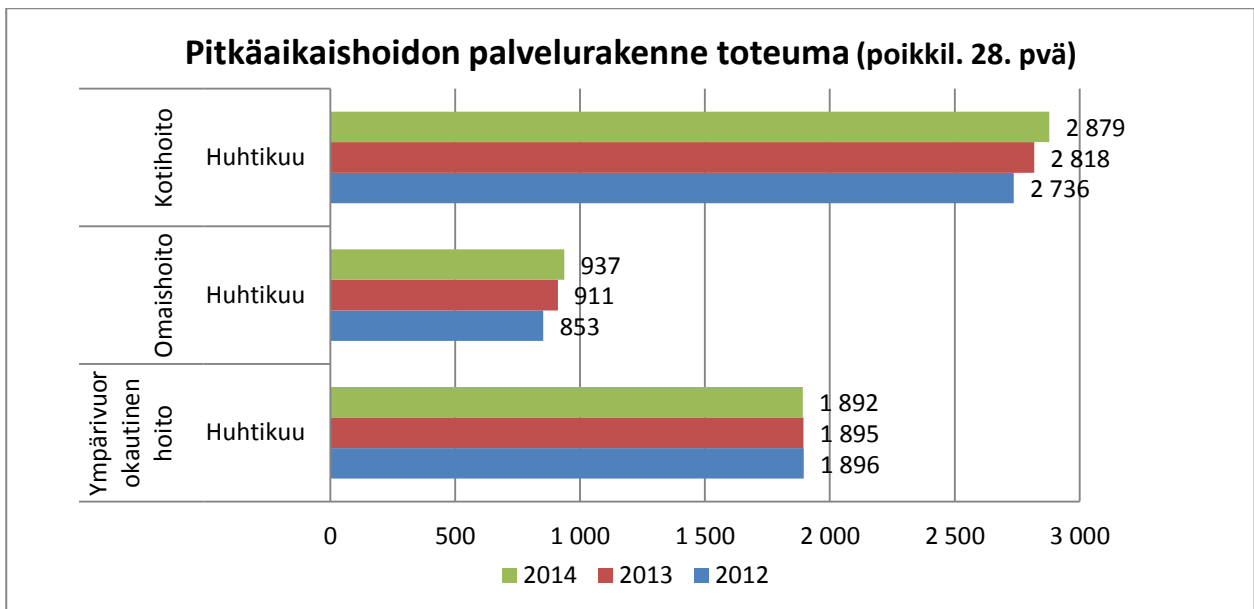
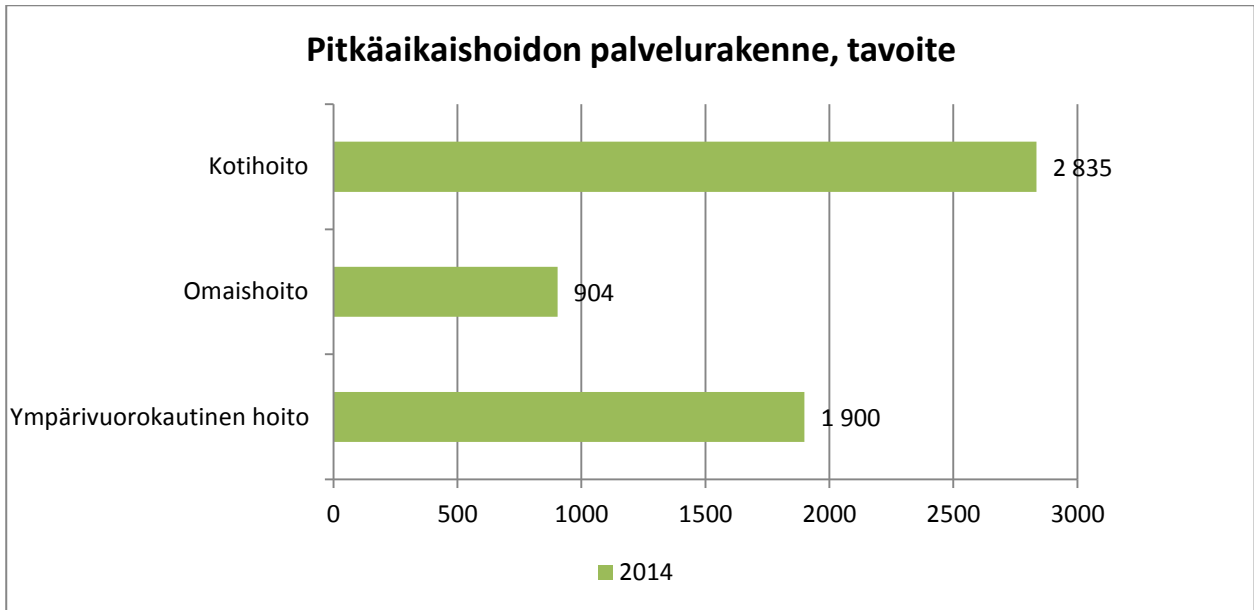
Kuljetuspalvelujen asiakkaat (kumulat.)



VANHUSPALVELUT

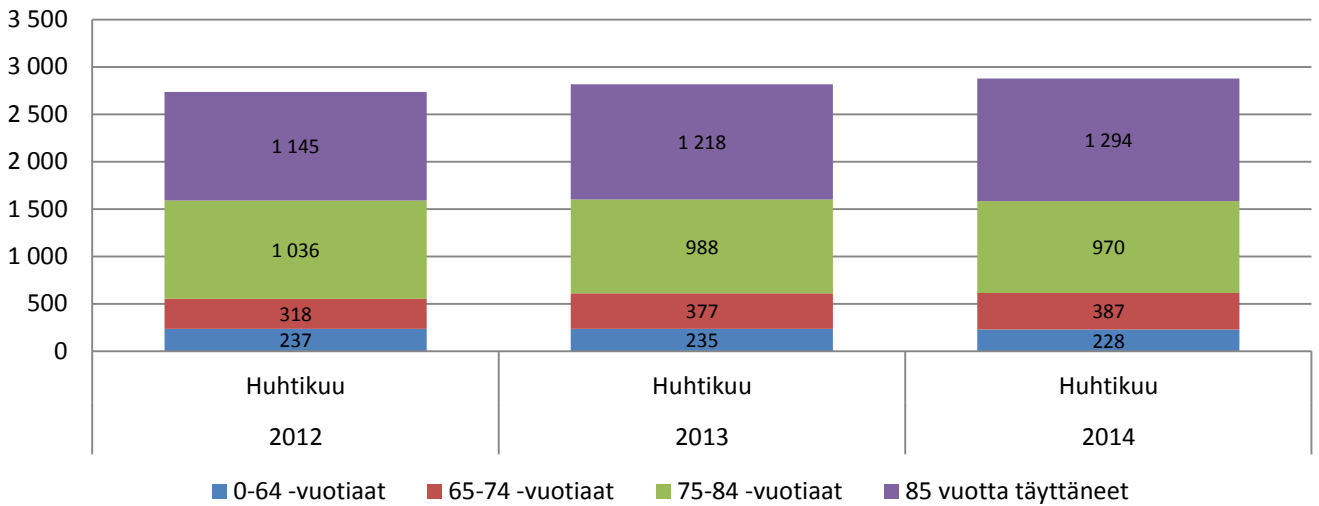


Toiminta

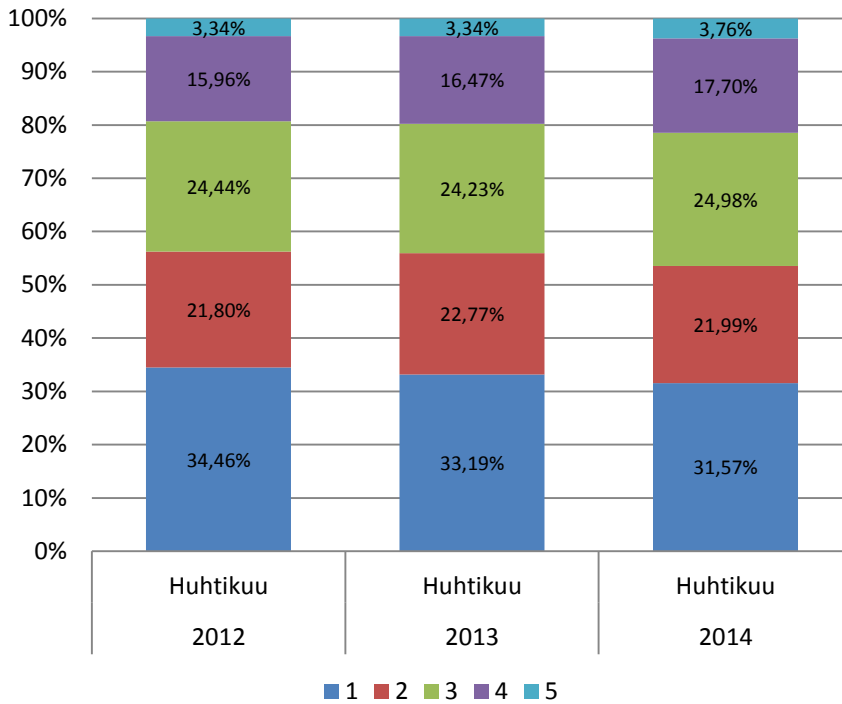


Kotihoito

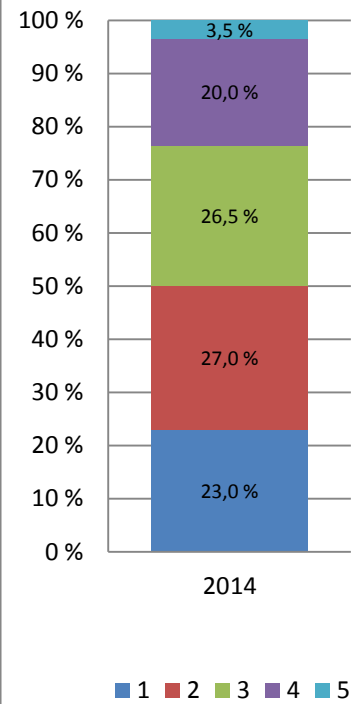
Säännöllisen kotihoidon asiakkaat ikäryhmittäin (poikkil. 28. pvä)



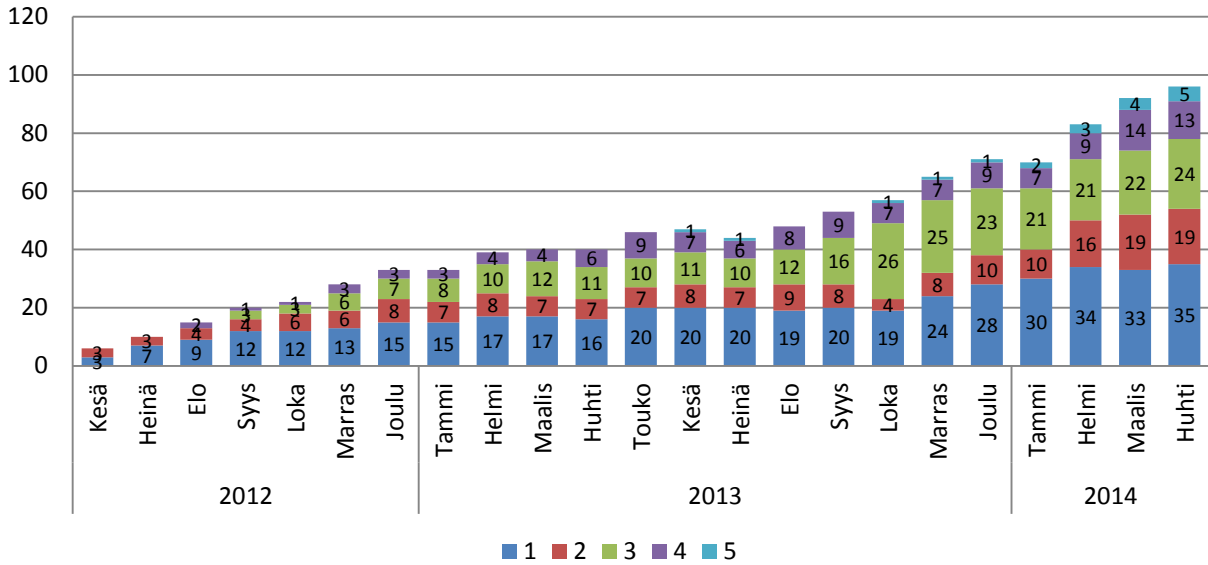
Säännöllisen kotihoidon asiakasjakaumat palveluluokittain (poikkil. 28. pvä)



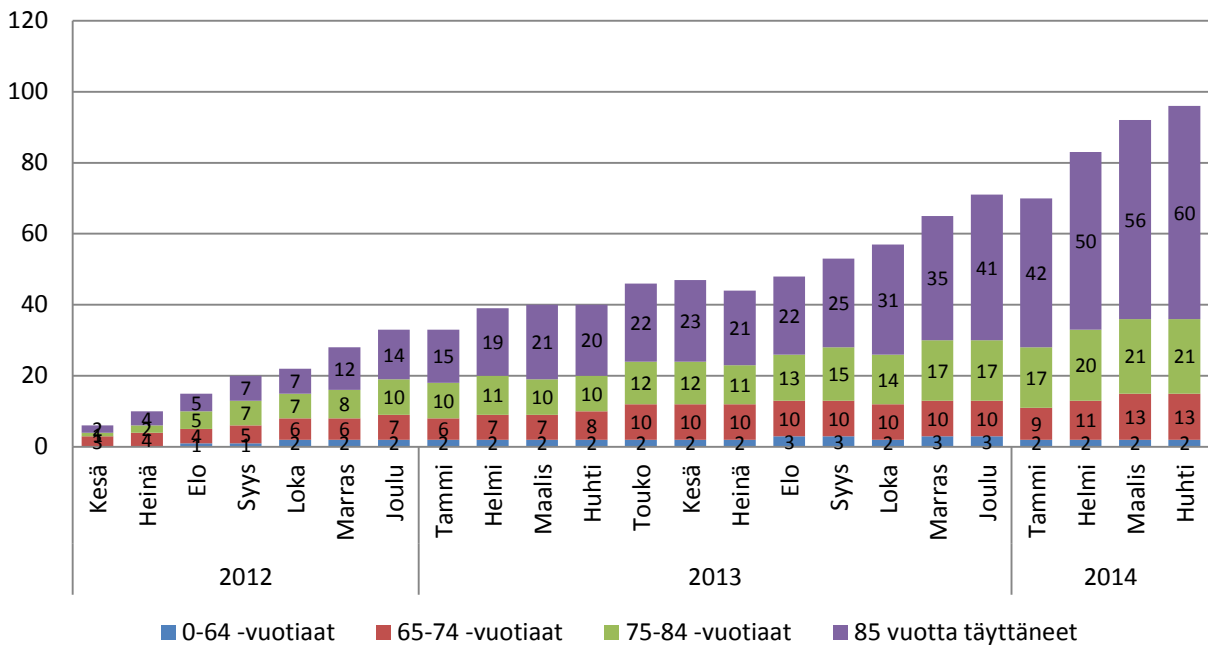
Tavoite



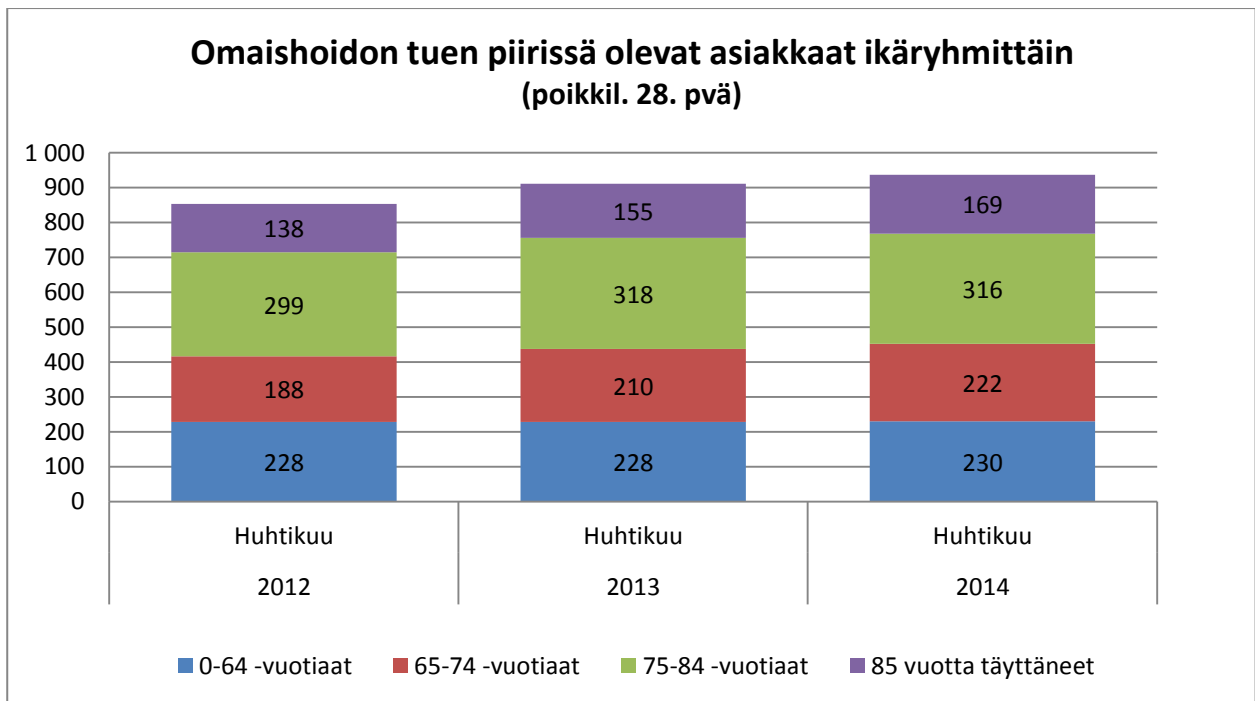
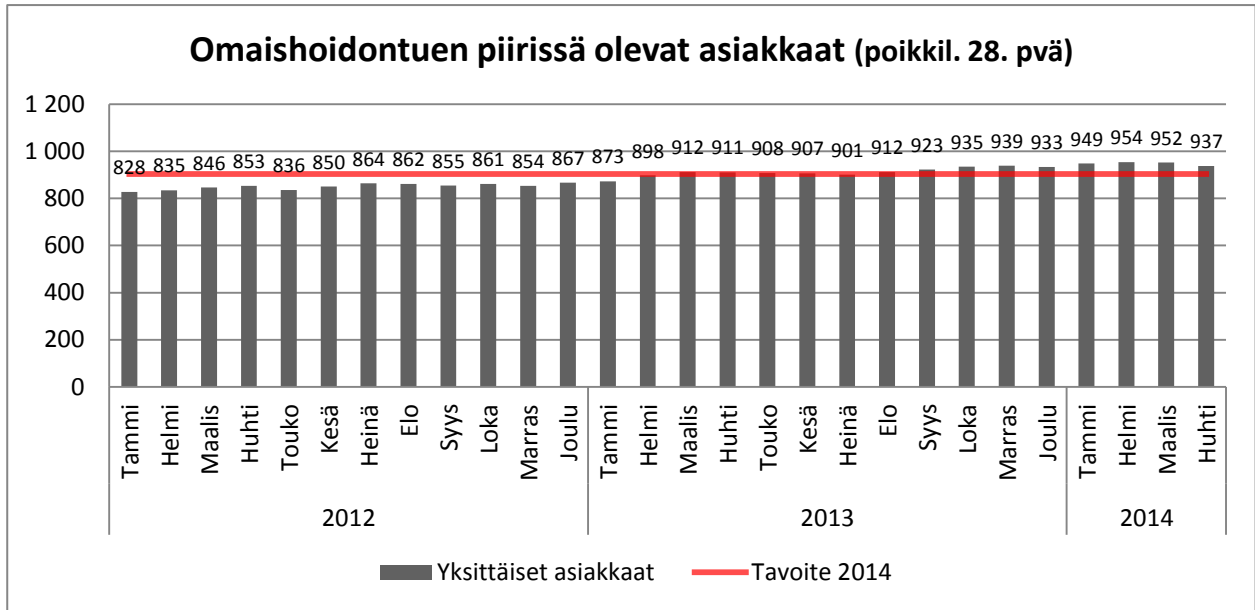
Palveluseteliasiakkaat palveluluokittain (poikkil. 28. pv)



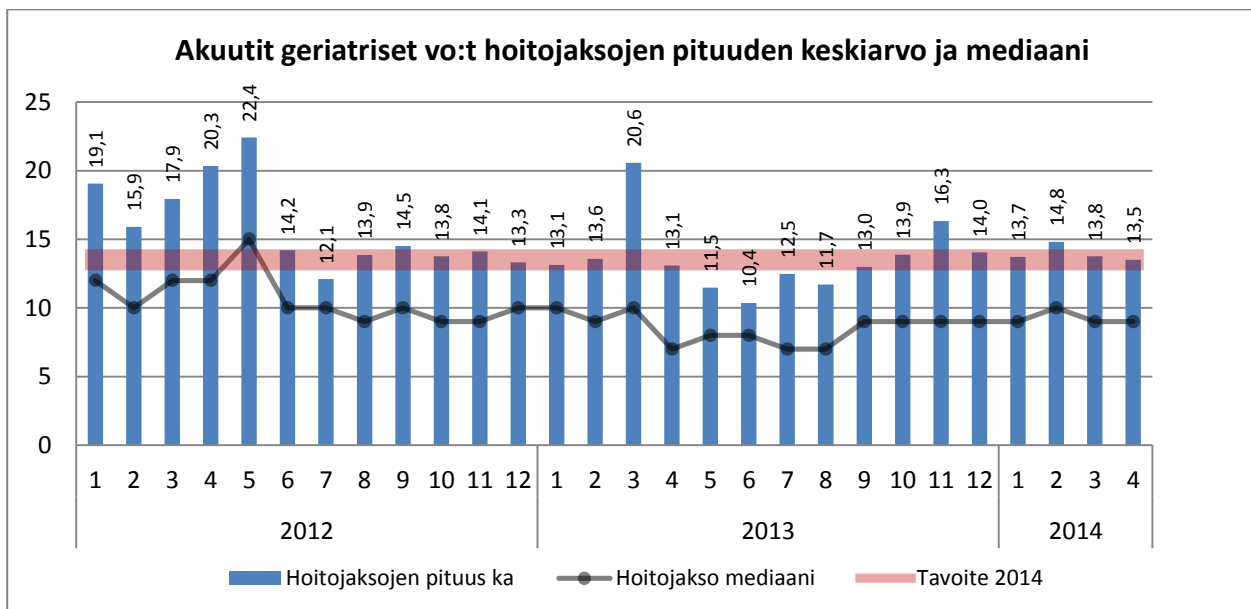
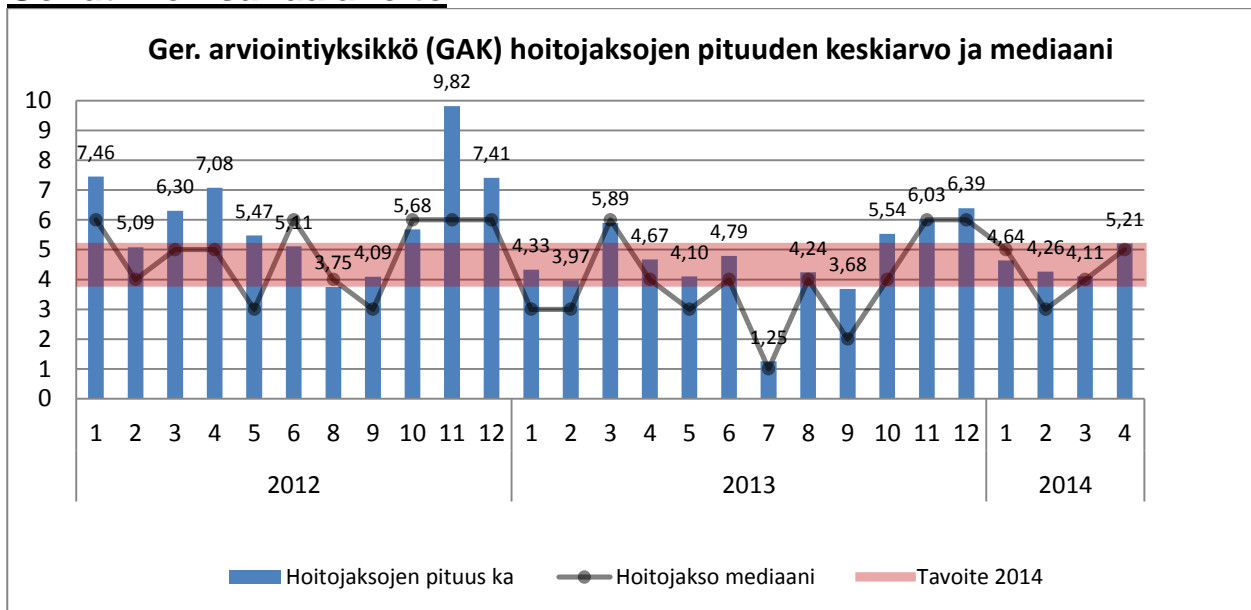
Palveluseteliasiakkaat ikäryhmittäin (poikkil. 28. pv)



Omaishoidon tuki

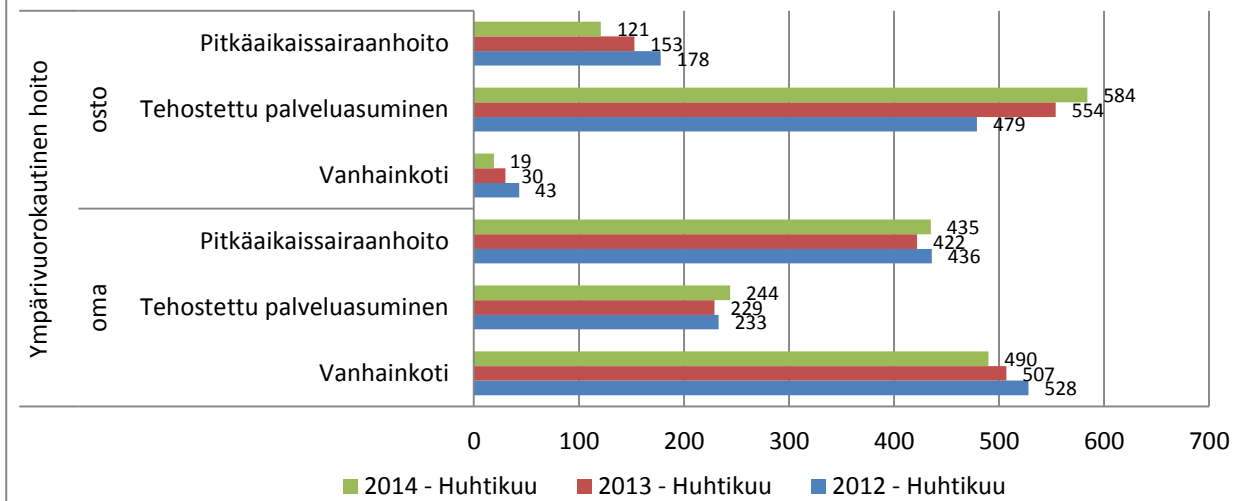


Geriatrinen sairaalahoito

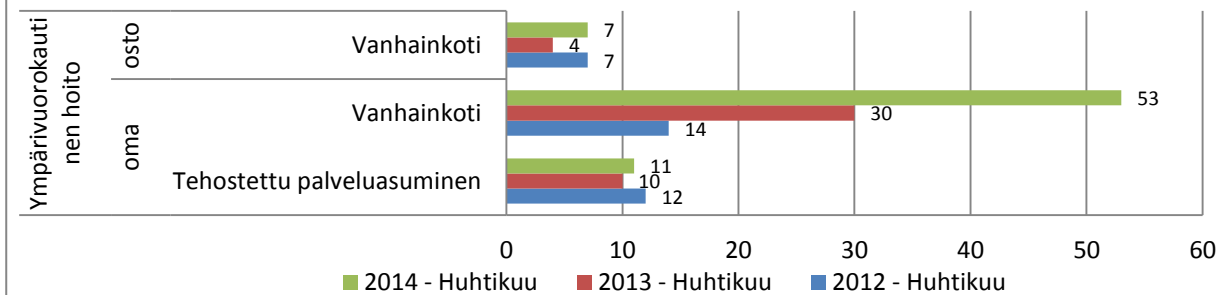


Ympäri vuorokautinen hoito

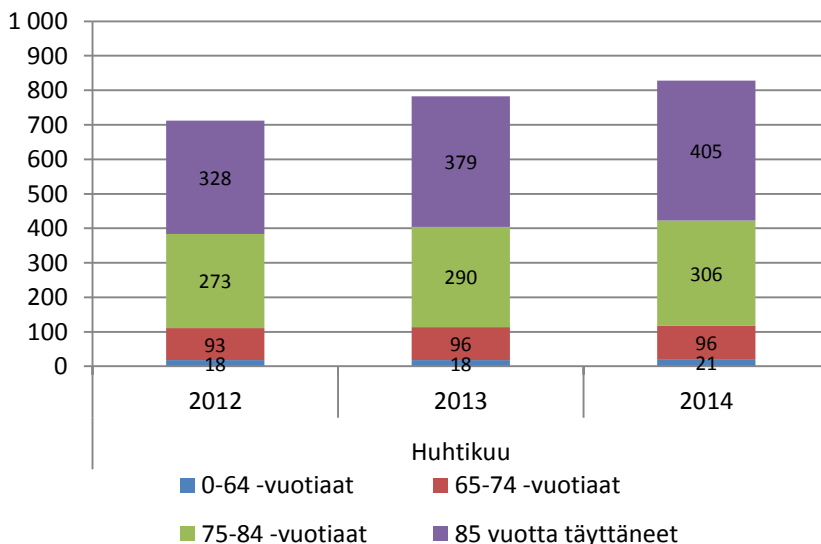
Ympäri vuorokautinen pitkäaikaishoito (poikkil. 28.pvä)



Ympäri vuorokautinen lyhytaikaishoito (poikkil. 28. pvä)



Tehostetun palveluasumisen asukkaat (poikkil. 28.pvä)



Tavoite: 843

